



Stormwater Update FY 2020 – 2021 (COVID Year)

September 27, 2021

Historic Data

Average rainfall August 2006	6.85"
Rainfall recorded August 1, 2006	2.84"
Average annual precipitation - (averaged over a 30 yr period; 1991-2020) (NWS / NOAA)	8.8"
Cumulative annual rainfall 2020 (NWS / NOAA)	5.84"
Max Daily Rain 2020 - CoCoRaHs	1.85"
Rainfall from July – September 2020 (NWS / NOAA)	2.11" Cumulative

Rainfall Data (CoCoRaHs)

Location / Date	Maximum Recorded Rainfall
Mission (03/04/20)	1.01"
East (07/25/20)	1.50"
Central (03/04/20)	1.02"
Northeast (03/04/20)	1.75"
West (03/04/20)	1.85"















FY 2020-2021 Stormwater

Operations Report

Stormwater Operations

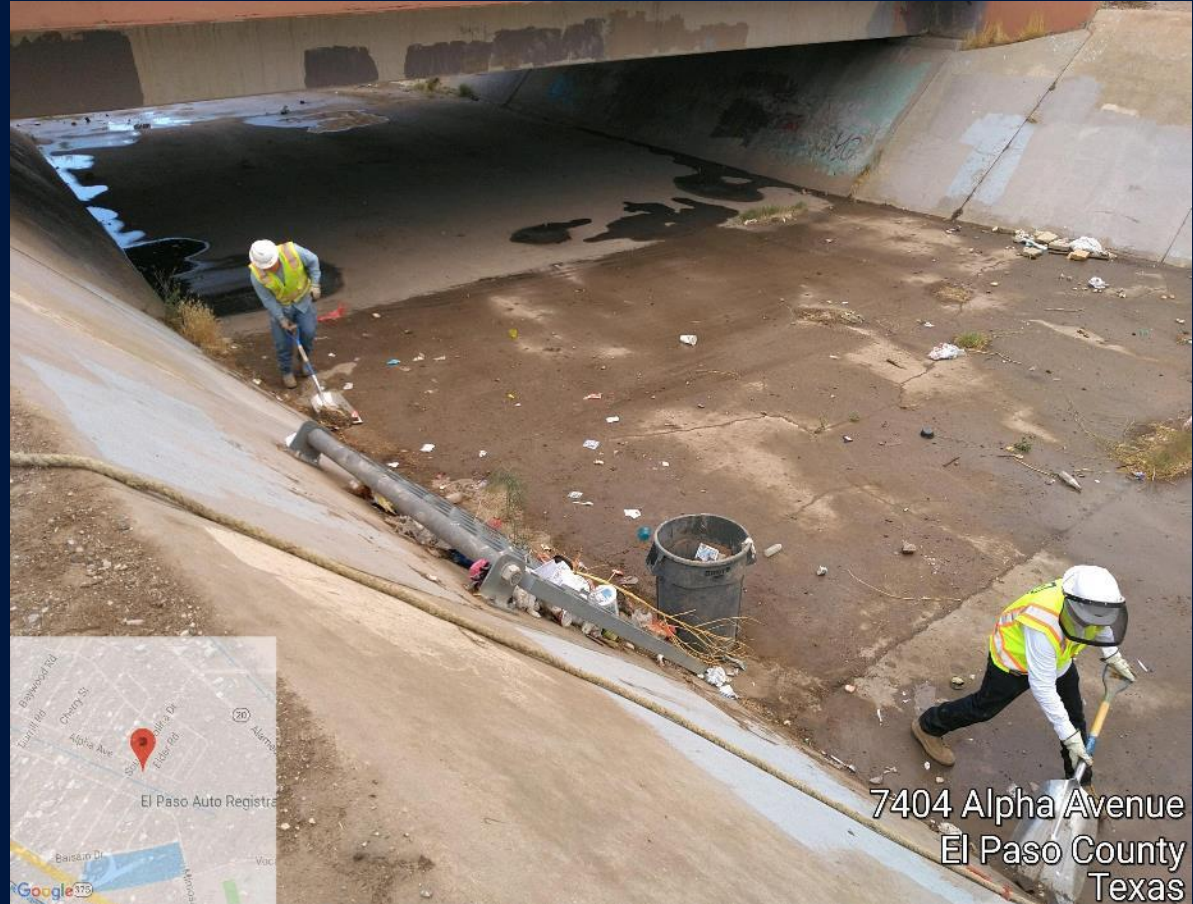
- USACE inspections
- Clearing of inlets
- Cleaning of drains and channels
- Cleaning of ponding areas
- Weed control
- Erosion control
- Service requests
- Vector units
- Sandbag distribution
- Mosquito control

Stormwater Operations

	 Ponds	433.82 acres maintained
	 Channels & Levees	44.38 miles cleaned
	 Agricultural Dams	3.27 miles maintained
	 Storm Drains	2.05 miles of conduits cleaned
	 Inlets	206 inlets cleaned
	 Dams	427.84 acres maintained

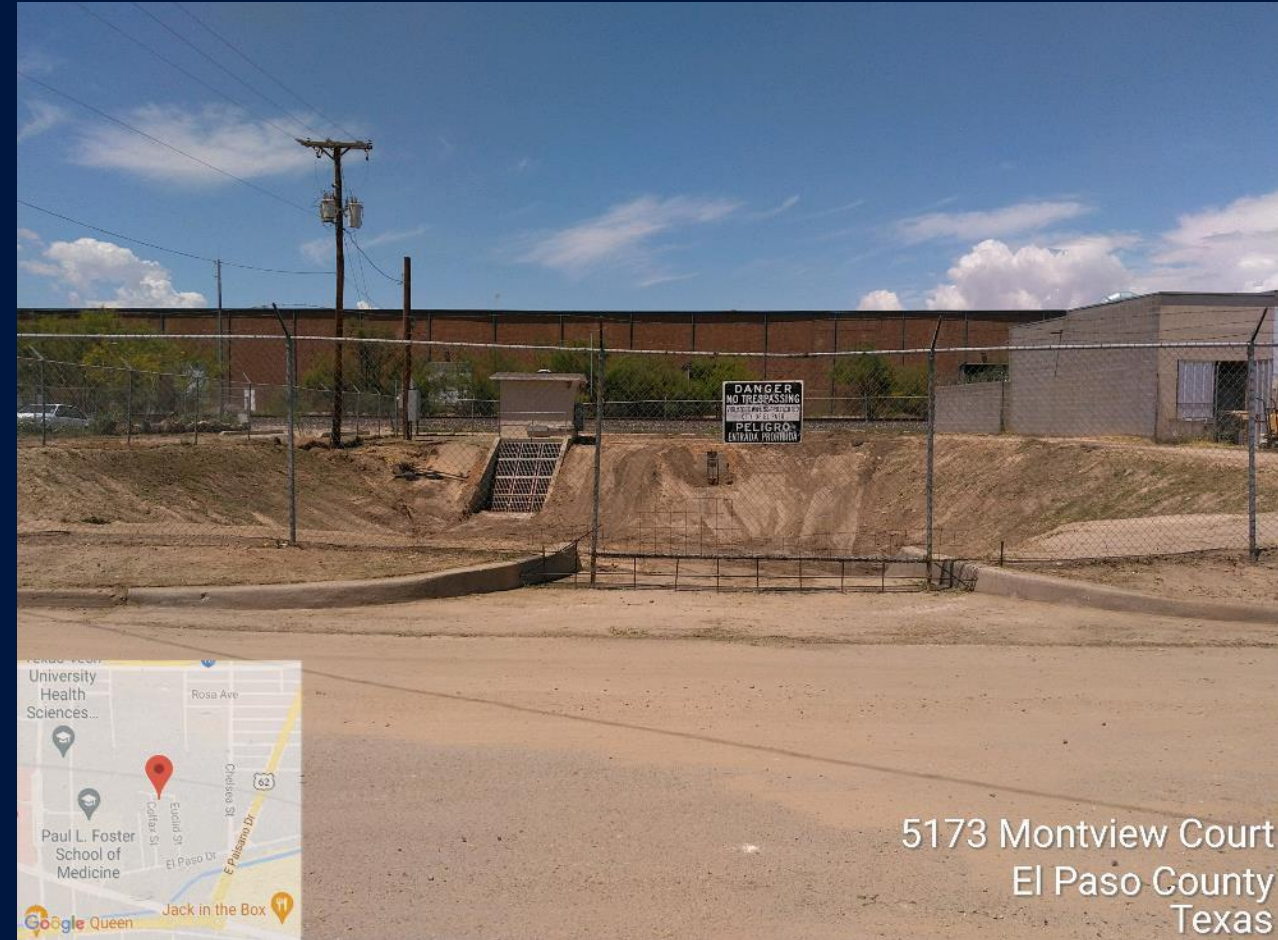
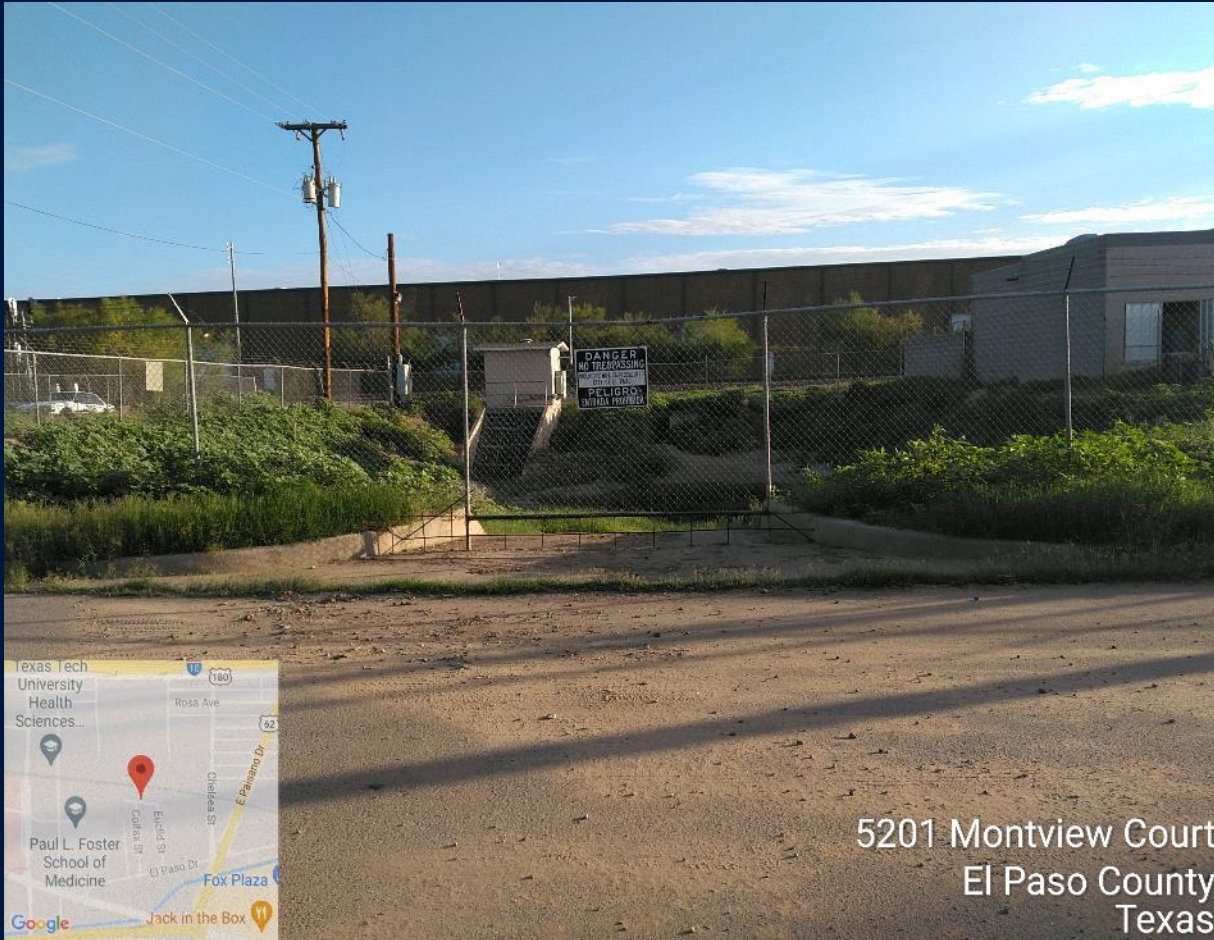
Stormwater Operations

Channel Cleaning



Stormwater Operations

Pond Cleaning



Stormwater Operations

Vactor Cleaning





FY 2020-2021 Stormwater

Accomplishments

Certified 14-miles of Levee

Benefit to 15,000 properties



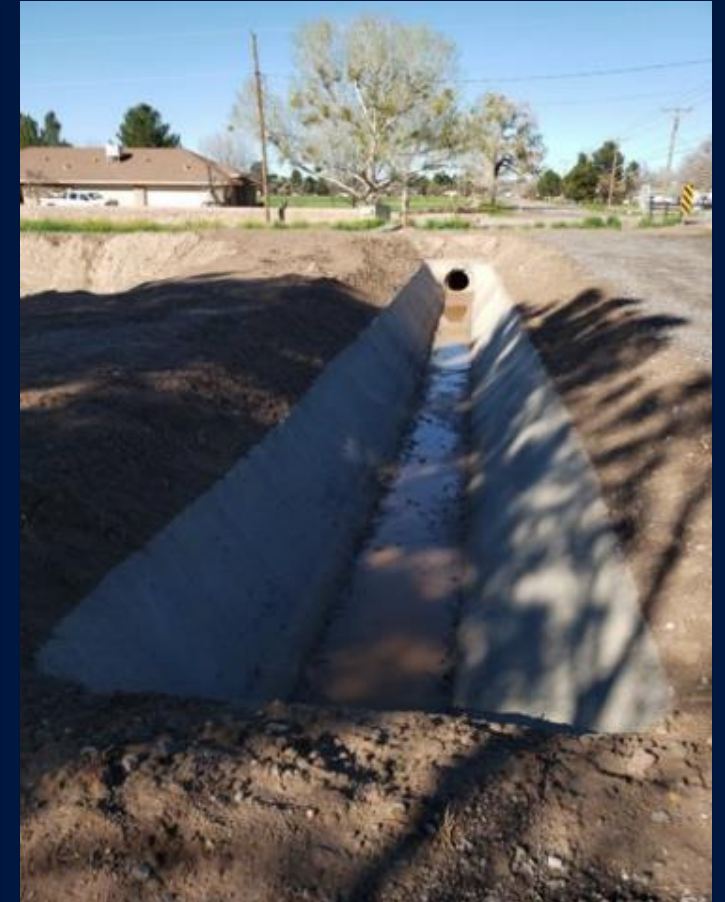
El Paso County Water Improvement District #1

Borderland Drain above Gomez Street

Before



After



El Paso County Water Improvement District #1

Montoya Drain between Redd Road and Mulberry





FY 2020-2021 Stormwater

Projects Completed

Projects Completed

Project	Construction Cost
Scenic Drive and Lebanon Ave. Pipe Rehabilitation	\$111K
Thomas Manor Park Pond and Pump Station Improvements	\$6M

Scenic and Lebanon Pipe Rehabilitation



Thomas Manor Park-Pond, Pump Station and Drainage Improvements

Thomas Manor Park Pond Improvements



Thomas Manor Park Pond Improvements



Successful collaboration with YISD and CoEP Parks and Recreation Department



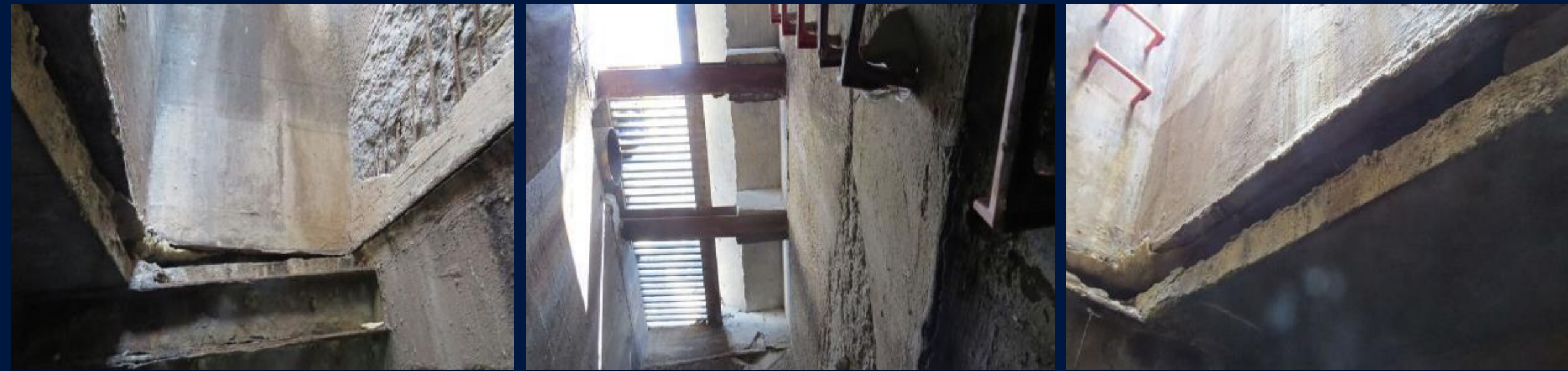
Stormwater

Projects Under Construction

Project Under Construction

Project	Construction Cost
Doniphan and Frontera Junction Box Rehabilitation	\$3.8M
San Lorenzo Avenue CMP Replacement and Wastewater Improvements	\$992K
Flow Path 20 at Mesa Park Channel Stabilization	\$738K
Sam Snead Storm Drain Improvements	\$6.3M
White Spur Crossing Improvements / Riverbend Phase 3	\$226K

Doniphan and Frontera Junction Box



Doniphan and Frontera Junction Box



Now complete

San Lorenzo Pipe Replacement and Wastewater Improvements



Now complete

Flow Path 20 at Mesa Park



Sam Snead Drive



White Spur Crossing Improvements



Built by City with funds provided by EPWater.

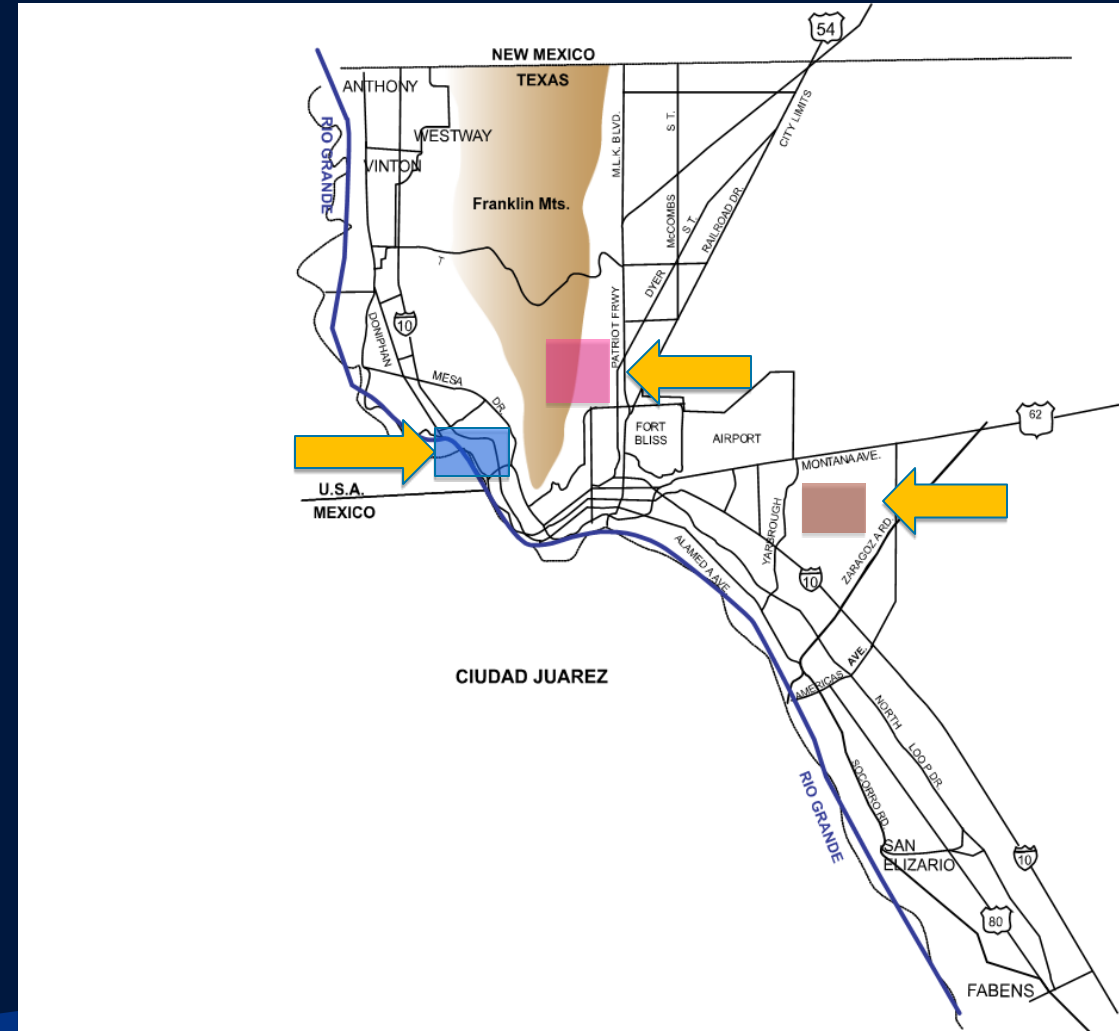


Upcoming Projects (Construction)

Upcoming Construction Projects

Central, Northeast, Central and Mission Valley

- Central - Stevens Alley
- Northeast – Old Spanish Trail
- Central – Coors Channel
- West Central – Mesa and Brentwood
- Mission Valley – San Lorenzo
- Mission Valley – Playa Drain at Yarbrough (with City)



Upcoming Projects (Construction)

Stevens Alley Conduit Installation



Old Spanish Trail Spillway Structural Repairs



Coors Channel Improvements



Redesign in process

Mesa and Brentwood Drainage Improvements



San Lorenzo Drainage Improvements



San Lorenzo Drainage Improvements



Projects Under Construction

Playa Drain Crossing at Yarbrough Drive





Upcoming Projects (Design)

Upcoming Projects (Design)

- Corrugated Metal Pipe (CMP) Replacement Program – Various
- Bywood / Eads Drive Drainage Improvements
- Fort Bliss Diversion Access Boxes
- Montview Pump Station and Basin Improvements



Open Space Acquisitions

Open Space Financial Report through February 28, 2021

Open Space Funding Inception through 02/28/2021	\$24,697,262
(less) Total Open Space Expenses from Inception	(\$20,360,940)
Available Balance for Open Space Projects as of 02/28/2021	\$ 4,336,322

Open Space Acquisitions through February 28, 2021

- Palisades
- Wildwood Arroyo
- Avispa Canyon – Conservation Easement
- Asarco (Spring Crest)
- Upper Coronado (Cloudview)
- Silver Springs
- Playa Drain
- Lower Coronado Canyon
- Hunt Arroyo 1
- Knapp
- Palisades Entrance
- Canterbury Arroyo
- Lost Dog

Pending Open Space Acquisitions

- Hunt Arroyo 1A
- Cement Lake
- Avispa Canyon
- Canterbury
- Northeast Land West of Martin Luther King, Jr. Blvd.

Stormwater Rates

- No increase FY 20-21
- Financial Implications
 - Impact fee for water and wastewater only – does not apply to stormwater needs

In Progress

- DDM – working with City, Planning & Permits Department on making clarifications
- Supporting City Floodplain Administrator and working with FEMA and on updating the Special Flood Hazard Area (SFHA)
 - Held 3 virtual meetings to notify public of upcoming changes to the SFHA
 - Performing review of FEMA's SFHA for appeal of maps
- Assisting County of El Paso on updates to interior drainage
- Pilot testing of 3 rain gauges with SCADA capabilities
- Working with U.S. Army Corps of Engineers on jurisdictional determinations of Water of the U.S.
- Perform 300+ subdivision review submittals
- Will Ruth Project to remove properties from special flood hazard area (SFHA)



Stormwater Update FY 2020-2021

Questions / Comments