

# The Children's Museum (Underground Electrical and Transformer Pad Easement

FRANKLIN EASEMENT AGENDA ITEM NO.9



## PROJECT DETAILS:



This is a 2012 Quality of life signature Project

## SCOPE OF WORK

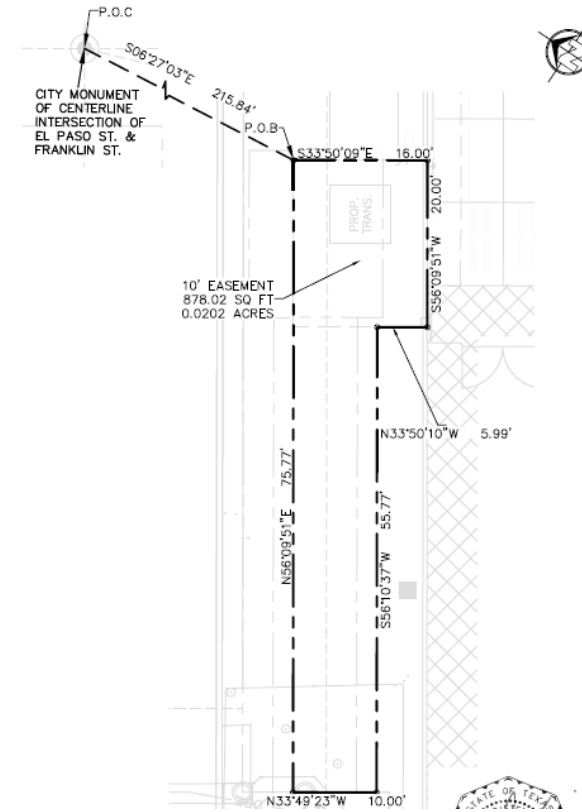
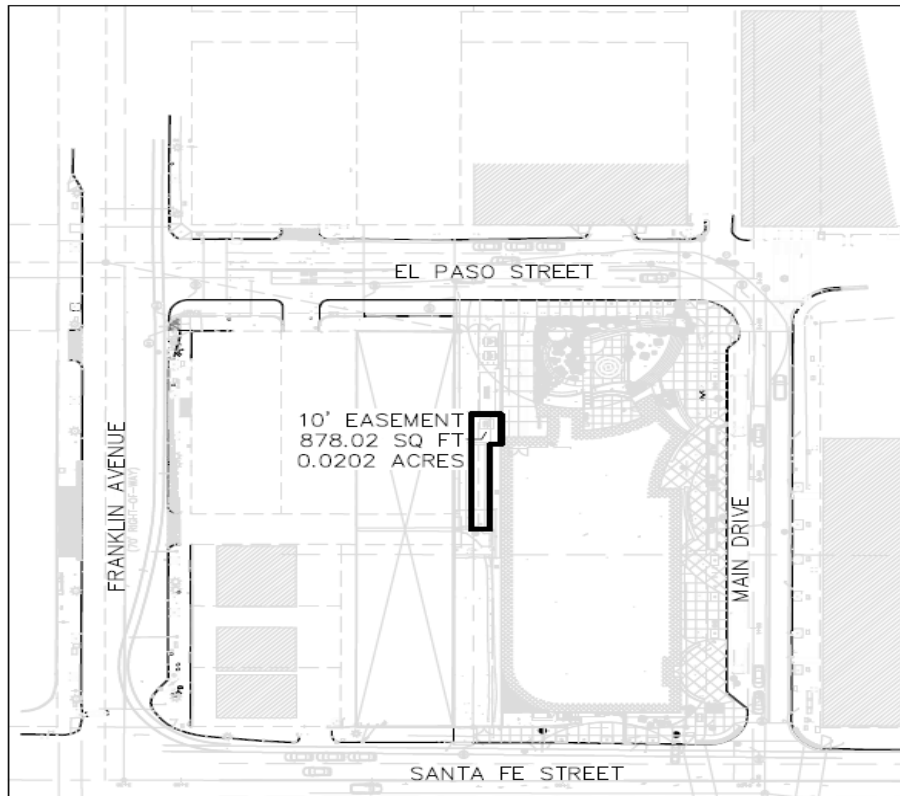
- A new 70,000 SF Children's Museum that will combine interactive and learning spaces for children.
- Location: 200 W Main Street
- A 4 level -50 foot climber
- Exhibits
- Outdoor public amenities and landscaping areas, such as gardens, gathering areas.



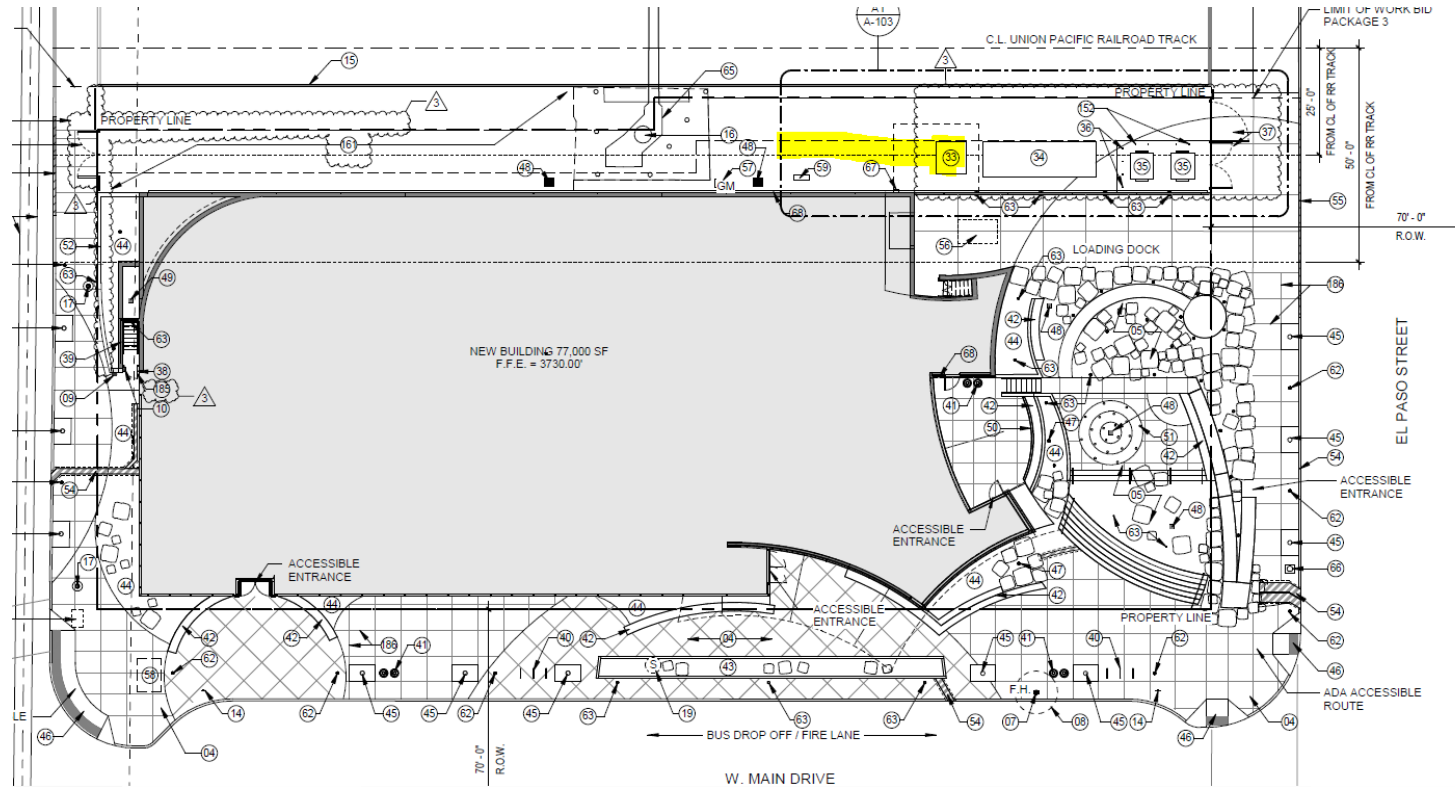
# EASEMENT SUMMARY

- **Recommendation**
  - **Authorization to sign an underground Electrical and transformer pad Easement that will grant El Paso Electric Company to enter, relocate, construct and maintain an underground electric system consisting of a transformer commencing at the City monument lying on the monument line being 10 feet North and 10 feet East offset of the respective centerlines of El Paso Street as describe on Exhibit A and Metes and bounds survey.**

# EASEMENT LOCATION



# PROPOSED TRANSFORMER LOCATION





# THANK YOU



## Mission

Deliver exceptional services to support a high quality of life and place for our community



## Vision

Develop a vibrant regional economy, safe and beautiful neighborhoods and exceptional recreational, cultural and educational opportunities powered by a high performing government



## Values

Integrity, Respect, Excellence, Accountability, People