



PARKS & RECREATION  
CITY OF EL PASO

# Preliminary Assessment for Outdoor Dedicated Pickleball Courts Potential Sites

This text box is to remind you about the ASL translator service. Do NOT add any info in this space.

REMOVE THIS BOX ONCE THE PRESENTATION IS FINALIZED.



# Council Discussion & Action (July 2, 2024)

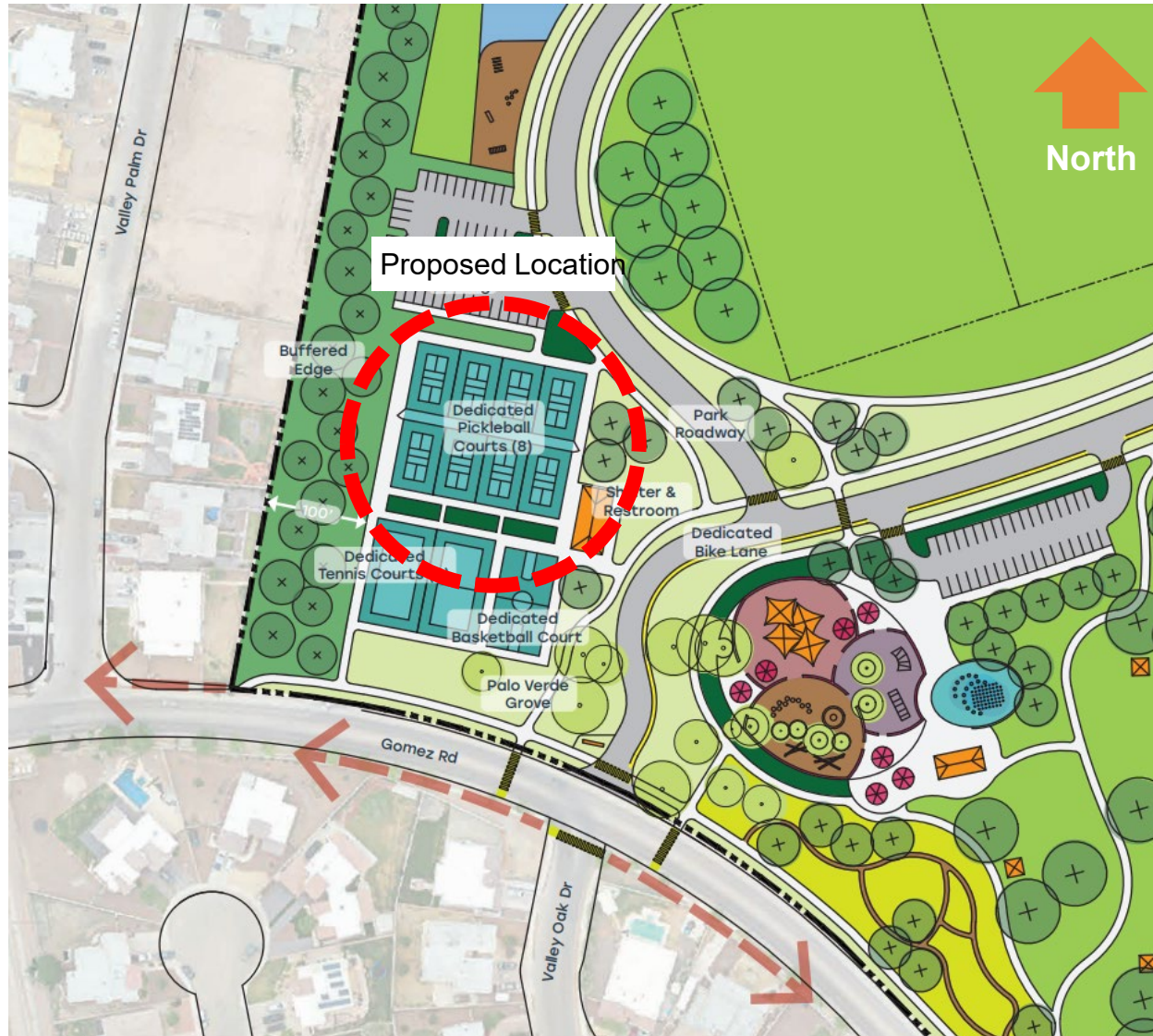
This text box is to remind you about the ASL translator service. Do NOT add any info in this space.

REMOVE THIS BOX ONCE THE PRESENTATION IS FINALIZED.

DIRECT the City Manager to conduct a thorough assessment of the implementation of **dedicated pickleball courts** at locations across the City of El Paso, considering both interior and exterior pickleball courts and including Parks and Recreation facilities that have existing pickleball amenities; and that the assessment include at minimum a comprehensive selection process for potential sites, a projection of costs, an analysis of optimal facility scale and/or mix of facility sizes, and an estimate of the potential economic impact of tournaments and league play, and include input from neighborhood associations in the process and that a preliminary assessment be presented during the City's upcoming Budget Workshops for the FY2025 budget, with a more formal assessment to be presented to the City Council within 120 days.



# Mary Frances Keisling Park



This text box is to remind you about the ASL translator service. Do NOT add any info in this space.

REMOVE THIS BOX ONCE THE PRESENTATION IS FINALIZED.

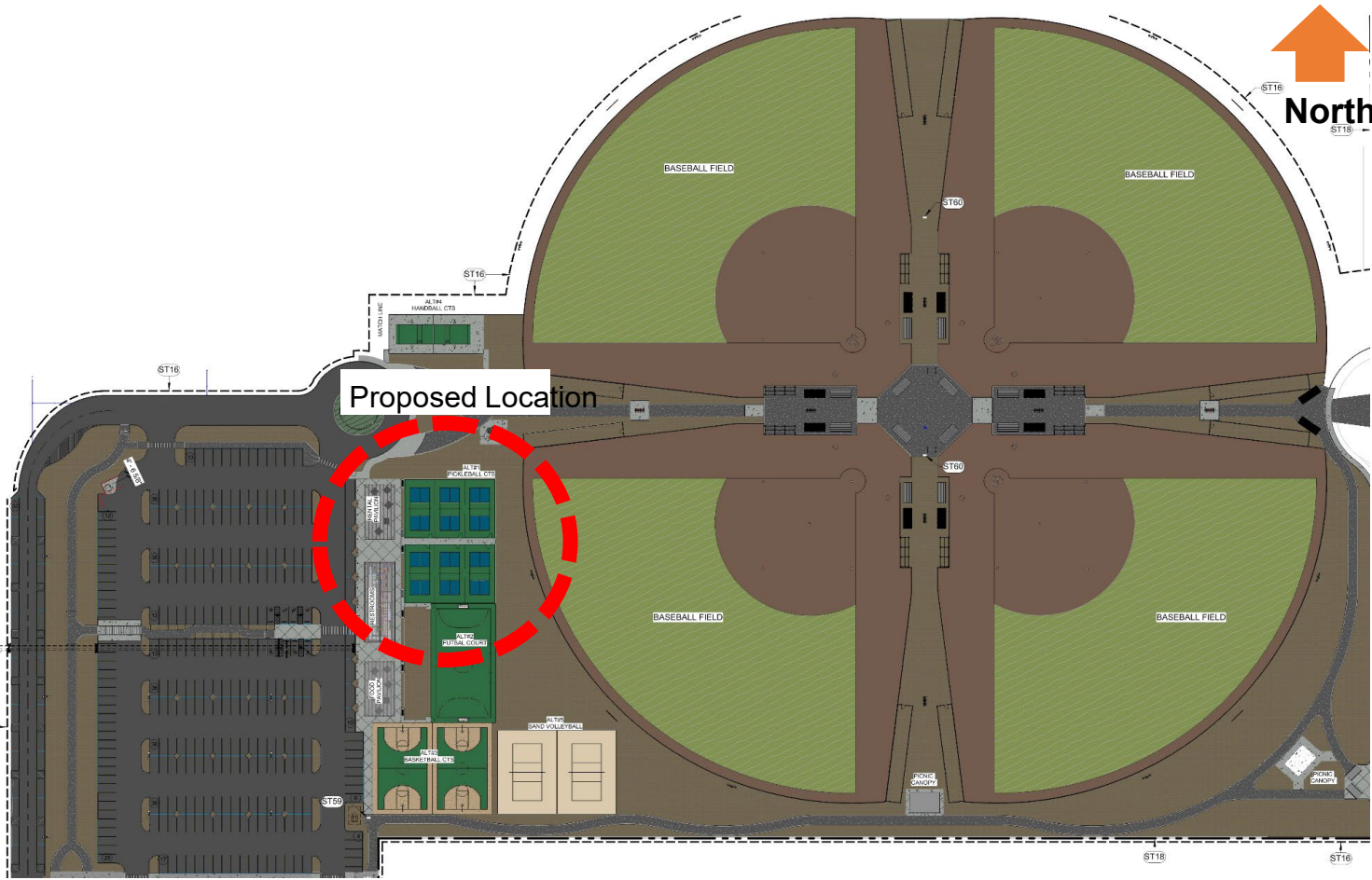
## District 1

- Master Plan Adopted 12/13/2022
- 8 Dedicated Pickleball Courts
- **Cost: \$1.8M**
- Project will potentially be funded through a public, private partnership

# Eastside Regional Park Phase II

This text box is to remind you about the ASL translator service. Do NOT add any info in this space.

REMOVE THIS BOX ONCE THE PRESENTATION IS FINALIZED.



## District 5

- 8 Dedicated Pickleball Courts
- **Cost: \$600K**
- Tentative start Spring 2025
- Parks applied for TPWL Grant as additional funding for CID project



# Lincoln Park



This text box is to remind you about the ASL translator service. Do NOT add any info in this space.

REMOVE THIS BOX ONCE THE PRESENTATION IS FINALIZED.

## District 2

- 6 Dedicated Pickleball Courts
- **Cost: \$175K - \$250K**
- Lighting \$50k, resurfacing \$100k and Fencing \$25k
- Property owned by TxDOT

# Pickleball Indoor Courts

This text box is to remind you about the ASL translator service. Do NOT add any info in this space.

REMOVE THIS BOX ONCE THE PRESENTATION IS FINALIZED.



## 16 Recreation Centers

- Open Gym Schedule
- 38 Total Courts
- 3 courts average per center
- 3 days average per week
- 4 hours average per day
- Facility Rentals After Hours

# Potential Sites Parks

This text box is to remind you about the ASL translator service. Do NOT add any info in this space.

REMOVE THIS BOX ONCE THE PRESENTATION IS FINALIZED.

- Braden Aboud Park – D1
- Nolan Richardson (adjacent property) – D2
- Nations Tobin Park – D2
- Washington Park – D2
- Hawkins Park – D3
- Jim Crouch Park – D3
- Veterans Park – D4
- Chuck Heinrich Park – D4
- Burning Mesquite Park – D5
- Walter Clark Park – D6
- Dick Shinaut Park – D6
- Argal Park – D7
- Blackie Chesher Park – D7
- Salvador Rivas Park – D7



PARKS & RECREATION  
CITY OF EL PASO

This text box is to remind you about the ASL translator service. Do NOT add any info in this space.

REMOVE THIS BOX ONCE THE PRESENTATION IS FINALIZED.

**Thank you so much for your attention!**  
**We will continue working to bring back the full assessment in October as directed.**



This text box is to remind you about the ASL translator service. Do NOT add any info in this space.

REMOVE THIS BOX ONCE THE PRESENTATION IS FINALIZED.

# Questions & Comments