

# GRANT FUNDED PROGRAM

Capital Improvement Department  
July 1<sup>st</sup>, 2024





# PROGRAM OVERVIEW

## FEDERALLY & STATE FUNDED TRANSPORTATION PROJECTS



Metropolitan Planning Organization

- Regional Priorities
- Regional Mobility Strategy (RMS) 2050



TXDOT

- Highway Safety Improvement Program (HSIP)
- Highway Bridge Program



International Bridges



Discretionary Grants

- Rebuilding American Infrastructure with Sustainability and Equity (RAISE)
- Dept of Transportation
- Federal Highway Administration (FHWA)
- Federal Transit Administration



Support CID

- Community Progress Bond
- Transportation Planning and safety



Space reserved for the ASL  
interpreter

Do not move, modify, or add  
any information on this box.





Space reserved for the ASL  
interpreter

Do not move, modify, or add  
any information on this box.

# PROGRAM OVERVIEW

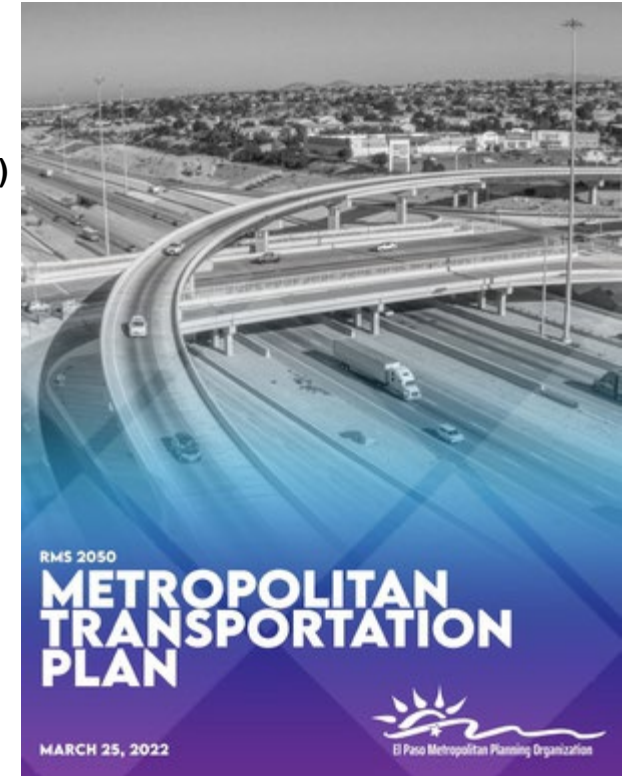
## MPO Project Selection - Cooperative, Comprehensive, and Continuous (“3-C”).

### MPO Boards

- **Transportation Policy Board (TPB)**
  - Mayor Oscar Leeser
  - Rep. Cassandra Hernandez
  - Rep. Isabel Salcido
  - Rep. Chris Canales
  - Yvette Hernandez (CID)
- **Transportation Project Advisory Committee (TPAC)**
  - Ellen Smyth (Sun Metro)
  - Tony Nevarez (Airport)
  - Joaquin Rodriguez (CID)
  - Claudia K. Garcia (Sun Metro)

## Metropolitan Transportation Plan (MTP) and Transportation Improvement Program (TIP)

- The MTP is a long range 25-30 yr plan that outlines how a metropolitan area will manage and operate its transportation systems. Updated every 4-5 years. The TIP is a short range document that outlines a 4 year period of investment.
- Projects receiving federal funds must be programmed in the MTP and TIP, TPAC makes recommendations to TPB for final action on both project lists.



Space reserved for the ASL  
interpreter

Do not move, modify, or add  
any information on this box.

# PROGRAM OVERVIEW

## MPO Federal/State funds – 12 Categories of Funding

**Category 5 (CMAQ): Congestion Mitigation and Air Quality Improvement Program**

**Category 7 (STP): Surface Transportation Program set aside for urbanized areas with population greater than 200,000 for metro mobility.**

**Category 9 (TAP): Transportation Alternatives Program set aside for urbanized areas with populations greater than 200,000**



# ACTIVE PROJECTS

## CONSTRUCTION

- Rojas Widening
- Campbell Reconstruction
- PDN Trail Magoffin Shared Use Path (SUP)
- Montecillo Rapid Transit System (RTS)
- Sean Haggerty Extension (procurement)
- ITS at BOTA/Zaragoza POE
- (procurement) Highway West SUP

## DESIGN

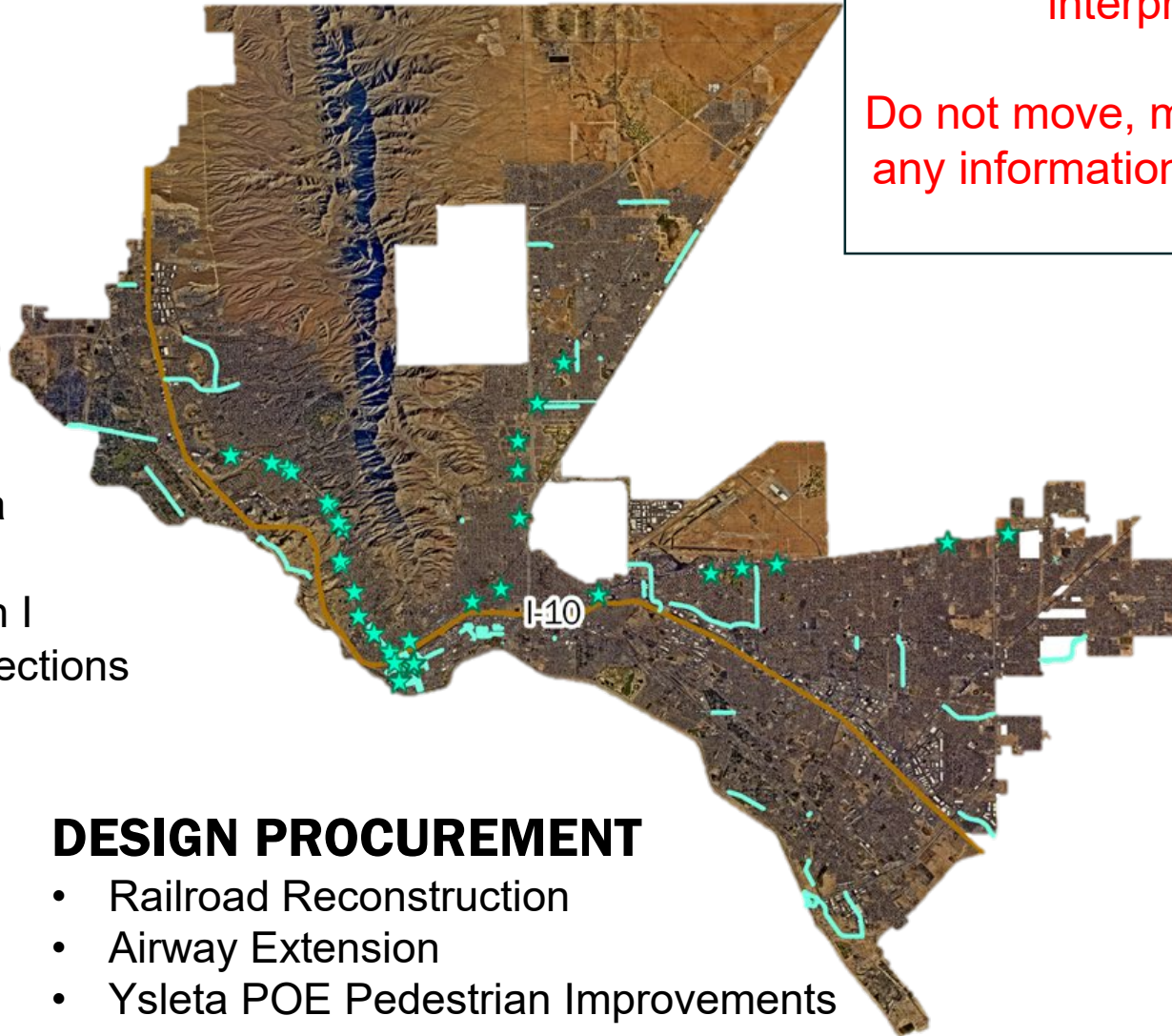
- Ysleta Dran SUP Padilla to Zaragoza
- HSIP Hercules Safety Lighting
- Downtown Bicycle Improvements Ph I
- International Bridges Condition Inspections
- Montwood Extension
- Traffic Management Center (TMC) Upgrades Ph 2 & 3
- McRae SUP Ph 1 & 2
- Piedras Reconstruction Ph 1
- Connected Bike Lanes
- Resler Extension

## DESIGN PROCUREMENT

- Railroad Reconstruction
- Airway Extension
- Ysleta POE Pedestrian Improvements

Space reserved for the ASL interpreter

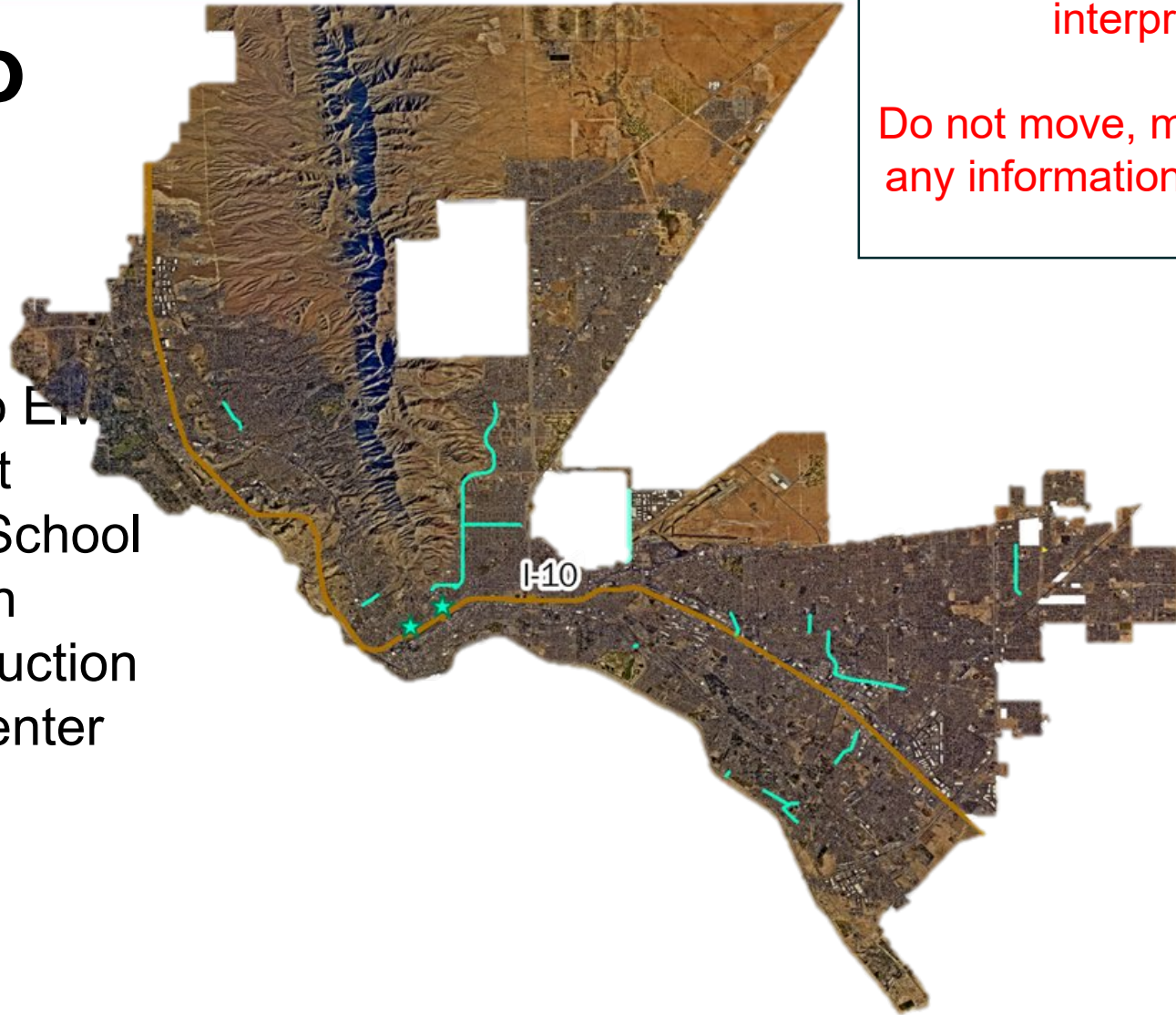
Do not move, modify, or add any information on this box.





# 2023-24 COMPLETED PROJECTS

- Bicycle Connectivity Ph 1
- Bicycle Connectivity Ph 2
- Playa Drain SUP Whittier to El
- Paso del Norte Roundabout
- Ysleta MS Safe Routes to School
- Delta Bridge Reconstruction
- Yarbrough Bridge Reconstruction
- Upper Eastside Transfer Center
- Montana RTS Corridor
- Airport RTS



Space reserved for the ASL interpreter

Do not move, modify, or add any information on this box.



## ACTIVE PROJECTS CONSTRUCTION S CAMPBELL ST.

Reconstruction of Campbell from  
6th to 9th Ave

- \$2,330,544 Estimated Project Cost
- \$1,787,302 City Contribution
- \$543,242 EPW Contribution
- Expected Completion Date: July 12, 2024



Space reserved for the ASL  
interpreter

Do not move, modify, or add  
any information on this box.



Space reserved for the ASL  
interpreter

## ACTIVE PROJECTS CONSTRUCTION ROJAS WIDENING

Reconstruction of Rojas Dr. from  
Loop 375 to Bill Burnett

- \$14,098,513 Estimated Project Cost
  - \$8,684,625 TxDOT/FHWA
  - \$1,535,452 EPW
  - \$3,878,436 City Contribution
- Expected Completion Date July 2024



r add  
box.



## ACTIVE PROJECTS CONSTRUCTION ITS OFF-SYSTEM

Installation of ITS at BOTA and  
Zaragoza POE

- \$18,152,956 Estimated Project Cost
- \$248,906 City Contribution
- Expected Completion Date July 2026



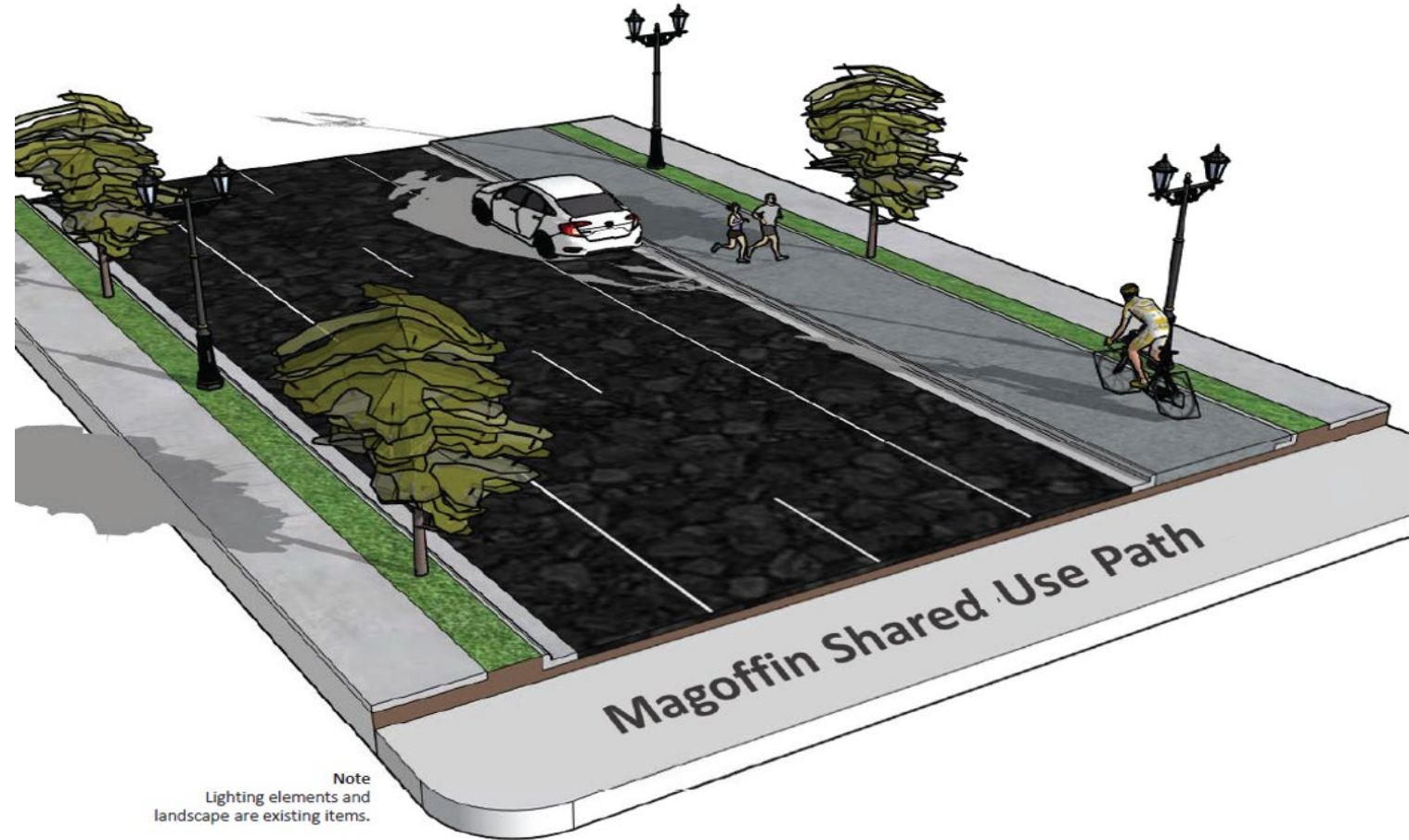
Space reserved for the ASL  
interpreter

## ACTIVE PROJECTS CONSTRUCTION

### Paso del Norte Trail, MAGOFFIN SUP

9' Shared use path on Magoffin Ave from San Antonio to Cotton.

- \$1,074,871.45 Construction Cost
  - \$1,657,743 Total Cost
  - \$320,932 City Contribution/match
- Expected Completion Date Summer 2025



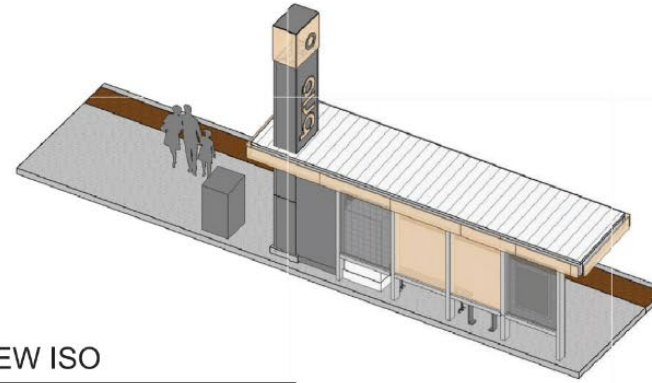


## ACTIVE PROJECTS CONSTRUCTION

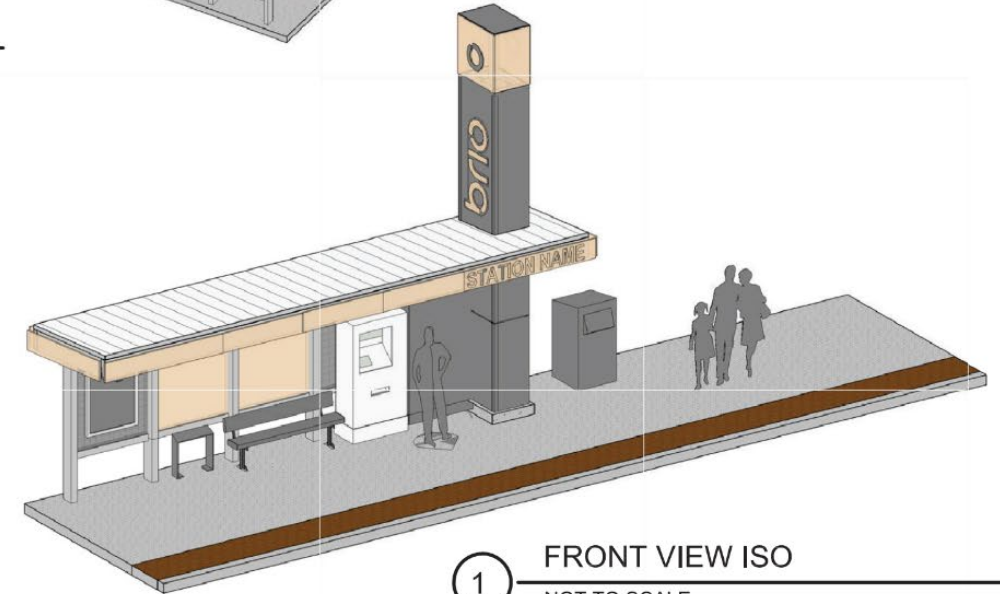
# MONTECILLO RTS

RTS Mini Station at Mesa & Argonaut.

- \$387,119.87 Estimated Project Cost
  - \$309,695.90 TxDOT/FHWA
  - \$77,423.97 City Contribution/match
- Expected Completion Date Spring 2025



2 BACK VIEW ISO  
NOT TO SCALE



1 FRONT VIEW ISO  
NOT TO SCALE

Space reserved for the ASL  
interpreter

Do not move, modify, or add  
any information on this box.



---

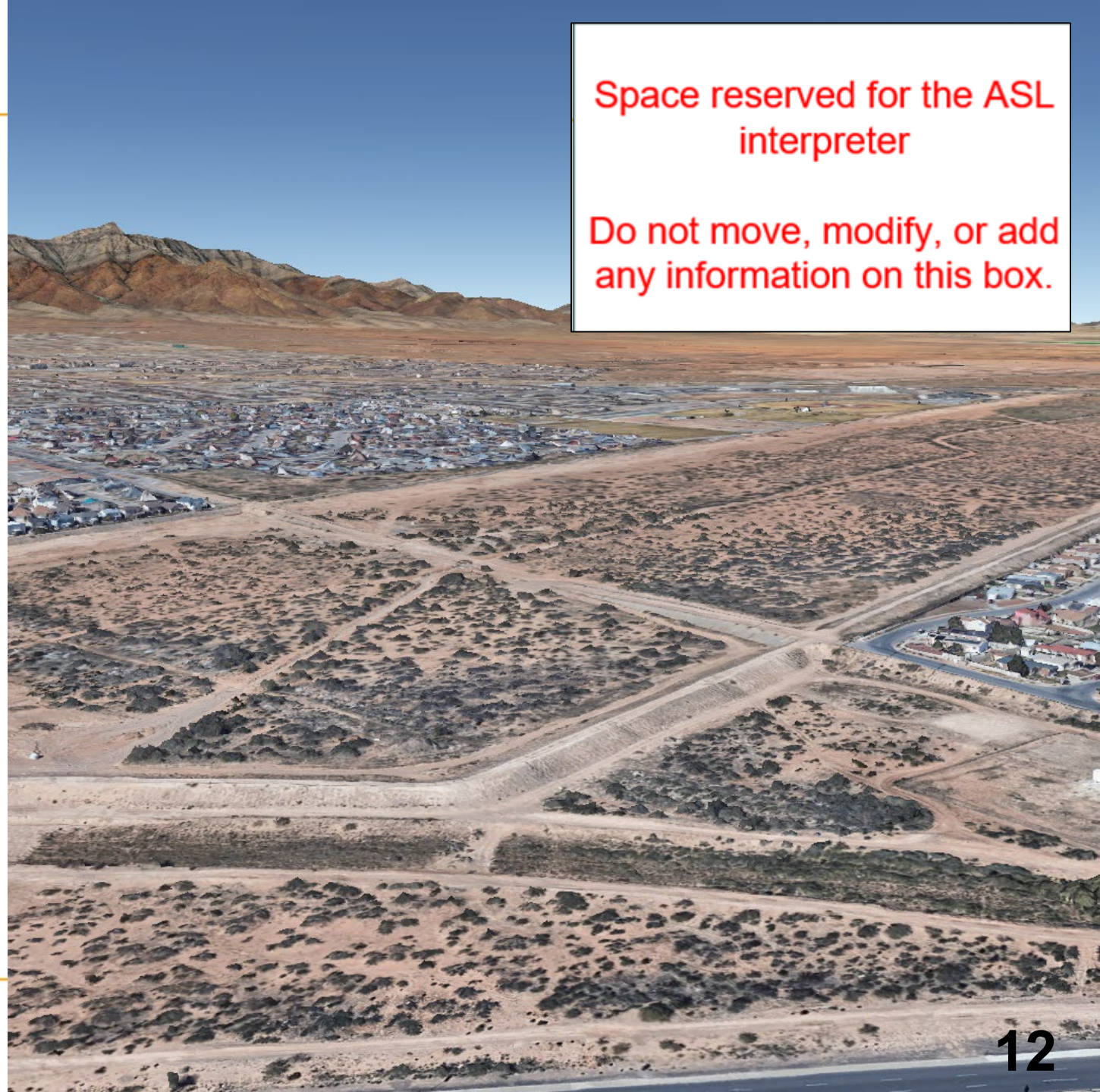
## ACTIVE PROJECTS CONSTRUCTION SEAN HAGGERTY

Completes the Sean Haggerty Dr connection over the NE Greenbelt levee from McCombs to Dyer.

- \$34,247,052 Estimated Project Cost
  - \$23,649,312 TxDOT/FHWA
  - \$3,743,914 EPW
  - \$7,053,661 City Contribution/match
- Expected Completion Date Spring 2027

Space reserved for the ASL  
interpreter

Do not move, modify, or add  
any information on this box.





# 2025-28 Transportation Improvement Program TIP

Space reserved for the ASL  
interpreter

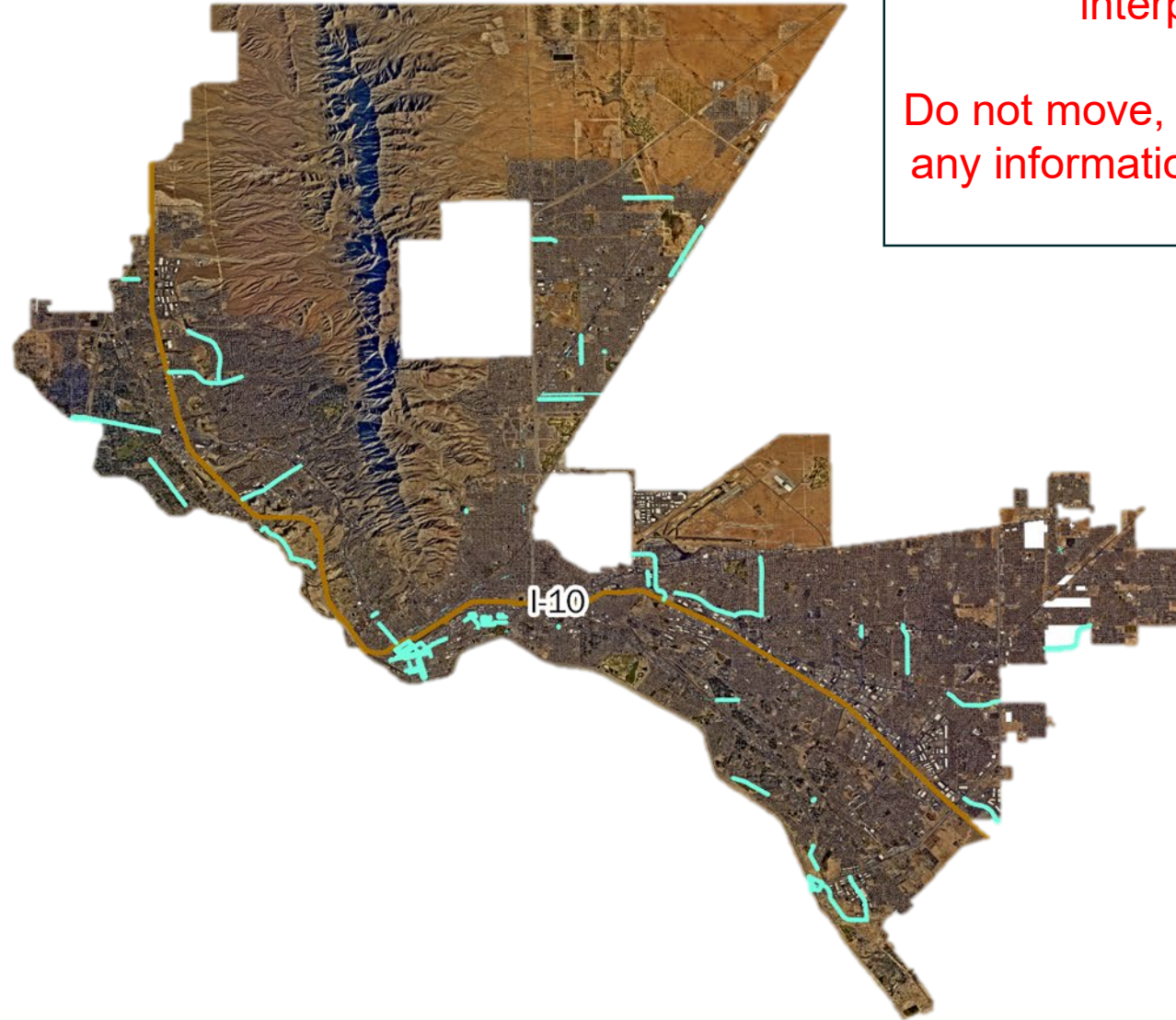
Do not move, modify, or add  
any information on this box.

## FY 2025

- Downtown Bicycle Improvements Ph I
- Preliminary Engineering (PE) Phase Buffalo Soldier St Improvements
- PE Phase Sunland Park SUP
- TMC Upgrades Ph 2 & Ph 3
- Ysleta POE Ped Safety Improvements

## FY 2026

- PE Phase Playa Drain SUP (Yarbrough to Midway)
- PE Phase Sun Valley St Improvements (Gtwy N to Kenworthy)
- Railroad Dr Widening & Reconstruction
- TMC Upgrades Ph 4 & Ph 5





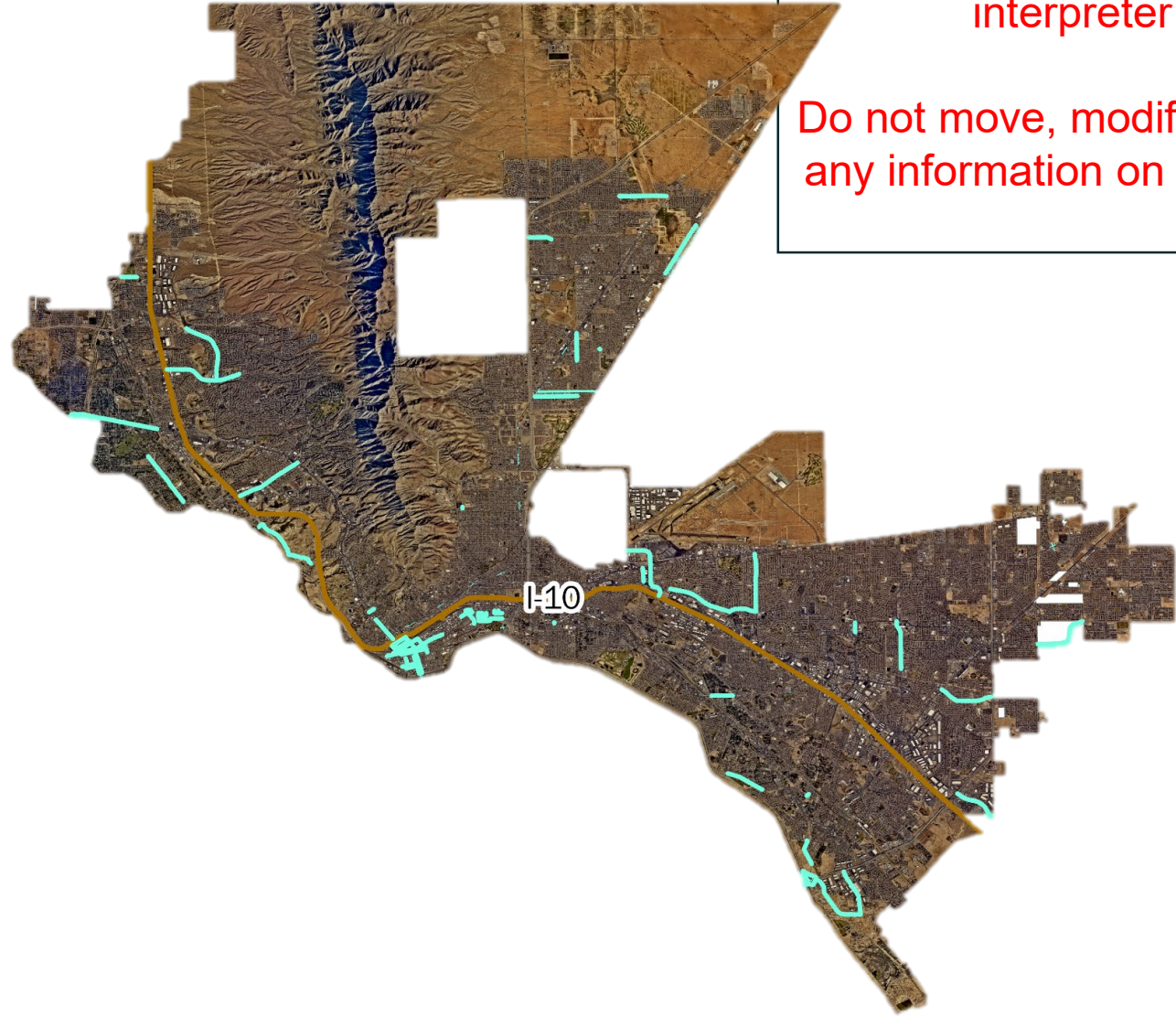
# 2025-28 TIP

## FY 2027

- Bicycle Infrastructure Citywide
- Buffalo Soldier St Improvements
- PE Phase Border Traveler ITS
- PE Phase Video Surveillance and Count Stations Ph II
- Playa Drain SUP (Yarborough to Midway)
- Sun Valley St Improvements (Gtwy N to Kenworthy)
- Sunland Park Shared Use Path

## FY 2028

- Border Traveler ITS
- Video Surveillance and Count Stations Ph II



Space reserved for the ASL  
interpreter

Do not move, modify, or add  
any information on this box.



Space reserved for the ASL  
interpreter

Do not move, modify, or add  
any information on this box.

---

# FUNDING HISTORY

## 2018-2023

- \$150,245,109 in Projects
- \$51,873,849 in City Match and Contributions (35%)

## PAST FUNDING

- Historically funded by COs
- \$7.7M in 2017
- \$10.9M in 2018
- No direct funding allocated since 2019

# 3 YR FUNDING NEEDS

Local Contribution Required, not exhaustive list of all projects

Space reserved for the ASL interpreter

Do not move, modify, or add any information on this box.

#	Project Name	Total Estimated Project Cost	City Portion	Funds Available	FY24	FY25	FY26
1	Sean Haggerty Dr. Extension	28,095,385.00	7,700,000.00	\$102,743.34	\$6,800,000.00		
3	Downtown Bicycle Infrastructure	2,728,712.00	\$331,706.00	\$24,195.05		\$800,000.00	
5	McRae SUP Ph I Montwood to Album	3,080,099.00	1,125,001.80	\$819,364.20		\$305,637.60	
6	Traffic Management Center Ph 1 Design	5,360,329.00	432,000.00	\$10,776.00		\$300,000.00	
8	Traffic Management Center Ph 3 - Construction	5,000,000.00	3,200,000.00			\$3,200,000.00	
11	CBD4 Remaining Streets (copied fr 2021)	16,452,680.00	5,937,330.00	\$527,176.40		\$5,812,330.00	
13	Connected Bike Lanes TASA	1,934,910.82	371,851.00		\$90,000.00		
14	Alps Dr - Construction	1,050,000.00	31,500.00			\$26,250.00	
15	Concepcion St - Construction	1,875,000.00	56,250.00			\$46,875.00	
16	Hollings St SB -Construction	1,200,000.00	36,000.00			\$30,000.00	
26	Buffalo Soldier street improvements - design	8,441,816.00	300,000.00			\$300,000.00	
27	Sunland Park SUP - design	5,292,041.20	360,000.00			\$360,000.00	
33	Traffic Management Center upgrae Ph 4 - Construction	5,180,000.00					\$1,750,074.00
34	Sun Valley St Imp Gtwy Blvd N to Kenworthy - Design	1,000,652.00					\$1,500,949.00
35	Railroad Construction	19,421,338.00	6,077,068.00				\$6,077,068.00
36	Playa Drain SUP (Yarborough to Midway) Design	1,597,204.00					\$320,000.00
37	Carolina Street improvements - Construction	6,252,552.00					\$1,136,040.00
38	Traffic Management Center Ph 5 - Construction	6,294,000.00					\$1,494,000.00
				Totals	\$6,890,000.00	\$11,181,092.60	\$12,278,131.00



Space reserved for the ASL  
interpreter

Do not move, modify, or add  
any information on this box.

---

## Requested Council Action

**Authorize the use of funds from Capital Asset Sales to fund the MPO Match for FY24 and FY25**

- **FY24 - \$6,890,000.00**
- **FY25 - \$11,181,092.60**

## MISSION



Deliver exceptional services to support a high quality of life and place for our community.

## VISION



Develop a vibrant regional economy, safe and beautiful neighborhoods and exceptional recreational, cultural and educational opportunities powered by a high performing government.



## VALUES

Integrity, **R**espect, **E**xcellence,  
**A**ccountability, **P**eople

Space reserved for the ASL interpreter

Do not move, modify, or add any information on this box.



# GRANT FUNDED PROGRAM

## Other Completed Projects





# COMPLETED PROJECT

## PDN ROUNDBOUT

Space reserved for the ASL  
interpreter

Do not move, modify, or add  
any information on this box.





# COMPLETED PROJECT

# DELTA BRIDGE

Space reserved for the ASL  
interpreter

or add  
is box.





COMPLETED PROJECT

# YARBROUGH BRIDGE

Space reserved for the ASL  
interpreter

ify, or add  
this box.





## COMPLETED PROJECT

### YSLETA MS SRTS



### PLAYA DRAIN SUP WHITTIER - ELVIN



Space reserved for the ASL  
interpreter

Do not move, modify, or add  
any information on this box.



COMPLETED PROJECT

# UPPER EASTSIDE TRANSFER CENTER

Space reserved for the ASL  
interpreter

Do not move, modify, or add  
any information on this box.





## COMPLETED PROJECT

# Airport RTS

Space reserved for the ASL  
interpreter

Do not move, modify, or add  
any information on this box.

