



# G2 Secure Staff, LLC.

Sam Rodriguez, Airport Director

# Lease Terms

- 1-year lease with the option to renew for four (4) one (1) year terms.
- Generating \$20,916.56 per year or \$1,743.05 per month.

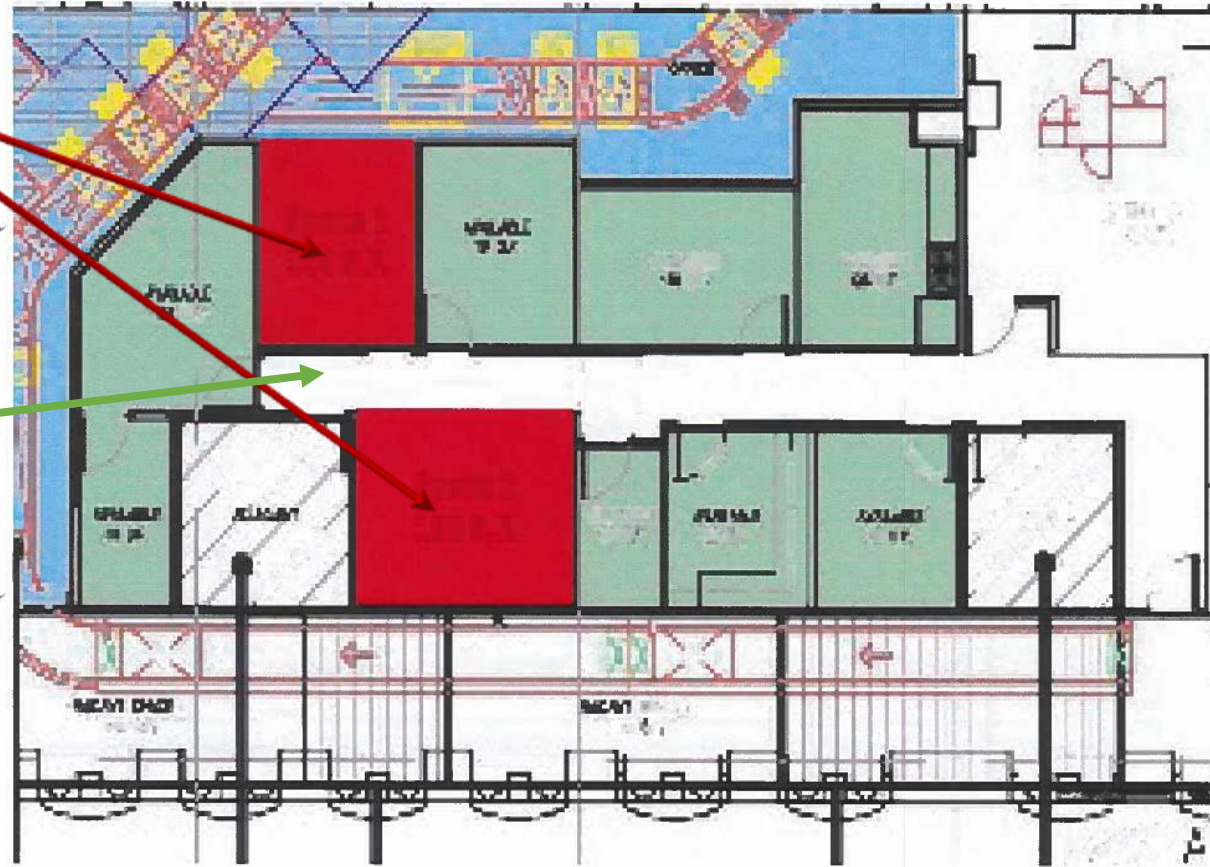


# Terminal Main Lobby East End

266 SF  
Office  
Space

62 SF  
Shared  
Hallway

Total  
Leased  
Space is  
328 SF



# Request for action

That the City Manager, or designee, be authorized to sign an Office Space Rental Agreement with G2 Secure Staff, LLC.

## MISSION



Deliver exceptional services to support a high quality of life and place for our community.

## VISION



Develop a vibrant regional economy, safe and beautiful neighborhoods and exceptional recreational, cultural and educational opportunities powered by a high performing government.



## VALUES

Integrity, **R**espect, **E**xcellence,  
**A**ccountability, **P**eople



## MISIÓN



Brindar servicios excepcionales para respaldar una vida y un lugar de alta calidad para nuestra comunidad

## VISIÓN



Desarrollar una economía regional vibrante, vecindarios seguros y hermosos y oportunidades recreativas, culturales y educativas excepcionales impulsadas por un gobierno de alto desempeño



## VALORES

Integridad, Respeto, Excelencia,  
Responsabilidad, Personas