



CITY OF EL PASO

# Montwood Extension

CRRMA Interlocal Agreement for ROW Acquisition & Annexation.

This text box is to remind you about the ASL translator service. Do NOT add any info in this space.

REMOVE THIS BOX ONCE THE PRESENTATION IS FINALIZED.

This text box is to remind you about the ASL translator service. Do NOT add any info in this space.

REMOVE THIS BOX ONCE THE PRESENTATION IS FINALIZED.

# Montwood Extension History

- 2018 – Initial Coordination with County of El Paso
- March 2022 – Transportation Policy Board Identifies Montwood Extension as regional priority in RMS 2050 MTP
- August 2022 – County initiates design through RMA
- November 2022 – Community Progress Bond Prop A voters approve funding
- **Currently project is at 30% Design**

This text box is to remind you about the ASL translator service. Do NOT add any info in this space.

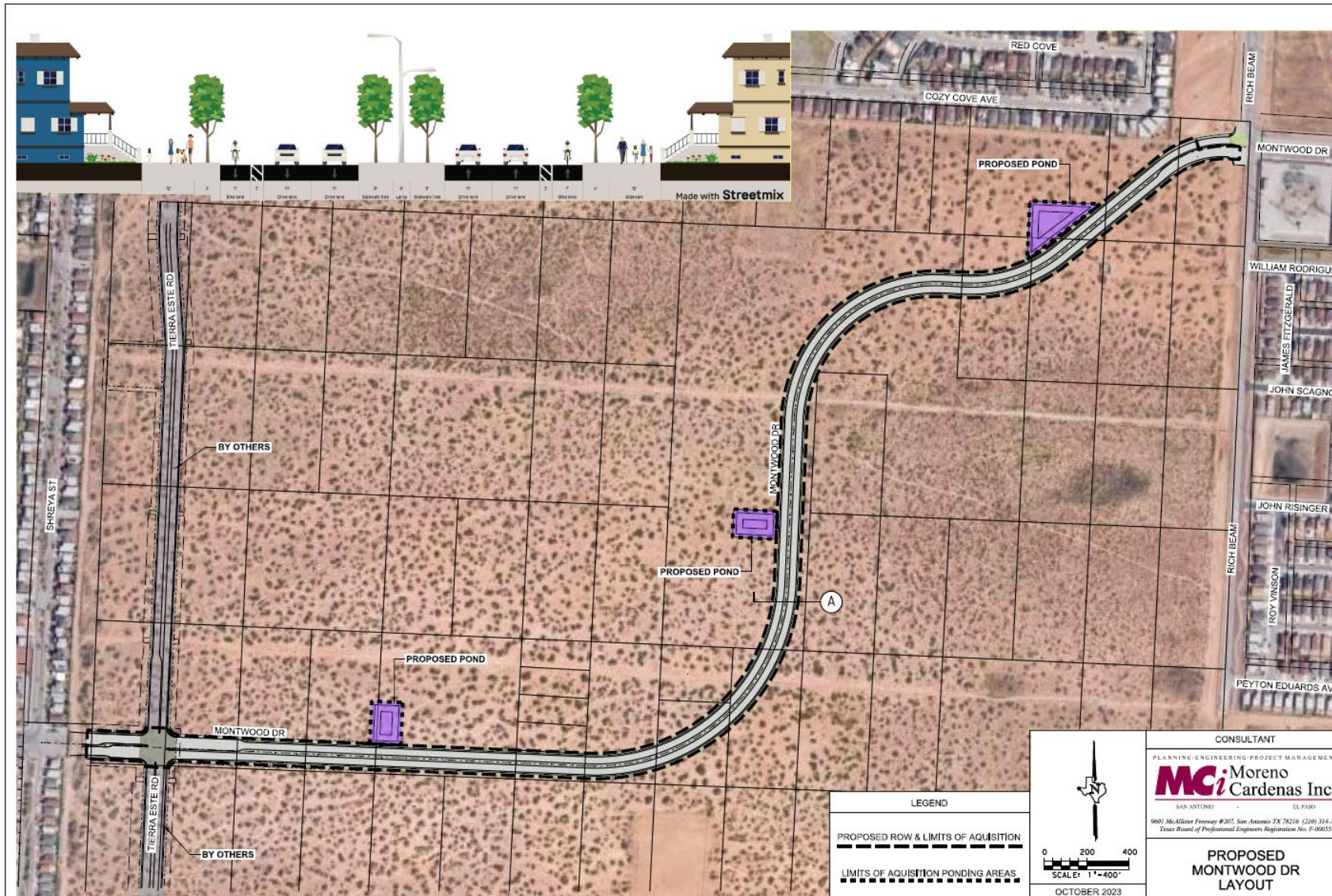
REMOVE THIS BOX ONCE THE PRESENTATION IS





This text box is to remind you about the ASL translator service. Do NOT add any info in this space.

REMOVE THIS BOX ONCE THE PRESENTATION IS FINALIZED.



# CRRMA Agreement

This text box is to remind you about the ASL translator service. Do NOT add any info in this space.

REMOVE THIS BOX ONCE THE PRESENTATION IS FINALIZED.

- **Scope of Work**
  - ROW Acquisition
    - Project Management
    - Engineering & Surveying
    - Title
    - Appraisals
  - Annexation
- **Agreement Term 18 Months**
- **City has final approval over purchase price**
- **CRRMA will initiate annexation process through standard application.**
- **Total Cost (Not to Exceed) - \$ 475,655.86**
- **Funding Source – 2022 Community Progress Bond**

# Requested Action

This text box is to remind you about the ASL translator service. Do NOT add any info in this space.

REMOVE THIS BOX ONCE THE PRESENTATION IS FINALIZED.

- **Approval of interlocal agreement for ROW acquisition and annexation services.**



## MISSION



Deliver exceptional services to support a high quality of life and place for our community.

## VISION



Develop a vibrant regional economy, safe and beautiful neighborhoods and exceptional recreational, cultural and educational opportunities powered by a high performing government.



## VALUES

Integrity, Respect, Excellence,  
Accountability, People

This text box is to remind you about the ASL translator service. Do NOT add any info in this space.

REMOVE THIS BOX ONCE THE PRESENTATION IS FINALIZED.

## MISIÓN



Brindar servicios excepcionales para respaldar una vida y un lugar de alta calidad para nuestra comunidad

## VISIÓN



Desarrollar una economía regional vibrante, vecindarios seguros y hermosos y oportunidades recreativas, culturales y educativas excepcionales impulsadas por un gobierno de alto desempeño



## VALORES

Integridad, Respeto, Excelencia,  
Responsabilidad, Personas

This text box is to remind you about the ASL translator service. Do NOT add any info in this space.

REMOVE THIS BOX ONCE THE PRESENTATION IS FINALIZED.