

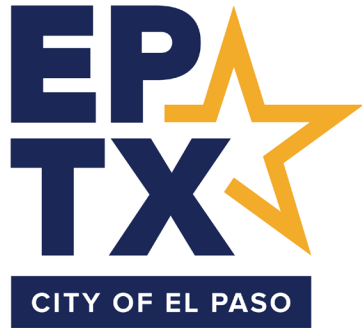
Streets Focus

November 21, 2023

Richard Bristol, Director

Streets and Maintenance Department





This text box is to remind you about the ASL translator service. Do NOT add any info in this space.

REMOVE THIS BOX ONCE THE PRESENTATION IS FINALIZED.



Presentation Topics

- Update on Citywide Resurfacing Program
- Report on Unpaved Rights of Way Citywide
- New Program - Traffic Management Center Upgrade
- New Program - Solar Lighting Pilot Project

What Makes a Street Deteriorate?

- Historical minimal and inconsistent investment in street resurfacing and street reconstruction (multiple decades)
- Through development many streets have assumed larger traffic volumes than they were constructed to support
- Damage from storm water runoff and drainage systems – water penetrating pavement deteriorates the road base and subgrade
- Impact of illegal pavement cuts

This text box is to remind you about the ASL translator service. Do NOT add any info in this space.

REMOVE THIS BOX ONCE THE PRESENTATION IS FINALIZED.



General Facts About City Streets

This text box is to remind you about the ASL translator service. Do NOT add any info in this space.

REMOVE THIS BOX ONCE THE PRESENTATION IS FINALIZED.

- Original construction of a street comes through the development process
 - As new streets are accepted along with new subdivisions, they become an asset for the City to maintain
- Expected useful life of street pavement surface in El Paso is at least 25 years; soil conditions, traffic volumes, drainage on a street, and other factors can cause pavement deterioration sooner
- Within the City Limits, the City maintains approximately 6,117 streets
 - 5,769 Residential Streets – (94% of network)
 - 188 Arterial Streets (example – Yarbrough)
 - 160 Collector Streets (example – Escondido)
- Over 2,500 centerline miles
 - Does not include State Highways, County Roads, and private streets



Why Does the City Monitor Pavement Condition Index (PCI)

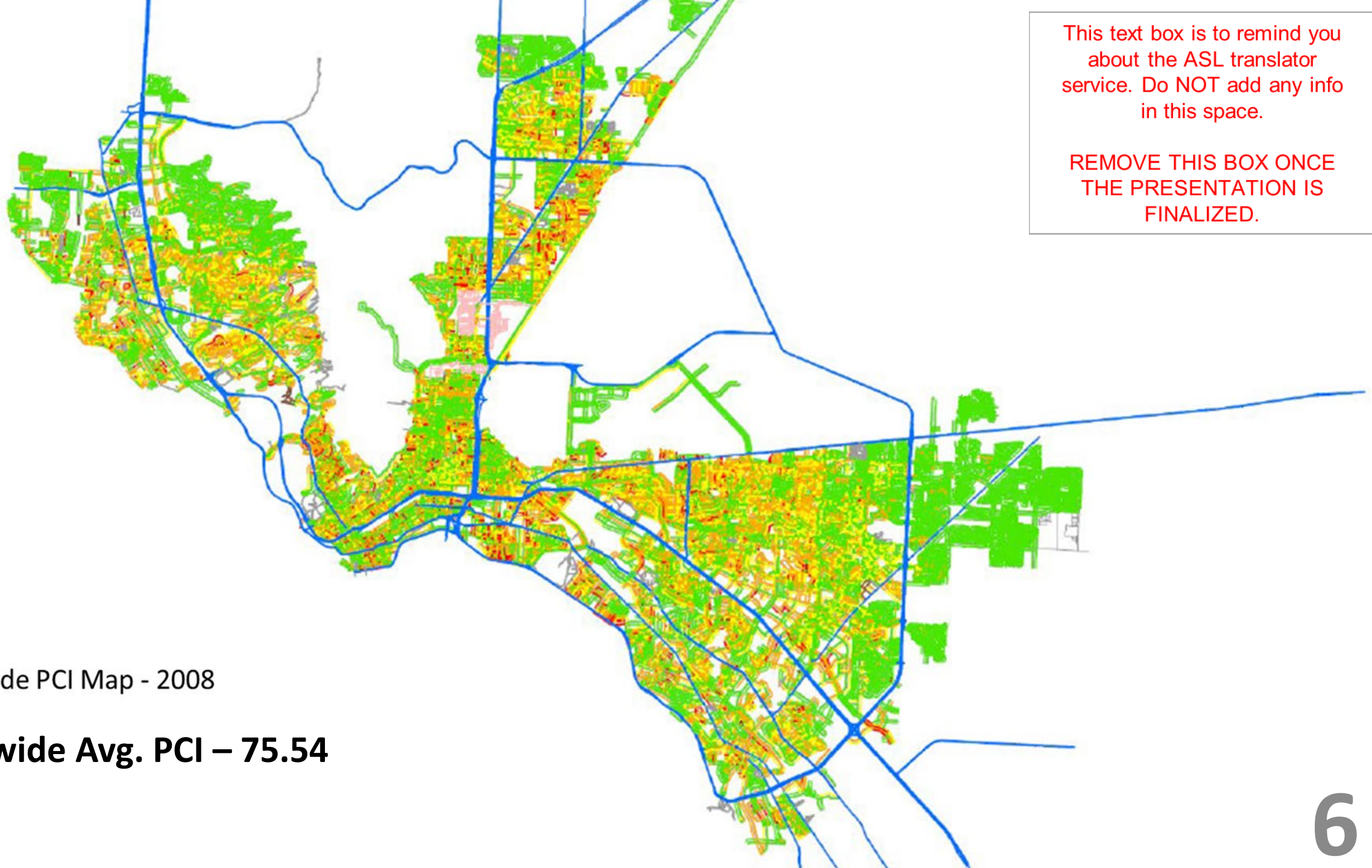
- Data collection and analysis for decision making
- Pavement Condition Index (PCI) is an assessment the general condition of pavement
- Provides a numerical ranking for the general condition of pavement on a scale of 0 - 100
 - New streets = 100;
 - Very poor < 30
 - City average 65 (Fair)
 - Lowest ranking streets are prioritized
- This tool provides us a snap shot glance in time of the conditions of our pavement that can be monitored over multi years to identify our areas of deterioration and concern; project planning tool
- The City has had three surveys completed for Pavement Conditions

This text box is to remind you about the ASL translator service. Do NOT add any info in this space.

REMOVE THIS BOX ONCE THE PRESENTATION IS FINALIZED.

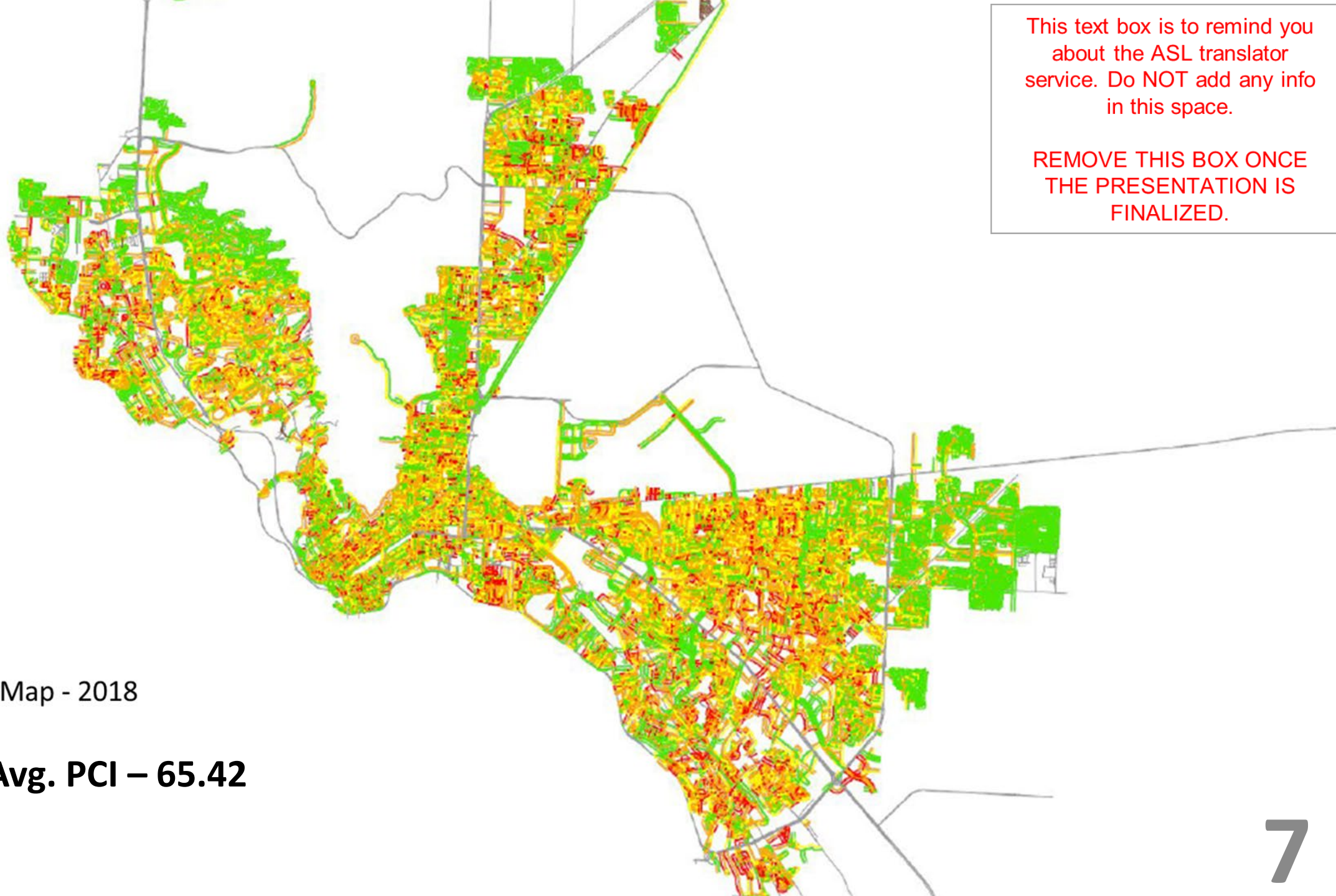
This text box is to remind you about the ASL translator service. Do NOT add any info in this space.

REMOVE THIS BOX ONCE THE PRESENTATION IS FINALIZED.



Citywide PCI Map - 2008

Citywide Avg. PCI – 75.54

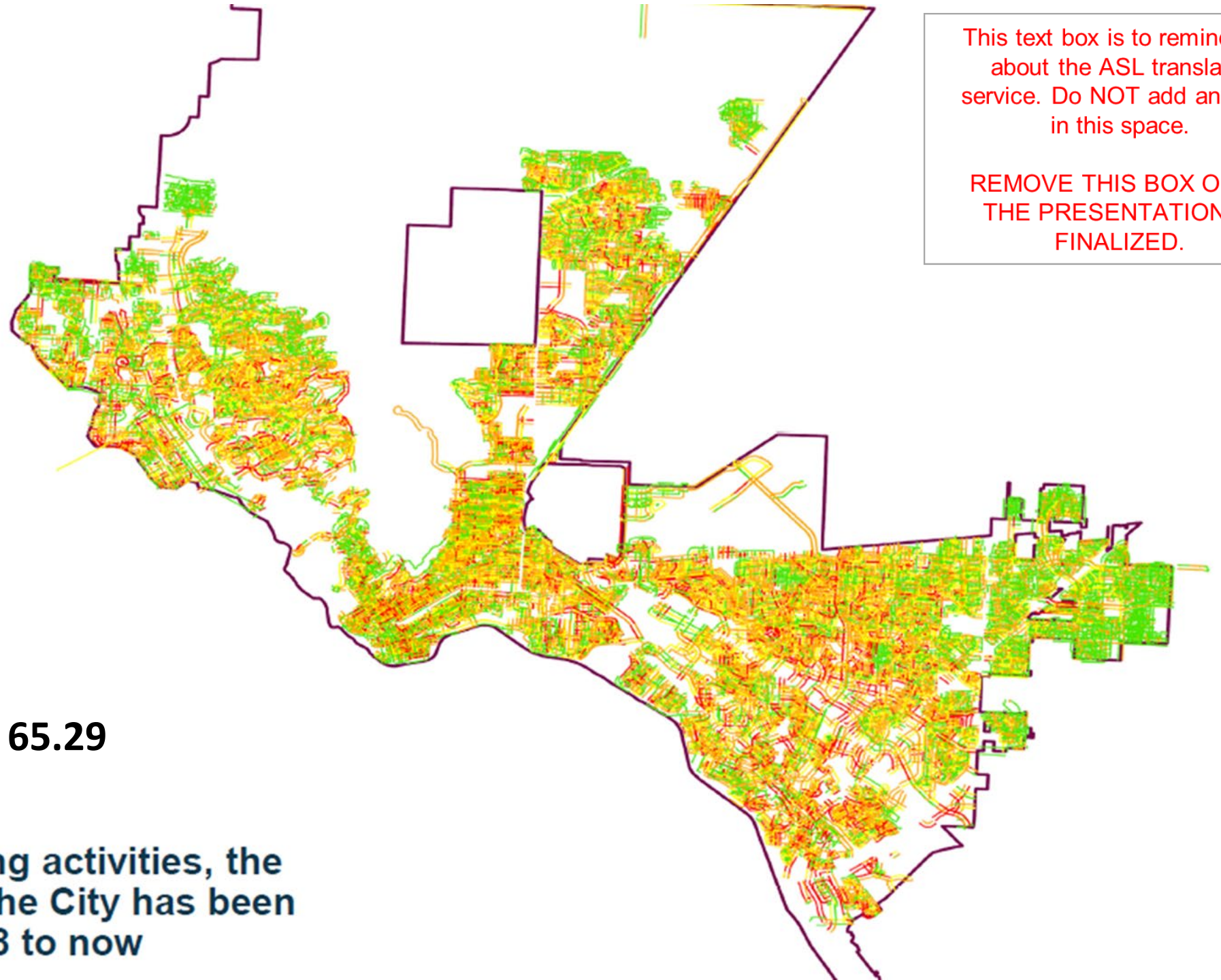


This text box is to remind you about the ASL translator service. Do NOT add any info in this space.

REMOVE THIS BOX ONCE THE PRESENTATION IS FINALIZED.

Citywide PCI Map - 2018

Citywide Avg. PCI – 65.42



This text box is to remind you about the ASL translator service. Do NOT add any info in this space.

REMOVE THIS BOX ONCE THE PRESENTATION IS FINALIZED.

Citywide Avg. PCI – 65.29

Due to ongoing paving activities, the average PCI across the City has been maintained from 2018 to now

El Paso PCI's

This text box is to remind you about the ASL translator service. Do NOT add any info in this space.

REMOVE THIS BOX ONCE THE PRESENTATION IS FINALIZED.

Presently more than 50% of streets in fair to very poor condition

PCI PAVEMENT CONDITION INDEX

PCI Range	Condition Description	2022 Data % of Network	2018 Data % of Network	2008 Data % of Network
91-100	Excellent	11.57 %	27.66 %	26.75 %
81-90	Very Good	17.52 %	14.16 %	22.72 %
71-80	Good	16.16 %	15.48 %	17.06 %
61-70	Fair	12.21 %	10.31 %	17.59 %
43-60	Marginal	25.08 %	19.56 %	10.46 %
21-42	Poor	17.41 %	10.06 %	5.00 %
0-20	Very Poor	0.05 %	2.77 %	0.42 %

COEP PCI Average	65.29	65.42	75.54
Percentage Good or Higher	45.25 %	57.30 %	66.5 %
Percentage Fair or Lower	54.75 %	42.70 %	33.5 %

This text box is to remind you about the ASL translator service. Do NOT add any info in this space.

REMOVE THIS BOX ONCE THE PRESENTATION IS FINALIZED.

Funding Authorizations for Street Resurfacing

- **Annual Allocation (PayGo)**
 - \$7,000,000 for Residential Street Resurfacing
 - \$3,000,000 for Collectors/Arterials Resurfacing
- **November 8, 2022 Voters approved \$272.48 M General Obligation Bonds for Three Propositions:**
 - \$237 M for street infrastructure - 61.3% of voters
 - \$20 M for park improvements - 53% of voters
 - \$5 M to study and implement climate change projects - 50.6% of voters
- The bond will provide ten years of funding for resurfacing projects

Resurfacing Program Update

- **November 8, 2022** – Streets Bonds approved; included **\$237** Million for Street Infrastructure Improvements
- **January 30, 2023** – Street locations for **Two Year Rollout Plan for Resurfacing - FY2024 and FY2025** - approved at City Council
- Contracts were Solicited in **Fall/Winter 2022/23**; Bids Opened in Winter 2023
- Bid protests and legal challenges created delays requiring us to revise the Roll Out plan
- As of **Sept 2023** we have three active resurfacing contracts in full operation



This text box is to remind you about the ASL translator service. Do NOT add any info in this space.

REMOVE THIS BOX ONCE THE PRESENTATION IS FINALIZED.

Active Resurfacing Contracts

This text box is to remind you about the ASL translator service. Do NOT add any info in this space.

REMOVE THIS BOX ONCE THE PRESENTATION IS FINALIZED.

ZTEX – Contract extended for period of July 2022 through July 2024 - \$15.8 million contract Residential & Collectors PayGO; Original contract was 07-05-2022 to 07-04-2023

July 2022 – July 2024

International Eagle – Contract period of Sept 2023 through Sept 2025 - \$18.2 million contract – 2022 Bond Arterials

Sep. 2023 – Sep. 2025

Allied Paving Co. – Contract period of Sept 2023 through Sept 2025 - \$15.7 million contract – 2022 Bond Residential/PayGo

Sep. 2023 – Sep. 2025

UnPaved Rights Of Way - Citywide

13

This text box is to remind you about the ASL translator service. Do NOT add any info in this space.

REMOVE THIS BOX ONCE THE PRESENTATION IS FINALIZED.

There are unpaved streets within the City limits that require construction of a street to meet our subdivision standards

Streets and CID are working on identifying these streets and establishing an action plan for them

- Some of property owners on unpaved streets have approached the City requesting the streets be constructed
- Some property owners in the past have requested these streets stay as they are

There are **1,687** Alley Segments City-Wide

- Presently **1,136 (67%)** are Paved and **551 (33%)** are Unpaved
- As part of our Air Quality Non Attainment Status
 - The City has a mandate from the EPA to pave unpaved alleys – incremental funding provided in Env Fee Operating Budget
 - Along with this mandate is a requirement to sweep streets four times annually

UnPaved Streets Inventory- Citywide

This text box is to remind you about the ASL translator service. Do NOT add any info in this space.

REMOVE THIS BOX ONCE THE PRESENTATION IS FINALIZED.

District	Street Name	From	To	Class	District	Street Name	From	To	Class
1	ETHEL	Arroyo	Arroyo	LOCAL	4	O'TOOLE	O'Brian	Dead End	LOCAL
1	STRAHAN	LA Union Wasteway Canal	6000 Strahan	LOCAL	4	PHEASANT RD	Sun Valley	Dyer	LOCAL
2	HANLEY	Cul de sac	Tampa	LOCAL	6	DIAMOND HEAD	Zaragoza	Kuna Loop	LOCAL
2	AURORA	Russell	Dead End	LOCAL	6	KUNA LOOP	Diamond Head	Diamond Head	LOCAL
2	JUSTUS	Pierce	Lincoln	LOCAL	6	PALI	Zaragoza	Diamond Head	LOCAL
2	MARTINEZ	Dead End	Laredo	LOCAL	7	KEENEY	Alameda	Landon	LOCAL
2	SAN JOSE	Dead End	Ohio	LOCAL	7	LANDON	Alameda	Keeney	LOCAL
4	O'BRADY	Dyer	O'Riley	LOCAL	7	RANGER	Tower Trail	Dead End	LOCAL
4	O'BRIAN	O'Hara	Dead End	LOCAL	7	IVEY	North Loop	Dead End	LOCAL
4	O'CONNOR	Dyer	O'Malley	LOCAL	8	CHARIOT WAY	Dead End	Mesita	LOCAL
4	O'DELL	Dyer	O'Donnell	LOCAL	8	CHICO CT	Rosewood	Cedar	LOCAL
4	O'DONNELL	Dyer	Dead End	LOCAL	8	ATLANTA	Dead End	Idaho	LOCAL
4	O'HARA	Dyer	Dead End	LOCAL	8	HART	Dead End	Paisano	LOCAL
4	O'MALLEY	O'Conner	Dead End	LOCAL	8	IDAHO	Murchison	Dead End	LOCAL
4	O'RILEY	Dyer	O'Donnell	LOCAL	8	LAUREL	Magoffin	Texas	LOCAL
4	O'ROURKE	Dyer	O'Donnell	LOCAL	8	TRACY	Cliff	Dead End	LOCAL

This text box is to remind you about the ASL translator service. Do NOT add any info in this space.

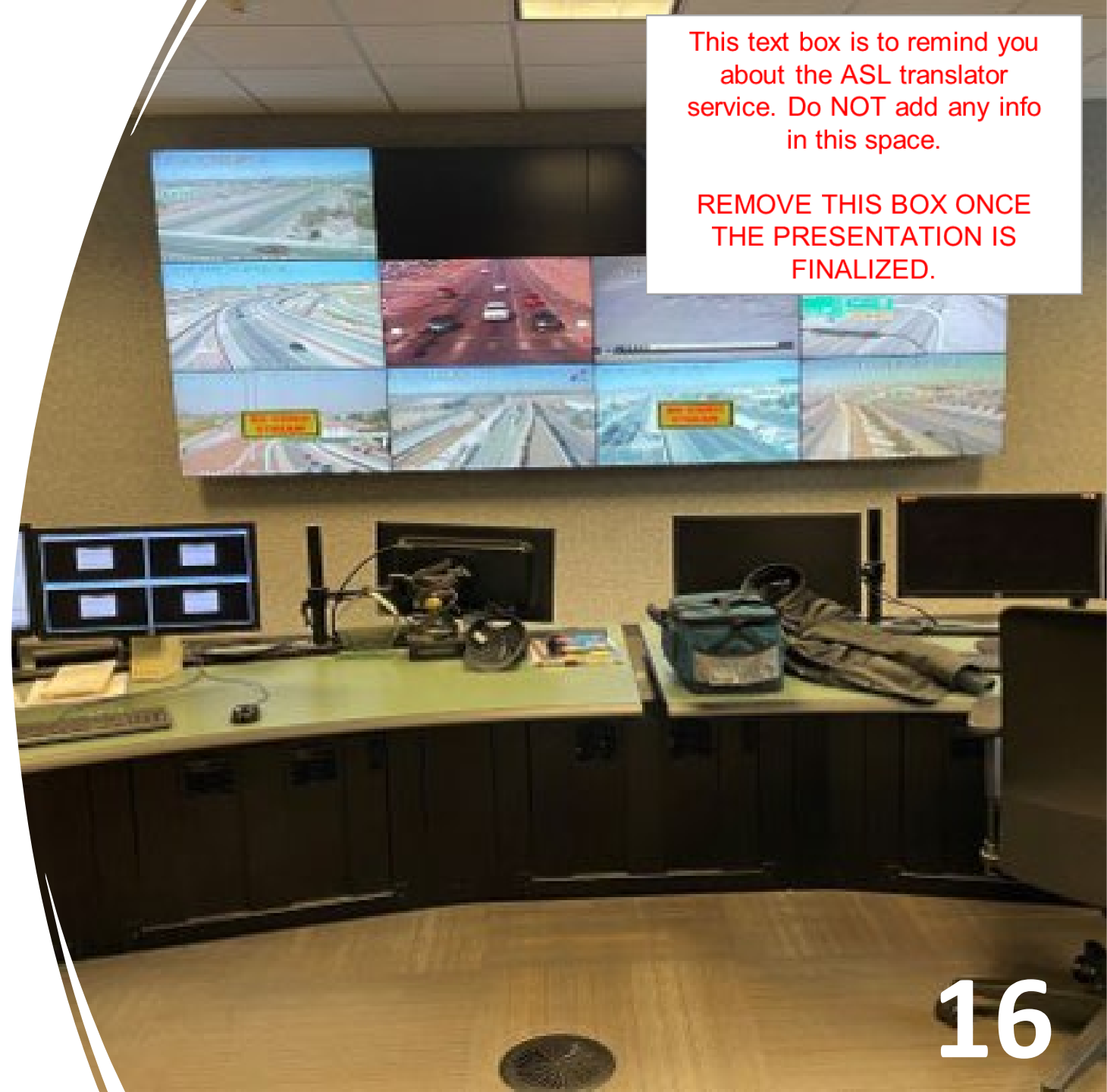
REMOVE THIS BOX ONCE THE PRESENTATION IS FINALIZED.

New Program

Traffic Management Center (TMC) and Traffic Signal System Upgrade

Traffic Management Center and Traffic Signal System Upgrade

- The City is currently entering into a multi-year project that will upgrade the **City's Traffic Management Center (TMC) and Traffic Signal System**
- The funding for the project was secured through the MPO
- The Traffic Management Center, located at 7968 San Paulo and is the Control Center for our signalization system
- The upgrade will include upgrades of the **TMC and 760 Signalized Intersections**; signal control system, traffic cabinets, detection cameras, and communications infrastructure



This text box is to remind you about the ASL translator service. Do NOT add any info in this space.

REMOVE THIS BOX ONCE THE PRESENTATION IS FINALIZED.

Signal Control System

Current system is aging and does not have advanced technology features

- **McCain 170 System** – System has been in use in the City of El Paso since the 1990's
- Current system is no longer in production and the City will be upgrading to a modernized product with advanced features

This text box is to remind you about the ASL translator service. Do NOT add any info in this space.

REMOVE THIS BOX ONCE THE PRESENTATION IS FINALIZED.



170 Controllers

170E
170E HC11
170 ATC HC11



The New System Will have ATC Features

Advanced Traffic Controller



Product Example

This text box is to remind you about the ASL translator service. Do NOT add any info in this space.

REMOVE THIS BOX ONCE THE PRESENTATION IS FINALIZED.

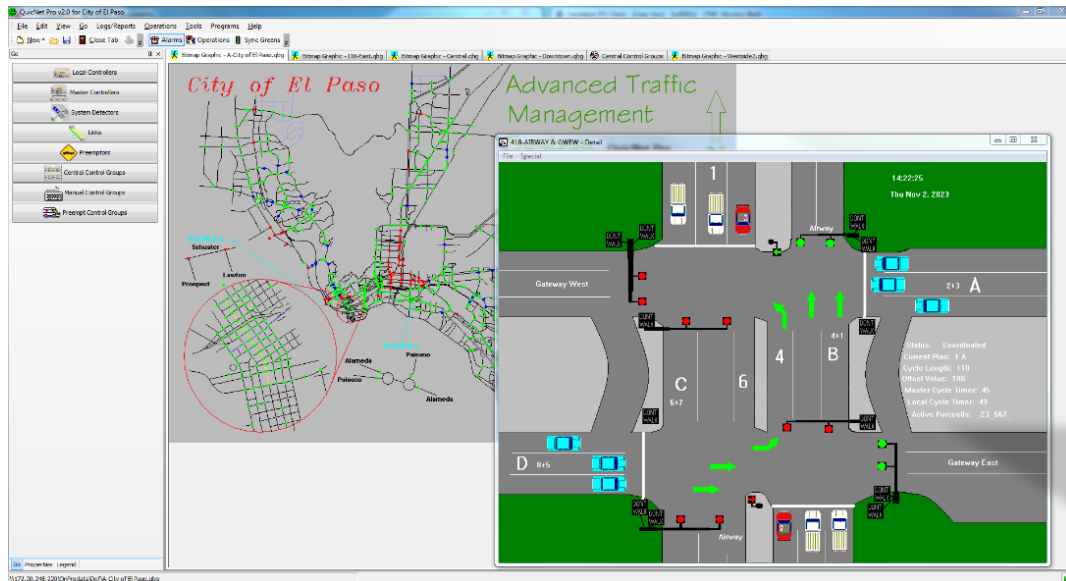
- The new Traffic Signal Control System will be a **real-time multi-tasking operating system** – AI adaptive capabilities within pre-set parameters (the system can detect congestion and automatically implement appropriate incident timing)
- Will have ability to hold **more timing/progression plans** to accommodate future's complex traffic signal needs (presently can hold 12 Incident plans to manage traffic in the event of emergencies – new systems hold up to 48)
- **Pre-defined Flashing Yellow Arrow (FYA)** setting, popular feature that is replacing the traditional left-turn protected & permissive signal phase (Copia/Montana was first one in City)
- System will also be **pre-defined for HAWK System** and **Texas Diamond** interchange

Advanced Traffic Management Systems

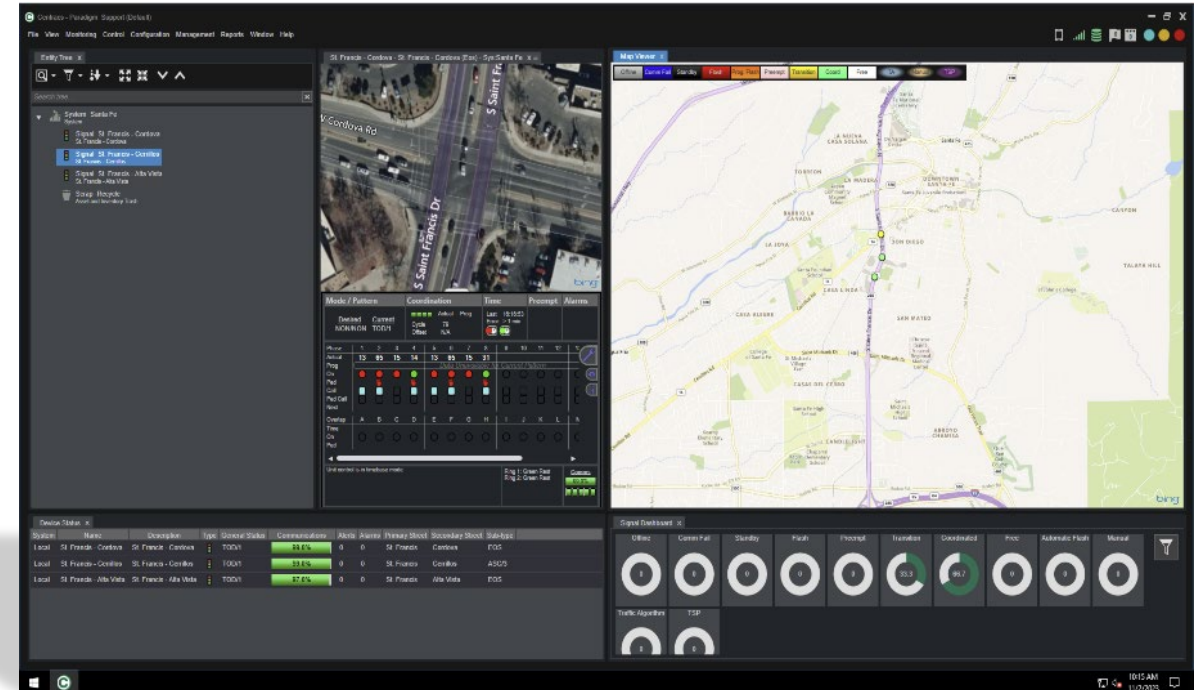
This text box is to remind you about the ASL translator service. Do NOT add any info in this space.

REMOVE THIS BOX ONCE THE PRESENTATION IS FINALIZED.

- New features of New ATMS (Advanced Traffic Management Systems) allow for more intuitive, customizable, and user friendly programming



Production view of current system



Production view of New system

Detection Cameras

- **Detection camera** that have the capability of counting vehicles, pedestrian and bicycles
- **Additional CCTV's** options allowing us to pan, tilt & zoom at designated strategic and select locations



This text box is to remind you about the ASL translator service. Do NOT add any info in this space.

REMOVE THIS BOX ONCE THE PRESENTATION IS FINALIZED.

Connected Vehicle Technology

The new control system will be a real-time multi-tasking operating system

Citizens can download an APP similar to TravelSafe

- Notification of emergency vehicles in same route (pre-emption)
- Notification of school zones along route
- Notifications of pedestrians and cyclists along route - if users also use the app

This text box is to remind you about the ASL translator service. Do NOT add any info in this space.

REMOVE THIS BOX ONCE THE PRESENTATION IS FINALIZED.



Revolutionize Traffic in Your City.

Glance TravelSafely™ is a new smartphone application, developed by Applied Information, that uses cutting-edge technology to make the promise of connected vehicles a reality. Harness the power of connected vehicle technology to make your city smarter, and your residents safer.

Leverage Smart City Technology

The Applied Information Glance Smart City Supervisory System™ connects your intersections, school beacons, and emergency vehicles to form a cohesive, connected system.

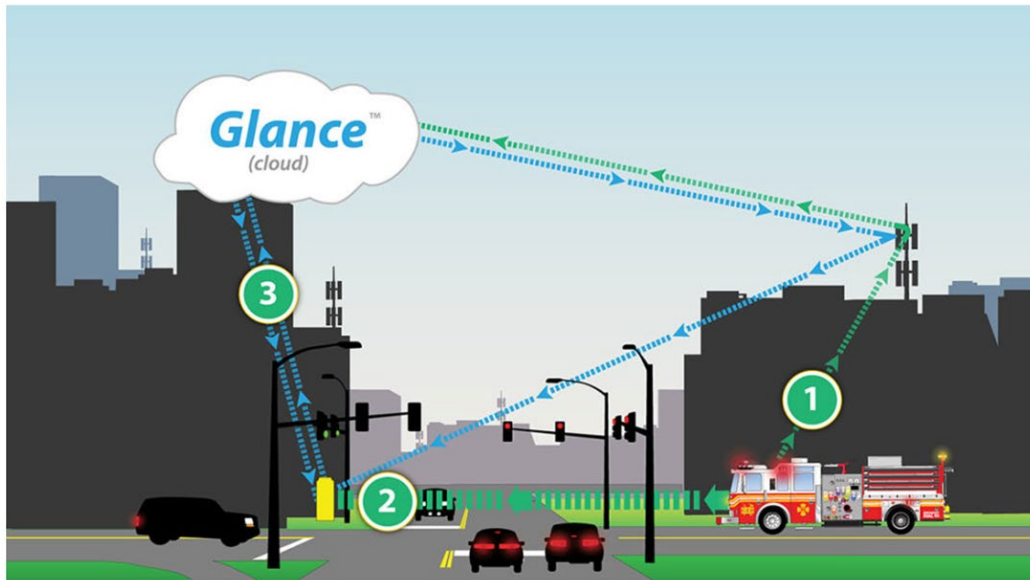
- Traffic Signal**
Glance will connect your intersection cabinets so you can remotely control and monitor traffic lights.
- Preemption Systems**
Our cellular based preemption systems helps emergency responders arrive safe with ground-breaking technology.
- School Beacons**
Remotely update timing plans and diagnose failures with Glance.

Preemption and Priority Systems

- Signal preemption feature will be GIS based and can better coordinate with the emergency vehicles and transit buses from farther distance
- Currently rely on direct line of sight and infrared signals

This text box is to remind you about the ASL translator service. Do NOT add any info in this space.

REMOVE THIS BOX ONCE THE PRESENTATION IS FINALIZED.



1. Notify

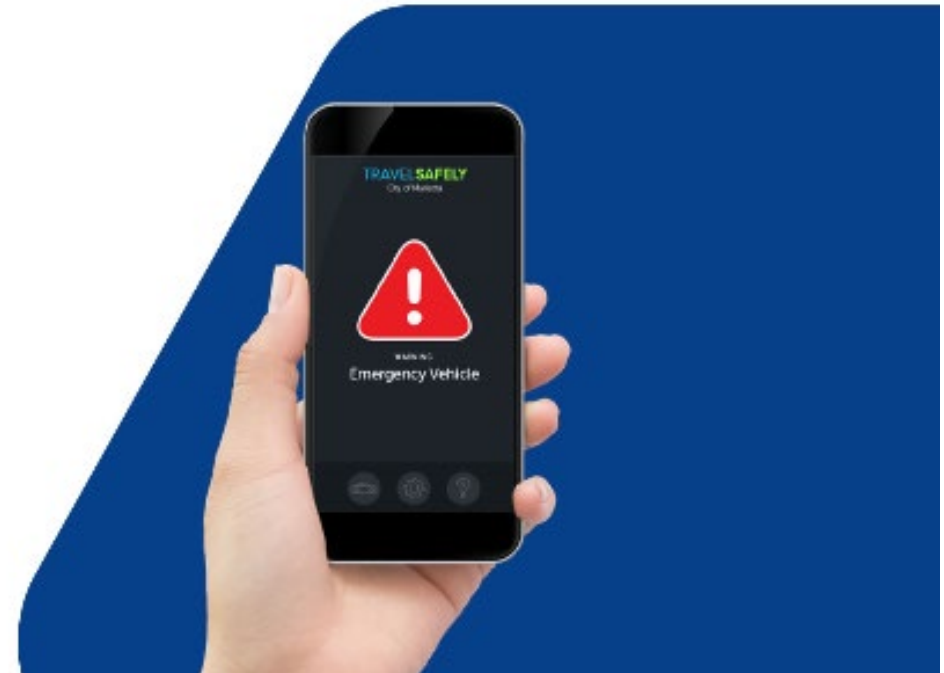
The moment a route starts, the in-vehicle unit uses a cellular signal to alert Glance of the emergency call.

2. Preempt

Glance processes the route and communicates wirelessly with the traffic cabinet to clear traffic ahead of the vehicle's arrival.

3. Adapt

Glance monitors route progress in real time and dynamically adapts preemption requests as the situation changes.

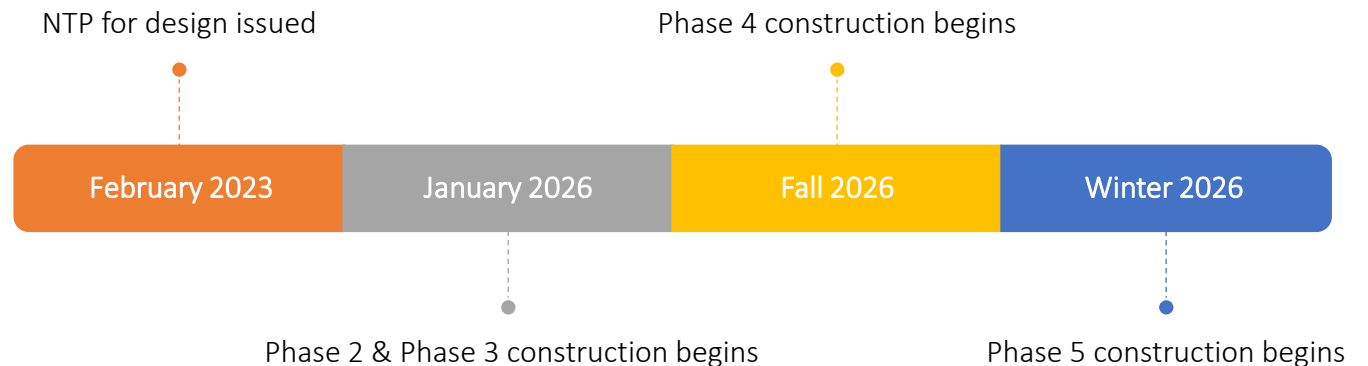


This text box is to remind you about the ASL translator service. Do NOT add any info in this space.

REMOVE THIS BOX ONCE THE PRESENTATION IS FINALIZED.

Project Cost and Timeline

- Project Team includes CID and Streets & Maintenance
- Funding for this multi-year upgrade was through the MPO
- Cost
 - Estimated total Cost is **\$20,143,976** for all phases
- How work will be sequenced over a four year period
 - Implementation Plan Workshop scheduled for February, 2024



This text box is to remind you about the ASL translator service. Do NOT add any info in this space.

REMOVE THIS BOX ONCE THE PRESENTATION IS FINALIZED.

New Program

Solar Streetlight Project

El Paso's First Solar Streetlight Installation

This text box is to remind you about the ASL translator service. Do NOT add any info in this space.

REMOVE THIS BOX ONCE THE PRESENTATION IS FINALIZED.

Marina Rios Park – Along Clark and Cleveland Streets



Less costly than traditional streetlights

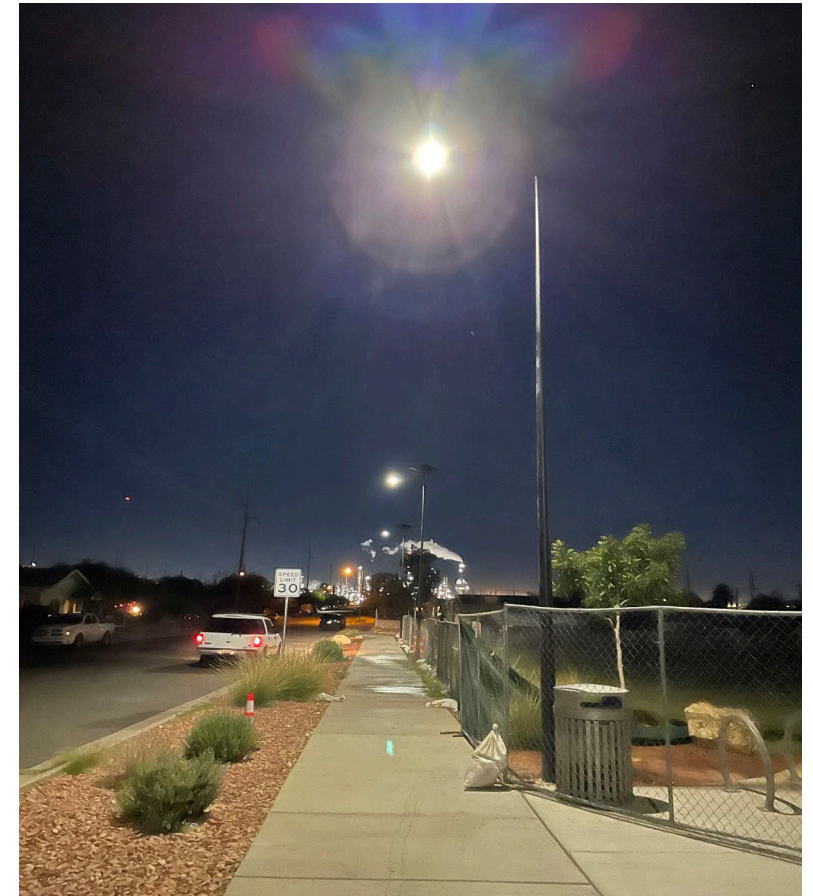
No power connections

Quick installation

Good illumination

Low maintenance

2 minute video of Streets crews installing



VIDEO

MISSION



Deliver exceptional services to support a high quality of life and place for our community

VISION



Develop a vibrant regional economy, safe and beautiful neighborhoods and exceptional recreational, cultural and educational opportunities powered by a high performing government



VALUES

Integrity, **R**espect, **E**xcellence,
Accountability, **P**eople



This text box is to remind you about the ASL translator service. Do NOT add any info in this space.

REMOVE THIS BOX ONCE THE PRESENTATION IS FINALIZED.

District Resurfacing Charts for Residential/Collector Streets

Includes only Active Contract Work that has been programmed

Redistricting happened after some of these streets were approved; required us to crosswalk approximately 100 streets to new districts

District 1 – Residential and Collectors on Active Contract

This text box is to remind you about the ASL translator service. Do NOT add any info in this space.

REMOVE THIS BOX ONCE THE PRESENTATION IS FINALIZED.

Program Year	Location	From	To	Tentative Construction
2023	LOMBARDY AVE	Olmos St	Love Rd	Spring 2024
2023	OLMOS ST	Sunset Dr	Lombardy Ave	Spring 2024
2024	STERLING DR	Country Club Rd	White Oak Dr	Winter 2023/24
2024	STOTTS DR	W Dead End	E Dead End	Winter 2023/24
2024	VISTA VERDE WAY	Love Rd	Vista Grande Cir	Spring 2024
2024	WARRIORS DR	Lindbergh St	Mulberry Ave	Winter 2023/24
2024	WHITE OAK DR	Sterling Dr	Post Oak Dr	Winter 2023/24
2024	LOVE RD	Country Club Rd	Emory Rd	Spring 2024
2024	MCCLINTOCK DR	Doniphan Dr	S Desert Blvd	Spring 2024
2024	MEMORY DR	Country Club Rd	Lindbergh St	Winter 2023/24
2024	POST OAK DR	White Oak Dr	Montoya Dr	Winter 2023/24
2024	SHORTLY LN	Love Rd	Charl Ann St	Winter 2023/24
2025	Chiracahua	Medano	Paiute Way	2025 TBD
2025	Jivaro	Paiute Way	Tuscarora	2025 TBD
2025	Lawndale	Oak Cliff	Mesa Hills	2025 TBD
2025	Medano	N. Desert	Redd	2025 TBD
2025	Paiute Way	Iroquois	Medano	2025 TBD
2025	Southwestern	Redd	Tuscarora	2025 TBD
2025	Totanaca	Medano	Cul de sac	2025 TBD
2025	Thorn	Doniphan	Desert Blvd	2025 TBD

- Redistricting required us to modify District list
- Includes PayGo and Bond projects

District 2 – Residential and Collectors on Active Contract

This text box is to remind you about the ASL translator service. Do NOT add any info in this space.

REMOVE THIS BOX ONCE THE PRESENTATION IS FINALIZED.

Program Year	Location	From	To	Tentative Construction	Program Year	Location	From	To	Tentative Construction
2022	CORTE DEL SOL	Mobile	CDS	Complete	2022	BOONE	Alameda	Rivera	UTILITY HOLD
2022	IDALIA	Copia	Pollard	Complete	2023	ALPS DR	Dyer St	Diana Dr	Winter 2023/24
2022	MOBILE	Copia	CDS	Complete	2024	EDGAR PARK AVE	Magnetic Dr	Gateway South Blvd	Winter 2023/24
2022	POLK	Russell	Pollard	Complete	2024	LOUISIANA ST	Pierce Ave	McKelligon Canyon Rd	Winter 2023/24
2022	SACRAMENTO	Copia	Pollard	Complete	2024	MCKELLIGON CANYON RD	Alabama St	E Dead End	Winter 2023/24
2022	SAVANNAH	Stevens	Partello	Complete	2024	PIERCE AVE	Alabama St	Copia St	Winter 2023/24
2022	TAYLOR	Piedras	Copia	Complete	2024	PIKES PEAK DR	Diana Dr	Hondo Pass Ave	Winter 2023/24
2022	TITANIC	Alabama	Gateway South	Complete	2025	Auburn	Delta	Collingsworth	2025 TBD
2022	TYLER	Elm	Pollard	Complete	2025	Awbrey	Auburn	El Paso	2025 TBD
2022	ATLAS	Alabama	Gateway South	Complete	2025	Barcelona	Flower	Blanco	2025 TBD
2022	VOLCANIC	Alabama	Gateway South	Complete	2025	Blanco	Francis	Cortez	2025 TBD
2022	PORTER	Alabama CDS	Pollard	Complete	2025	Brand	W Dead End	Awbrey	2025 TBD
2023	ATLAS	Alabama	Gateway South	Complete	2025	El Nido	W Dead End	Awbrey	2025 TBD
2023	VOLCANIC	Alabama	Gateway South	Complete	2025	Feliz	Delta	Robert Alva	2025 TBD
2023	MOREHEAD	Nebraska	Alabama	Complete	2025	Geiger	W Dead End	Collingsworth	2025 TBD
2023	NATIONS	Nebraska	Alabama	Complete	2025	Huerta	Delta	Robert Alva	2025 TBD
2023	PORTER	Alabama CDS	Pollard	Complete	2025	Lisbon	Delta	Alameda	2025 TBD
2022	HAMMETT	Frutas	Alameda	Spring 2024	2025	Partello	Frankfort	Porter	2025 TBD
2022	RIVERA	Gateway North	Boone	Spring 2024	2025	Robert Alva	Encino	E Dead ENd	2025 TBD
2022	PERA	Magoffin	Alameda	Spring 2024	2025	El Paso Drive	Alameda	Silverio	2025 TBD
2022	JACKSON	Oklahoma	Raynor	UTILITY HOLD					
2022	MCKINLEY	Oklahoma	Piedras	UTILITY HOLD					

- Redistricting required us to modify District list
- Includes PayGo and Bond projects

District 3 – Residential and Collectors on Active Contract

This text box is to remind you about the ASL translator service. Do NOT add any info in this space.

REMOVE THIS BOX ONCE THE PRESENTATION IS FINALIZED.

Program Year	Location	From	To	Tentative Construction	Program Year	Location	From	To	Tentative Construction
2022	DALE	Dodge	Stewart	Complete	2023	PICO NORTE	Bywood	Limas	In Progress
2022	HICKMAN	Quintana	Edgemere	Complete	2023	OCTUBRE	Bywood	Sam Snead	In Progress
2022	IVANHOE	Quintana	Edgemere	Complete	2023	DOUG FORD	Bywood	Octubre	In Progress
2022	PEACEPIPE	Running Deer	CDS	Complete	2023	BYWOOD	Hector	Lee Trevino	In Progress
2022	PROUD EAGLE	Breckenridge	Quintana	Complete	2023	BELLROSE DR	Edgemere Blvd	Edgemere Blvd	Summer 2024
2022	QUANAH	Quintana	Edgemere	Complete	2023	BROOKHAVEN DR	Bellrose Dr	Cielo Vista Dr	Summer 2024
2022	QUINTANA	Red Sails	Edgemere	Complete	2023	HONEYSUCKLE DR	Bellrose Dr	Cielo Vista Dr	Summer 2024
2022	RED HAWK	Spotted Horse	Proud Eagle	Complete	2023	GLARDON	Green Valley	Green Valley	Summer 2024
2022	RISNER	Quintana	Edgemere	Complete	2023	JOE TURNER	Stewart	E Dead End	Summer 2024
2022	RUNNING DEER	Breckenridge	Edgemere	Complete	2023	NIMITZ	Carolina	N Dead End	Summer 2024
2022	SPOTTED HORSE	War Feather	Edgemere	Complete	2023	PRATT	Nimitz	E Dead End	Winter 2023/24
2022	TENAHA	Hazel Time	George Dieter	Complete	2023	RYAN	Franklin	Franklin	Winter 2023/24
2022	WAR ARROW	Quintana	Edgemere	Complete	2023	STEWART	Franklin	North Loop	Winter 2023/24
2022	WAR FEATHER	Running Deer	Proud Eagle	Complete	2023	ACAPULCO	Hunter	Giles	Winter 2023/24
2022	BOBBY GRAYSON	Adobe	Carolina	Complete	2023	MONTERREY	Hunter	Giles	Winter 2023/24
2022	HACIENDA	Ameca	Santa Barbara	Complete	2024	CAMWOOD DR	Montwood Dr	Zanzibar Dr	Summer 2024
2022	TAMPICO	Hacienda	Acapulco	Complete	2024	OAK DALE DR	W H Burges Dr	Edgemere Blvd	Summer 2024
2022	FRANKLIN DR	Dale	Carolina	Utility Hold	2024	RED SAILS DR	Pebble Hills Blvd	Edgemere Blvd	Summer 2024
2022	ROSE	Franklin	North Loop	Utility Hold	2024	RUNNING DEER DR	Pebble Hills Blvd	Edgemere Blvd	Summer 2024
2022	STILES	Dodge	Carolina	Utility Hold	2024	SUNMOUNT DR	Viscount Blvd	W H Burges Dr	Summer 2024
2023	CAREY	Dale	North Loop	Complete	2024	W H BURGESS DR	Oak Dale Dr	Whitus Dr	Summer 2024
2023	ORGAIN	North Loop	Dale	Complete	2024	WHITUS DR	Shaver Dr	W H Burges Dr	Summer 2024
2023	WARNOCK	North Loop	Dale	Complete	2025	Apache	Navajo	Cheyenne Trail	2025 TBD
2023	WAYNE	North Loop	Dale	Complete	2025	Aztec	Germanimo	Cheyenne Trail	2025 TBD
2023	KACHINA	W Dead End	E Dead End	Complete	2025	Cheyenne Trail	Apache	Aztec	2025 TBD
2023	RED CLOUD	Breckenridge	N Dead End	Complete	2025	Cuba	Phoenix	Hunter	2025 TBD
2023	SMOKE SIGNAL	Kachina	N Dead End	Complete	2025	Del Norte	Phoenix	Yuma	2025 TBD
2023	SOARING EAGLE	Kachina	S Dead End	Complete	2025	Puerto Rico	Phoenix	Yuma	2025 TBD
2023	TEKOA	Smoke Signal	E Dead End	Complete	2025	Rancho Allegre Way	Lilac	Carolina	2025 TBD
2023	WOOSTER	Breckenridge	N Dead End	Complete	2025	Wieland Way	Hughey	Airport	2025 TBD
2023	ADOBE	Hunter	Giles	Complete	2025	Yuma	Hunter	E Dead End	2025 TBD
2023	LIMAS	Sam Snead	Octubre	In Progress	2025	Westmoreland	GTW W	Viscount	2025 TBD

District 4 – Residential and Collectors on Active Contract

This text box is to remind you about the ASL translator service. Do NOT add any info in this space.

REMOVE THIS BOX ONCE THE PRESENTATION IS FINALIZED.

Program Year	Location	From	To	Tentative Construction
2022	COCKRELL	Salem	Dead End	Complete
2022	DEARBORNE	Mackinaw	W Dead End	Complete
2022	KENDALL	Salem	Dearborne	Complete
2022	MCCORMICK	Nolan	W Dead End	Complete
2022	NOLAN	McCormick	Salem	Complete
2022	KENSINGTON	Edinburgh	McCombs	Winter 2023/24
2023	DUNLAP	Deadborne	Triumph	Complete
2023	GARLAND	Salem	W Dead End	Complete
2023	HODGES	Kendall	Norwood	Complete
2023	NORWOOD	Kendall	Warren	Complete
2023	SYCENE	Rushing	W Dead End	Complete
2024	STAHALA DR	Hondo Pass Ave	Major Sprague Ave	Winter 2023/24
2024	SANDERS AVE	Dyer St	McCombs St	Winter 2023/24
2024	COHEN AVE	Gateway South Blvd	Kenworthy St	Winter 2023/24
2024	RUTHERFORD DR	Dyer St	Mount San Berdu Dr	Winter 2023/24
2024	STAHALA DR	Major Sprague Ave	Diana Dr	Winter 2023/24
2024	EDINBURG	McCombs	W Dead End	Summer 2024
2024	HEMMINGWAY	Kensington	McCombs	Summer 2024
2024	MACKINAW	Salem	Dearborne	Summer 2024
2024	WARREN	Salem	Edinburgh	Summer 2024
2025	Blue Wing	Falcon	Pompano	2025 TBD
2025	Bomarc	Manilla	Quail	2025 TBD
2025	Pickerel	Porpoise	Nike	2025 TBD
2025	Quail	Dyer	Railroad	2025 TBD
2025	Snark	Zeus	Pickerel	2025 TBD
2025	Angora Loop	Dyer	Railroad	2025 TBD
2025	Kenworthy	Diana	LP 375	2025 TBD
2025	Diana	GTW N	Dyer	2025 TBD

- Redistricting required us to modify District list
- Includes PayGo and Bond projects

District 5 – Residential and Collectors on Active Contract

This text box is to remind you about the ASL translator service. Do NOT add any info in this space.

REMOVE THIS BOX ONCE THE PRESENTATION IS FINALIZED.

Program Year	Location	From	To	Tentative Construction
2023	Hueco Valley	Hueco Cave	Tierra Rancho	Summer 2024
2023	Ventana	Tierra Este	Hidden Creek	Summer 2024
2025	Charles Foster	Rich Beem	John Hayes St	2025 TBD
2025	Jason Crandall	Hueco Valley	Tierra Tania	2025 TBD
2025	Tim Foster	Charles Foster	Pebble Hills	2025 TBD
2024	66 Streets identified for High Density Mineral Bond Overlay			2025 TBD

District 5 – High Density Mineral Bond Treatment

Location	From	To	Location	From	To	Location	From	To
ALICIA ARZOLA DR	Kari Anne Dr	Flora Alba Dr	SARAH RACHEL CT	S Dead End	Kari Anne Dr	DEER POINT	Bell Point Dr	Scarlet Point Dr
ANGIE BOMBACH AV	Jean Louise St	Joan Francis Dr	SHAWNA LAURINE CT	Flora Alba Dr	Kari Anne Dr	DERBY POINT	Ralph Seitsinger	Bell Point Dr
ANNA MARIE CT	S Dead End	Kari Anne Dr	SHREYA	S Dead End	Montwood Dr	EMERALD POINT	Dead End	Scarlet Point Dr
AQUILLA JANE CT	S Dead End	Kari Anne Dr	SUN FIRE BL	Windermere	Montwood Dr	GARDEN POINT	Rudy Valdez Dr	Scarlet Point Dr
CARLOS BOMBACH AV	Jean Louise St	Joan Francis Dr	TIERRA ALYSSA DR	Tierra Roman	Rich Beem	HONEY POINT	Bell Point Dr	Dead End
DANA MICHELLE ST	Flora Alba Dr	Kari Anne Dr	TIERRA ARLETH CT	Tierra Isela	E Dead End	HUECO CAVE	Hueco Mine Dr	N Dead End
DESERT SUN DR	Flora Alba Dr	Montwood Dr	TIERRA AURORA DR	R C Poe	Tierra Flores	HUECO HILL	Hueco Cave Dr	Terra Rancho St
FLORA ALBA DR	Jean Louise St	Kari Anne Dr	TIERRA FLORES DR	Tierra Isela	Rich Beem	HUECO MINE	Hueco Pit Dr	Hueco Cave Dr
GUYREX DR	W Dead End	Jean Louise St	TIERRA ISELA DR	Tierra Aurora	N Dead End	HUECO PIT	Hueco Sands Dr	Hueco Mine Dr
HUECO END	Hueco Land Ln	E Dead End	TIERRA JEZREL LN	Tierra Isela	N Dead End	HUECO SANDS	Hueco Pit Dr	Hueco Pit Dr
HUECO LAND LN	Hueco Hill Dr	Hueco Hill Dr	TIERRA NUNEZ CT	Tierra Aurora	E Dead End	HUECO VALLEY	Jason Crandall	Hueco Cave Dr
JEAN LOUISE ST	Flora Alba Dr	Carlos Bombach Ave	TIERRA RANCHO ST	Rich Beem	Hueco Valley	IVY POINT	Dead End	Rudy Valdez Dr.
JENNY LAURIE CT	S Dead End	Kari Anne Dr	TIERRA ROMAN DR	S Dead End	Rich Beem	LEAH POINT	Dead End	Cristal Point Way
JOAN FRANCIS	S Dead End	Montwood Dr	TIERRA SOPHIA PL	Tierra Flores	S Dead End	MUDDY POINT	Honey Point Dr	Deer point way
KARI ANNE DR	Jean Louise St	E Dead End	TUSCAN HILLS	Tuscany Hills	Rich Beem	PACIFIC POINT	Scarlet Point Dr	Tim Foster
LOANDA LN	Kari Anne Dr	Robert David Dr	TUSCAN ROSE	Tuscan Sun	W Dead End	PATRIOT POINT	Emerald Point Dr	Tim Foster
MARTIN BAUMAN DR	Robert David Dr	Sun Fire Blvd	TUSCAN SUN	Tuscany Hills	Rich Beem	PERLA POINT	Ralph Seitsinger	Cristal Point Way
NANCY LEE AV	Jean Louise St	Sun Fire Blvd	TUSCANY HILLS	Tuscan Hills	N Dead End	RUDY VALDEZ	Scarlet Point Dr	Tim Foster
NIRVAN	Shreya St	E Dead End	WENDY REED DR	Robert David	Loanda	SCARLET POINT	Honey Point Dr	Bailee Point Dr
PAUL LUCY LANE	Kari Anne Dr	Robert David Dr	BAILEE POINT	Scarlet Point Dr	Pacific Point Dr	SMOKEY POINT	Emerald Point Dr	Tim Foster
RICHARD ALLAN DR	Robert David Dr	Montwood Dr	BELL POINT	Ralph Seitsinger	Derby Point Dr	SPANISH POINT	Emerald Point Dr	Tim Foster
ROBERT DAVID DR	Nancy Lee	Joan Francis Dr	CRISTAL POINT	Scarlet Point Dr	Garden Point Dr	SUNSET POINT	Ralph Seitsinger	Emerald Point

This text box is to remind you about the ASL translator service. Do NOT add any info in this space.

REMOVE THIS BOX ONCE THE PRESENTATION IS FINALIZED.

District 6 – Residential and Collectors on Active Contract

Program Year	Location	From	To	Tentative Construction	Program Year	Location	From	To	Tentative Construction
2022	BRECKENRIDGE	Red Sails	George Dieter	Complete	2024	Judith Resnik	Michael Smith	Ronald McNair	Winter/Spring 2024
2022	BROKEN ARROW	N Dead End	S Dead End	Complete	2024	Marlys Larson	Dick Mayers	McAuliffe	Winter/Spring 2024
2022	GHOST DANCE	Pendleton	Pendleton	Complete	2024	Sal Berroteran	Stone Castle	Urbici Soler	Winter/Spring 2024
2022	PENDLETON	Turner	Edgemere	Complete	2024	Stone Castle	Saul Kleinfeld	Vere Leasure	Winter/Spring 2024
2022	TENAHA	George Dieter	Pendleton	Complete	2024	Village Gate	Iron Gate	E Dead End	Winter/Spring 2024
2023	BLUE MOON	Rising Sun	Dead End	Complete	2025	Bing Crosby	James Grant	Bunky Henry	Winter/Spring 2024
2023	CHICKASAW	Pendleton	Broken Bow	Complete	2025	Bunky Henry	George Dieter	Bogart	Winter/Spring 2024
2023	LONE WOLF	Pendleton	Pendleton	Complete	2025	Chelita	Vista Del Sol	Dick Mayers	Winter/Spring 2024
2023	RISING STAR	Rising Sun	Pendleton	Complete	2025	Double Jay	Lombra Verde	Whirlaway	Winter/Spring 2024
2023	RISING SUN	Tenaha	Edgemere	Complete	2025	Gene Torres	Pellicano	Vista Del Sol	Winter/Spring 2024
2023	STILL WATER	Broken Arrow	Pendleton	Complete	2025	Henry Phipps	Scott Simpson	Vista Del Sol	Winter/Spring 2024
2023	Pratt	Lee Blvd	Saul Kleinfeld	Winter 2023	2025	James Grant	George Dieter	Janet Coles	Winter/Spring 2024
2024	Cayuga	Harkis	Harkis	Winter/Spring 2024	2025	Jennifer	George Dieter	Greg Powers	Winter/Spring 2024
2024	Cree	Harkis	Cayuga	Winter/Spring 2024	2025	Picasso	Zaragoza	Da Vinci	Winter/Spring 2024
2024	Dick Mayers	Leroy Bonse	Marlys Larson	Winter/Spring 2024	2025	Whirlaway	Double Jay	Thunder Trail	Winter/Spring 2024
2024	Firehouse	Frances Scobee	Villa Gate	Winter/Spring 2024	2025	Whistler	Vista Del Sol	Picasso	Winter/Spring 2024
2024	Firehouse	Alex Guerrero	Montwood	Winter/Spring 2024	2025	Winslow Homer	Vista Del Sol	Fred Carter	Winter/Spring 2024
2024	Harris	Pratt	Great Spirit	Winter/Spring 2024					

- Redistricting required us to modify District list
- Includes PayGo and Bond projects

District 7 – Residential and Collectors on Active Contract

This text box is to remind you about the ASL translator service. Do NOT add any info in this space.

REMOVE THIS BOX ONCE THE PRESENTATION IS FINALIZED.

Program Year	Location	From	To	Tentative Construction	Program Year	Location	From	To	Tentative Construction
2022	BILLIE MARIE	Gene Sarazen	Robert Wynn	Complete	2022	CRESTWOOD	Park Haven	Drugan	Winter/Spring 2023/24
2022	BOB MITCHELL	Robert Wynn	George Dieter	Complete	2022	DELL HAVEN	Borett	Pinewood	Winter/Spring 2023/24
2022	BUNKY HENRY	Russ Randall	George Dieter	Complete	2022	DRUGAN	Borrett	Moorehead	Winter/Spring 2023/24
2022	CANA	Juno	Alameda	Complete	2022	FOREST HAVEN	Borett	Pinewood	Winter/Spring 2023/24
2022	CANDELARIA	Roseway	Alameda	Complete	2022	GLEN HAVEN	Borett	Saint Marys	Winter/Spring 2023/24
2022	FRED MARTI	Billie Marie	George Dieter	Complete	2022	LA SENDA	Milton	N Dead End	Utility HOLD
2022	GENE SARAZEN	Robert Wynn	George Dieter	Complete	2022	LYNN HAVEN	Borett	Saint Marys	Winter/Spring 2023/24
2022	HANCOCK	Juno	Presa	Complete	2022	MOORELAND	Park Haven	Reindeer	Winter/Spring 2023/24
2022	JACK CUPIT	Russ Randall	George Dieter	Complete	2022	MORERAS	Naranjos	Naranjos	Winter/Spring 2023/24
2022	JAMES GRANT	Robert Wynn	George Dieter	Complete	2022	NARANJOS	Saint Marys	Reindeer	Winter/Spring 2023/24
2022	JERRY ABBOTT	Trawood	Bob Mitchell	Complete	2022	PARK HAVEN	Borrett	Naranjos CDS	Winter/Spring 2023/24
2022	LEONARDO	Juno	Roseway	Complete	2022	PINEWOOD	Park Haven	Reigndeer	Winter/Spring 2023/24
2022	OLD PUEBLO	Zaragoza	Alameda	Complete	2022	REINDEER	Borrett	Naranjos CDS	Winter/Spring 2023/24
2022	PAUL MORAN	Trawood	Bunky Henry	Complete	2022	ROSE HAVEN	Borett	Pinewood	Winter/Spring 2023/24
2022	PRESA	Roseway	Alameda	Complete	2022	SAINT MARYS	North Loop	Lasso	Winter/Spring 2023/24
2022	RANDY PETRI	Billie Marie	George Dieter	Complete	2022	SAINT MATTHEWS	North Loop	Park Haven	Winter/Spring 2023/24
2022	ROBERT WYNN	Trawood	George Dieter	Complete	2023	BENITO	Candelaria	W Dead End	Summer 2024
2022	RON CERRUDO	Trawood	Bunky Henry	Complete	2023	CANANEA	Alameda	W Dead End	Summer 2024
2022	RUSS RANDALL	Trawood	Bob Mitchell	Complete	2023	CERES	Hancock	Cana	Summer 2024
2022	STEVE SPRAY	James Grant	Robert Wynn	Complete	2023	COLINA	Alameda	N Dead End	Summer 2024
2022	TOM ULOZAS	Robert Wynn	George Dieter	Complete	2023	COLMENERO	Candelaria	W Dead End	Summer 2024
2022	CROW	Septiembre	Janway	Complete	2023	GASPAR	Alameda	Socorro	Summer 2024
2022	OCTUBRE	Crow	Lomaland	Complete	2023	IRMA	Old Pueblo	E Dead End	Summer 2024
2022	SEPTIEMBRE	Mosswood	Montwood	Complete	2023	JUNO	Leonardo	Cana	Summer 2024
2023	PRADO RD	Villanova	Alameda	FALL 2023	2023	LOLITA	Valdievez	S Dead End	Summer 2024
2022	BORRETT	North Loop	Reindeer	In Progress	2023	MORALES	Juno	W Dead End	Summer 2024
2022	CLIFFORD	Niles	Reindeer	Winter/Spring 2023/24	2023	PALLA	Hancock	Cana	Summer 2024

- Utility Coordination in neighborhood around Borrett and Glen Haven

District 7 – Continued

This text box is to remind you about the ASL translator service. Do NOT add any info in this space.

REMOVE THIS BOX ONCE THE PRESENTATION IS FINALIZED.

Program Year	Location	From	To	Tentative Construction
2023	SAINT ANTHONY	Candelaria	Juno	Summer 2024
2023	SAN FERNANDO	Candelaria	Juno	Summer 2024
2023	SAN PEDRO	Gaspar	E Dead End	Summer 2024
2023	SANDOVAL	Candelaria	San Fernando	Summer 2024
2023	VALDIVIEZ	Candelaria	Juno	Summer 2024
2023	FRANKLIN DR	Carolina	North Loop	Winter/Spring 2023/24
2024	Billie Marie	Vista Del Sol	Roberty Wynn	Summer 2024
2023	Robert Wynn	Trawood	Montwood	Summer 2024
2024	Bert Green	Vista Del Sol	Leo Collins	Summer 2024
2024	Bessemer	Vista Del Sol	Leo Collins	Summer 2024
2024	Chito Samaniego	GTW W	Rojas	Summer 2024
2024	Dale Douglas	Bob Mitchell	Montwood	Summer 2024
2024	Dick Ritter	Vista Del Sol	Leo Collins	Summer 2024
2024	Leo Collins	Bessemer	Dale Douglas	Summer 2024
2024	Lou Graham	Vista Del Sol	Leo Collins	Summer 2024
2025	Borunda	Old Country	Teodoso	Summer 2024
2025	Burnham	Lomaland	Lee Trevino	Summer 2024
2025	Greenhaven	New Haven	Roseway	Summer 2024
2025	James Watt	Lee Trevino	Pendale	Summer 2024
2025	Janway	Springwood	Yarbrough	Summer 2024
2025	New Haven	Roseway	Sargent	Summer 2024
2025	Prado	Villanova	Alameda	Summer 2024
2025	Sargent	New Haven	N Dead End	Summer 2024
2025	Smith	New Haven	Wells	Summer 2024
2025	Zenaida	Marlicia	Socorro Rd	Summer 2024
2025	Bordeaux	North Loop	Betel	Spring/Summer 2024
2025	Burgundy	North Loop	Betel	Spring/Summer 2024

- Redistricting required us to modify District list
- Includes PayGo and Bond projects

2024 Progress Update

50 Arterial Streets in the 2022 Community Progress Bond

Tentative Work Schedule

Other ongoing projects may impact this list

Lomaland		
	North Loop to I-10 Pellicano to Montwood	Substantially Complete Substantially Complete
Mesa Hills		
	De Leon to Mesa Acacia Circle to Stanton	In Progress In Progress
Corral		
	PHX to GEW	Winter 2023/24
Yarbrough		
	I-10 to Pebble Hills San Jose to North Loop Loop 375 to Alameda	Winter 2023/24 Winter 2023/24 Winter 2023/24
Geronimo		
	Tampa to I-10 I-10 to Hughey	Winter/Spring 2024 Winter/Spring 2024
Vista Del Sol		
	Sumac to Lomaland Randy Wolf to Bert Green Phil Gibbs to Chelita Jim Thorpe to Winslow Homer George Dieter to Phil Gibbs Winslow Homer to Loop 375	Spring /Summer 2024 - Coordinate with Reconstruction Spring /Summer 2024 - Coordinate with Reconstruction Spring /Summer 2024 - Coordinate with Reconstruction Spring /Summer 2024 - Coordinate with Reconstruction Reconstruction Project Reconstruction Project
Pebble Hills		
	Yarbrough to Lee Trevino Outrigger to Loop 375 Rich Beem to John Hayes Zaragoza to Rich Beem	Spring/Summer 2024 Spring/Summer 2024 Spring/Summer 2024 Spring/Summer 2024
Hondo Pass		
	GTW N to Dyer Diana to Railroad Dyer to Diana	Summer 2024 - Coordinate with Reconstruction Summer 2024 - Coordinate with Reconstruction Reconstruction Project
Schuster		
	Sun Bowl to Prospect Stanton to Brown	Fall 2024 Fall 2024

This text box is to remind you about the ASL translator service. Do NOT add any info in this space.

REMOVE THIS BOX ONCE THE PRESENTATION IS FINALIZED.

This text box is to remind you about the ASL translator service. Do NOT add any info in this space.

REMOVE THIS BOX ONCE THE PRESENTATION IS FINALIZED.

District 8 – Residential and Collectors on Active Contract

Program Year	Location	From	To	Tentative Construction	Program Year	Location	From	To	Tentative Construction
2022	BALTIMORE	Florence	Piedmont	Complete	2023	DARWOOD	Waymore	O Keefe	Spring/Summer 2024
2022	FLORENCE	Gregory	Robinson	Complete	2023	KERN	Mesa	Stanton	Spring/Summer 2024
2022	MESITA	Mesa	Stanton	Complete	2023	MORROW	Stockwell	Galloway	Spring/Summer 2024
2022	STOCKWELL	Moore	Piedmont	Complete	2023	WHITAKER	Stockwell	Galloway	Spring/Summer 2024
2022	MOREHEAD	Nebraska	Alabama	Complete	2023	OCHOA	Wyoming	N Dead End	Spring/Summer 2024
2022	NATIONS	Nebraska	Alabama	Complete	2023	VIRGINIA	Schuster	Missouri	Spring/Summer 2024
2022	PORTER	Alabama CDS	Pollard	Complete	2024	FLORENCE ST	Paisano	San Antonio	Spring/Summer 2024
2022	CAMPBELL	Wellesley	Kerby	In Progress	2024	PALM ST	Montana Ave	Missouri Ave	Spring/Summer 2024
2022	ARIZONA	Ochoa	Saint Vrain	Spring/Summer 2024	2024	RIVER AVE	Los Angeles Dr	Florence St	Spring/Summer 2024
2022	CALIFORNIA	Ochoa	Saint Vrain	Spring/Summer 2024	2024	WALLENBERG DR	Mesa Hills Dr	Sun Crest Dr	Spring/Summer 2024
2022	CENTRAL	Paisano	Piedras	Spring/Summer 2024	2024	WALLENBERG DR	W Dead End	Carousel Dr	Spring/Summer 2024
2022	CLIFF	Ochoa	Saint Vrain	Spring/Summer 2024	2024	ANGE ST	Missouri Ave	Rio Grande Ave	Spring/Summer 2024
2022	CYPRESS	Piedras	Paisano	Spring/Summer 2024	2024	BALTIMORE AVE	Stanton St	Campbell St	Spring/Summer 2024
2022	MAGOFFIN	Eucalyptus	Piedras	Spring/Summer 2024	2024	BLANCHARD AVE	Ange St	Kerby Ave	Spring/Summer 2024
2022	NEVADA	Ochoa	Saint Vrain	Spring/Summer 2024	2024	CARNIVAL DR	Mardi Gras Dr	Confetti Dr	Spring/Summer 2024
2022	RIVER	Ochoa	Saint Vrain	Spring/Summer 2024	2024	CAROUSEL DR	Wallenberg	Pageant Dr	Spring/Summer 2024
2022	SAINT VRAIN	Cliff	Missouri	Spring/Summer 2024	2024	CAROUSEL DR	Rubin Dr	Festival Dr	Spring/Summer 2024
2022	SAN ANTONIO	Piedras	Copia CDS	Spring/Summer 2024	2024	MISSISSIPPI AVE	Kansas St	Florence St	Spring/Summer 2024
2022	WYOMING	Ochoa	Saint Vrain	Spring/Summer 2024	2024	MISSISSIPPI AVE	Rowena Way	Kern Dr/ Baltimore Ave	Spring/Summer 2024
2022	YANDELL	Ochoa	Saint Vrain	Spring/Summer 2024	2024	RIVER AVE	Octavia	Noble	Spring/Summer 2024
2022	PERA	Magoffin	Alameda	Spring/Summer 2024	2024	UNIVERSITY AVE	Kansas St	Ange St	Spring/Summer 2024
2023	HIXSON	Mesita	Alethea Park	Complete	2025	River	Los Angeles	Florence	TBD 2025
2023	NYE	Baltimore	Cincinatti	Complete	2025	River	Octavia	Noble	TBD 2025
2023	OCHOA	Baltimore	Cincinatti	Complete	2025	Cabaret	Mesa Hills	Carousel	TBD 2025
2023	FLORENCE ST	Gregory Ave	Kern Dr	Spring/Summer 2024	2025	De Leon	Marimba	Mesa	TBD 2025
2023	GREGORY AVE	Mesa St	Stanton St	Spring/Summer 2024	2025	Fiesta	Castille	DeLeon	TBD 2025
2023	KERN DR	SunBowl Dr	Mesa St	Spring/Summer 2024	2025	Festival	Cactus Point	Stanton	TBD 2025
2023	MCKELLIGON DR	Stanton St	Baltimore Ave	Spring/Summer 2024	2025	Thorn	Desert Blvd	Redd	TBD 2025
2023	CHAPARRAL	Turney	Mesita	Spring/Summer 2024					

- Redistricting required us to modify District list
- Includes PayGo and Bond projects

Bond Arterial Street Paving Rollout 2024-2025

Approved at Council Jan. 30, 2023

This text box is to remind you about the ASL translator service. Do NOT add any info in this space.

REMOVE THIS BOX ONCE THE PRESENTATION IS FINALIZED.

	Street Name	Resurfacing Limits	CL Mile	PCI	Proposed Treatment
1	SUNLAND PARK	Emory Road to Mesa			
		Emory to I-10	0.66	62.64	Resurfacing
		I-10 to Mesa	1.60	35.88	Resurfacing
2	GEORGE DIETER	Rojas to Montwood	2.88	58.36	Resurfacing
3	LEE TREVINO	Pellicano to Montana	3.44	36.56	Resurfacing
		North Loop to Castner	0.50	48.29	Resurfacing
4	SHADOW MOUNTAIN	Mesa to Pebble Beach	0.25	39.33	Resurfacing
5	RESLER	Desert Pass to White Cliffs	1.75	53.32	Resurfacing
7	GLOBAL REACH	Montana to George Perry	2.30	68.50	Resurfacing
8	YARBROUGH	I-10 to Pebble Hills	2.37	46.91	Resurfacing
		San Jose to North Loop	0.43	34.37	Resurfacing
		Loop 375 to Alameda	1.22	50.09	Resurfacing
9	REDD	Montoya to Southwestern	1.35	50.20	Resurfacing
		Westwind to Swede Johnson	1.20	45.69	Resurfacing
10	PELLICANO	Loop 375 to Barranca	5.71	38.14	Resurfacing
11	MONTWOOD	Loop 375 to Desert Sun	0.68	47.66	Resurfacing
		Viscount to McRae	0.62	49.88	Resurfacing
12	RAILROAD	Farah to Angora Loop	1.20	46.87	Resurfacing
14	PEBBLE HILLS	Yarbrough to Lee Trevino	0.79	35.17	Resurfacing
		Outrigger to Loop 375	2.54	44.85	Resurfacing
		Rich Beem to John Hayes	1.00	43.11	Resurfacing
		Zaragoza to Rich Beem	0.67	11.40	Reconstruction
15	HAWKINS	Gazelle to Montana	1.05	57.19	Resurfacing

	Street Name	Resurfacing Limits	CL Mile	PCI	Proposed Treatment
16	AIRPORT	Airways to 601	1.97	40.63	Resurfacing
		Montana to Airways	0.69	19.66	Reconstruction
17	VISCOUNT	I-10 to Hawkins	1.12	46.95	Resurfacing
18	EXECUTIVE CENTER	San Marcos to Border HWY	0.26	42.50	Resurfacing
		I-10 to Mesa	0.54	49.20	Resurfacing
19	VISTA DEL SOL	Sumac to Lomaland	1.22	56.18	Resurfacing
		Randy Wolf to Bert Green	0.86	44.00	Resurfacing
		Phil Gibbs to Chelita	0.35	43.00	Resurfacing
		Jim Thorpe to Winslow Homer	0.75	59.65	Resurfacing
		George Dieter to Phill Gibbs	0.50	16.85	Reconstruction
		Winslow Homer to Loop 375	0.66	20.38	Reconstruction
20	COTTON	East 7th to Delta	0.34	38.60	Resurfacing
		San Antonio to Texas	0.36	61.85	Resurfacing
21	EDGEMERE	Geronimo to Hawkins	2.16	49.85	Resurfacing
		Saul Kleinfeld to Rich Beem	2.35	58.35	Resurfacing
		Zaragoza to John Hayes	0.76	46.75	Resurfacing
22	HUNTER	Taxco to Gateway West	0.85	59.68	Resurfacing
24	TRAWOOD	Candlewood to Robert Wynn	3.95	44.96	Resurfacing
25	ROJAS	Lomaland to Lee Trevino	0.54	24.00	Resurfacing
		Goodyear to Pendale	0.26	43.00	Resurfacing
		Lee Trevino to Goodyear	0.46	19.00	Reconstruction

Bond Arterial Street Paving Rollout 2024-2025

Approved at Council Jan. 30, 2023

This text box is to remind you about the ASL translator service. Do NOT add any info in this space.

REMOVE THIS BOX ONCE THE PRESENTATION IS FINALIZED.

	Street Name	Resurfacing Limits	CL Mile	PCI	Proposed Treatment
26	SUMAC	Gateway West to Wedgewood	0.86	62.80	Resurfacing
27	GERONIMO	Tampa to Hughey			
		Tampa to I-10	0.67	53.50	Resurfacing
		I-10 to Hughey	0.70	42.28	Resurfacing
28	MESA HILLS	De Leon to Mesa	2.26	40.11	Resurfacing
		Acacia Circle to Stanton	0.98	52.00	Resurfacing
29	WESTWIND	Amposta to Agua Caliente	0.59	40.18	Resurfacing
31	LOMALAND	North Loop to I-10	2.11	30.09	Resurfacing
		Pellicano to Montwood	1.61	39.36	Resurfacing
32	SAUL KLEINFELD	Pebble Hills to Edgemere	0.60	48.90	Resurfacing
33	CAROLINA	North Loop to Yarbrough	1.18	52.50	Resurfacing
		Balsam to Alameda	0.53	60.00	Resurfacing
		Franklin to North Loop	0.48	26.75	Reconstruction
34	SEAN HAGGERTY	US 54 to Arron	1.43	54.10	Resurfacing
		Stonebridge to Dyer	0.20	72.50	Resurfacing
35	TROWBRIDGE	Montana to Northloop	2.17	29.20	Resurfacing
		US-54 to Howze	0.51	66.85	Resurfacing
36	CORRAL	Phoenix to Gateway East	0.28	28.50	Resurfacing
37	TIERRA ESTE	Edgemere to Montana	1.17	47.00	Resurfacing

	Street Name	Resurfacing Limits	CL Mile	PCI	Proposed Treatment
38	SANTE FE	Paisano to Wyoming	0.47	54.00	Resurfacing
39	FRED WILSON	Alabama to US-54	0.94	65.13	Resurfacing
40	ALABAMA	Maple to Mckelligan Canyon	2.62	60.73	Resurfacing
		Fred Wilson to Zion	1.77	40.33	Resurfacing
41	BELVIDERE	Westwind to Via de la Paz	1.45	48.53	Resurfacing
42	RICH BEEM	Edgemere to Ralph Seitsinger	0.94	59.68	Resurfacing
43	RAYNOLDS	Durazno to Hastings	1.09	60.35	Resurfacing
44	DELTA	Virginia to Coles	0.55	40.62	Resurfacing
		Boone to Alameda	2.64	51.27	Resurfacing
		Delta Bridge to San Marcial	0.44	50.75	Resurfacing
45	HONDO PASS	Gateway North to Dyer	0.67	47.20	Resurfacing
		Diana to Railroad	0.93	51.55	Resurfacing
		Dyer to Diana	0.29	11.00	Reconstruction
46	BARTLETT	Mesa to Thorn	1.08	54.22	Resurfacing
47	SUN BOWL	Kern to Mesa	0.25	62.08	Resurfacing
48	SCHUSTER	Sun Bowl to Prospect	0.43	64.75	Resurfacing
		Stanton to Brown	0.82	57.42	Resurfacing
49	KANSAS	Yandell to Schuster	0.56	50.88	Resurfacing
		Paisano to Wyoming	0.59	51.22	Resurfacing
50	HELEN OF TROY	Desert Blvd to Northwestern	0.32	55.50	Resurfacing