



# **COVID-19 Response + Recovery**

***Cross-Functional Team Update***

**3.27.23**

# Table of Contents

---

- 1. Overview (Tommy Gonzalez)**
  - 2. City Attorney Overview (Karla Nieman)**
    - a) State Disaster Declaration**
    - b) Emergency Ordinances**
    - c) Greg Abbott, in his official capacity  
as Governor of Texas v. City of El Paso  
& Statewide Mask Mandate Litigation**
    - d) Additional Updates**
  - 3. Team Lead Report:**
    - a) Health Focus (Hector Ocaranza, M.D.)**
      - i-COVID-19**
      - ii-Influenza**
  - 4. City Manager Wrap-up (Tommy Gonzalez)**
-



# 1. Overview

Tommy Gonzalez



# 2. City Attorney Overview

March 27, 2023

Overview

City Attorney Overview

1. State Disaster Declaration
2. Emergency Ordinances
3. Greg Abbott, in his official capacity as Governor of Texas v. City of El Paso & Statewide Mask Mandate Litigation
4. Additional Updates

4

Karla Nieman

# State Disaster Declaration



\*Anticipate Governor Abbott will renew his Disaster Declaration April 15, 2023.



# Emergency Ordinances

Ordinance	Adoption Date	Most Recent Re-enactment	Expires
<b>Disaster Declaration</b> Ord. No. 019035	3/17/2020	2/27/2023	3/29/2023
<b>Emergency Measures</b> Ord. No. 019036	3/17/2020	2/27/2023	3/29/2023
<b>Public Right of Way</b> Ord. No. 019241	10/11/2021	2/27/2023	3/29/2023


# Statewide Mask Mandate Litigation Texas Supreme Court Oral Arguments

- On March 1, 2023, the 8th Court of Appeals issued its opinion affirming the trial court's ruling
- The court ruled that Governor Abbott acted outside his scope of authority claiming that GA-38 superseded any local order in response to COVID-19
- The Attorney General has until April 15, 2023 to file a petition for review from the Texas Supreme Court



# Greg Abbott, in his official capacity as Governor of Texas v. City of El Paso & Statewide Mask Mandate Litigation

## Texas Courts of Appeal

Three concentric semi-circles on the left side of the table. The outermost semi-circle is orange, the middle one is blue, and the innermost one is orange.

4 <sup>th</sup> Tex. App.	<ul style="list-style-type: none"><li>• Abbott v. City of San Antonio</li></ul>
5 <sup>th</sup> Tex. App.	<ul style="list-style-type: none"><li>• Abbott v. Clay Jenkins</li></ul>
8 <sup>th</sup> Tex. App.	<ul style="list-style-type: none"><li>• Abbott v. City of El Paso</li></ul>



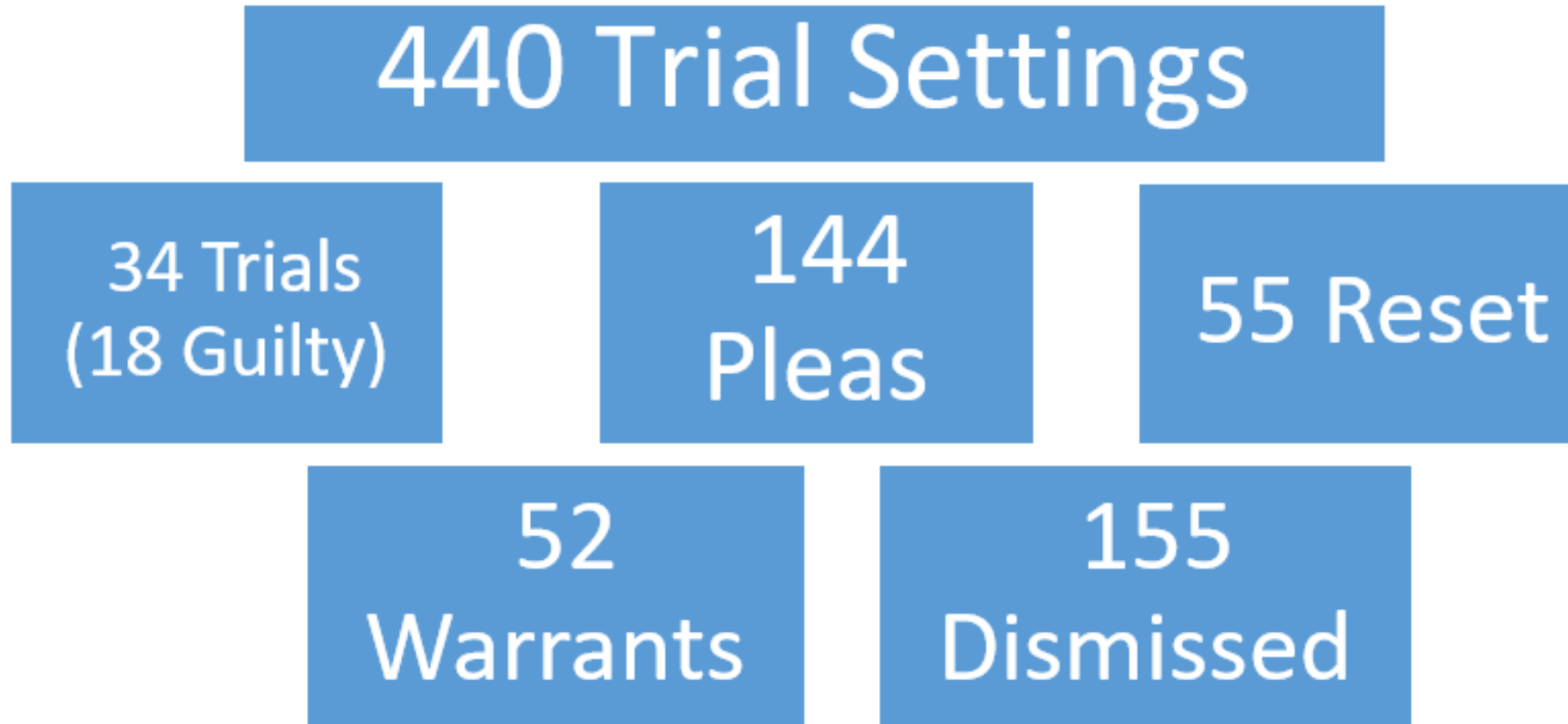
# Additional Updates- Legislative Session 88(R)

- The Texas legislature has numerous bills pending related to the pandemic
- The bills are currently in the legislative process



# Additional Updates –COVID-19 Prosecution Update

**Trial Settings on COVID-19 Citations through 3/21/2023 in all 5 Municipal Courts**





# 3. Team Lead Report



# a. Health Focus

i- COVID-19 Update

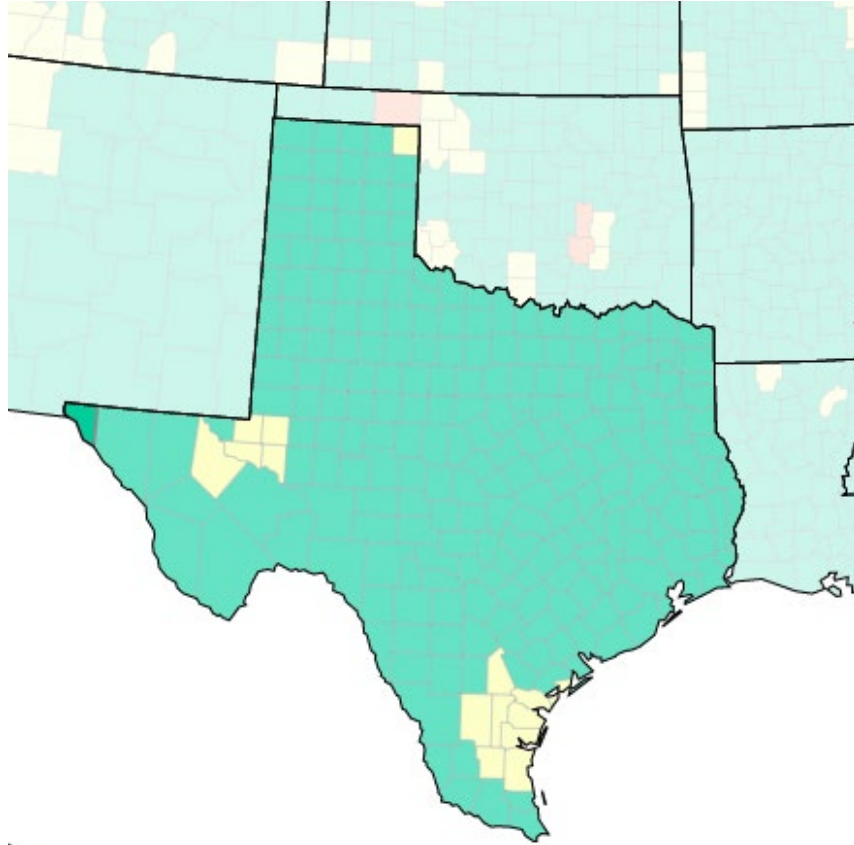
ii- Influenza Update

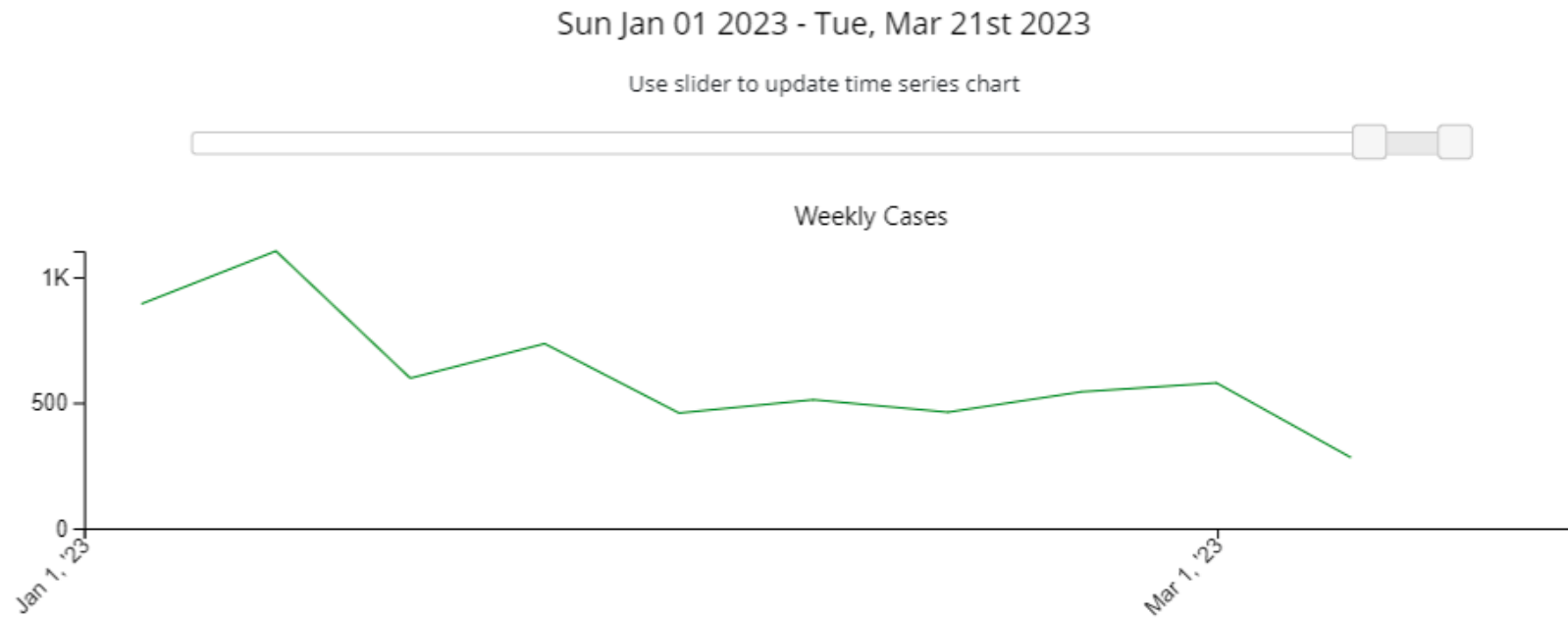
Hector I. Ocaranza, M.D.

# COVID-19 Update

- Public Health Emergency coming to an end
- COVID activity very low and continues to decline
- Hospitalizations are also low
- Need to address risk of each individual regarding COVID
- Shift focus on maintaining health
- City clinics continue to offering COVID vaccines at no cost







## Hospitalizations in El Paso County, Texas

Data through Mon Mar 20 2023

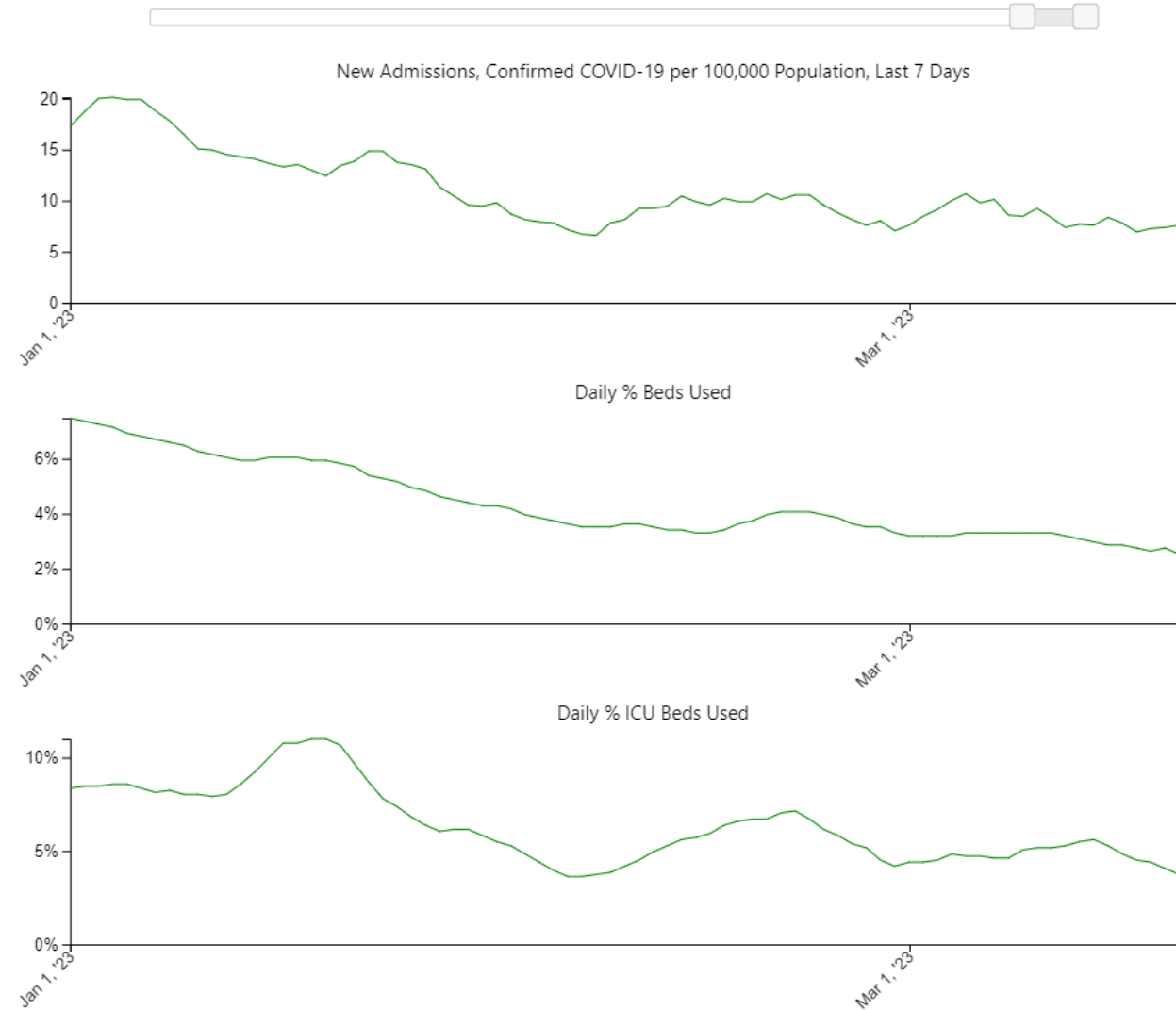
<b>New admissions of confirmed COVID-19 among county residents (estimated)</b>	58
New admissions of confirmed COVID-19 per 100,000 population	6.9
% Change in new admissions of confirmed COVID-19 from previous 7 days	-1.70

<b>% Staffed inpatient beds in use by patients with confirmed COVID-19</b>	2.3
Absolute change, % staffed inpatient beds in use by patients with confirmed COVID-19 from previous 7 days	-0.4

<b>% Staffed ICU beds in use by patients with confirmed COVID-19</b>	3.4
Absolute change, % staffed ICU beds in use by patients with confirmed COVID-19 from previous 7 days	-1.6

Sun Jan 01 2023 - Tue, Mar 21st 2023

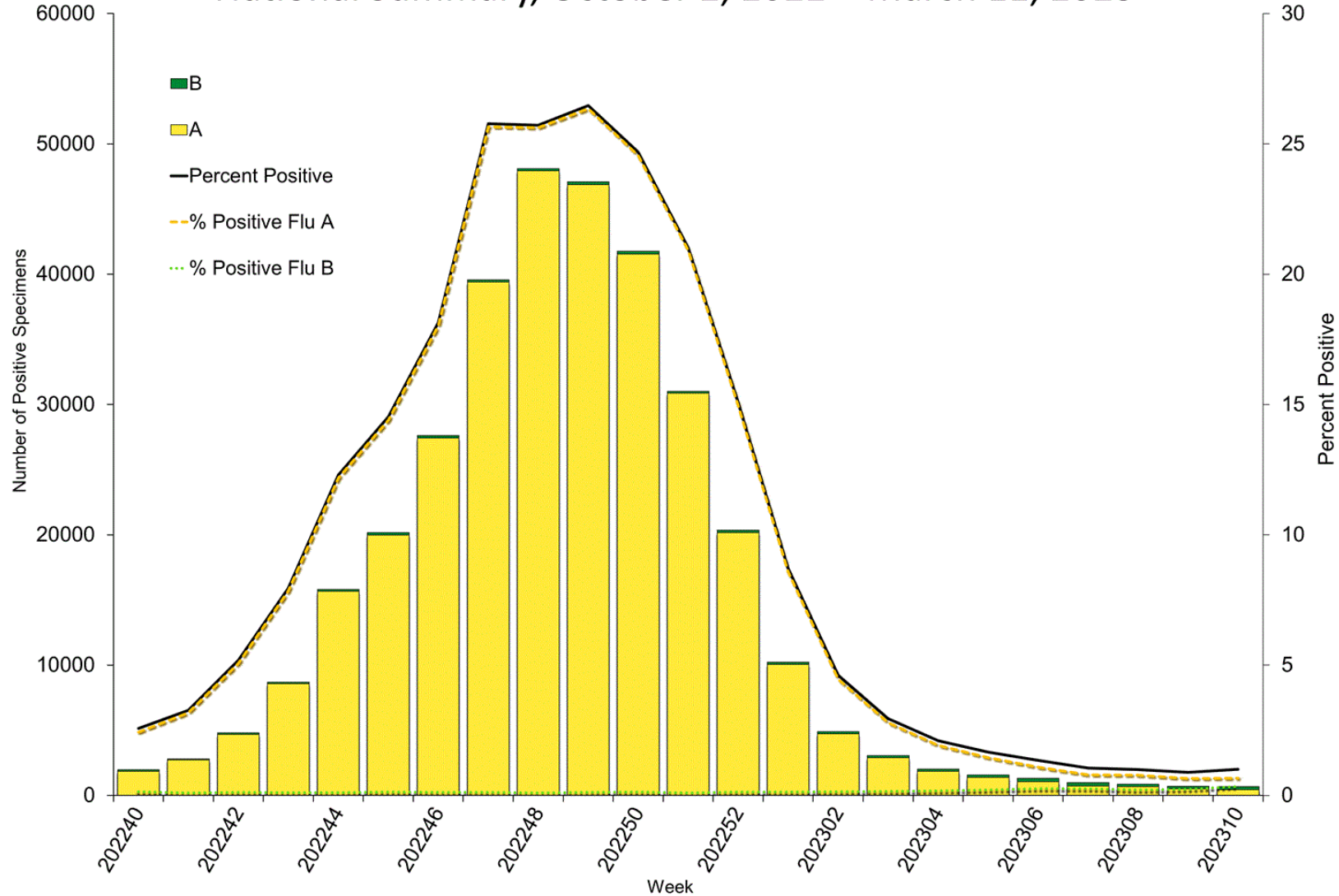
Use slider to update time series chart



# Influenza

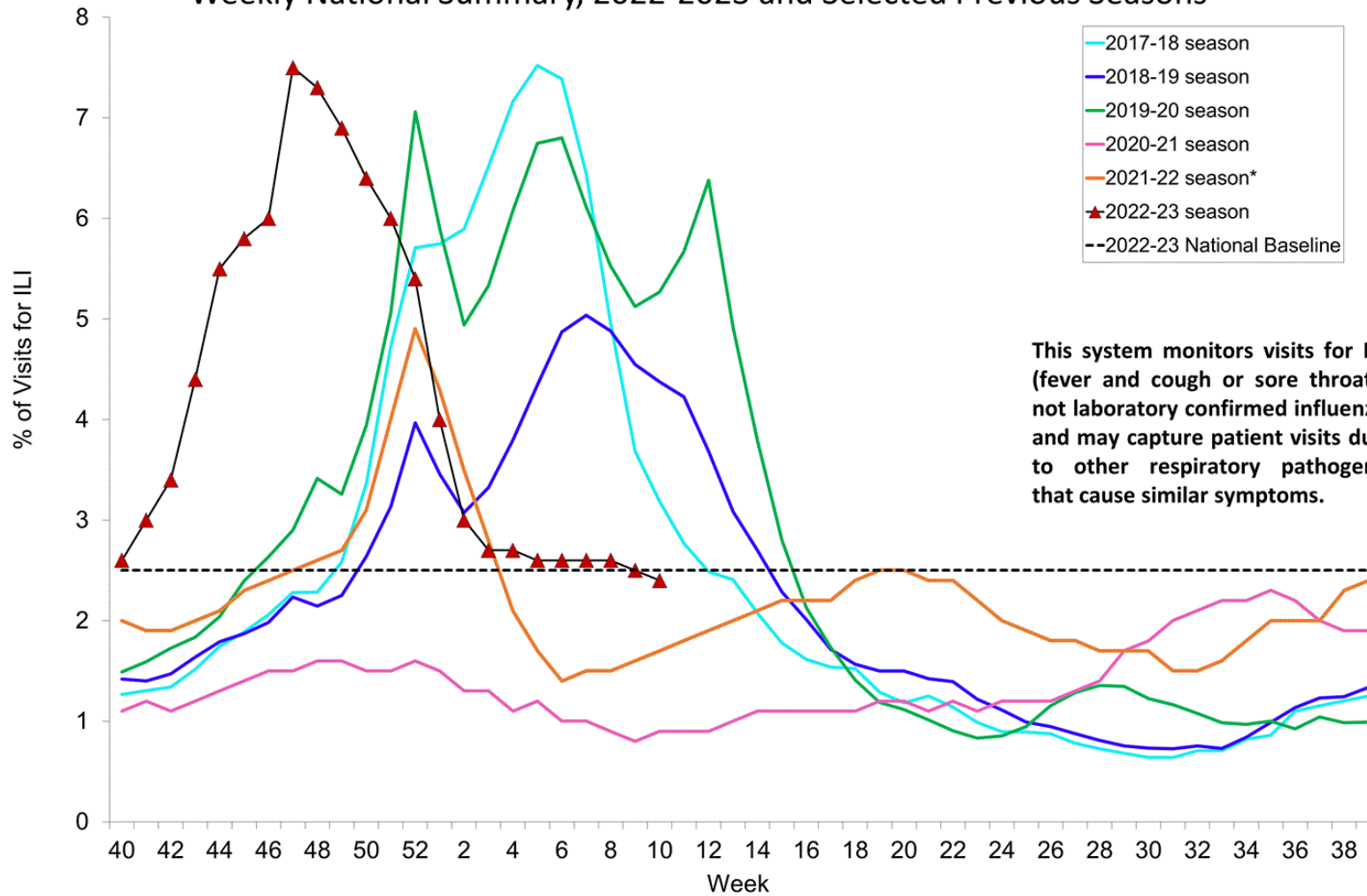
- Influenza activity very low
- Influenza season coming to an end
- Our community will still see few Influenza cases
- Young children and infants mostly affected
- Highest risk is for infants and those with weak immune system and elderly

## Influenza Positive Tests Reported to CDC by U.S. Clinical Laboratories, National Summary, October 2, 2022 – March 11, 2023

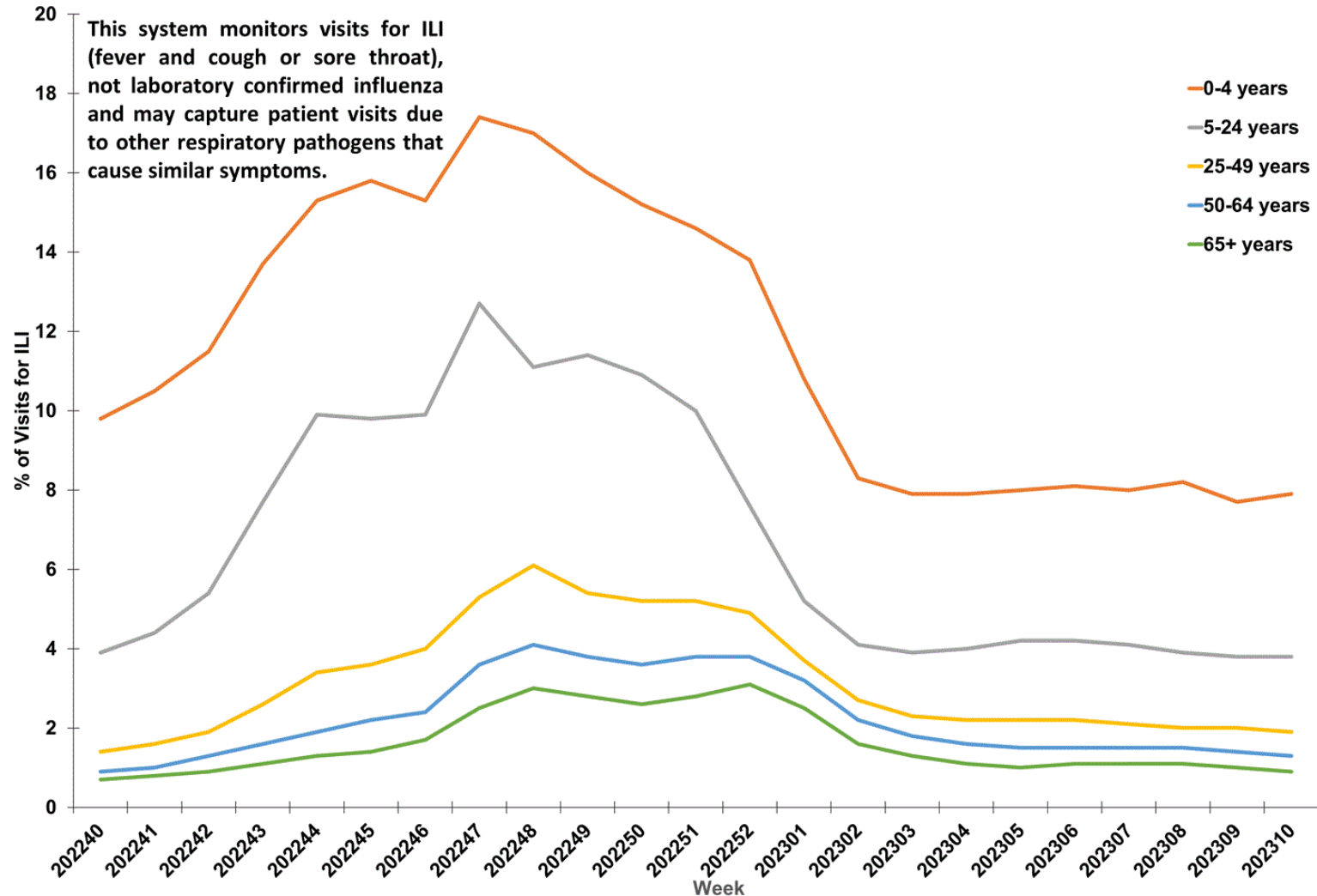




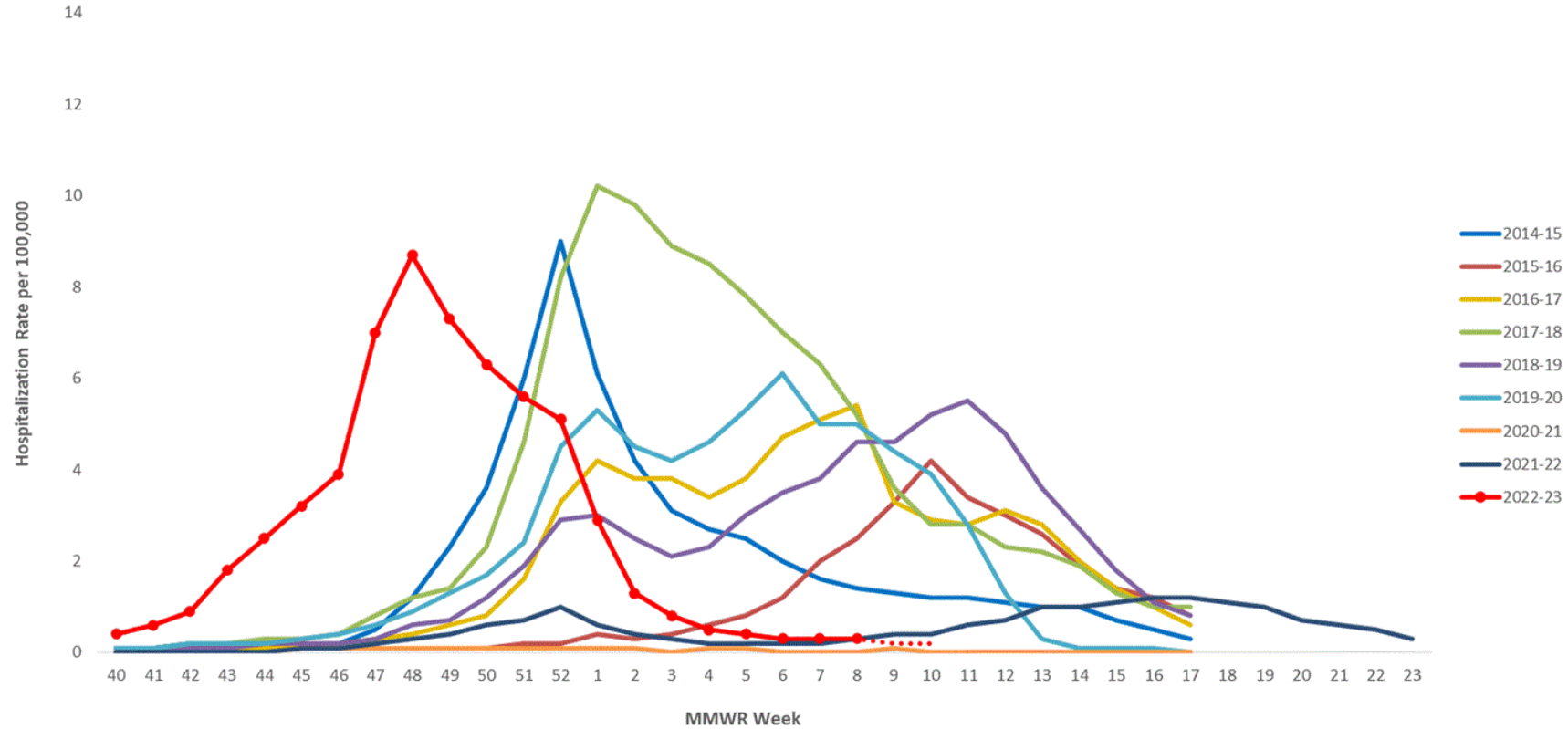
Percentage of Outpatient Visits for Respiratory Illness Reported By  
The U.S. Outpatient Influenza-like Illness Surveillance Network (ILINet),  
Weekly National Summary, 2022-2023 and Selected Previous Seasons



**Percentage of Outpatient Visits for Respiratory Illness by Age Group  
Reported by the U.S. Outpatient Influenza-like Illness Surveillance Network (ILINet),  
Weekly National Summary, October 2, 2022-March 11, 2023**



Weekly Rate of Laboratory-Confirmed Influenza Hospitalizations  
among cases of all ages, 2014-15 to 2022-23, MMWR Week 10



\*\*In this figure, weekly rates for all seasons prior to the 2022-23 season reflect end-of-season rates. For the 2022-23 season, rates for recent hospital admissions are subject to reporting delays and are shown as a dashed line for the current season. As hospitalization data are received each week, prior case counts and rates are updated accordingly.

# 4. City Manager Wrap-up

Tommy Gonzalez



**Thank you!**