



# International Bridges Department

## Management Update

June 21, 2022



# International Bridges Transformation

- Department restructured
- Advanced statistical analysis
- Reimbursable services agreement with U.S. CBP to stabilize border wait-times
- Established Bridges Steering Committee instrumental for binational collaboration
- Secured \$32M for Intelligent Transportation Systems
- Adoption of 5-yr Capital Improvement Program
- Regional unified preparedness and response to external shocks
- Pursuing several federal funding opportunities



**Making data driven decisions guided by our strategic plan**



**Objective of improving our competitive advantage among other ports of entry**



**Boost economic development opportunities for our region**



EL PASO  
INTERNATIONAL BRIDGES



# El Paso International Bridge System

- ❖ 2021 Trade through the City of El Paso totaled \$84.8 billion
  - Ranks **2<sup>nd</sup> in personal vehicles** crossings (near 8.9 million)
  - Ranks **2<sup>nd</sup> in pedestrian** crossings (over 4.0 million)
  - Ranks **3<sup>rd</sup> in cargo** crossings (almost 850,000)

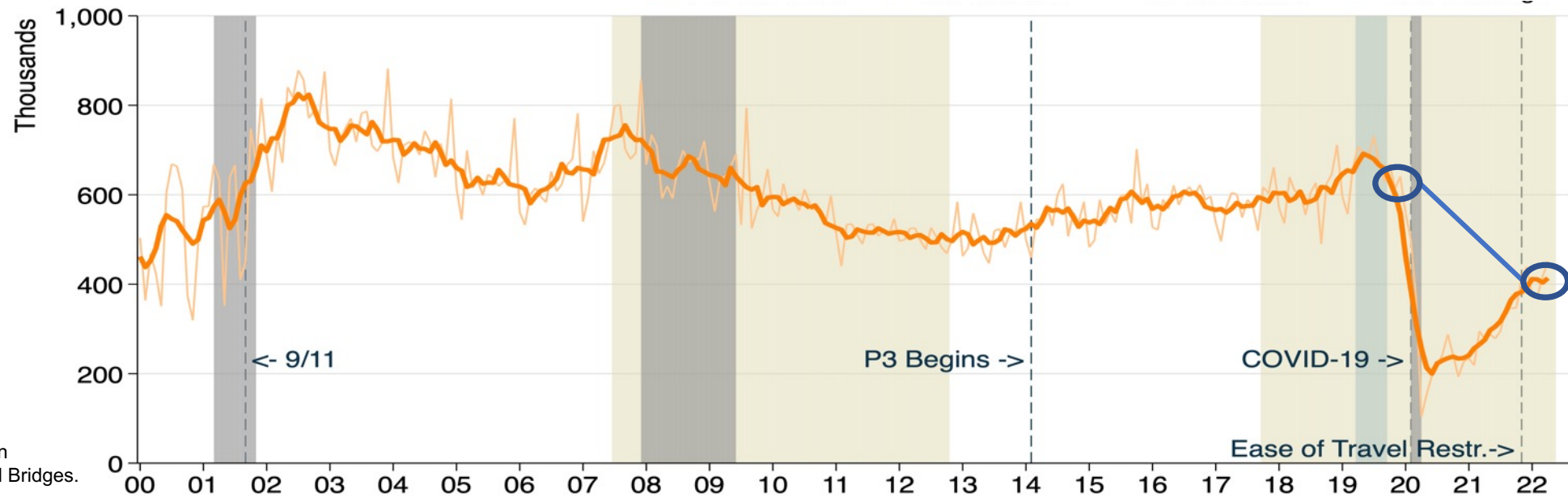


# COVID-19 Impact on Bridge Crossings

## Personal Vehicle Crossings

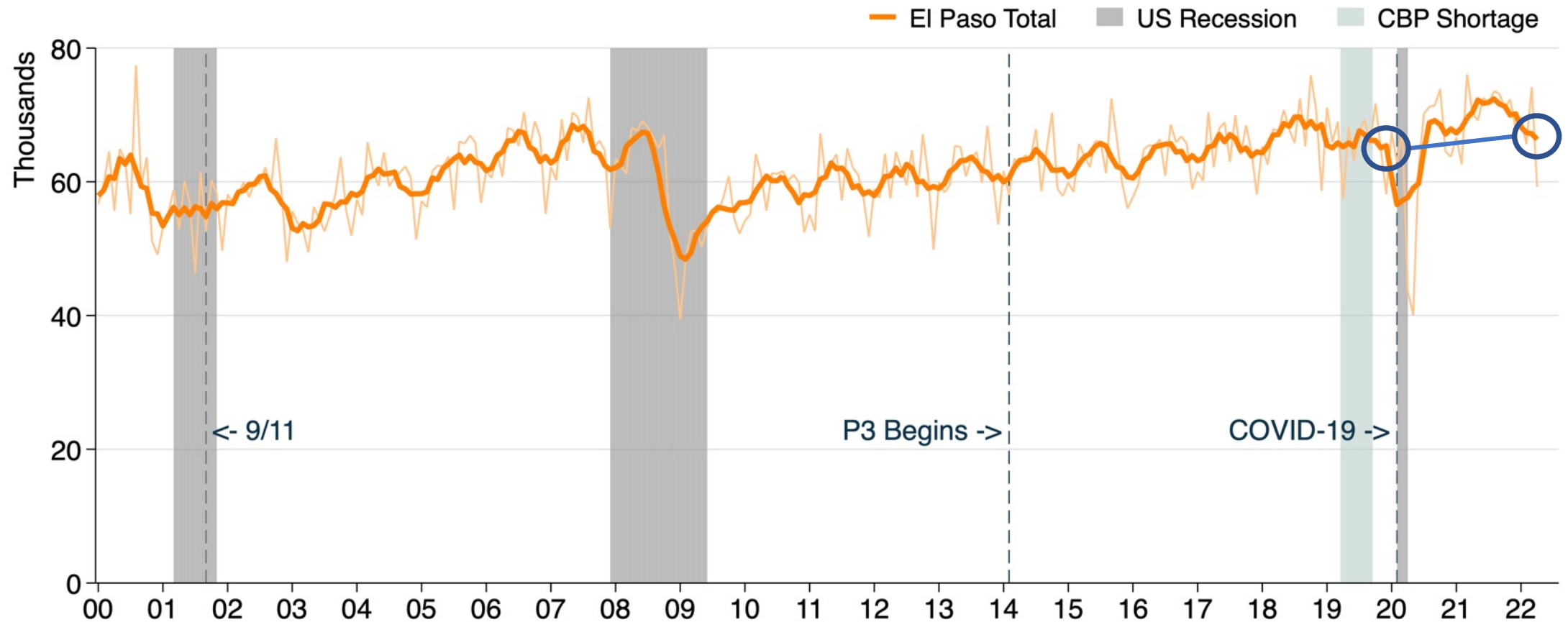


## Pedestrian Crossings



# COVID-19 Impact on Bridge Crossings

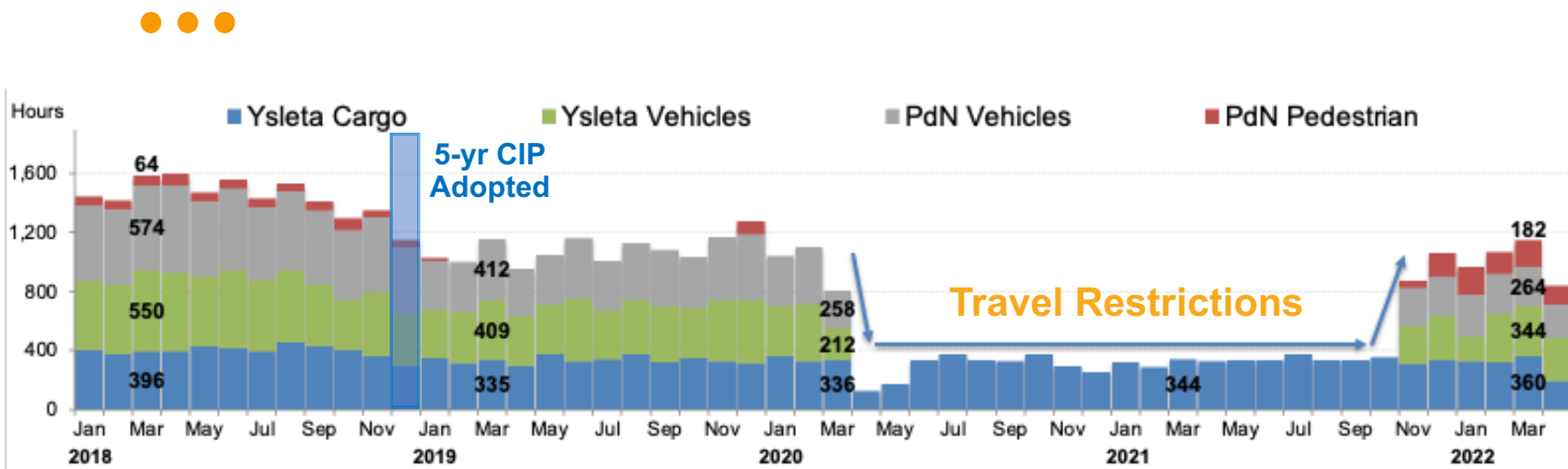
## Cargo Crossings



Source: U.S. Customs and Border Protection compiled by the City of El Paso International Bridges. Last observation: April, 2022.



# Investing in our regional bridge system



## Strategic Plan

Enhance cross-border  
mobility experience for  
bridge users



## CBP Reimbursable Services Agreement

\$12.5M invested  
over 100k CBP  
overtime hours



## 5-yr Capital Improvement Program

Investing more than \$42M of  
improvements and new technology  
enhancements over the next 5 years

# Bridges Steering Committee

## United States

- Border Industrial Association
- Borderplex Alliance
- Camino Real Regional Mobility Authority
- City of El Paso (IBD, CID, SAM, PD, PI)
- County of El Paso
- El Paso Community Foundation
- Metropolitan Planning Organization
- New Mexico Border Authority
- Southwest Maquiladora Association
- Texas A&M Transportation Institute
- Texas Department of Public Safety
- Texas Department of Transportation El Paso
- U.S. Consulate
- U.S. Customs and Border Protection
- U.S. Department of Transportation
- U.S. General Services Administration
- UTEP – Civil Engineering Department

## México

- Asociación de Transportistas
- Fideicomiso de Puentes Fronterizos de Chihuahua
- Gobierno del Estado de Chihuahua
- IMIP (Jrz. Planning Office)
- INDEX (Maquiladora Association)
- Municipio de Juárez
- Secretaria de Relaciones Exteriores
- Servicio de Administración Tributaria

## Interagency Binational Collaboration







# Binational Collaboration

(Fideicomiso de Puentes Fronterizos)

- ❖ Real-time crossings data and information sharing
- ❖ Binational Intelligent Transportation Systems
- ❖ Improved payment systems
- ❖ Explore port of entry expansion and modernization opportunities
- ❖ Implement solutions to help bridge crossers and improve customer service



**EL PASO**  
INTERNATIONAL BRIDGES

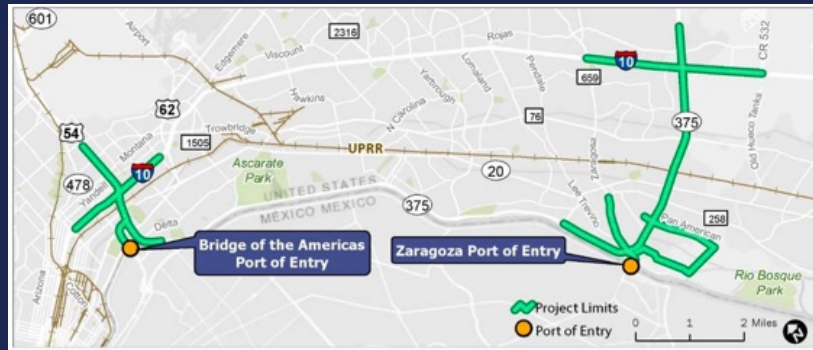


FIDEICOMISO  
**DE PUENTES  
FRONTERIZOS  
DE CHIHUAHUA**



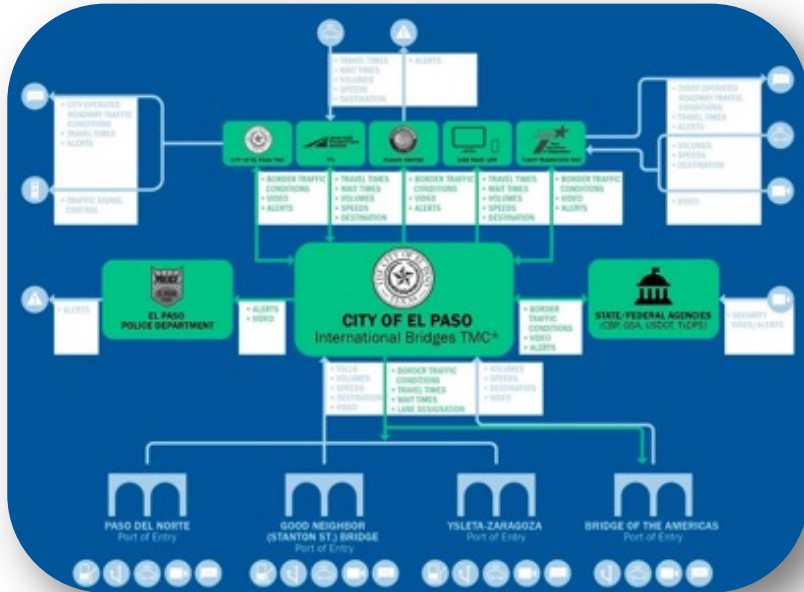


# Intelligent Transportation Systems (Rider 44)



- ❖ Bridge of the Americas and Ysleta POE
- ❖ \$32M project: \$14M on-system | \$18M off-system
  - On-system 100% design completed
  - Off-system scope and fee in-progress (pending AFA)
  - Concept of Operations developed (interagency coordination)
  - Dynamic message signs, improved security measures, wait-time collection devices, traffic detection devices
  - In close coordination with BSC stakeholders including TxDOT, CBP, TTI, EPPD and others

# Benefits of ITS



EXTENDED HRS  
COMMERCIAL  
OPERATIONS

Improved customer service



Access to real-time traffic conditions via security cameras

CRASH AHEAD  
WAIT TIME:  
30 MIN

Updated wait-time information



# E-Fast Pass

- Dedicated travel lanes to reduce transaction times
- Discounted rate (\$0.50 less)
- Increasing access to services
- Contactless payment method

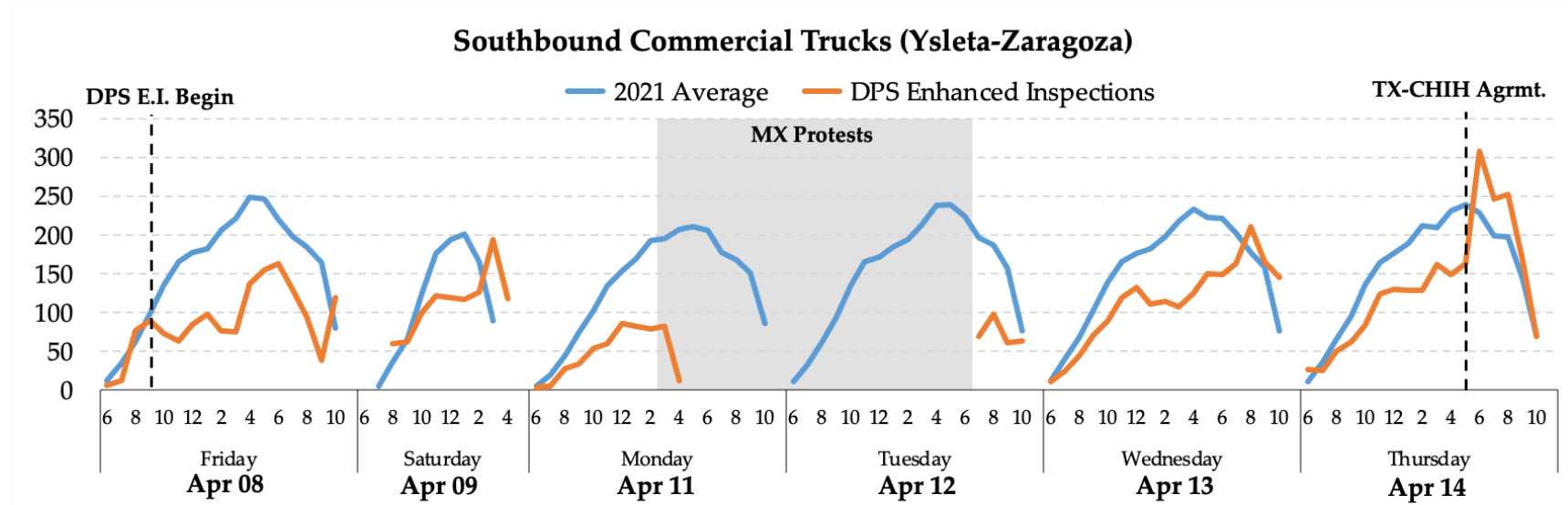


# PDNuno.com

- Crossings data
- Travel alerts
- Live traffic camera feeds
- Border wait-time information
- Frequently asked questions
- Crossborder survey results



# Regional response to DPS enhanced inspections



## Bridges Steering Committee

POE hours of operation  
adjustments and real-time  
coordination



## State Delegation

Strong support and  
representation in Austin



## Border Trade Advisory Committee

Representing ELP/JRZ  
border region in Texas



# Federal Funding Strategies

## Stanton St. Bridge and Corridor

Expansion and modernization feasibility study

## Ysleta Construction

Pedestrian safety improvements and amenities

## El Paso International Bridge System

Needs assessment of all regional POEs



# Collaboration with Texas' 16<sup>th</sup> Congressional District



## White Paper

- ❖ Overview of international bridge system
- ❖ CBP reimbursable services agreement
- ❖ Department transformation
- ❖ Bridges Steering Committee
- ❖ Capital Improvement Program
- ❖ Intelligent Transportation Systems
- ❖ US-MX Border Transportation Master Plan
- ❖ Priority border projects
- ❖ Long term investments
- ❖ Challenges



LAST REVISED: MARCH 22, 2022



CITY OF EL PASO

INTERNATIONAL BRIDGE SYSTEM IMPROVEMENT EFFORTS

SUMMARY REPORT





- ❖ BTMP efforts began December 2018, adopted by Texas Transportation Commission March 2021
- ❖ Effort led by Border Trade Advisory Committee (BTAC) and Texas Department of Transportation
- ❖ City of El Paso, Bridges Steering Committee and all regional stakeholders involved throughout process
- ❖ BTMP identified policy, program and project recommendations
- ❖ **Regional needs: 292 identified projects, \$11.6B**
  - **661 border wide total projects, \$37.4B total cost**



# New x-ray inspection machines at all international bridges

## ❖ City of El Paso concerns include:

- Impact to City of El Paso properties and lifecycle of bridges
- Traffic control plans during and after construction
- Phases and timelines remain unclear
- Additional bottlenecking/congestion at POEs
- Potential negative impact on border wait-times
- Increased pressure on existing CBP staffing shortages
- Long-term health impacts to bridge crossers unknown
- No public outreach or education campaign thus far

- ✓ Objective is to x-ray practically all POVs before primary inspection
- ✓ Project underway at all land border crossings along US-MX border
- ✓ GSA is lead agency



EL PASO  
INTERNATIONAL BRIDGES

## Ysleta/Zaragoza POE







# Mission

Deliver exceptional services to support a high quality of life and place for our community



# Values

Integrity, **R**espect, **E**xcellence,  
**A**ccountability, **P**eople



# Vision

Develop a vibrant regional economy, safe and beautiful neighborhoods and exceptional recreational, cultural and educational opportunities powered by a high performing government