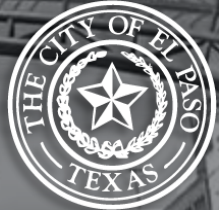




Community Progress Bond: Public Engagement Results

May 10, 2022



16 NEW PROPOSED STRATEGIC OBJECTIVES

Vibrant Regional
Economy

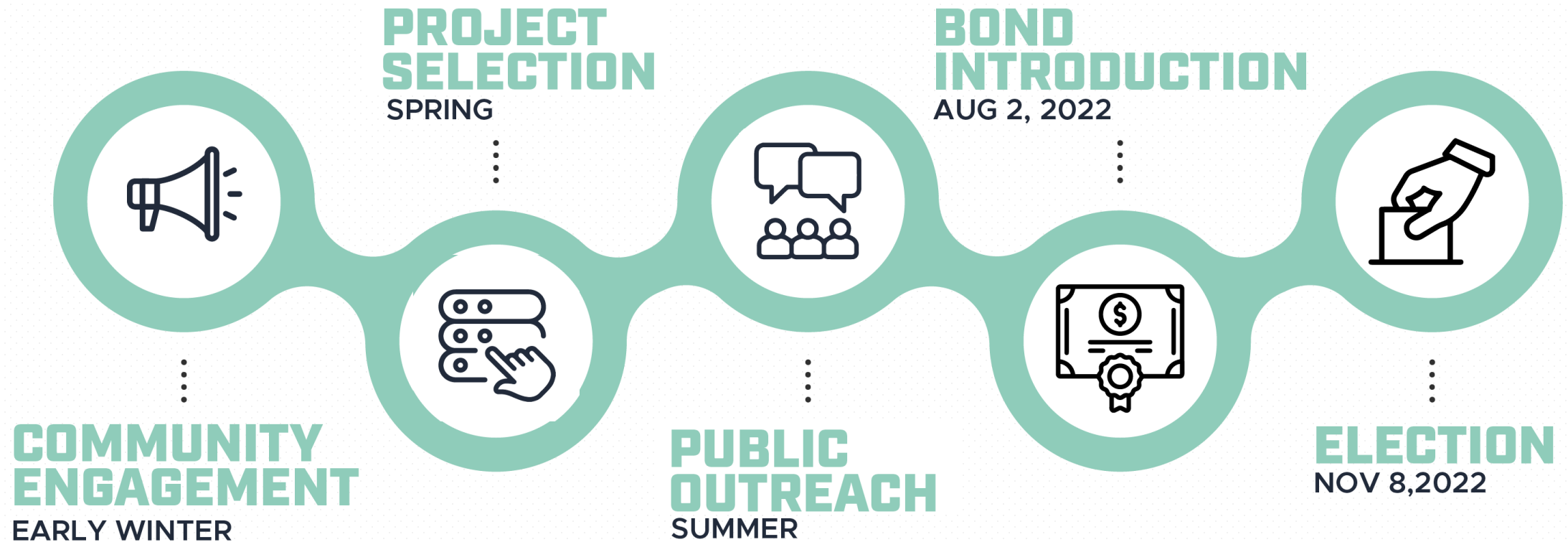
High Performing
Government

Exceptional Recreational
Cultural + Educational
Opportunities

Safe + Beautiful
Neighborhoods

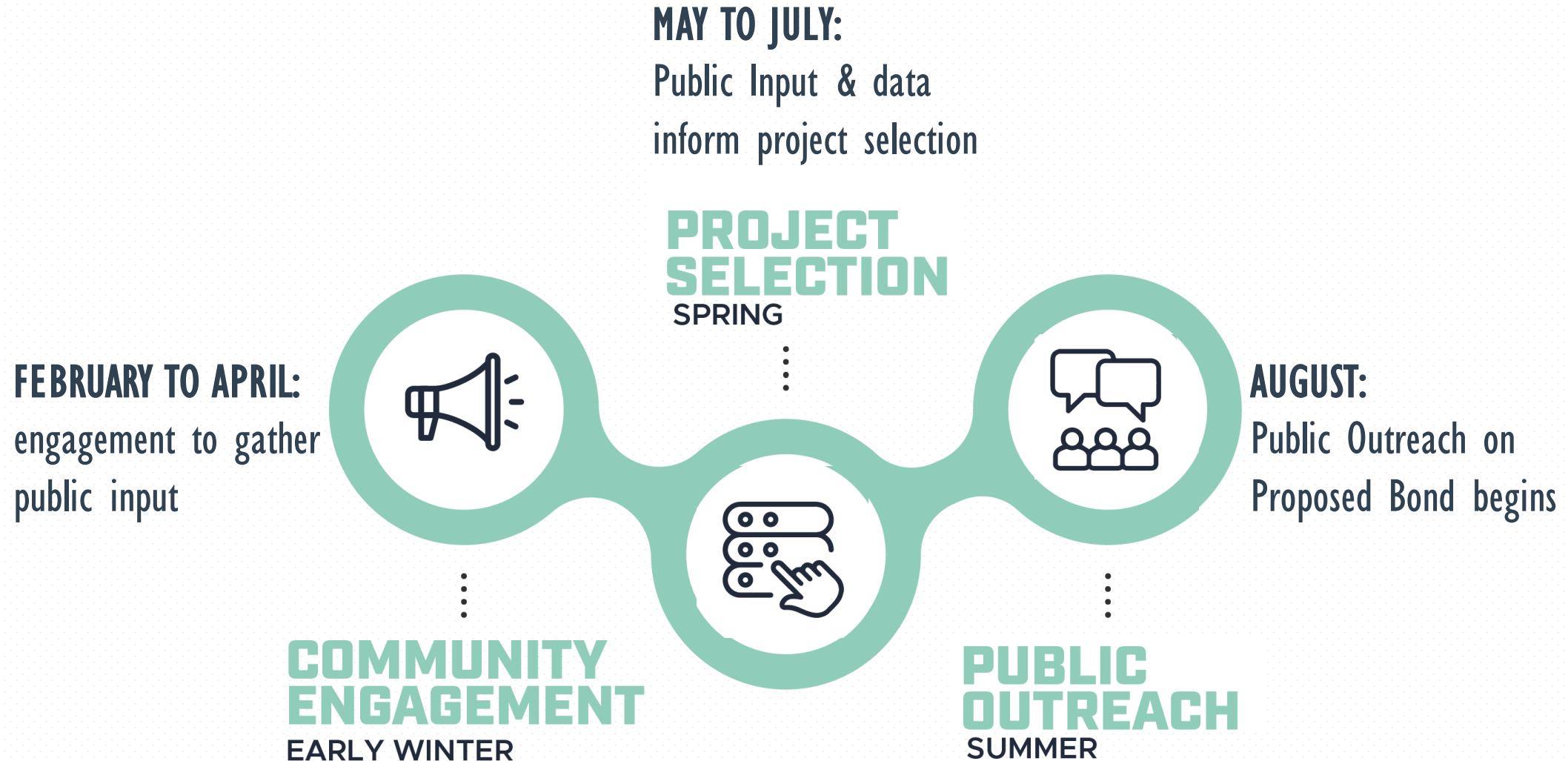
1. Grow existing and attract new target industries, including advanced manufacturing and innovation, to **foster economic prosperity** and create high paying jobs.
2. Continue the development of **integrated planning** efforts with communities of excellence partners.
3. Plan and implement dynamic and broadly partnered talent management strategies
4. **Develop a bond package focused on addressing identified community priorities and needs aligned with targeted areas of investment**
5. Develop solutions to increase access and services for El Pasoans experiencing or at risk of homelessness.

PROPOSED TIMELINE AND DEADLINES FOR POTENTIAL NOVEMBER 8, 2022 BOND ELECTION

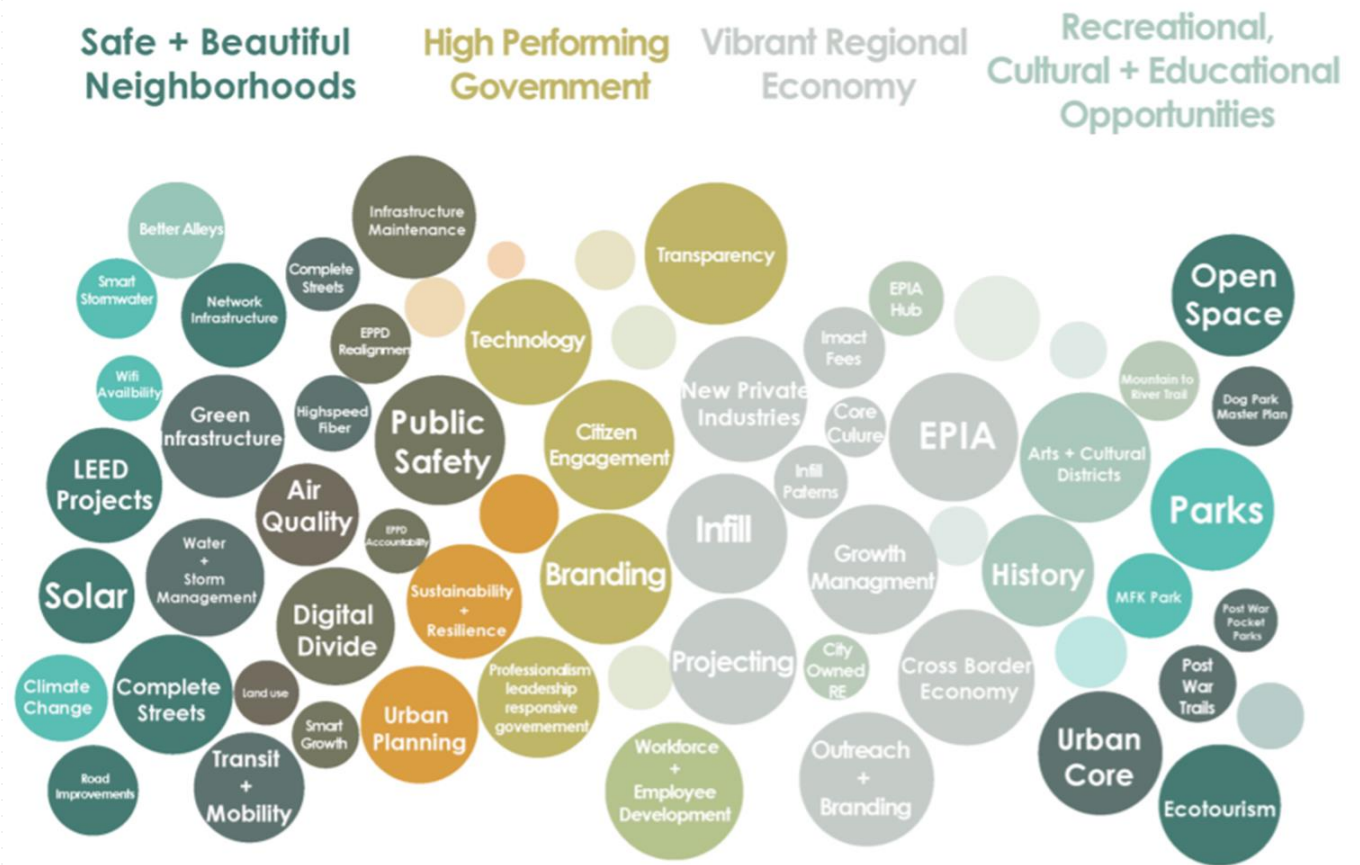


4

PROPOSED TIMELINE FROM COMMUNITY ENGAGEMENT TO PROJECT SELECTION & OUTREACH



- Project categories were derived from the 2021 Strategic Planning Session.
- Questions were developed to prioritize and identify values within those strategic plan areas.
- Questions focused on priorities, values and big picture, not specific projects.



**Safe + Beautiful
Neighborhoods**



**Safe, High quality,
Complete Streets**



As the city makes investments in streets and transportation infrastructure, which types of investments do you feel are most important?

**High Performing
Government**



**Addressing Climate
Change & Solar Energy**



What type of investments do you feel are most appropriate for the city in addressing energy and climate change?

Vibrant Regional
Economy



Economic Development



How should the city focus its
economic development programs
and investments?

Recreational Cultural &
Educational Opportunities



Parks and Recreation
Facilities



As the city makes investments in new
Parks and Recreational facilities, which
type of facilities do you feel are most
appropriate?

FROM STRATEGIC PLAN TO CAPITAL PLANNING





Strategic Planning
Prioritization



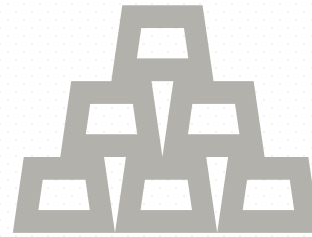
Safe High Quality
Complete Streets



Parks and
Recreation



Energy
+
Climate Change



Economic
Development



Tourism

10 FOCUS - PUBLIC ENGAGEMENT MILESTONES

WWW.ELEV8EP.COM



Capital Planning Survey

Your feedback is important! Let us know what projects are important to you.

The City is focusing on capital planning initiatives. In December 2021, the El Paso City Council directed the development of a bond package focused on addressing identified community priorities and needs aligned with targeted areas of investment.

TAKE THE SURVEY

Capital Planning, how do you fit in?



Why a survey?
A survey helps us understand your priorities. It tells us what kind of projects you want to see and where you want to see them.



How will the results be used?
Your input will be combined with other input to help us create a list of projects to pursue. We will use your input to help us create a list of projects to pursue.



What will you ask?
We will ask you to tell us what kind of projects you want to see and where you want to see them.



What is the goal?
The goal is to create a list of projects to pursue. We will use your input to help us create a list of projects to pursue.

HYBRID SURVEY



10 → As the city makes investments in new Parks and Recr...



A Large regional parks and facilities like "The Beast."



B Smaller, neighborhood parks within walking distance of neighborhoods.



C Investments in new equipment and infrastructure for existing parks.



D Facilities specific to certain sports or activities like football fields or indoor play courts.



RESULTS DASHBOARD



2022 Public Engagement Results

The results on this page reflect real-time results from the public engagement survey. The results are subject to change as more people complete the survey.

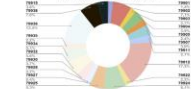
Survey will close on April 6, 2023

Number of Survey Responses **2170**

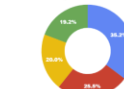
Survey Responses by City Council District



Survey Responses by Zip Code



Where should the city focus its investments in new or refurbished parks and recreation facilities?



● Parkways and recreation facilities in need of modernization.
● Areas where there are currently no parks or recreational facilities.
● Areas where the city's investment in parks has historically been low.

What type of parks facilities would people like to see more investment in?



● Large regional parks and facilities like "The Beast."
● Smaller, neighborhood parks within walking distance of neighborhoods.
● Facilities specific to certain sports or activities like football fields or indoor play courts.
● Investments in new equipment and infrastructure for existing parks.

What park facilities are people most likely to use in their daily life?



● Linear parks and improved trails.
● Open spaces, meadows, and cultural facilities.
● Recreation park, multi-use facilities.
● Open spaces, meadows, and cultural facilities.
● Linear parks and improved trails.
● Open spaces, meadows, and cultural facilities.

FOCUS - PUBLIC ENGAGEMENT MILESTONES

PUBLIC ENGAGEMENT

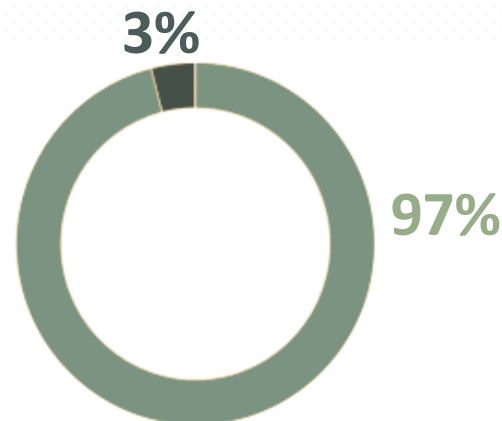
11 IN PERSON MEETINGS

6 DISTRICT MEETINGS
+
5 HYBRID MEETINGS

ONLINE 24/7 PRESENCE

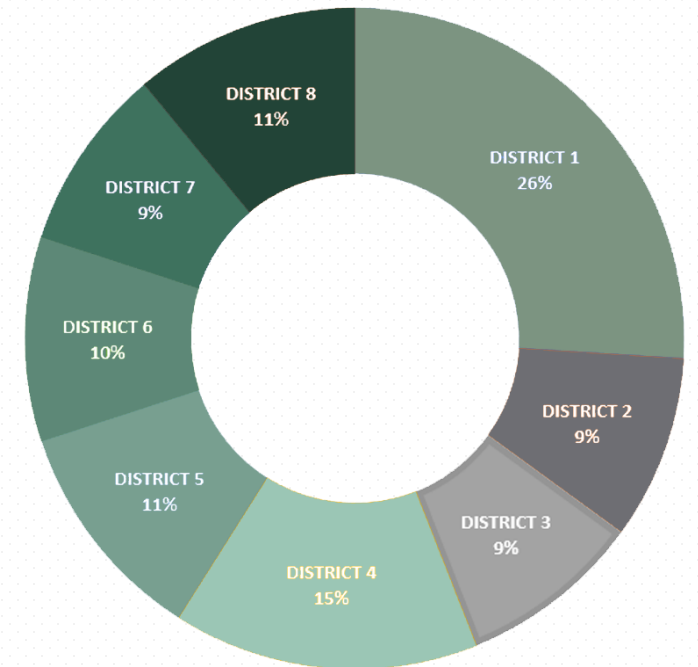


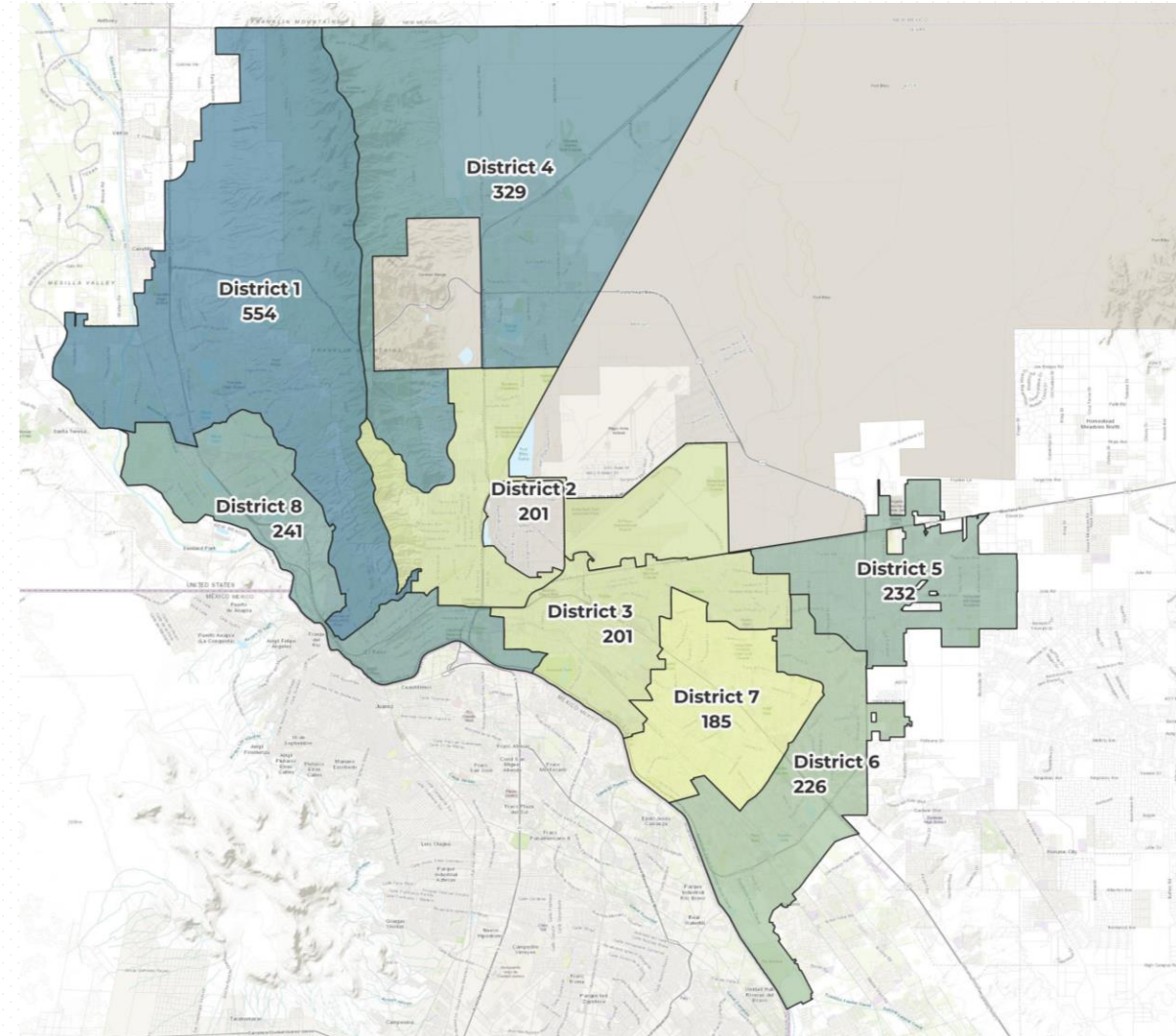
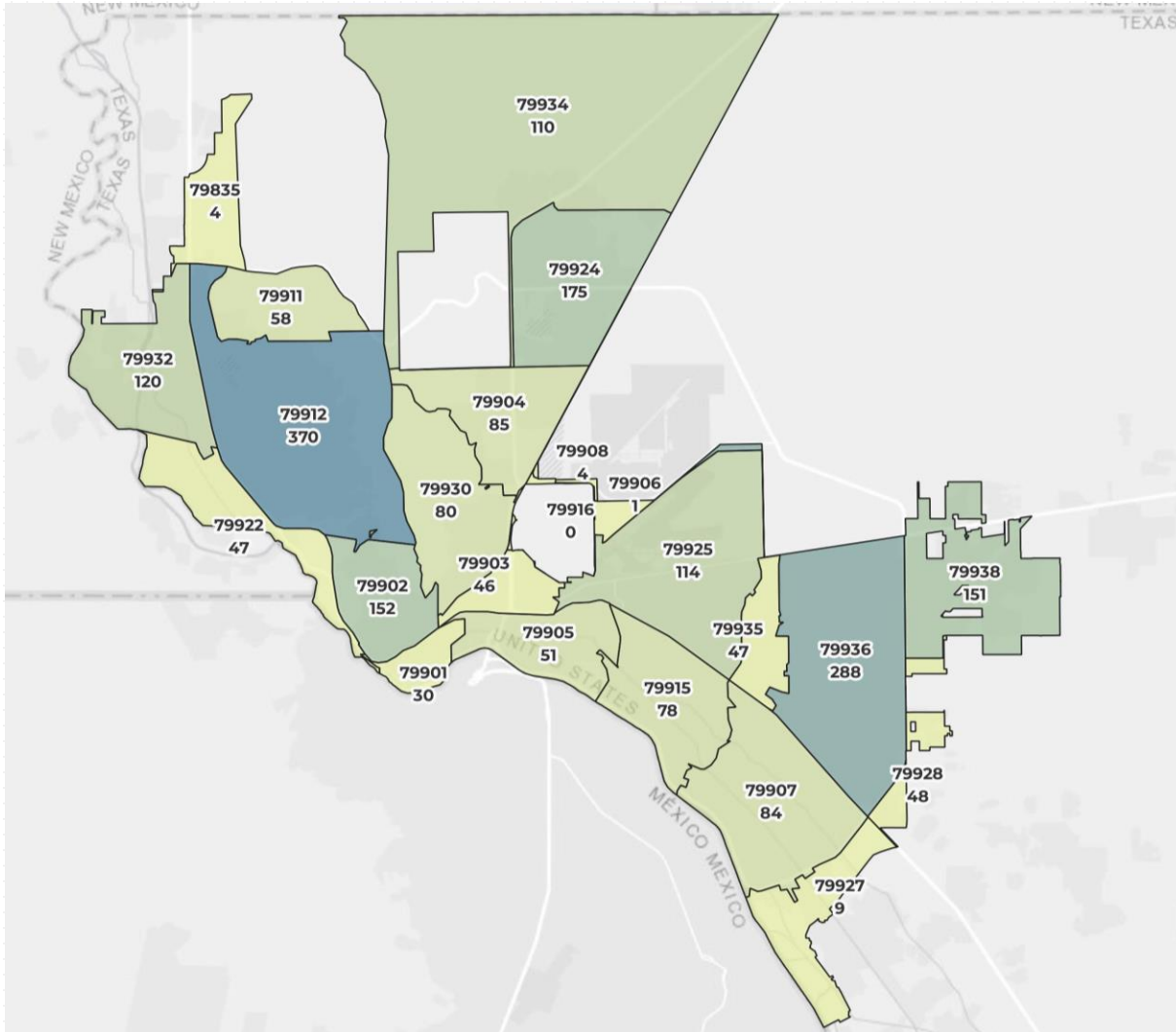
ONLINE PRESENCE



ONLINE VS. IN-PERSON RESULTS

DISTRICT RESPONSES

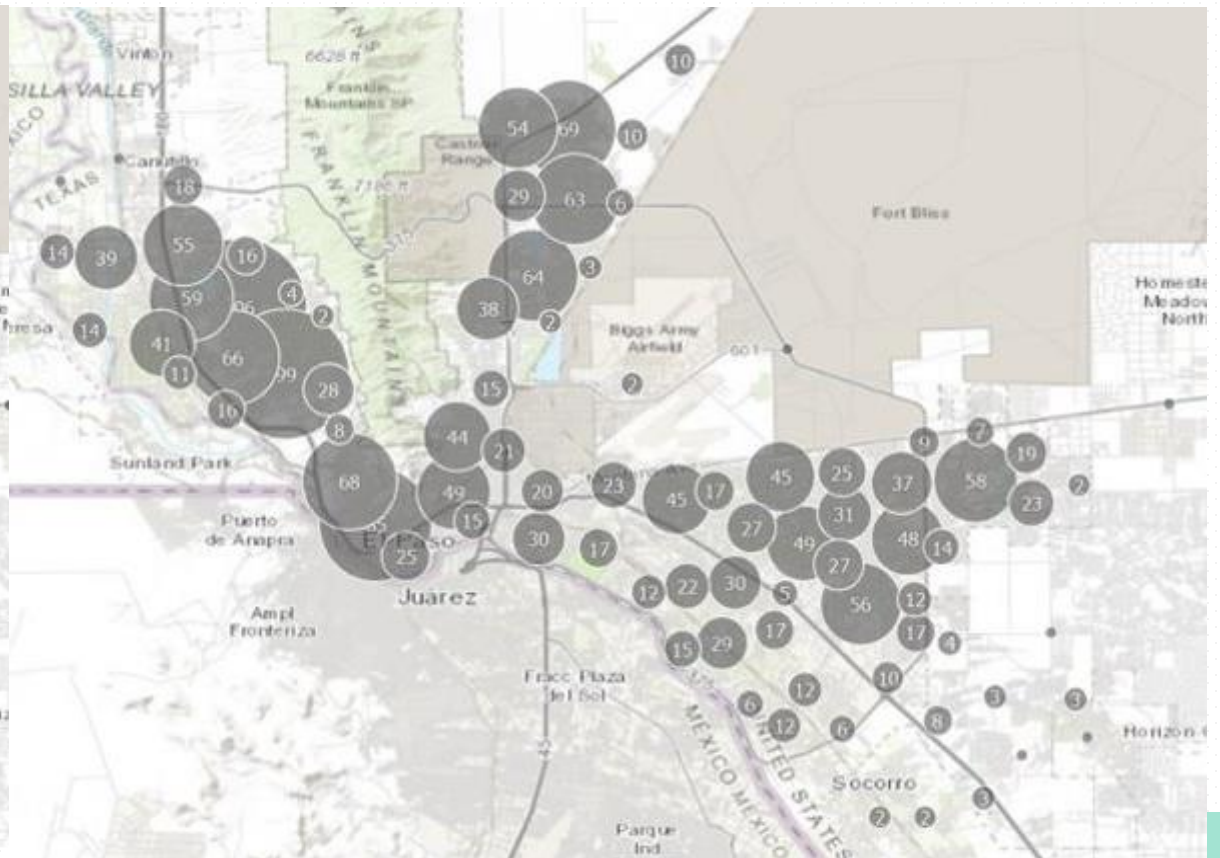
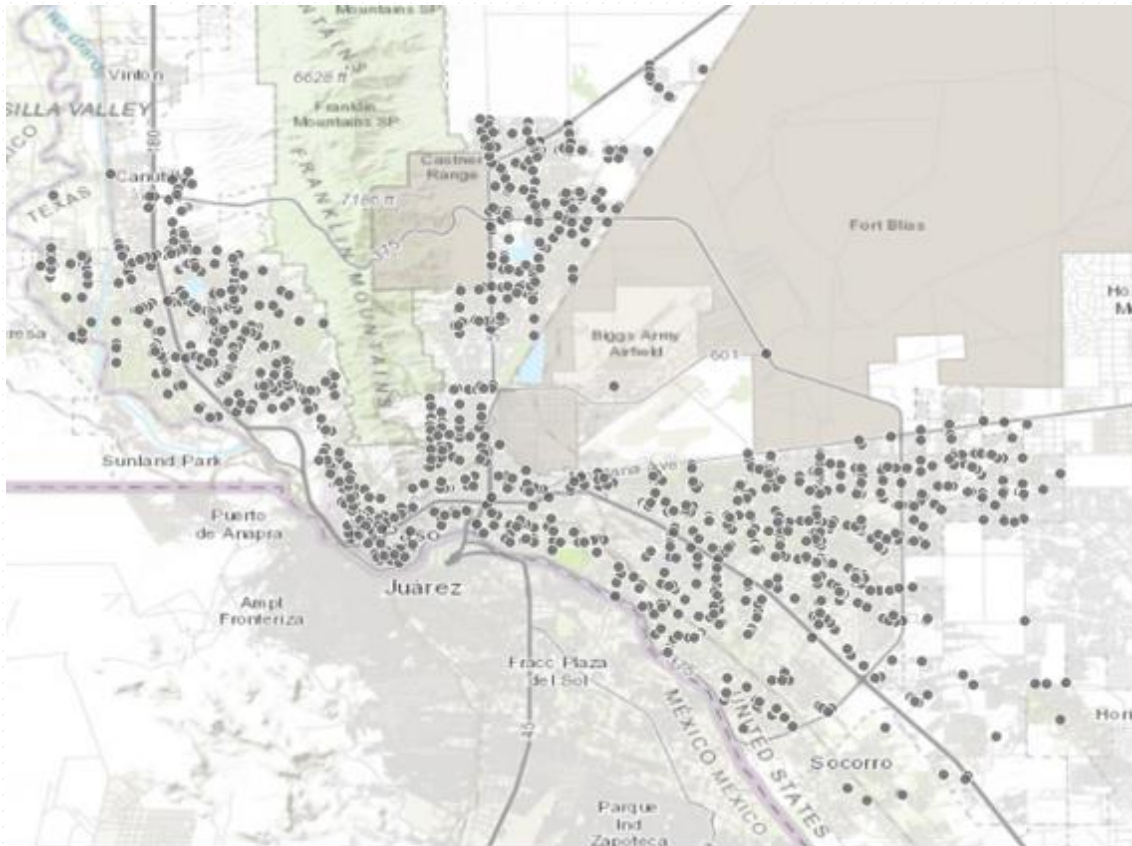




13 FOCUS - PUBLIC ENGAGEMENT MILESTONES

City-wide results

- Healthy geographic distribution.
- Higher response count in high growth area highlights demand for services associated with outward growth.



High-level milestones



Strategic Planning
Prioritization



Safe High Quality
Complete Streets



Parks and
Recreation



Energy
+
Climate Change



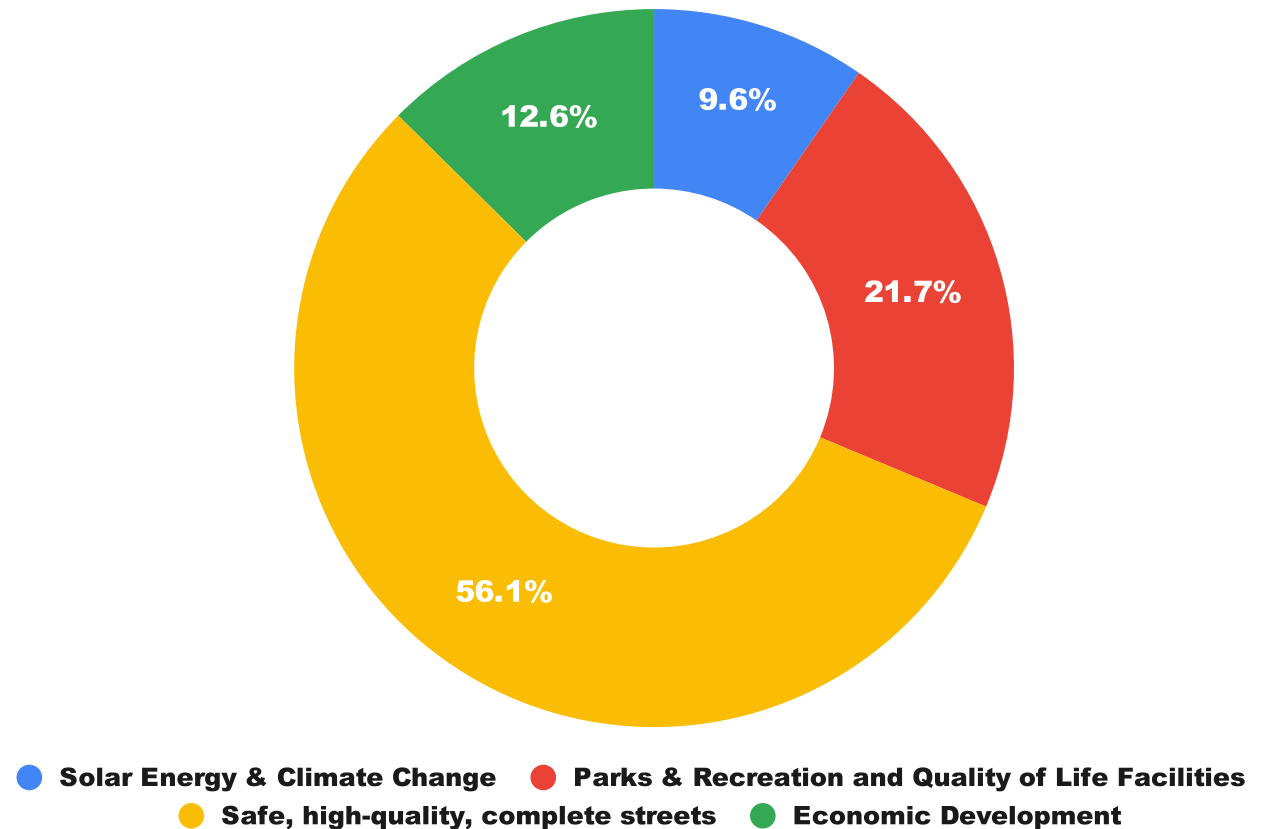
Economic
Development



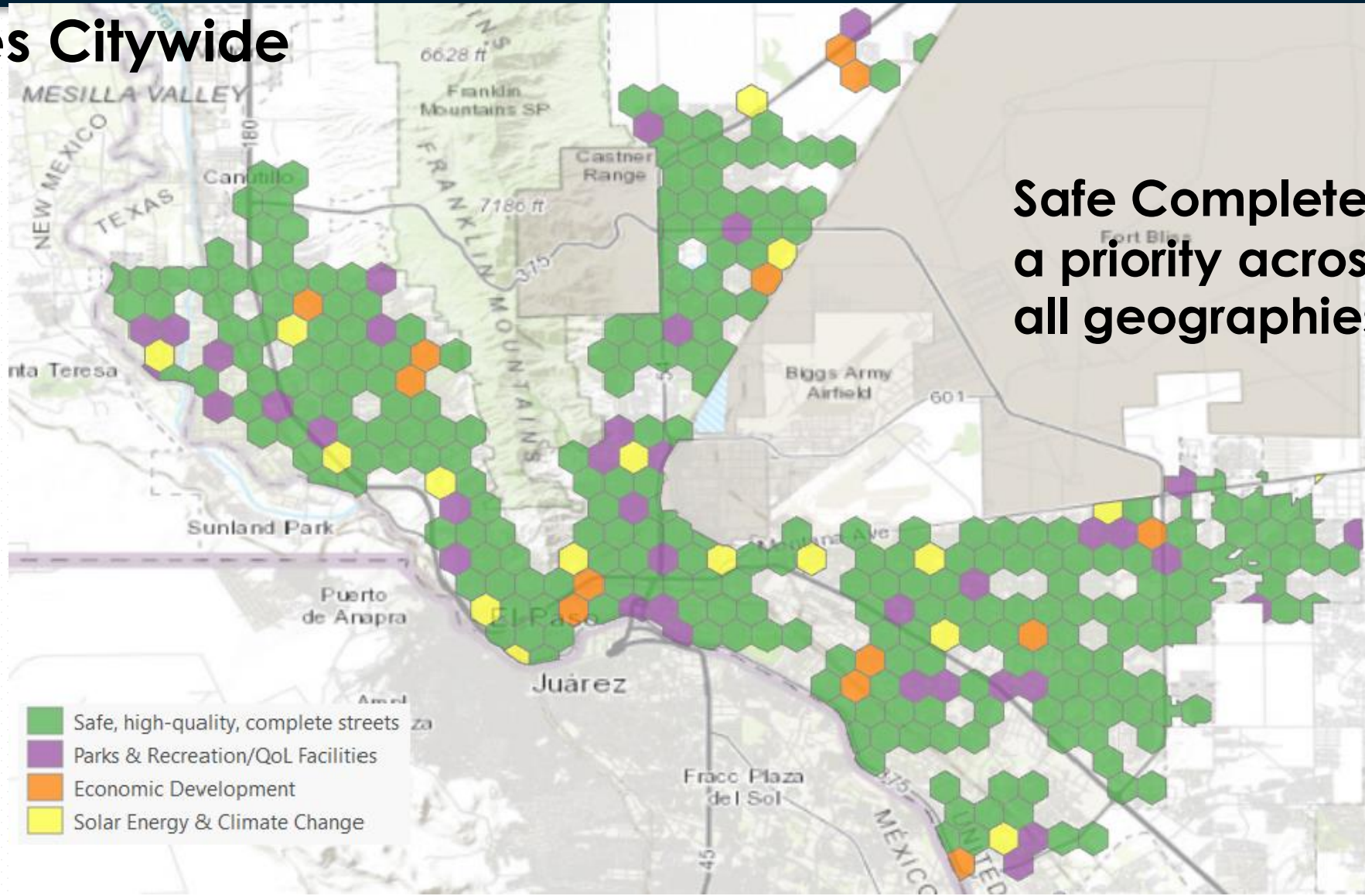
Ecotourism

1. Overwhelming support for "Safe, high quality, complete streets"
2. Parks & Recreation and QoL Facilities also prioritized
3. Economic Development
4. Solar Energy & Climate Change

What project areas have people identified as most important to them?



- **Priorities Citywide**



Safe Complete Steets are a priority across all geographies.

Survey Results – Community Priorities.

- 56%** 1. Safe Complete Steets
- 22%** 2. Parks & Recreation Facilities
- 13%** 3. Economic Development
- 9%** 4. Solar Energy & Climate Change



Strategic Planning
Prioritization



Safe High Quality
Complete Streets



Parks and
Recreation



Energy
+
Climate Change



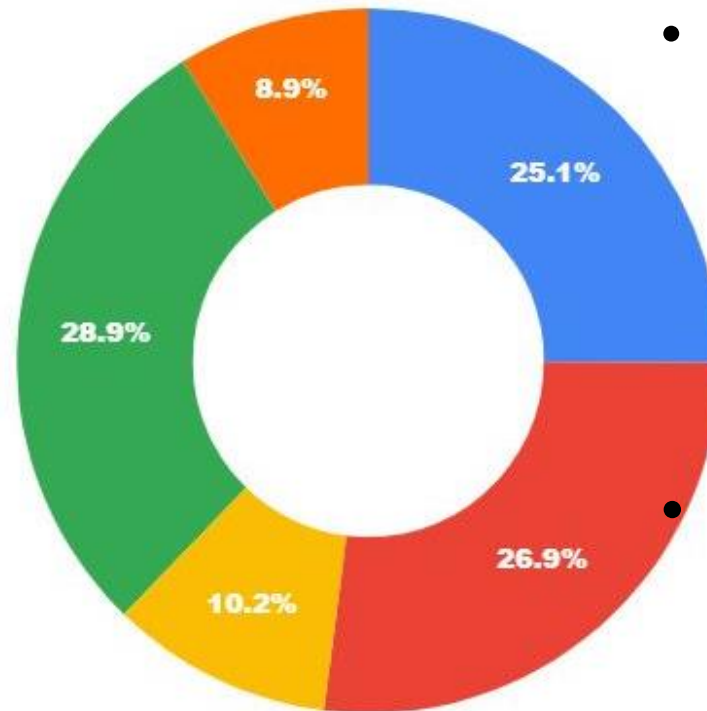
Economic
Development



Tourism

- Investments that prioritize **STORMWATER** drainage **9%**

Improvements that reduce
**CONGESTION, TRAFFIC,
EMISSIONS** **29%**

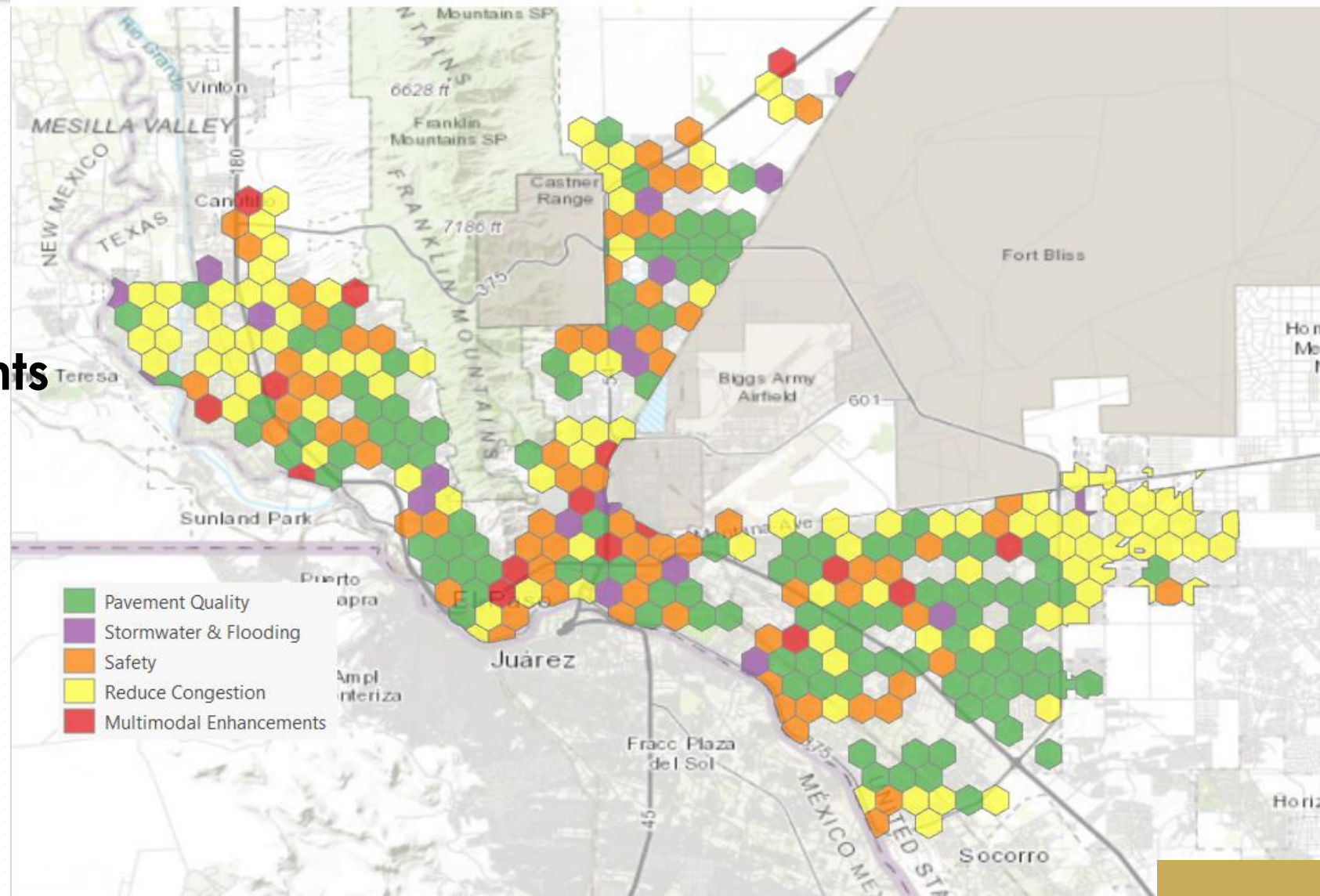


- Investments that prioritize **SAFETY**: crosswalks street lighting **25%**
- Investments that improve **PAVEMENT** quality **27%**

- Expand availability of **BIKE FACILITIES** & trails **10%**

20 FOCUS — SAFE, HIGH QUALITY, COMPLETE STREETS

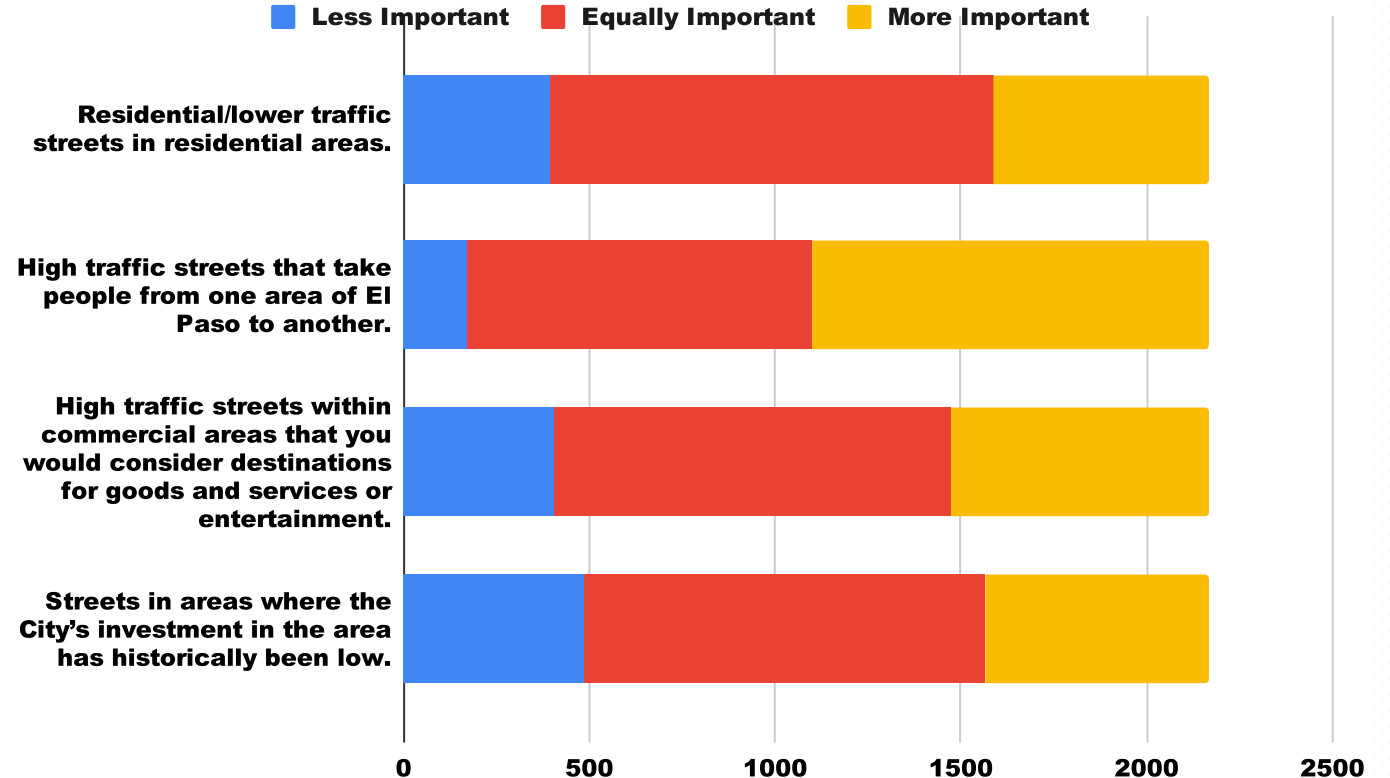
- **CONGESTION** mitigation prioritized by auto-oriented communities.
- Improving pavement quality and improvements that prioritize **SAFETY** are evenly represented.



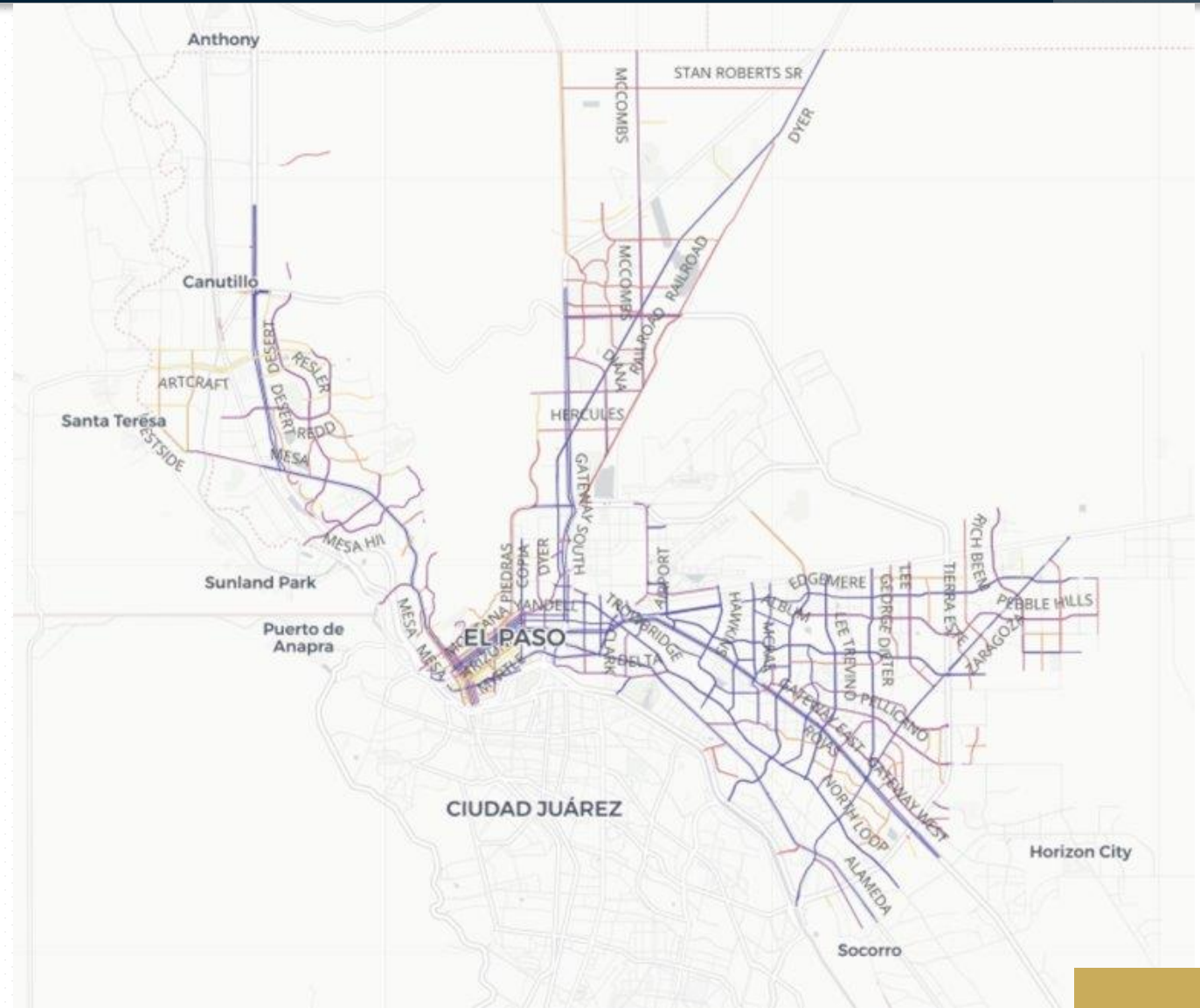
21 FOCUS — SAFE, HIGH QUALITY, COMPLETE STREETS

- Respondents placed more importance on **HIGH TRAFFIC STREETS**.
- **DESTINATION STREETS** were also identified as more important.
- **HISTORICALLY UNDERINVESTED** areas and residential streets similarly ranked.

What people thought about the importance of different locations for transportation related investments.



- Results support the work of the High Priority Corridor CFT.
- Prioritizes roadways improvements based on:
 - Traffic volume,
 - Economic opportunity,
 - Health & Safety,
 - Environmental Justice
- *PCI Plus*



Program Recommendations

- Project selection for our streets program should go **beyond resurfacing**.
- **Safety** and **traffic congestion** are also priorities.

Project Type

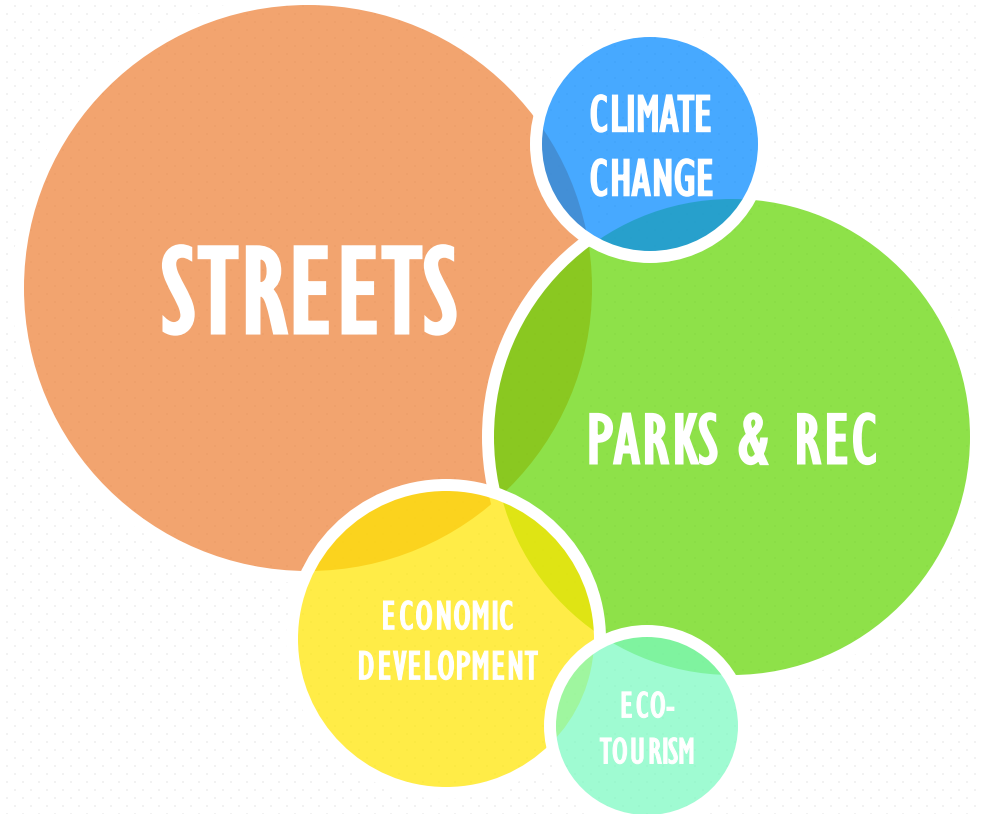
- Make enhancements to existing streets that increase mode choice, thereby increasing capacity of roadways while simultaneously improving pavement quality.
- Construct new roadways that alleviate traffic congestion but construct them as complete streets.
- Include streetlighting, expanded sidewalks and trails that enhance accessibility as part of repaving and reconstruction projects to address safety. Repurposing right of way from pavement to sidewalk also reduces long-term paving liabilities.

Project Location

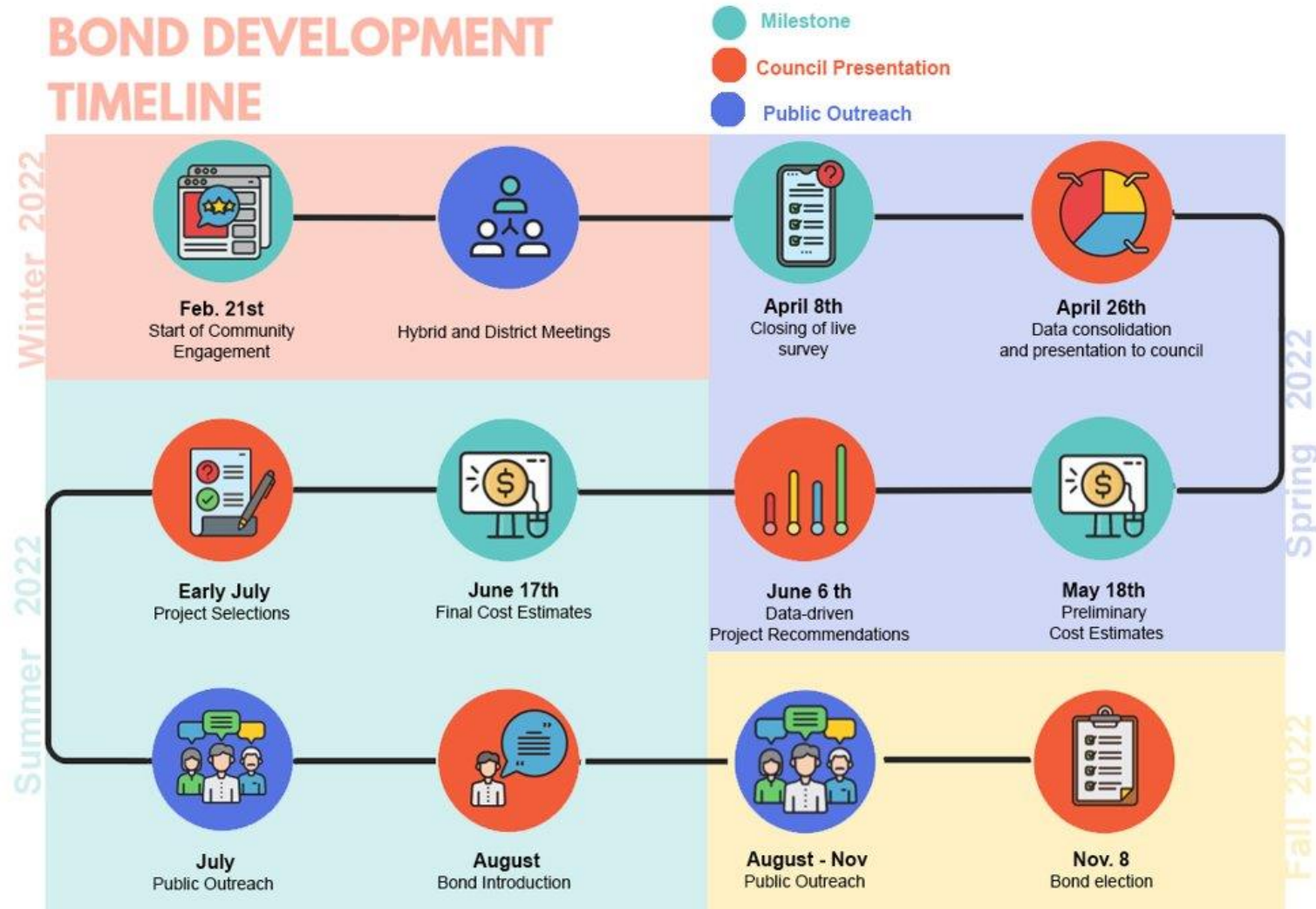
- Prioritizing streets that are identified as high-traffic (High Priority Corridors)

COMMUNITY PROGRESS BOND PROGRAM RECOMMENDATIONS

- **Prioritize street infrastructure investments.**
 - Fill in gaps, increase connectivity, reduce congestion
 - Build complete streets, prioritize safety
- **Modernize aging parks, recreation facilities**
 - Focus on existing, outdated facilities
 - Expand open space and trails
 - Invest in Neighborhoods
- **Targeted Economic Development**
 - Support Small Business
 - Attract Large Employers
 - Location Matters
 - Prioritize Infill
- **Address Climate Change**
 - Reduce Emissions & congestion
 - Invest in Solar and energy efficiency
- **Explore Ecotourism**
 - Capitalize on outdoor amenities
 - Capitalize on El Paso's history







FULL PUBLIC ENGAGEMENT SURVEY RESULTS

High-level milestones



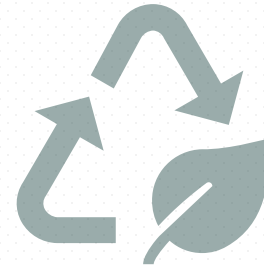
Strategic Planning
Prioritization



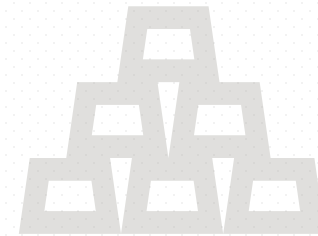
Safe High Quality
Complete Streets



Parks and
Recreation



Energy
+
Climate Change



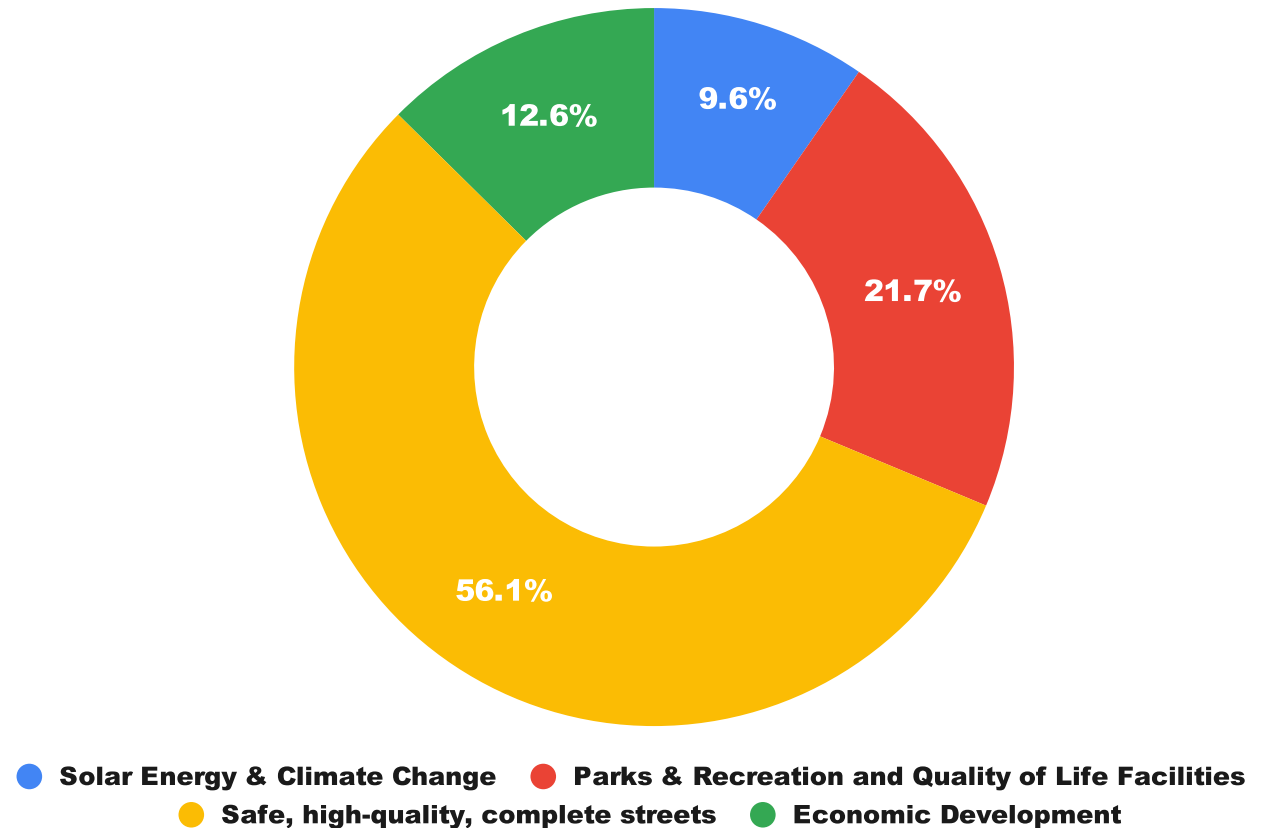
Economic
Development



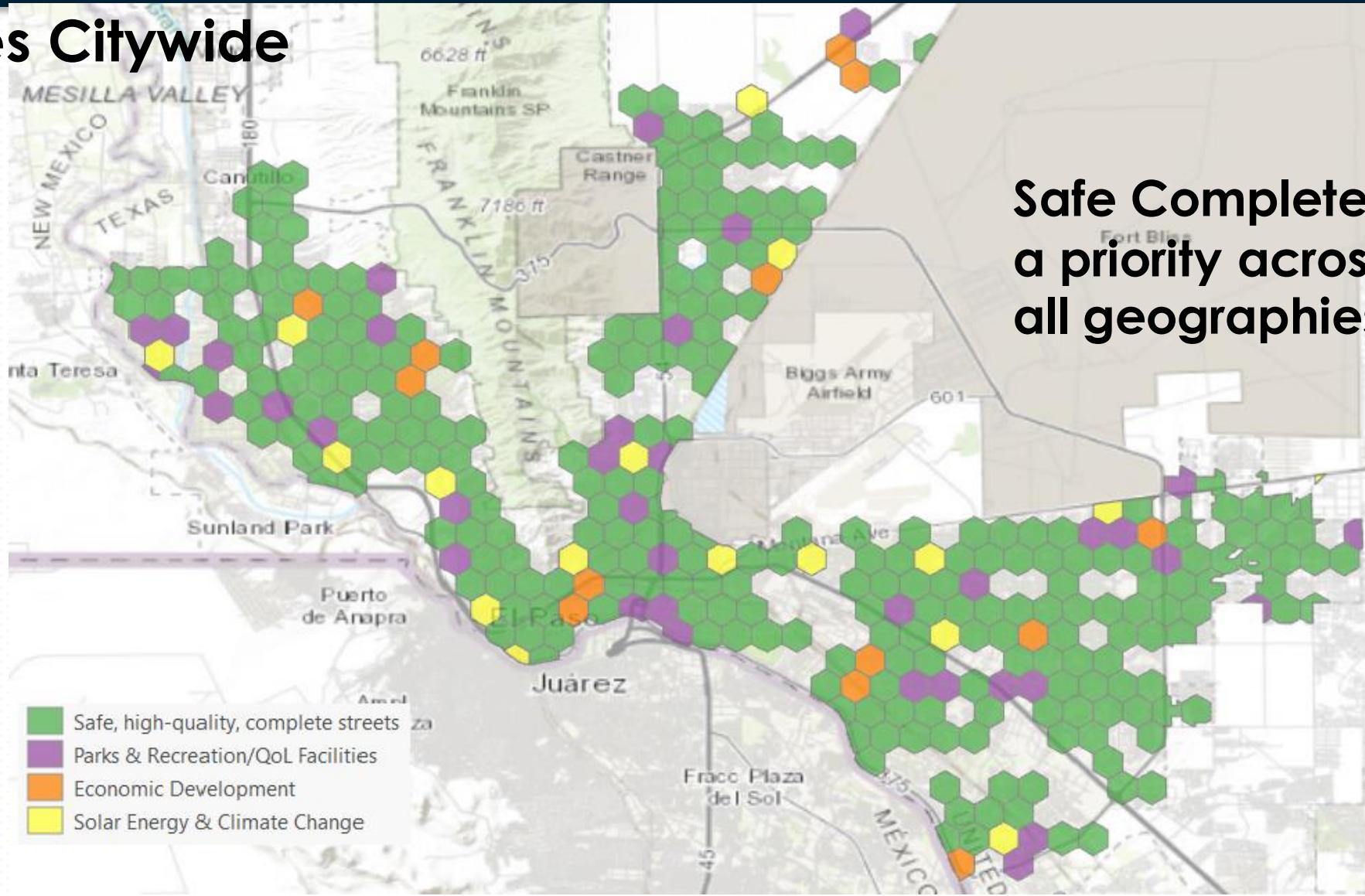
Ecotourism

1. Overwhelming support for "Safe, high quality, complete streets"
2. Parks & Recreation and QoL Facilities also prioritized
3. Economic Development
4. Solar Energy & Climate Change

What project areas have people identified as most important to them?



- **Priorities Citywide**



Safe Complete Steets are a priority across all geographies.

Survey Results – Community Priorities.

- 56%** 1. Safe Complete Steets
- 22%** 2. Parks & Recreation Facilities
- 13%** 3. Economic Development
- 9%** 4. Solar Energy & Climate Change



Strategic Planning
Prioritization



Safe High Quality
Complete Streets



Parks and
Recreation
+
Quality of Life



Energy
+
Climate Change



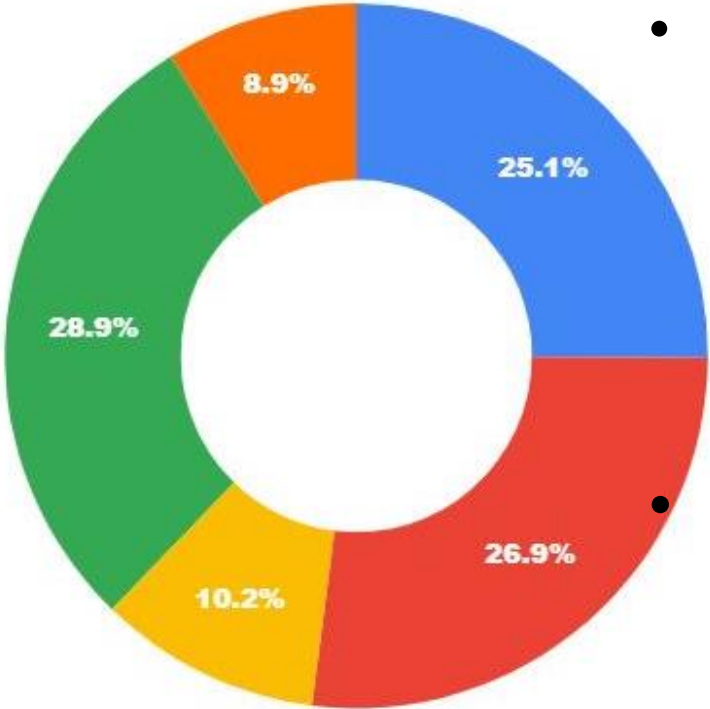
Economic
Development



Tourism

- Investments that prioritize **STORMWATER** drainage **9%**

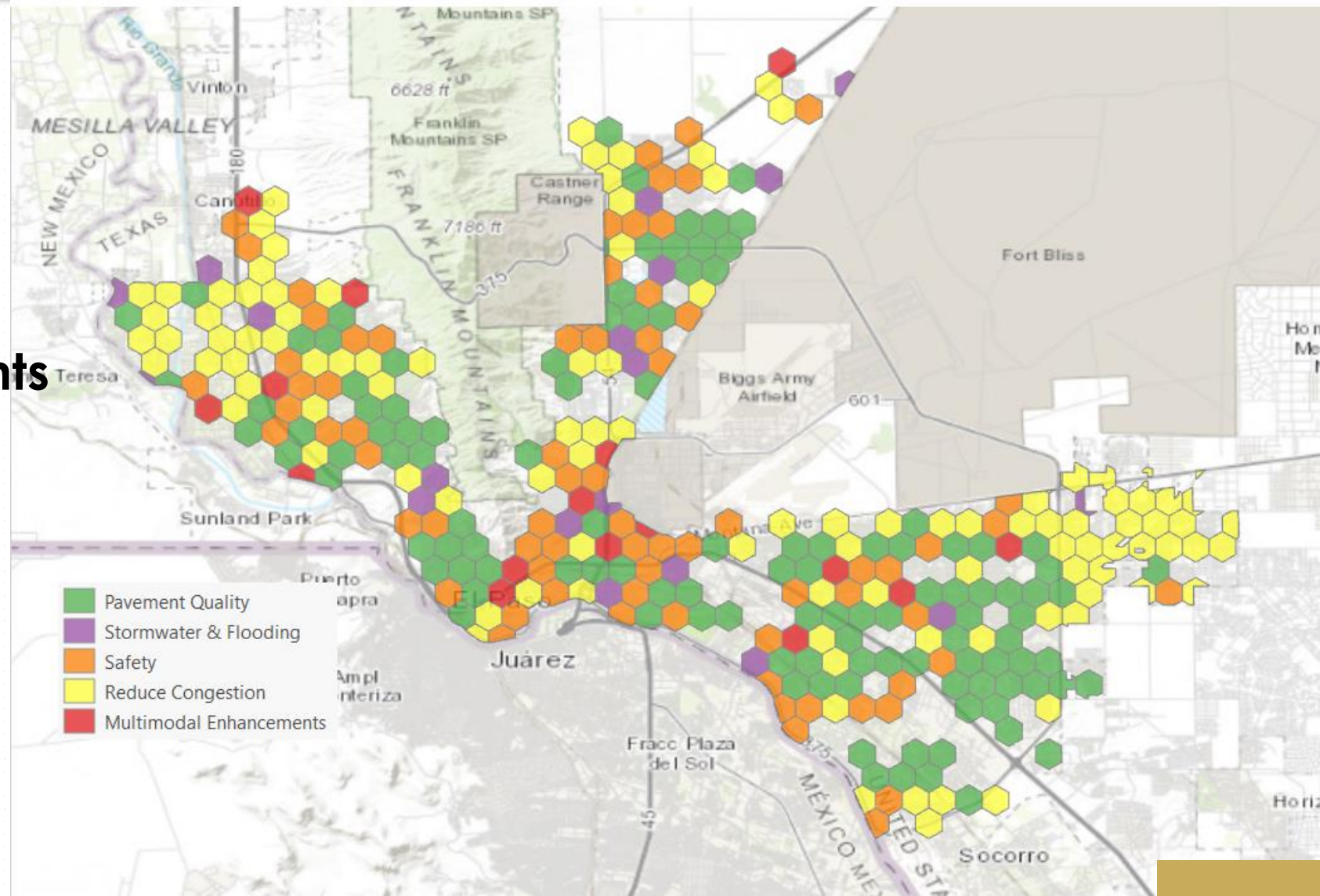
Improvements that reduce **CONGESTION, TRAFFIC, EMISSIONS** **29%**



- Investments that prioritize **SAFETY**: crosswalks street lighting **25%**
- Investments that improve **PAVEMENT** quality **27%**
- Expand availability of **BIKE FACILITIES** & trails **10%**

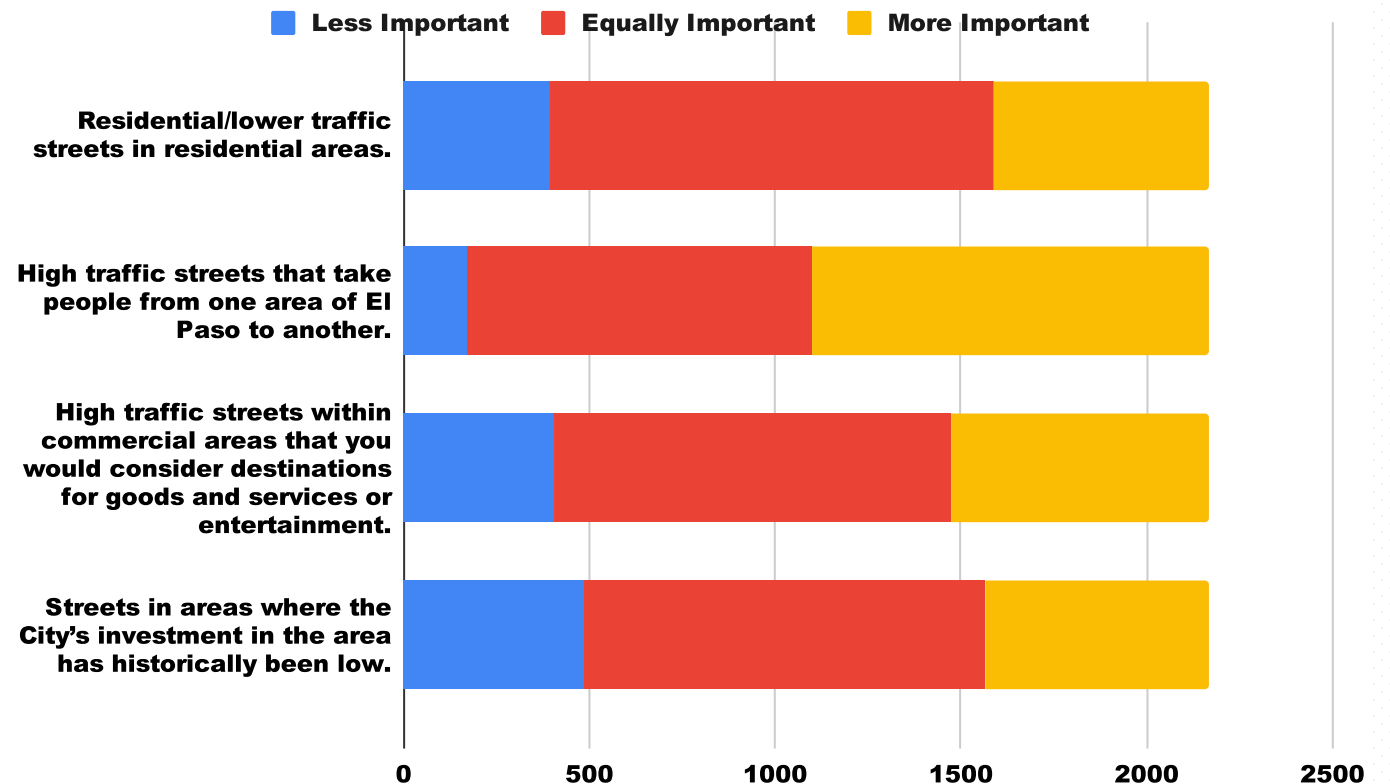
34 FOCUS — SAFE, HIGH QUALITY, COMPLETE STREETS

- **CONGESTION** mitigation prioritized by auto-oriented communities.
- Improving pavement quality and improvements that prioritize **SAFETY** are evenly represented.



- Respondents placed more importance on **HIGH TRAFFIC STREETS**.
- **DESTINATION STREETS** were also identified as more important.
- **HISTORICALLY UNDERINVESTED** areas and residential streets similarly ranked.

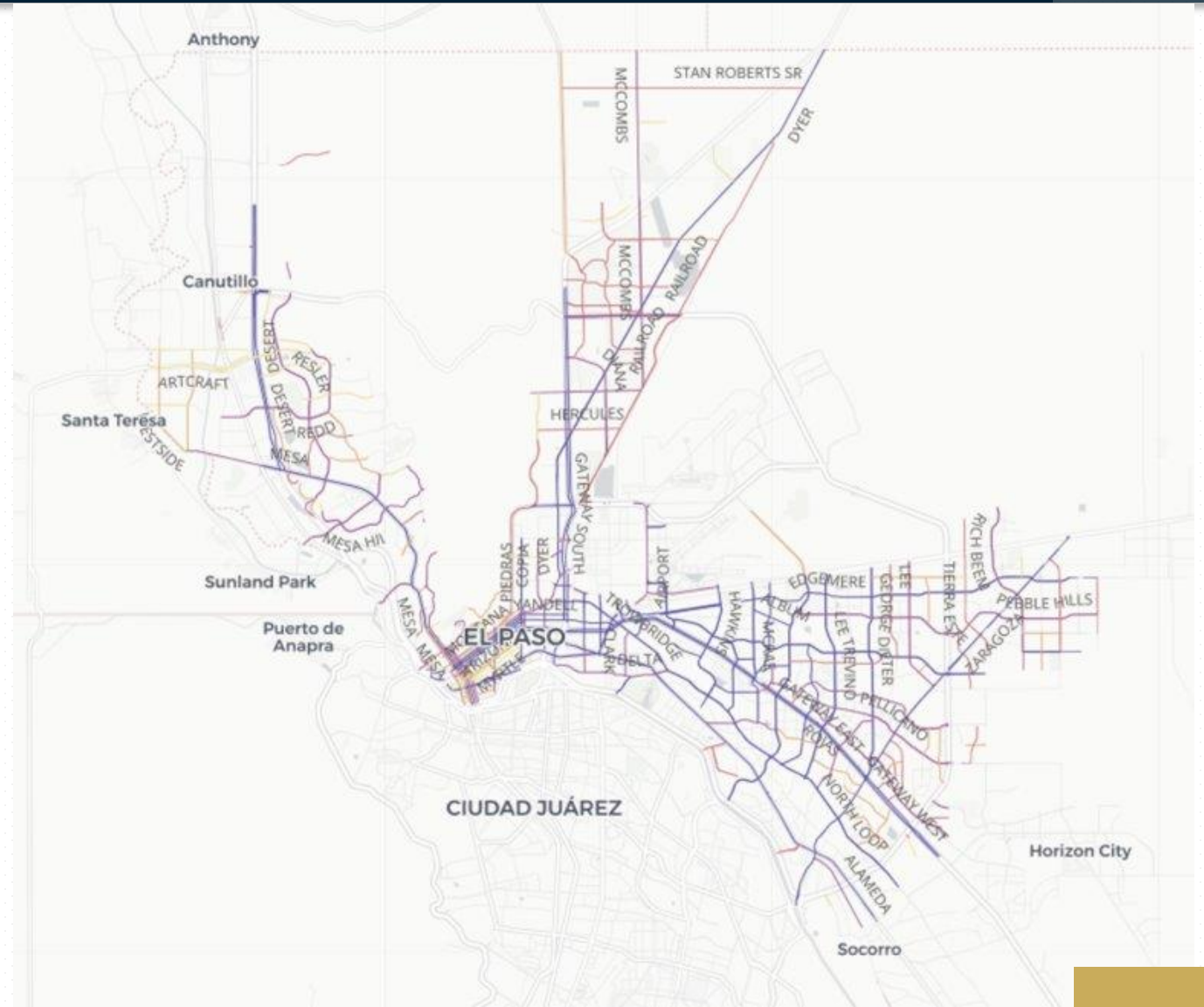
What people thought about the importance of different locations for transportation related investments.



36

FOCUS — SAFE, HIGH QUALITY, COMPLETE STREETS

- **Results support the high priority corridors focus.**
- **Prioritizes roadways on:**
 - **Traffic volume,**
 - **Economic opportunity,**
 - **Health & Safety,**
 - **Environmental Justice**



Program Recommendations

- Project selection for our streets program should go **beyond resurfacing**.
- **Safety** and **traffic congestion** are also priorities.

Project Type

- Make enhancements to existing streets that increase mode choice, thereby increasing capacity of roadways while simultaneously improving pavement quality.
- Construct new roadways that alleviate traffic congestion but construct them as complete streets.
- Include streetlighting, expanded sidewalks and trails that enhance accessibility as part of repaving and reconstruction projects to address safety. Repurposing right of way from pavement to sidewalk also reduces long-term paving liabilities.

Project Location

- Prioritizing streets that are identified as high-traffic (High Priority Corridors)

High-level milestones



Strategic Planning
Prioritization



Safe High Quality
Complete Streets



Parks and
Recreation



Energy
+
Climate Change



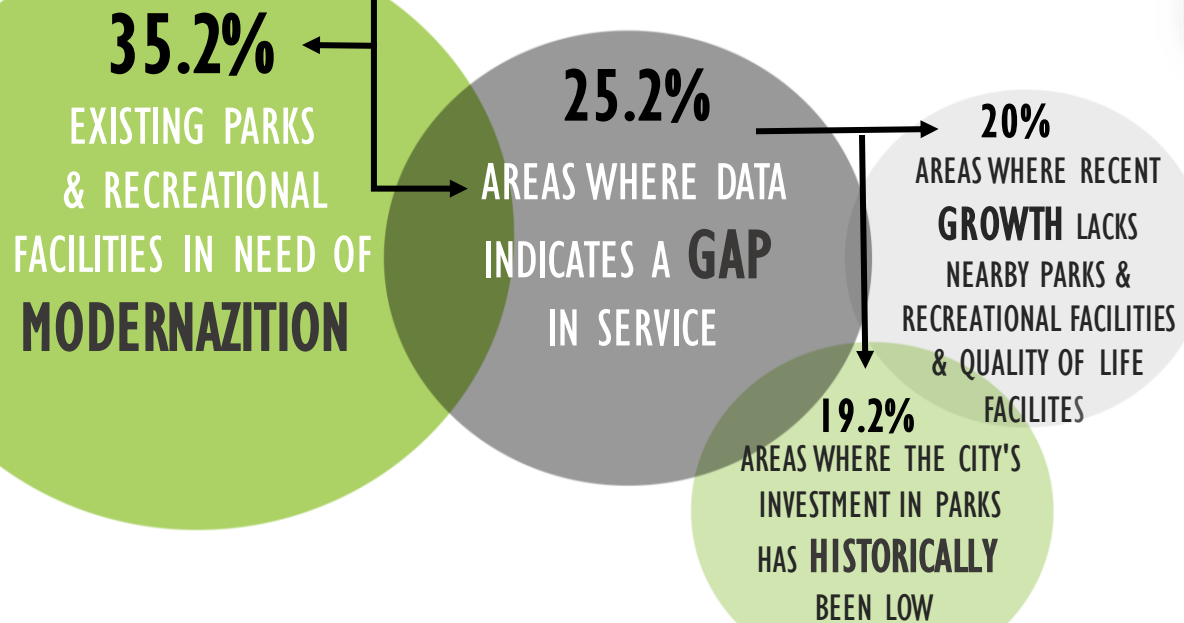
Economic
Development



Ecotourism

39 FOCUS — PARKS AND RECREATION FACILITIES

FACILITY LOCATION PRIORITIES



VS

40 FOCUS — PARKS AND RECREATION FACILITIES

FACILITY TYPES — INVESTMENT PRIORITIES

35.6%

Smaller, neighborhood parks within walking distance of neighborhoods

21.2%

Investments in new equipment and infrastructure for existing parks

18.8%

Other quality of life facilities like museums and libraries

15.3%

Large regional parks and facilities like "The Beast"

9.1%

Facilities specific to certain sports or activities like football fields or indoor play courts

PROJECT PRIORITIES

35.6%



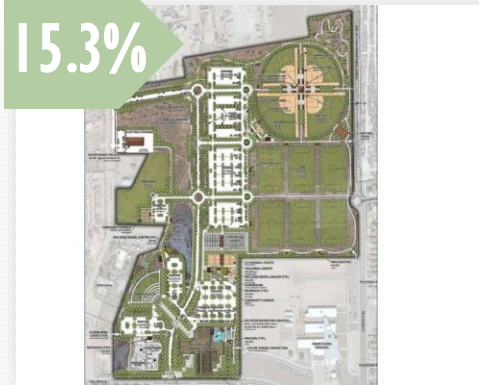
21.2%



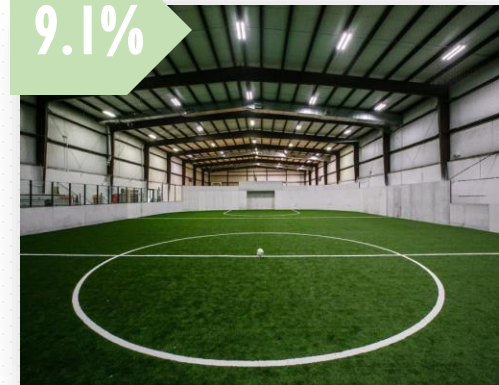
18.8%



15.3%

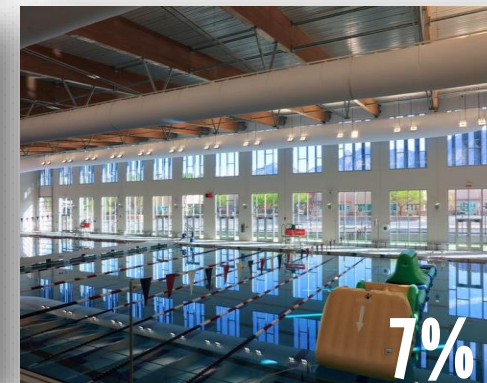


9.1%



4 | FOCUS — PARKS AND RECREATION FACILITIES

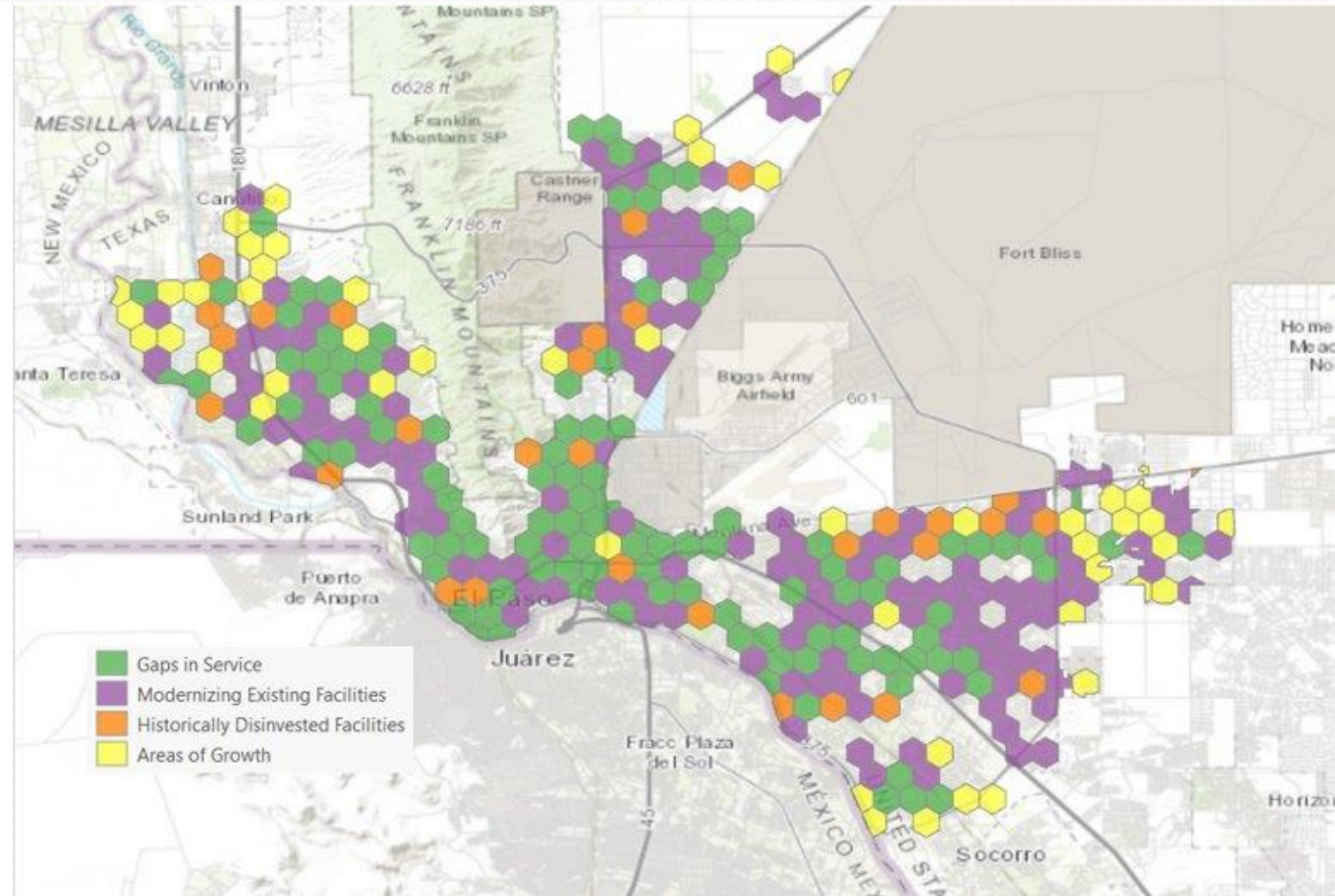
- Respondents prioritized Linear parks and trails, and open space.
- Museums, libraries and cultural facilities were also prioritized.
- Strong in-person support for new, non-traditional competitive facilities.



42 FOCUS — PARKS AND RECREATION FACILITIES

Two main priorities supported citywide:

- Investments in areas with a **SERVICE GAP**
- **EXISTING PARKS** and recreational facilities in need of **MODERNIZATION**



Program Recommendations

- Focus on Parks and Recreation facilities through **modernization, filling service gaps, and invest in existing, neighborhood facilities.**
- Invest in expanded **museums, libraries and cultural facilities.**
- Prioritize trails, linear parks and open space.

Project Type

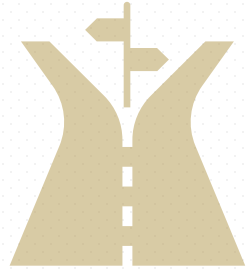
- Invest in modernizing existing, older facilities through 21 century amenities and standardization of facilities and included amenities
- Continue to **develop trails within parks** and to **make new connections** between facilities.
- Make targeted **investments** in infrastructure & **equipment** in existing parks.

Project Location

- Focus & identify existing, neighborhood parks with outdated facilities.
- Identify service gaps in growth areas.



Strategic Planning
Prioritization



Safe High Quality
Complete Streets



Parks and
Recreation



Energy
+
Climate Change



Economic
Development



Ecotourism

45 FOCUS — ENERGY & CLIMATE CHANGE

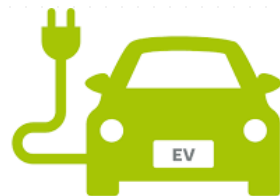
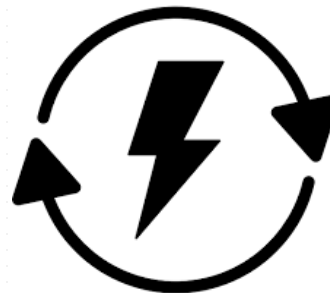
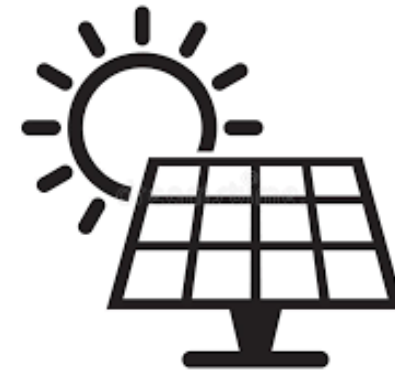
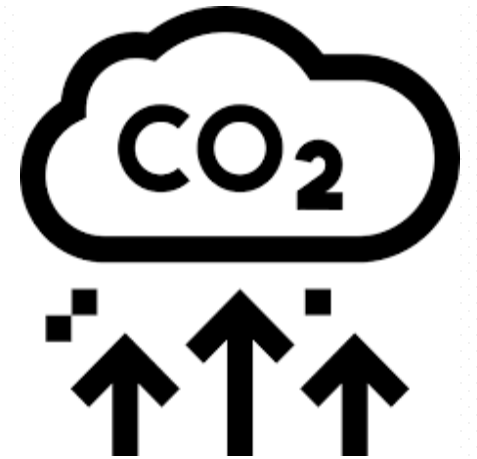
INVESTMENT PRIORITIES

35% Transit & mobility investments that will help reduce vehicle emissions & traffic congestions

30.6% Investments in solar like rooftop solar installations for city owned facilities

25.7% Investments to reduce energy cost & energy use in city facilities

8.7% Investments in electric vehicles & charging stations

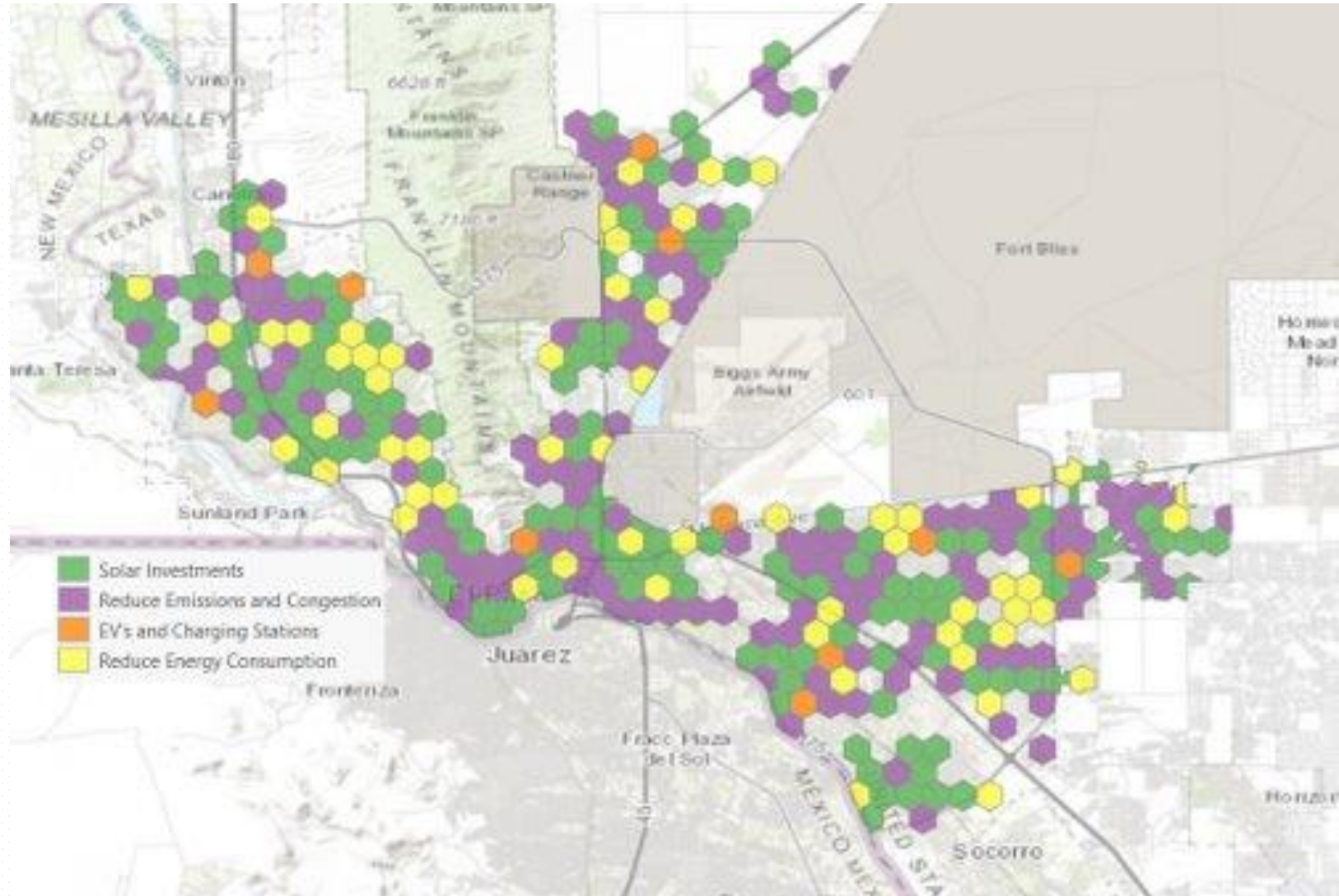


46 FOCUS — ENERGY & CLIMATE CHANGE

Two main priorities supported citywide:

- SOLAR INVESTMENTS
- Reduction in traffic CONGESTION & EMISSIONS

Reducing ENERGY CONSUMPTION prioritized mainly in suburban & residential areas.



47 FOCUS — ENERGY & CLIMATE CHANGE

Program Recommendations

- Prioritize **transit & mobility** investments, **reduce congestion**.
- **Reduce energy costs** and implement **solar strategies**.

Project Type

- Invest in modernizing existing, older facilities to reduce energy costs through energy savings upgrades and solar installations.
- Focus on congestion mitigation through transit and mobility investments that increase connectivity, reduce vehicle miles travelled.

Project Location

- City-wide.



Strategic Planning
Prioritization



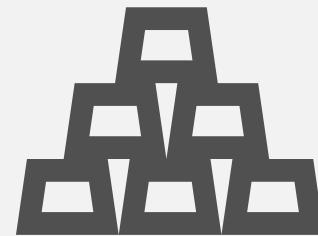
Safe High Quality
Complete Streets



Parks and
Recreation



Energy
+
Climate Change



Economic
Development

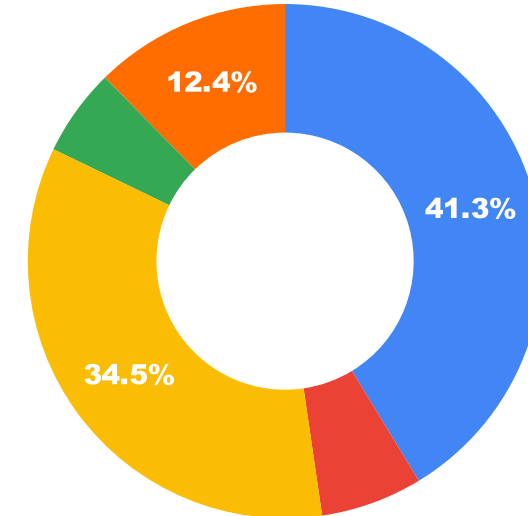


Ecotourism

49 FOCUS — ECONOMIC DEVELOPMENT

- Support for small local businesses edges out attracting large employers.
- The combined small and large business support speak to overwhelming support for investments that prioritize employment & job growth.

How should the city focus its economic development programs and investments?

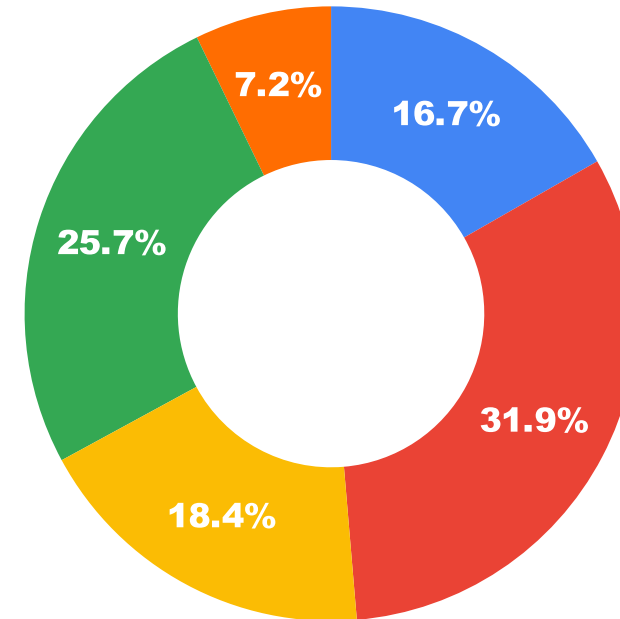


- Supporting small, local business meeting local needs and creating fewer jobs
- Supporting businesses and industries that align with the goals of regional
- Attracting large, big-name businesses and retailers with high job potential.
- Investments that support creating expanded housing options.
- Supporting physical improvements to business districts like streets, sidewalks,

50 FOCUS — ECONOMIC DEVELOPMENT

- Strong support for infill development, economic based neighborhood revitalization.
- People want to see results close to home.
- Very little support for “location doesn’t matter”

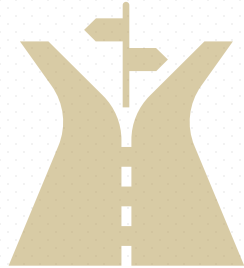
Where should the City focus its economic development efforts?



- Along high priority transportation corridors.
- On vacant lots or abandoned existing buildings within existing neighborhoods.
- Downtown.
- The district and area where I live.
- Location doesn't matter.



Strategic Planning
Prioritization



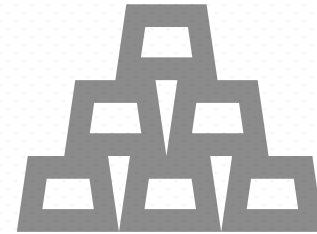
Safe High Quality
Complete Streets



Parks and
Recreation



Energy
+
Climate Change



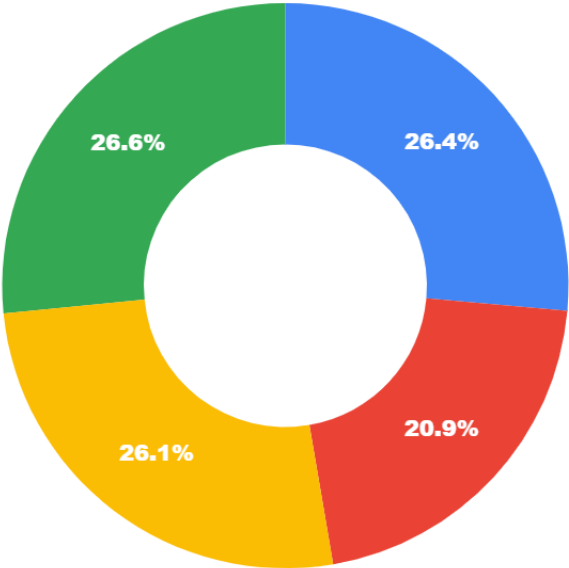
Economic
Development



Tourism



What type of Tourism Facilities would you love to see in El Paso that are currently not available?



- Eco Tourism that supports camping grounds near the mountains, and creates “experience destinations.”
- Eco Tourism that supports robust local mountain biking events with supporting facilities to draw national competitions.
- Eco Tourism that celebrates our riverfront amenities and supports local farming businesses.
- Heritage Tourism that celebrates our history as a city, specifically our downtown core and traditional neighborhoods.

53 FOCUS - TOURISM



Program Recommendations

- Project selection for the ecotourism program should rely on prioritizing tourism that **supports camping**, creates **experience destination** near our **mountains or riverfront**.

Project Type

- Destination camping grounds, equipped to create an experience near our mountains
- Trailheads, trails and riverfront amenities providing connectivity to agricultural areas.
- Historic preservation, wayfinding or other projects that celebrate downtown and traditional neighborhoods.

Project Location

- Mountain adjacent areas in the northwest or northeast
- Locations along or adjacent to the river that can potentially connect or activate riverfront areas
- Traditional neighborhoods with historic character.