



Community Health Transformation

April 26, 2022



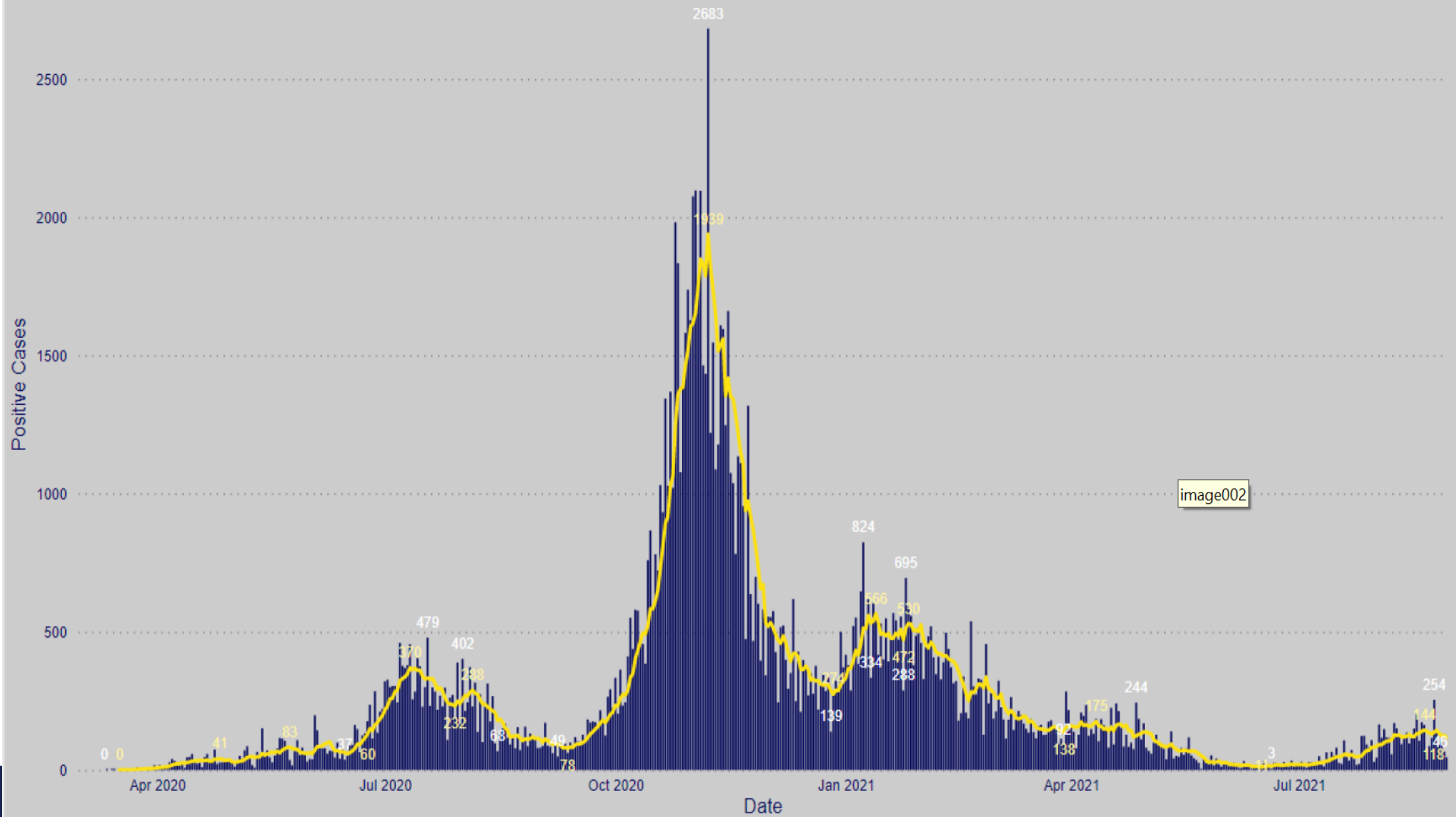
Department of Public Health

Recap of the August 2021 Department of Public Health Operations Update:

- Continues to deliver exceptional services:
 - Immunizations
 - Pediatric Dental Procedures
 - TB treatments
 - WIC services
 - HIV prevention and services; PrEP treatments
- COVID-19 changed our approach:
 - No longer just focus on individual illnesses
 - Focus on the overall well being of our community
 - Focus on collaboration and partnership

EPI Curve with 7-day rolling average

● Positive Cases ● 7 Day Rolling Average



'We're in a crisis stage': Texas border city reels from coronavirus surge



BORDER & IMMIGRATION

El Paso's COVID-19 Spike Is a Binational Problem

Leaders on both sides of the Rio Grande claim border crossings, an aspect of daily life in the region, have contributed to the recent surge in infections.

By Katie Nodjimbadem

November 6, 2020

0



Cars pass through a coronavirus testing site at the University of Texas at El Paso last week.

Cengiz Yur/Getty

CITY OF EL PASO



MAYOR
Oscar Leeser

CITY MANAGER
Tommy Gonzalez



PRESIDENT AND CEO
Jacob Cintron



COUNTY JUDGE
Ricardo A. Samaniego

NEWS
RELEASE

02 / 26 / 2021

City and County Partner Centralizing COVID-19 Vaccine Registration Process

El Paso, Texas—The City and County of El Paso are preparing to centralize the registration process for the COVID-19 vaccine.

"Through the Communities of Excellence Program, we have continued to strengthen our partnership with University Medical Center. We have conducted Lean Six Sigma training together and have been able to reduce wait times at our testing and vaccine sites because of it," said City Manager Tommy Gonzalez. "Today's announcement is yet another example of our collaboration. By working together, we are demonstrating to state and federal officials that we are ramping up our coordination and communication efforts as a community to be able to put more shots in arms quicker and more efficiently."

"Data collection and understanding of how our vaccination process is unfolding have become exceedingly important to guide the direction and location of our community's vaccination programs," said Jacob Cintron, UMC President & CEO. "There are great successes that UMC and the City of El Paso have partnered in achieving before and throughout the pandemic. As Tommy notes, Communities of Excellence has made our partnership foundation strong. And one of our successes has been the collection and sharing of data. Additionally, as we look to formalize a centralized pool of vaccination recipients, I am certain we will see our shared experience and mutually beneficial efficiencies come to fruition."

The centralization process may take some time, requiring UMC to continue opening its registration portal a few more times until the process is finalized.

Once the mechanism to share data from the City's list is established, UMC will no longer open its online registration system but will collaborate with the City of El Paso to administer vaccines to those on the comprehensive pre-registration list.

While the process continues to be refined, UMC will request a specified amount of registrants from the City of El Paso's pre-registration list. UMC will then contact the individuals from the pre-registration list, schedule, enter data and administer 1st/2nd doses to those individuals at the County Coliseum site. Similarly, the City will continue to administer 1st/2nd doses at one of the three City vaccine sites (George Perry, High Ridge and the Convention Center).

UMC will maintain a small portion of its weekly allocation for new healthcare personnel, patients that fall within Phase 1A or 1B, its clinics and/or for use by its single mobile unit.

For more information about data, testing and other COVID-19 information, visit EPstrong.org.

###



MEDIA CONTACT:
Laura Cruz-Acosta
Strategic Communications Director
(915) 212-1071



MEDIA CONTACT:
Ryan Mielke
Director of Public Affairs
Office 915-521-7656
Cell 915-493-5235

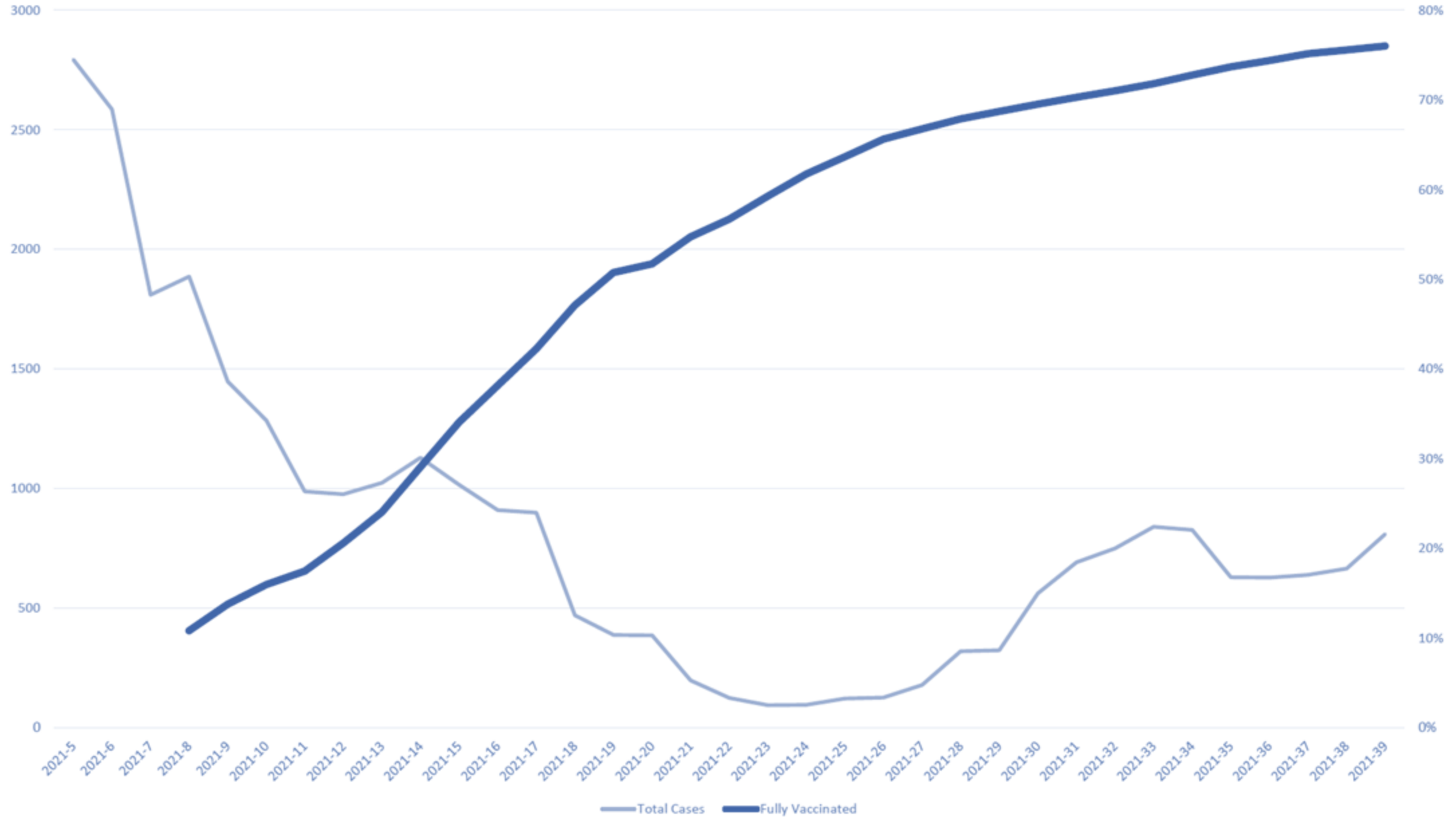
El Paso among top 7 cities leading the nation in COVID-19 vaccinations

by David Cross | Friday, June 11th 2021

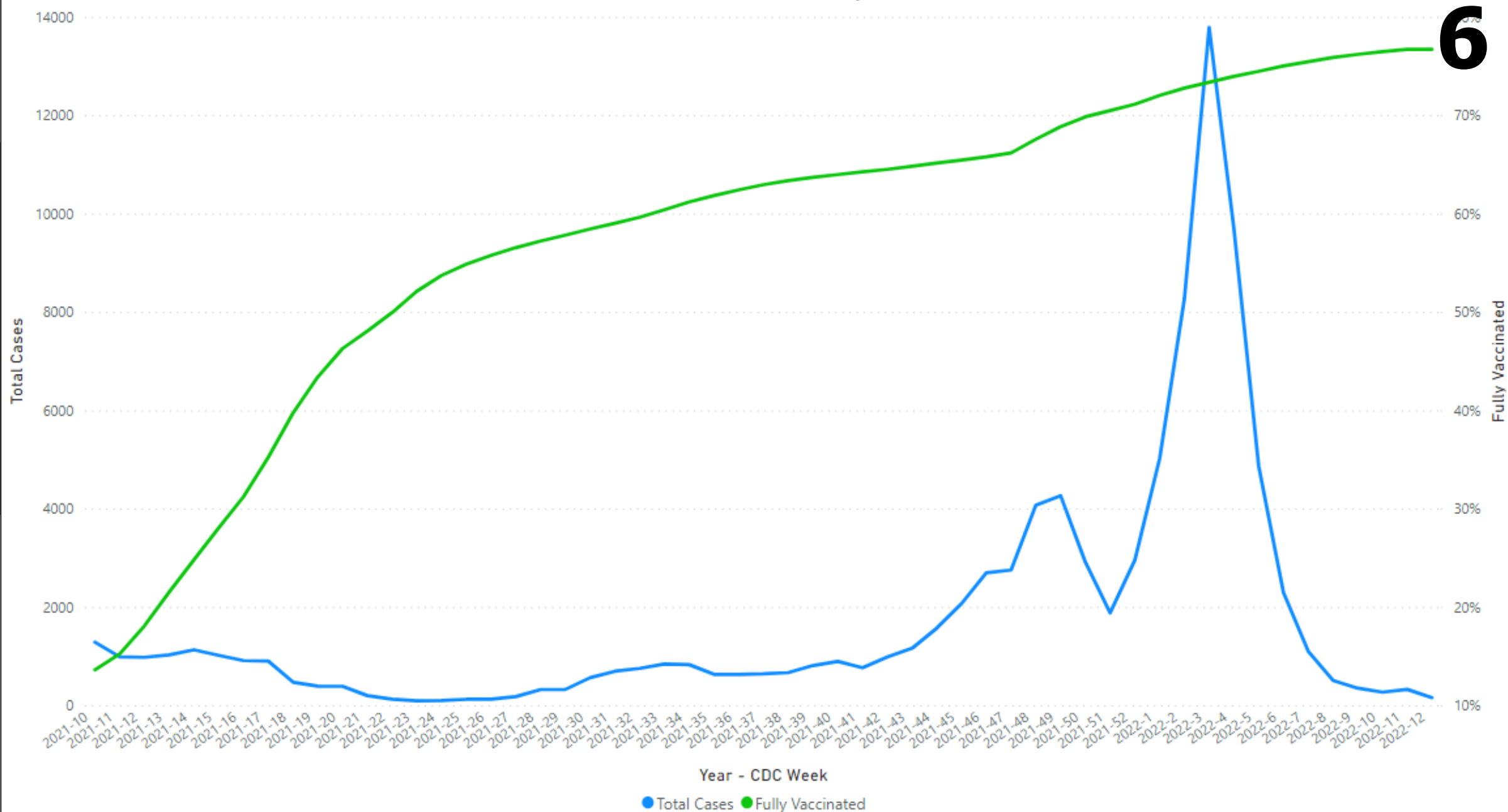


FILE PHOTO - Skyline in downtown El Paso, Texas, January 2019. (KFOX14/CBS4)

Vaccination Effect on New Cases by CDC Week 2021



Vaccination Effect on New Cases by CDC Week



6

CORONAVIRUS IN TEXAS

The delta variant is wreaking havoc on most of Texas — but not El Paso. Here's why.

High vaccination rates, geography and a sense of community in the wake of 2019's Walmart shootings help keep El Paso's delta numbers low, experts and locals say.

BY KAREN BROOKS HARPER SEPT. 13, 2021 4 AM CENTRAL

[f](#) [twitter](#) [email](#) [COPY LINK](#) [REPUBLISH](#)



Angel Castro, 16, received his first shot of the Pfizer vaccine at William D. Slider Middle School in El Paso on July 22, 2021. After being battered by COVID-19 surges last year, El Paso has been a bright spot during the delta surge. Briana Sanchez/El Paso Times via REUTERS

EL PASO

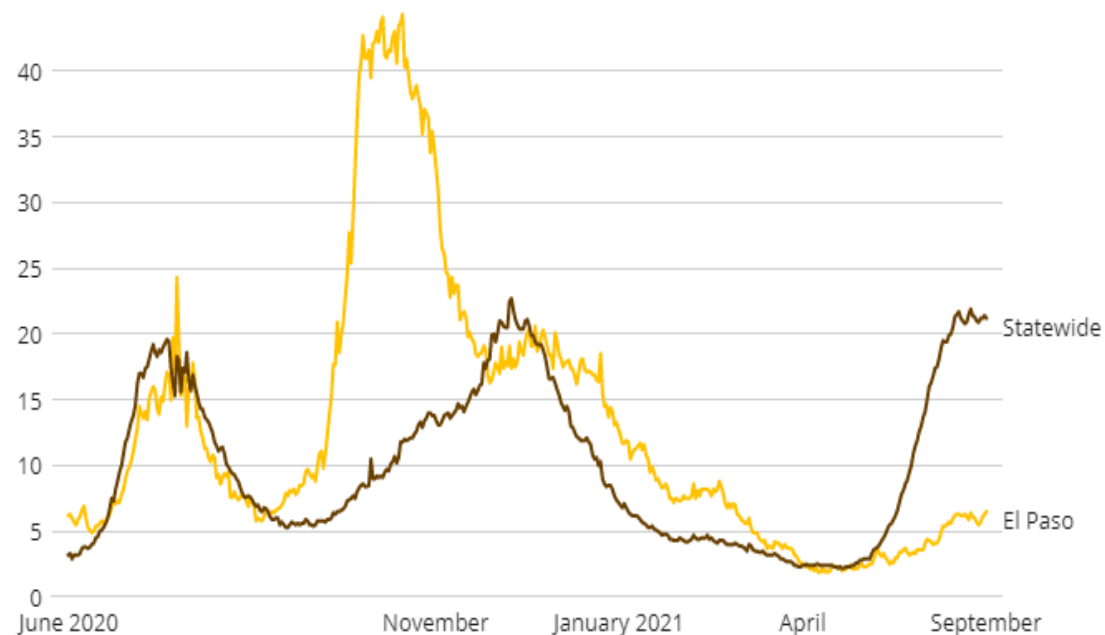
El Paso reaches 75% COVID vaccination rate; first Texas city to achieve herd immunity goal

Anthony Jackson El Paso Times

Published 4:08 p.m. MT Sept. 17, 2021 | Updated 9:57 a.m. MT Sept. 23, 2021

When COVID-19 hospitalizations peaked in El Paso and Texas

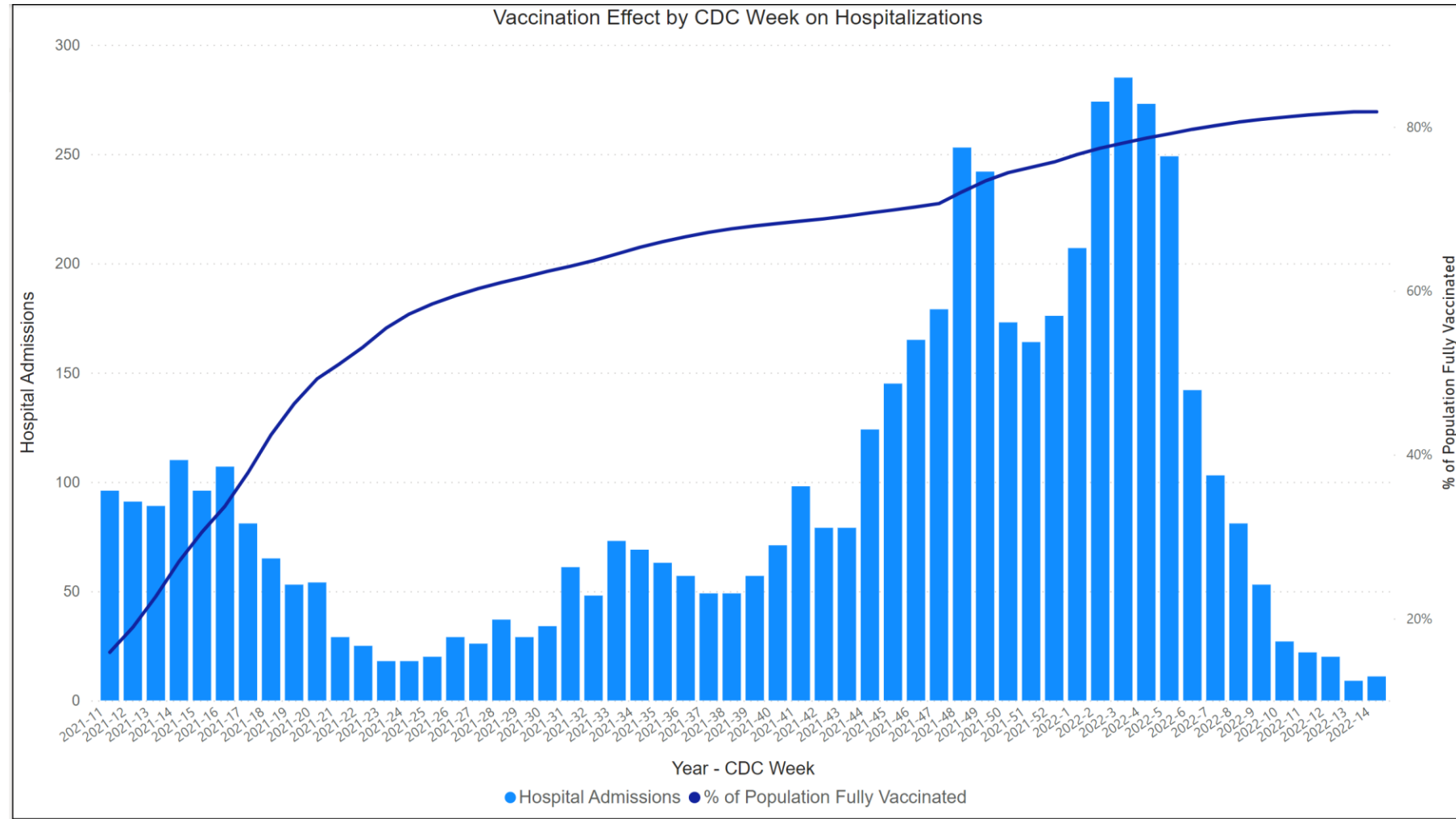
Percent of hospital beds occupied by COVID-19 patients



Source: [Department of State Health Services](#)

Credit: Darla Cameron

Impact on our Community



Results for our Community

- EP Strong website winner of Future Ready Award by the Center for Digital Government
- Rockefeller Foundation and CDC
 - Recognized as one of the best in the nation for vaccine roll out



Response + Recovery

Cross Functional Team

- Alignment and integration of response between Fire, Health, and Emergency Management
- Regional leadership on threats, risks and hazards
 - ISD, Hospitals, Governmental Entities, NGOs
- Data driven decision making
- Community Partnerships

Results for our Community

- Early interventions to protect our high-risk community - facilities that provide services to the elderly
- Contact tracing expansion
- Hospital surge, alternate care site and regional infusions center
- Isolation and quarantine
- Fatality management



Strategic Opportunities

- Mobile Integrated Healthcare Program
- Infrastructure Investment
- Community Needs Assessment
- Data Integration
- Mental Health Initiatives
- Continued Community Partnerships
- Long-term Financial Sustainability

Mobile Integrated Health Programs

- Preventive healthcare for high-risk patients
- Critical link from emergent care to social assistance
- Stroke Unit Partnership with University Medical Center
- “Frequent Flyer”



13



Investment Infrastructure

- New Laboratory – Expansion of services
 - Diabetes & HEP C Testing
 - Integration of diabetes testing in clinical setting
- Transitioning from COVID-19 Response Clinic to Community Clinics
 - 220 S. Stanton (corner of First and Stanton)
 - 7380 Remcon
 - 9566 Railroad
 - 9341 Alameda
- Proposed Phase 1 of the DPH relocation to Railroad
- Maintain a clinical presence in Medical Center of the Americas



Community Needs Assessment & Community Health Improvement Plan

Provides a comprehensive overview of the community's current health status, what factors are contributing to high health risks or poor health status and what community resources are available to improve health.

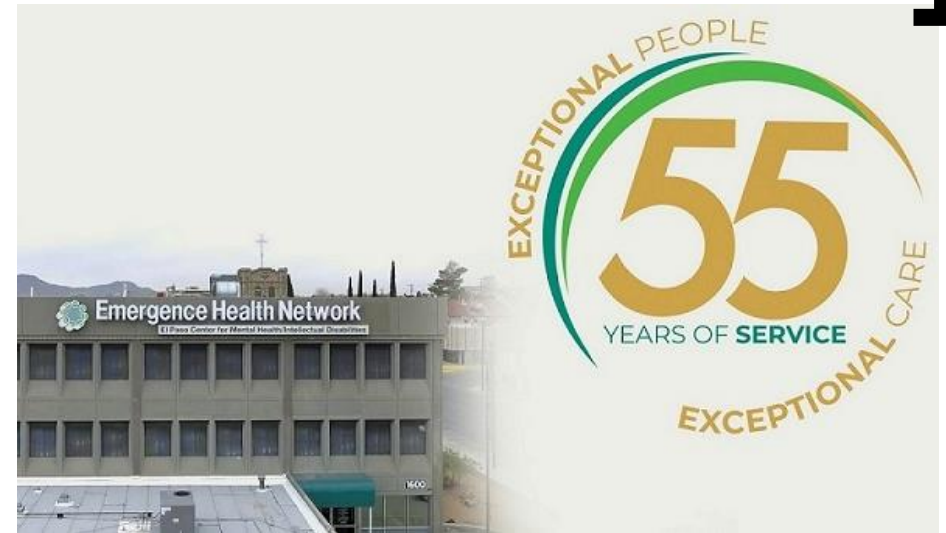
Considers the following factors:

- Community Demographics
- Health Status
- Morbidity and Mortality
- Socioeconomic Characteristics
- Quality of Life
- Community Resources
- Behavioral Factors
- Environment

Community Partnerships

Continue to leverage our community partners through Communities of Excellence:

- Emergence Healthcare Network
- Paso del Norte Health Foundation
- Universities
- School Districts
- Hospitals

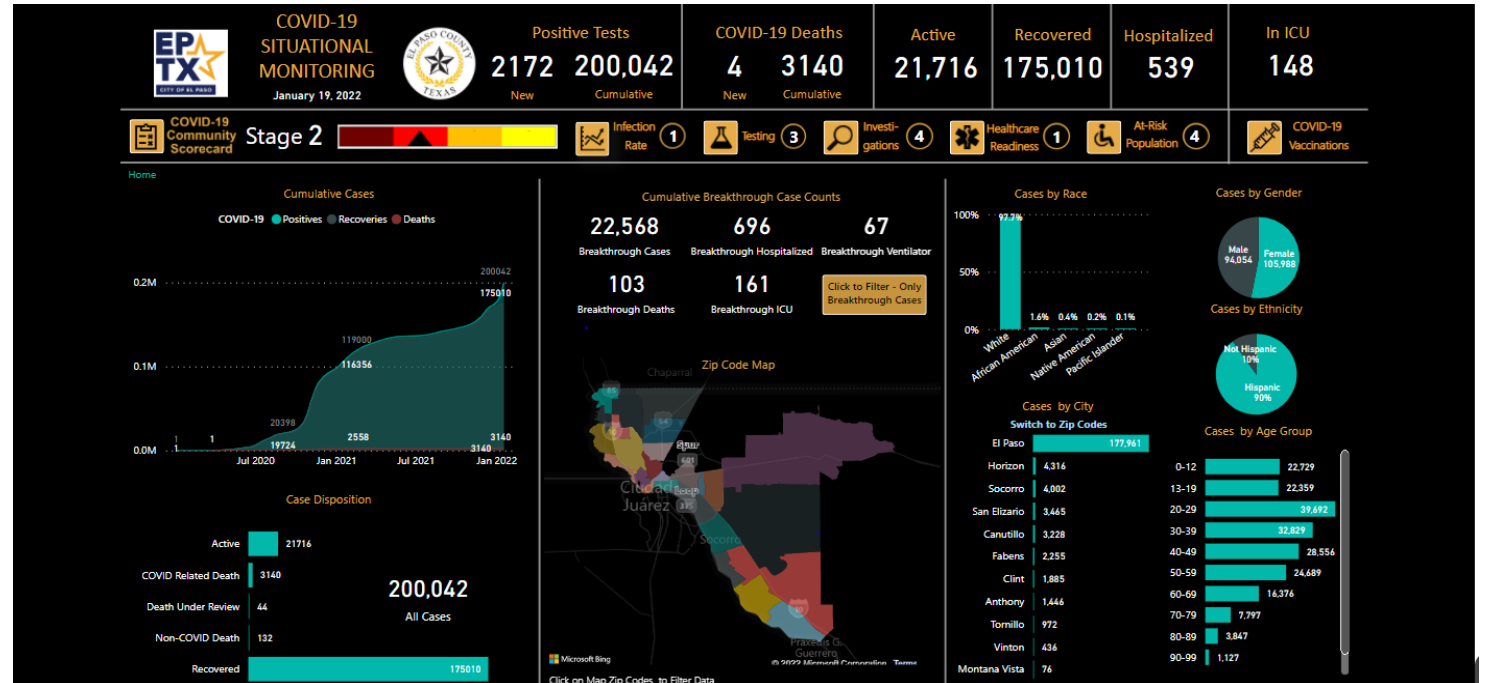


Working to promote health and prevent disease in the region



Healthcare Data Sharing

- Data Exchange
- Data Management
- Data Integration
- Interoperability – Call centers
- Capability



Mental Health Initiatives

911 Communications and Public Health

- Embed Mental Healthcare Professionals
- Suicide Crisis Line (988)
- MIH connecting ENH with those with mental health concerns
- ET3 Program includes a mental health component for Medicare Part B patients to be transported to EHN facilities
- Training Mental Health First Aid

Financial and Staffing Investment

19

In addition to CARES funding and ARPA, our Department of Public Health continues to expand.



71 Additional
Positions



4 New
Buildings



\$17.7M
New Grant
Funding



Community Health

- More sustainable and healthy community
- Increased accessibility to vaccinations and other preventative services
- Integrated approach to disease and injury prevention
- Response ready and resilient community for disasters and emergencies



Mission

Deliver exceptional services to support a high quality of life and place for our community



Vision

Develop a vibrant regional economy, safe and beautiful neighborhoods and exceptional recreational, cultural and educational opportunities powered by a high performing government



Values

Integrity, Respect, Excellence,
Accountability, People



Misión

Brindar servicios excepcionales para respaldar una vida y un lugar de alta calidad para nuestra comunidad



Visión

Desarrollar una economía regional vibrante, vecindarios seguros y hermosos y oportunidades recreativas, culturales y educativas excepcionales impulsadas por un gobierno de alto desempeño



Valores

Integridad, Respeto, Excelencia, Responsabilidad, Personas