



Community Vulnerability

A Path Toward Recovery for Our Community

community + human development

Advance Equity

Reduce Poverty

Build Sustainability



Civic Empowerment

- Equity + Access
- Climate Action
- Volunteerism + Engagement

Human Services

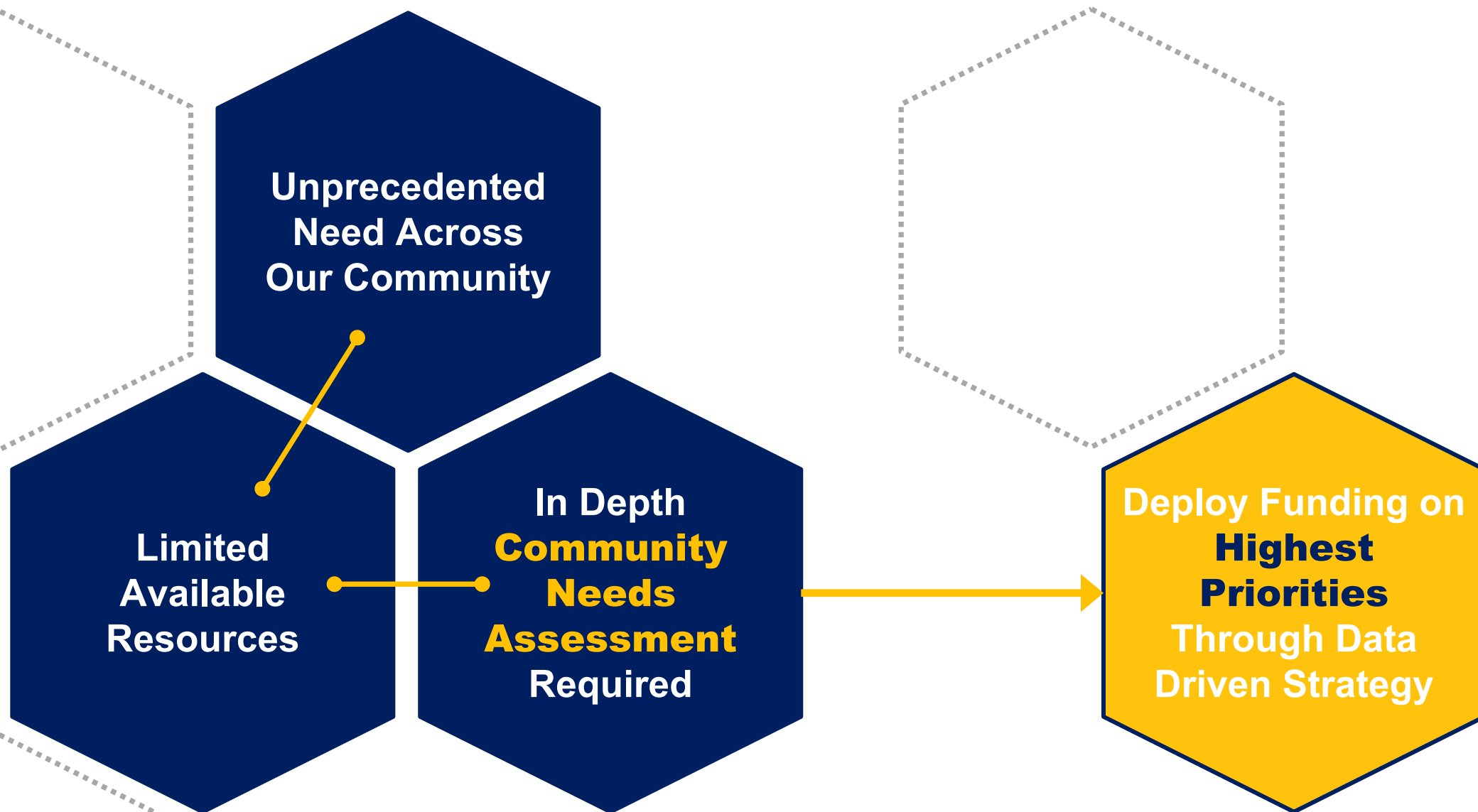
- Homelessness
- Health+ Wellbeing
- Recreation + Lifestyle

Neighborhood Development

- Housing
- Community Revitalization
- Quality of Life

Our responsibility is to serve as the catalyst for community partnerships, collaboration + change ensuring **equity, resilience + sustainability** for the most vulnerable El Pasoans by giving voice to the underrepresented, supporting a strong system of human services & investing in El Paso homes, families + neighborhoods.





Bottom Line Up Front

3

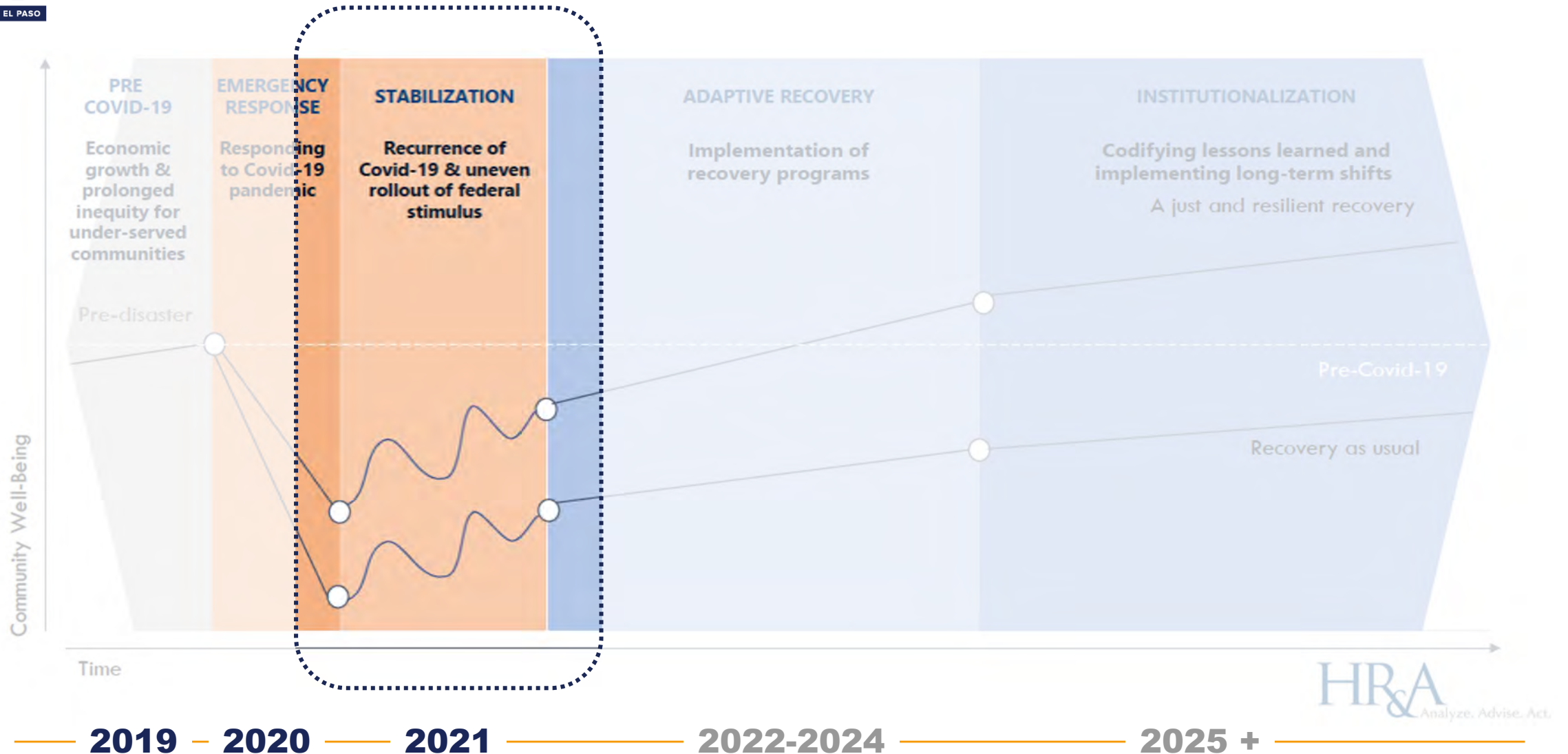
A hiker with a backpack and a hat stands on a rocky mountain peak, looking out over a vast cityscape. The image is dark and moody, with a blue and orange color palette. The hiker is positioned on the left side of the frame, and the city is visible in the background under a cloudy sky.

In Retrospect

The Road We Have Traveled *Together*



An Inclusive + Resilient Recovery



Needs + Impact Assessment Process



What we have achieved *together*....

26+ nonprofit partners

8 distinct federal funding sources

96+ individual program agreements

\$77m+ dedicated to community vulnerability

1,161 families served

\$1.9m Funds Invested

childcare

925K Households Served

\$3.7m Funds Invested

hunger relief

32,030 people assisted

\$15.4m Funds Invested

housing + homeless

58,260 Monthly payments made

\$10m Funds Invested

utility assistance

39,586 Monthly payments made

\$31m Funds Invested

rental assistance

2,700+ Calls Received

\$1m Funds Invested

navigation services

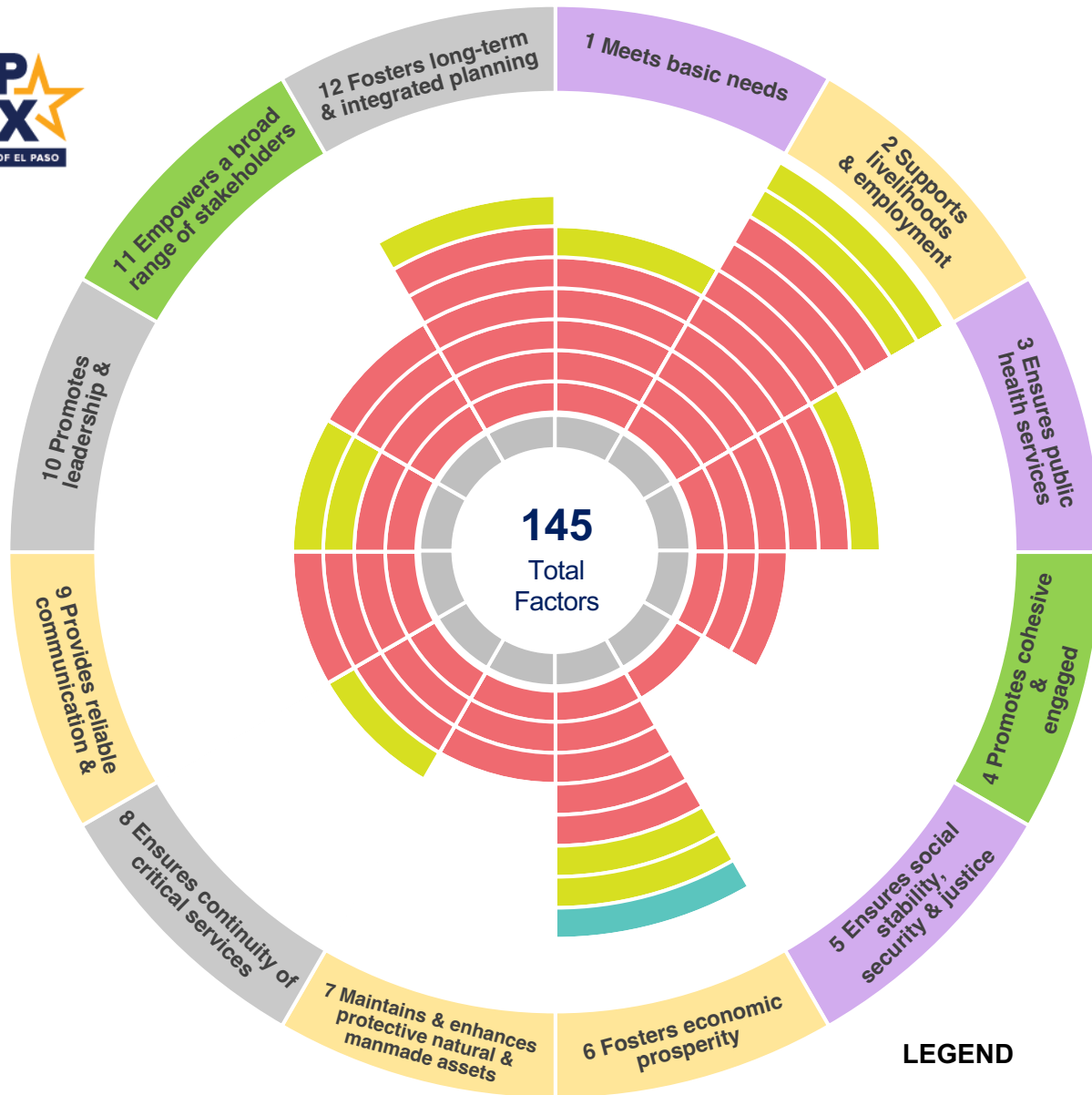


2020 Community Vulnerability Assessment (*crisis condition*)



Key Takeaways:

1. Primary focus on **meeting basic needs and ensuring public health** of our people in crisis
2. **Quick and aligned emergency response** by public service agencies, led by the City of El Paso
3. **Strength of collaborative partnerships** leveraged toward response mechanisms.



Top 3 Areas:

1. Support Livelihood + Employment
2. Fosters Long Term + Integrated Planning
3. Fosters Economic Prosperity

Key Takeaways:

1. Focus has shifted from response and relief toward **recovery**
2. Need for broad and dynamic **alignment of priorities and resources** across the community
3. Basic Needs, Livelihood and Economic Prosperity are **inextricably linked priorities.**

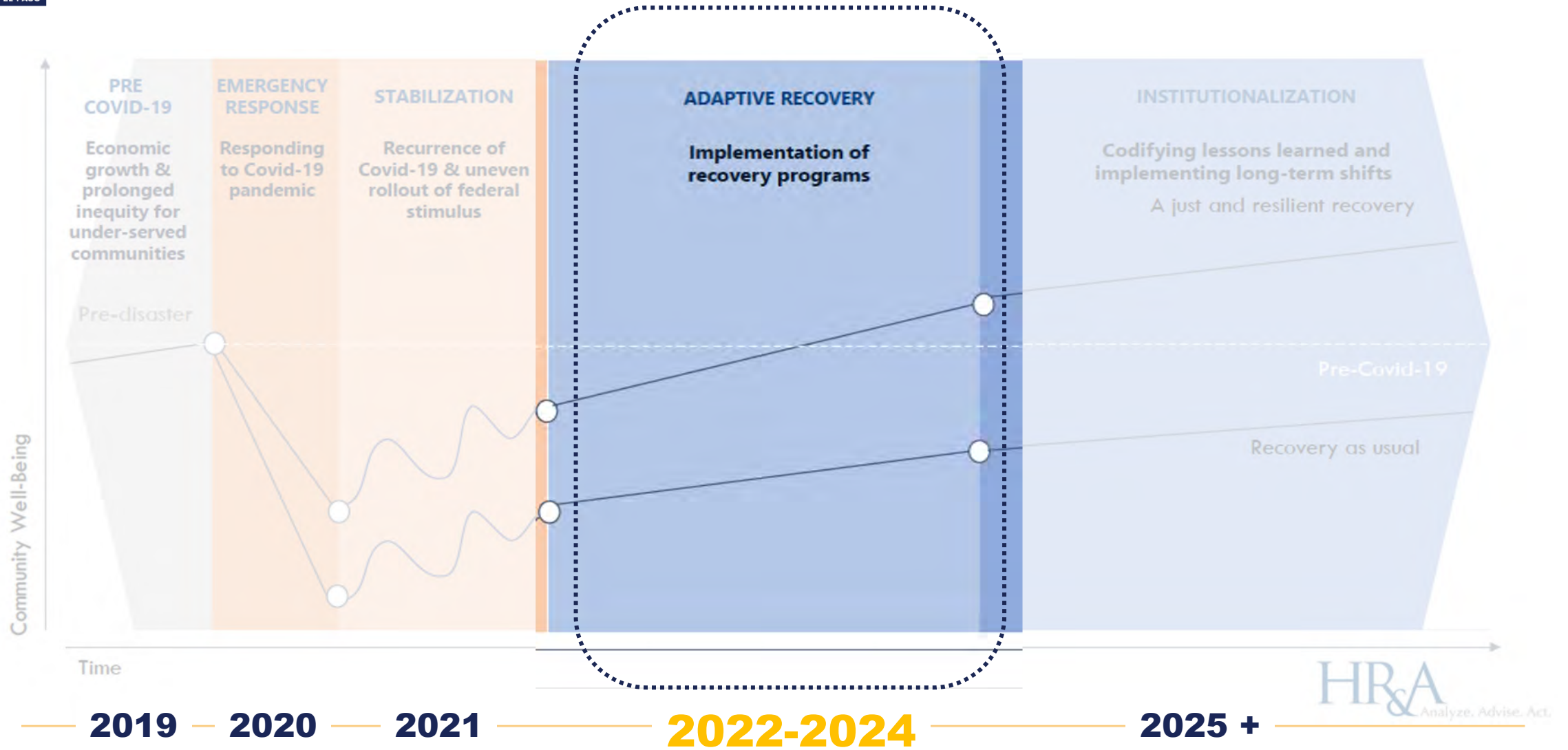
A person with a backpack is standing on a rocky mountain peak, looking out over a city valley. The image is dark and moody, with a blue sky and clouds in the background.

2022 and Beyond

Strategies for an *Inclusive and Resilient* Future



An Inclusive + Resilient Recovery



Needs Assessment + Policy Development





Council Action Requested

Discussion and action on a resolution to approve an amendment to the City's 2020-2021 (46th Year) Annual Action Plan for the Community Development Block Grant Entitlement (CDBG-EN) to:

- Reallocate the Community Kitchen and Teaching Kitchen project (\$1,557,540); and
- Add \$1,557,540 into 46th Year CDBG funds