



Trailhead Dedication To City of El Paso



PROPOSED TRAILHEADS

1 Lost Puppy Trailhead

Amenities Include:

- 10 parking spots (1HC)
- 1 Ramada (20x25)
- 3 picnic tables (1 ADA)
- 2 benches
- Bike Racks (4), Bike Repair Stand, Bike Pump
- Water Station
- Trash and Dog Waste Receptacles
- Trail Sign
- Entry Monument

2 High Plains View Trailhead

Amenities Include:

- 5 parking spots (1 HC)
- 1 Ramada (20x20) w ADA picnic table
- 1 bench
- Bike rack, Bike Repair Stand with Bike Pump
- Water Station
- Trash and Dog Waste Receptacles
- Trail Sign
- Stairs/ADA Ramp accessibility to trail network
- Entry Monument

3 Lanoria Point Trailhead

Amenities Include:

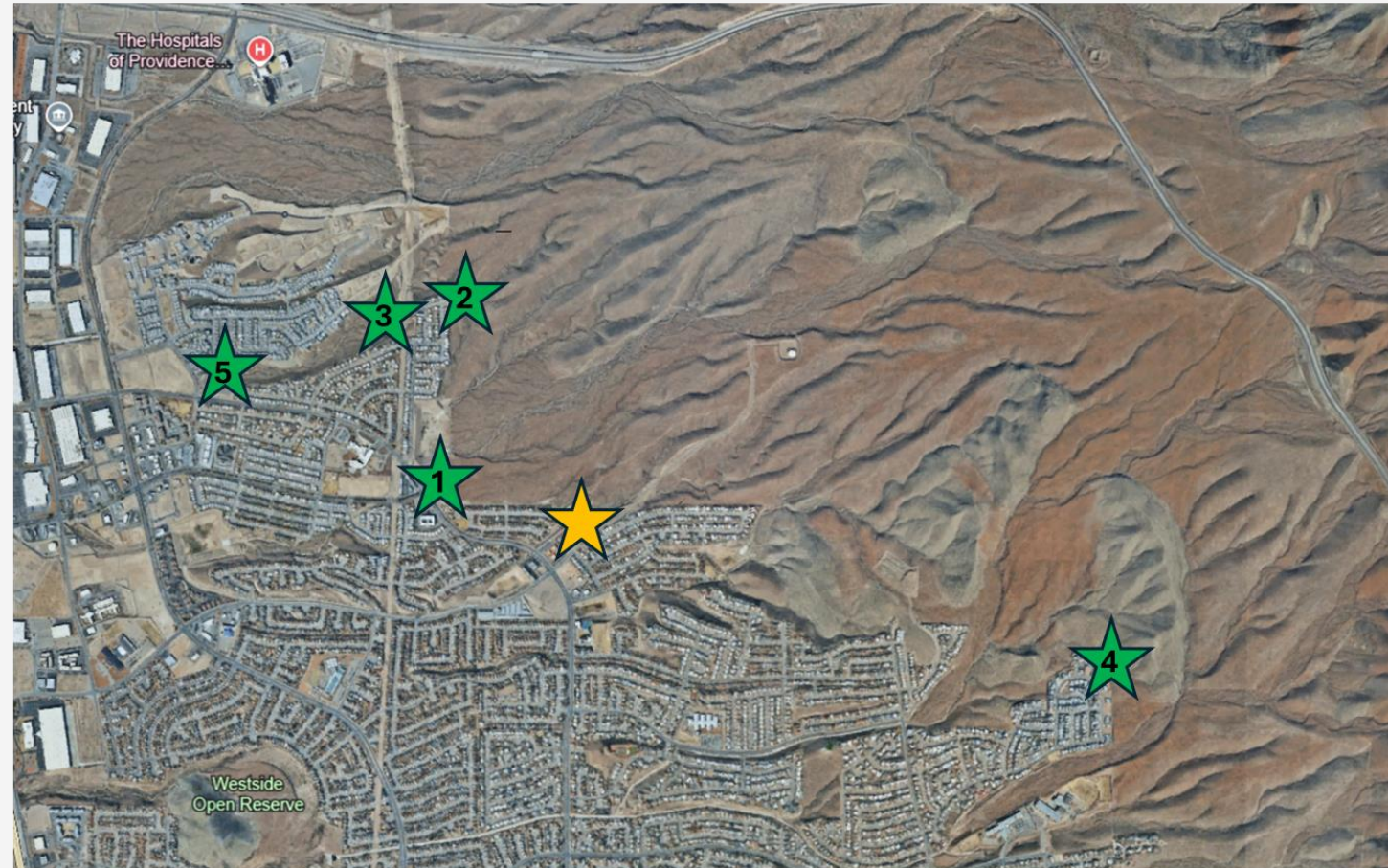
- 5 parking spots (1 HC)
- Bike Service Station
- Water Station
- Trash Receptacle
- Stairs/ADA Ramp accessibility to trail network
- Trail Sign


4 Granite Peak Trailhead

Amenities Include:

- Bike Service Station
- Water Station
- Trail Sign

5 Italian Village



 Current Lost Dog Trailhead

MARCH 3 SITE VISIT WITH DISTRICT 1 REPRESENTATIVE AND CITY STAFF

- Mayor Pro Tempore Chavez coordinated a site visit on March 3 to all five proposed trailhead locations
- Participants included:
 - City of El Paso Parks and Recreation Department
 - City of El Paso Museum and Cultural Affairs Department
 - Representatives of Hunt Communities
- Primary purpose of the site visits was to visit all five proposed trailheads and consider opportunities for public art.
 - Determined the Lost Puppy Trailhead is currently best suited for a Public Art Display at this time



NEXT STEPS & PROJECTED TIMELINE

- **10 April 2026:** Submittal of Subdivision plats for Lost Puppy, High Plains, Lanoria Point & Granite Peak
- **End of May 2026:** City Plan Commission (CPC) approval anticipated
- **October 2026:** Plan and Approval by City of El Paso (Planning & Inspections) anticipated
- **January 2027:** Anticipated to start construction
 - Likely phased construction with all four trailheads complete by end of 2028