



Public Safety:

City Watch Expansion

Project Update

A/Chief Humberto Talamantes

Approved by City Council – May 2022

Public Safety: City Watch Expansion

Enhance Public Safety for Community

Improve First responders efficiency & safety

Augment Investigative Capabilities

Maximize situational awareness to maintain security of critical areas & infrastructure

\$7M

City Watch Expansion

- **City Watch**
 - A City of El Paso initiative that allows EPPD access to public and private camera systems and recordings including schools, hospitals, and shopping centers.
- **City Watch Expansion**
 - The City Watch Expansion is the main focus of this presentation. It builds on the strengths of the City Watch initiative with the addition of security camera technology and human capital.
- **Fusion Center**
 - The Multi-Agency Tactical Regional Information eXchange (MATRIX) is an all-threats and all-hazards Fusion center; it is designed to work in partnership with state, local and national stakeholders to address crime, public hazards, and terrorism. The MATRIX serves the public safety agencies of El Paso and Dona Ana County, NM and will assist any law enforcement agency in the United States with any legitimate criminal investigation.

Deliverables and Equipment

We will augment public safety in critical areas throughout the city by increasing our:

- **Security Systems**

- Fixed Security Platforms
- Mobile Security Camera Platform(s)
- Unmanned Aerial System

- **Necessary equipment**

- Recording Servers
- Internet Infrastructure

- **Hiring of police support specialist to manage and monitor these systems**

City Watch Expansion TEAM

EPPD Fusion

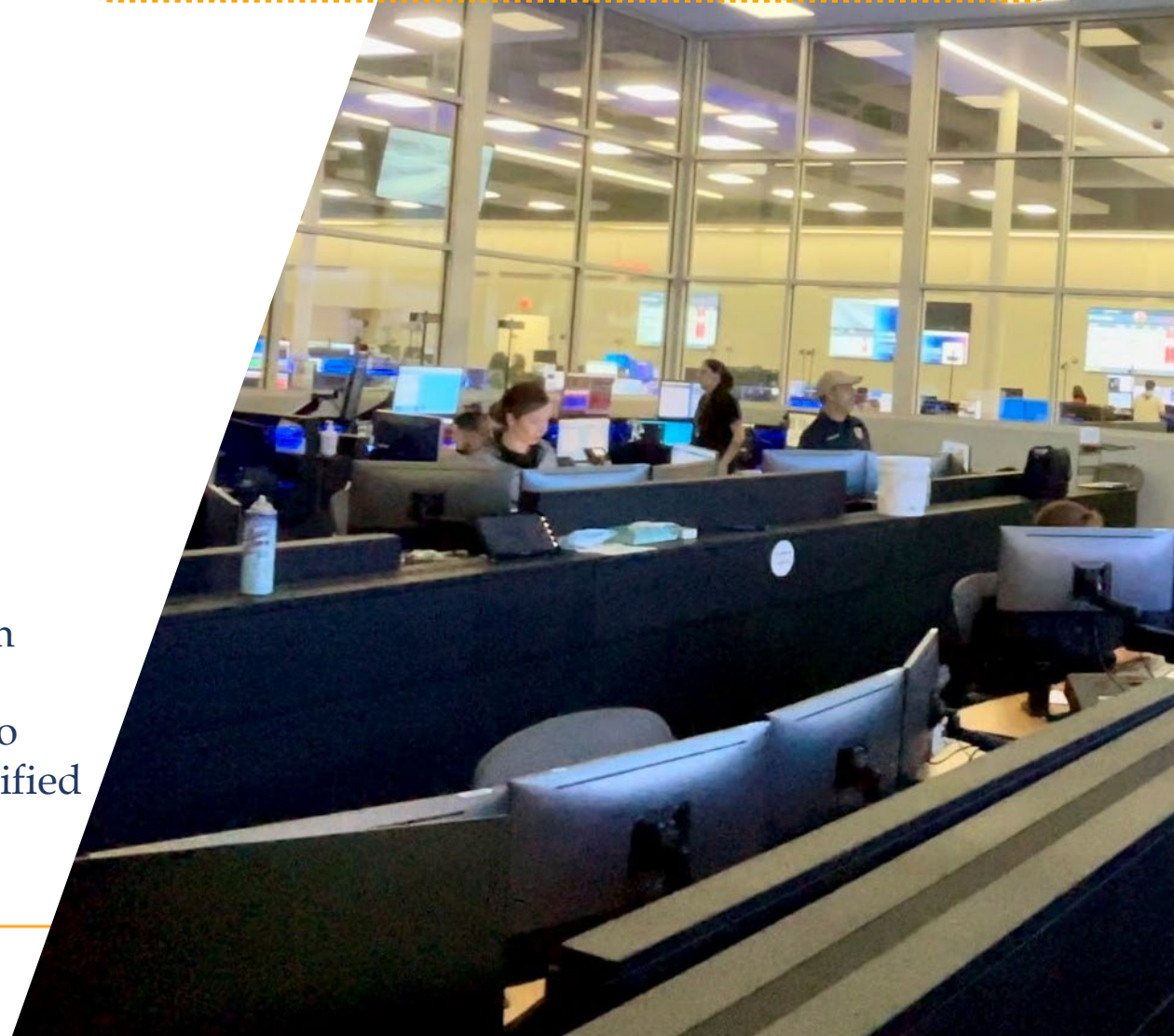
City of El Paso IT

El Paso Parks and Recreation

Street and Maintenance

Budget and Purchasing

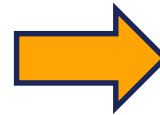
The City Watch Expansion Project Team was composed from various City of El Paso departments. This approach brought together SMEs from across the city under the unified effort to enhance our city's public safety. The team strategically identified public areas and city facilities to benefit from security enhancements.



Site Location - A Data Driven Approach

Methods and Considerations

- The TEAM used a **Data Driven Approach**, gathering and assessing vandalism, disturbances, and crime at public venues & city public facilities.
- Selection was based on the number of reported incidents. Consideration was also given to highly visited public venues to reduce threats and risks. Voice of customer.



Results

44 Priority Venues were selected. Over 300 cameras will be installed throughout these facility types

- Senior Citizen Centers
- Entertainment Districts
- City Parks/Skate Parks
- Sport Park Complexes
- City Recreational Centers
- Sun Metro Locations
- Public Safety Facilities (Camera Additions Only)

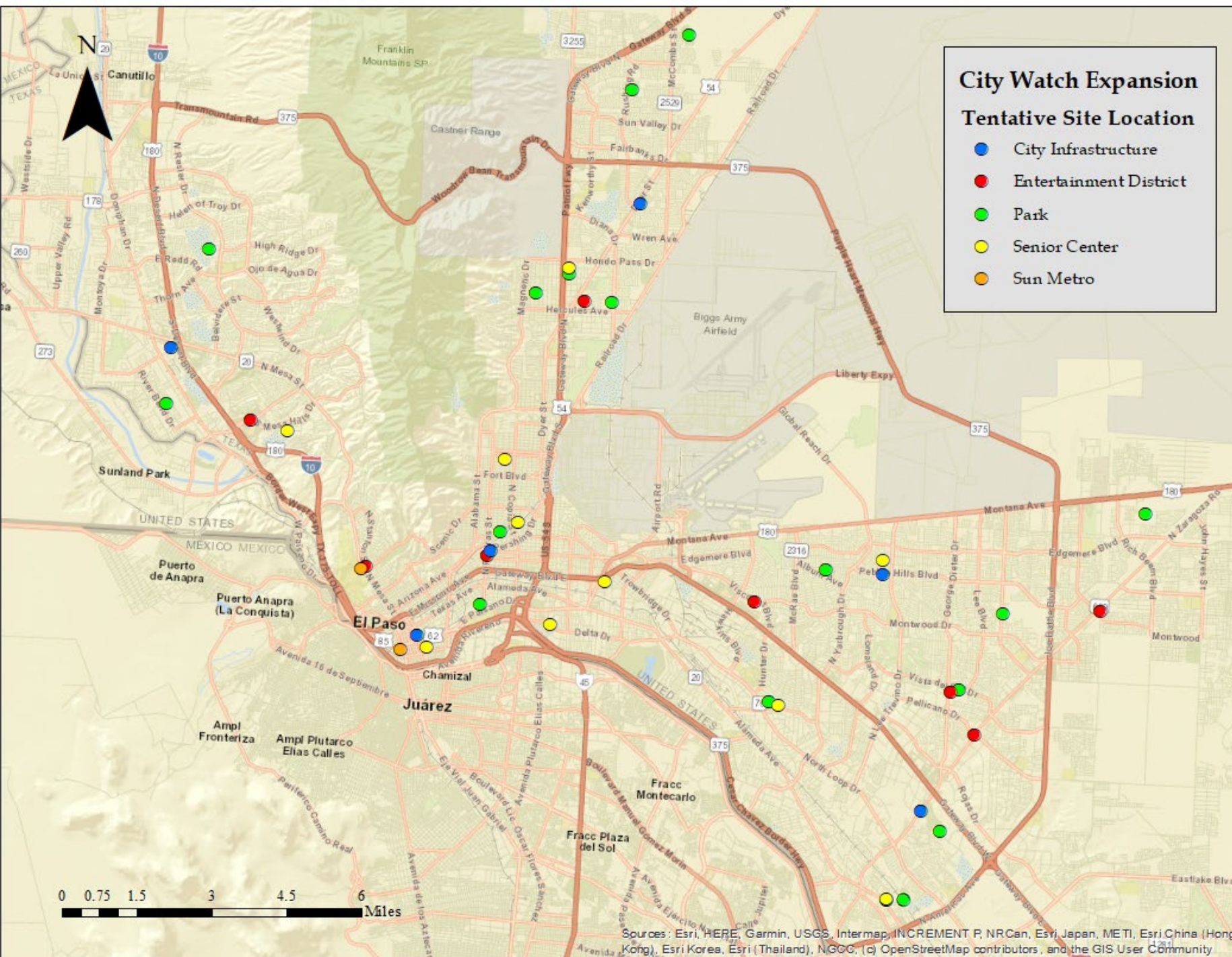
City Watch Expansion

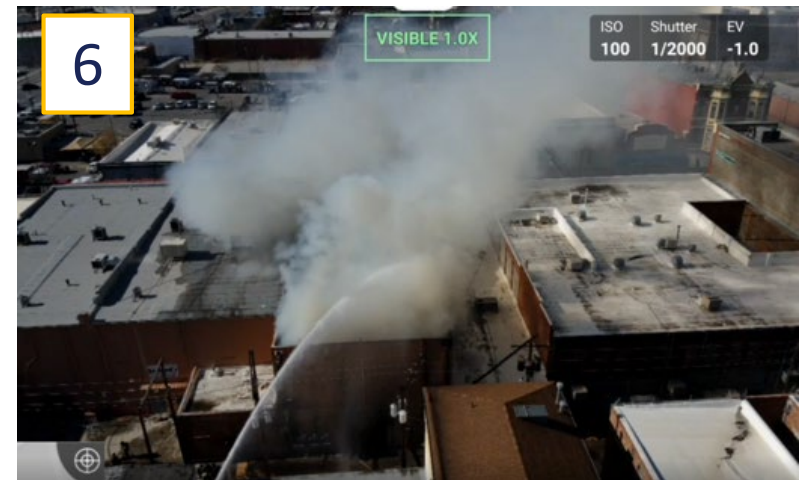
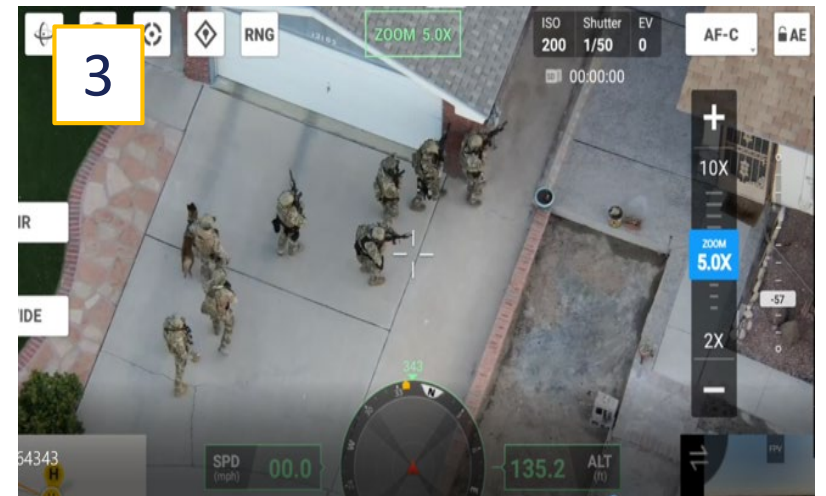
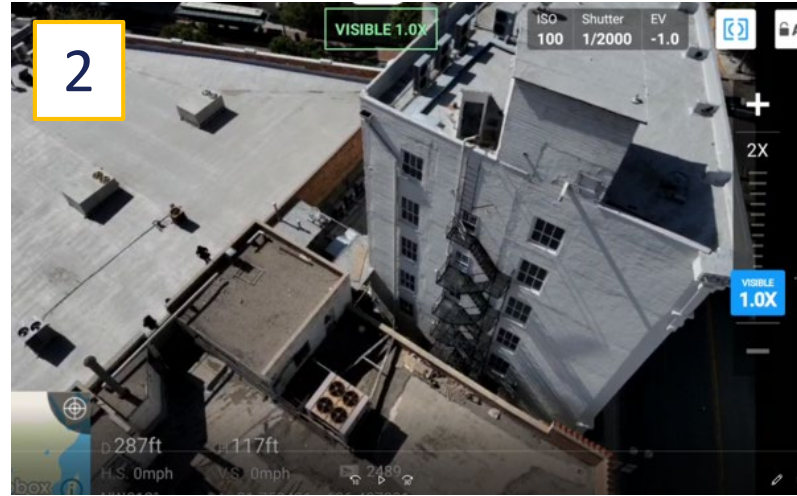
Tentative Site Location

- City Infrastructure
- Entertainment District
- Park
- Senior Center
- Sun Metro

• City Watch Proposed Coverage Areas

This map includes our tentative site selection. As noted earlier, the City Watch Expansion focuses on building public safety in publicly shared spaces around the City of El Paso. This includes entertainment districts, various types of parks/permanent facilities, Sun Metro locations, and senior citizen centers.







Security Camera Platforms

Dynamic fluctuation in crime trends & patterns require a wide range of technology to effectively monitor areas associated with criminal activity, high profile crimes, and to support investigations.

These platforms maximize public safety & situational awareness for First Responders.

The platforms selected allow for use at any city venue regardless of connectivity infrastructure.

- **Fixed Security Cameras**
 - Parks, Recreation and Senior Citizen Centers, City Facilities
- **Pole Camera Systems**
 - Rapid-Deployment, Wide Application Versatility
- **Mobile Security Systems**
 - Mobile Security Camera Units (Sportsplex Venues) City Sponsored events

Police Support Service Specialist

Police specialist are needed to manage the existing workload while addressing the growth associated with the City Watch Expansion project. This addition will allow for consistent monitoring of cameras at high activity/visited venues, promoting public safety and situational awareness for 1st Responders in the field

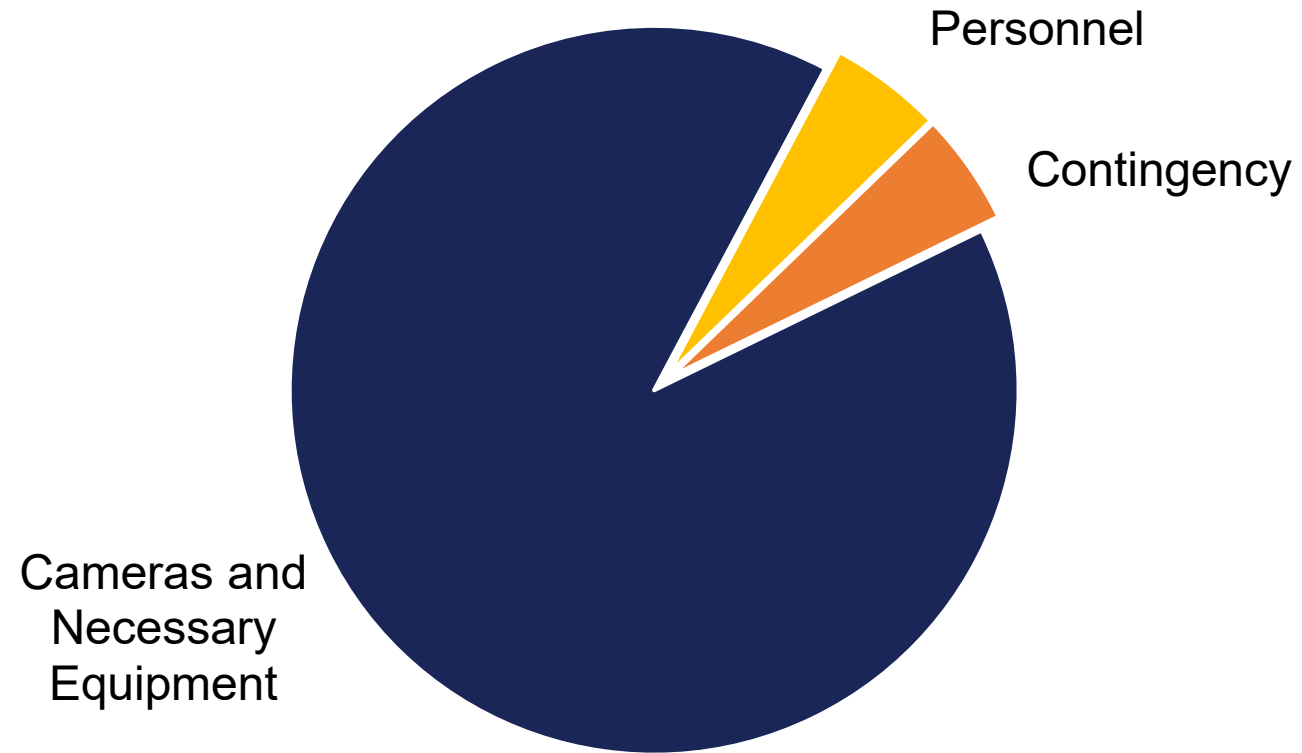
Primary Contributions to the City Watch Program

Capture Critical Evidence

Monitor City Cameras

Report Real-Time Situational Awareness

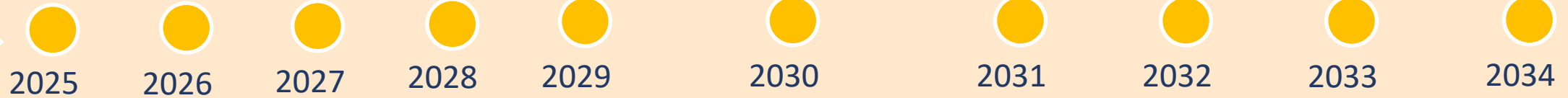
City Watch Expansion Project FUND Distribution



Recurring Costs

Operational Expenses

- Licenses / Maintenance for Cameras - \$185k
- Internet Service Provider - \$20k
- Utilities - \$5k
- **Total - \$210k Annually**



Replacement Expenses

- Recording Server Lifecycle - \$1.3m
 - Internet Hardware - \$500k
 - **Total – \$1.8m Year 6**
- Camera Lifecycle - \$1.1m
 - Solar Power Units - \$100k
 - **Total – \$1.2m Year 7-10**



Project Timeline

Phase 1

September – December 2022

- Cross-Functional Team Convened
- Plan Development and Site Visits
- Data, Conclusions, and Budget

Phase 3

April 2023

- Finalize Install Plan
- Group 1 Procurement
- Group 2 & 3 Planning

Phase 5

October – February 2024

- Group 2 & 3 Install
- Group 4 & 5 Procurement
- Group 6 Planning

Phase 6

July – October 2024

- Group 6 Install
- **Project Closing**

Phase 2

January – March 2023

- Finalized Site Selection
- Pre-Installation Logistics Determined
- SBR Reviews

Phase 4

May – October 2023

- Group 1 Install
- Group 2 & 3 Procurement
- Group 4 & 5 Planning

Phase 5

March – June 2024

- Group 4 & 5 Install
- Group 6 Procurement



TO PROTECT...



...AND SERVE



Questions?

Mission

Deliver exceptional services to support a high quality of life and place for our community

Values

Integrity, **R**espect, **E**xcellence,
Accountability, **P**eople

Vision

Develop a vibrant regional economy, safe and beautiful neighborhoods and exceptional recreational, cultural and educational opportunities powered by a high performing government