



**EP  
TX**

CITY OF EL PASO

# Street Pavement Condition Index Study

October 11, 2022





# TABLE OF CONTENTS

1. Street Inventory
2. How Streets Deteriorate
3. Historic Investment
4. PCI Results
5. PCI Website
6. Next Steps





## 7: Enhance and Sustain El Paso's Infrastructure Network



## Strategic Plan Alignment





# City of El Paso Streets Inventory



**6,117 streets**

5,769 residential streets  
188 arterial streets  
160 collector streets



**Over 2,400 centerline miles**



**\$3.6 Billion Asset**

# CONTRIBUTING FACTORS TO STREET DETERIORATION

- Decades of minimal and inconsistent investment in street resurfacing and street reconstruction
- Damage from storm water runoff and drainage systems – water penetrating pavement deteriorates the road base and subgrade
- Impact of permitted and illegal pavement cuts
- Increase in development, leading to larger traffic volumes than they were constructed to support
- Urban sprawl and development

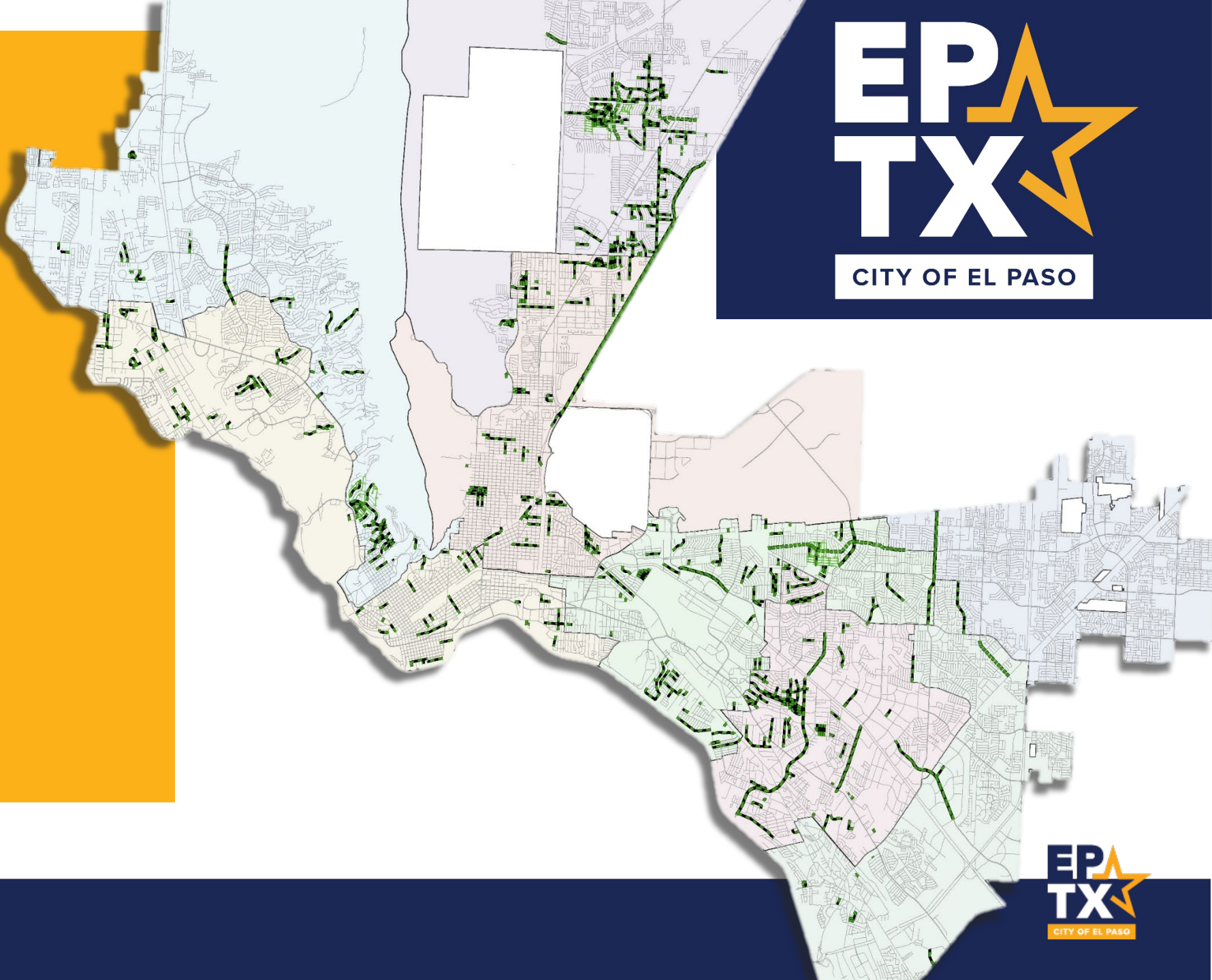




**483**  
**Resurfaced**  
**Streets**  
(2013 - Present)



CITY OF EL PASO



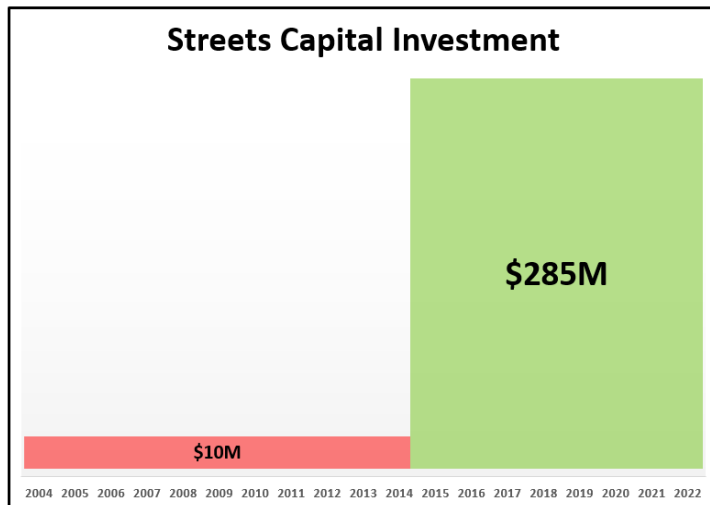
CITY OF EL PASO

# Alignment & Integration

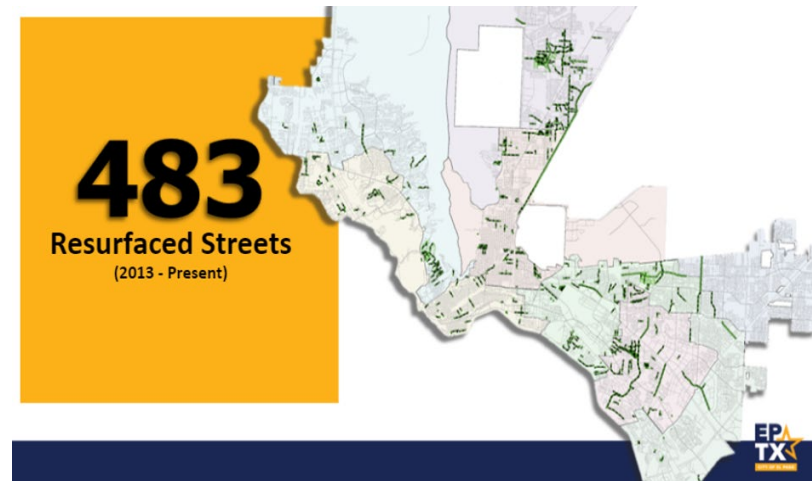


CITY OF EL PASO

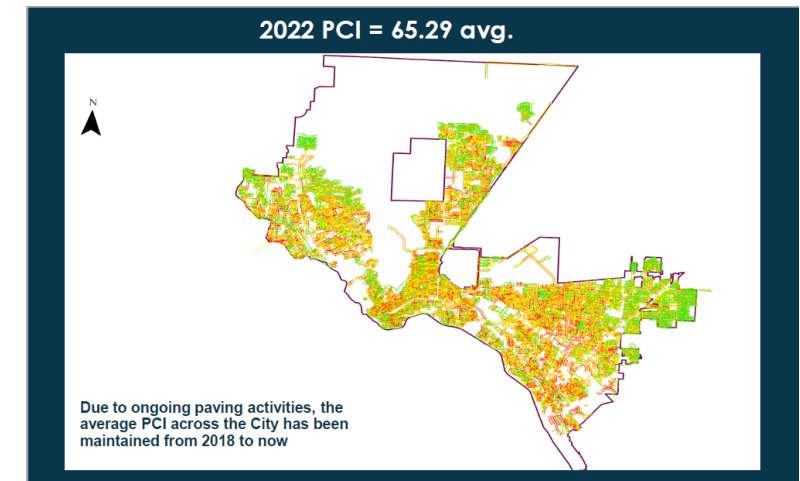
### Streets Capital Investment Funding



### Resurfaced Streets 2013 - Present



### 2022 Pavement Condition Index (PCI)



2008 Avg. PCI = 75.54

2018 Avg. PCI = 65.42

2022 Avg. PCI = 65.29

Investment

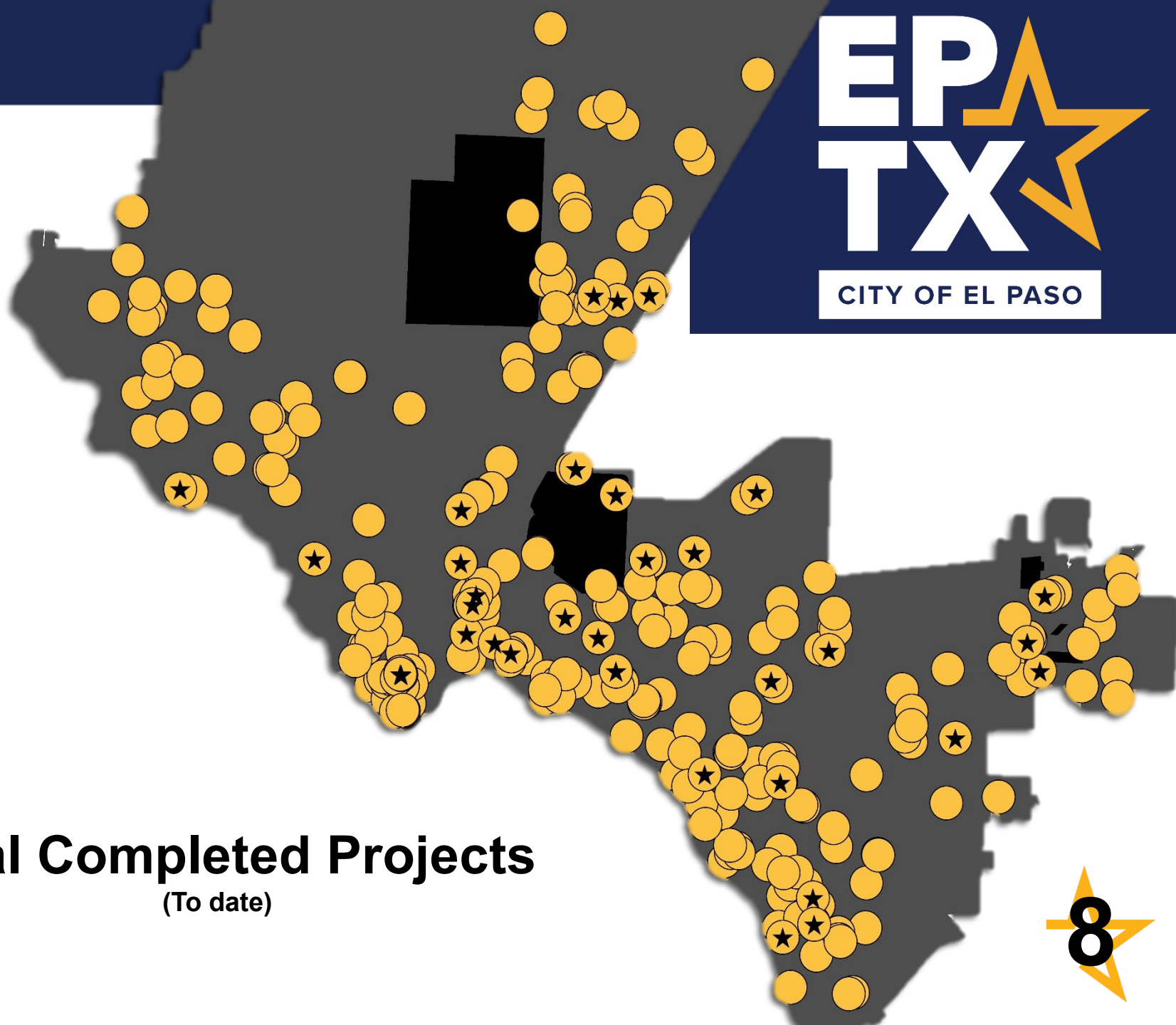
Impact

Output



# Completed Projects Map

★ FY 2022 Completed Projects



# 461

## Total Completed Projects

(To date)







**178 +**  
Park and  
Recreation Improvements

**63 +**  
Facility  
Improvements



**173 +**  
Transportation  
Improvements



**25 +**  
Airport  
Improvements



**22 +**  
Public Safety  
Improvements

# PCI – What is it?



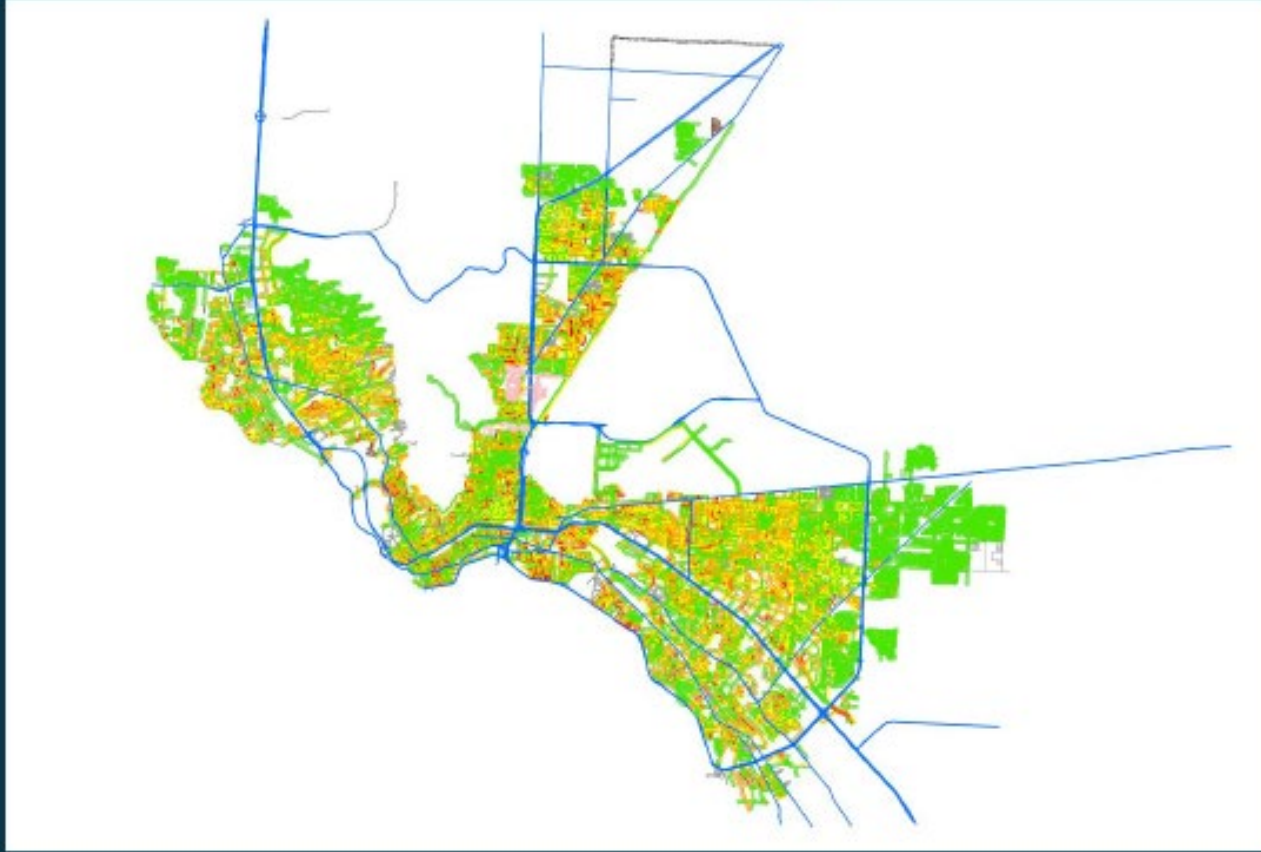
## PAVEMENT CONDITION INDEX

- Pavement Condition Index (PCI) is data used to assess the general condition of pavement.
- It is a numerical indicator that rates the general condition of the surface pavement of a road from 0-100.
  - New streets = 100; very poor < 30
  - *Currently at average 65*
- The data can be used as a tool for decision-making on infrastructure improvements.
- Provides forecasting, which can assist with planning future improvements.
- The City reevaluates pavement through a PCI study every 4-5 years in order to
  - Acquire relevant data about the present-day conditions, to acquire data about the deterioration of the network over time, and to utilize as a primary tool in making capital project decisions on street right of way.



# 2008 PCI PAVEMENT CONDITION INDEX

2008 PCI = 75.54 avg.

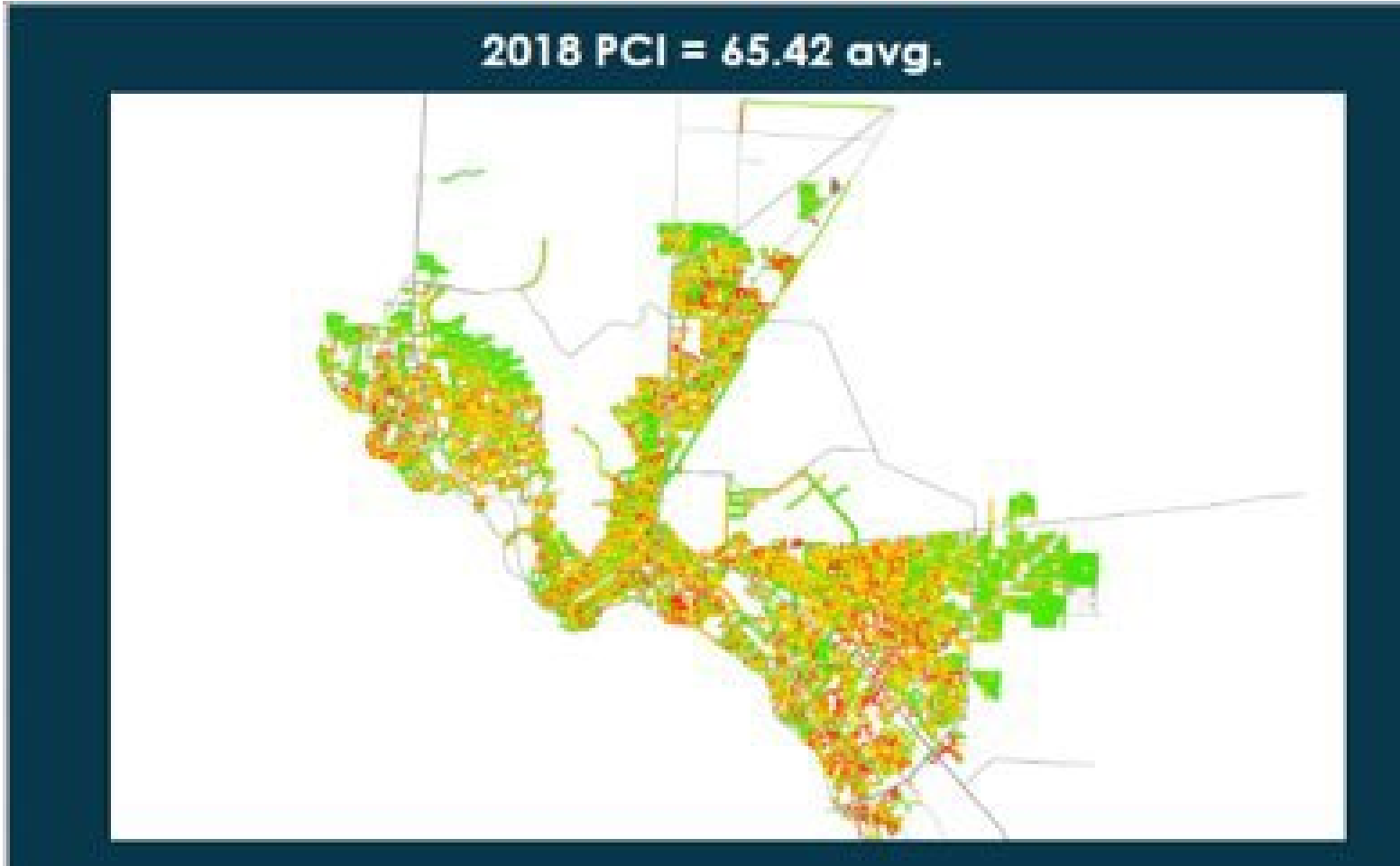


CITY OF EL PASO

PCI range	Class
85-100	Good
70-85	Satisfactory
55-70	Fair
40-55	Poor
25-40	Very Poor
10-25	Serious
0-10	Failed



# 2018 PCI PAVEMENT CONDITION INDEX

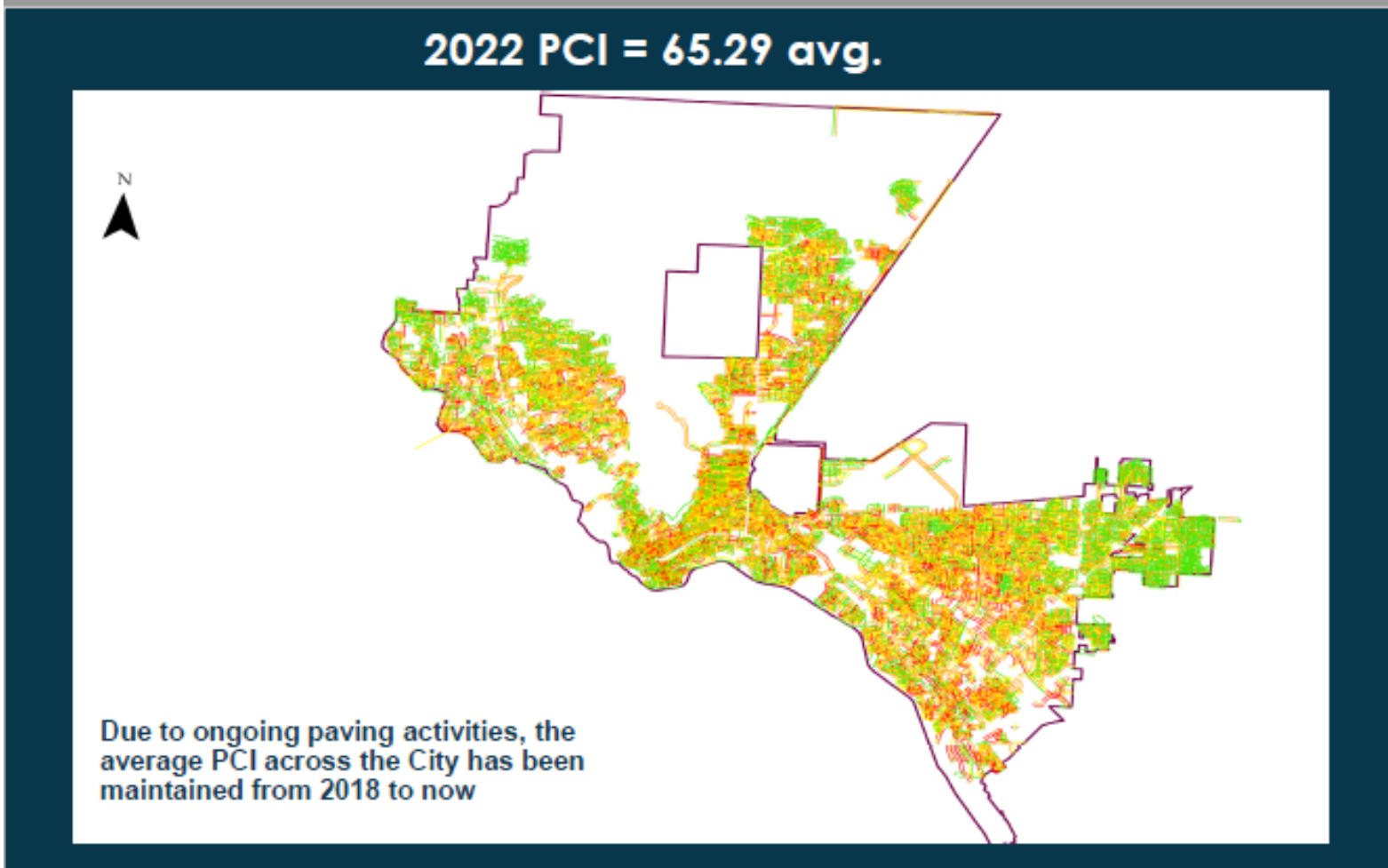


CITY OF EL PASO

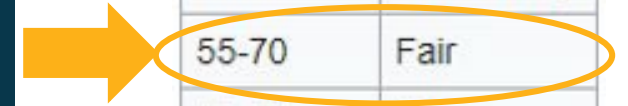
PCI range	Class
85-100	Good
70-85	Satisfactory
55-70	Fair
40-55	Poor
25-40	Very Poor
10-25	Serious
0-10	Failed



# 2022 PCI PAVEMENT CONDITION INDEX



PCI range	Class
85-100	Good
70-85	Satisfactory
55-70	Fair
40-55	Poor
25-40	Very Poor
10-25	Serious
0-10	Failed



# El Paso PCI's



CITY OF EL PASO

PCI Range	Condition Description	2022 Data % of Network	2018 Data % of Network	2008 Data % of Network
91-100	Excellent	11.57 %	27.66 %	26.75 %
81-90	Very Good	17.52 %	14.16 %	22.72 %
71-80	Good	16.16 %	15.48 %	17.06 %
61-70	Fair	12.21 %	10.31 %	17.59 %
43-60	Marginal	25.08 %	19.56 %	10.46 %
21-42	Poor	17.41 %	10.06 %	5.00 %
0-20	Very Poor	0.05 %	2.77 %	0.42 %
<b>COEP PCI Average</b>		<b>65.29</b>	<b>65.42</b>	<b>75.54</b>
<b>Percentage Good or Higher</b>		<b>45.25 %</b>	<b>57.30 %</b>	<b>66.5 %</b>
<b>Percentage Fair or Lower</b>		<b>54.75 %</b>	<b>42.70 %</b>	<b>33.5 %</b>

**Presently more than 50% of streets in fair to very poor condition**





# PCI Study 2022 –

## Website available for public use to view your Streets PCI



View PCI Map

The screenshot shows the '2022 Pavement Condition Index' website interface. At the top, it says 'Streets and Maintenance'. A search bar contains 'n. campbell, el paso, tx'. The map displays various streets color-coded by their PCI score. A popup window for 'N CAMPBELL ST' shows the following data:

Resurfacing PCI 2022	
SEGMENT NAME	N CAMPBELL ST
DISTRICT	8
STREET CLASS	MINOR
PCI	36

A legend on the right side of the map, titled 'PCI\_MainMap10\_8\_1', defines the color coding for 'Resurfacing PCI 2022':

- EXCELLENT (91 - 100)
- VERY GOOD (81 - 90)
- GOOD (71 - 80)
- FAIR (61 - 70)
- MARGINAL (43 - 60)
- POOR (21 - 42)
- VERY POOR (0 - 20)

Major Streets are shown in grey.

# Street Pavement Continues to be a high priority for our Community

PCI Study Completed – Website available for public use

Public Information Campaign Underway for the November 2022 Community Progress Bond

Next Funding Available (recommendation for streets will be presented first quarter in 2023 based on criteria from slide 23)

- FY 24/25- \$14 M Residential (\$7M Pay Go per year)
- FY 24/25 - \$6 M Collector (\$3M Pay Go per year)

If Bond Passes on November 8, 2022:

- FY 24 /25 \$7 M residential (\$3.5 M per year) increased total of \$10.5M
- Rollout of the top 50 Arterial pavement upgrades



# Ongoing Outreach

## Join Us!



**THURSDAY, SEPTEMBER 1, 2022**

6 PM

Northeast Regional Command Center  
9600 Dyer

**WEDNESDAY, SEPTEMBER 7, 2022**

6 PM

Municipal Services Center  
7968 San Paulo

**WEDNESDAY, SEPTEMBER 14, 2022**

6 PM

Marty Robbins Rec Center  
11620 Vista Del Sol

**TUESDAY, SEPTEMBER 20**

6 PM

Virtual Meeting

**WEDNESDAY, SEPTEMBER 21, 2022**

5:30 PM

Clardy Fox Library  
5515 Robert Alva

**WEDNESDAY, SEPTEMBER 21, 2022**

6 PM

Region 19  
11670 Chito Samaniego

**THURSDAY, SEPTEMBER 22, 2022**

6 PM

The Beast Community Center  
13501 Jason Crandall

**WEDNESDAY, SEPTEMBER 28, 2022**

6 PM

Memorial Senior Center  
1800 Byron

**THURSDAY, SEPTEMBER 29, 2022**

6 PM

Galatzan Rec Center  
650 Wallenberg

**FRIDAY, SEPTEMBER 30**

7:30 AM

Denny's  
4690 Woodrow Beam Transmountain

**THURSDAY, OCTOBER 6, 2022**

6 PM

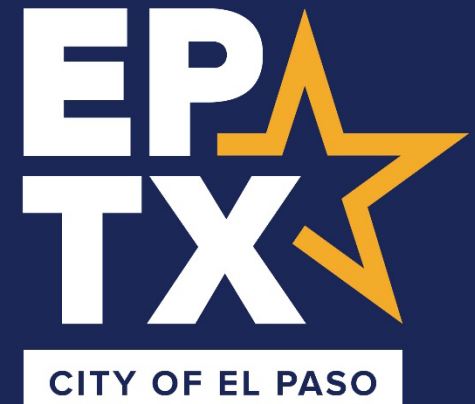
Westside Regional Command Center  
4801 Osbourne





# Ongoing Outreach

## Join Us!



**WEDNESDAY, OCTOBER 12, 2022**

**8 AM**

**Village Inn**

**7144 Gateway Blvd East**

Upcoming additional meetings to:

- Moms On Board
- Chamber of Commerce
- Hispanic Chamber of Commerce
- Green Hope Project
- Frontera Land Alliance





## Mission

Deliver exceptional services to support a high quality of life and place for our community



## Vision

Develop a vibrant regional economy, safe and beautiful neighborhoods and exceptional recreational, cultural and educational opportunities powered by a high performing government



## Values

Integrity, Respect, Excellence, Accountability, People



## Misión

Brindar servicios excepcionales para respaldar una vida y un lugar de alta calidad para nuestra comunidad



## Visión

Desarrollar una economía regional vibrante, vecindarios seguros y hermosos y oportunidades recreativas, culturales y educativas excepcionales impulsadas por un gobierno de alto desempeño



## Valores

Integridad, Respeto, Excelencia, Responsabilidad, Personas