



ITEM 35

Sheldon Court ROW Vacation

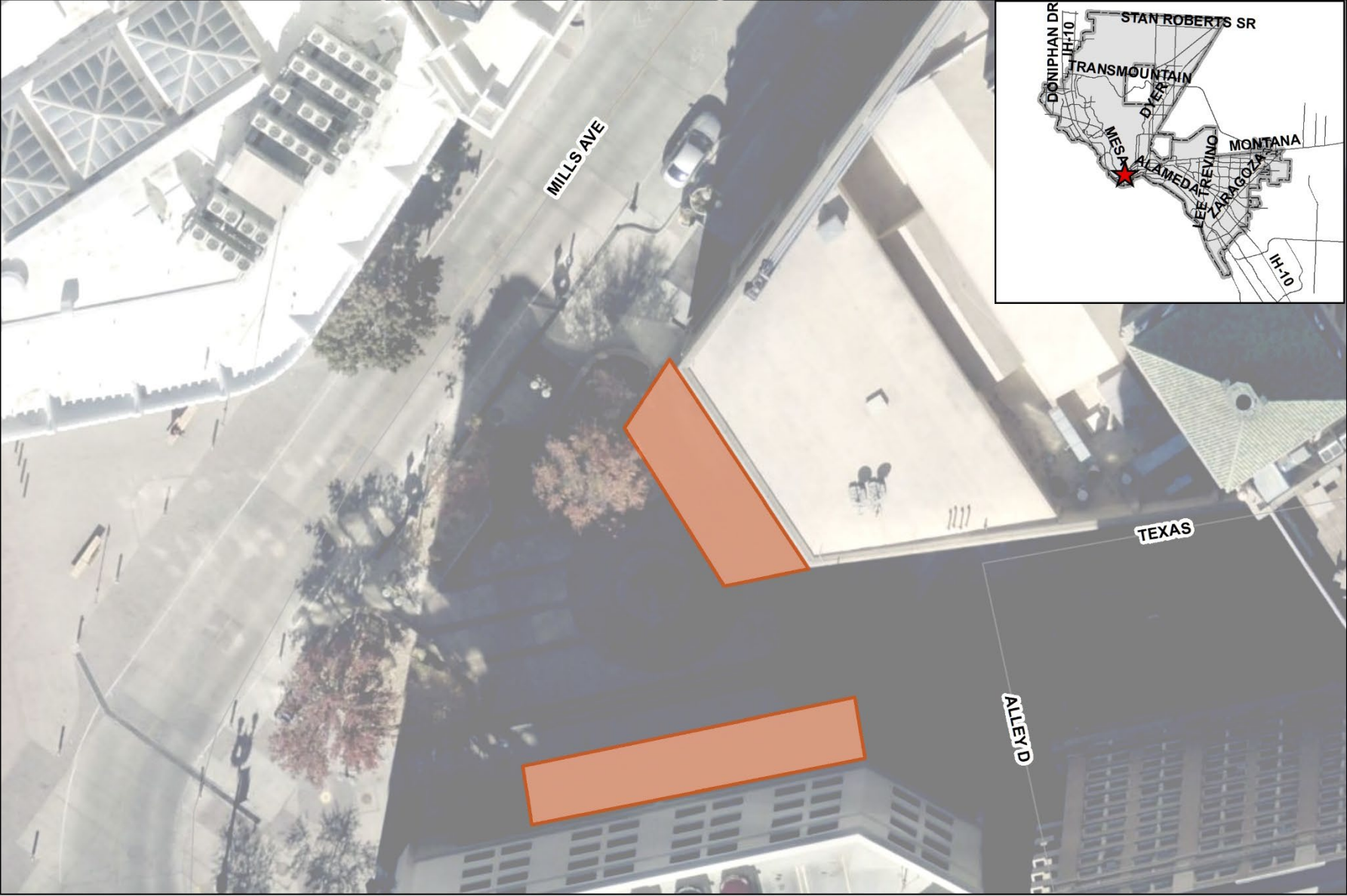
SURW22-00011



Strategic Goal 3.

Promote the Visual
Image of El Paso

Sheldon Court ROW Vacation

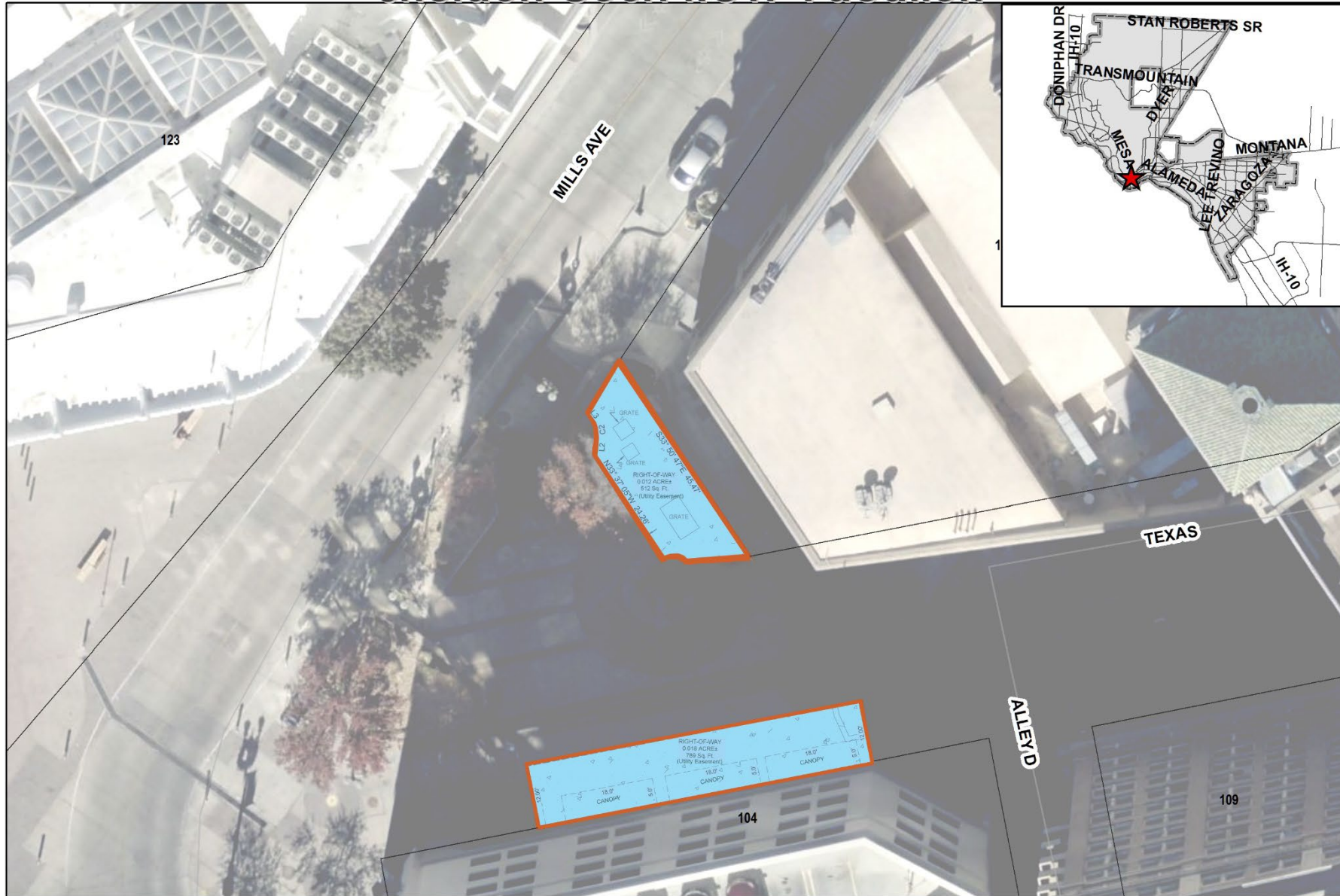


Aerial

This map is designed for illustrative purposes only. The features depicted here are approximate and more site-specific studies may be required to draw accurate conclusions. Enlargements of this map to scales greater than its original can induce errors and may lead to misinterpretations of the data. The Planning & Inspections Department Planning Division makes no claim to its accuracy or completeness.



Sheldon Court ROW Vacation



ROW with Existing Development

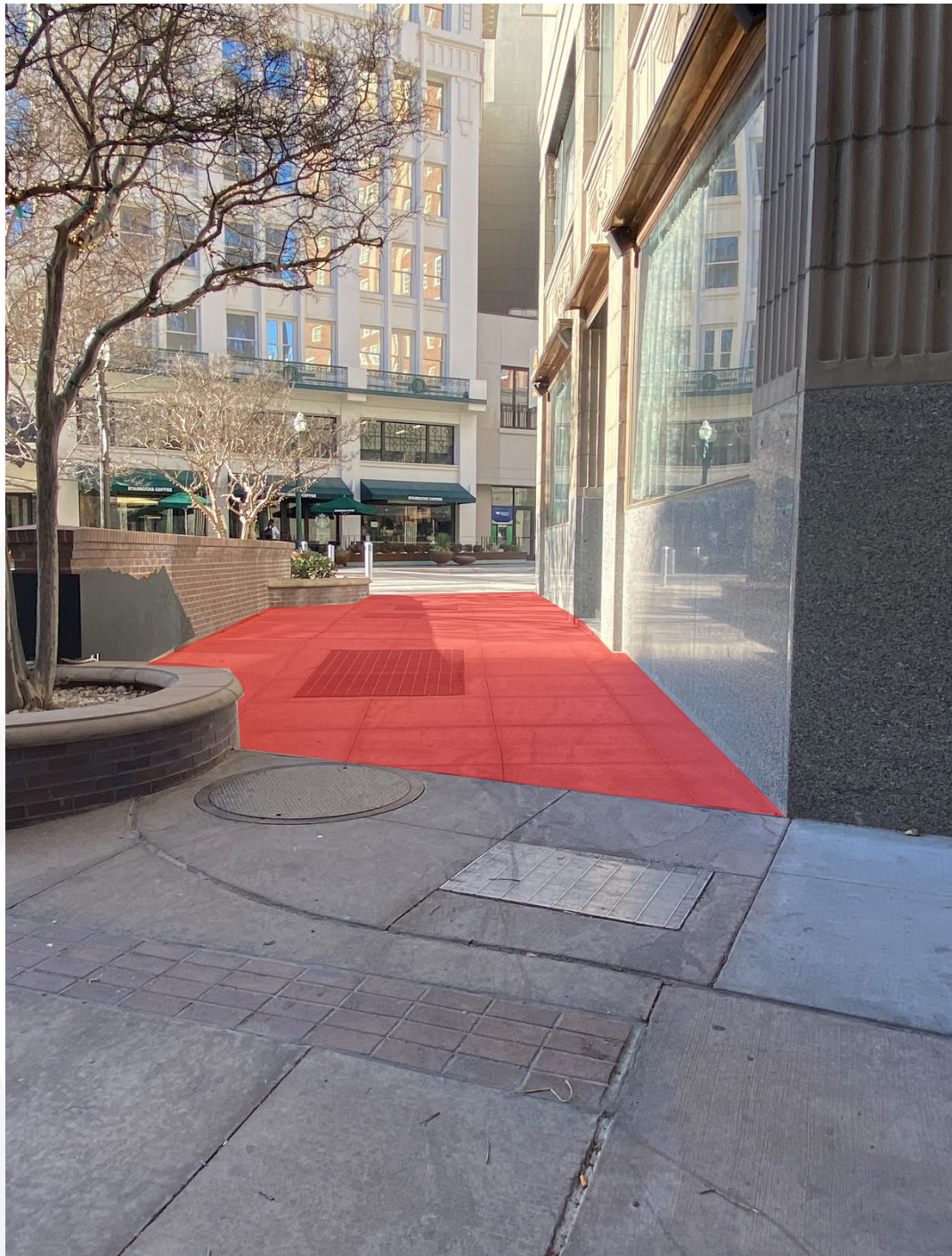


This map is designed for illustrative purposes only. The features depicted here are approximate and more site-specific studies may be required to draw accurate conclusions. Enlargements of this map to scales greater than its original can induce errors and may lead to misinterpretations of the data. The Planning & Inspections Department Planning Division makes no claim to its accuracy or completeness.



Subject
Property





Subject
Property





Subject Property

Public Input

- Notice of public hearing was published in the El Paso Times on September 9, 2022.
- Notices were mailed to property owners within 200 feet on August 26, 2022.
- The Planning Division has not received any communication in support nor opposition to the request.



Recommendation

- Staff recommends **approval** of Sheldon Court ROW Vacation.
- City Plan Commission recommended unanimous **approval** on September 22, 2022.





Mission

Deliver exceptional services to support a high quality of life and place for our community



Vision

Develop a vibrant regional economy, safe and beautiful neighborhoods and exceptional recreational, cultural and educational opportunities powered by a high performing government



Values

Integrity, Respect, Excellence, Accountability, People