



ITEM 38

4808 Vista Del Monte Special Permit

PZST21-00002

Strategic Goal 3.

Promote the Visual Image of
El Paso



PZST21-00002



Aerial

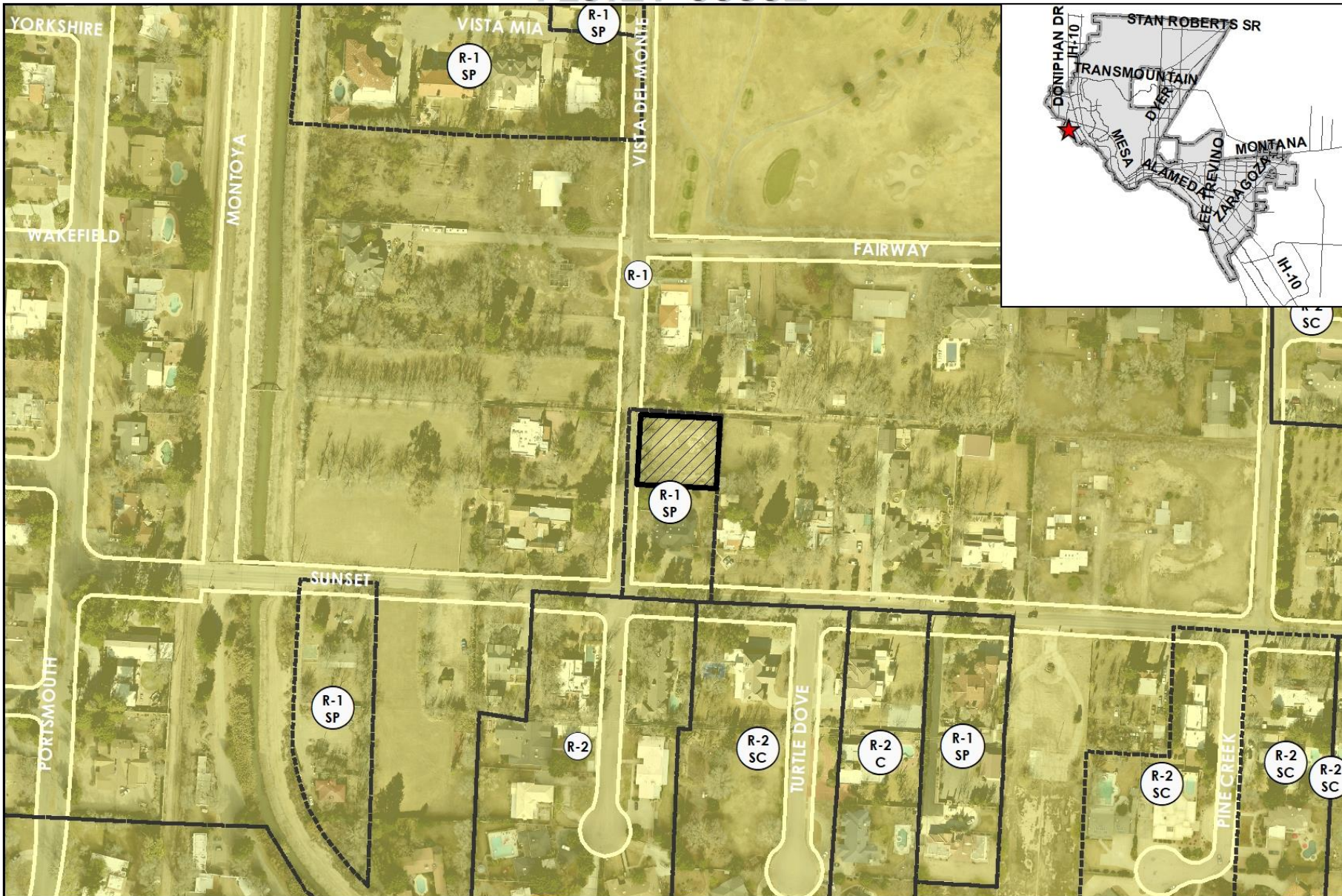
This map is designed for illustrative purposes only. The features depicted here are approximate and more site-specific studies may be required to draw accurate conclusions. Enlargements of this map to scales greater than its original can induce errors and may lead to misinterpretations of the data. The Planning & Inspections Department Planning Division makes no claim to its accuracy or completeness.



 Subject Property



PZST21-00002



Existing Zoning

This map is designed for illustrative purposes only. The features depicted here are approximate and more site-specific studies may be required to draw accurate conclusions. Enlargements of this map to scales greater than its original can induce errors and may lead to misinterpretations of the data. The Planning & Inspections Department Planning Division makes no claim to its accuracy or completeness.

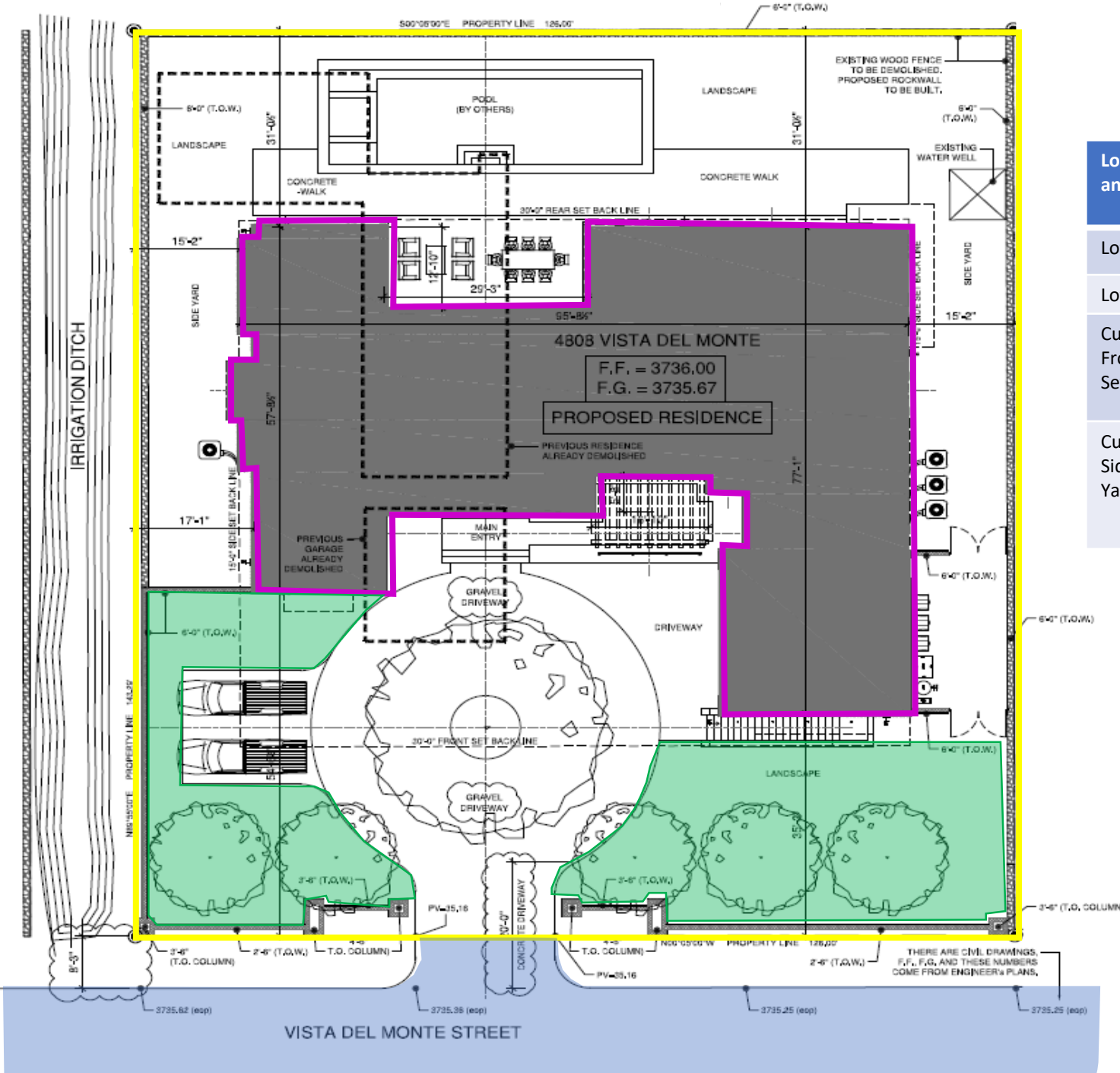


 Subject Property

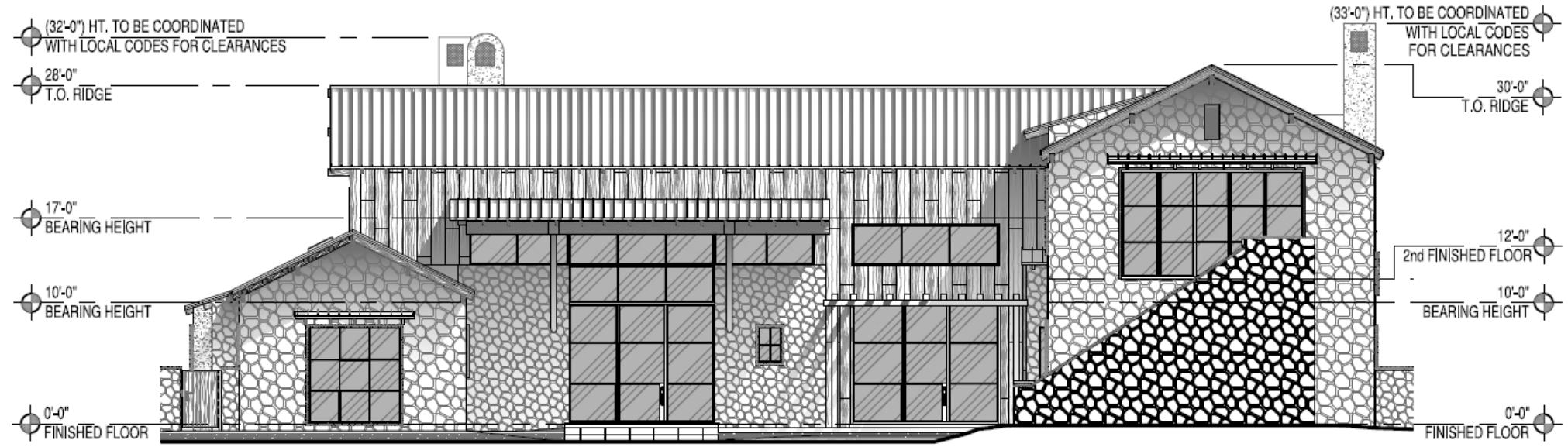


Detailed Site Plan

Lot Dimensions and Setbacks	Required	Proposed
Lot Size	20,000 sq. ft.	18,053.28 sq. ft.
Lot Depth	150 ft.	143.29 ft.
Cumulative Front/Rear Yard Setback	100 ft.	66 ft. 3 in.
Cumulative Side/Side Street Yard Setback	40 ft.	30 ft.



Elevations

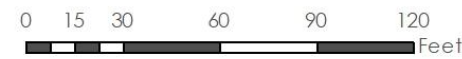


02	FRONT EXTERIOR ELEVATION
A001	SCALE: 3/32" = 1'-0"

Aerial with Site Plan



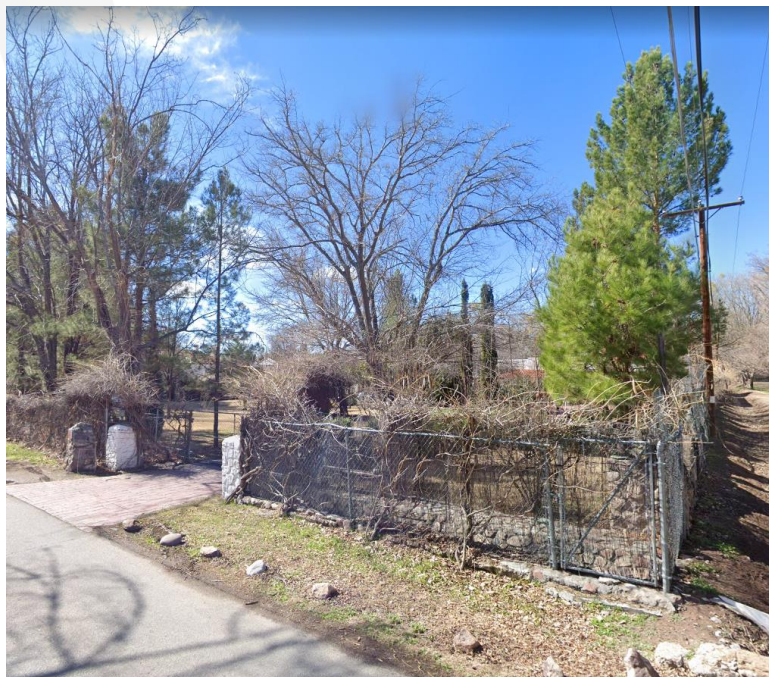
This map is designed for illustrative purposes only. The features depicted here are approximate and more site-specific studies may be required to draw accurate conclusions. Enlargements of this map to scales greater than its original can induce errors and may lead to misinterpretations of the data. The Planning & Inspections Department Planning Division makes no claim to its accuracy or completeness.





Subject Property

Surrounding Development



W



N



E

S



Public Input

- The Planning Division received a letter and an e-mail in support of the request.





Recommendation

- CPC and Staff recommend approval of the special permit and detailed site plan



Mission

Deliver exceptional services to support a high quality of life and place for our community



Vision

Develop a vibrant regional economy, safe and beautiful neighborhoods and exceptional recreational, cultural and educational opportunities powered by a high performing government



Values

Integrity, Respect, Excellence, Accountability, People