



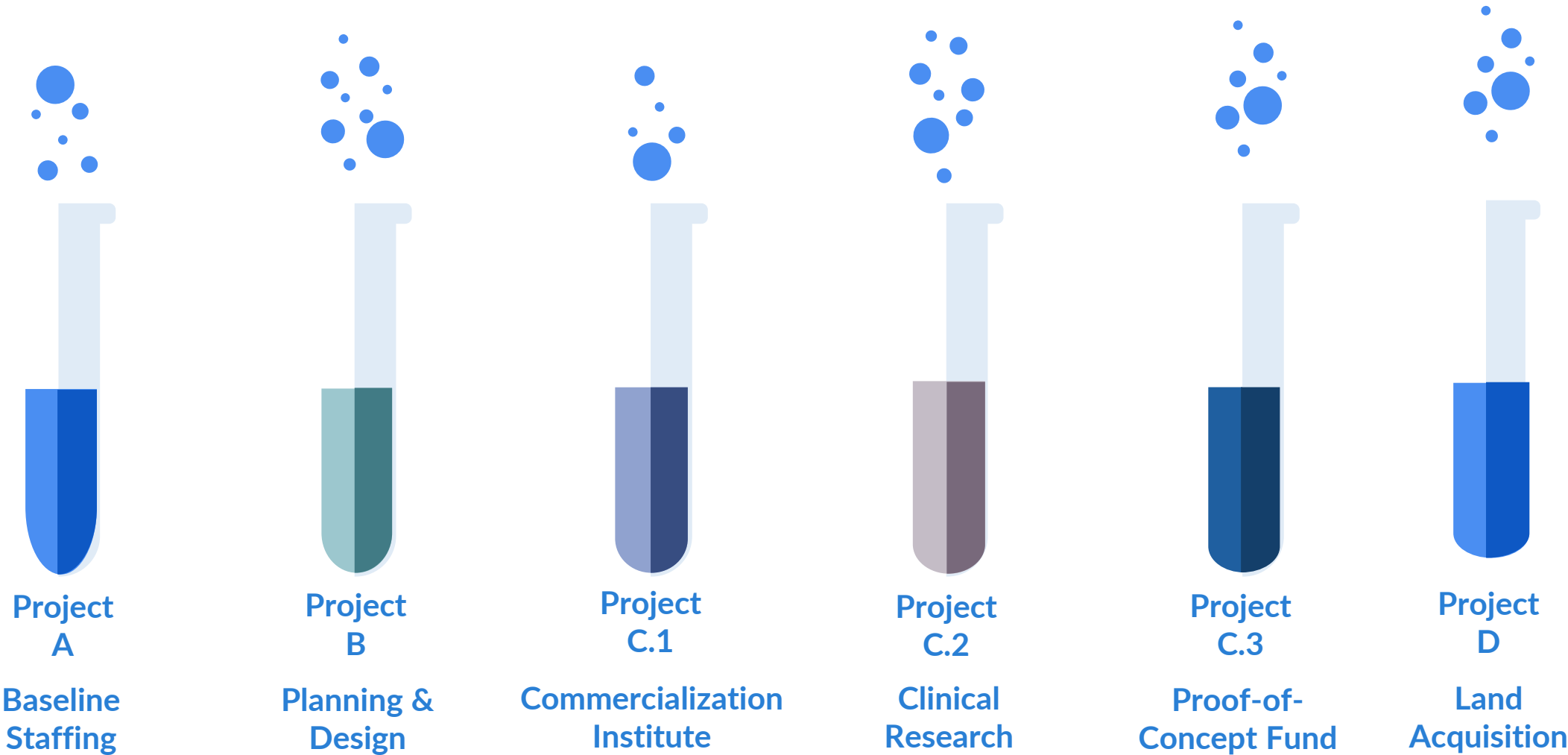
---

# The Medical Center of the Americas Foundation: Annual Oral Report to City Council

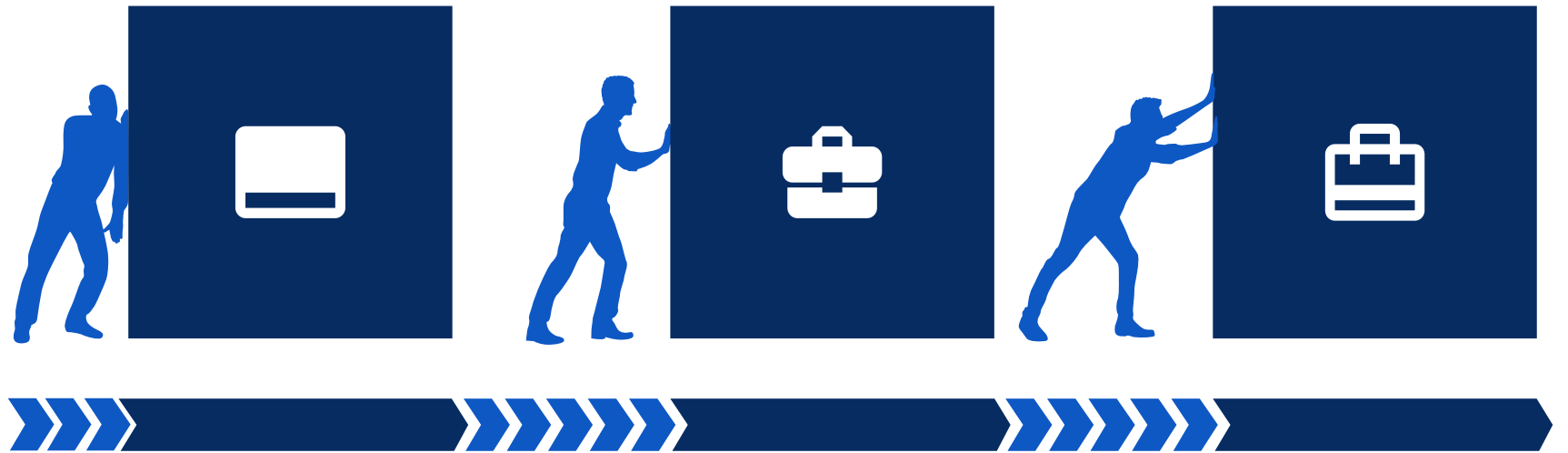
2025

# Non-Building Components

---



# Building Components



Project D.1

Parking

Project E

Tech Building

a/k/a Cardwell Collaborative

Project F

TTUHSC El Paso

Nursing School Building





A photograph of a modern building with a large overhang supported by several thick, light-colored concrete columns. The building has a grey facade with large windows. A tree with green and yellow leaves is in the foreground on the right. The sky is overcast.

# 2025 MCA Performance Highlights



## Property Assets

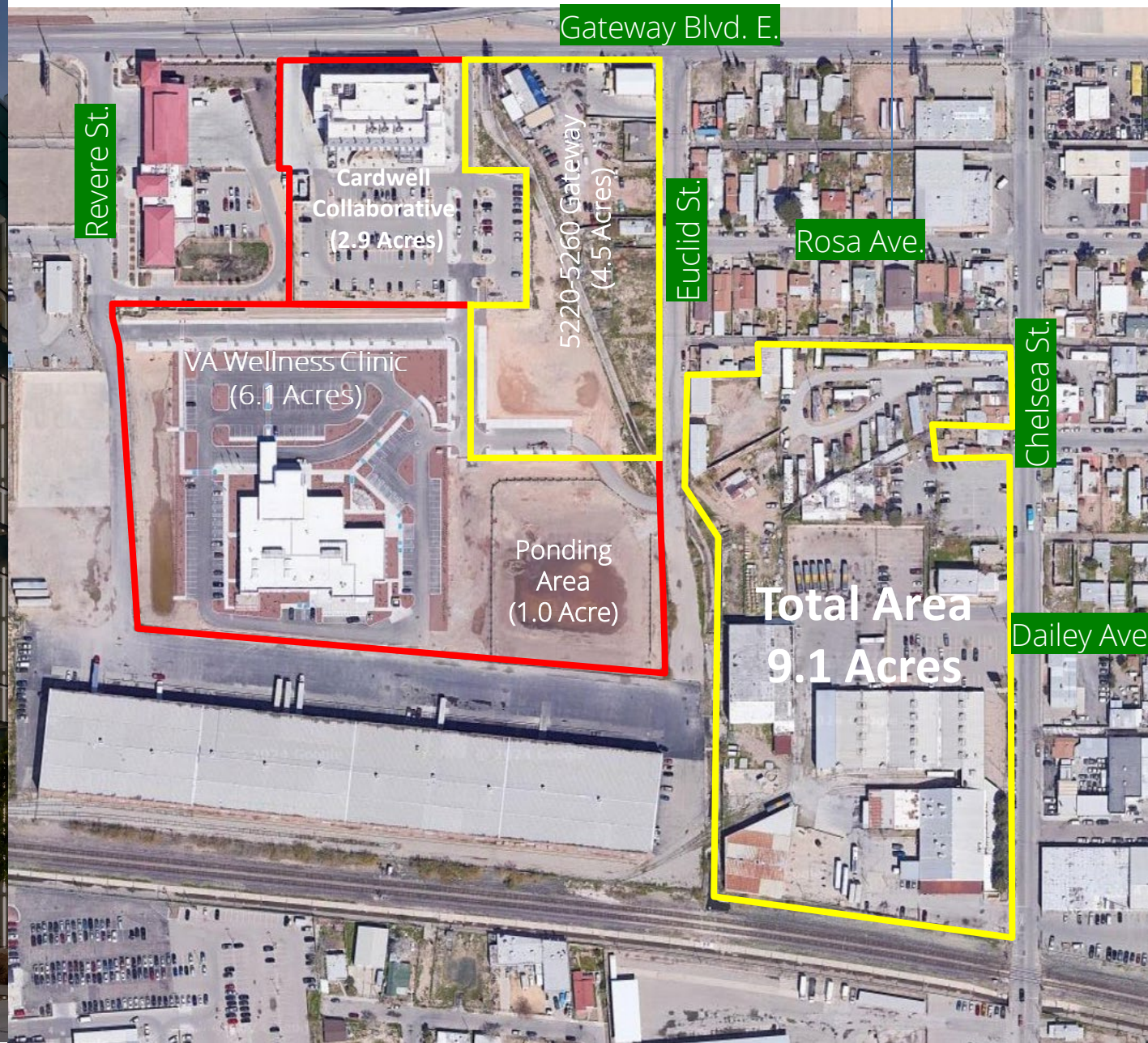
5


- Cardwell Collaborative
  - Opened 2016
  - \$27 million
  - 83% occupied of which 12.3% occupied by MCA's Innovation Center / lab
  - NMTC + Commercial Financing
- VA Wellness Center
  - Opened 2020
  - \$16 million
  - 100% occupied
  - 20-year lease with VA, two 4-year options
  - NMTC Financing
- 24 acres acquired
  - 9.5 acres developed
  - 14.5 acres undeveloped
  - \$10 million on land acquisition 2012 – 2024
    - \$1 million on road & infrastructure improvements
    - \$500,000 in environmental remediation funded by EPA grant





# MCA Site Planning



 Current developed MCA properties (10 acres)

 Future developments (14 acres)





# Melinda & Meyer Marcus Foundation Innovation Center

## Company Support

### Health Tech Accelerators - Inspire & Elevate

- 2 Cohorts - 8 startups
- \$40,000 in POC funds

### Company Support

- 921 hours of office hours & training
- Customized product development
- Engineering & regulatory support

### Cardwell Collaborative

- 8 companies in wet / dry labs
- 4 in shared labs, 3 in private labs

## Ecosystem Development

### BioTech Poster Showcase (May 1, 2025)

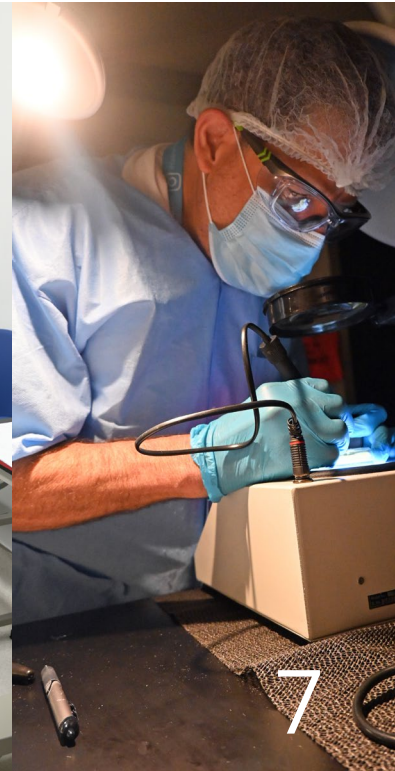
- 39 submissions, 30 posters showcased

### El Paso Startup Week (Sept 28 – Oct 4, 2024)

- 20+ ESO participated, 13 events
- 440+ participants

### Training & networking (monthly)

- 69 public training & networking events – hosted, supported or sponsored
- 1,610+ participants





**August 21, 2025**  
**165 attendees**  
**33 speakers / panelists**  
**12 sponsors**  
**6 partners**

The Summit united **leaders, researchers, and innovators** for a day of breakthrough discussions and cross-border collaboration.

From startups to policy experts, every conversation moved us closer to a healthier, more connected Borderplex.

*“The format was effective, the speakers engaging, and the content was relevant.”*  
*Attendee Survey Response*





# STEM / Workforce



## Initiatives

### Curriculum

- Developed a more robust, hands-on science curriculum for elementary and middle school STEM Camps
- Developed a high school STEM curriculum. Hosted 2-day high school camp focused on AI in the medical industry

### Resources

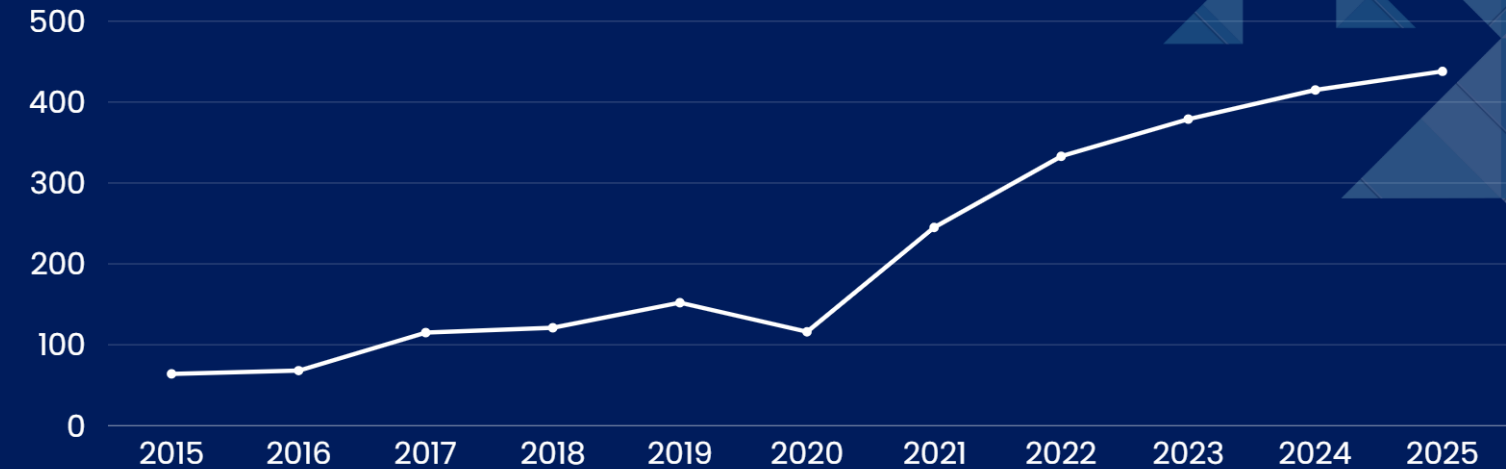
- Updated and expanded the STEM Workbook with 12 new experiments

### Partnerships

- Instituted partnerships with El Paso Children's Hospital and Providence Children's Hospital to provide STEM camps to children on oncology wards
- Boys & Girls Club weeklong camps



# Trials Over the Years



## 2025

326

EL PASO

87

LAS CRUCES

3

FORT BLISS

416

TOTAL

In 2024, a total of 415 trials were recorded. There was a total of 438 in 2025, a **5.5% growth over last year** and a 548.4% growth since 2015.

## Specialties

48%

ONCOLOGY/HEMATOLOGY

6.5%

CARDIOVASCULAR

6.5%

NEUROLOGY

6.5%

RHEUMATOLOGY

32.5%

OTHER

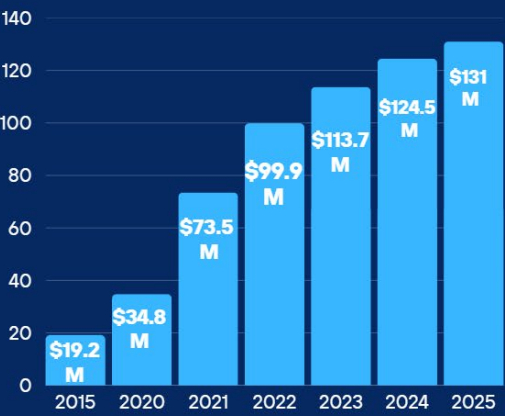




# Clinical Trials *Annual Report*



## Economic Impact



In 2025, about **\$131 M** in trial revenue was generated among El Paso, Las Cruces, and Fort Bliss. This is a **584% increase since 2015**, and a **5.5% increase since last year**, bringing in \$6.5 M more in revenue in 2025.

## Jobs

Each CRC can run an average of 7 trials per year, with 438 trials counted in 2025, we can estimate an average of 63 CRC jobs generated for this year. 85 PIs were recorded this year, with the exception of the trials that did not report their PIs. For the remainder of the trials, we can assume a PI can run an average of 7 trials per year. With the information given, we can infer at least a total of **191 jobs** were generated in the clinical trial industry for PIs and CRCs.

63

CRC Jobs

132

PIs recorded

= 195

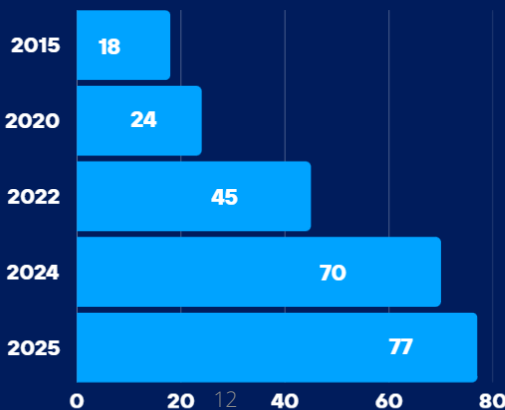
TOTAL





In 2015, there were 18 investigator sites recorded involved in clinical trials. In 2025, 59 more sites were recorded, showing **77 active sites** and a 328% growth since 2015. In 2024, 70 sites were recorded showing a 10% difference compared to this year.

#### Active Investigator Sites







---

# Financial Report

**Medical Center of the Americas Foundation and Affiliates**  
**Project Status Report Summary**  
**For the Period September 1, 2024 through August 31, 2025**

**Economic Development Program Grant (Impact Fund):**

2024 appropriation	3,249,646	
City note payment	<u>\$ (249,646)</u>	
Net grant revenue		<u>3,000,000</u>

**Grant expenditures by category:**

**Non-building components:**

Personnel expenses <sup>1</sup>	\$ 1,239,878	
Professional fees & contract services (Supplement A)	154,372	
Administrative expenses (Supplement B)	98,556	
Other office equipment	12,858	
Land acquisition (Supplement C)	<u>1,296,800</u>	
Total non-building components		2,802,465

**Building components:**

TTUHSC Hunt School of Nursing funding	612,000	
Cardwell Collaborative (Supplement D)	<u>609,965</u>	
Total building components		<u>1,221,965</u>

Total expenditures		<u>4,024,430</u>
--------------------	--	------------------

Deficit		<u><u>\$ (1,024,430)</u></u>
---------	--	------------------------------

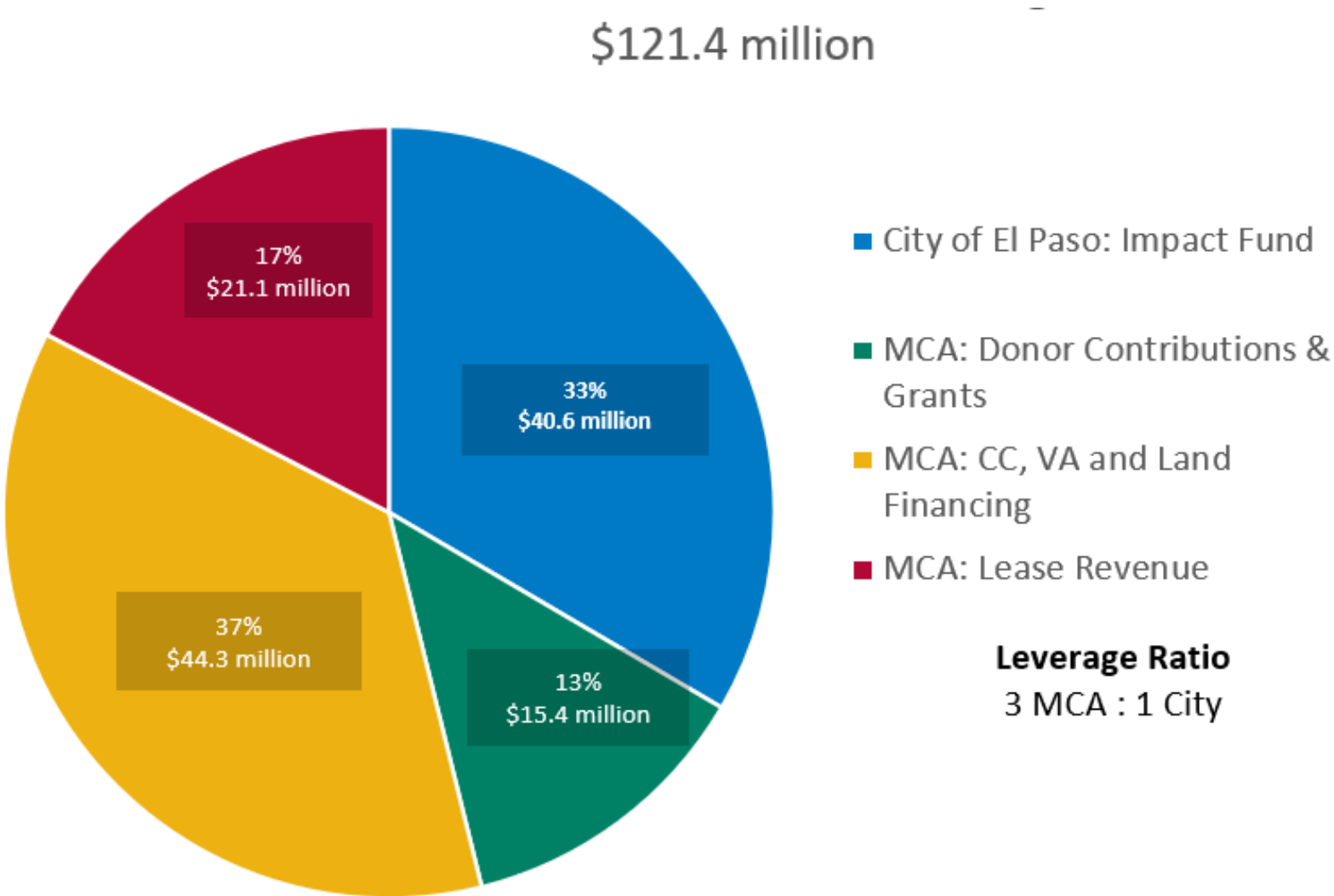
<sup>1</sup> Detailed payroll and benefit records are available for review at the MCA offices.





# Economic Development

MCA Cumulative Financial Resource Leverage 2012 - 2025:





An aerial photograph of a modern, multi-story building complex with a large, paved parking lot in the foreground. The building has a mix of white and grey panels and large glass windows. To the left of the main building is a smaller structure with a red roof. The background features a cityscape and a range of mountains under a clear sky. A yellow horizontal line is positioned above the text.

# Thank You

Your leadership, governance, and support are the foundation for our growth and prosperity