

# DOWNTOWN PARKS MAINTENANCE UPDATE

4-09-2025

1

## Parks Downtown Scope of Work

2

- ▶ Coordination with Downtown Entities
  - ▶ Southwest University Park
    - ▶ Landscaping [Irrigation, Tree and Shrub Planting]
    - ▶ Property Control Support
  - DMD Support
- ▶ Routine Work and Projects for Downtown Parks
  - ▶ Turf and Landscaping Work
  - ▶ Park Amenities Installation
  - ▶ Future Work

3



## Southwest University Park: Landscaping Support

4



## Southwest University Park: Landscaping Support cleanup

5

Return furniture and equipment to Property Control



Southwest University Park Support

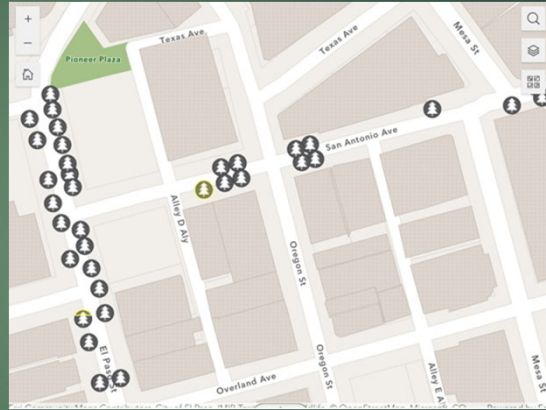
6

Remove metal tree grates, plant and water trees as needed



Replace metal tree grates with rubber mulch; better for pedestrians and for trees

7



## DMD Landscaping Support

Item	Part #	Supplier	Price	Quantity	Item Total
58-60 - 6' Cast Bench, Steel seat, 2 Arms	58-60	Exerplay	\$1,516.20 EA	25	\$37,905.00
Freight/ Shipping Charges	Freight	Exerplay	\$3,998.00 EA	1	\$3,998.00
Installation of Site Furnishing	Install	Exerplay	\$6,785.00 EA	1	\$6,785.00

**Total: \$48,688.00**

8

We replaced 25 composite plastic benches with 6' metal benches.

We have made an additional purchase of twenty-five metal benches, along with arm rests, to discourage sleeping on the benches



9

## Calendar Park Renovation: Before and After



10

## Calendar Park Turf Renovation: Before and After



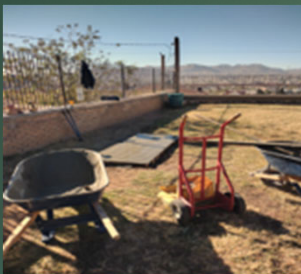
## Amenities Installation at San Jacinto Plaza: Remove and Replace

11



## Amenities Installation at Caruso Park: Installation where none existed

12



13

Expanded  
Capabilities  
allows us to  
Expand our  
S.O.W.

Expanding Calendar Park by  
expanding it into space  
currently used as part of Myrtle  
St.

