

# VISION ZERO QUICK BUILD PROGRAM

CID & SAM



# VISION ZERO

## The El Paso City Council adopted the Vision Zero Action Plan in June 2023, intending to reduce traffic deaths to zero through a Safe Systems Approach

- Safe Systems Approach is a framework developed by the Federal Highway Administration (FHWA), to prevent crashes from occurring and to minimize the harm to those involved
- Safe Systems Approach is built upon the idea that roadway fatalities and serious injuries are not inevitable but are preventable
- Through infrastructure improvements, community collaboration, and design, the City of El Paso is working to make our roads safer for all users

This text box is to remind you about the ASL translator service. Do NOT add any info in this space.

REMOVE THIS BOX ONCE THE PRESENTATION IS FINALIZED.



## **GOAL 2: SET THE STANDARD FOR A SAFE & SECURE CITY**

## **GOAL 7: ENHANCE AND SUSTAIN EL PASOS INFRASTRUCTURE NETWORK**

**Vision Zero Action Item D-2A: Adopt a Vision Zero Quick Build Policy in order to streamline and expedite project delivery**

**Quick Builds are a core component of Vision Zero Projects Nationwide**



This text box is to remind you about the ASL translator service. Do NOT add any info in this space.

REMOVE THIS BOX ONCE THE PRESENTATION IS FINALIZED.





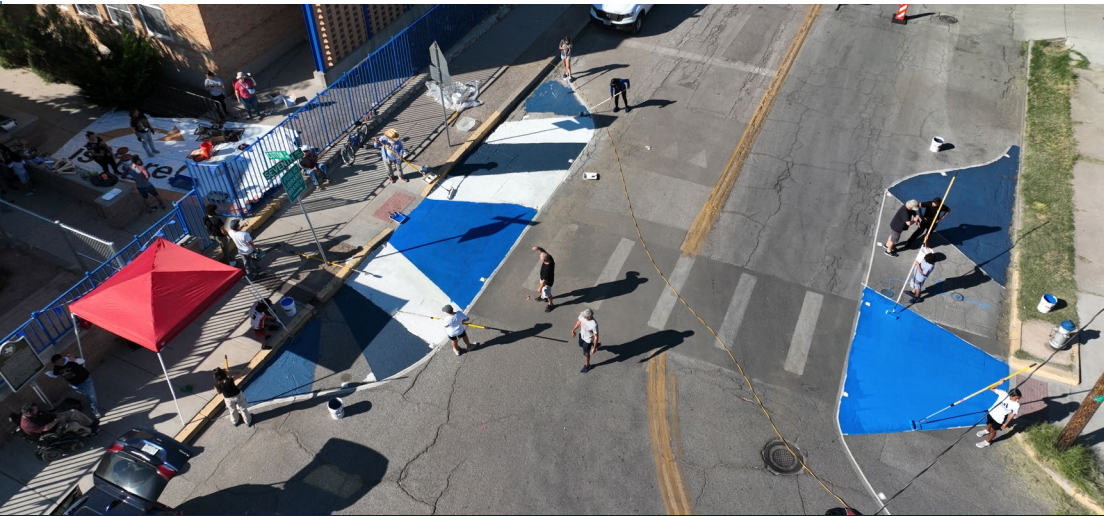
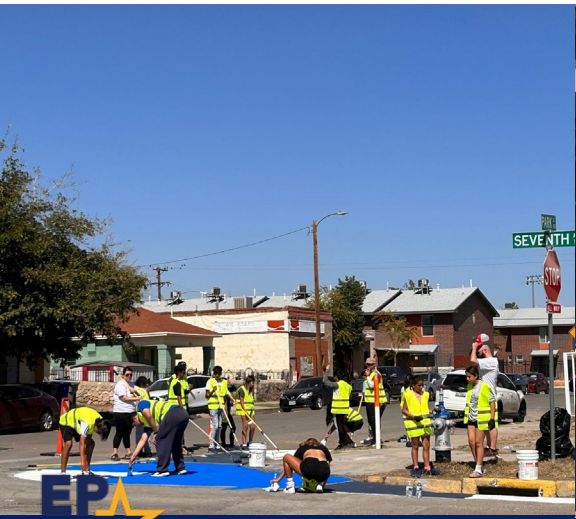
# OVERVIEW

## CID & SAM developed a program to accelerate safety improvements on El Paso high-injury roadways through fast, low cost, and flexible projects

- Improvements use low cost tools such as paint, delineators, and modular materials
- Improve safety **ONLY** in areas with fatal or high injury crash history
- Project designs are flexible, inform future designs, and reduce financial risk
- Empowers the city to respond quickly to safety concerns & allows community members to engage with design

This text box is to remind you about the ASL translator service. Do NOT add any info in this space.

REMOVE THIS BOX ONCE THE PRESENTATION IS FINALIZED.





# SUPPORTING DATA & LOCAL PROJECTS

## Analysis and Observational Behavior Assessment by Bloomberg Associates, State of Massachusetts, San Francisco, Austin, New York, and El Paso report:

- 27% increase in drivers yielding to pedestrians with the right of way
- 50% reduction in crashes involving pedestrians and cyclists
- 65% reduction in vehicles exceeding speed limits

This text box is to remind you about the ASL translator service. Do NOT add any info in this space.

REMOVE THIS BOX ONCE THE PRESENTATION IS FINALIZED.





# ELIGIBLE QUICK BUILD PROJECTS

**Improvements using low cost tools such as paint, delineators, and modular materials. All materials, designs, and locations subject to traffic engineer approval & existing regulations.**

- Curb Extensions
- Chicanes
- Pop Up Bike Lanes
- Traffic Circles
- Solar Lighting
- Asphalt Art
- Lane Reconfiguration
- Signal Timing Alternations
- Median Closure/ Turn Restrictions

This text box is to remind you about the ASL translator service. Do NOT add any info in this space.

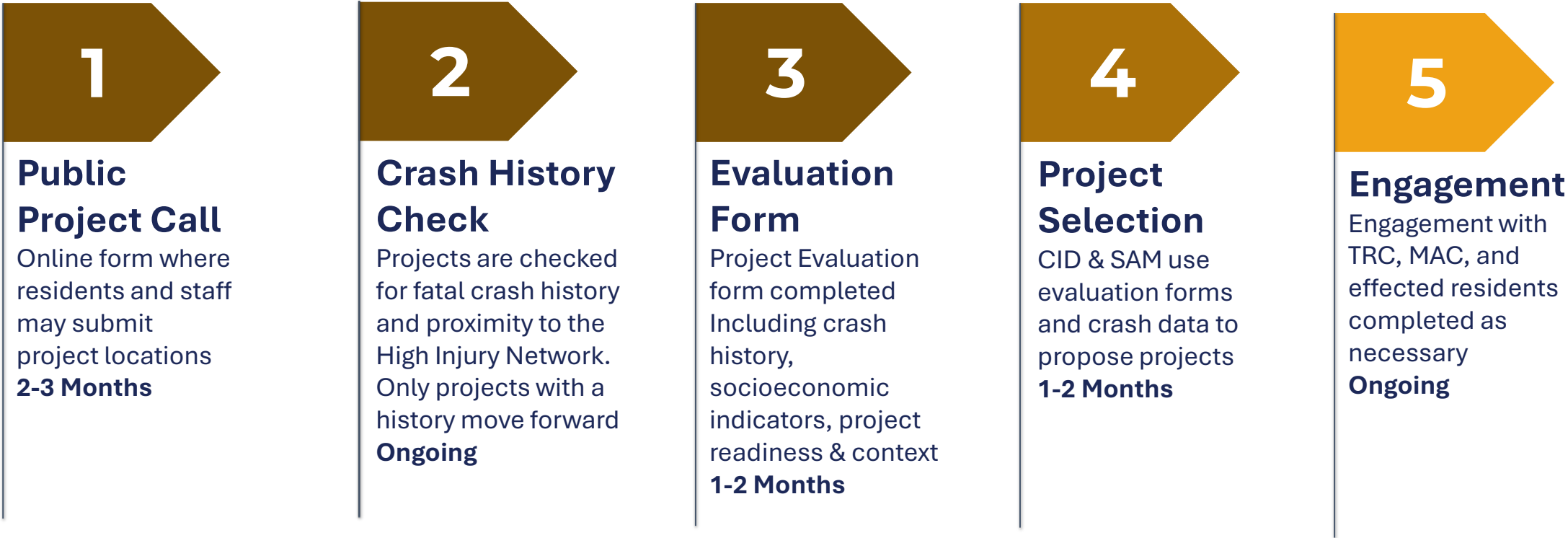
REMOVE THIS BOX ONCE THE PRESENTATION IS FINALIZED.



# BIANNUAL PROJECT SELECTION PROCESS

This text box is to remind you about the ASL translator service. Do NOT add any info in this space.

REMOVE THIS BOX ONCE THE PRESENTATION IS FINALIZED.



# IMPLEMENTATION PROCESS

This text box is to remind you about the ASL translator service. Do NOT add any info in this space.

REMOVE THIS BOX ONCE THE PRESENTATION IS FINALIZED.

6

## Project Design

Combination of consultant and Staff led design  
**2-3 Months**

7

## Procurement

Consultant led designs will undergo the procurement process  
**Varies**

8

## Construction

A combination of in house by SAM and outside contractors  
**1-2 Months**

9

## Analysis

CID & SAM use high level data sources to evaluate effectiveness and community perception  
**12-24 Months**



# EVALUTION & REPORTING

**Before and after studies will be incorporated into the annual Vision Zero report, detailing the impacts on speed, volumes, and user behavior, including:**

- Project locations and treatments
- Community engagement outcomes
- Cost breakdown
- Crash trends

This text box is to remind you about the ASL translator service. Do NOT add any info in this space.

REMOVE THIS BOX ONCE THE PRESENTATION IS FINALIZED.



# REQUESTED ACTION

- **Approval of Council Resolution to adopt Quick Build Program Policy**
- **Authorize CID & SAM to move forward utilizing the existing general fund allocation**

This text box is to remind you about the ASL translator service. Do NOT add any info in this space.

REMOVE THIS BOX ONCE THE PRESENTATION IS FINALIZED.

