



CITY OF EL PASO

Trails and Trailheads

August 15, 2023

4: Enhance El Paso's Quality of Life Through Recreational, Cultural, and Educational Environments

7: Enhance and Sustain El Paso's Infrastructure Network





AGENDA

- Background
- Active Projects



Project Selection

- Identified projects were selected during the development of the bond based on planning documents:
 - Parks and Recreation Master Plan
 - Plan El Paso
 - City of El Paso Bike Plan,
 - Needs expressed by the community
- The projects were discussed and reviewed with various committees

*All projects were also approved by Council.
Adding or deleting projects from the program also
requires Council approval.*



Advisory Committees / Boards

- Bicycle Advisory Committee
- City of El Paso Advisory Committee on Public Service Board Land Management
- Museums and Cultural Affairs Advisory Board
- Capital Improvements Advisory Committee
- Bond Oversight Advisory Committee
- Community Development Committee
- Greater El Paso Civic, Convention and Tourism Advisory
- Open Space Advisory Board
- Parks and Recreation Advisory Board.

2012 Quality of Life



- TRAILHEADS



Trailhead Background

- Approved as part of the 2012 Quality of life Bond
- Included as Initiative 7 of the 20 in 2020 Strategic Plan

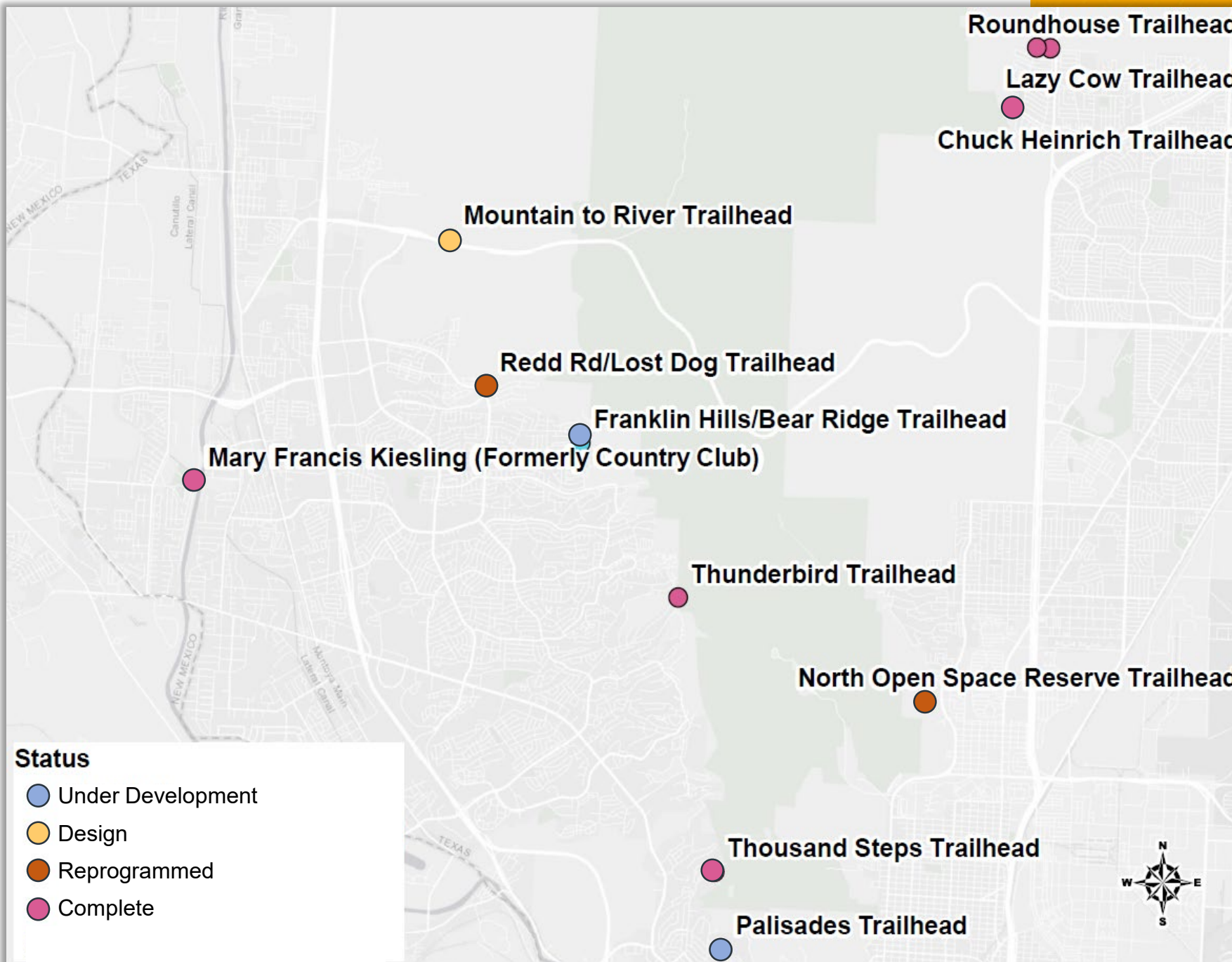
TRAILHEAD AMENITIES:

-  TRASH RECEPTACLES
-  INFORMATION KIOSK
-  MUTT MITT STATION
-  PARKING AREA
-  BICYCLE REPAIR STATION
-  DRINKING FOUNTAIN



CITY OF EL PASO

Trailhead Plan



Project Name	Status
Architectural and Engineering	Complete
Furniture, Fixtures, and Equipment	Complete
Lazy Cow	Complete
Roundhouse Trailhead	Complete
Thousand Steps	Complete
Thunderbird	Complete
Thunderbird – Phase II	Complete
Chuck Heinrich	Complete
Country Club Trailhead at MFK Park	Complete
Redd Rd / Lost Dog	Reprogrammed
Palisades – Land Acquisition	Completed under design
Palisades	Under Development - EPWU
Franklin Hills (Bear Ridge)	EPWU Arroyo Improvement Starting in October
Mountain to River Trailhead	90% Design



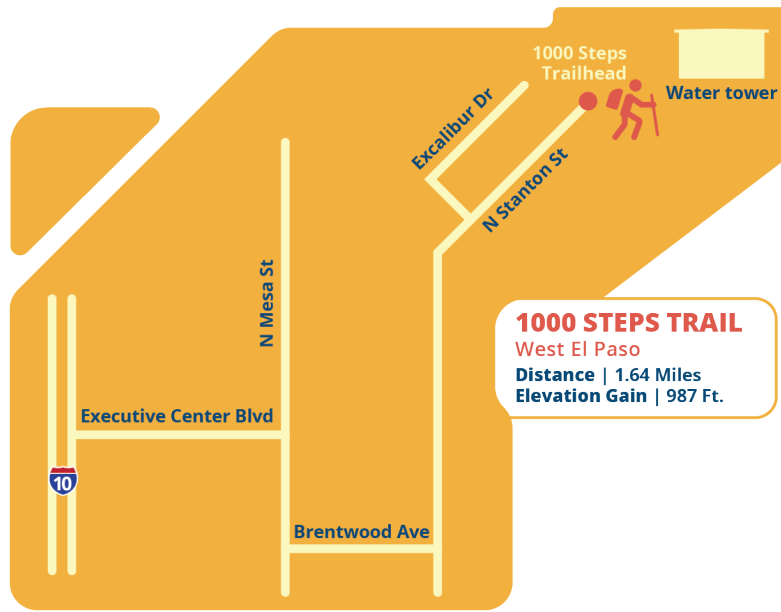
Trailhead Parking Areas



Completed Projects



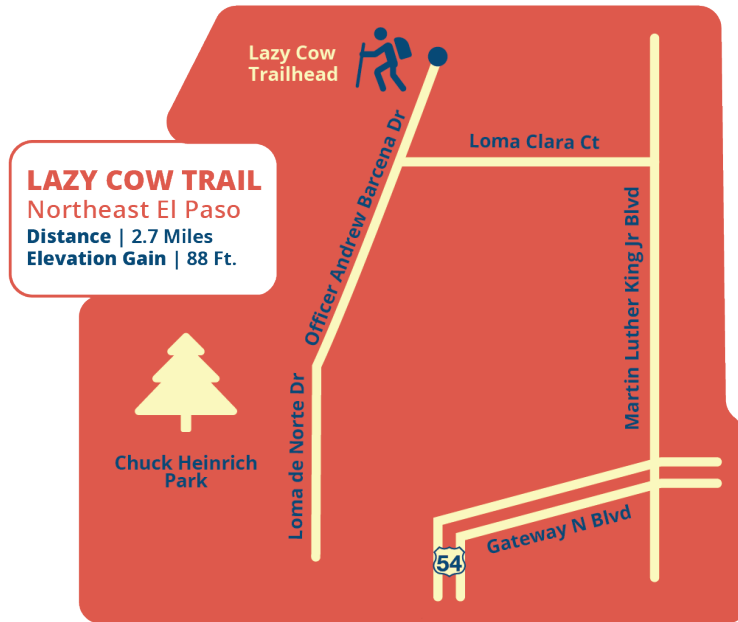
- TRAILHEADS



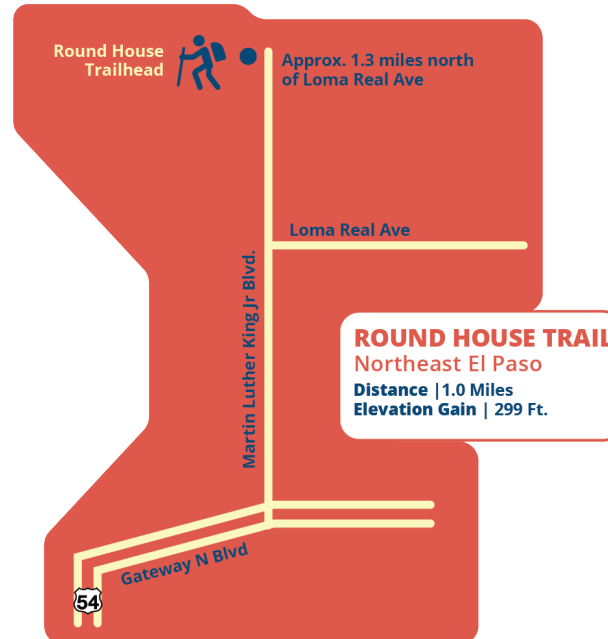
1000 STEPS



JAN SUMRALL MEMORIAL



LAZY COW



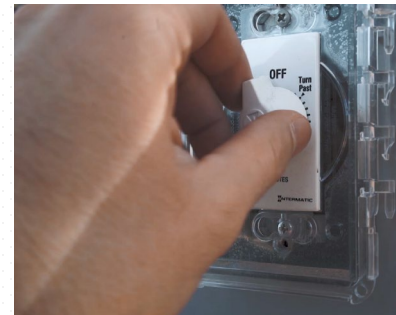
ROUND HOUSE



Completed Trailhead Maps

TRAILHEADS

Thousand Steps



TRAILHEADS

Lazy Cow



TRAILHEADS

Round House



TRAILHEADS

Jan Sumrall



Palisades Trailhead

Project Details

Location:	West El Paso
District:	1
Construction Budget:	\$128,956
Funding Source:	2012 Quality of Life

Project Update:

Design is 100% complete

Construction to be done by EP Water as part of the Palisades Dam Improvements. Trailhead will be constructed following dam improvements. Tentative construction start July 2024.



Bear Ridge

Project Details

Location:	West El Paso
District(s):	8
Construction Budget:	\$128,956
Funding Source:	2012 Quality of Life

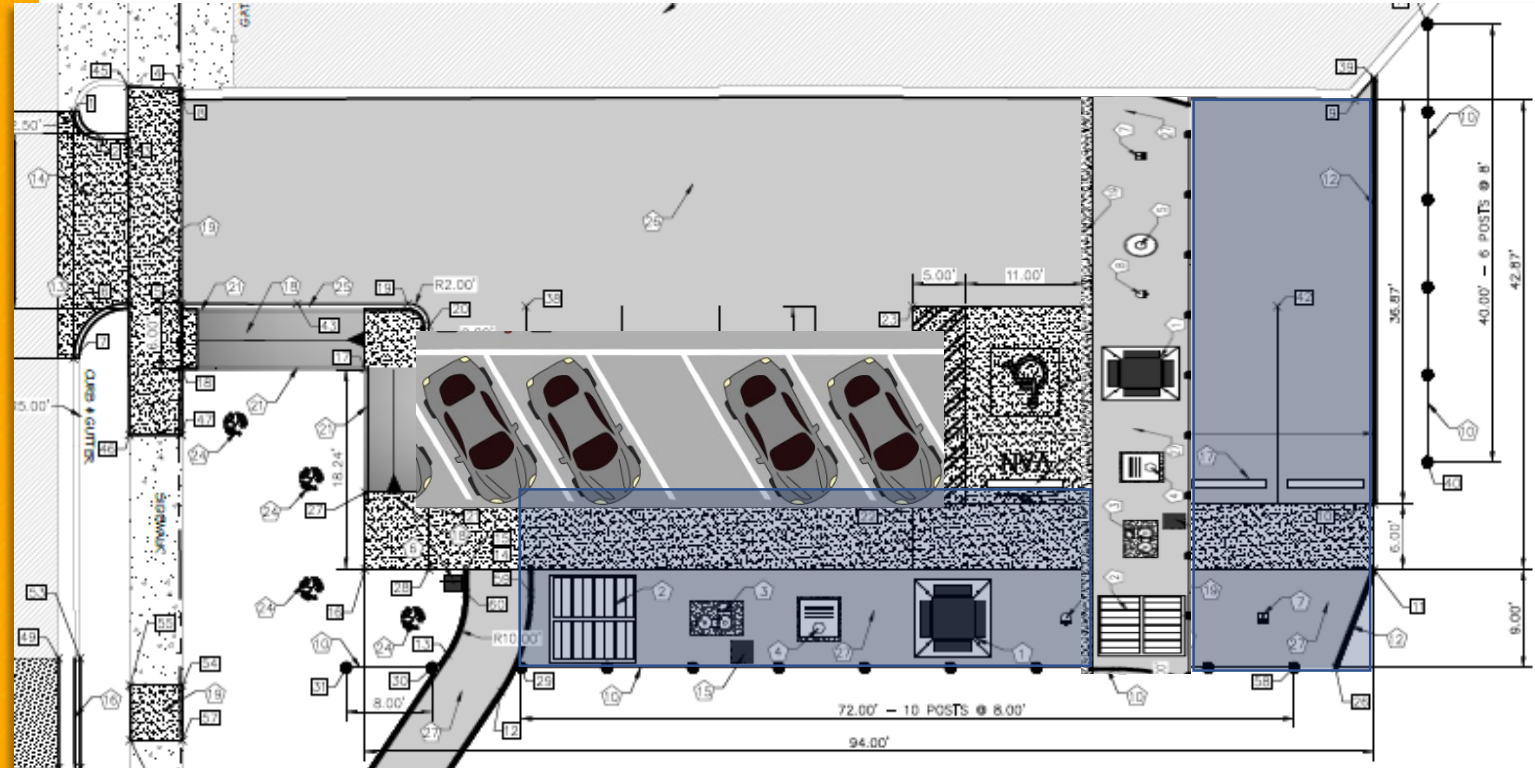
EPWU Arroyo Improvement Starting in October



Bear Ridge

Proposed modifications:

- Angled parking
- Reduce amount of parking to 4 spaces and 1 ADA
- Move amenities to mountain view
- Trail will be field modified to ensure connection to existing trail



2012 Quality of Life



- PAVED TRAILS



Paved Trails

As approved by Council

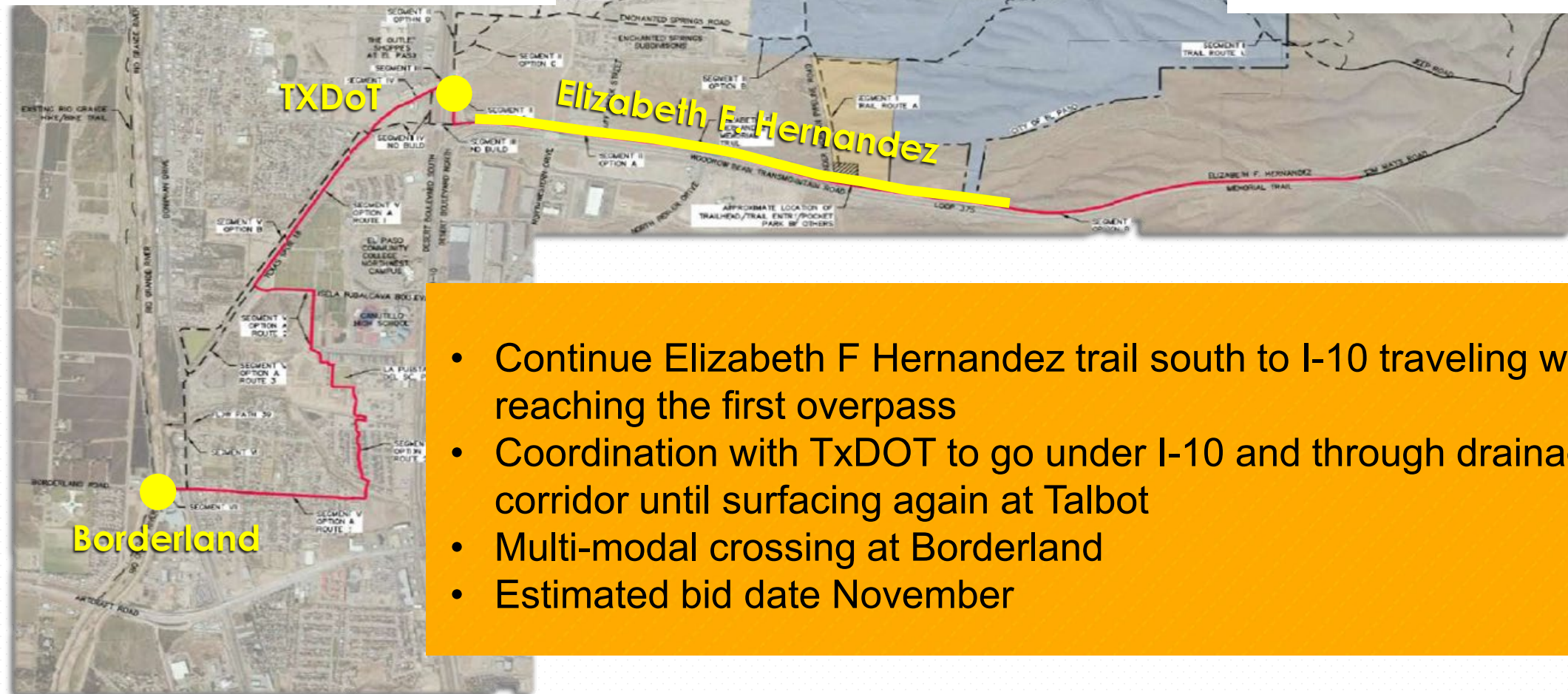
- Valley Creek to Rio Grande N.
- Ascarate to Riverside
- Country Club to Rio Grande N.
- Westside Community Park
- Montana to I 10 Segment A
- Skyline to Loma Real Segment A
- Carolina to Emerson
- Ellis Lateral to Valley Creek
- Sunset Terrace/Terrace Trail Bridges
- Donald to Dyer
- Skyline to Loma Real Segment B
- Montana to I 10 Segment B
- Montana to I 10 Segment C
- Skyline to Loma Real Segment C
- Montana to I 10 Segment D
- Skyline to Loma Real Segment D



2012 Quality of Life Timeline

On March 7, 2017 Council approved amended trail and trailhead priority list to include Mountain to River Trail Phases I, II, and III and an associated trailhead, and a trailhead at Franklin Hills (Bear Ridge)

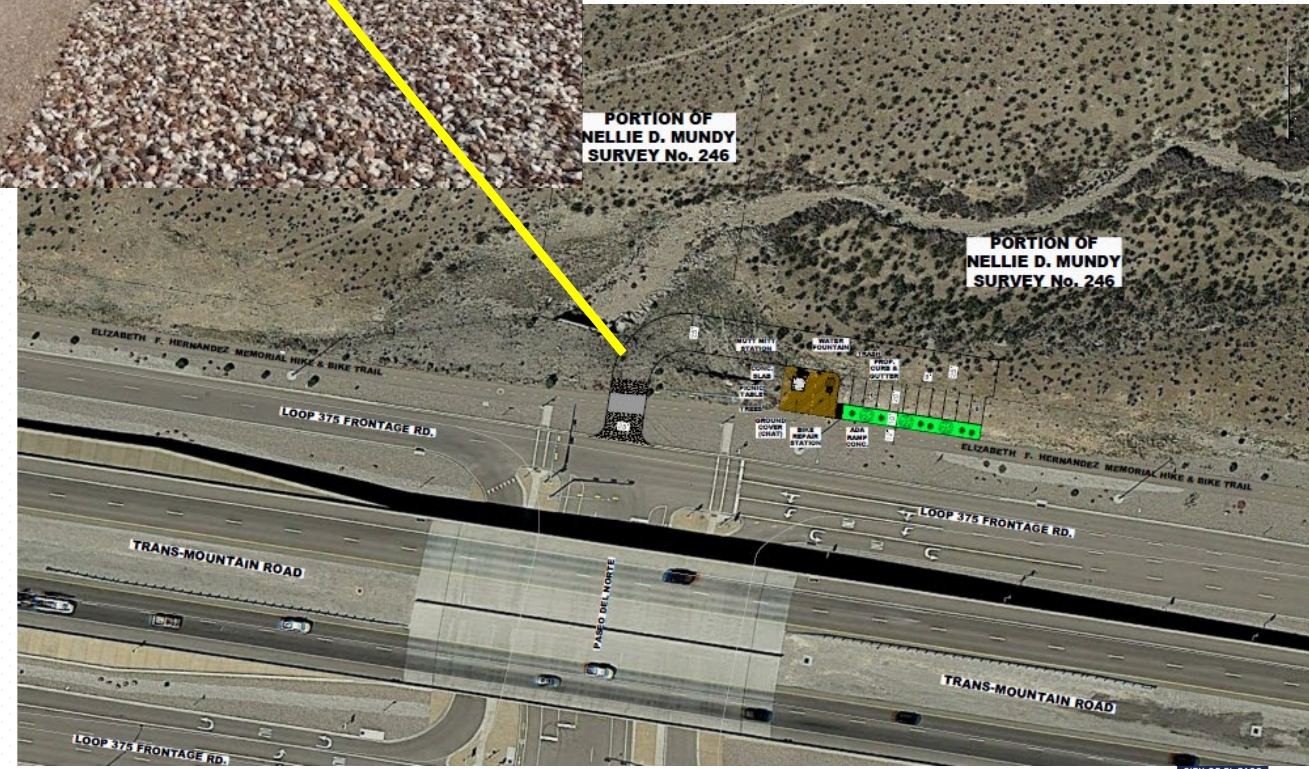
Mountain to River Trail Phase I Implementation



- Continue Elizabeth F Hernandez trail south to I-10 traveling west until reaching the first overpass
- Coordination with TxDOT to go under I-10 and through drainage corridor until surfacing again at Talbot
- Multi-modal crossing at Borderland
- Estimated bid date November

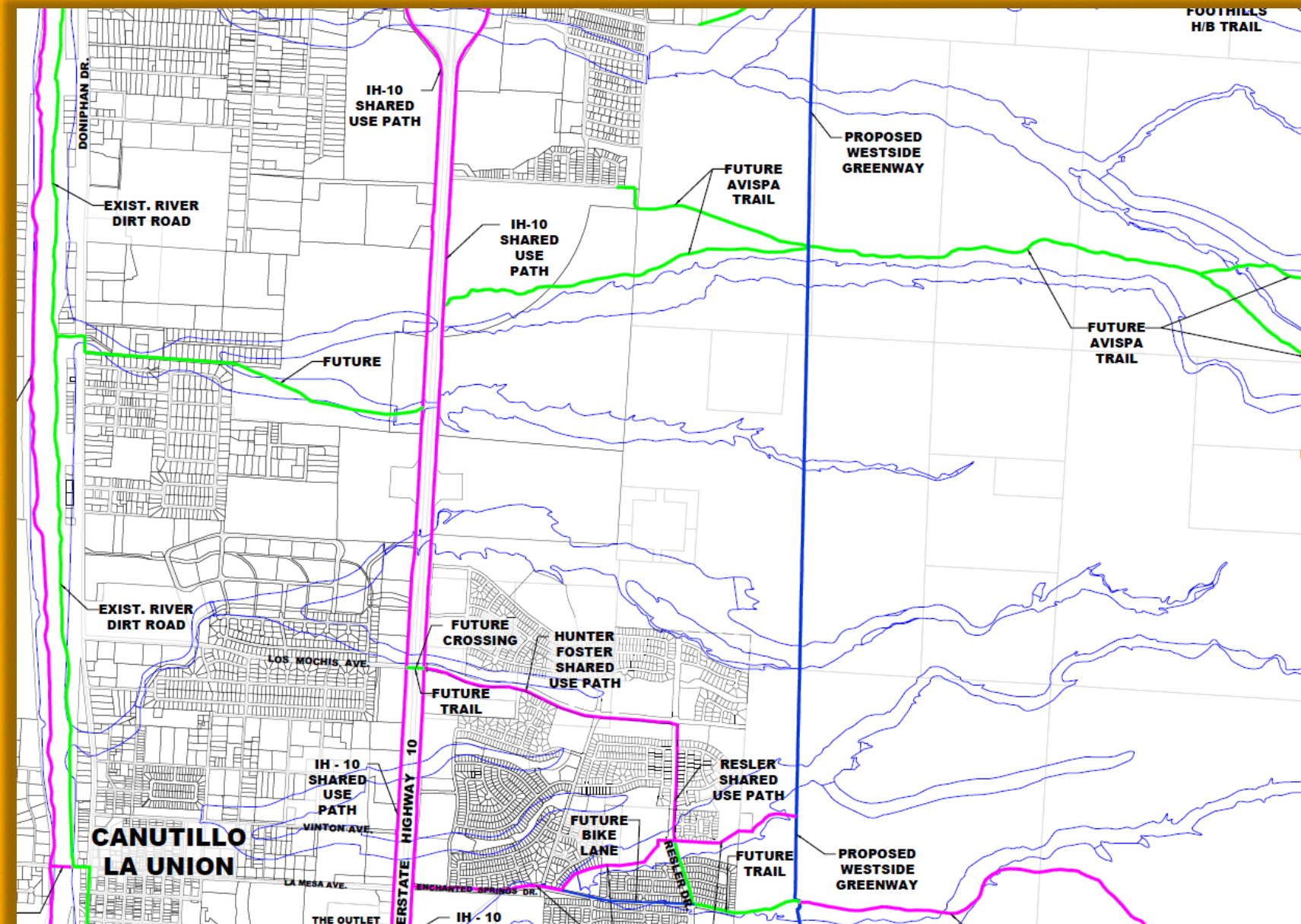
21

- Coordination with TxDOT due to location of trailhead
- Proposed location of trail head behind existing traffic signal
- Trailhead will be combined with bid set for Mountain to River trail



Mountain to River Trail

- Engineering Study to examine feasibility of Avispa Canyon
 - Review entrance to State Park
 - Potential bridge crossing to Rio Grande



Rio Grande Trail North

Connectivity to:

- ✓ Rio Grande Riverpark Trail System
- ✓ Country Club Road
- ✓ Proposed construction award in September



Carolina To Emerson Trail



- **Project Limits:**
 - Carolina To Emerson
- **District:**
 - 3

Ellis Lateral Connection Trail



- **Project Limits:**
 - Ellis Lateral to Valley Creek
- **District:**
 - 1

- Move forward with feasibility study of Avispa Canyon, partner with Camino Real Mobility Authority (RMA)
- Authorization to deprogram the proposed “Carolina to Emerson Trail” and the proposed “Ellis Lateral Connection Trail” and make necessary budget transfers to reprogram the funding from the deprogrammed trails, in the amount of \$537,141.68



Discussion and Action

MISSION



Deliver exceptional services to support a high quality of life and place for our community.

VISION



Develop a vibrant regional economy, safe and beautiful neighborhoods and exceptional recreational, cultural and educational opportunities powered by a high performing government.



VALUES

Integrity, **R**espect, **E**xcellence,
Accountability, **P**eople

MISIÓN



Brindar servicios excepcionales
para respaldar una vida y un
lugar de alta calidad para
nuestra comunidad

VISIÓN



Desarrollar una economía regional
vibrante, vecindarios seguros y
hermosos y oportunidades
recreativas, culturales y educativas
excepcionales impulsadas por un
gobierno de alto desempeño



VALORES

Integridad, Respeto, Excelencia,
Responsabilidad, Personas