



CC 29

9909 Kenworthy St. Rezoning

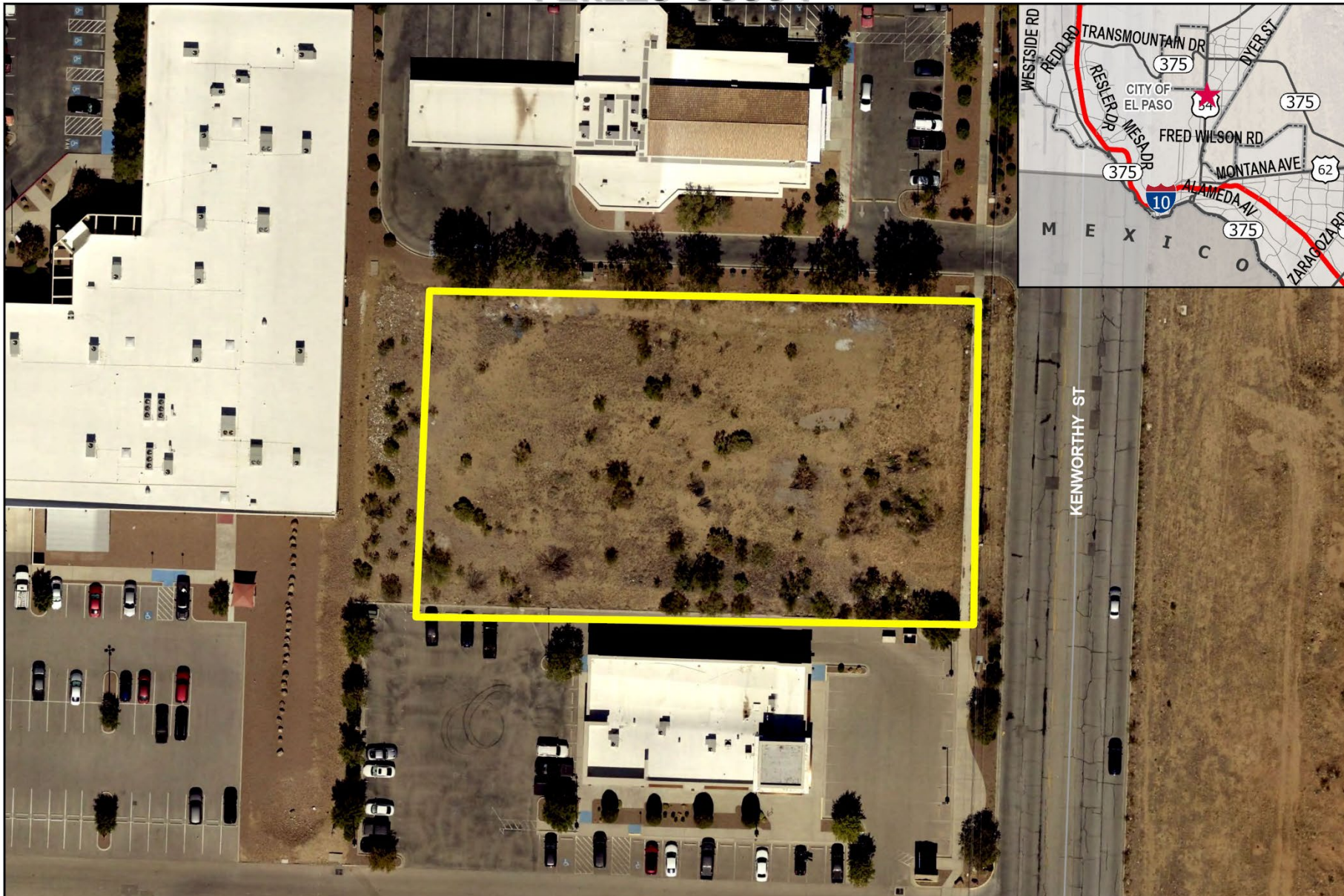
PZRZ25-00004

Strategic Goal 3.

Promote the Visual Image of
El Paso



PZRZ25-00004



Aerial

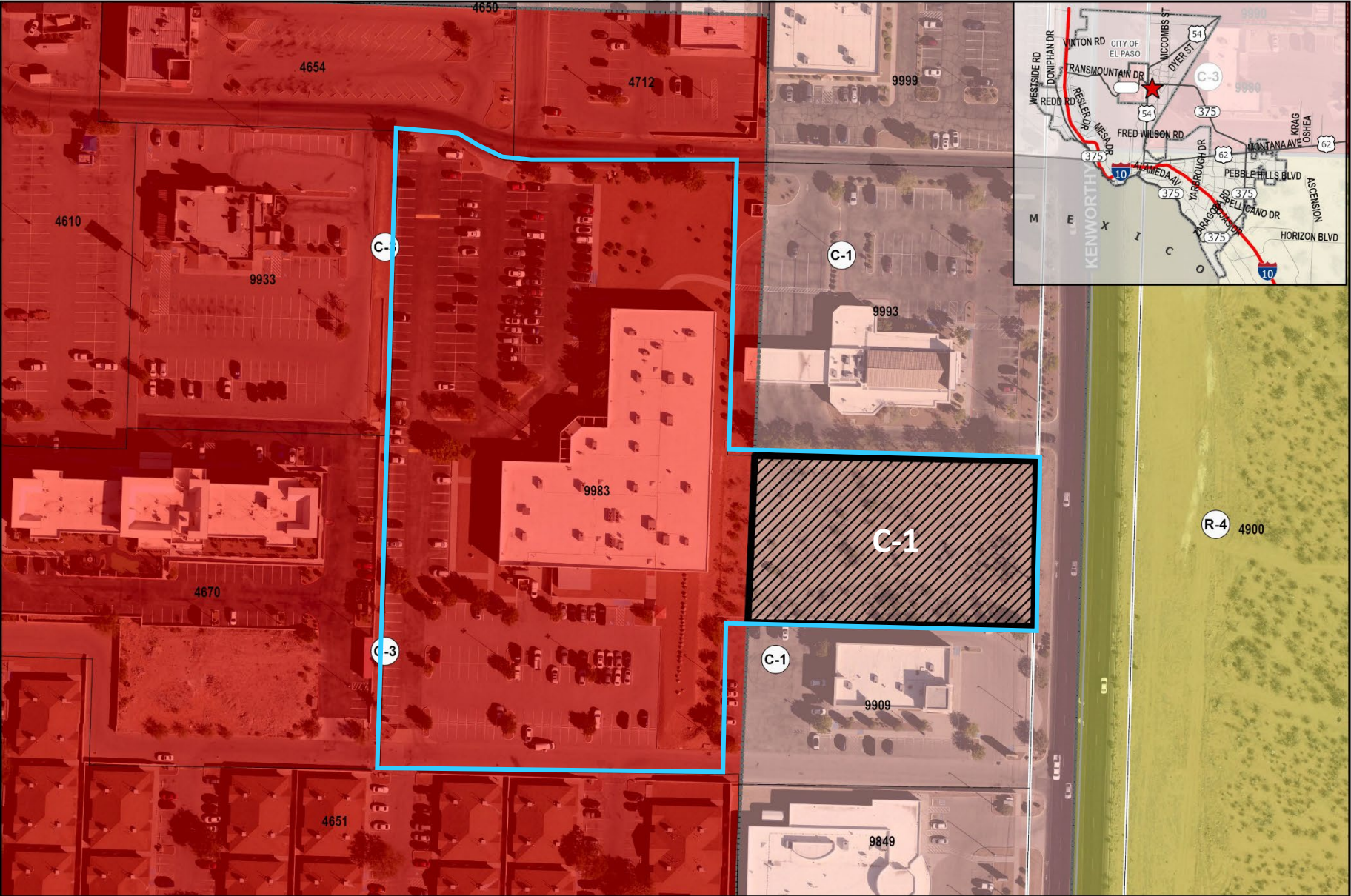
This map is designed for illustrative purposes only. The features depicted here are approximate and more site-specific studies may be required to draw accurate conclusions. Enlargements of this map to scales greater than its original can induce errors and may lead to misinterpretations of the data. The Planning & Inspections Department Planning Division makes no claim to its accuracy or completeness.



 Subject Property

0 15 30 60 90 120
Feet





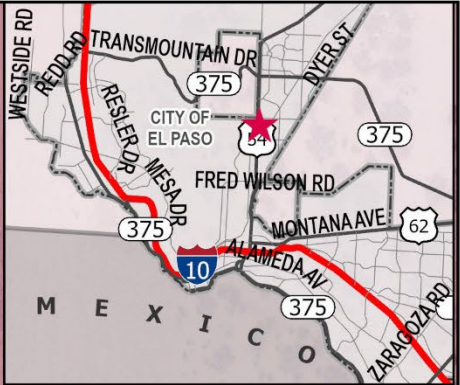
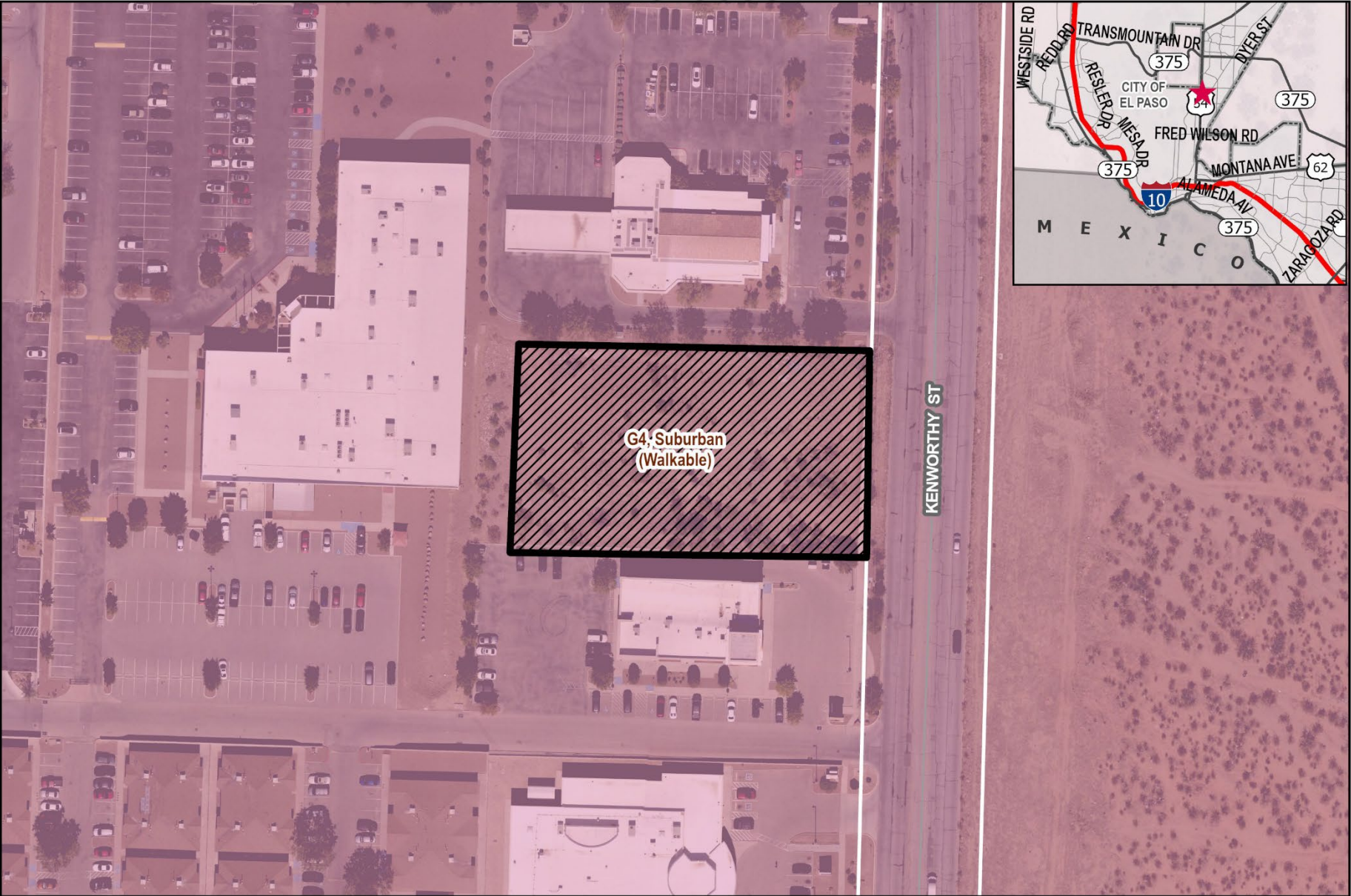
Existing Zoning

This map is designed for illustrative purposes only. The features depicted here are approximate and more site-specific studies may be required to draw accurate conclusions. Enlargements of this map to scales greater than its original can induce errors and may lead to misinterpretations of the data. The Planning & Inspections Department Planning Division makes no claim to its accuracy or completeness.



Subject Property





Future Land Use Map

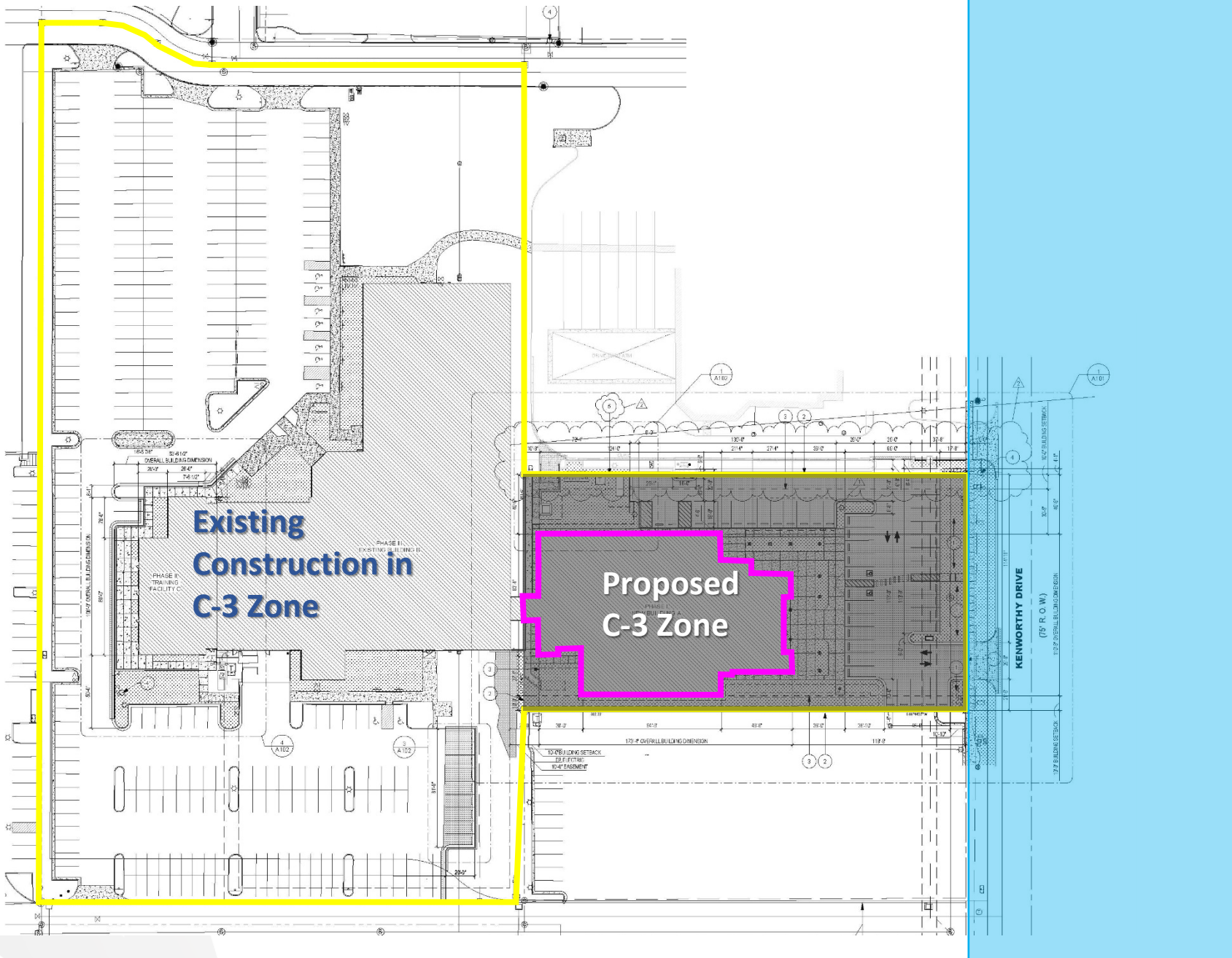
This map is designed for illustrative purposes only. The features depicted here are approximate and more site-specific studies may be required to draw accurate conclusions. Enlargements of this map to scales greater than its original can induce errors and may lead to misinterpretations of the data. The Planning & Inspections Department Planning Division makes no claim to its accuracy or completeness.



 Subject Property



Conceptual Plan



Subject Property



Surrounding Development



W



N



S

Public Input

- Notices were mailed to property owners within 300 feet on March 28, 2025.
- The Planning Division has not received any communications in support or opposition to the request.





Recommendation

- Staff and CPC (7-0) recommended **Approval** of the rezoning request.



Mission

Deliver exceptional services to support a high quality of life and place for our community



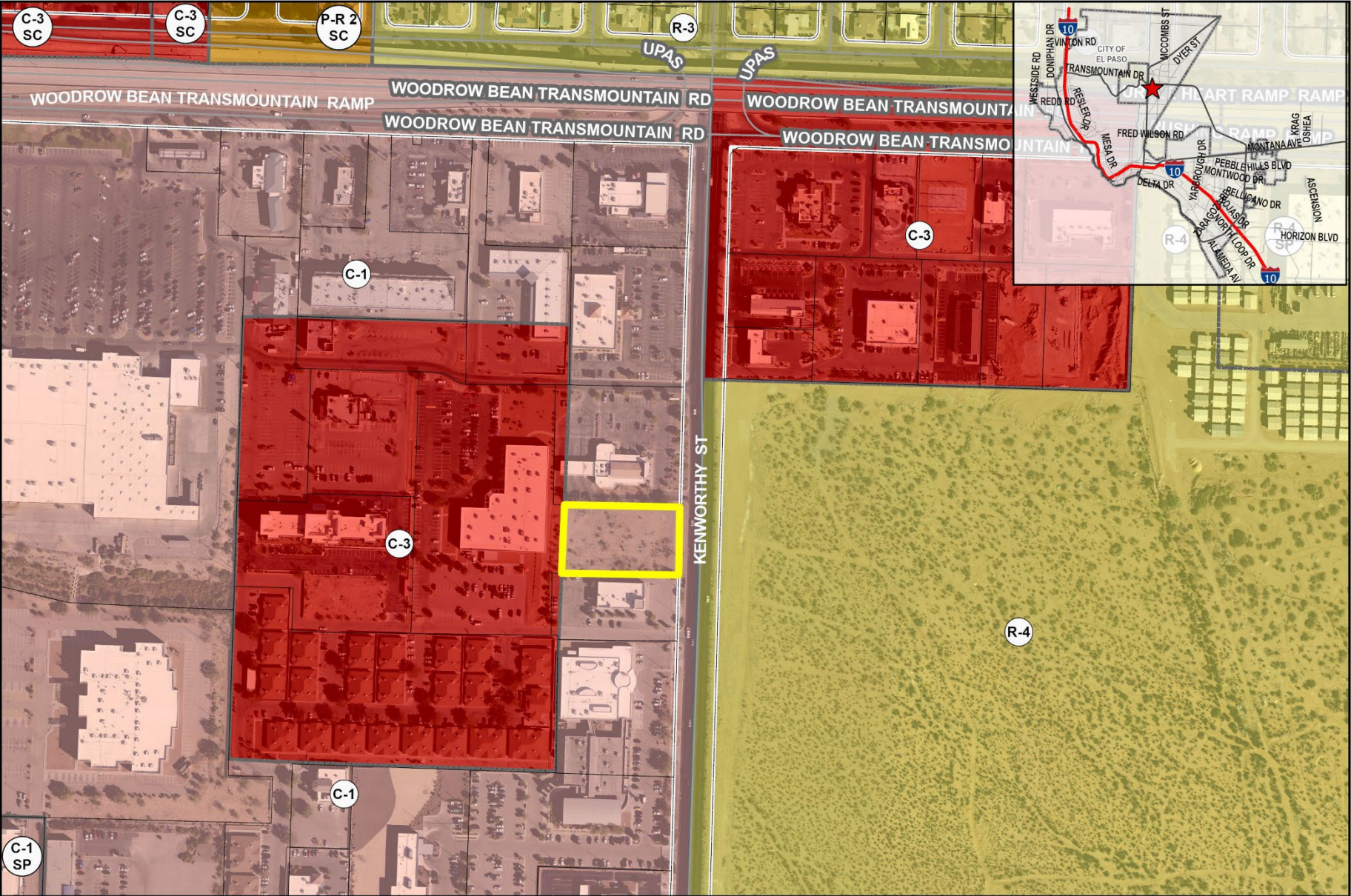
Vision

Develop a vibrant regional economy, safe and beautiful neighborhoods and exceptional recreational, cultural and educational opportunities powered by a high performing government



Values

Integrity, Respect, Excellence, Accountability, People



Existing Zoning

This map is designed for illustrative purposes only. The features depicted here are approximate and more site-specific studies may be required to draw accurate conclusions. Enlargements of this map to scales greater than its original can induce errors and may lead to misinterpretations of the data. The Planning & Inspections Department Planning Division makes no claim to its accuracy or completeness.



 Subject Property

