



CITY OF EL PASO

# 2022 Signal Synchronization Streets and Maintenance Dept.

City Council Work Session May 6, 2024

Operations Management Update

This text box is to remind you about the ASL translator service. Do NOT add any info in this space.

REMOVE THIS BOX ONCE THE PRESENTATION IS FINALIZED.

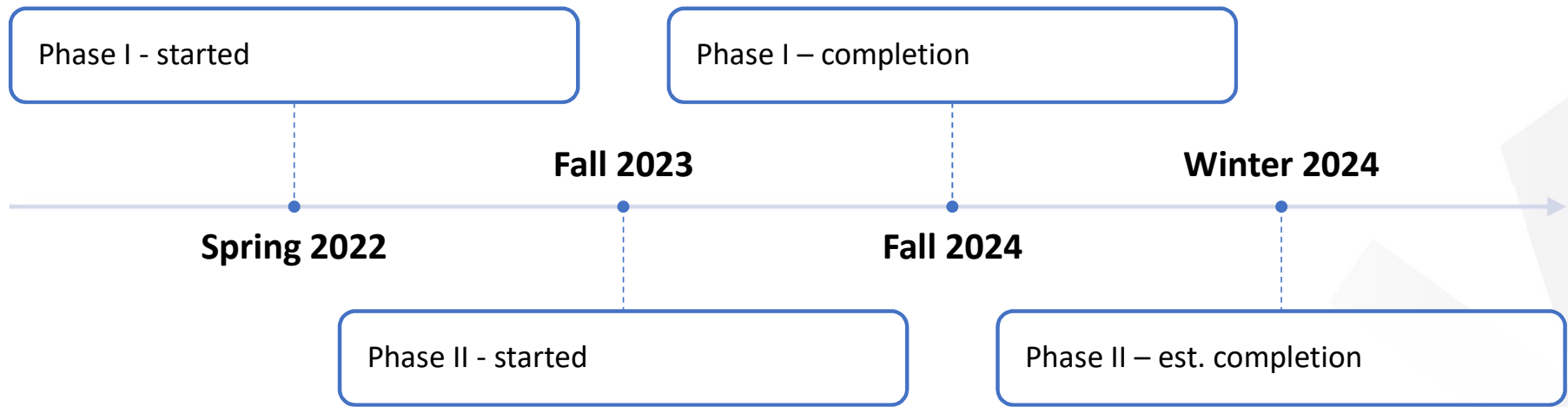
# Strategic Plan

Goal 7: Enhance and Sustain El Paso's Infrastructure Network

7.3 – Enhance regional comprehensive transportation system

# 2022 Citywide Signal Synchronization Program

Two Phase Project - \$3,450,000 Total Project Budget



# City Signalized Intersection Inventory

---

**713** Signalized Intersections and Pedestrian Crossings

---

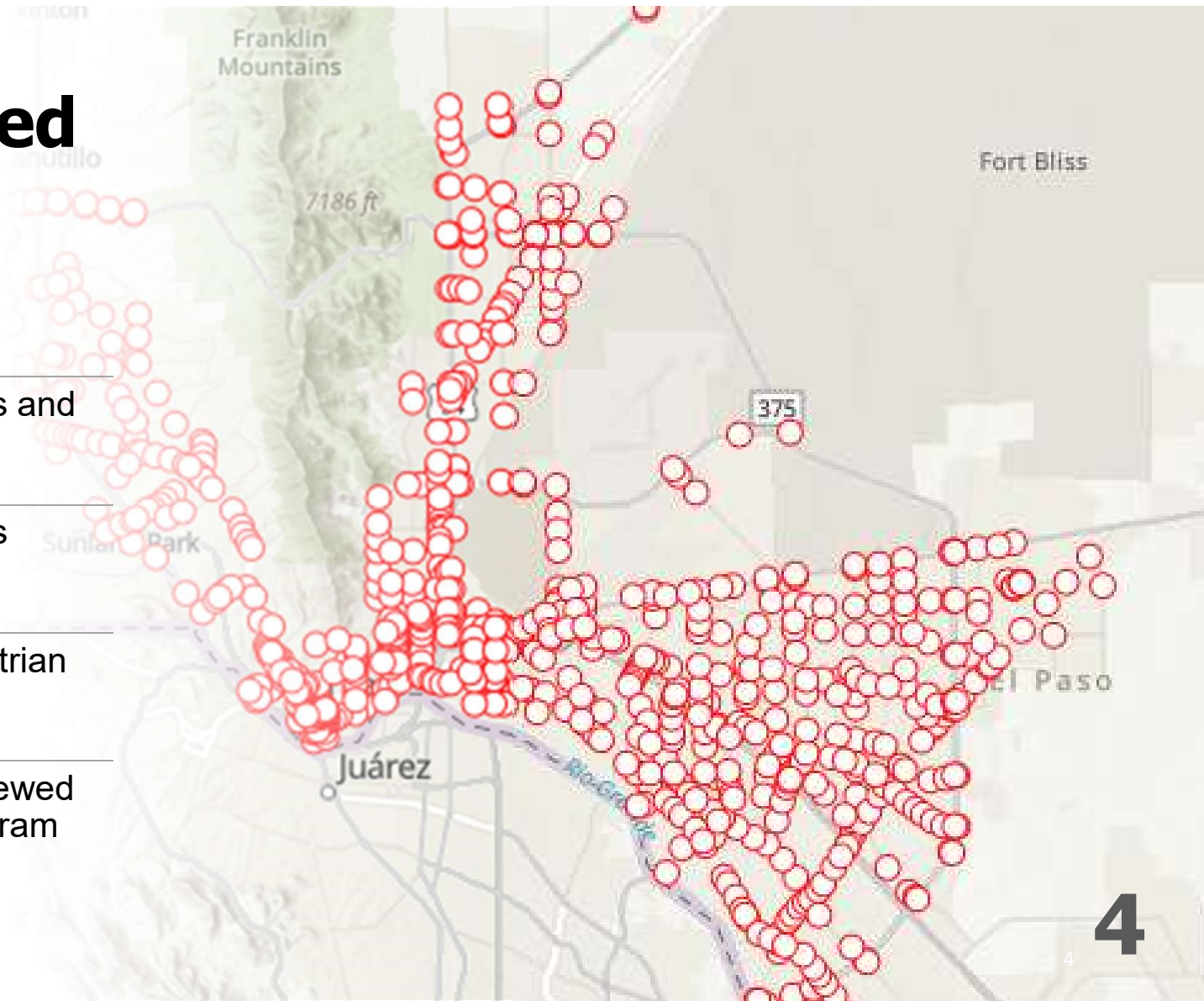
**685** Signalized Intersections

---

**28** Dedicated HAWK Pedestrian Crossings

---

**654** Intersections to be reviewed in the Synchronization Program



# Traffic Signal Synchronization

**Coordination of green light time to optimize the flow of vehicular traffic**



Improves Traffic Flow



Reduces  
Congestion/Travel Time

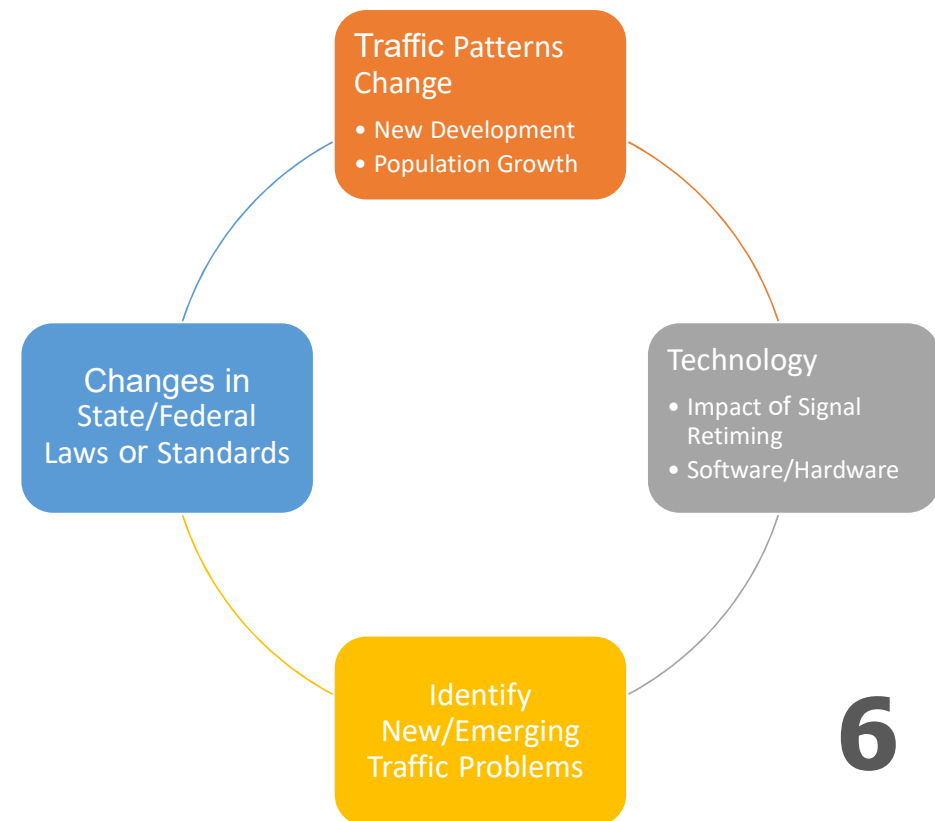


Identifies Possible  
Safety Improvements



Lower Vehicle  
Emissions

# Why Do We Need Synchronization?





# Optimal Signal Synchronization

---

On Site review and inspection

---

Study turning and movement counts

---

Evaluate traffic volumes

---

Evaluate pedestrian crossing times

---

Balancing needs of all modes of transportation



# 2022 Citywide Signal Synchronization Phase 1

---

\$1,800,000 Expenditures

---

362 Intersections

---

Northeast and Central North  
System

---

Downtown and Central South  
System

---

East and Far East System





# 2022 Citywide Signal Synchronization Phase 1 - Northeast and Central North System

## Major Corridors Reviewed

---

Alabama

---

---

Piedras/Raynor

---

---

Dyer/Diana/Hondo Pass

---

---

Railroad/McCombs

---

---

Transmountain East & West

---

---

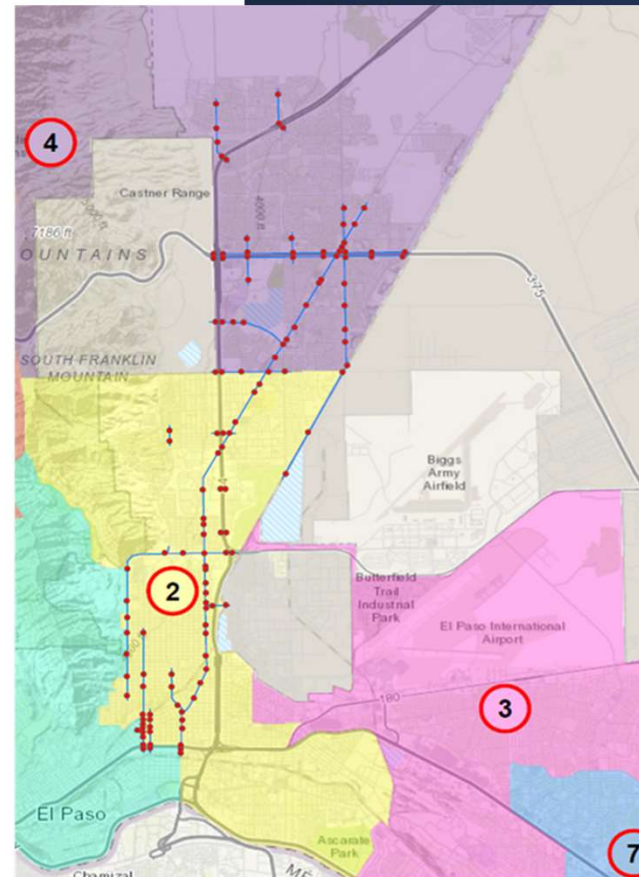
Martin Luther King Jr.

---

---

Sean Haggerty

---



# 2022 Citywide Signal Synchronization Phase 1 - Northeast and Central North System

---

**135** Intersections

---

Total Delay Decrease of **7%** for all vehicle hours

---

Total Stops Decrease of **4%** for all vehicles

---

Total Travel Time Decrease of **3%** for all vehicle hours



# 2022 Citywide Signal Synchronization

## Phase 1 - Downtown and Central South System

### Major Corridors Reviewed

---

Paisano Dr (Santa Fe to St. St Vrain)

---

Cotton St (Arizona Ave to Delta Dr.)

---

Mesa St (River to Paisano)

---

Yandell Dr (Campbell to Santa Fe)

---

Stanton St (California to 7<sup>th</sup>)

---

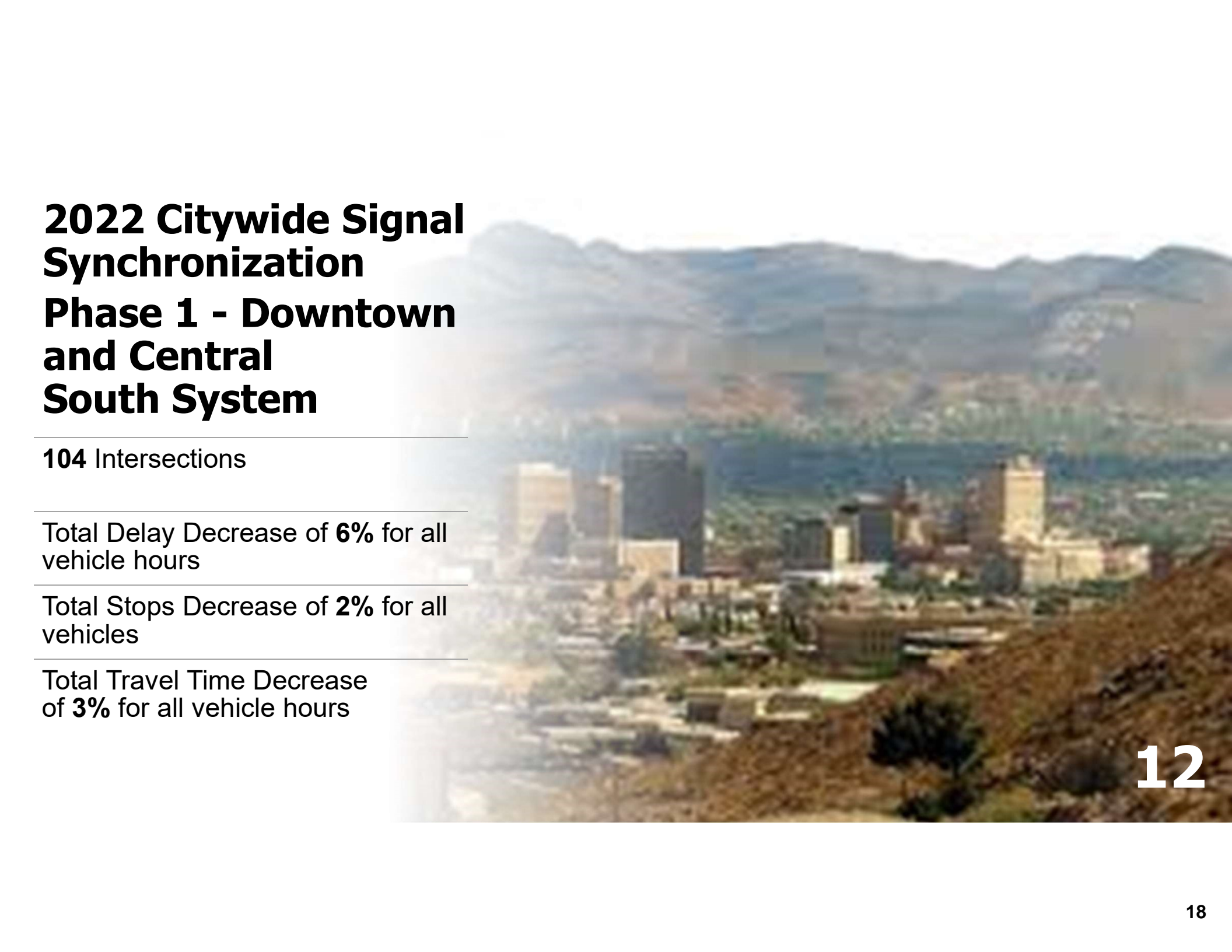
Oregon St (Arizona to 4<sup>th</sup>)

---

Montana Ave (Campbell to Oregon)





An aerial photograph of a city, likely Phoenix, Arizona, showing the downtown skyline with several tall buildings. The city is surrounded by arid, hilly terrain with sparse vegetation. In the background, a range of mountains is visible under a clear sky. The overall tone is warm and slightly hazy.

# **2022 Citywide Signal Synchronization**

## **Phase 1 - Downtown and Central South System**

---

**104** Intersections

---

Total Delay Decrease of **6%** for all vehicle hours

---

Total Stops Decrease of **2%** for all vehicles

---

Total Travel Time Decrease of **3%** for all vehicle hours



# 2022 Citywide Signal Synchronization Phase 1 - East and Far East System

## Major Corridors Reviewed

---

Lee Trevino Dr.

---

George Dieter Dr.

---

Pebble Hills Blvd.

---

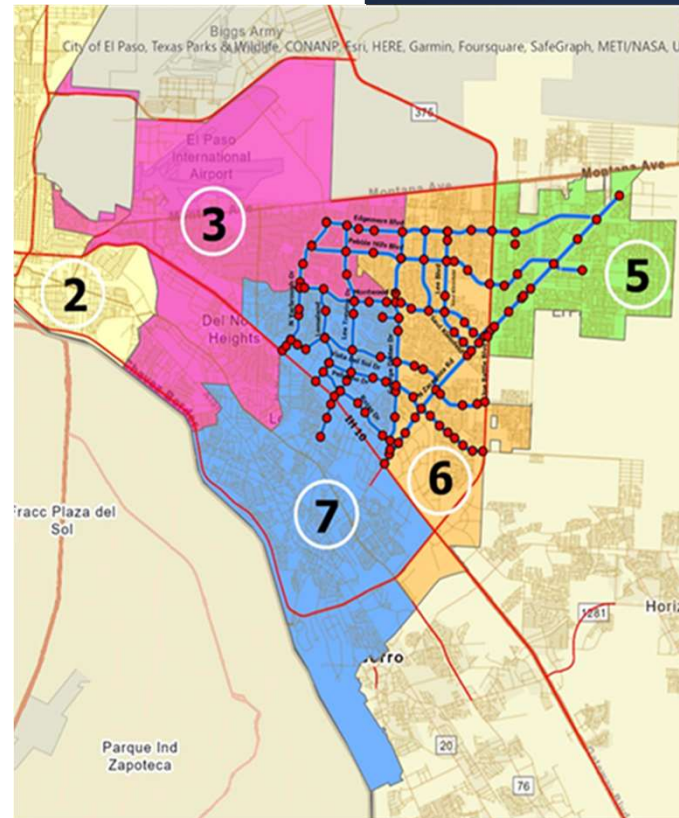
Yarbrough Dr.

---

Zaragoza Rd.

---

Montwood Dr.



# 2022 Citywide Signal Synchronization Phase 1 - East and Far East System

---

**123** Intersections

---

Total Delay Decrease of **6%** for all vehicle hours

---

Total Stops Decrease of **1%** for all vehicles

---

Total Travel Time Decrease of **3%** for all vehicle hours



# 2022 Citywide Signal Synchronization Phase 1 Annual Savings/Results

---

**\$13 million** in Vehicle Costs

---

**401,000** Travel Hours

---

**383,000** Gallons of Fuel

---

**36,301** Kg of Carbon Emissions

Source: Walter P. Moore, AECOM, and Kimley Horn Engineering Consultants Synchronization Study

# QUESTIONS



## MISSION



Deliver exceptional services to support a high quality of life and place for our community.

## VISION



Develop a vibrant regional economy, safe and beautiful neighborhoods and exceptional recreational, cultural and educational opportunities powered by a high performing government.



## VALUES

Integrity, Respect, Excellence,  
Accountability, People

This text box is to remind you about the ASL translator service. Do NOT add any info in this space.

REMOVE THIS BOX ONCE THE PRESENTATION IS FINALIZED.

## MISIÓN



Brindar servicios excepcionales para respaldar una vida y un lugar de alta calidad para nuestra comunidad

## VISIÓN



Desarrollar una economía regional vibrante, vecindarios seguros y hermosos y oportunidades recreativas, culturales y educativas excepcionales impulsadas por un gobierno de alto desempeño



## VALORES

Integridad, Respeto, Excelencia,  
Responsabilidad, Personas

This text box is to remind you about the ASL translator service. Do NOT add any info in this space.

REMOVE THIS BOX ONCE THE PRESENTATION IS FINALIZED.