



ITEM 23

# 12285 Pellicano Drive Special Permit

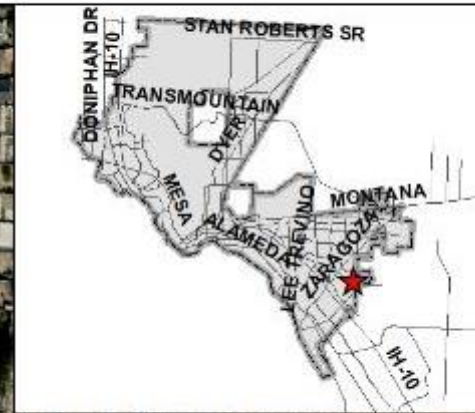
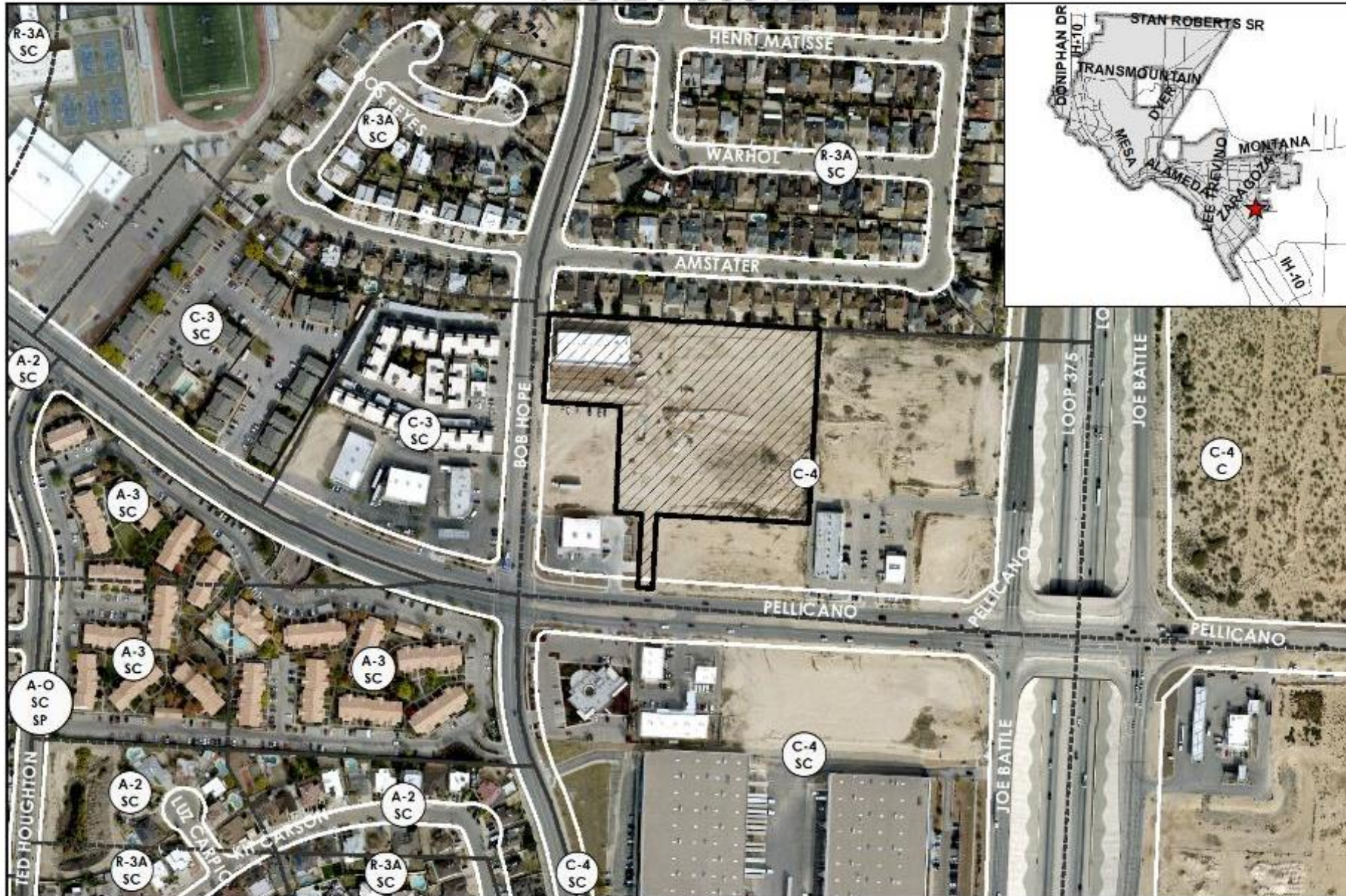
PZST21-00012



**Strategic Goal 3.**


Promote the Visual Image of  
El Paso

# Aerial



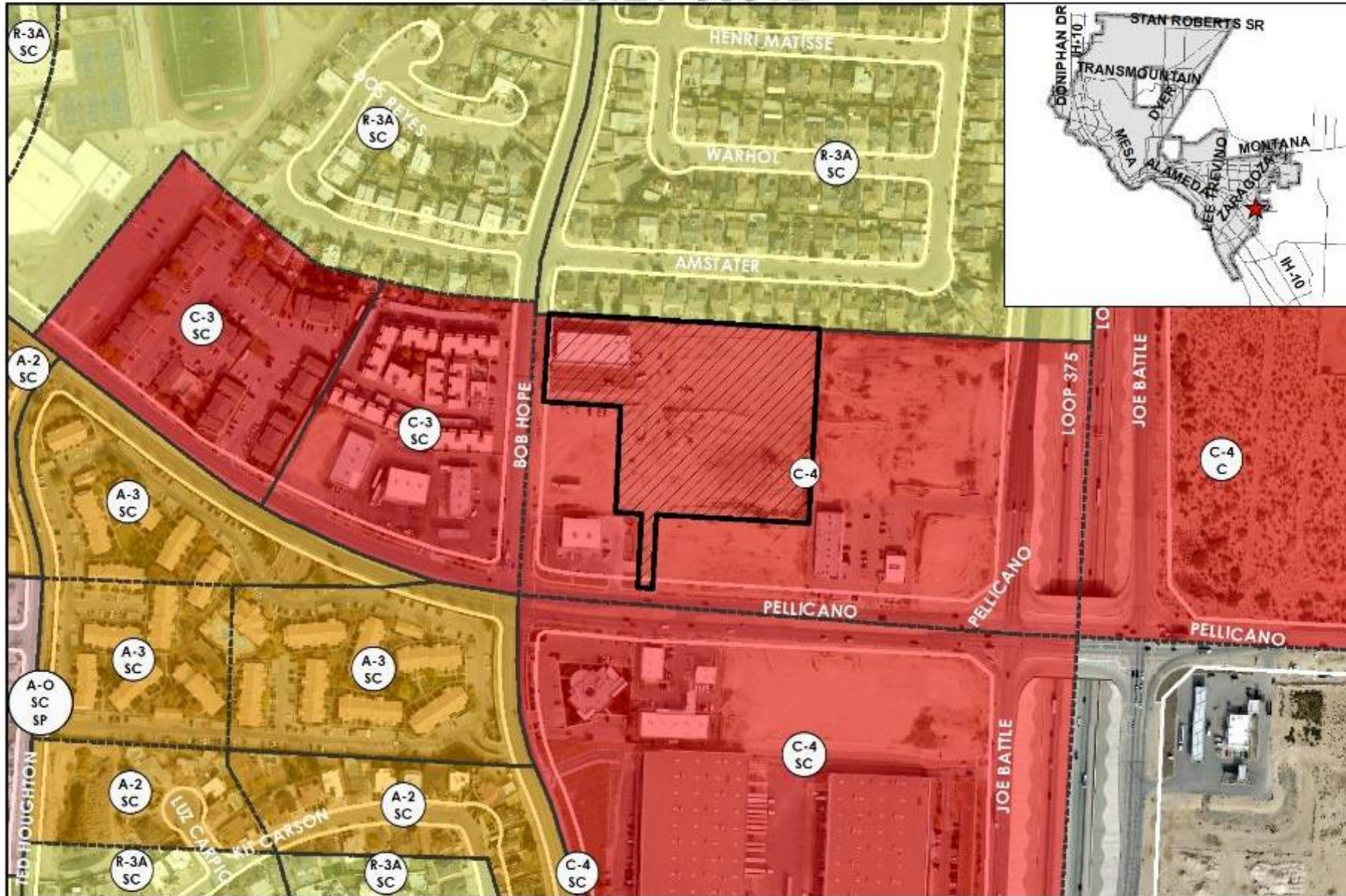
This map is designed for illustrative purposes only. The features depicted here are approximate and more site-specific studies may be required to draw accurate conclusions. Any errors of this map to order greater than its original can induce errors and may lead to misinterpretations of the data. The Planning & Inspection Department Planning Division makes no claim to its accuracy or completeness.



 Subject Property




# PZST21-00012

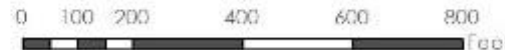


## Existing Zoning

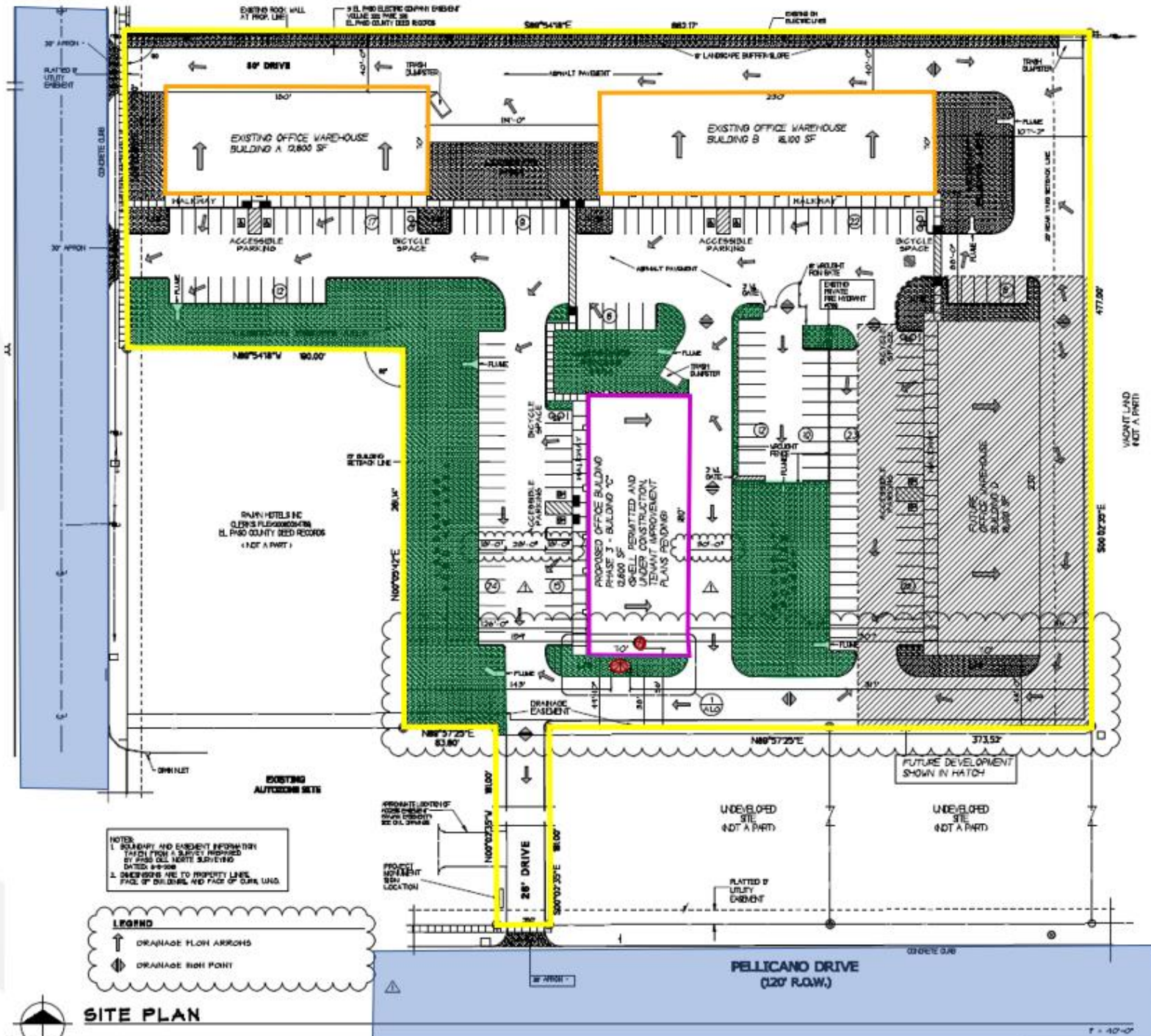
This map is designed for illustrative purposes only. The features depicted here are approximate and more site-specific studies may be required to draw accurate conclusions. Any errors of this map to order greater than its original can induce errors and may lead to misinterpretations of the data. The Planning & Inspection Department Planning Division makes no claim to its accuracy or completeness.

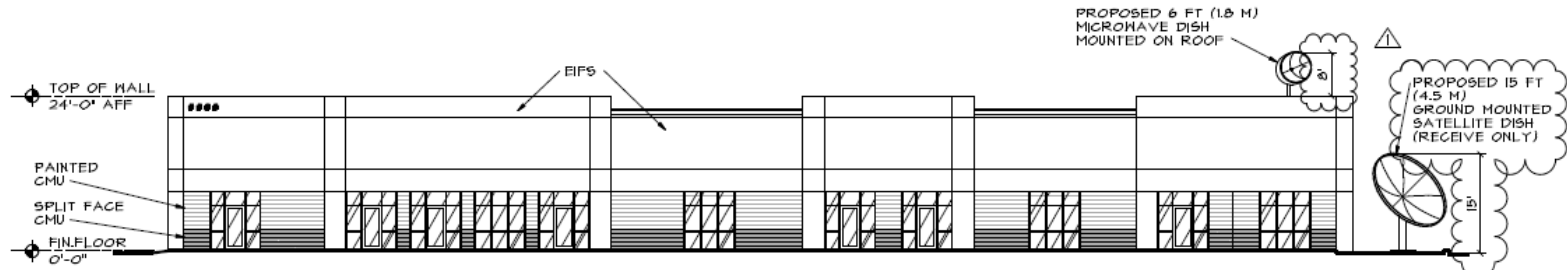


 Subject Property



# Detailed Site Plan





**BUILDING 'C'**  
**FRONT ELEVATION (WEST)**

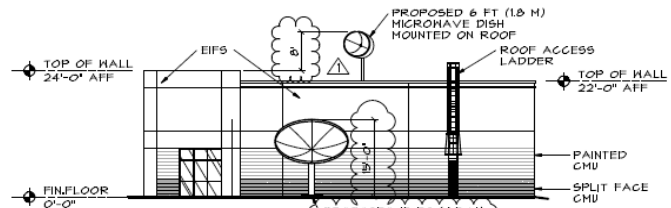
NOTE: SATELLITE LOCATION SHOWN IS APPROXIMATE.  
FINAL WILL BE FIELD COORDINATED

4  
A.I.C.

5  
A.I.C.

N.T.S.

# Elevations

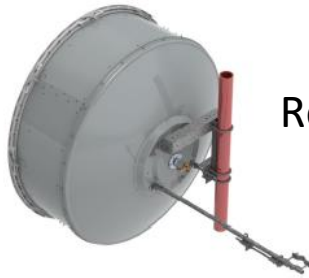


**BUILDING 'C'**  
**SIDE ELEVATION (SOUTH)**

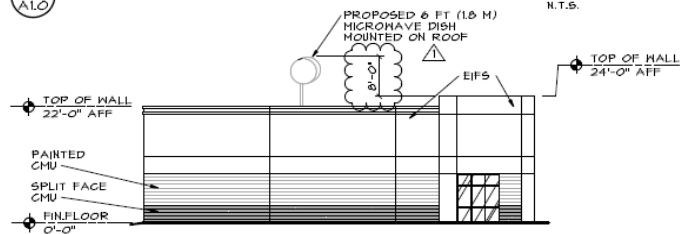
NOTE: SATELLITE LOCATION SHOWN IS APPROXIMATE.  
FINAL WILL BE FIELD COORDINATED

3  
A.I.C.

N.T.S.



Roof-mounted

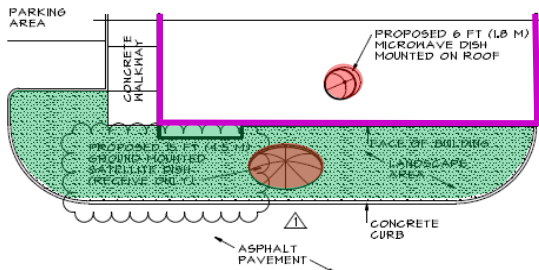


**BUILDING 'C'**  
**SIDE ELEVATION (NORTH)**

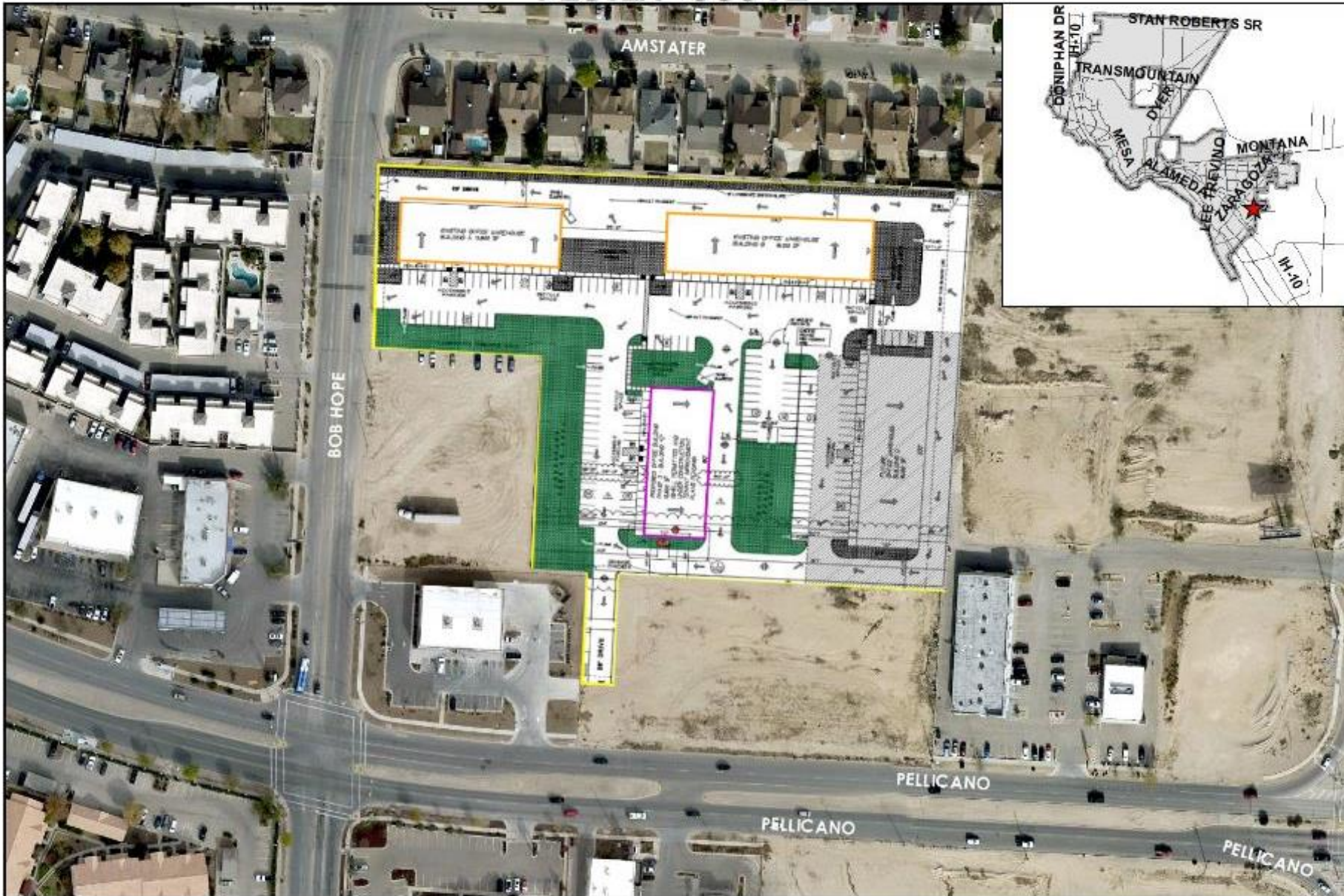
NOTE: SATELLITE LOCATION SHOWN IS APPROXIMATE.  
FINAL WILL BE FIELD COORDINATED

2  
A.I.C.

N.T.S.



Ground-mounted



# Aerial with Site Plan

This map is designed for illustrative purposes only. The features depicted here are approximate and more site-specific studies may be required to draw accurate conclusions. The geographic data of this map is older than its original data source areas and may lead to misinterpretations of the data. The Planning & Inspections Department Planning Division makes no claim to its accuracy or completeness.





# Subject Property

# Surrounding Development



N



W



S

E





# Public Input

- Public notices were mailed to property owners within 300 feet on September 30, 2021.
- As of November 4, 2021, the Planning Division has not received any communication from the public.





## Recommendation

- Staff and CPC recommend approval of the special permit request.



## Mission

Deliver exceptional services to support a high quality of life and place for our community



## Vision

Develop a vibrant regional economy, safe and beautiful neighborhoods and exceptional recreational, cultural and educational opportunities powered by a high performing government



## Values

Integrity, Respect, Excellence, Accountability, People