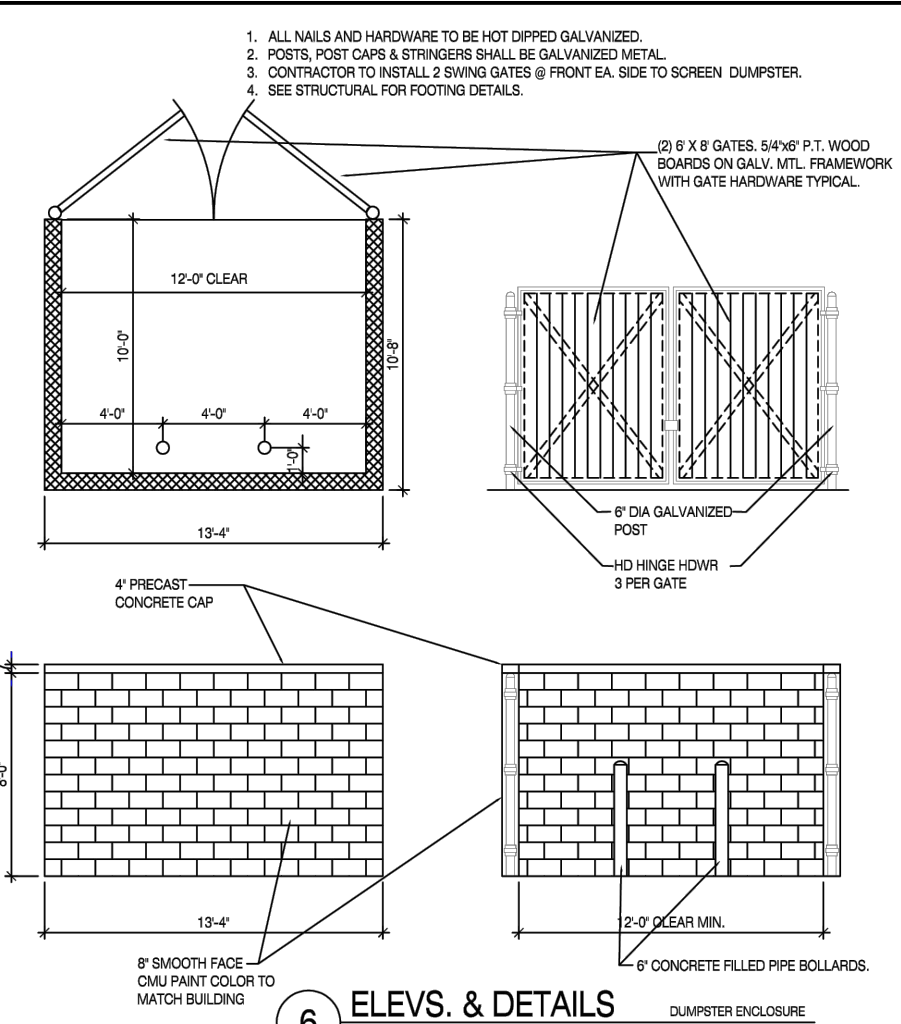
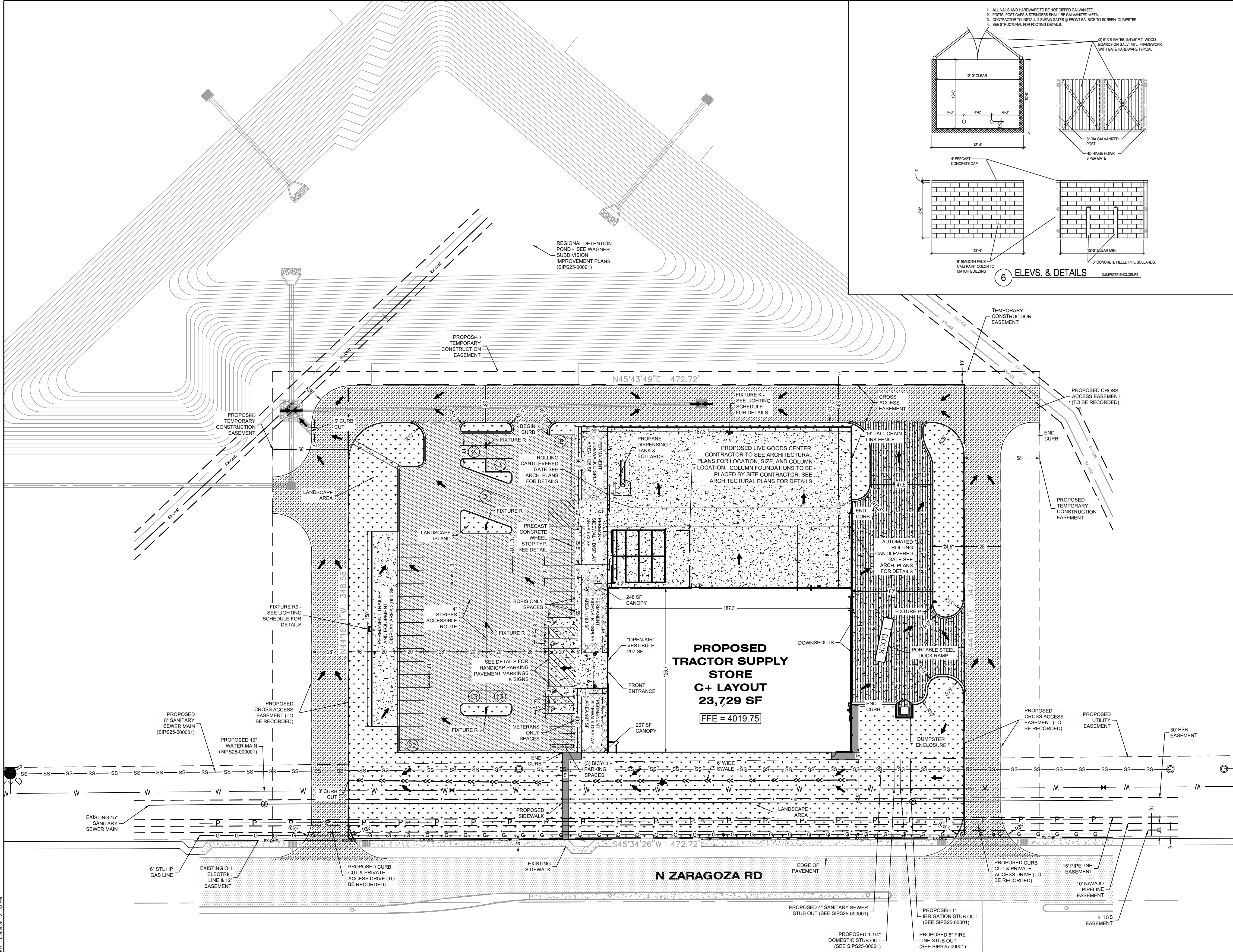
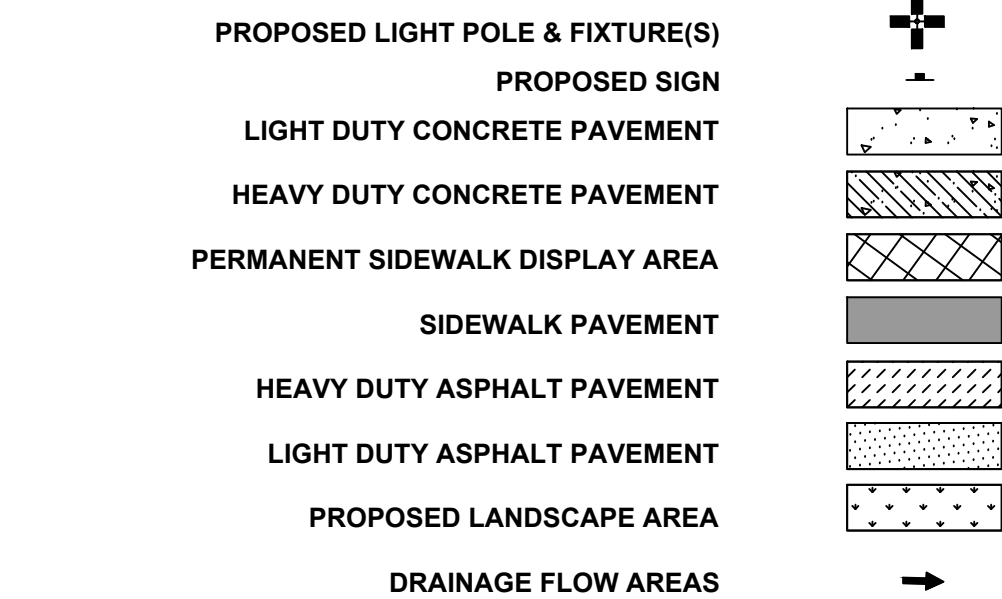
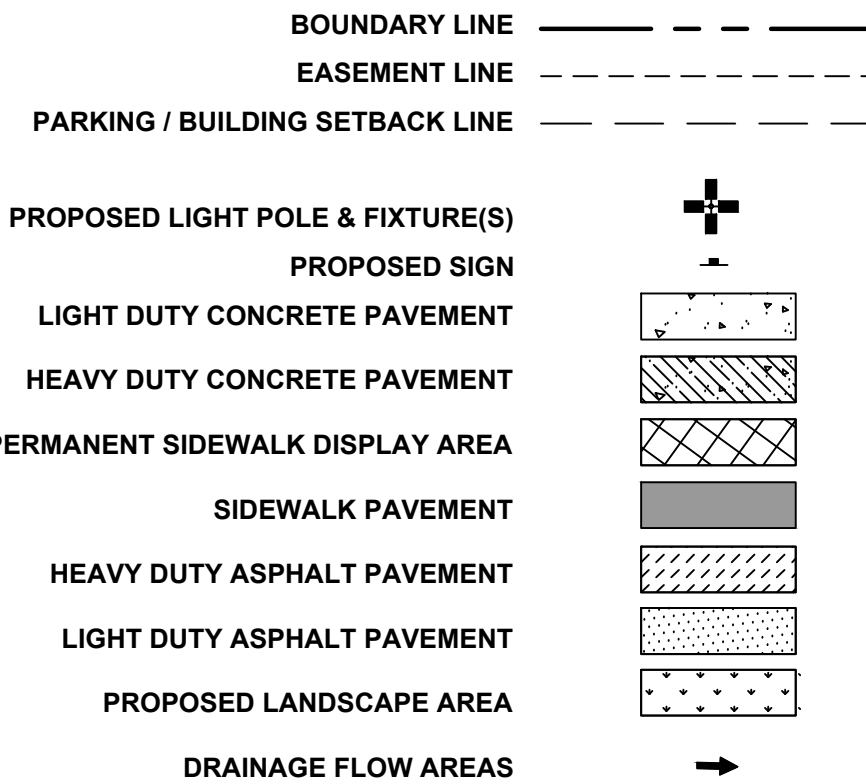


FILE NAME: L03_216_003.dwg DATE: 11/24/2025 11:24:03 AM DATE PLOTTED: 11/24/2025 11:24:03 AM



LEGEND



- NOTES:**
1. LIGHTING LOCATIONS ARE SHOWN FOR ILLUSTRATIVE PURPOSES ONLY. REFER TO ELECTRICAL PLANS TO CONFIRM LOCATIONS AND FOR PHOTOMETRIC VALUES.
 2. STRIPING ON CONCRETE TO BE YELLOW AND STRIPING ON ASPHALT TO BE WHITE.
 3. DIMENSIONS ARE SHOWN TO FACE OF CURB.
 4. DETECTABLE WARNING SURFACES (TRUNCATED DOMES) SHALL CONTRAST VISUALLY WITH ADJACENT WALKING SURFACES - EITHER LIGHT-ON-DARK, OR DARK-ON-LIGHT.
 5. ANY DAMAGED STRUCTURE WITHIN THE CIYT RIGHT-OF-WAY MUST BE RESTORED TO THE SAME OR BETTER CONDITION.
- PARKING LOT PAINT SPECIFICATIONS - 15 MIL APPLICATION (0.015 INCH THICKNESS):**
1. NEW PAVEMENT SURFACE TO CURE FOR A PERIOD OF NOT LESS THAN 14 DAYS BEFORE APPLICATION OF MARKING MATERIALS.
 2. REMOVE ALL DIRT, GRAVEL, DEBRIS, VEGETATION, OR OTHER MISCELLANEOUS OBJECTS FROM THE SURFACE WITH A BROOM TRUCK OR EQUIVALENT RIGOROUS METHOD. PROVIDE A CLEAN, DUST-FREE AND COMPLETELY DRY SURFACE FOR PAINT APPLICATION. DO NOT APPLY PAINT OVER EXISTING TAPE MARKINGS.
 3. CONFIRM & RECORD PROPER AIR AND SURFACE TEMPERATURES OF 55° AND RISING AND LESS THAN 95°. IF THE SURFACE TEMPERATURE IS NOT WITHIN THE TEMPERATURE RANGE OR IF THE PAINT APPLICATION IS DONE UNDER ADVERSE CONDITIONS (AS DETERMINED BY THE CONSTRUCTION PROJECT MANAGER) SUCH AS ABOVE 75% HUMIDITY, NIGHT STRIPING, ETC. IN ORDER TO MEET TSC OPENING SCHEDULE, CONTRACTOR TO RE-SCHEDULE AND COMPLETE SURFACE STRIPING UNDER PROPER CONDITIONS A MINIMUM OF 30 DAYS PRIOR TO THE EXPIRATION OF THE (1) ONE YEAR CONSTRUCTION WARRANTY.
 4. PROVIDE A 15 MIL THICK 4" WIDE CONTINUOUS STRIPE WHERE AND IN THE COLOR INDICATED, MINIMUM OF (2) TWO COATS.
 5. PROVIDE PRIMER AND SEALER TO BE APPLIED PER THE MANUFACTURER'S RECOMMENDATIONS ON ALL CONCRETE SURFACES AND ON ASPHALT SURFACES THAT ARE MORE THAN TWO YEARS OLD, OXIDIZED AND/OR HAVE AGGREGATE EXPOSED.
 6. SEE ARCHITECTURAL PLANS FOR VETERAN AND ON-LINE ORDER PARKING SPACES.

SITE/ZONING DATA SUMMARY

PARKING SUMMARY		SITE/ZONING DATA SUMMARY	
REQUIRED VEHICLE PARKING SPACES		SITE AREA: ±3.78 AC	
MIN = 66 (1 SP PER 360 SF GFA)		ZONING CLASSIFICATION:	
MAX = 95 (1 SP PER 250 SF GFA)		EXISTING: C4	
70 REGULAR SPACES		PROPOSED: C4	
4 HANDICAPPED SPACES (Including 1 van accessible space)		MINIMUM YARD REQUIREMENTS:	
74 TOTAL SPACES PROVIDED		FRONT: 0'	
REQUIRED BICYCLE PARKING = 3 SP		SIDE: 10' WHEN ABUTTING RESIDENTIAL OR APARTMENT	
REQUIRED TRUCK LOADING = 1 SP PER 50,000 SF GFA		REAR: 10'	
		MAXIMUM BUILDING HEIGHT = 60'	
		REQUIRED FLOOR AREA RATIO = 1.50	
		BUILDING COVERAGE: 20.6%	
		IMPERVIOUS COVERAGE: 69.6%	

LANDSCAPING SUMMARY

LOT AREA = 164,442 SF
BUILDING AREA = 23,729 SF
TRAILER & EQUIPMENT DISPLAY AREA = 3,000 SF
FENCED OUTDOOR DISPLAY AREA = 23,123 SF
BUILDING FOOTPRINT (INCLUDING APPROVED OUTDOOR DISPLAY AREAS) = 49,852 SF (23,729 + 3,000 + 23,123)
LANDSCAPE AREA REQUIRED = 17,189 SF (164,442 - 49,852 X .15)
LANDSCAPE AREA PROVIDED = 47,010 SF
REQUIRED UNITS OF PLANT MATERIAL = 18 (1 PER 1,000 SF OF LANDSCAPE AREA)

LEGAL DESCRIPTION

DESCRIPTION OF A PARCEL OF LAND BEING A PORTION OF A 93.28 ACRE PARCEL (INSTRUMENT NO. 20230041835, REAL PROPERTY RECORDS OF EL PASO COUNTY, TEXAS), IN SECTION 36, BLOCK 79, TOWNSHIP 2, TEXAS AND PACIFIC RAILWAY COMPANY SURVEYS, EL PASO COUNTY, TEXAS, AND BEING MORE PARTICULARLY DESCRIBED AS FOLLOWS:

COMMENCING, FOR REFERENCE AT A FOUND 2" PIPE (ORIGINAL CORNER) FOR THE COMMON CORNER OF SECTIONS 25, 26, 35 AND 36, BLOCK 79, TOWNSHIP 2, TEXAS AND PACIFIC RAILWAY COMPANY SURVEYS, EL PASO COUNTY, TEXAS; **WHENCE**, A FOUND IRON WITH ALUMINUM CAP STAMPED "TEXAS DEPARTMENT OF TRANSPORTATION SAFETY PROPERTY CORNER" BEARS S 02° 29' 25" W (8' 00" 33' 00" E - DEED), A DISTANCE OF 1,292.07 FEET; **THENCE**, S 02° 29' 25" W (S 00° 33' 00" E - DEED), ALONG THE COMMON LINE OF SECTIONS 35 AND 36, A DISTANCE OF 731.17 FEET TO A POINT; **THENCE**, S 87° 30' 35" E, LEAVING SAID COMMON LINE OF SECTIONS 35 AND 36, A DISTANCE OF 24.60 FEET TO THE **POINT OF BEGINNING** OF THIS DESCRIPTION;

THENCE, N 45° 43' 49" E, A DISTANCE OF 472.72 FEET TO A POINT;

THENCE, S 44° 16' 11" E, A DISTANCE OF 347.29 FEET TO A POINT ON THE NORTHERLY RIGHT-OF-WAY LINE OF F.M. HIGHWAY NO. 659 (ZARAGOZA BOULEVARD) (VOLUME 611, PAGE 599);

THENCE, S 45° 34' 26" W (S 42° 33' 00" W - DEED), ALONG SAID NORTHERLY RIGHT-OF-WAY LINE, A DISTANCE OF 472.72 FEET TO A POINT;

THENCE, N 44° 18' 11" W, LEAVING SAID NORTHERLY RIGHT-OF-WAY LINE, A DISTANCE OF 348.58 FEET TO THE **POINT OF BEGINNING** OF THIS DESCRIPTION AND CONTAINING IN ALL 3.78 ACRES MORE OR LESS.

SITE LIGHTING SCHEDULE						
Symbol	Label	Quantity	Catalog Number	Description	Lamp	Lumens
P	P	1	RSK1-LED-P3-50K-R3-MVOLT-5PA	Single Head Lithonia RSK1 Series LED Area Unit w/Type R3 Distribution (22K Pole Height w/3R Base) FULL CUTOFF DESIGN	LED5000K (FULL CUTOFF DESIGN-NO UPLIGHT)	14022
R	R	4	RSK1-LED-P3-50K-R3-MVOLT-5PA	Double Head Lithonia RSK1 Series LED Area Unit w/Type R3 Distribution (22K Pole Height w/3R Base) FULL CUTOFF DESIGN	LED5000K (FULL CUTOFF DESIGN-NO UPLIGHT)	14022
R9	R9	1	RSK1-LED-P3-50K-R3-MVOLT-5PA	Triple Head Lithonia RSK1 Series LED Area Unit w/Type R3 Distribution (22K Pole Height w/3R Base) FULL CUTOFF DESIGN	LED5000K (FULL CUTOFF DESIGN-NO UPLIGHT)	14022
S	S	1	RSK1-LED-P3-50K-R3-MVOLT-5PA	Triple Head Lithonia RSK1 Series LED Area Unit w/Type R3 Distribution (22K Pole Height w/3R Base) FULL CUTOFF DESIGN	LED5000K (FULL CUTOFF DESIGN-NO UPLIGHT)	14022
K	K	12	DSKW1-LED-100-1000-50K-T3M-MVOLT-20RND	Lithonia DSKW1 Series Wall Mount LED Unit w/Type T3M Distribution (180 and 140 Fixture Mounting Heights) FULL CUTOFF DESIGN	LED5000K (FULL CUTOFF DESIGN-NO UPLIGHT)	3898
K1	K1	3	H-15118-07HL-AHD-279721LED240D-R2M4M	H-15118-07HL Series LED Gooseneck Unit (21.9K Mounting Height) Red Frame (FULL CUTOFF DESIGN)	LED5000K (FULL CUTOFF DESIGN-NO UPLIGHT)	1170

PREPARED BY:
SEE
13747 MONTFORT DR
SUITE 275
DALLAS, TX 75240
214-678-9968
TBPE FIRM 12394

PREPARED FOR:
TKC CCCLXII, LLC

PROJECT NOTES:

BENCHMARKS:
benchmark information

REVISIONS / ISSUANCES

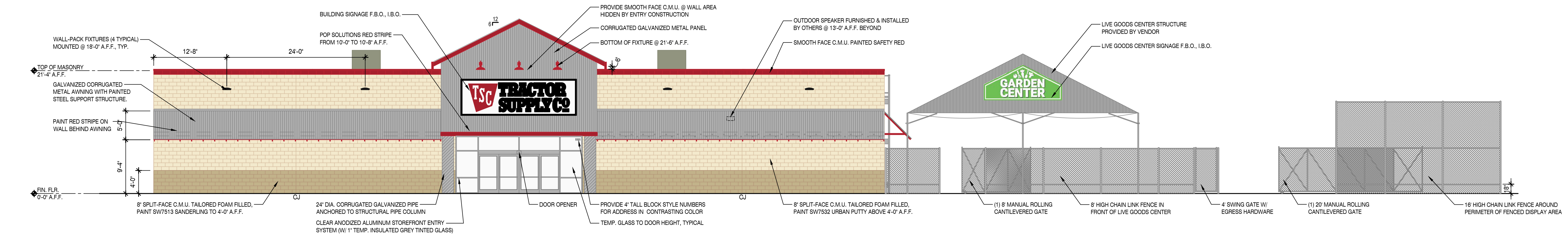
No.	DATE	BY	DESCRIPTION
#	#	#	#
#	#	#	#
#	#	#	#

TRACTOR SUPPLY COMPANY

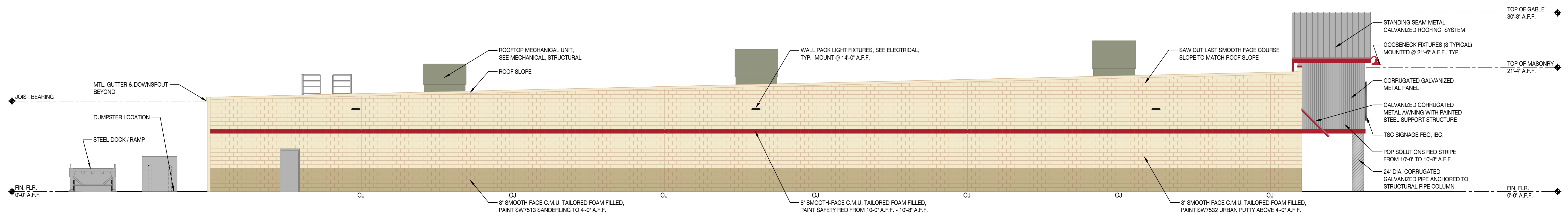
EL PASO (EAST), TX

DETAILED SITE PLAN

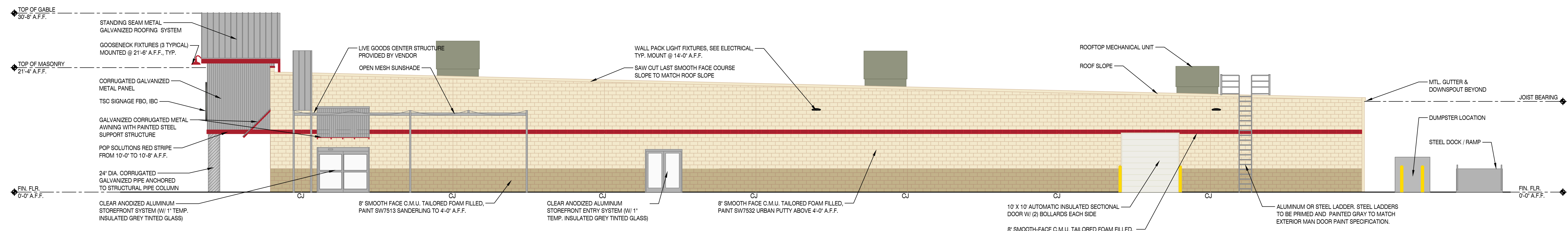
PROJECT NUMBER: 03-216-003	
DATE: 11/24/2025	SCALE: 1"=40'
DRAFTED BY: GMH	SHEET No. OF SHEETS
DESIGNED BY: GMH	
CHECKED BY: MAG	



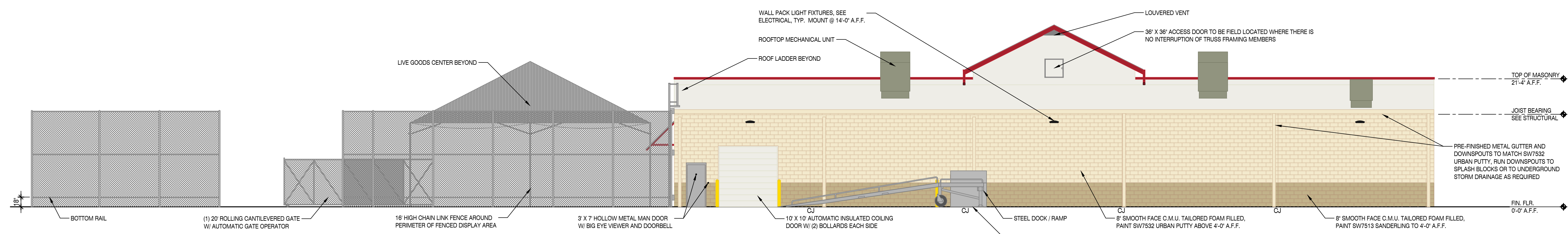
1 ELEVATION
SCALE: 1/8"=1'-0"



2 ELEVATION
SCALE: 1/8"=1'-0"



3 ELEVATION
SCALE: 1/8"=1'-0"



4 ELEVATION
SCALE: 1/8"=1'-0"

TRACTOR SUPPLY COMPANY
EL PASO EAST, TEXAS



OXFORD
ARCHITECTURE

2934 Sidco Drive
Suite 120
Nashville, TN 37204

Architecture
Planning
Interior Architecture