



ITEM 31

Gateway East Blvd. and Southeast of
Americas Ave.

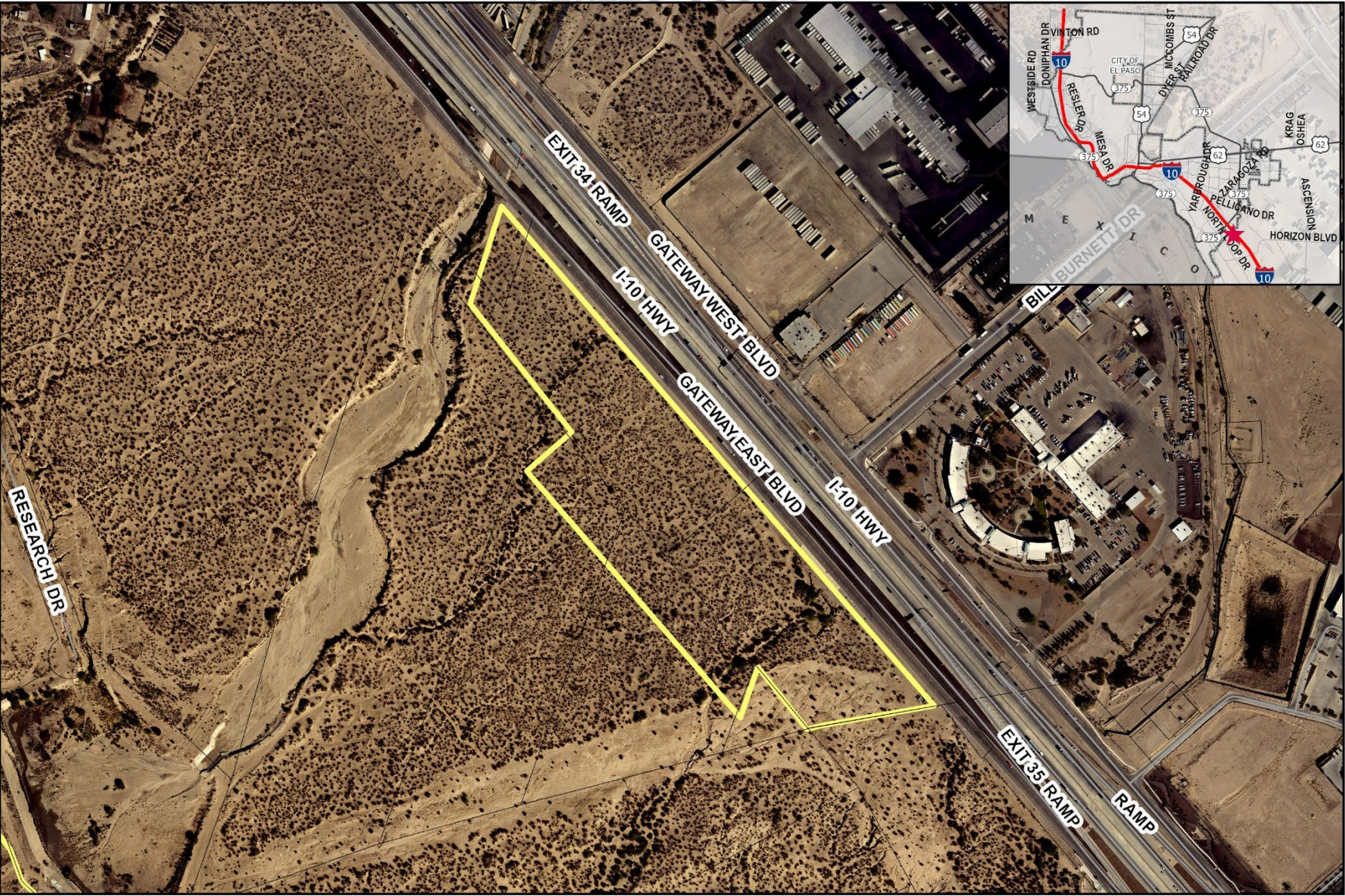
Rezoning

PZRZ23-00041

Strategic Goal 3.

Promote the Visual Image of
El Paso





Aerial

This map is designed for illustrative purposes only. The features depicted here are approximate and more site-specific studies may be required to draw accurate conclusions. Enlargements of this map to scales greater than its original can induce errors and may lead to misinterpretations of the data. The Planning & Inspections Department Planning Division makes no claim to its accuracy or completeness.



 Subject Property

0 115 230 460 690 920 Feet





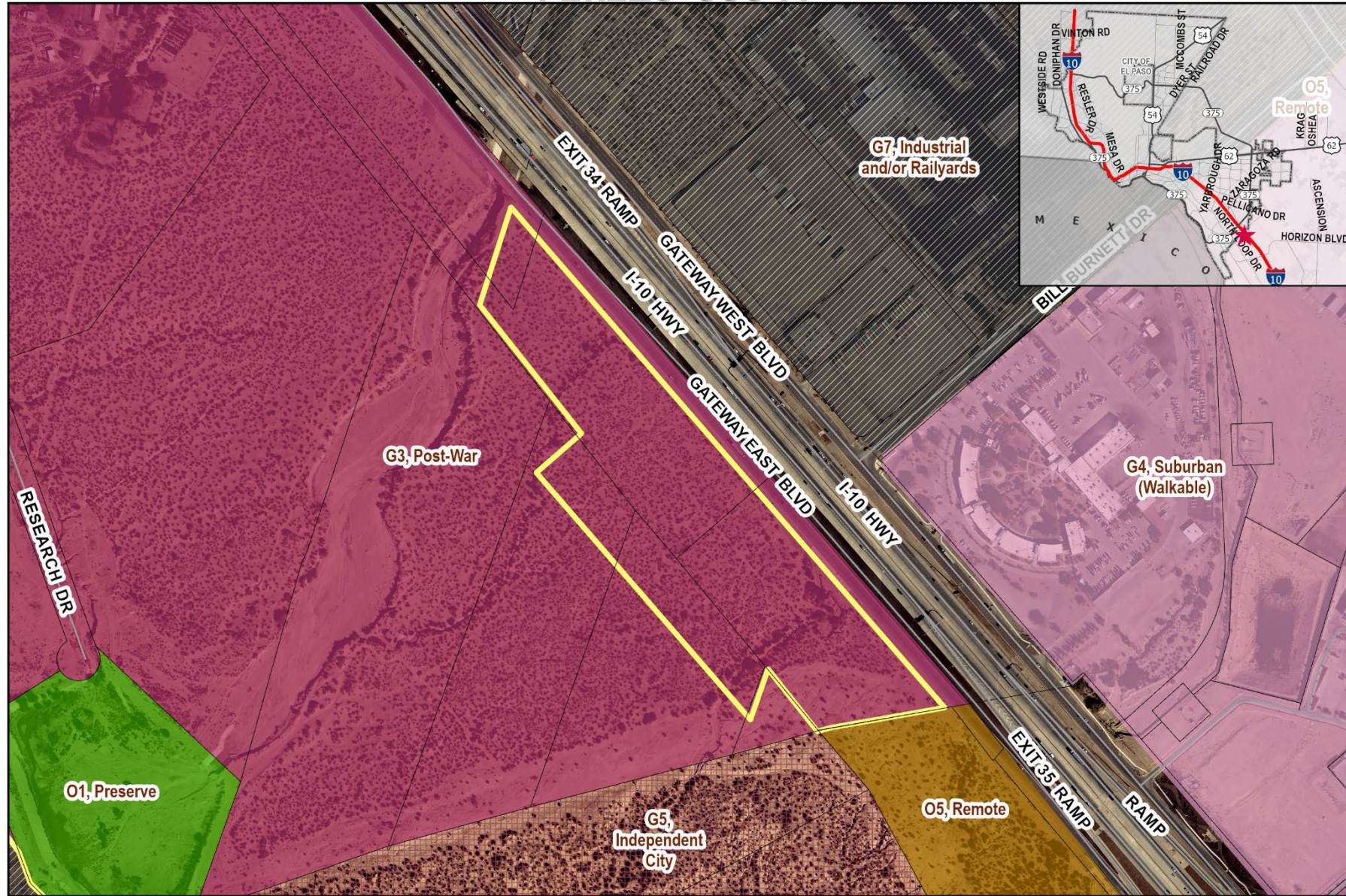
Existing Zoning

This map is designed for illustrative purposes only. The features depicted here are approximate and more site-specific studies may be required to draw accurate conclusions. Enlargements of this map to scales greater than its original can induce errors and may lead to misinterpretations of the data. The Planning & Inspections Department Planning Division makes no claim to its accuracy or completeness.



Subject Property





Future Land Use

This map is designed for illustrative purposes only. The features depicted here are approximate and more site-specific studies may be required to draw accurate conclusions. Enlargements of this map to scales greater than its original can induce errors and may lead to misinterpretations of the data. The Planning & Inspections Department Planning Division makes no claim to its accuracy or completeness.



Subject Property

0 115 230 460 690 920 Feet





Subject Property



Surrounding Development



W



N



S



E



Public Input

- Notices were mailed to property owners within 300 feet on March 22, 2024.
- The Planning Division has not received any communication in support or opposition to the request from the public.





Recommendation

- CPC and Staff recommend approval with the condition of the rezoning request. The condition is the following:
 - *That within twenty feet (20') from the front property line abutting Gateway East Boulevard, no parking or vehicular storage or display shall be allowed.*



Mission

Deliver exceptional services to support a high quality of life and place for our community



Vision

Develop a vibrant regional economy, safe and beautiful neighborhoods and exceptional recreational, cultural and educational opportunities powered by a high performing government



Values

Integrity, Respect, Excellence, Accountability, People