



USDOT FY25 RAISE Grant
Ysleta Port of Entry Southbound
Commercial Facilities Expansion
Project: Phase I

October 8, 2024



CITY OF EL PASO

STRATEGIC PLAN

GOAL 7: ENHANCE AND SUSTAIN EL PASO'S INFRASTRUCTURE NETWORK

AGENDA

1. RAISE Grant Program Overview
2. Project History
3. Scope of Work
4. Budget and Match
5. Council Action



FY25 RAISE Program

Annual Funding Opportunity

- BIL provides \$1.5 billion annually from FY22 - FY26
- FY26 funding is expected to be used for FY25 round

RAISE Award History

- City: \$0.9M in FY24 (Equitable Mobility Plan)
- City: \$12M in FY22 (Ysleta POE pedestrian improvements)
- City: \$0.9M in FY21 (Deck Plaza planning)
- TxDOT: \$12.6M for PDN Trail in FY22
- Sun Metro: \$10.3M for Northgate Transfer Center in FY13



Ysleta Port Development History

Recent and Ongoing Expansion Projects:

- Access improvements on TX-375 (2018)
- Intelligent Transportation Systems (ITS) (2019)
- Improvements on Pan American / Winn / Southside roads (2020)
- Dedicated truck route expansion (2021)
- Pedestrian improvements (ongoing)
- Additional access improvements on TX-375 (ongoing)
- Expansion of City facilities (**Bridges CIP 2024**)*
- Southbound Commercial Facilities Expansion Project (**proposed**)*

Potential Future Projects:

- Expansion of City ROW on S. Zaragoza Road
- Expansion of Sun Metro transit operations
- Expansion of federal and CBP facilities
- Expansion of state and TxDPS facilities

Projects with El Paso Water:

- Improvements on Playa Drain Canal (planned)
- Improvements Riverside Industrial Center (ongoing)

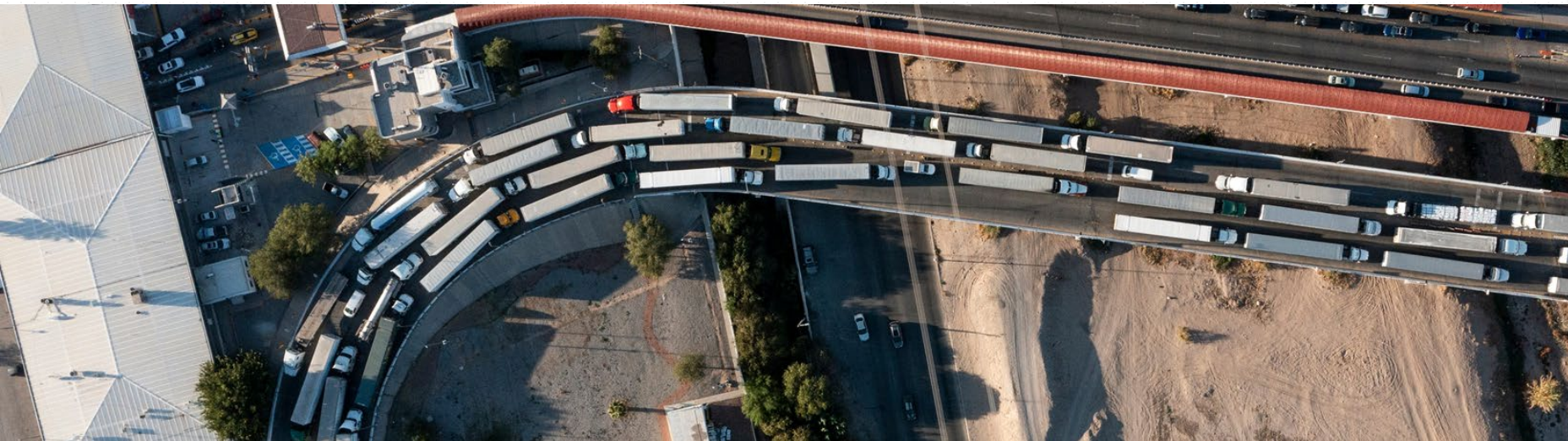


Previous Funding: Ysleta Port Of Entry Expansion Study

FY25 CPF Appropriations: \$3,000,000 (no match)
via Congresswoman Veronica Escobar

Project Scope of Work:

- Feasibility study focusing on Ysleta POE Expansion
- Project development and conceptual design
- Benefit-cost analysis, traffic analysis, GHG analysis
- Technical documents for Presidential Permit



Scope of Work

Design and construct improvements at ingress and egress roads related to Ysleta Port operations

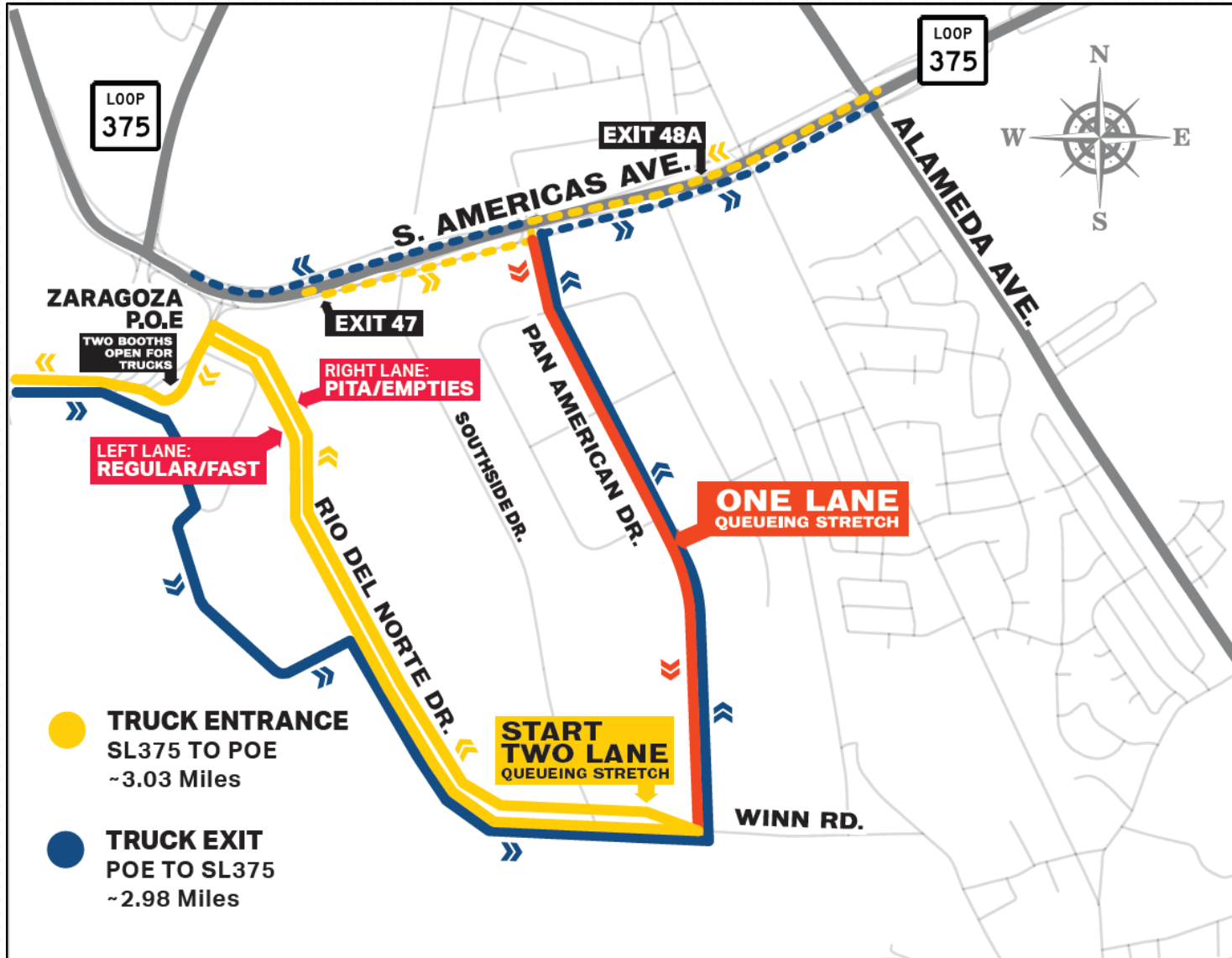
- Signage and crossing improvements
- Intelligent Transportation Systems
- Pan American Drive
- Winn Road
- Rio del Norte Drive
- Southside Road

Design and construct improvements for southbound commercial facilities

- Expanding tolling facilities
- Restriping and curb improvements
- Right of way acquisition



Scope of Work: Road Improvements



Scope of Work: Facilities Improvements



Budget and Match

Grant Request: \$20,000,000 (80%)

City of El Paso: \$5,000,000 (20%)

Total Project: \$25,000,000 (100%)

Funding Source: TED Fund



Grant Timeline

Application Phase

Project Advocacy

FY25 RAISE
Applications
Open

Application
deadline
(~Feb 28)

Estimated
Award Date

Oct 24

Nov 24

Dec 24

Jan 25

Feb 25

March –December 2025

Council
approval
(Oct 8)

Project
Selection
Announcement

El Paso MPO Coordination

- EP MPO TPB date: November 15, 2024
- If awarded, the El Paso MPO will work together with the City of El Paso to include the Project in the El Paso MPO Metropolitan Transportation Plan (MTP) in accordance with 23 U.S.C. §§ 134 and 135.
- A grant award will require updating the Statewide Transportation Improvement Program (STIP)



Council Action

City of El Paso City Council authorizes the submission of an application to the U.S. Department of Transportation (USDOT) Fiscal Year 2025 Rebuilding American Infrastructure with Sustainability and Equity (RAISE) grant program, with a \$5,000,000.00 match required from the City, for the Ysleta Port of Entry Southbound Commercial Facilities Expansion Project: Phase I.

MISSION



Deliver exceptional services to support a high quality of life and place for our community.

VISION



Develop a vibrant regional economy, safe and beautiful neighborhoods and exceptional recreational, cultural and educational opportunities powered by a high performing government.



VALUES

Integrity, **R**espect, **E**xcellence,
Accountability, **P**eople