

**CITY OF EL PASO, TEXAS
AGENDA ITEM
DEPARTMENT HEAD'S SUMMARY FORM**

AGENDA DATE: April 26, 2022

REVISED

CONTACT(S): Karina Brasgalla, BrasgallaKX@elpasotexas.gov, (915) 212-1570;
Philip Etiwe, EtiwePF@elpasotexas.gov, (915) 212-1553

DISTRICT(S) AFFECTED: ALL

STRATEGIC GOAL: 6 Set the Standard for Sound Governance and Fiscal Management

SUBGOAL: 6.8 Support transparent and inclusive government

SUBJECT:

A Resolution adopting a districting plan which establishes new Council representative district boundaries based on the 2020 U.S. Census data, to become effective immediately, and dissolving the Districting Commission, as they have completed their duties in the redistricting process per City Charter.

BACKGROUND / DISCUSSION:

The Districting Commission held its first meeting on Thursday, September 16, 2021. Regular meetings were moved to Wednesdays in order to avoid conflict with the El Paso County Redistricting Commission. A total of 15 meetings were held using a hybrid format, allowing in-person participation from City Council chambers in addition to virtual attendance via Microsoft Teams or by phone. At these meetings, the Commission received informational presentations, reviewed and debated on proposed districting plans, took public comment, and live-edited plan options. As part of the redistricting process, the Commission worked with City Staff to schedule and host a total of ten community meetings in multiple locations throughout the City, with two meetings conducted completely virtually. Staff was invited to and attended three city representative community meetings to speak on this subject. Staff also presented to various local associations and organizations by request. These community meetings provided a venue for residents to have direct access and communication with Commissioners, facilitated the public comment process, and allowed City Staff to gain insight from a variety of audiences city-wide.

A dedicated website was created and a direct link placed on the main City of El Paso website at www.elpasotexas.gov/shapeep. This website was used to notify the general public throughout the redistricting process. The website featured a variety of resources and on-line tools including the entire schedule for all public and community meetings, electronic files of the agendas and minutes for all meetings, video recordings of all meetings, a GIS viewer that allowed users of the site to navigate and view in detail each proposed redistricting plan, as well as a portal for submitting comments to the Commission.

A total of 18 districting plans were submitted and reviewed, with several plan options edited live at meetings on March 16th and 23rd. On March 23, 2022, the Districting Commission used ranked choice voting to establish their top three proposed districting plans to submit to Council for consideration: 1) CD7 Revised, 2) CD6 Revised, and 3) CD8 Revised.

District Plans were reviewed and edited by Council on April 11, 14, and 25 of 2022. Map 7B as revised April 25, 2022 is the final map under consideration by City Council.

PRIOR COUNCIL ACTION:

On April 27, 2021, City Council reestablished the Districting Commission in accordance with the requirements of Article II, Section 2.4(B) of City Charter. On October 26, 2021, Council approved a Resolution establishing the redistricting criteria for new proposed district boundaries. As part of the previous redistricting effort following the 2010 Census, City Council adopted new representative district boundaries effective July 23, 2012.

AMOUNT AND SOURCE OF FUNDING:

Revised 04/09/2021

N/A

HAVE ALL AFFECTED DEPARTMENTS BEEN NOTIFIED? ___ YES ___ NO

PRIMARY DEPARTMENT: Planning and Inspections

SECONDARY DEPARTMENT: City Attorney's Office

*****REQUIRED AUTHORIZATION*****

DEPARTMENT HEAD:

Philip Tiive

(If Department Head Summary Form is initiated by Purchasing, client department should sign also)

RESOLUTION

WHEREAS, after the completion of the 2020 U.S. Census, realignment of representative district boundaries of the City of El Paso is required when the difference in population between the largest and smallest district exceeds ten percent; and

WHEREAS, upon review of the 2020 census data for the City of El Paso there exists an apparent population imbalance requiring adjustment of the representative district boundaries; and

WHEREAS, on April 27, 2021, pursuant to Article II, Section 2.4(B) of the City Charter, the City Council established the Districting Commission (the “Commission”); and

WHEREAS, on October 26, 2021, the City Council adopted redistricting criteria to guide the Council and the Commission in the consideration of districting plans; and

WHEREAS, during the course of the redistricting process the Commission conducted numerous regular Commission meetings and community meetings to develop alternative districting plans and to solicit comment and participation from members of the general public and other interested groups; and

WHEREAS, the Commission has now made its recommendations to the Council concerning adjustments of the boundaries of the representative districts to insure substantial equality of the populations; and

WHEREAS, the City Council has considered various proposed alternative districting plans regarding the adjustment of representative district boundaries of the City and now finds that the attached districting plan is in the best interest of the citizens of the City, complies with the adopted redistricting criteria, and is believed to comply with all constitutional principles and laws governing voting rights of the United States and Texas.

NOW, THEREFORE, BE IT RESOLVED BY THE CITY COUNCIL OF THE CITY OF EL PASO:

1. That the City Council hereby adopts as the City’s districting plan the attached map, to become effective immediately;
2. That the Districting Commission, having completed their duties as identified in the City Charter, is hereby dissolved.

ADOPTED this ____ day of _____, 2022.

THE CITY OF EL PASO

Oscar Leeser, Mayor

[Signatures Continue on Following Page]

ATTEST:

Laura Prine
City Clerk

APPROVED AS TO FORM:

Russell Abeln

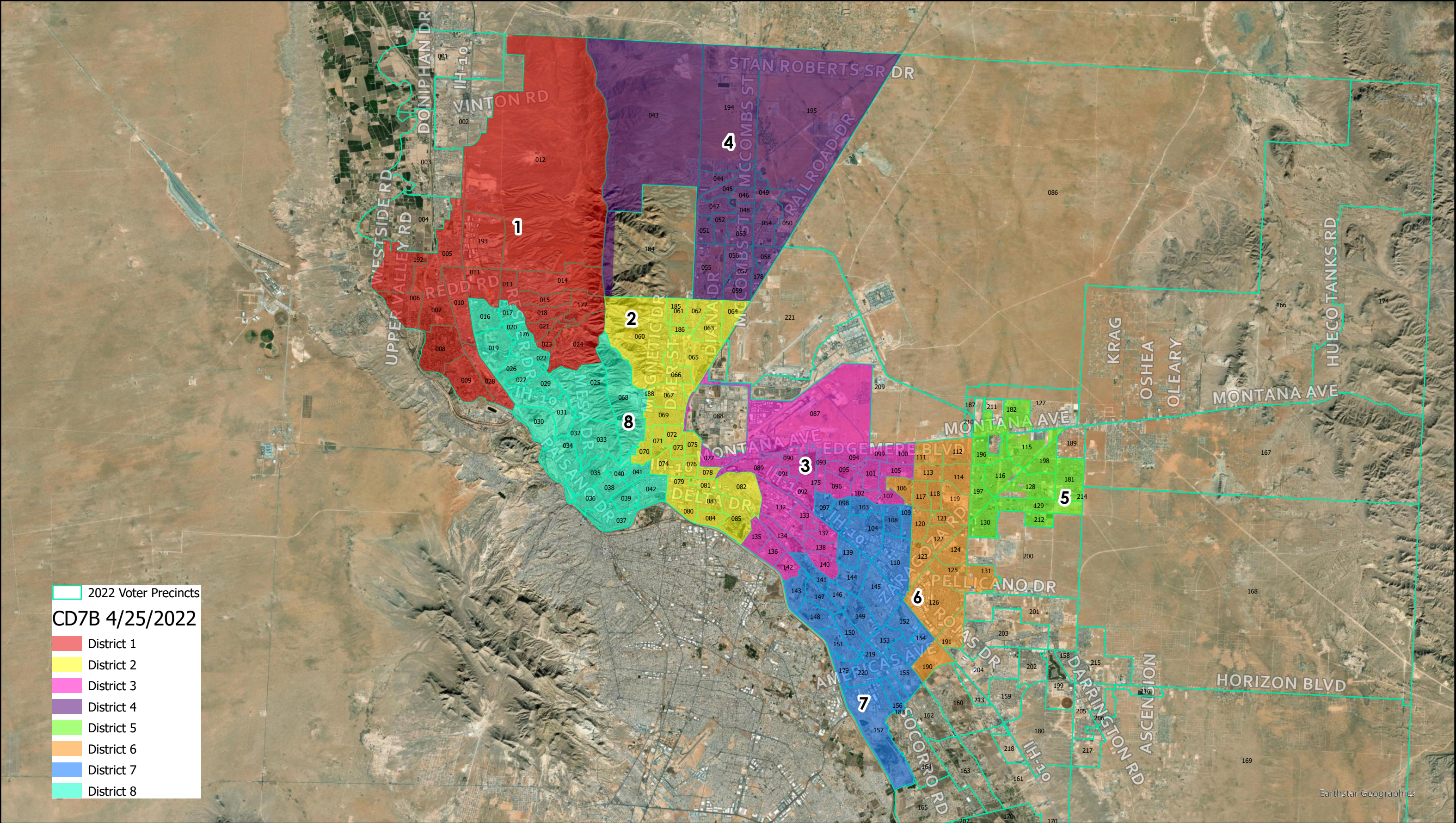
Russell T. Abeln
Assistant City Attorney

APPROVED AS TO CONTENT:

Philip Etiwe

Philip Etiwe, Director
Planning and Inspections Department

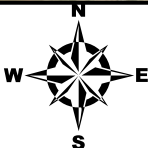
Draft #7B Revised 4/25/2022



2022 Voter Precincts
CD7B 4/25/2022

- District 1
- District 2
- District 3
- District 4
- District 5
- District 6
- District 7
- District 8

This map is designed for illustrative purposes only. The features depicted here are approximate and more site-specific studies may be required to draw accurate conclusions. Enlargements of this map to scales greater than its original can induce errors and may lead to misinterpretations of the data. The Planning & Inspections Department Planning Division makes no claim to its accuracy or completeness.



Earthstar Geographics

RESOLUTION

WHEREAS, under Public Law 94-171, after the completion of the 2020 U.S. Census, realignment of representative district boundaries of the City of El Paso is required when the difference in population between the largest and smallest district exceeds ten percent; and

WHEREAS, upon review of the 2020 census data for the City of El Paso it appears that a population imbalance exists requiring adjustment of the representative district boundaries; and

WHEREAS, it is the intent of the City to comply with the Voting Rights Act and with all other relevant law, including *Shaw v. Reno* jurisprudence; and

WHEREAS, pursuant to Article II, Section 2.4(B) of the City Charter the City Council has established the Districting Commission (the "Commission"), which will make recommendations to the Council concerning adjustments of the boundaries of representative districts as necessary to insure substantial equality of the populations of the districts; and

WHEREAS, a set of established redistricting criteria will serve as a framework to guide the Council and its Commission in consideration of districting plans; and

WHEREAS, redistricting criteria will also assist the City and its Commission in efforts to comply with all applicable federal and state laws.

NOW THEREFORE, BE IT RESOLVED BY THE CITY COUNCIL FOR THE CITY OF EL PASO:

That the City, as part of its instruction to the Commission and in its adoption of a redistricting plan, will observe the following redistricting criteria in the adjustment of representative district boundaries:

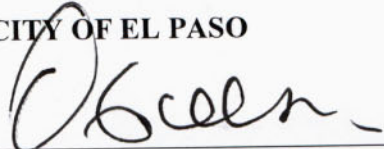
1. Where possible, easily identifiable geographic boundaries should be followed.
2. Communities of interest should be maintained in a single district, where possible, and attempts should be made to avoid splitting neighborhoods.
3. To the extent possible, districts should be composed of whole voting precincts.
4. Although it is recognized that existing districts will have to be altered to reflect new population distribution, any districting plan should, to the extent possible, be based on existing districts.
5. Districts must be configured so that they are relatively equal to total population

according to the 2020 Federal Census. In no event should the total deviation between the largest and the smallest district exceed ten percent. The City will attempt to achieve a deviation that is less than ten percent under the data released by the Census Bureau.



6. The districts should be compact and composed of contiguous territory. Compactness may contain a functional, as well as geographical dimension.
7. Consideration may be given to the preservation of incumbent- constituency relations by recognition of the residence of incumbents and their history in representing certain areas.
8. The plan should not fragment a geographically compact minority community or pack minority voters so as to comply with Section 2 of the Voting Rights Act, 42. U.S.C. Section 1973, and not prejudice minority voters.

PASSED AND APPROVED this 26th day of October 2021


THE CITY OF EL PASO


Oscar Leeser, Mayor

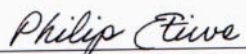
ATTEST:



Laura D. Prine, City Clerk

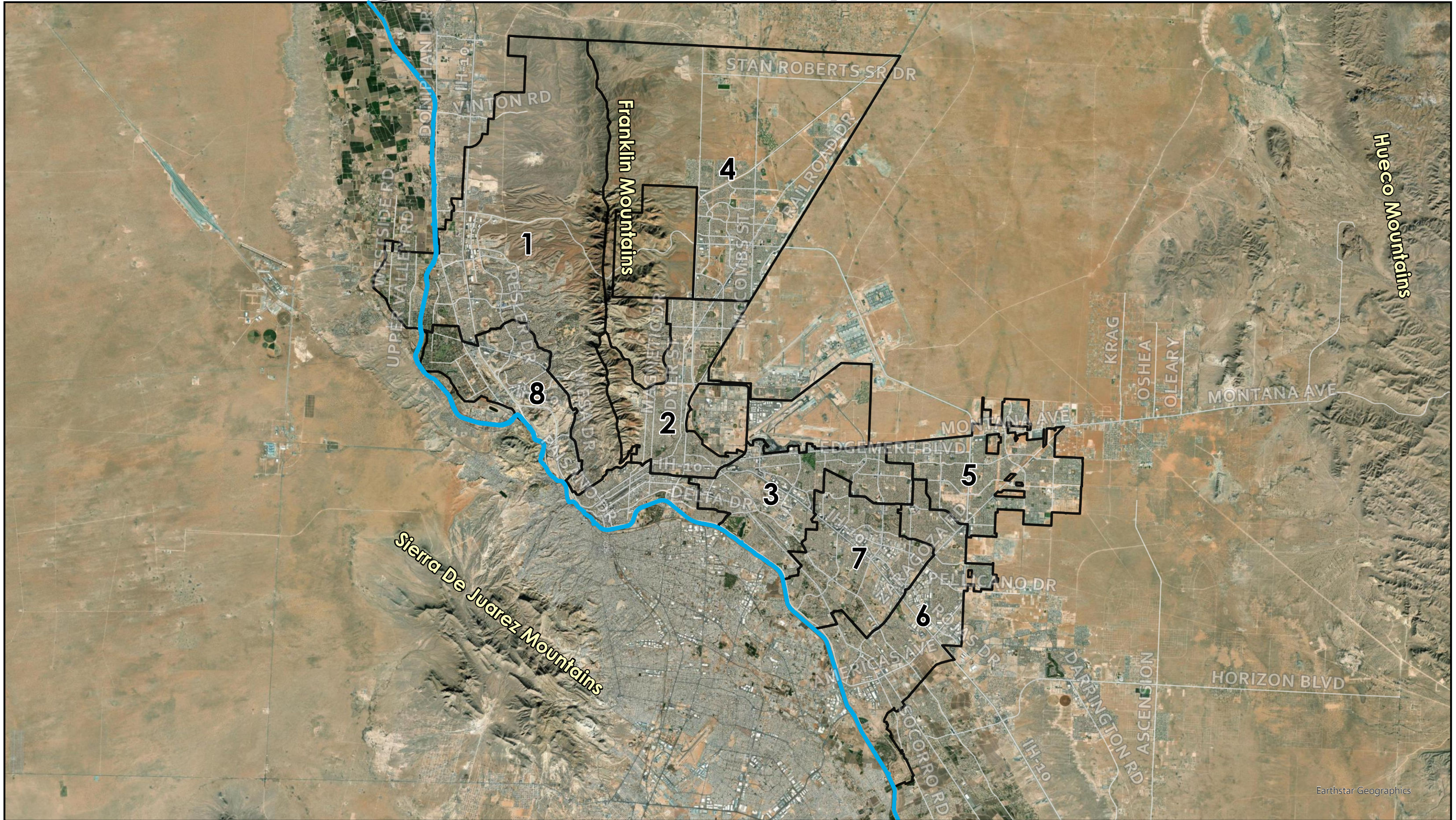
APPROVED AS TO FORM:


Russell T. Abeln
Assistant City Attorney

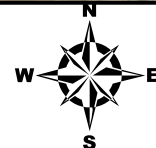
APPROVED AS TO CONTENT:




Philip F. Etiwe, Director
Planning & Inspections Department

Geographic Features - City of El Paso, Texas



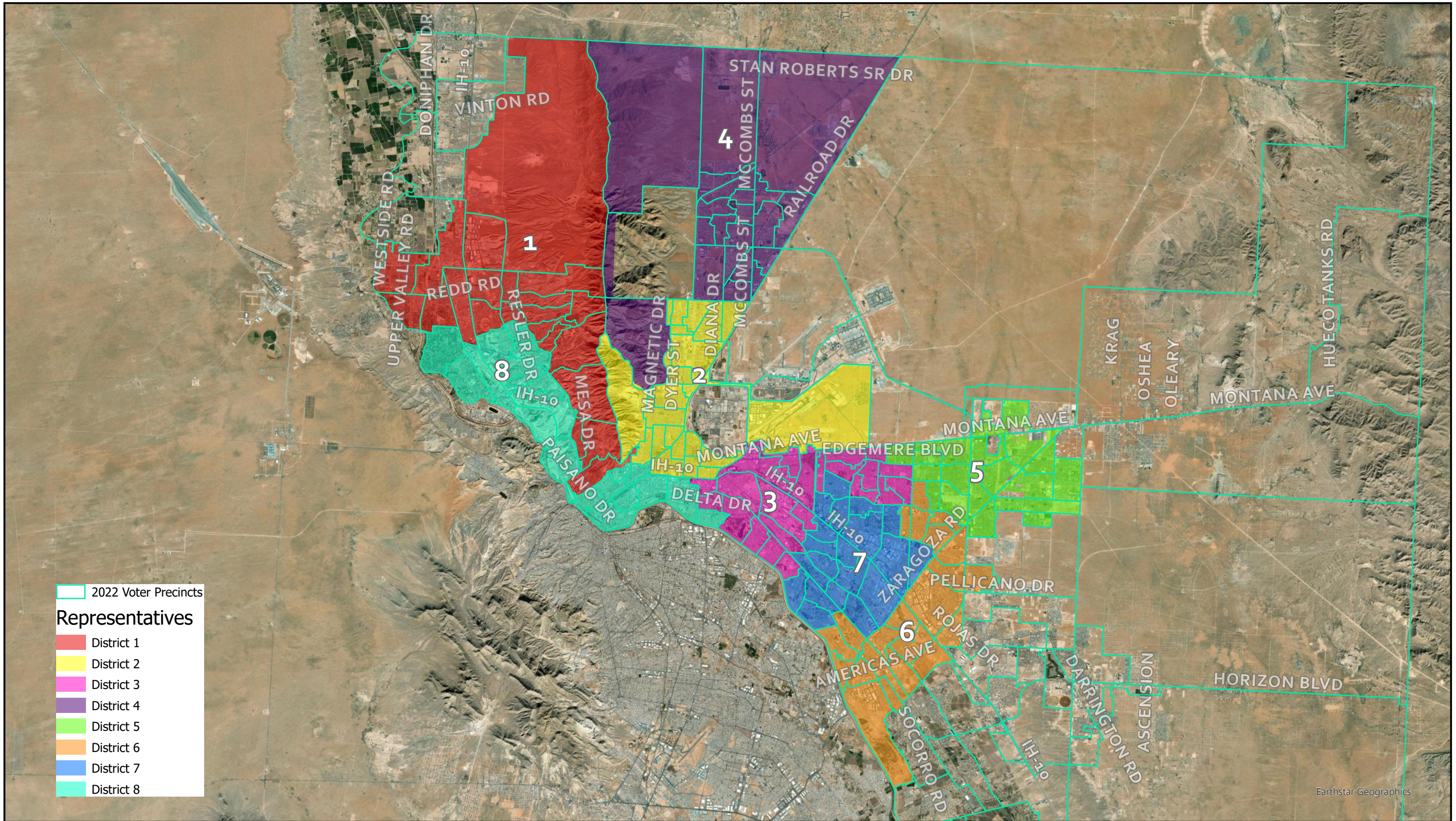
This map is designed for illustrative purposes only. The features depicted here are approximate and more site-specific studies may be required to draw accurate conclusions. Enlargements of this map to scales greater than its original can induce errors and may lead to misinterpretations of the data. The Planning & Inspections Department Planning Division makes no claim to its accuracy or completeness.



-  Current Districts
-  Rio Grande River



Current Districts

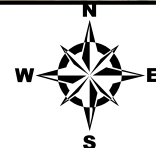


2022 Voter Precincts

Representatives

- District 1
- District 2
- District 3
- District 4
- District 5
- District 6
- District 7
- District 8

This map is designed for illustrative purposes only. The features depicted here are approximate and more site-specific studies may be required to draw accurate conclusions. Enlargements of this map to scales greater than its original can induce errors and may lead to misinterpretations of the data. The Planning & Inspections Department Planning Division makes no claim to its accuracy or completeness.



Earthstar Geographics



SPLIT VOTING PRECINCTS

No precincts split by this Plan.

POPULATION DEVIATION

District	Population	Ideal Pop.	Difference	Deviation
1	85,201	84,851.875	(4,297)	(5.06%)
2	82,567	84,851	341	0.40%
3	88,469	84,851	2,144	2.53%
4	88,107	84,851	3,255	3.84%
5	80,174	84,851	(4,678)	(5.51%)
6	83,592	84,851	3,688	4.35%
7	85,841	84,851	3,403	4.01%
8	86,864	84,851	(3,857)	(4.55%)
Total	678,815		 4.35% + (5.51%) =	9.86%

COMPACT AND CONTIGUOUS

- Compactness Score of 47
- All districts are contiguous

INCUMBENT SEATS

- Representative Svarzbein removed from D1; term ends January 3, 2023; not eligible for reelection

RACE AND ETHNICITY

District	White	Black	Native American/ Alaska Native	Hawaiian/ Pacific Islander	Asian	Other	Multirace
1	21.51%	1.85%	0.18%	0.05%	2.48%	0.29%	1.57%
2	9.93%	2.71%	0.21%	0.31%	0.72%	0.31%	1.28%
3	9.28%	2.29%	0.20%	0.14%	0.64%	0.28%	0.75%
4	17.88%	7.27%	0.34%	0.38%	2.03%	0.40%	2.64%
5	10.53%	4.76%	0.27%	0.33%	1.40%	0.35%	1.69%
6	7.57%	2.38%	0.17%	0.11%	1.04%	0.26%	0.77%
7	6.26%	1.19%	0.38%	0.03%	0.44%	0.16%	0.58%
8	14.59%	2.33%	0.18%	0.07%	1.96%	0.29%	1.23%

District	Hispanic	Non-Hispanic
1	66.62%	27.93%
2	87.73%	15.45%
3	84.75%	13.59%
4	69.06%	30.94%
5	80.69%	19.31%
6	93.62%	12.30%
7	93.78%	9.03%
8	72.58%	20.66%