



ITEMS 32 & 33

1814 and 1818 Arizona Avenue Rezoning and Special Permit

PZRZ24-00001

PZST24-00010

Strategic Goal 3.

Promote the Visual Image of
El Paso



PZRZ24-00001 & PZST24-00010



Aerial



This map is designed for illustrative purposes only. The features depicted here are approximate and more site-specific studies may be required to draw accurate conclusions. Enlargements of this map to scales greater than its original can induce errors and may lead to misinterpretations of the data. The Planning & Inspections Department Planning Division makes no claim to its accuracy or completeness.



 Subject Property

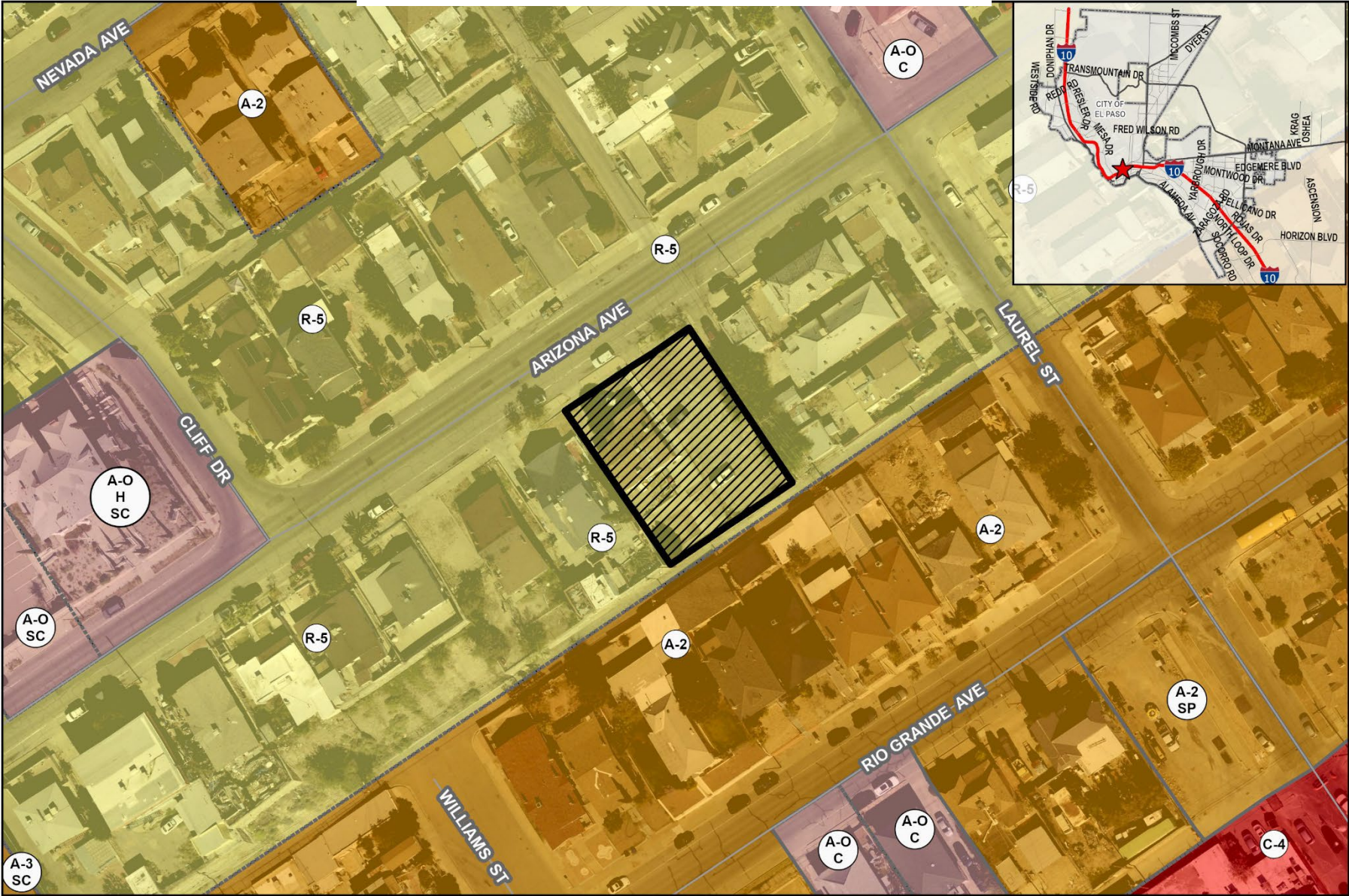
0 20 40 80 120 160 Feet



PZRZ24-00001 & PZST24-00010



Existing Zoning



This map is designed for illustrative purposes only. The features depicted here are approximate and more site-specific studies may be required to draw accurate conclusions. Enlargements of this map to scales greater than its original can induce errors and may lead to misinterpretations of the data. The Planning & Inspections Department Planning Division makes no claim to its accuracy or completeness.



Subject Property



PZRZ24-00001 & PZST24-00010

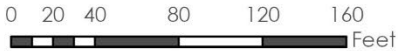


Future
Land
Use

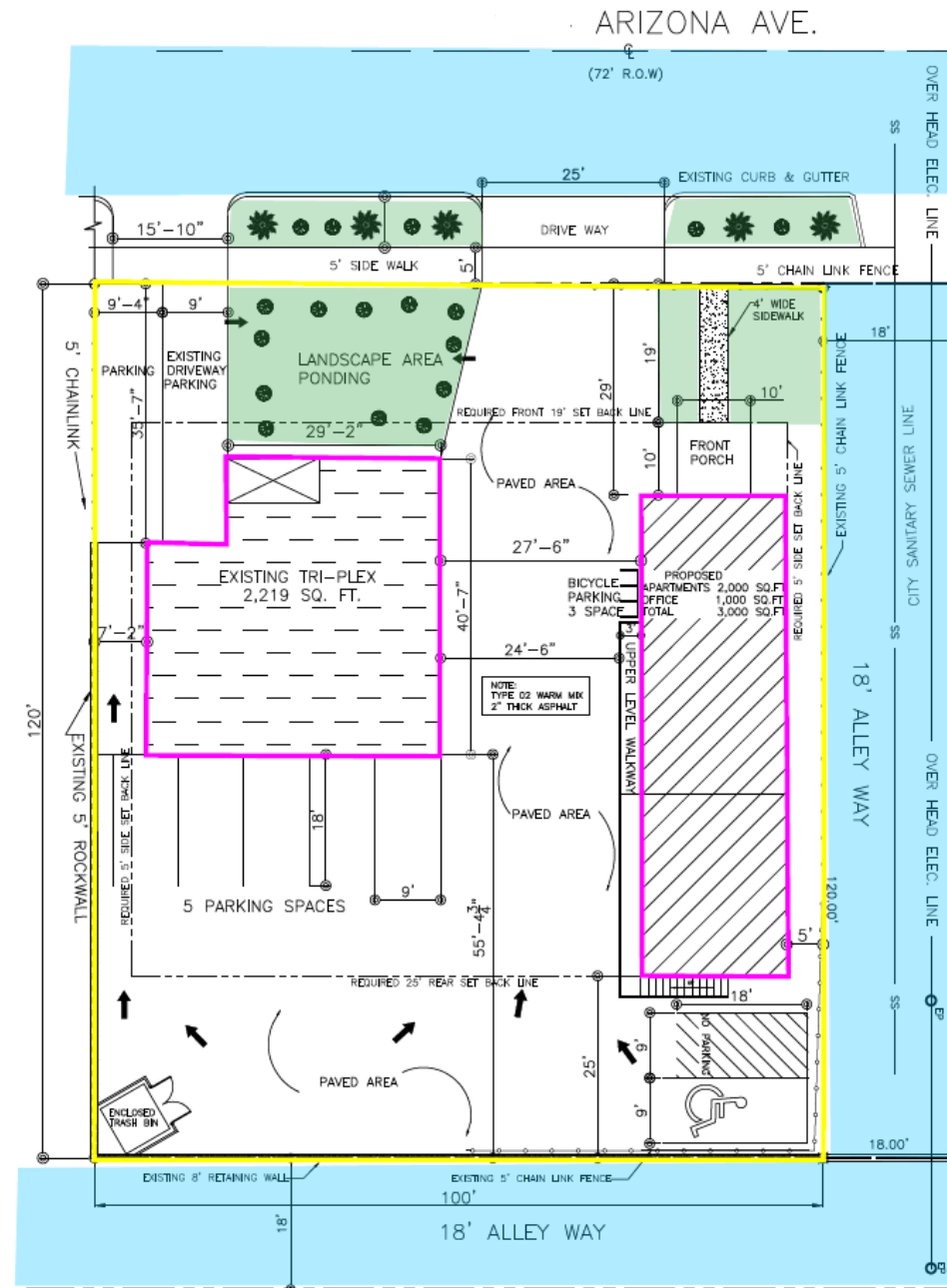
This map is designed for illustrative purposes only. The features depicted here are approximate and more site-specific studies may be required to draw accurate conclusions. Enlargements of this map to scales greater than its original can induce errors and may lead to misinterpretations of the data. The Planning & Inspections Department Planning Division makes no claim to its accuracy or completeness.



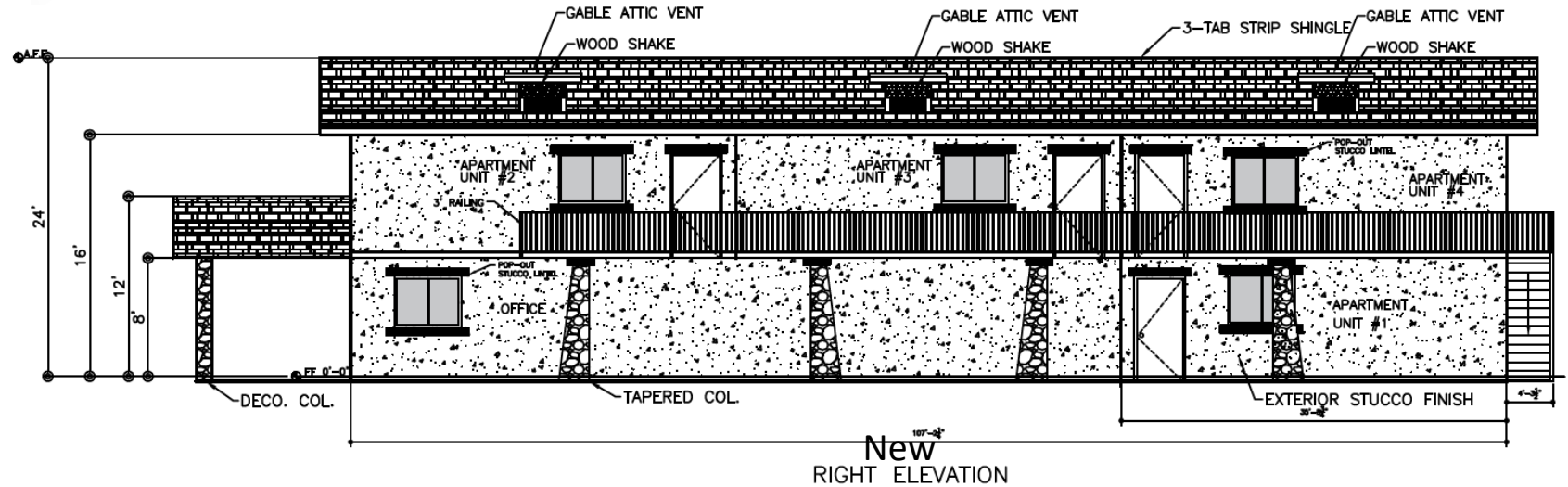
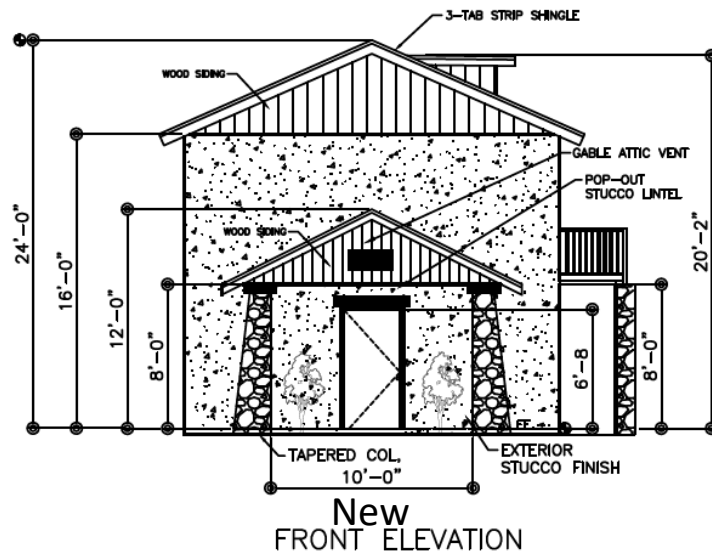
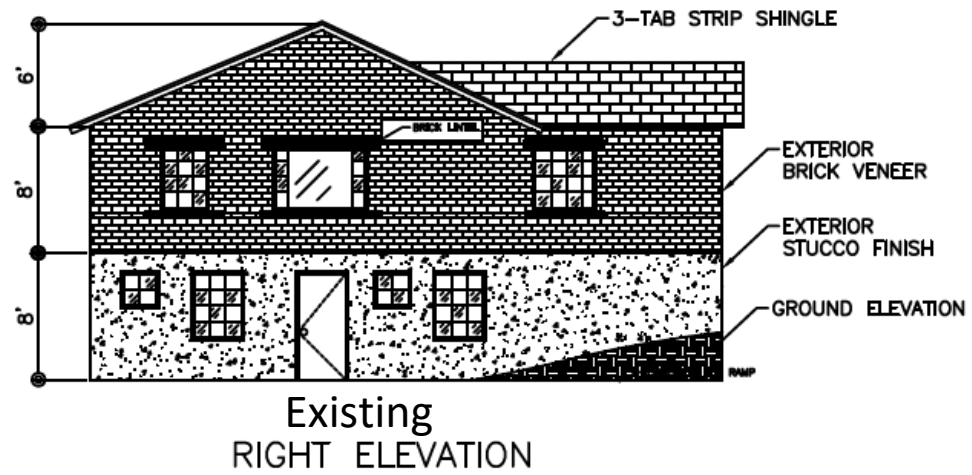
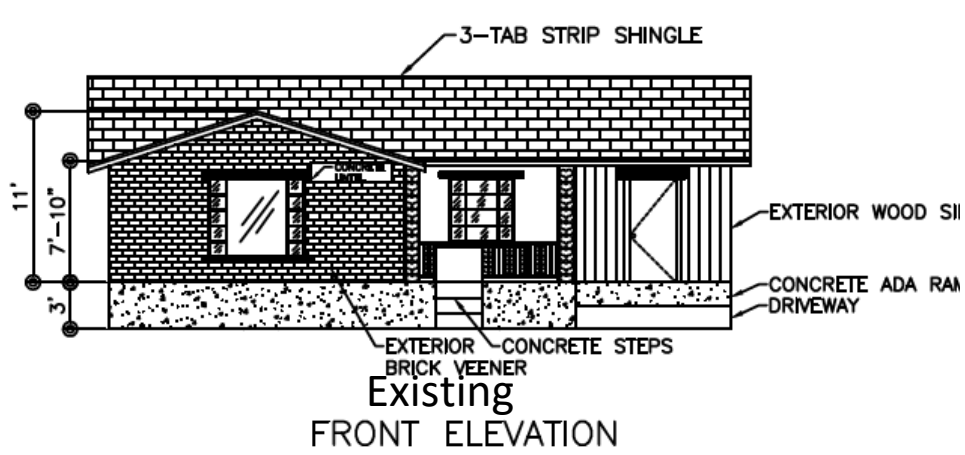
 Subject Property



Detailed Site Plan



Elevations



PZST24-00010



Aerial with Site Plan

This map is designed for illustrative purposes only. The features depicted here are approximate and more site-specific studies may be required to draw accurate conclusions. Enlargements of this map to scales greater than its original can induce errors and may lead to misinterpretations of the data. The Planning & Inspections Department Planning Division makes no claim to its accuracy or completeness.



0 5 10 20 30 40 Feet



Subject Property





Subject Property

Surrounding Development



N



W

S

E
10

Public Input

- Notices were mailed to property owners within 300 feet on January 30, 2025
- As of February 13, 2025, the Planning Division has not received any communication in support or opposition to the request from the public.





Recommendation

- Staff and CPC recommended approval of the rezoning request.
- Staff and CPC also recommended approval of special permit and detailed site development plan.



Mission

Deliver exceptional services to support a high quality of life and place for our community



Vision

Develop a vibrant regional economy, safe and beautiful neighborhoods and exceptional recreational, cultural and educational opportunities powered by a high performing government



Values

Integrity, Respect, Excellence, Accountability, People



Subject Property - Alley