



# Ordinance Amending Various Title 12.88 Subsections

Vehicles & Traffic, Schedules

Accommodate New Release Times for Montwood High School

City Council

Introduction: March 1, 2022

Public Hearing: March 15, 2022

District: 6





Image: Provided by resident

## Presentation Overview

- Strategic Plan Goal(s)
- Purpose of Amendment
- Existing Conditions + Impact
- SISD High Schools + Release Times
- Requested Council Action / Proposed Conditions
- Backup Information
  - Subsection Review
    - 12.88.041
    - 12.88.030
    - 12.88.200

2

Amendment to Title 12, Ch. 12.88, § 12.88.041; § 12.88.030; § 12.88.200

## Strategic Plan Goal(s)

- 7 – Enhance and Sustain El Paso’s Infrastructure Network
  - 7.3 – Enhance a regional comprehensive transportation system

# Purpose of Amendment



Residents on Frank Cordova Circle, Mike Andrade Place & Luis Gomez Place informed Streets and Maintenance that Montwood High School changed the release time to **4:15pm**.

## **Existing Parking Restrictions:**

1. 12.88.041: No Parking 7:00 AM – 4:00 PM, School Days Only
2. 12.88.030: No Parking Anytime
3. 12.88.200: RPD Zone K: No Parking 7:00 AM – 4:00 PM, School Days Only



Amendment to Title 12, Ch. 12.88, § 12.88.041; § 12.88.030; § 12.88.200

# Existing Conditions + Impact

Frank Cordova & Mike Andrade

- Pick-up and drop-off
- Blocked driveways
- Parked in street until after students released

❖ Prevents flow of traffic



Images + video: Provided by resident





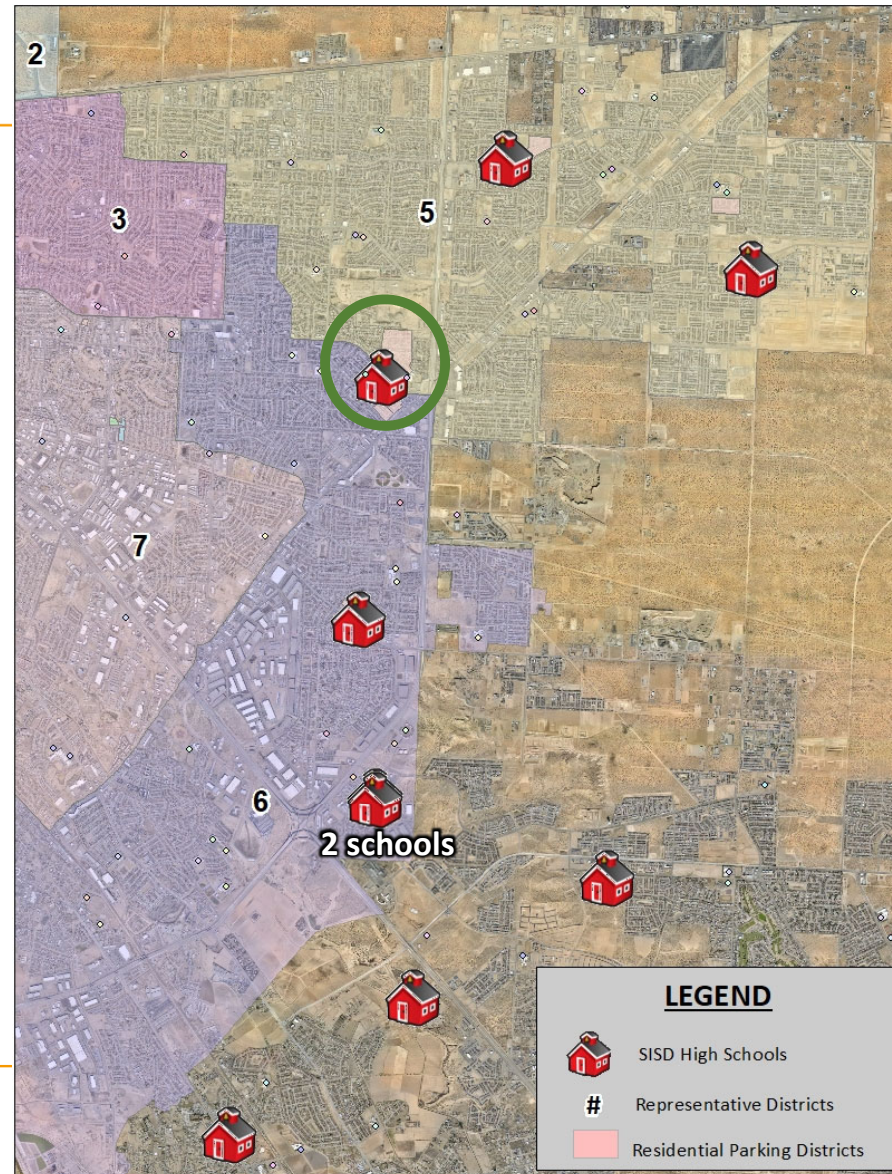


# SISD High Schools + Release Times

District	School	Release Time
5	El Dorado	4:02p
	Pebble Hills	4:15p
6	<b>Montwood</b>	<b>4:15p</b>
	Americas	4:15p
	KEYS Academy	4p
	Options	4p
Outside City Limits	Eastlake	4:15
	Mission Early College	4:15p
	Socorro	4:15p

All release times are **at/after 4p**

Amendment to Title 12, Ch. 12.88, § 12.88.041; § 12.88.030; § 12.88.200



# What are we doing?



- Tracking cost for signage change
- Drafting letter to superintendents
  - Signed by CM + distributed to all districts
  - Establish better infrastructure-related working relationship
- Other ISDs
  - Investigate release time changes + parking restrictions around schools
  - If needed:
    - Track cost for signage change
    - Bring ordinance amendment to City Council for approval



El Paso Independent  
School District



Socorro  
Independent School  
District



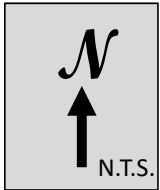
Ysleta Independent  
School District



Amendment to Title 12, Ch. 12.88, § 12.88.041; § 12.88.030; § 12.88.200



# Requested Council Action / Proposed Conditions



*Staff recommends approval.*

## 12.88.041 (Schedule IVA—Parking prohibited during certain hours—School days only):

To amend paragraph A to delete certain streets and to add paragraph

- B. No parking, 7:00 a.m. to 5:00 p.m. on any street or parts of streets from Monday through Friday on any regularly scheduled School Day.

## 12.88.030 (Schedule III—Parking prohibited at all times on certain streets.):

To amend the prohibited parking area

- 355. Firehouse Drive from Montwood Drive to Saul Kleinfeld Drive, both sides;

## 12.88.200 (Schedule XVII—Restrictions on parking in residential districts.):

To amend Zone K to delete certain streets and amend Zone N to amend prohibited parking times and add certain streets

**Zone N:** No parking 7:00 a.m. to 5:00 p.m., school days only:





# Requested Council Action

---



An ordinance amending Title 12 (Vehicles and Traffic), Chapter 12.88 (Schedules), Section 12.88.041 (Schedule IVA – Parking prohibited during certain hours – school days only) of the City Code to amend paragraph A to delete certain streets and to add paragraph B to prohibit parking between the hours of 7:00 A.M. to 5:00 P.M. school days only on certain streets; amending section 12.88.030 (Schedules III – Parking prohibited at all times on certain streets), paragraph 355, to amend the prohibited parking area; amending section 12.88.200 (Schedules XVII – Restrictions on parking in residential districts) to amend Zone K to delete certain streets; amending 12.88.200 (Schedules XVII – Restrictions on parking in residential districts) to amend Zone N to amend prohibited parking times and add certain streets; the penalty being provided in Chapter 12.84 of the El Paso City Code.

***Staff recommends approval.***

---

Amendment to Title 12, Ch. 12.88, § 12.88.041; § 12.88.030; § 12.88.200





## Mission

Deliver exceptional services to support a high quality of life and place for our community



## Values

Integrity, **R**espect, **E**xcellence,  
**A**ccountability, **P**eople



## Vision

Develop a vibrant regional economy, safe and beautiful neighborhoods and exceptional recreational, cultural and educational opportunities powered by a high performing government

## Misión

Brindar servicios excepcionales para respaldar una vida y un lugar de alta calidad para nuestra comunidad

## Valores

Integridad, **R**espeto, **E**xcelencia,  
**R**esponsabilidad, **P**ersonas



## Visión

Desarrollar una economía regional vibrante, vecindarios seguros y hermosos y oportunidades recreativas, culturales y educativas excepcionales impulsadas por un gobierno de alto desempeño

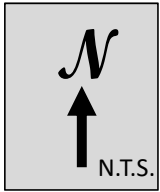




# Backup Info



# Existing Conditions



**12.88.041 (Schedule IVA—Parking prohibited during certain hours—School days only):**

- A. No parking, 7:00 a.m. to 4:00 p.m. on any street or parts of streets from Monday through Friday on any regularly scheduled School Day.

**12.88.030 (Schedule III—Parking prohibited at all times on certain streets.):**

- 355.Firehouse Drive from Montwood Drive to a point 242 feet south, west side only;

**12.88.200 (Schedule XVII—Restrictions on parking in residential districts.):**

- Zone K:** No parking 7:00 a.m. to 4:00 p.m., school days only;
- Zone N:** No parking 7:00 a.m. to 4:00 p.m., school days only;





# Existing Conditions



12.88.041 (Schedule IVA—Parking prohibited during certain hours—School days only):



A. No parking, 7:00 a.m. to 4:00 p.m. on any street or parts of streets from Monday through Friday on any regularly scheduled School Day.

- 3. 12100—12141 Frank Cordova Circle;
- 4. Mike Andrade Place;
- 5. Luis Gomez Place;
- 14. Firehouse Drive, between Montwood Drive and Saul Kleinfeld, east side only;



# Proposed Conditions



12.88.041 (Schedule IVA—Parking prohibited during certain hours—School days only):



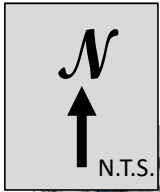
## Add paragraph

B. No parking, **7:00 a.m. to 5:00 p.m.** on any street or parts of streets from Monday through Friday on any regularly scheduled School Day.

1. 12100—12141 Frank Cordova Circle;
2. Mike Andrade Place;
3. Luis Gomez Place;

# Existing Conditions

12.88.030 (Schedule III—Parking prohibited at all times on certain streets.):

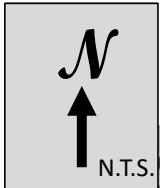


355. Firehouse Drive from Montwood Drive to a point 242 feet south, west side only;



# Proposed Conditions

12.88.030 (Schedule III—Parking prohibited at all times on certain streets.):



355. Firehouse Drive from Montwood Drive to Saul Kleinfeld Drive, both sides;

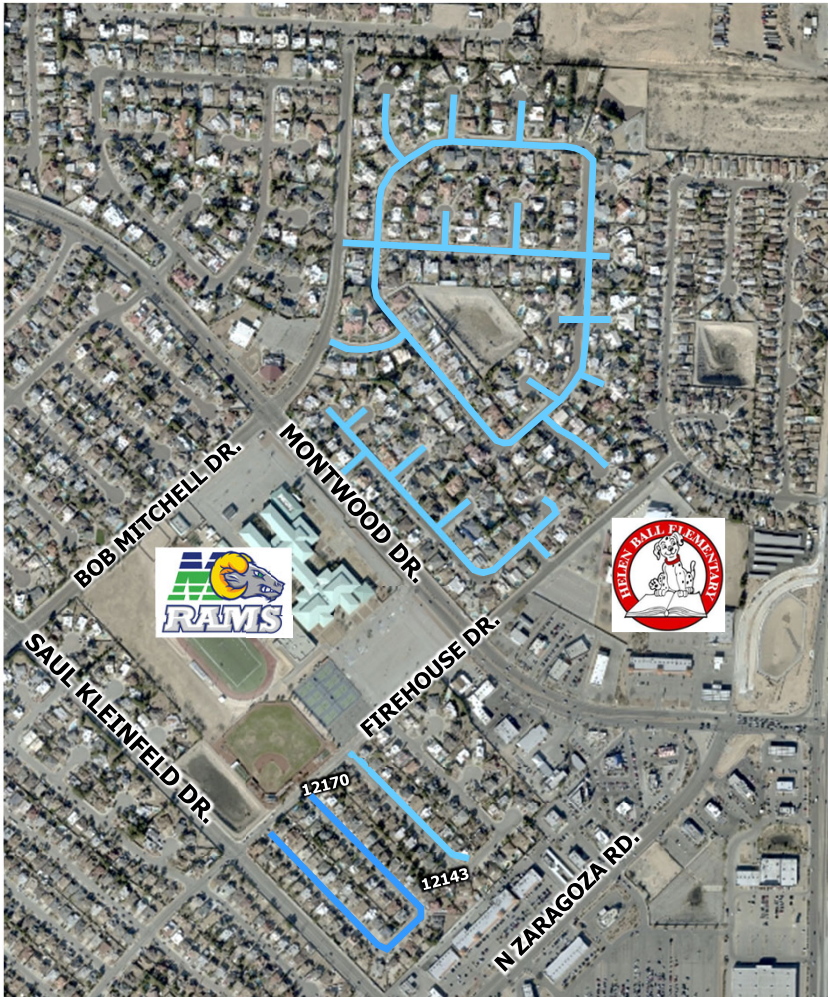
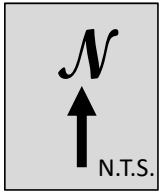


Amendment to Title 12, Ch. 12.88, § 12.88.041; § 12.88.030; § 12.88.200





# Existing Conditions



## 12.88.200 (Schedule XVII—Restrictions on parking in residential districts.):

**Zone K:** No parking 7:00 a.m. to 4:00 p.m., school days only:

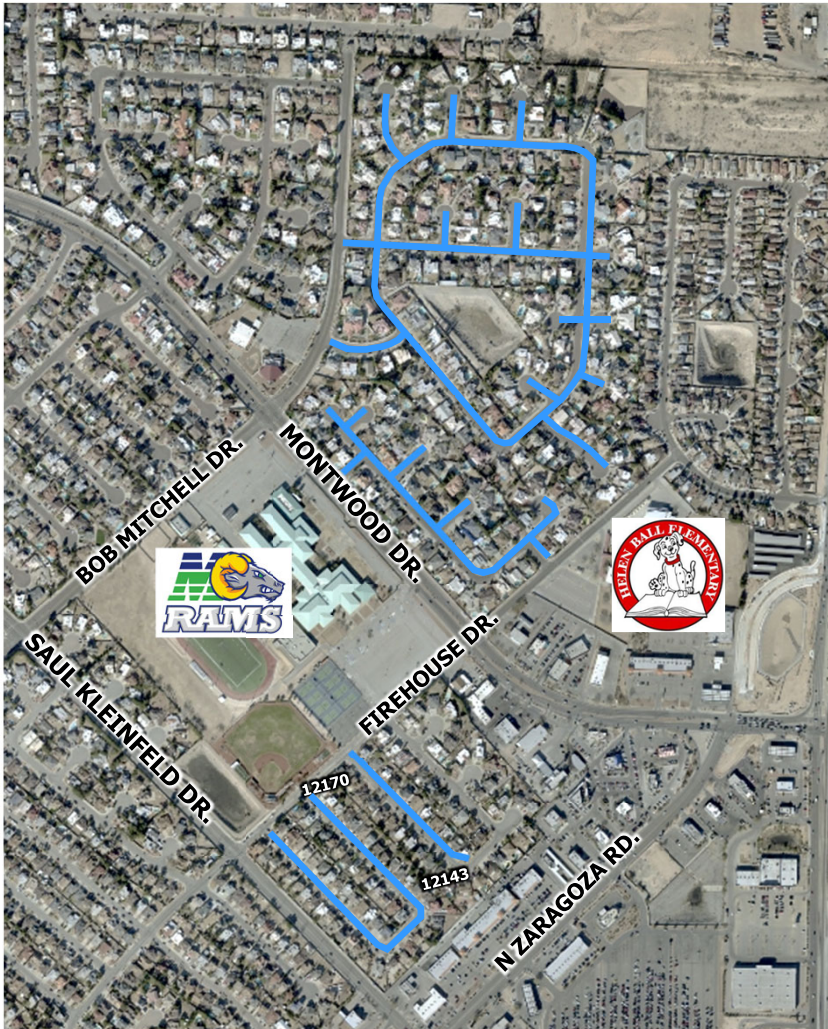
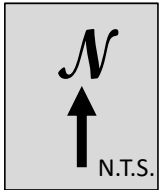
6. Frank Cordova Circle—12143—12170;
12. Paseo Antiguo Drive;
13. Paseo Arena Place;
14. Paseo Colina Place;
15. Paseo de Amor Lane;
16. Paseo de Oro Lane;
17. Paseo del Prado Drive;
18. Paseo del Sol Place;
19. Paseo Granada Lane;
20. Paseo Segovia Place;
21. Paseo Solo Lane;
22. Pueblo Azul Lane;
23. Pueblo Corona Lane;
24. Pueblo Laguna Drive;
25. Pueblo Nubes Lane;

**Zone N:** No parking 7:00 a.m. to 4:00 p.m., school days only:

1. Both sides of Alex Guerrero Circle



# Proposed Conditions



## 12.88.200 (Schedule XVII—Restrictions on parking in residential districts.):

**Zone N:** No parking 7:00 a.m. to 5:00 p.m., school days only:

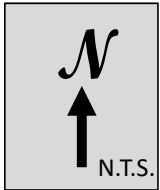
1. Alex Guerrero Circle;

### Add

2. Frank Cordova Circle—12143—12170;
3. Paseo Antiguo Drive;
4. Paseo Arena Place;
5. Paseo Colina Place;
6. Paseo de Amor Lane;
7. Paseo de Oro Lane;
8. Paseo del Prado Drive;
9. Paseo del Sol Place;
10. Paseo Granada Lane;
11. Paseo Segovia Place;
12. Paseo Solo Lane;
13. Pueblo Azul Lane;
14. Pueblo Corona Lane;
15. Pueblo Laguna Drive;
16. Pueblo Nubes Lane;



# Requested Council Action / Proposed Conditions



**Staff recommends approval.**

## 12.88.041 (Schedule IVA—Parking prohibited during certain hours—School days only):

To amend paragraph A to delete certain streets and to add paragraph

- B. No parking, 7:00 a.m. to 5:00 p.m. on any street or parts of streets from Monday through Friday on any regularly scheduled School Day.

## 12.88.030 (Schedule III—Parking prohibited at all times on certain streets.):

To amend the prohibited parking area

- 355. Firehouse Drive from Montwood Drive to Saul Kleinfeld Drive, both sides;

## 12.88.200 (Schedule XVII—Restrictions on parking in residential districts.):

To amend Zone K to delete certain streets and amend Zone N to amend prohibited parking times and add certain streets

- Zone N:** No parking 7:00 a.m. to 5:00 p.m., school days only:

