



ITEM 9

588 S. Yarbrough Detailed Site Development Plan

PZDS20-00026

Strategic Goal 3.

Promote the Visual Image of
El Paso





Recommendation

- Staff recommend approval of the Detailed Site Development Plan
- CPC recommended approval (8-0) on October 29, 2020

PZDS20-00026



Aerial

This map is designed for illustrative purposes only. The features depicted here are approximate and more site-specific studies may be required to draw accurate conclusions. Enlargements of this map to scales greater than its original can induce errors and may lead to misinterpretations of the data. The Planning & Inspections Department Planning Division makes no claim to its accuracy or completeness.



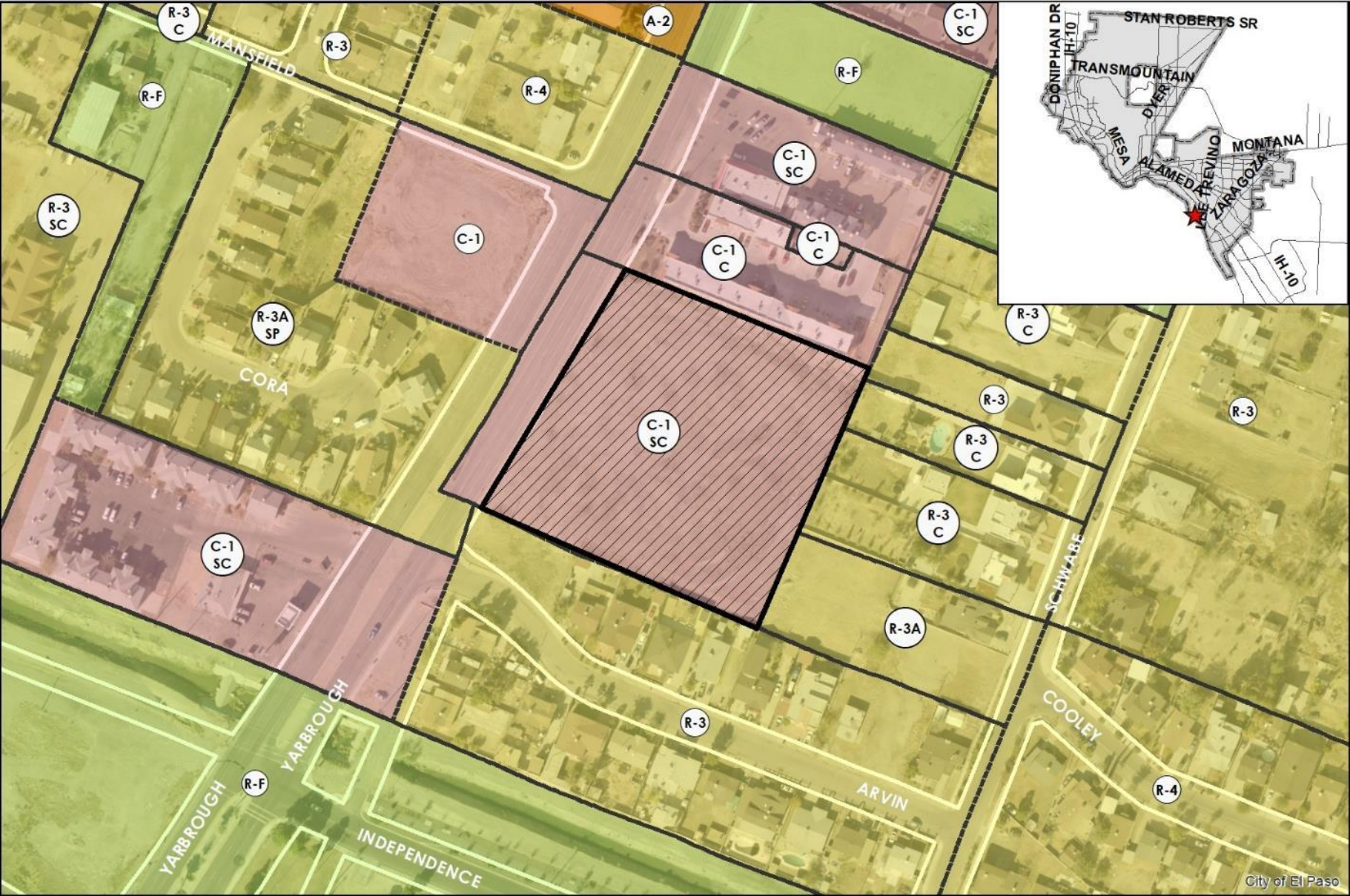
 Subject Property



PZDS20-00026



Existing Zoning



This map is designed for illustrative purposes only. The features depicted here are approximate and more site-specific studies may be required to draw accurate conclusions. Enlargements of this map to scales greater than its original can induce errors and may lead to misinterpretations of the data. The Planning & Inspections Department Planning Division makes no claim to its accuracy or completeness.



 Subject Property





**CLUB HOUSE/APARTMENT
SIDE ELEVATION 2**

SCALE: 3/32" = 1'-0"



TYP. SIDE ELEVATION 4

SCALE: 1/16" = 1'-0"



**CLUB HOUSE/APARTMENT
FRONT ELEVATION 3**

SCALE: 3/32" = 1'-0"

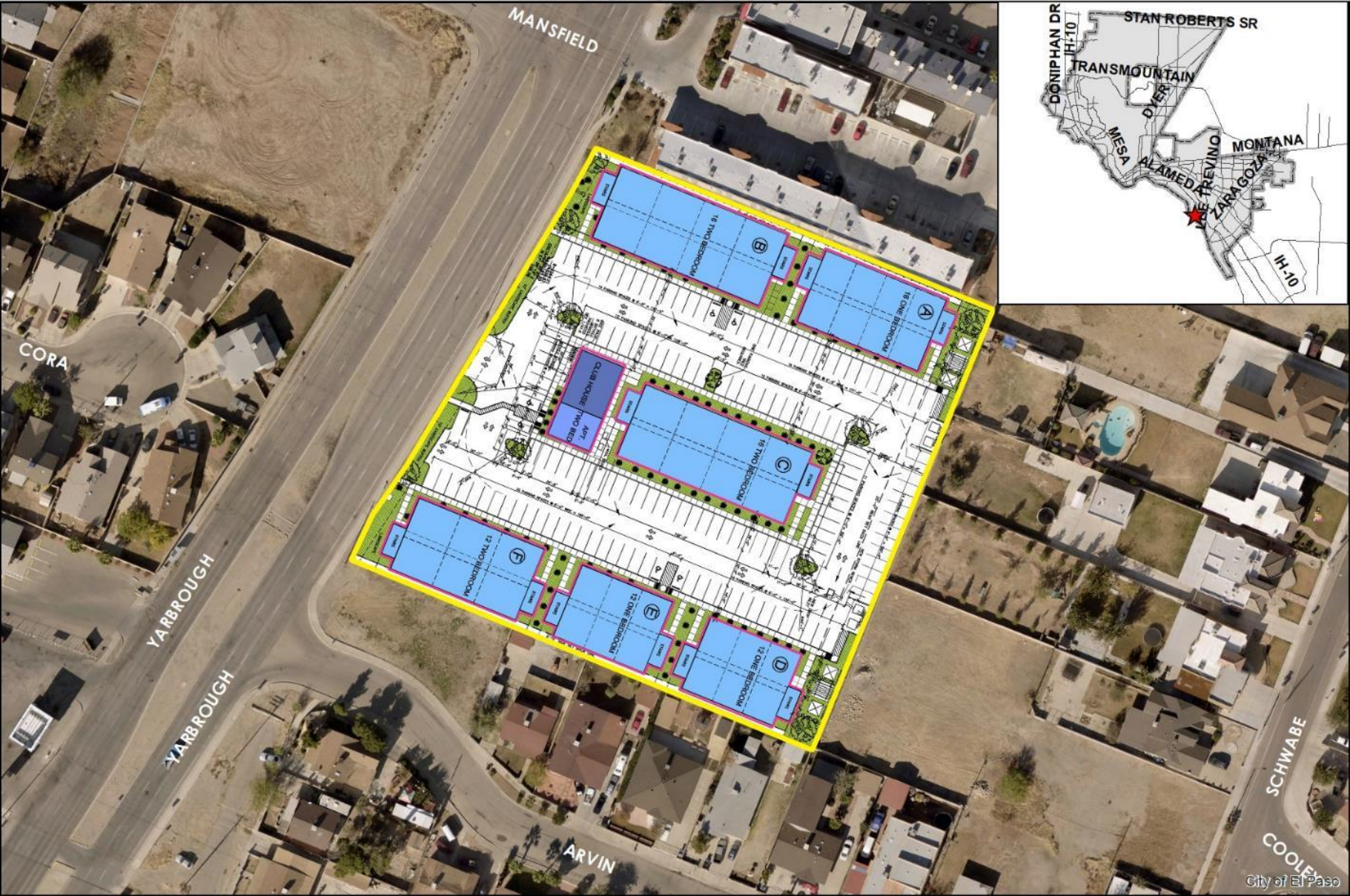


TYP. FRONT ELEVATION 5

SCALE: 1/16" = 1'-0"

Elevations

PZDS20-00026



Aerial with Site Plan

This map is designed for illustrative purposes only. The features depicted here are approximate and more site-specific studies may be required to draw accurate conclusions. Enlargements of this map to scales greater than its original can induce errors and may lead to misinterpretations of the data. The Planning & Inspections Department Planning Division makes no claim to its accuracy or completeness.



Subject Property

A wide-angle photograph of a vacant lot. In the foreground, there is a dark asphalt road with white dashed lane markings. A concrete curb separates the road from a gravelly area. Two orange traffic cones are placed on the gravel area. Beyond the gravel, there is a large, flat, brownish-yellow field of dry grass. In the background, there are several residential buildings, including a large, multi-story apartment-style building on the left and several smaller houses. A utility pole with power lines is visible on the right side of the image. The sky is clear and blue.

588 S. Yarbrough

Surrounding Development



W



N



S

E



Public Input

- Notices not required





Mission

Deliver exceptional services to support a high quality of life and place for our community



Vision

Develop a vibrant regional economy, safe and beautiful neighborhoods and exceptional recreational, cultural and educational opportunities powered by a high performing government



Values

Integrity, Respect, Excellence, Accountability, People