



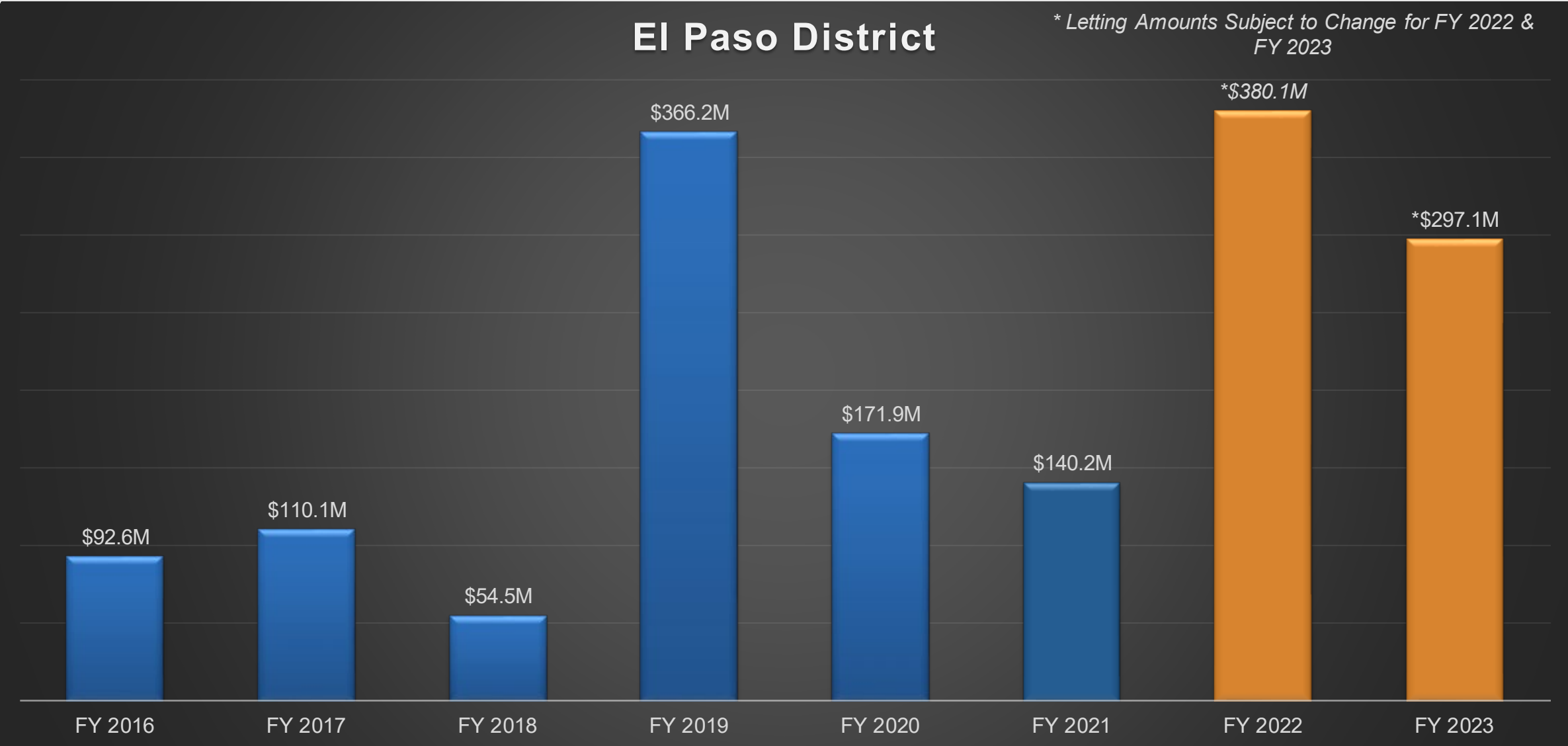
El Paso District Project Update June 2022

Connecting You To Texas



June 16, 2022

El Paso District Letting Volumes FY 2016 – FY 2023



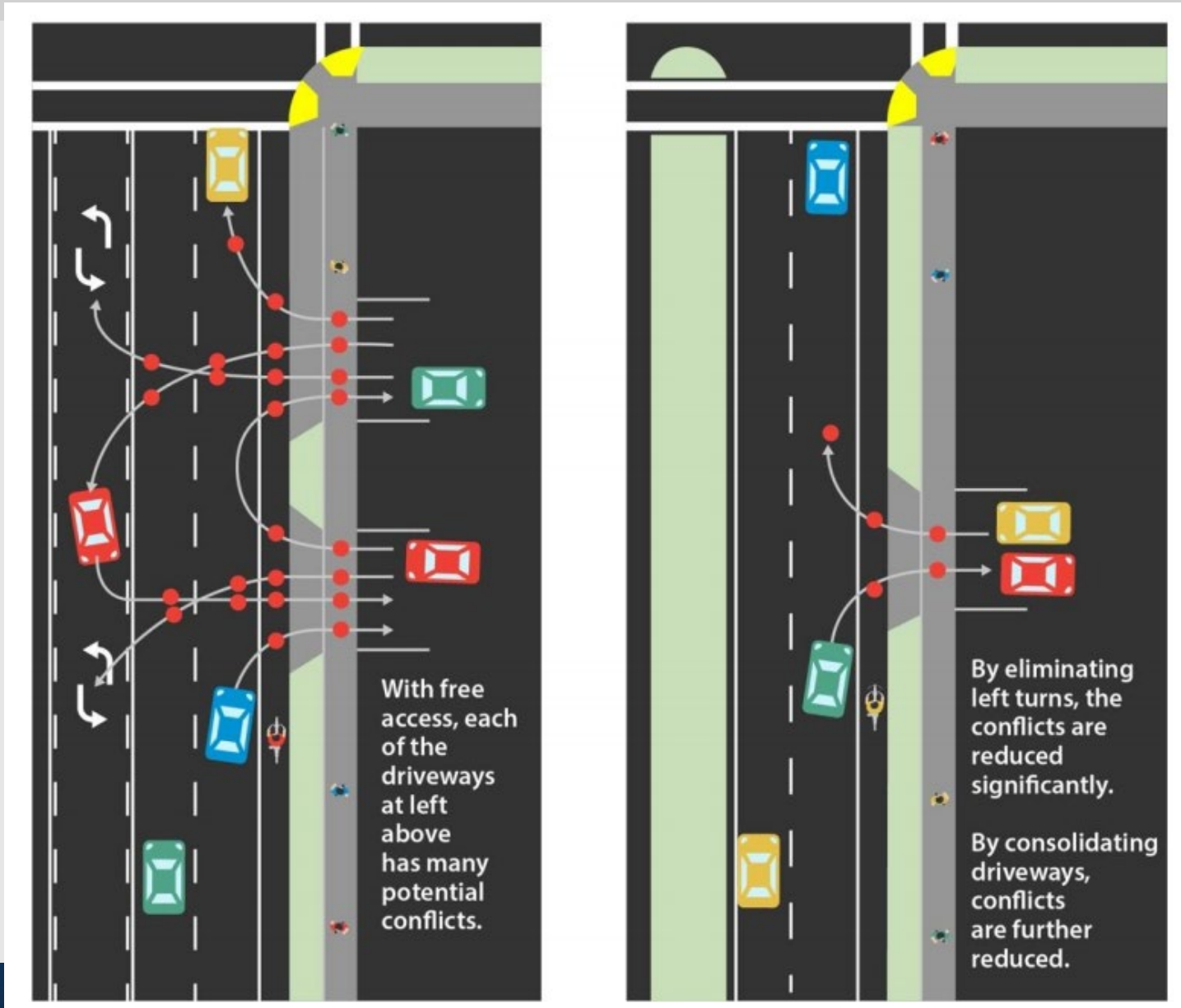
Raised Median Safety Projects, with Lighting and Pedestrian Safety



- Dyer, Monroe to Kemp
- Dyer, US 54 to Hercules
- Copia, I-10 to Clifton
- Paisano, Santa Fe to Stanton
- Paisano, Stanton to Saint Vrain
- McCombs, south of US 54 to Dyer
- Montana, Cessna to Hawkins
- Alameda, east of Loop 375
- Zaragoza, North Loop to Montana
- Mesa, Cincinnati District
- Lee Trevino at La Quinta



Driveway Conflicts Contribute to Unsafe Sidewalks and Roads



Raised Median Projects Add Safety Lighting



Daytime shot, same location, MLK Blvd



Raised Median Pedestrian Safety Railing Paisano



Raised Median Pedestrian Safety Railing on North Mesa Street



New Pavement, Sidewalks, Luminaires on Zaragoza Raised Median Project



Raised Median Green Ribbon Project



- Proposed work
 - Planter bed cut outs on existing concrete medians
 - Xeriscape plant schemes
 - Loose aggregate
 - Irrigation system

- Funded Amount
 - \$875,000

- Letting date
 - June 2022

- Locations
 - Montana Avenue
 - Doniphan
 - Alameda



Montana Raised Medians and Illumination Safety Project



Montana Ave.
➤ From Airway Blvd. to Sam Moore Pl.

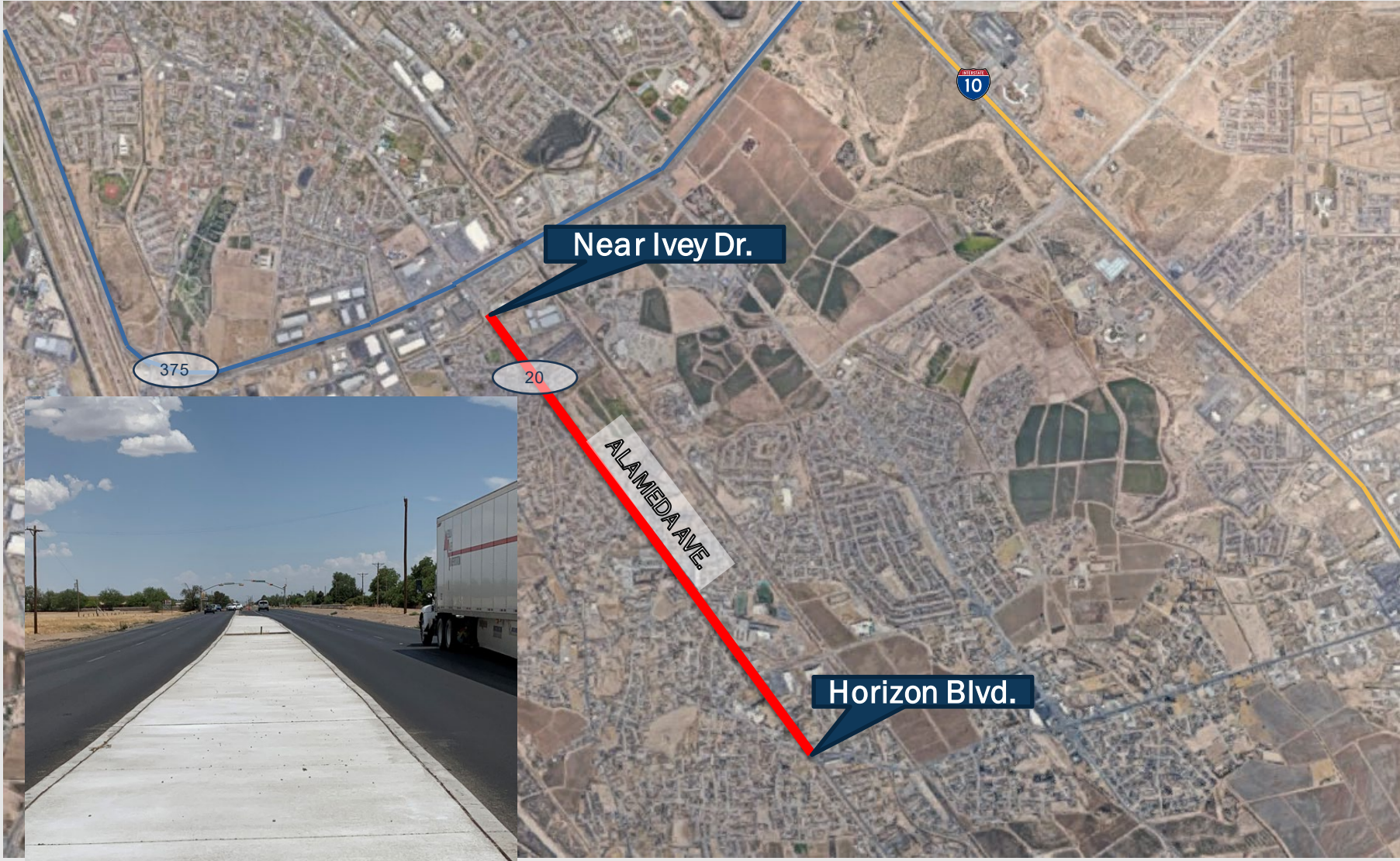


Doniphan Raised Medians, Sidewalks, and Illumination Safety Project



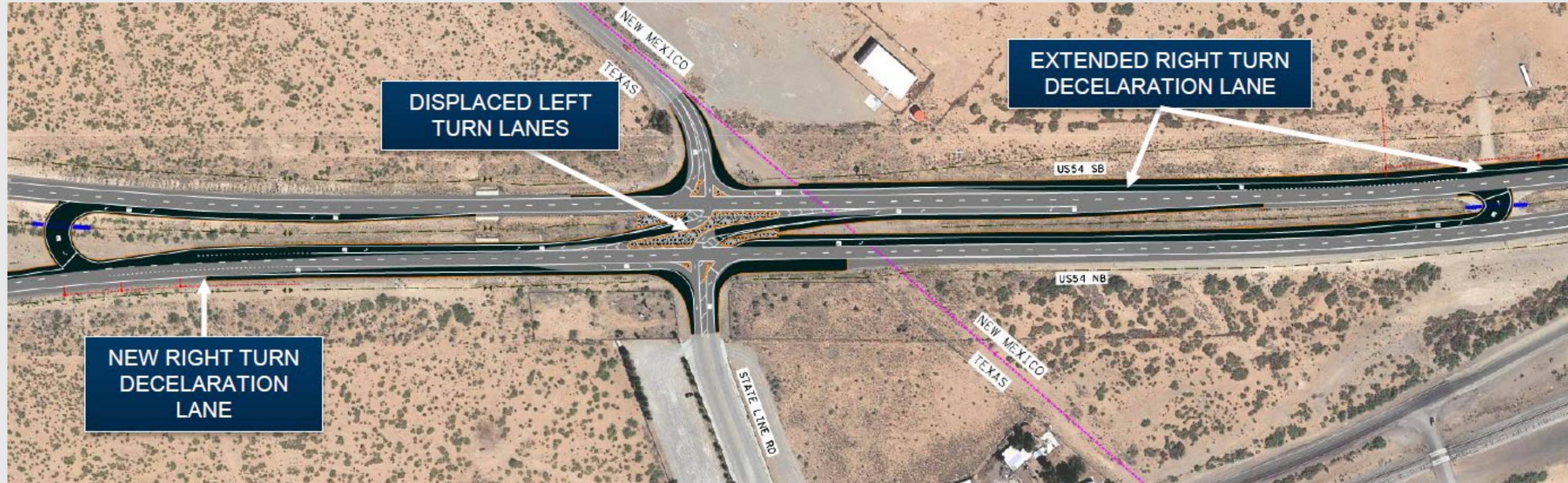
Doniphan Dr.
➤ From Artcraft Road to Thorn

Alameda Raised Medians, Illumination, and Pavement Rehab Safety Project



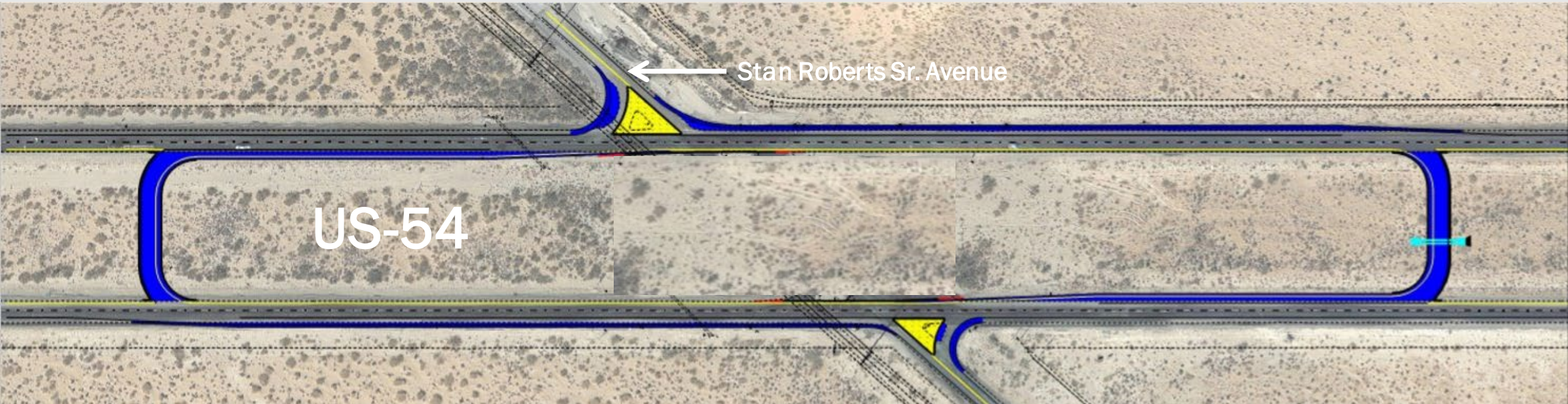
Alameda Ave.

- From 0.25 Miles South of Loop 375 (near Ivey Dr.) to 2.256 South of Loop 375 (near Horizon Blvd.)



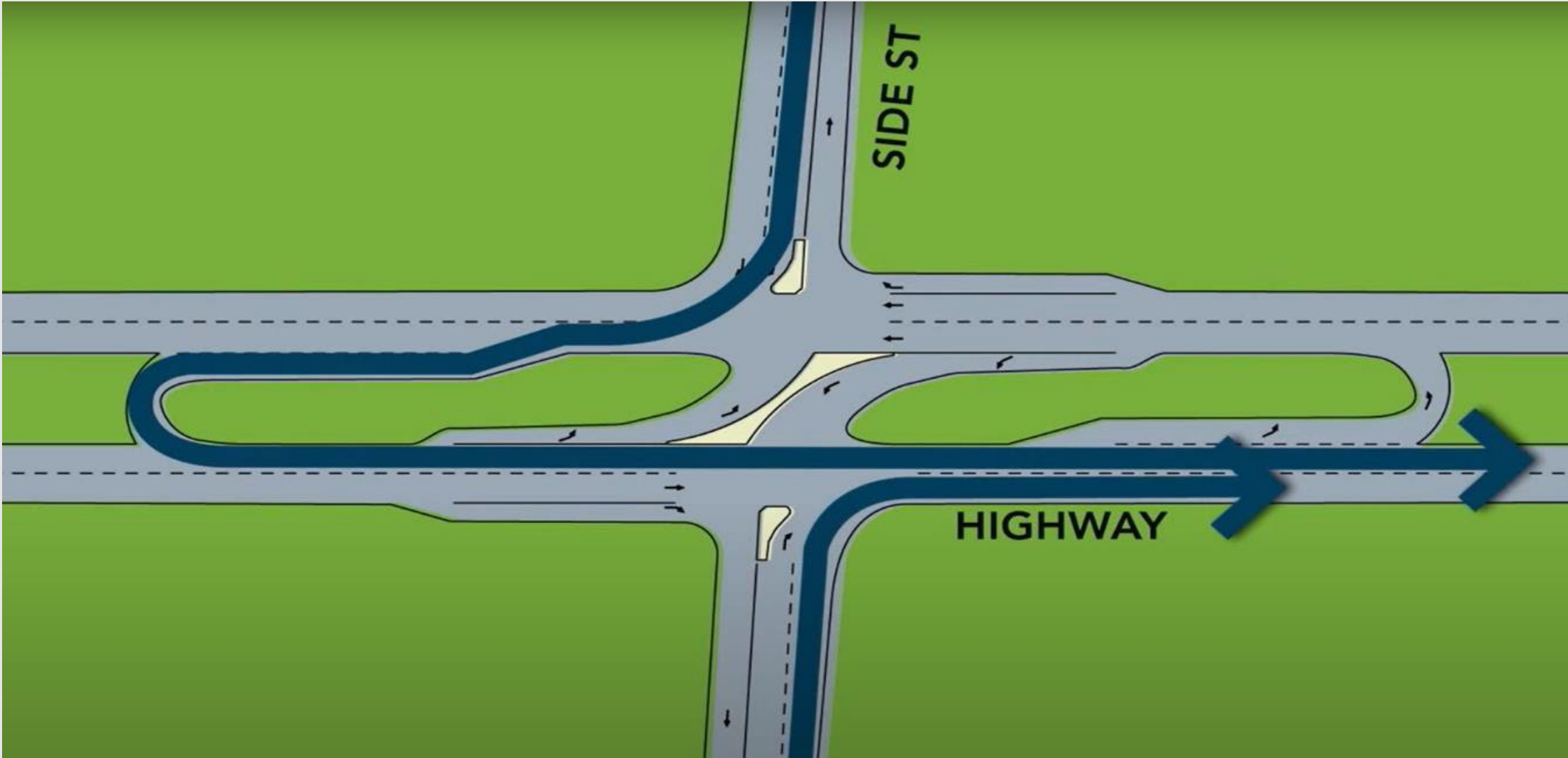
Innovative intersection design that reduces conflict points. (To include safety lighting.)

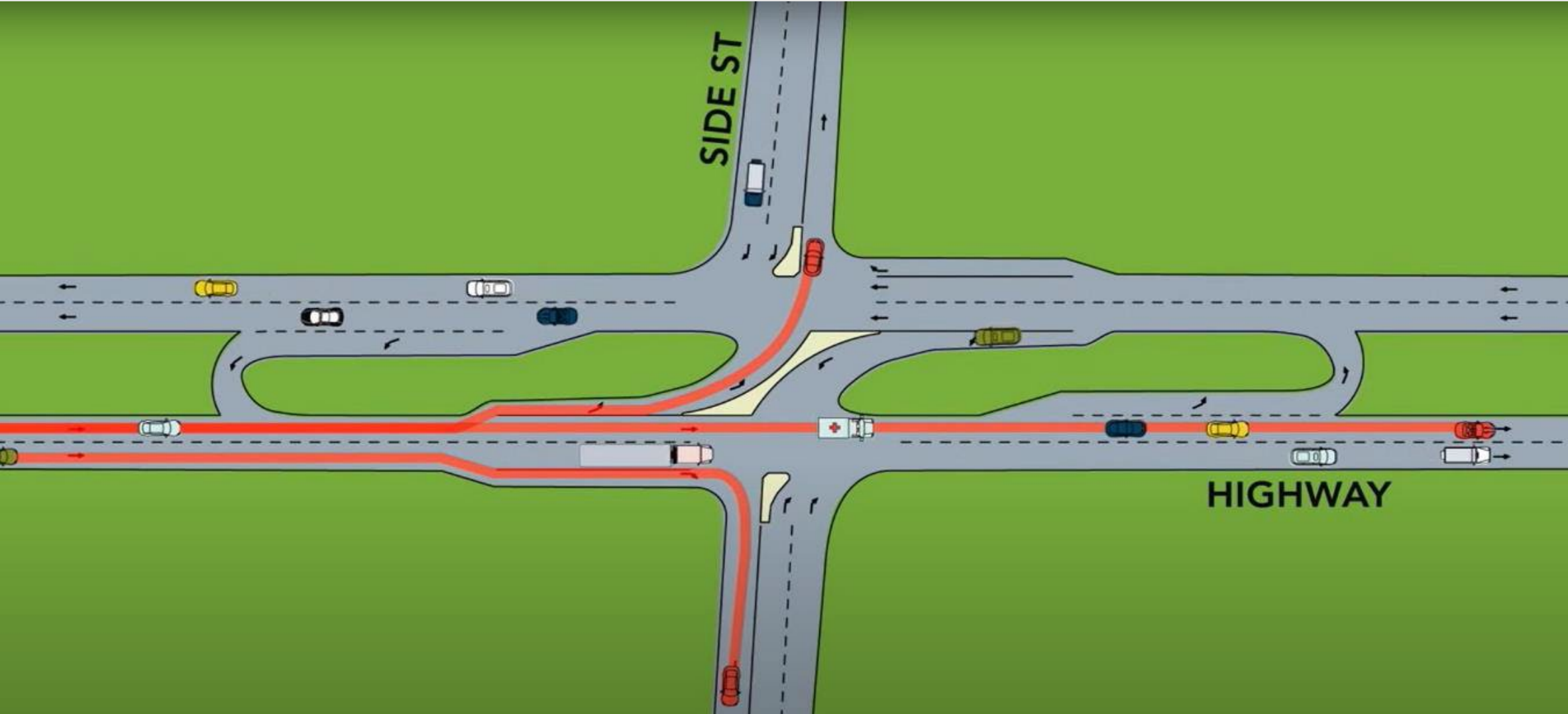
J-Turn at US-54 and Stan Roberts

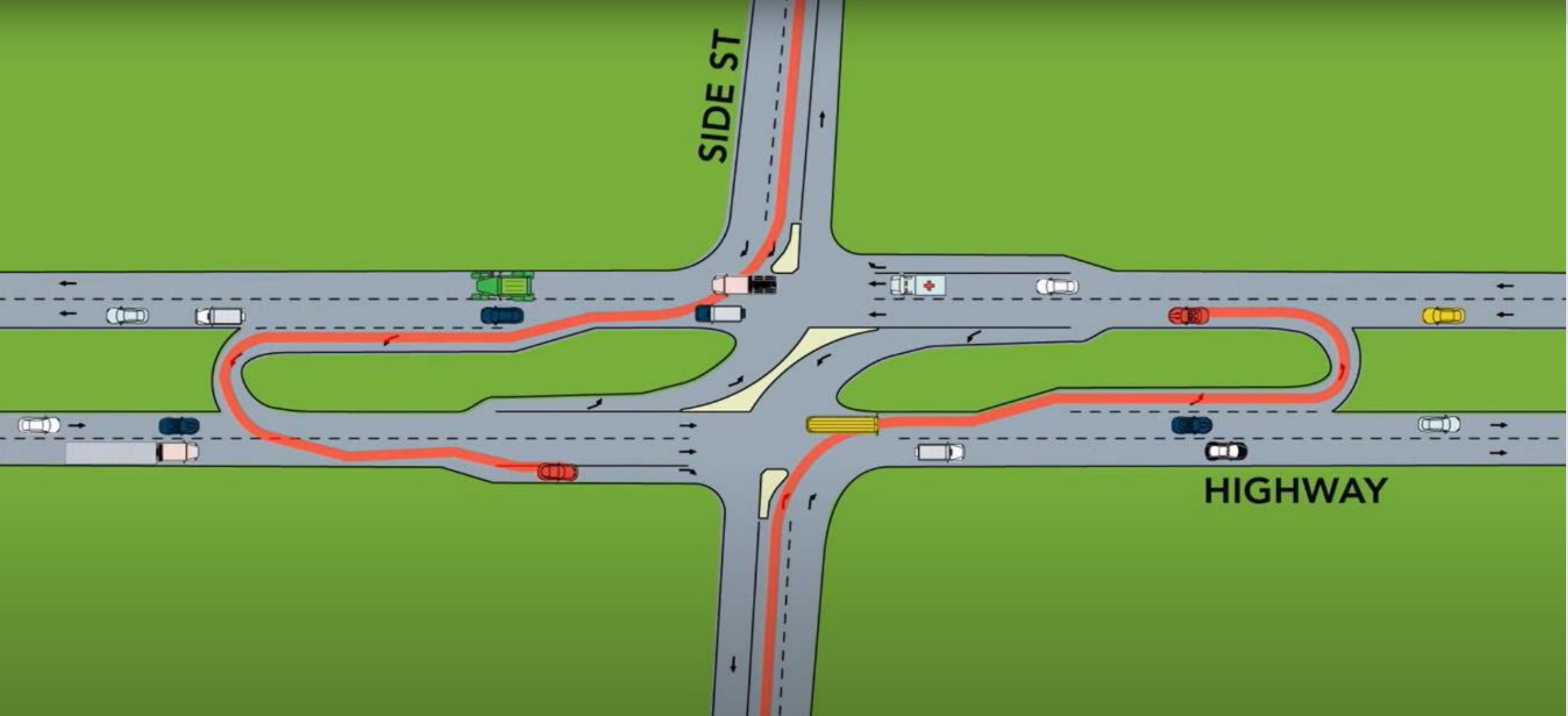


Innovative intersection design that reduces conflict points. (To include safety lighting.)

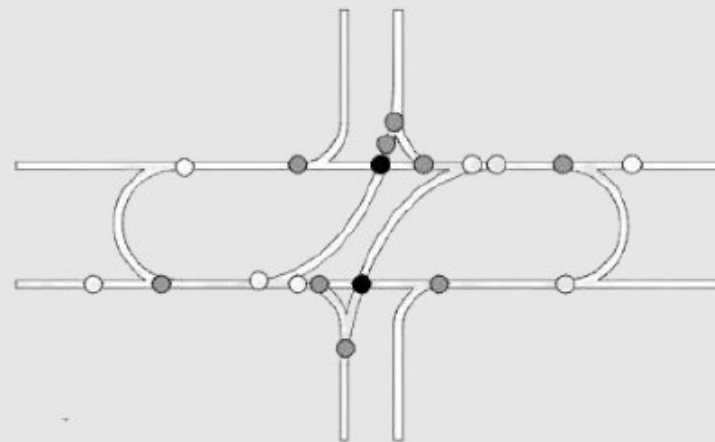
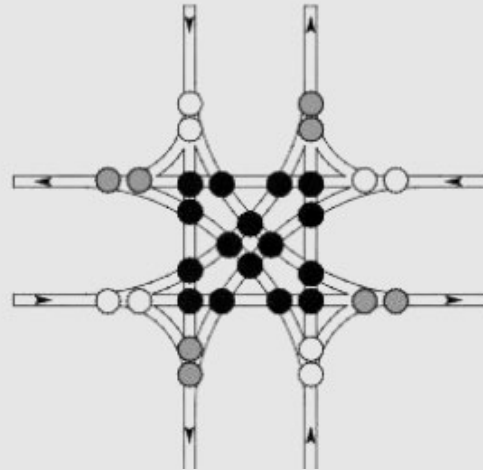
Restricted Crossing U-Turn Intersection (RCUT)







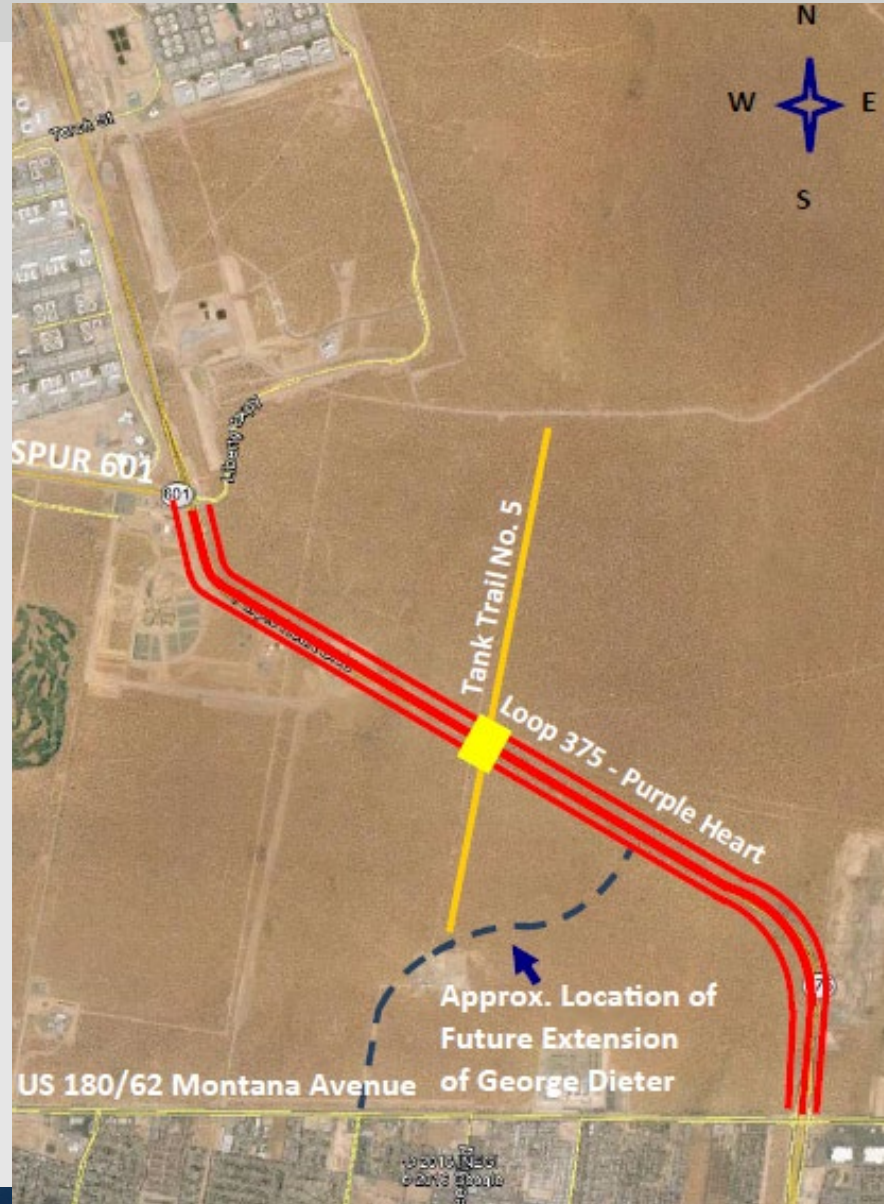
R-Cut Conflict Points



Purple Heart Widening and Frontage Roads – Spur 601 to Montana



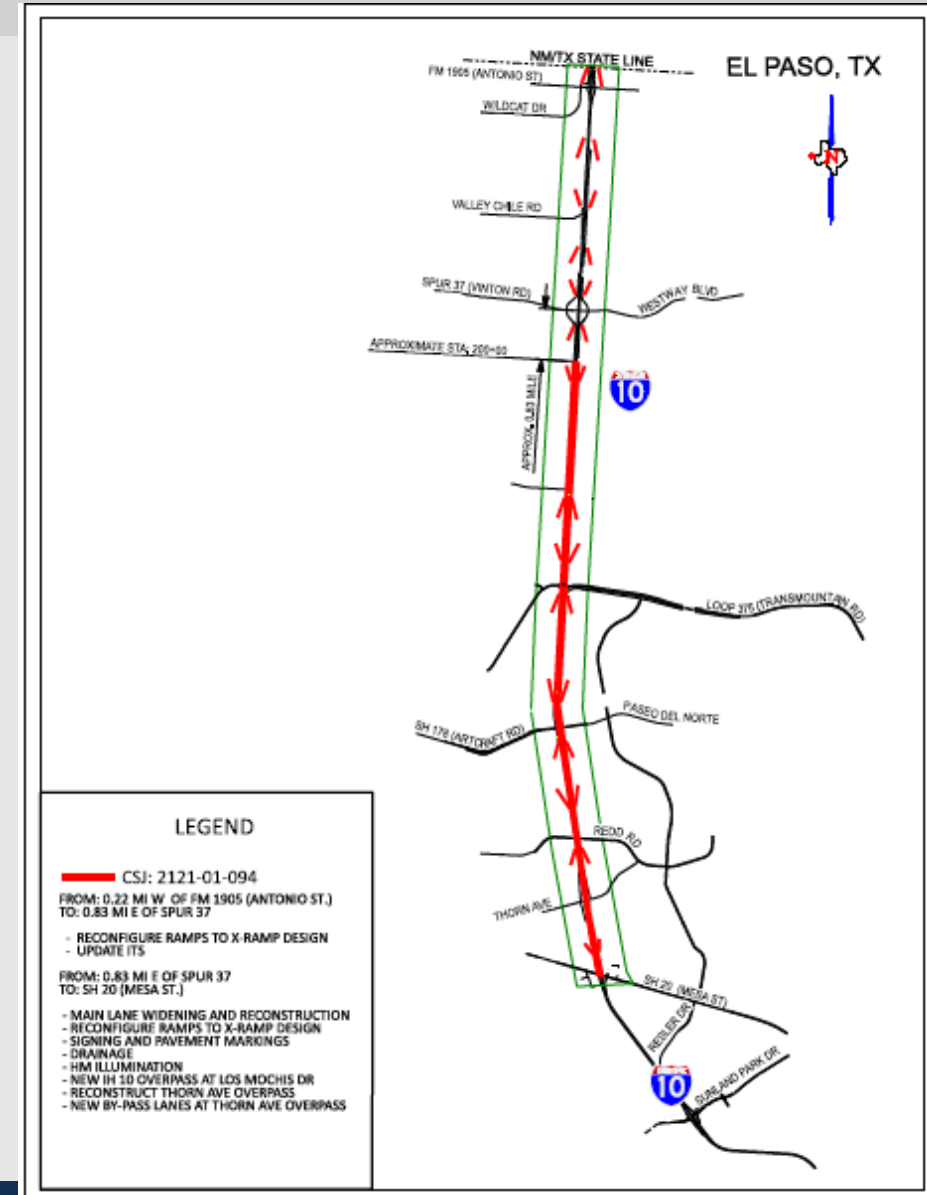
- **Highway:** SL 375
- **Limits:** From Spur 601 to Montana Ave (US 62/180)
- **Description:** Widen From 4 to 6 Lanes on Main Lanes and Construct 2 Lane Frontage Roads.
 - Joint Bid with El Paso Water to relocate their existing 48” water line.
- **Cost:** \$137.9 Million
- **Let Date:** May 2022



I-10 Widening West, North Mesa to NM State Line



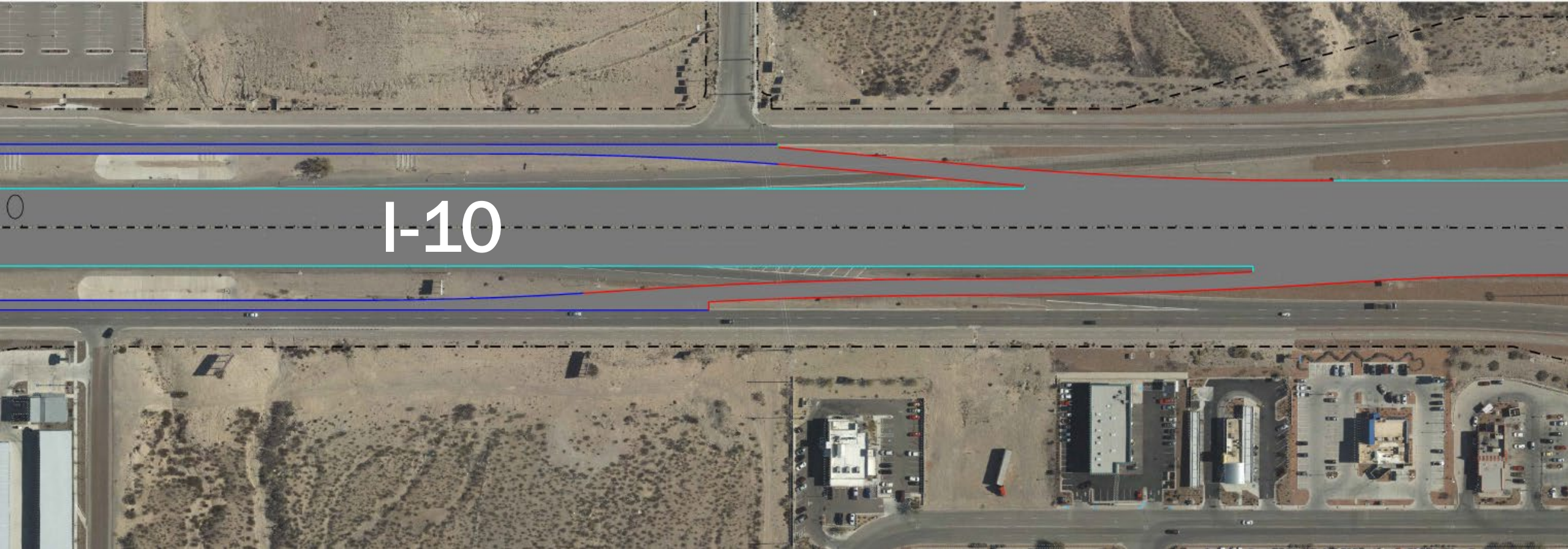
- **County:** El Paso
- **Highway:** I-10
- **Limits:** from New Mexico State Line to 0.02 miles north of North Mesa Street.
- **Description:** Expand from 4 to 6 lanes from Mesa to south of Vinton; Ramp Reconfigurations; Reconstruct Existing Frontage Roads; Operational Improvements; and Installing Wrong Way Driver Advanced Technologies
- **Cost:** \$174.3 million
- **Construction Started:** May 31, 2022
- **Estimated Duration:** 3.5 years



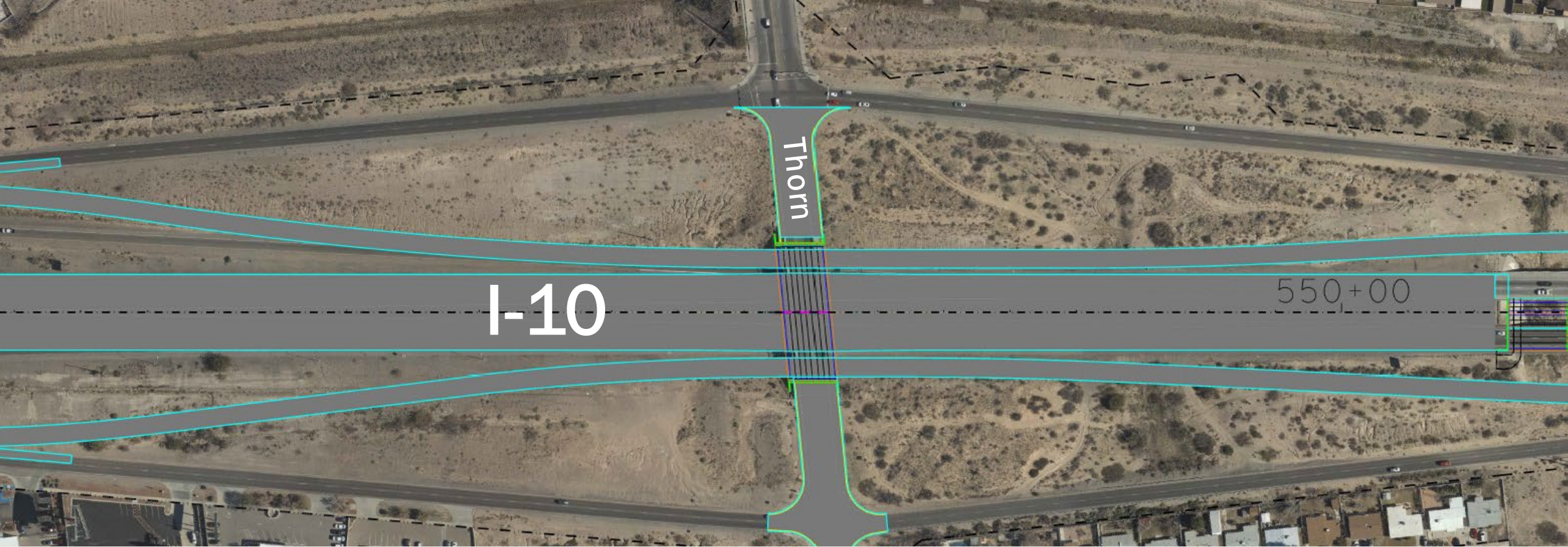
I-10 Widening West overpass at Los Mochis (1.2 miles N of Transmountain)



I-10 Widening West Ramp Reversals



I-10 Widening West Thorn Bypass Lanes



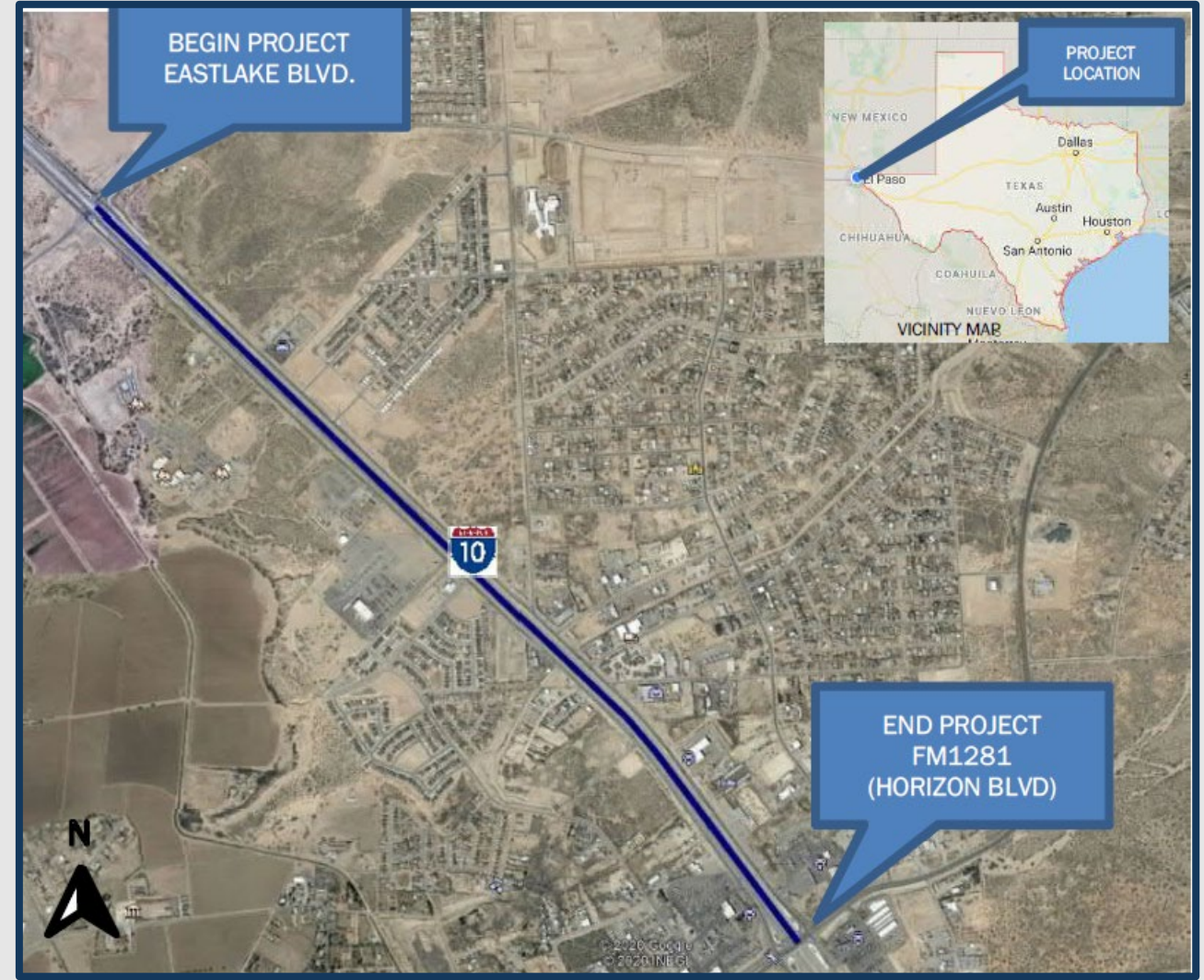
I-10 Widening West Milling and Paving Shoulders



I-10 Widening East - Eastlake to Horizon



- **County:** El Paso
- **Highway:** IH 10
- **Limits:** From Eastlake Blvd to FM 1281 (Horizon Blvd)
- **Description:** Widen From 4 to 6 Lanes
- **Cost:** \$18 Million
- **RMS 2020 Project**



I-10 Widening East progress photos



Loop 375 Main Lane Widening, I-10 to Zaragoza



Loop 375 widening from 4 to 6 lanes from Bob Hope to Zaragoza Road (FM 659)

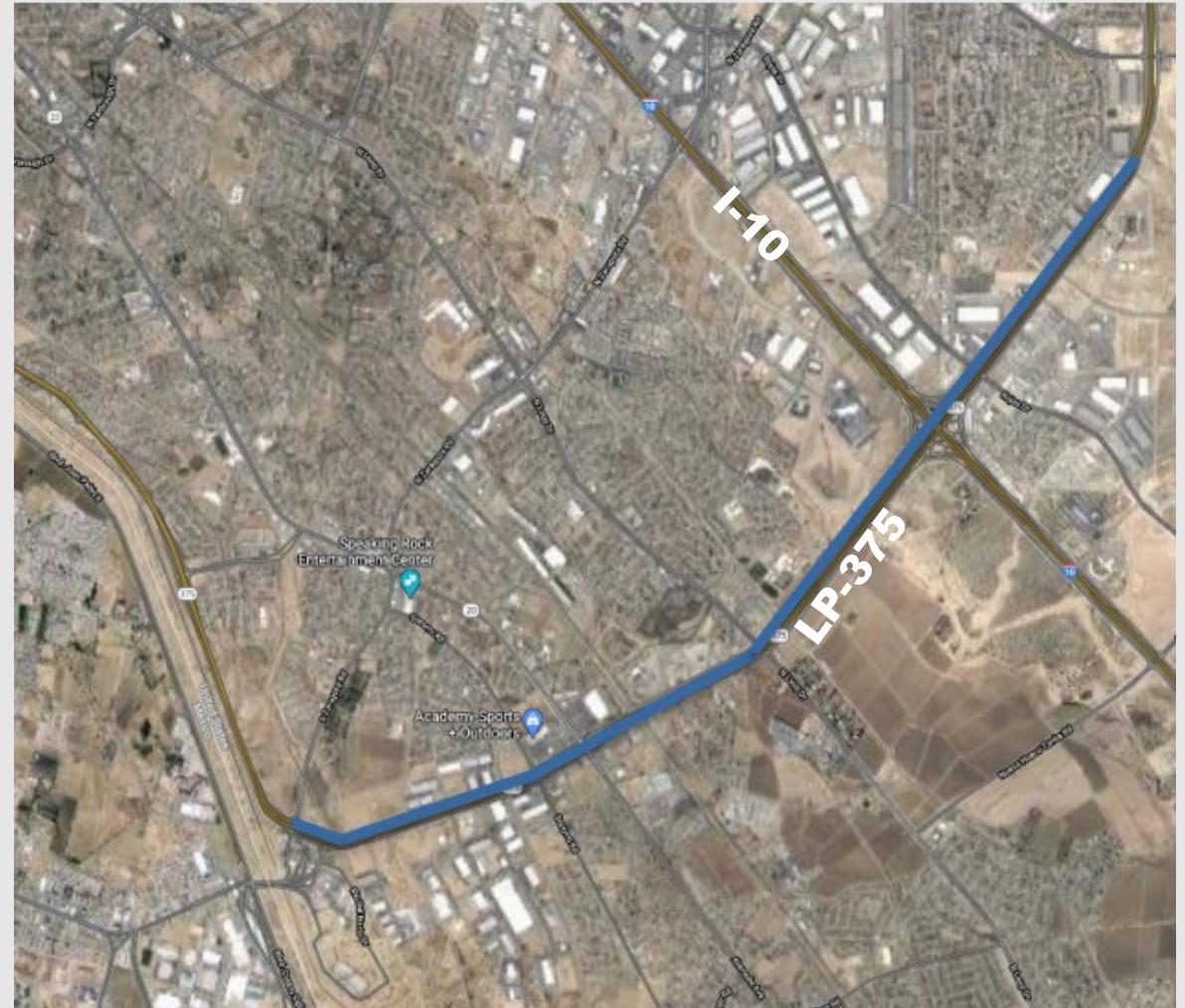
This project

- Adds capacity (includes bridge widening)
- Adds braided ramps
- Adds northbound frontage roads
- Adds high mast lighting throughout the project limits.

Construction Cost: \$75.4 Million

Start Date: Spring 2021

Est. Construction Time: 3.5 years



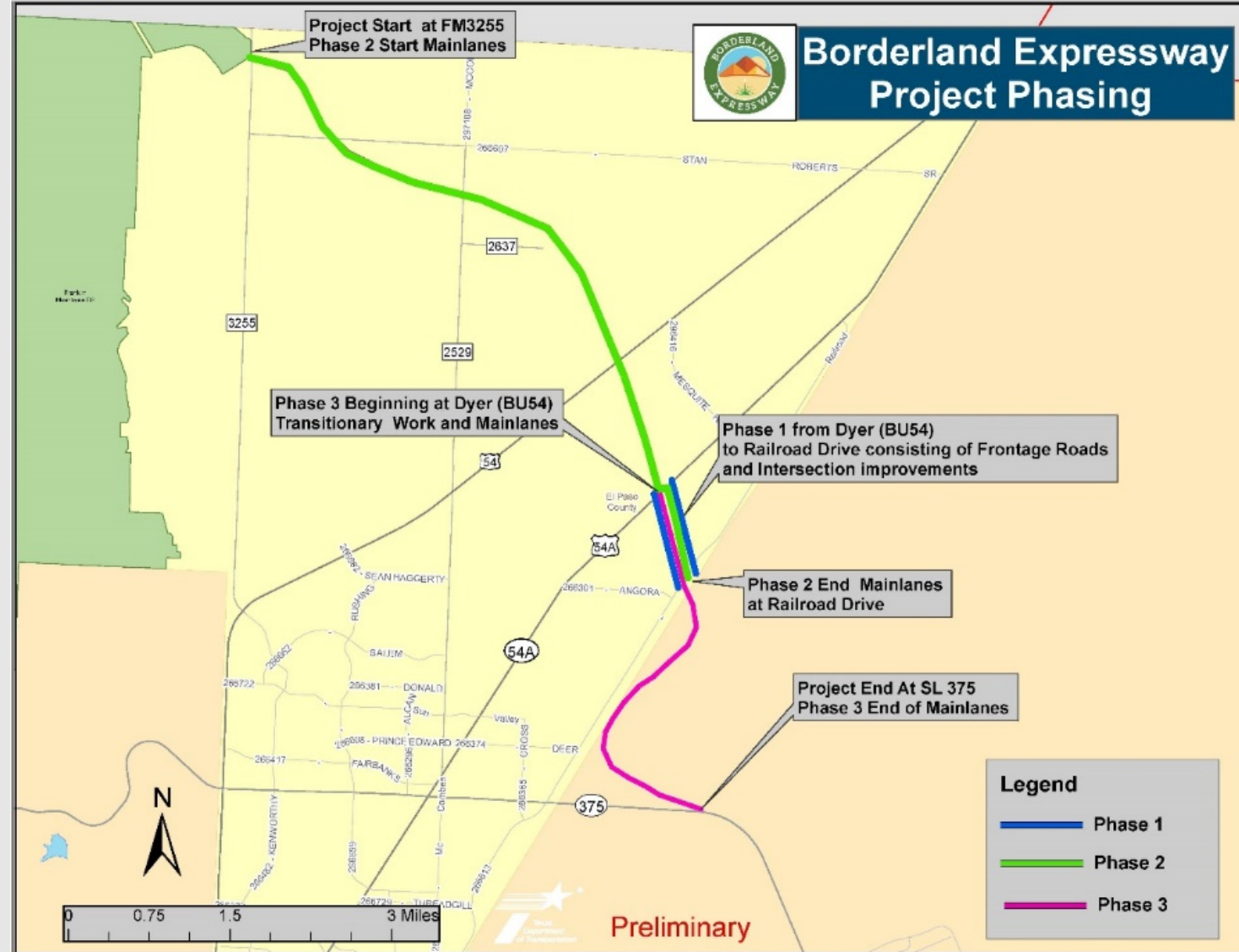
LP 375 Widening Project progress photos



Borderland Expressway



- From Loop 375 to FM 3255 (MLK Blvd)
- A proposed Texas/New Mexico bypass and freight relief route to include new location four-lane facility, grade separations, interchanges, and bicycle and pedestrian facilities in 3 Phases
- **Schematic: 100%**
- **Environmental:** Public Hearing held June 9, 2022
- **Total Construction Estimate: \$296,189,217**
- **Phase 1 Estimated Let Date: April 2023**
- **HWY: SS 320**
- **Funded Amount: \$20.4 Million**
- The virtual public hearing (a pre-recorded video presentation including both audio and visual components) is online at www.txdot.gov, keyword search "Borderland Expressway." The presentation will remain available until Friday, June 24, 2022 at 11:59 p.m. MDT.



SH 178 (Artcraft Road) Interchange



- From TX/NM State line To I-10
- Cost: \$193.5M approx.
- Purpose
 - Improve safety and reliability of travel time and modernized to accommodate oversized truck loads. (Santa Teresa POE in NM is the only oversized POE in the region).
- Proposed Improvements include:
 - Four direct connectors with two lanes, modernized to accommodate oversized truck loads, Texas turnaround bridges at South Desert Boulevard (I-10).
 - Between I-10 and SH 20 (Doniphan Drive) improvements are planned to include access control measures, reconstruction and widening, and extending frontage roads in both directions.
 - Upper Valley Road and Westside Drive planned improvements include grade separated interchanges, ramps to SH 178, and frontage roads.
- Schematic Design: Working Towards 60% (July 2022)
- Environmental Studies (NEPA): 60% (July 2022) (anticipated to be cleared late 2022/early 2023)
- PS&E (Detail Design): Working Towards 30% (September 2022)
- Estimated Let Date: 05/2023 (Subject to change)





Sign up for Traffic Alerts at [DriveTexas.org](https://www.drivetexas.org)



Follow us on Twitter [@txdotelp](https://twitter.com/txdotelp)



Like us on Facebook



Visit us online www.txdot.gov



**Are there any
questions?**

