



# Street Infrastructure Comprehensive Update

Strategic Plan Goal:  
7) Enhance and Sustain El Paso's Infrastructure Network


June 22, 2021



## **ACTIVE STREET AND CAPITAL PROGRAM STATUS**

- A. Overview**
- B. Pavement Condition Index Update**
  - **Website**
  - **Surface Treatments**
  - **New Technology/Methods (cost vs. impact)**
- C. Detailed Program slides**
  - **2012 Street CIP**
    - **Resurfacing**
    - **Reconstruction**
  - **\$3M Collector Resurfacing**
  - **\$7M Residential Resurfacing**
  - **Capital Plans**
    - **2017/2018/2019/2020**
- D. MPO and CDBG Projects**





# Pavement Condition Index (PCI)

# PCI – What is it?

- Pavement Condition Index (PCI) is data used to assess the general condition of pavement
- The data is used as a tool for initial prioritization
- Requires regular evaluation to updating conditions
- Provides forecasting which can assist and plan needed future improvements

# El Paso Results

PCI Range	Condition Description	Percent of Network
86-100	Good	26.75%
71-85	Satisfactory	22.72%
56-70	Fair	17.06%
41-55	Poor	17.59%
26-40	Very Poor	10.46%
11-25	Serious	5.00%
0-10	Very Serious	0.42%
	TOTAL	100%

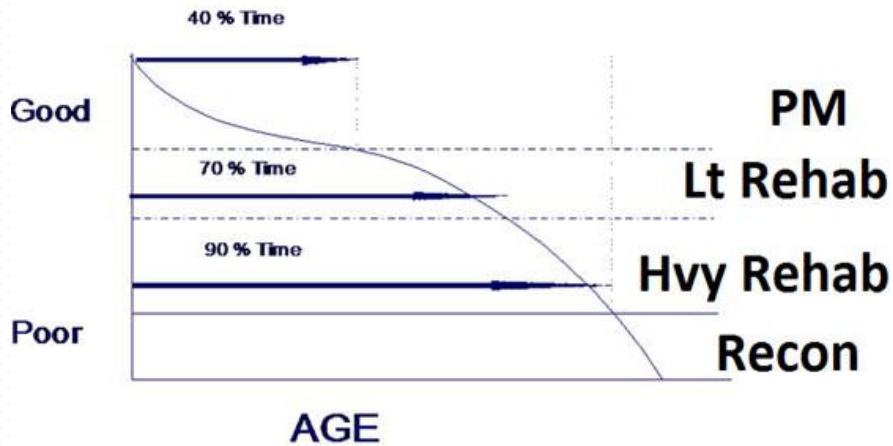
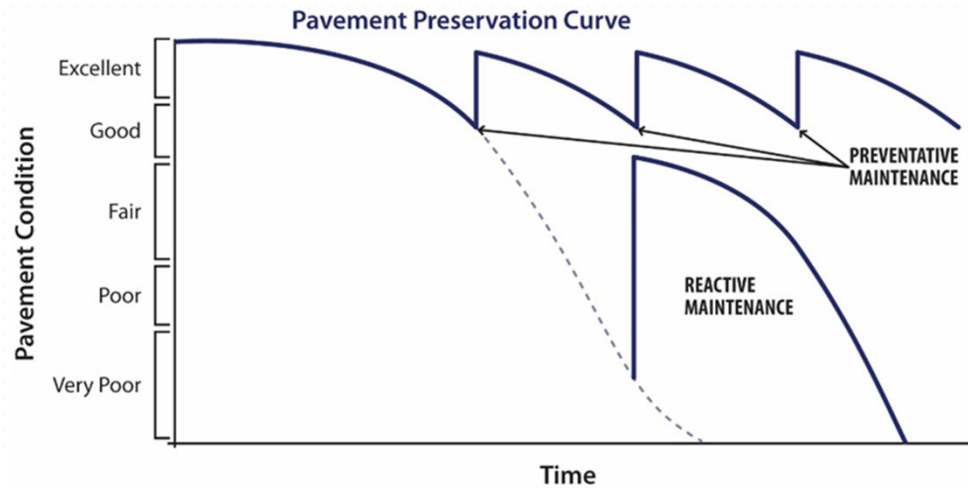
**49.5% is Satisfactory or higher**  
**50.5% is Fair or below**

## Best Practices

- Useful life of a road is 25 years
- 4% of the street inventory every year
- Average PCI at 70 or above should be our goal
- Spend a portion of the budget to keep good pavement in good condition
- Have a plan to bring poor roads to fair condition and above
- Find cost effective treatments at designated times to provide desired level of service

# Best Practices

PCI



SEALS/CRACK SEALS

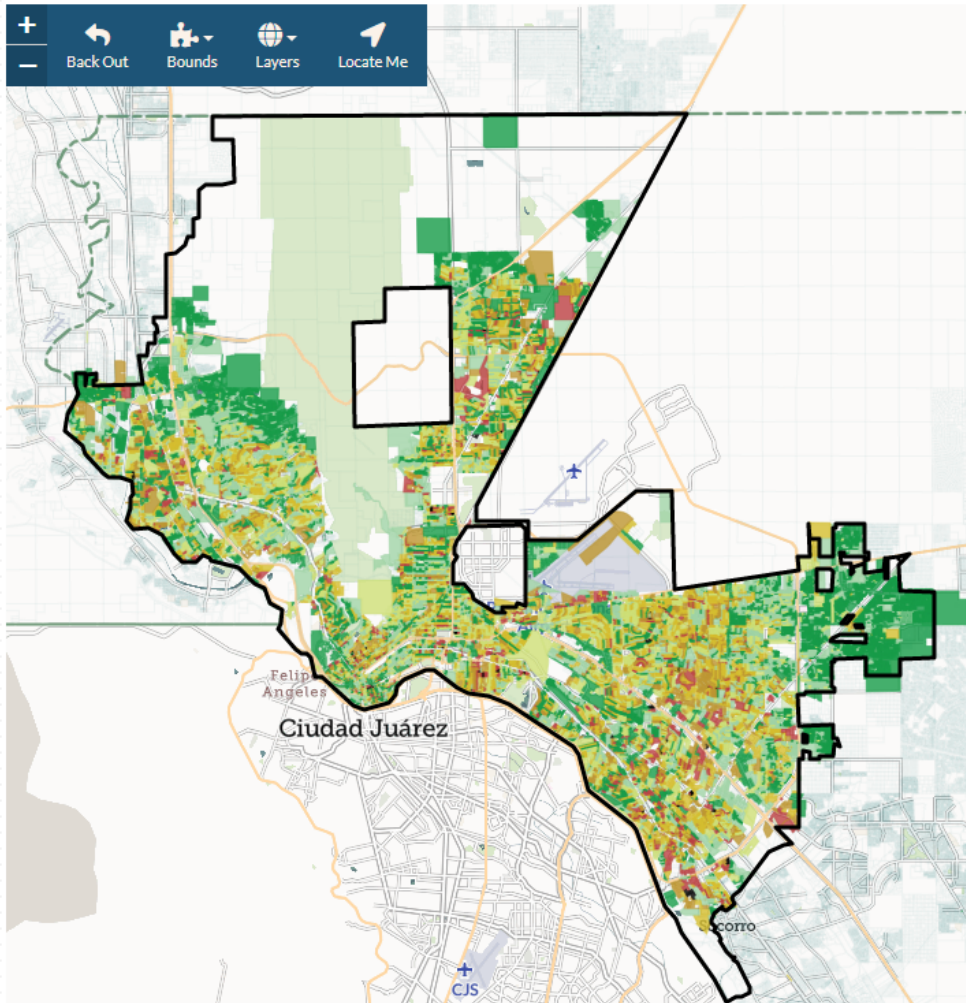
MILL AND OVERLAY

SPOT FULL DEPTH REPAIRS AND MILL AND OVERLAY

RECONSTRUCTION

- **Street Maintenance is a high priority for our community**
- **The inventory for roads in the City shows 2,500 centerline miles**
  - **\$44 Million is the estimated annual investment in order to keep the street Pavement Condition Index of 70 (out of 100)**
- **City Council Approvals**
  - **August 2018- City Council Approved \$7 M Annual Program for Residential.**
  - **December 2019 - City Council approves a dedicated \$3M Annual for street resurfacing from PSB Infrastructure Franchise Fee**

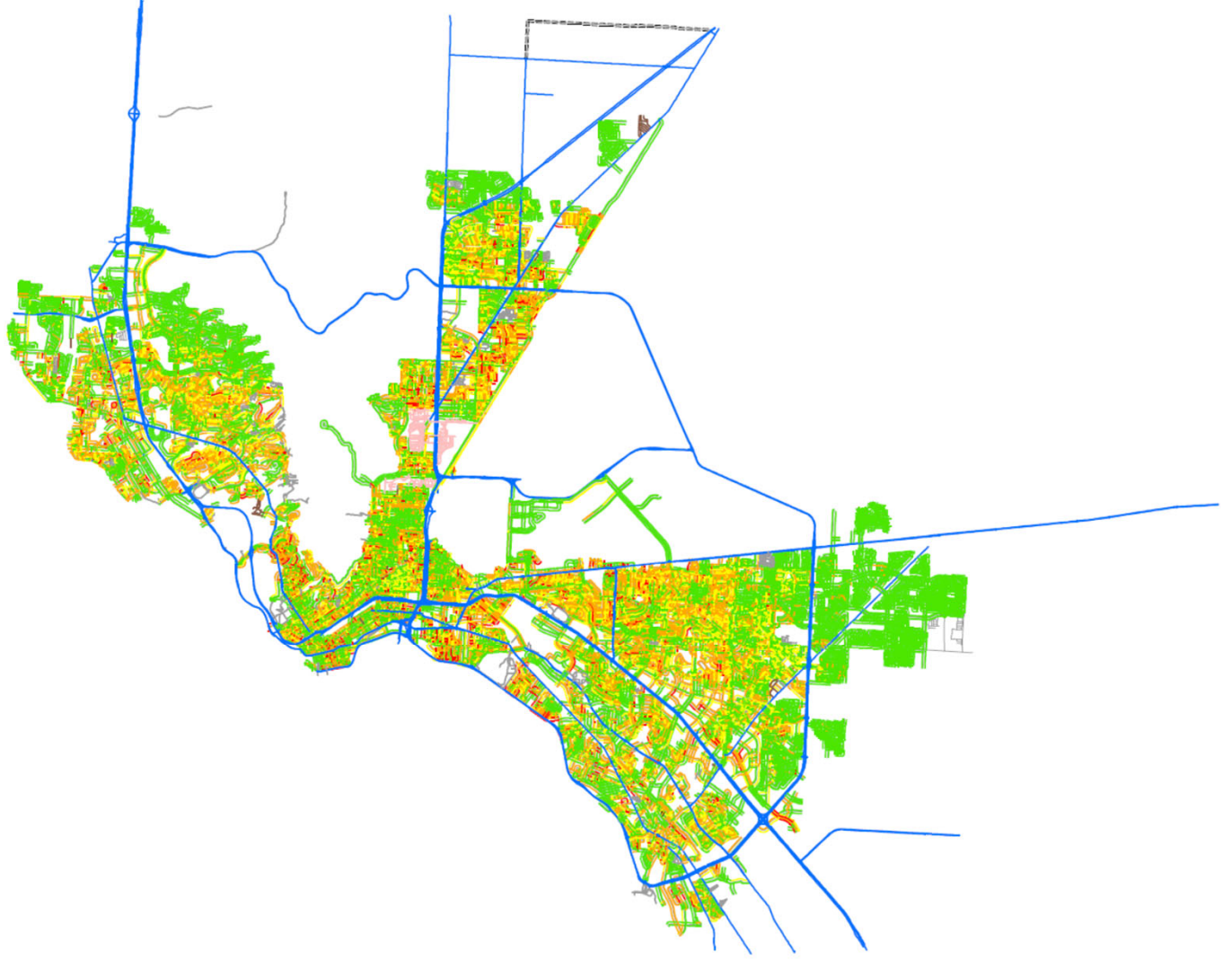




## Pavement Conditions Map

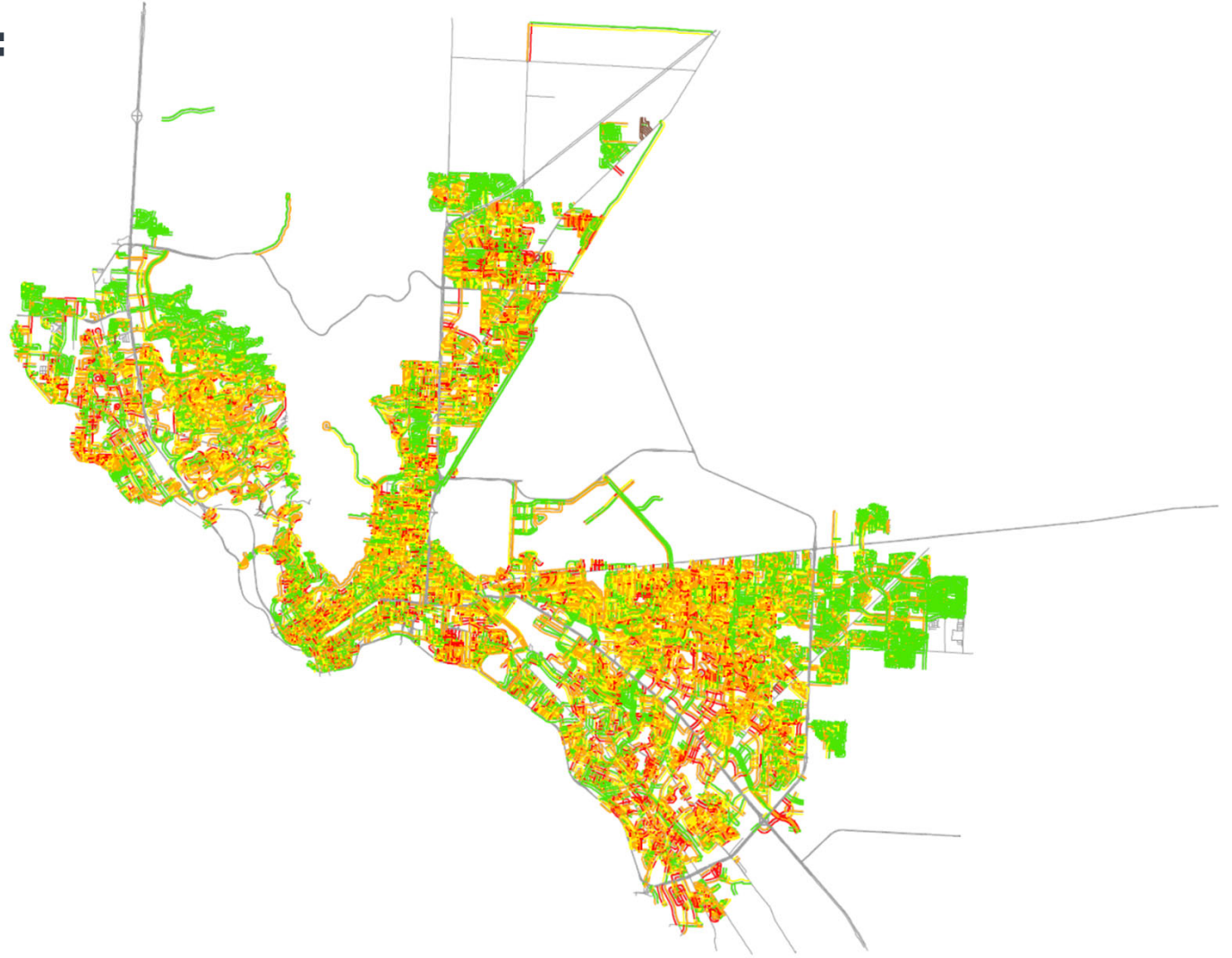
- Type in an address to search or freely navigate
- See PCI city-wide by adjacent parcel
- Average PCI at 70 or above should be our goal
- <https://storymaps.arcgis.com/stories/dd6e2e3f4615447793e47a4f2cbfc575>

**2008 PCI =  
75.54 avg.**



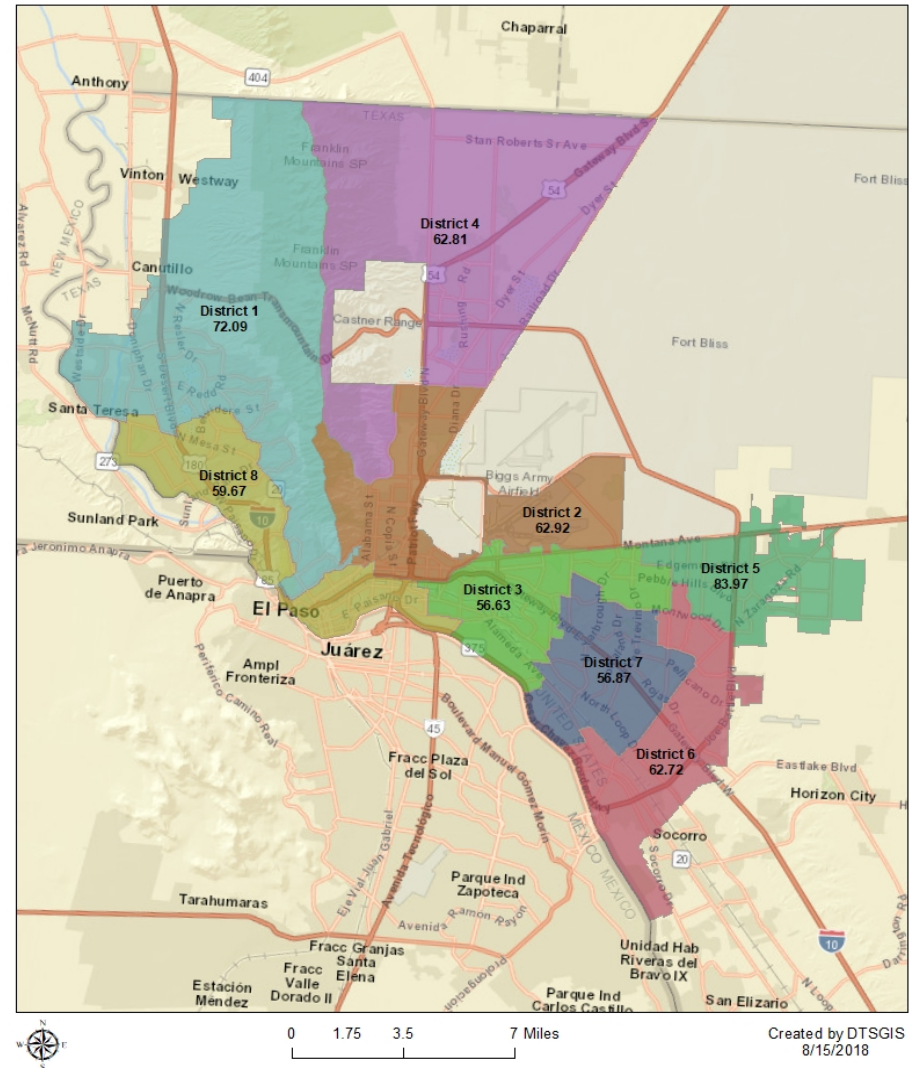
**2018 PCI =  
65.42 avg.**

**PCI**

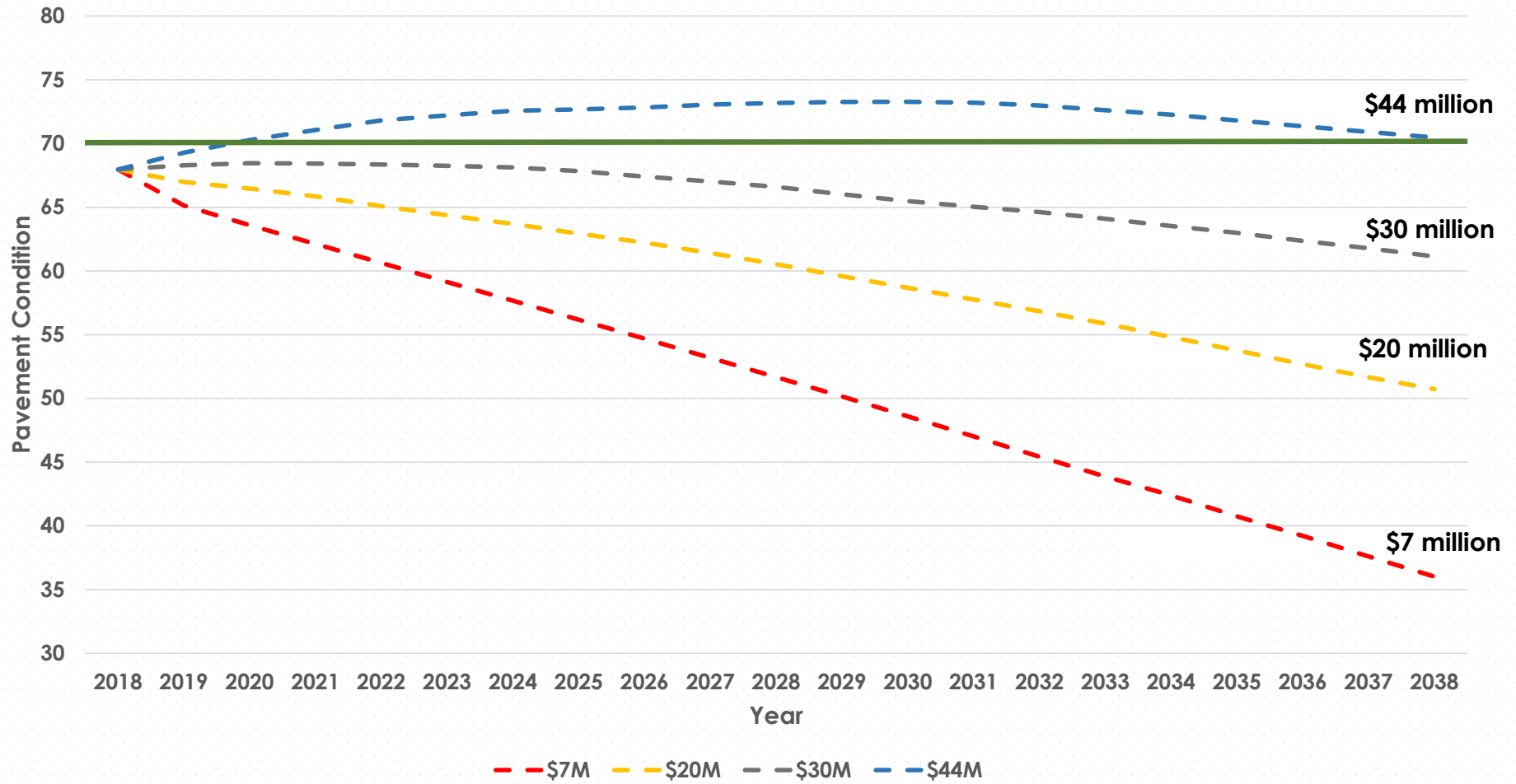


## Average PCI by District

District	Average PCI
1	72.09
2	62.92
3	56.63
4	62.81
5	83.97
6	62.72
7	56.87
8	59.67



Scenarios with 2% inflation



# Alternative Surface Treatment Tools

CID and SAM staff are reviewing alternative programs for street surface treatments such as Slurry Sealing, Pressure Sealing, and HA5

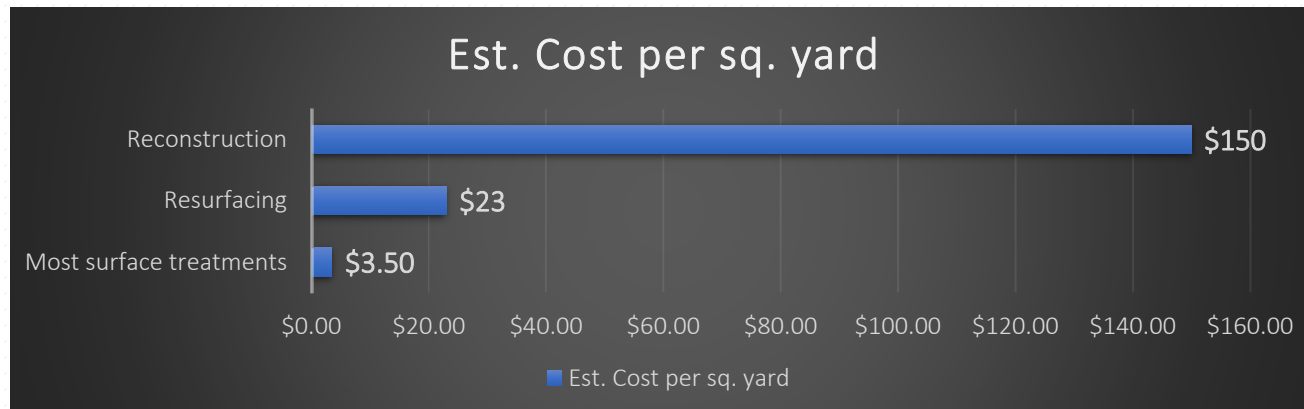
- These treatments are used to preserve the surfaces of **newer** roadways that are still in a **Good** PCI rating
- Example – For a standard residential street you can expect a 25 year useful life – meaning at the 25 year point the street will require either resurfacing or reconstruction, depending on surface and sub-surface deterioration.
- When an alternative surface treatment is applied, it effectively restores the pavement condition back to PCI back ranges of 90-100; this effectively **buys** additional useful life for a street and can push back the need for resurfacing into the future up to seven years



# Alternative Surface Treatment Tools

CID and SAM staff are reviewing alternative programs for street surface treatments such as Slurry Sealing, Pressure Sealing, and HA5 (Cont'd)

- Comparison on Costs:
  - surface treatments are estimated at \$3.50/SQYD; compared to resurfacing which is presently at \$23/SQYD and reconstruction which is estimated at least \$150/SQYD
- In present day dollars, if a surface treatment were applied to a 100 mile stretch of residential roadway it would cost approximately \$6.5 million
- But if done, it would push back the need to spend up to \$41.3 million to resurface that same portion by as many as seven years



# 2012 Street CIP





- June 26, 2012: City Council approved \$218.4 M for street improvements

#### Little initial progress in implementation

- Between 2012 to 2016, only one project completed
- Only \$52 M spent between 2013-2016 (4 years)

- March 8, 2016: City Council CIP recalibration
  - ✓ Observations and input from public
  - ✓ Dedicated funding for specific street improvements
  - ✓ Greater Council oversight of CIP implementation
- August 7, 2017: Council approved expediting arterial resurfacing (Transferred \$21.8 M from Reconstruction to Resurfacing Top 25 Arterials)
- December 18, 2017 Council approved expediting reconstruction projects
- Pre-COVID, on schedule to complete by 2021

# History

- June 26, 2012: City Council approved \$218.4 M for street improvements
- March 8, 2016: City Council CIP recalibration
  - Observations and input from public
  - Dedicated funding for specific street improvements
  - Greater Council oversight of CIP implementation
- August 7, 2017: Council approved expediting arterial resurfacing (Transferred \$21.8 M from Reconstruction to Resurfacing Top 25 Arterials)
- December 18, 2017 Council approved expediting reconstruction projects
- February 15, 2021 Council approved to allocate Investment Interest to projects within each Capital Program.

Status	3/2016	12/2017	2/2019	6/2019	10/2019	2/2020	7/2020	8/2020	9/2020	12/2020	1/2020	4/2021	6/2021
Completed	2	10	18	21	21	27	35	35	37	39	42	47	49
Construction	6	7	25	27	34	36	24	24	22	20	17	16 + 1NTMP	15
Design	10	27	22	17	10	2	0	0	0	0	0	2	1
Programmed	47	21	0	0	0	0	0	0	0	0	0	0	0
Deferred	0	0	0	0	0	0	6+1 NTMP	6+1 NTMP	6+1 NTMP	6+1 NTMP	6+1 NTMP	0	0
<b>TOTAL</b>	<b>65</b>	<b>65</b>	<b>65</b>	<b>65</b>	<b>65</b>	<b>65</b>	<b>65</b>	<b>65</b>	<b>65</b>	<b>65</b>	<b>65</b>	<b>65</b>	<b>65</b>

Recalibration

Expedite 21 Projects

# Street CIP Resurfacing Update – City wide

## Active Street Resurfacing Projects:

1. 2012 Street CIP for Street Resurfacing – **99.1% complete**  
All remaining streets under contract
2. Arterial Resurfacing Program – **95 % complete**  
Pending completion of Hawkins from I-10 to gazelle

## Progress on Active Street Resurfacing Projects:

- 2012 CO's - **371** Streets Completed – **3** locations in progress or programmed (To be completed within 2021)
- Arterial Program - **7** completed and **1** in progress

# Street CIP Resurfacing– City wide

## \$7 M Residential

### FY 19 and 20 Program :

- 39% Residential streets complete
- Residential Program - **41** streets completed – **63 Locations to be programmed**
- FY 2020 Programmed to FY 2022/23
- FY 2021- FY 2022 Programmed to FY 2023 / FY 2024 / FY 2025

All remaining streets FY 2019 and FY 2020 to be programmed

## \$3 M Collectors Fee

- FY 2020 – 100% Complete
- FY 21 – 23: **2** Roads Complete, **1** In progress, **5** Programmed (On Schedule)

# 2012 Street CIP Resurfacing



# District 1 - Includes 2012 Street CIP; and Arterial Program

## 44 Completed

Location	From	To	Status	Program	Location	From	To	Status	Program
ALTACUMBRE	Camino Fuente	Tarascas	Completed	2012 CO's	MESA HILLS	Mesa	Acacia	Completed	2012 CO's
AMPOSTA	Cresta Alta	Westwind	Completed	2012 CO's	MESITA	Peidmont	Stanton	Completed	2012 CO's
BOX ELDER	Gomez	Rollins	Completed	2012 CO's	MOORE	Piedmont	Stockwell	Completed	2012 CO's
BRENTWOOD	Stanton	Krupp	Completed	2012 CO's	NAVARIE	Pinar del Rio	Redd	Completed	2012 CO's
BUTTERFIELD	Territory	Rio Mira	Completed	2012 CO's	NEW YORK	St. Vrain	Dead End	Completed	2012 CO's
CALLE OLASO	Equestre	Dead End	Completed	2012 CO's	OCTAVIA	Kerbey CDS	Magoffin	Completed	2012 CO's
CHERRY HILL	Broadmoor	Thunderbird	Completed	2012 CO's	ONEIDA	Medano	Redd	Completed	2012 CO's
CINCINNATI	Kansas	Piedmont	Completed	2012 CO's	OSAPLE	Rio Mira	Dead End	Completed	2012 CO's
CLAYTON	Galloway	Robinson	Completed	2012 CO's	PAWNEE	Iroquis	Dead End	Completed	2012 CO's
COSTA BLANCA	Pinar del Rio	Redd	Completed	2012 CO's	PEBBLE BEACH	Shadow Mountain	Burning Tree	Completed	2012 CO's
DEDE	Rim	Cul-de-Sac	Completed	2012 CO's	RHAELYNNE	Cory	Upper Valley	Completed	2012 CO's
FLAMINGO	Krupp	Stanton	Completed	2012 CO's	RIO MIRA	Butterfield	Territory	Completed	2012 CO's
GALLOWAY	Stanton	Piedmont	Completed	2012 CO's	ROXANNA	Ridge	Marietta	Completed	2012 CO's
HILLCREST	Bancroft	Dead End	Completed	2012 CO's	SAN MATEO	La Cruz	Peidmont	Completed	2012 CO's
INDIAN BLUFF	Crown Point	Caprock	Completed	2012 CO's	SANTA RITA	Las Vegas	Okeefe	Completed	2012 CO's
IRONDALE	Lawndale	Stanton	Completed	2012 CO's	SINGING HILLS	Thunderbird	Thunderbird	Completed	2012 CO's
KELLY	Kern	Whitaker	Completed	2012 CO's	SOLEDAD	Mulberry	La Mirada	Completed	2012 CO's
KRUPP	Waymore	Ridgecrest	Completed	2012 CO's	TERRITORY	Butterfield	Rio Mira	Completed	2012 CO's
LA CRUZ	Okeefe	Piedmont	Completed	2012 CO's	WALLINGTON	Krupp	Brentwood	Completed	2012 CO's
LARCHMONT	Krupp	Waymore	Completed	2012 CO's	WELLESLEY	Kern	Campbell	Completed	2012 CO's
LOS NIETOS	La Mirada	La Mirada	Completed	2012 CO's	PARK HILL	Ridgecrest	Ridgecrest	Completed	2012 CO's
MADELINE	Piedmont	Park	Completed	2012 CO's	RESLER	High Ridge	White Cliffs	Completed	Arterials

\*Resler is an arterial program street –section of this is in District 8

# District 2 - Includes 2012 Street CIP; and Arterial Program

## 64 Completed

Location	From	To	Status	Program	Location	From	To	Status	Program
ALLEY	Piedras	Raynor	Completed	2012 CO's	MAXWELL	Dyer	Diana	Completed	2012 CO's
BERYL	Dolomite	Echo	Completed	2012 CO's	MCGREGOR	Maxwell	Diana	Completed	2012 CO's
BRITTON	Dyer	Sierra Vista	Completed	2012 CO's	MEMPHIS	Stevens	Belmont CDS	Completed	2012 CO's
BROADDUS	Alabama	Stevens	Completed	2012 CO's	MEMPHIS	Red Rock Canyon	Piedras	Completed	2012 CO's
BYRON	Van Buren	Monroe	Completed	2012 CO's	MOBILE	Piedras	Dead End	Completed	2012 CO's
CAPITAN	Mt Latona	Hercules	Completed	2012 CO's	MOBILE	Radford	Dead End	Completed	2012 CO's
CHELSEA	Timberwolf	Trowbridge	Completed	2012 CO's	MOUNT DELANO	Hondo Pass	Blue Ridge	Completed	2012 CO's
CLIFTON	Hueco	Gateway South	Completed	2012 CO's	MOUNT ETNA	Rutherford	Glacier Peak	Completed	2012 CO's
CROSSON	CDS	CDS	Completed	2012 CO's	MOUNT HAGEN	Pikes Peak	Blue Ridge	Completed	2012 CO's
CUMBERLAND	Pershing	Gateway South	Completed	2012 CO's	MOUNT OLYMPUS	Joe Herrera	Glacier Peak	Completed	2012 CO's
DEVORE	Eclipse	Comet	Completed	2012 CO's	MOUNT SAN BERDU	Joe Herrera	Alps	Completed	2012 CO's
DIAMOND	Westline	Echo	Completed	2012 CO's	MOUNT WHITNEY	Tetons	Knox	Completed	2012 CO's
DOLOMITE	Magnetic	Zircon	Completed	2012 CO's	NASHVILLE	Piedras	Dead End	Completed	2012 CO's
ECHO	Hercules	Moonlight	Completed	2012 CO's	NEBRASKA	Nations	Morehead	Completed	2012 CO's
ELM	Mobile	Richmond	Completed	2012 CO's	OLYMPIC	Magnetic	Gateway South	Completed	2012 CO's
FORREST	Hunt	Trowbridge	Completed	2012 CO's	PEINADO	Wagner	Hunt	Completed	2012 CO's
FRANKFORT	Stevens	Bossworth CDS	Completed	2012 CO's	POLK	Byron	Elm	Completed	2012 CO's
GRANT	Piedras	Copper	Completed	2012 CO's	POLLARD	Jefferson	Gateway South	Completed	2012 CO's
GRISSOM	Martin	Mathias	Completed	2012 CO's	RAILROAD	Loop 375	US 54	Completed	2012 CO's
HAPPER	Leeds	Cambridge	Completed	2012 CO's	ROBERT	Maxwell	Arlen	Completed	2012 CO's
HASTINGS	Happer	Gateway South	Completed	2012 CO's	SATURN	Edgar Park	Hercules	Completed	2012 CO's
HOMER	Gateway South	Joyce	Completed	2012 CO's	SHEPPARD	Alabama	Lackland	Completed	2012 CO's
HUNT	Peinado	Glenwood	Completed	2012 CO's	SOLAR	Edgar Park	Hercules	Completed	2012 CO's
JADE	Zircon	Echo	Completed	2012 CO's	STATLER	Tetons	Adolphus	Completed	2012 CO's
JUSTUS	Jefferson	Tyler	Completed	2012 CO's	STEVENS	Harrison	McKinley	Completed	2012 CO's
LACKLAND	Van Buren	Monroe	Completed	2012 CO's	STRAND	McGregor	Maxwell	Completed	2012 CO's
LAMAR	Bliss	Hueco	Completed	2012 CO's	TAYLOR	Piedras	Terminus	Completed	2012 CO's
LOUISIANA	Mobile	Richmond	Completed	2012 CO's	TRADEWIND	Mercury	Neptune	Completed	2012 CO's
MADERA	Radford	Dead End	Completed	2012 CO's	VEGA	Polaris	Comet	Completed	2012 CO's
MARR	Altura	Trowbridge	Completed	2012 CO's	WAGNER	Chelsea	Trowbridge	Completed	2012 CO's
MATTERHORN	Rutherford	Glacier Peak	Completed	2012 CO's	WEIGHTMAN	Timberwolf	Edwards	Completed	2012 CO's
MAXWELL	Gateway North	Dyer	Completed	2012 CO's	WILSON	Pershing	Dead End	Completed	2012 CO's

*\*Sections of Mount Etna, Mount Olympus, Matterhorn, and Mount San Berdu cross into District 4*

*\*Railroad is an arterial program street-section crosses into District 4*

*\*Hastings completed in two segments; shown here as originally programmed*

# District 3 - Includes 2012 Street CIP; and Arterial Program

## 64 Completed, 1 In Progress

Location	From	To	Status	Program	Location	From	To	Status	Program
ABRAHAM	Alameda	Canary	Completed	2012 CO's	JOSHUA	Durrill	Dead End	Completed	2012 CO's
ALASKA	Yuma	Phoenix	Completed	2012 CO's	KAYWOOD	Parkwood	Saigon	Completed	2012 CO's
ALGONQUIN	Geronimo	Marlow	Completed	2012 CO's	LARRY MAHAN	Gateway West	Viscount	Completed	2012 CO's
ANISE	Lee Trevino	Montwood	Completed	2012 CO's	LEAR	Boeing	Lockheed	Completed	2012 CO's
AQUARIUS	Turrentine	Backus	Completed	2012 CO's	LETTIE	Ben Swain	Edith	Completed	2012 CO's
ARAPAHO	Geronimo	Marlow	Completed	2012 CO's	MCCARTHY	Hockney	Alameda	Completed	2012 CO's
ASH	Dempsey	W H Burges	Completed	2012 CO's	MERIL	Cardigan	Darin	Completed	2012 CO's
AVALON	Sunglow	Dead End	Completed	2012 CO's	MIDWAY	Knights	Hockney	Completed	2012 CO's
BALSAM	Barker	Mimosa	Completed	2012 CO's	MONTROSE	Mc Crae	Dead End	Completed	2012 CO's
BRANDWOOD	Blackwood	Suewood	Completed	2012 CO's	NAVAJO	Apache	Cheyenne Trail	Completed	2012 CO's
CESSNA	Sunglow	W H Burges	Completed	2012 CO's	PAPAGO	Clark	Marlow	Completed	2012 CO's
CHIP CHIP	Alameda	Dead End	Completed	2012 CO's	PEACH TREE	George Orr	C R Croom	Completed	2012 CO's
CIBOLA	Clark	Marlow	Completed	2012 CO's	PEAR TREE	George Orr	C R Croom	Completed	2012 CO's
CLEVELAND	Paisano	Marlow	Completed	2012 CO's	PEARL	Amethyst	Dead End	Completed	2012 CO's
COCONUT TREE	Granite	Coconut Tree	Completed	2012 CO's	PRESTWICK	Cosmos	Kilmaltie	Completed	2012 CO's
CORNWALL	Castletown	Blackwood	Completed	2012 CO's	RED ROBIN	Canary	George Orr	Completed	2012 CO's
DERICK	Carnegie	Montana	Completed	2012 CO's	SHELL	Montana	Dead End	Completed	2012 CO's
DOWNUM	McCabe	Darlina	Completed	2012 CO's	SHETLAND	Edgemere	Ballymote	Completed	2012 CO's
EAST GLEN	Pebble Hills	Sam Snead	Completed	2012 CO's	STEPHENSON	Gateway East	Frederick	Completed	2012 CO's
EDITH	Little Flower	Ben Swain	Completed	2012 CO's	SURETY	Gateway East	Clark	Completed	2012 CO's
FIRESTONE	Montana	Darin	Completed	2012 CO's	TRINITY	Rusk	Simpia	Completed	2012 CO's
FLINT	Polo Inn	Polo Inn	Completed	2012 CO's	TURRENTINE	Glengarry	Daugherty	Completed	2012 CO's
FRANK BEARD	Sam Snead	Anise	Completed	2012 CO's	UTE	Clark	Marlow	Completed	2012 CO's
GOURD	Album	Bellis	Completed	2012 CO's	VIOLET	W H Burges	Cessna	Completed	2012 CO's
GRANITE	George Orr	Polo Inn	Completed	2012 CO's	VOCATIONAL	Mimosa	Alameda	Completed	2012 CO's
GREEN VALLEY	Carolina	Dead End	Completed	2012 CO's	WADE	Cosmos	Lait	Completed	2012 CO's
HARDY	Tampa	Dulaney	Completed	2012 CO's	WOODALL	Blackwood	Suewood	Completed	2012 CO's
HAWAII	Yuma	Phoenix	Completed	2012 CO's	BEN SWAIN	Toni	Edith	Completed	2012 CO's
HAWICK	Dunoon	Mcintosh	Completed	2012 CO's	GEORGE DIETER	Montana	Montwood	Completed	Arterials
HILLER	Airport	Boeing	Completed	2012 CO's	VISCOUNT	Airway	Hawkins	Completed	Arterials
HOLIDAY	Tampa	Welch	Completed	2012 CO's	YARBROUGH	Montana	Cesar Chaves	Completed	Arterials
INTERNATIONAL	Robert E Lee	Airway	Completed	2012 CO's	HAWKINS	Merchant/Gazelle	North Loop/Gateway	On Hold Montana RTS	Arterials
J C CRAMER	Barker	Coronado	Completed	2012 CO's					

\*George Dieter is an arterial program street –section crosses into District 5

\*Yarbrough is an arterial program street –section crosses into District 7



# District 4 - Includes 2012 Street CIP; and Arterial Program

## 83 Completed

Location	From	To	Status	Program	Location	From	To	Status	Program
ABILENE	Cermac	Shenandoah	Completed	2012 CO's	PARADISE	Alcan	Tropicana	Completed	2012 CO's
AJAX	Crenshaw	Tropicana	Completed	2012 CO's	PEACOCK	Rushing	Saxon	Completed	2012 CO's
ALCAN	Warren	Fairbanks	Completed	2012 CO's	PERSIMMON	Marie Tobin	Hondo Pass	Completed	2012 CO's
BLYTHE	Yellowstone	Winthrop	Completed	2012 CO's	PICKEREL	Marlin	McCombs	Completed	2012 CO's
BOBCAT	Bomarc	Dead End	Completed	2012 CO's	PONDEROSA	Palomino	Dead End	Completed	2012 CO's
CRENSHAW	Yellowstone	Tropicana	Completed	2012 CO's	PORT ARTHUR	Sweetwater	Murphy	Completed	2012 CO's
CURLEW	Debeers	Tropicana	Completed	2012 CO's	POTOMAC	Pheasant	Quail	Completed	2012 CO's
DALTON	Salisbury	Raleigh	Completed	2012 CO's	RAVEN	Bomarc	Dead End	Completed	2012 CO's
DEARBORNE	Mackinaw	McCombs	Completed	2012 CO's	RAYMOND TELLES	Alps	Joe Herrera	Completed	2012 CO's
DEBEERS	Ambassador	Mackinaw	Completed	2012 CO's	REGULUS	Mc Combs	Bomarc	Completed	2012 CO's
DECATUR	Vicksburg	Railroad	Completed	2012 CO's	ROANOKE	Joe Herrera	Hondo Pass	Completed	2012 CO's
DEER	McCombs	Cross	Completed	2012 CO's	RUTHERFORD	Stahala	Dyer	Completed	2012 CO's
DOWNNS	Fairfax	Raleigh	Completed	2012 CO's	SAGITTARIUS	Rushing	Kenworthy	Completed	2012 CO's
DUVAL	Marie Tobin	Hondo Pass	Completed	2012 CO's	SALEM	Rushing	McCombs	Completed	2012 CO's
FAIRFAX	Threadgill	Dalton	Completed	2012 CO's	SANDERS	Pistacio	Dyer	Completed	2012 CO's
FALCON	Mc Combs	Railroad	Completed	2012 CO's	SARAH ANNE	McCombs	Terminus	Completed	2012 CO's
FERTELL	Sun Valley	Grouse	Completed	2012 CO's	SHENANDOAH	Thor	Debeers	Completed	2012 CO's
GRAND CANYON	Zion	Old Spanish	Completed	2012 CO's	SIGMA	Sagittarius	Dead End	Completed	2012 CO's
GULFPORT	Salisbury	Raleigh	Completed	2012 CO's	SINCLAIR	Tivoli	Terminus	Completed	2012 CO's
HOLLINGS	Wren	Hondo Pass	Completed	2012 CO's	THOR	Crenshaw	Winthrop	Completed	2012 CO's
HUECO VISTA	Alabama	Dead End	Completed	2012 CO's	THREADGILL	Dyer	McCombs	Completed	2012 CO's
JOHN CUNNINGHAM	MLK	Terminus	Completed	2012 CO's	TIGER EYE	Dyer	Jadestone	Completed	2012 CO's
JUNCTION	Kellogg	Gateway South	Completed	2012 CO's	TIVOLI	Deer	Quail	Completed	2012 CO's
KELLOGG	Winthrop	Tropicana	Completed	2012 CO's	TRIUMPH	Salem	Dearborne	Completed	2012 CO's
KETCHIKAN	Prince Edwar	Newcastle	Completed	2012 CO's	TROPICANA	Alcan	McCombs	Completed	2012 CO's
KISKA	Prince Edwar	Edmonton	Completed	2012 CO's	TROUT	Wolverine	Dead End	Completed	2012 CO's
LEVELLAND	Sweetwater	Port Arthur	Completed	2012 CO's	UVALDE	Sun Valley	Junction	Completed	2012 CO's
LLANO	Hueco Vista	Terminus	Completed	2012 CO's	VANGUARD	Pickere!	Dead End	Completed	2012 CO's
MACAW	McCombs	Blue Wing	Completed	2012 CO's	VERBENA	Threadgill	McCombs	Completed	2012 CO's
MACKEREL	Will Ruth	Dead End	Completed	2012 CO's	VICEROY	Dearborne	Dead End	Completed	2012 CO's
MATTERHORN	Rutherford	Glacier Peak	Completed	2012 CO's	VICKSBURG	Threadgill	Sanders	Completed	2012 CO's
MAUREEN	Stahala	Gabriel	Completed	2012 CO's	WALDORF	McCombs	Alcan	Completed	2012 CO's
MC COMBS SERVICE	Sarah Anne	Sun Valley	Completed	2012 CO's	WINTHROP	Kenworthy	Thor	Completed	2012 CO's
MENZIES	Winthrop	Sun Valley	Completed	2012 CO's	WOODBERRY	Mc Combs	Dead End	Completed	2012 CO's
MIDDLESBORO	Waverly	McCombs	Completed	2012 CO's	WOODCHUCK	Bomarc	Dead End	Completed	2012 CO's
MOUNT ETNA	Rutherford	Glacier Peak	Completed	2012 CO's	YELLOWSTONE	Tropicana	Blythe	Completed	2012 CO's
MOUNT OLYMPUS	Joe Herrera	Glacier Peak	Completed	2012 CO's	YOSEMITE	Zion	Old Spanish Tra	Completed	2012 CO's
MOUNT SAN BERDU	Joe Herrera	Alps	Completed	2012 CO's	ZEUS	Nike	Snark	Completed	2012 CO's
MURPHY	Salem	Sean Haggerty	Completed	2012 CO's	ZION	Alabama	Gran Quivera	Completed	2012 CO's
NIKE	Sidewinder	Dead End	Completed	2012 CO's	MCCOMBS	Dyer	Railroad	Completed	Arterials
OLAN	Fairfax	Roanoak	Completed	2012 CO's	RAILROAD	Loop 375	US 54	Completed	Arterials
OLD SPANISH TRAIL	Zion	Dead End	Completed	2012 CO's					

\*Sections of Mount Etna, Mount Olympus, Matterhorn, and Mount San Berdu cross into District 2  
 \*Railroad is an arterial program street-section crosses into District 2

## District 5 - Includes 2012 Street CIP; and Arterial Program

### 2 Completed

Location	From	To	Status	Program
LEE	Montwood	Pebble Hills	Completed	2012 CO's
GEORGE DIETER	Montana	Montwood	Completed	Arterials

*\*George Dieter is an arterial program street --section crosses into District 3*

# District 6 - Includes 2012 Street CIP; and Arterial Program

## 10 Completed

Location	From	To	Status	Program
PULLMAN D	Henry Brennan	Rojas	Completed	2012 CO's
DORSET	Coventry	Dead End	Completed	2012 CO's
ONATE	Candelaria	Dead End	Completed	2012 CO's
SANTA ROSALIA	Southside	Guadalajara	Completed	2012 CO's
RENO	Southside	Guadalajara	Completed	2012 CO's
NEVAREZ A	Inglewood	Skylight	Completed	2012 CO's
GOLONDRINA	Buena Park	Buena Park	Completed	2012 CO's
GUADALAJARA	Singh	Reno	Completed	2012 CO's
LONE STAR	Socorro	Padilla	Completed	2012 CO's
ROJAS	George Dieter	Don Haskins	Completed	Arterials

*\*Sections of Rojas is an Arterial Program street – section crosses into District 7*

# District 7 - Includes 2012 Street CIP; and Arterial Program

## 63 Completed

Location	From	To	Status	Program	Location	From	To	Status	Program
ALCAZAR	Lomaland	Dead End	Completed	2012 CO's	LEE TREVINO	Gateway East	Yermoland	Completed	2012 CO's
ALGERITA	Riverside	Hickory	Completed	2012 CO's	LILAC	Carolina	Montecito	Completed	2012 CO's
ALGIERS	Fir	Album	Completed	2012 CO's	LOMALAND	Pellicano	Gateway East	Completed	2012 CO's
ALLEN BRADLEY	James Watt	Wilkinson	Completed	2012 CO's	MAZATLAN	Hunter	Ladera	Completed	2012 CO's
AMUR	Danube	Arboleda	Completed	2012 CO's	MONACO	Montwood	Woodside	Completed	2012 CO's
ARAQUAIA	Arboleda	Dead End	Completed	2012 CO's	MONTERREY	Giles	Yarbrough	Completed	2012 CO's
ATKINSON	North Loop	Half Moon	Completed	2012 CO's	NEW HAVEN	Lasso	Roseway	Completed	2012 CO's
BORRETT	Wells	Dead End	Completed	2012 CO's	NEWLAND	Stanley	Atwood	Completed	2012 CO's
BURGESS	Yermoland	Courtland	Completed	2012 CO's	POLVO	Ron Quillo	Dead End	Completed	2012 CO's
BURNHAM	Stanley	Lomaland	Completed	2012 CO's	RALPHEENE	Williamette	Yermoland	Completed	2012 CO's
CAPELLO	Blacks	McCamey	Completed	2012 CO's	RIO ARRIBA	Pedernales	Link	Completed	2012 CO's
CHRISTY	Williamette	Yermoland	Completed	2012 CO's	ROJAS	Pendale	George Dieter	Completed	2012 CO's
CORK	Album	Zanzibar	Completed	2012 CO's	ROSEMARY	San Jose	Wenda	Completed	2012 CO's
COSMOS	McRae	Debbie	Completed	2012 CO's	SAN PAULO	La Paz	Yarbrough	Completed	2012 CO's
DALE DOUGLAS	Bob Mitchell	Vista del Sol	Completed	2012 CO's	SANTA BARBARA	Mazatlan	Hacienda	Completed	2012 CO's
EMERSON	Heid	North Loop	Completed	2012 CO's	SANTA MARIA	Giles	Dead End	Completed	2012 CO's
ESCADRILLE	Fray	Lafayette	Completed	2012 CO's	SANTA MONICA	Giles	Venado	Completed	2012 CO's
FINITA	Whittier	Alameda	Completed	2012 CO's	SONORA	Veracruz	Dead End	Completed	2012 CO's
FRANCINE	Williamette	Yermoland	Completed	2012 CO's	SUMATRA	Ceylon	Album	Completed	2012 CO's
FRAY	Williamette	Dead End	Completed	2012 CO's	TAHITI	Heather	Bermuda	Completed	2012 CO's
GALLAGHER	Heid	Mauer	Completed	2012 CO's	TOMWOOD	Sumac	Trawood	Completed	2012 CO's
GUAYMAS	Taxco	Corozal	Completed	2012 CO's	TRANQUILO	Yarbrough	Dead End	Completed	2012 CO's
HACIENDA	Hunter	Ameca	Completed	2012 CO's	VAN HASELEN	Lasso	Pendale	Completed	2012 CO's
HALF MOON	North Loop	North Loop	Completed	2012 CO's	VENADO	Ranchland CDS	San Paulo	Completed	2012 CO's
HAROLD	Starr	Dead End	Completed	2012 CO's	VERACRUZ	Ladera	Giles	Completed	2012 CO's
HERMOSILLO	Hunter	Yarbrough	Completed	2012 CO's	VISTA LOMAS	Vista De Oro	Vista del Sol	Completed	2012 CO's
HONOLULU	Montwood	Leewood	Completed	2012 CO's	VISTA REAL	Trawood	Janway	Completed	2012 CO's
INDEPENDENCE	Yarbrough	Whittier	Completed	2012 CO's	WENDA	Franklin	San Jose	Completed	2012 CO's
LA GENTE	Morelia	Dead End	Completed	2012 CO's	YARBROUGH	North Loop	Alameda	Completed	2012 CO's
LA PALOMA	Valley View	Valley View	Completed	2012 CO's	ROJAS	George Dieter	Don Haskins	Completed	Arterials
LA PAZ	Corozal	Dead End	Completed	2012 CO's	YARBROUGH	Montana	Cesar Chaves	Completed	Arterials
LADERA	Monterrey	Carolina	Completed	2012 CO's					

\*Sections of Rojas is an Arterial Program street – section crosses into District 6

\*Yarbrough is an arterial program street –section crosses into District 3

# District 8 - Includes 2012 Street CIP; and Arterial Program

## 57 Completed, 2 In Progress

Location	From	To	Status	Program	Location	From	To	Status	Program
AVILA	Lombardy	Avila	Completed	2012 CO's	KINGSWOOD	Silverbell	Dead End	Completed	2012 CO's
BALLERINA	Sunset	Dead End	Completed	2012 CO's	LAREDO	Boone	Dead End	Completed	2012 CO's
BEL MAR	Fiesta	Cabrillo	Completed	2012 CO's	LESLIE WARD	Boy Scout	Dead End	Completed	2012 CO's
BELTON	Monarch	De Leon	Completed	2012 CO's	LINDEN	Alameda	Dunne	Completed	2012 CO's
BENEDICT	Perth	Hookheath	Completed	2012 CO's	MARDI GRAS	Carousel	Dad End	Completed	2012 CO's
BLACKSTONE	Roxbury	Frontera	Completed	2012 CO's	MARTINEZ	Delta	Laredo	Completed	2012 CO's
BRIARWOOD	Coeur D Alene	Sunset	Completed	2012 CO's	MEADOWLARK	Vist Del Monte	Rosinante	Completed	2012 CO's
CASTILE	Belton	Marcena	Completed	2012 CO's	MONTOYA	Country Club	Medowlark	Completed	2012 CO's
CHARL ANN	Shorty	Sunset	Completed	2012 CO's	OVERLAND	Cotton	Campbell	Completed	2012 CO's
CIRCUS	Mardi Gras	Dead End	Completed	2012 CO's	PACIFIC	Hidden	Doniphan	Completed	2012 CO's
COEUR D ALENE	Olmos	Coeur D Alene	Completed	2012 CO's	PALO VERDE	Maguey	Rio Flor	Completed	2012 CO's
COLINA ALTA	Fountain	Dead End	Completed	2012 CO's	PERTH	Riverbend	Benedict	Completed	2012 CO's
COLUMBINE	Country Club	Camino Real	Completed	2012 CO's	POPLAR	Pershing	Missouri	Completed	2012 CO's
COMANCHE	Tobin	Cortez	Completed	2012 CO's	POPLAR	Grant	School gates	Completed	2012 CO's
CORTO	Yandell	Prospect	Completed	2012 CO's	ROSEWOOD	Arizona	Missouri	Completed	2012 CO's
CORVENA	Swan	Fair Lawn	Completed	2012 CO's	RUBIN	Suncrest	Corousel	Completed	2012 CO's
DALLAS	San Antonio	Dead End	Completed	2012 CO's	SAINT VRAIN	Olive	Dead End	Completed	2012 CO's
DETROIT	Murchison	Arizona	Completed	2012 CO's	SANTA FE	I-10	Main	Completed	2012 CO's
DOLAN	Paisano	Sagrado	Completed	2012 CO's	SILVERBELL	Kingswood	Dead End	Completed	2012 CO's
DUNNE	Washington	Dead End	Completed	2012 CO's	THRUSH	Warbler	Crane	Completed	2012 CO's
EIGHTH	Oregon	Ochoa	Completed	2012 CO's	VISTA GRANDE	Country Club	Country Club	Completed	2012 CO's
FINDLEY	San Antonio	Dead End	Completed	2012 CO's	WESTCITY	Eubank	Waymore	Completed	2012 CO's
FOUNTAIN	Snow Heights	Mesa	Completed	2012 CO's	WESTVIEW	Heath	Belton	Completed	2012 CO's
FOURTH	Park	Coles	Completed	2012 CO's	BIRCH	Grant	Wyoming	Completed	2012 CO's
FRANCIS	Flower	Terminus	Completed	2012 CO's	CALIFORNIA	Mesa	Los Angeles	Completed	2012 CO's
FRANKLIN	I-10	Durango	Completed	2012 CO's	NINTH	Park	Campbell	Completed	2012 CO's
GEORGIA	Cliff	Dead End	Completed	2012 CO's	RIVER BEND	Frontera	Sunset	Pending CID Project	2012 CO's
HEISIG	Prospect	Sun Bowl	Completed	2012 CO's	UPSON	Heisig	Stewart	Pending PSB Project	2012 CO's
HOOKHEATH	Roxbury	Benedict	Completed	2012 CO's	RESLER	High Ridge	White Cliffs	Completed	Arterials
J C MACHUCA	Sunland Park	Dead End	Completed	2012 CO's					

\*Resler is an arterial program street –section of this is in District 1

# 2012 Street CIP Reconstruction



## Active Reconstruction Project Progress

**65 TOTAL PROJECTS (+3 NTMP)**

- **49 COMPLETED**
- **15 Bid/ Construction (+1 NTMP)**
- **1 Design**
  
- **2 NTMP Complete**

**\*Status numbers does not include the 45 unfunded projects**



# 1 Projects in Pre-Design / Design

Project	District	Estimate	Est. Construction Start
Phillippy Reconstruction	6	\$797,632	TBD

# 5 + 1 NTMP Projects in Bidding

Project	District	Estimate	Est. construction Start
Canterbury Trail	1	\$1,302,300	Fall 2021
Gene Torres NTMP	7	\$798,600	Summer / Fall 2021
Padilla Reconstruction	6	\$2,249,005	Summer 2021
South Central Phase 5 - Edna(East of Concepcion), Cortez (South of Delta) Reconstruction (2)	8	\$6,224,221	Summer 2021
Sunglow Landscaping	3	\$388,351	Summer 2021



# 10 Under Construction

Project	District	Estimate	Estimated Completion
Davis Reconstruction	6	\$1,851,322	All scheduled to be complete by summer 2021
Lowd Reconstruction	7	\$1,944,000	
MCA Quiet Zones	3,8	\$6,162,048	
McCune Reconstruction	7	\$2,821,000	
Paddlefoot and Lomaland Reconstruction	7	\$5,234,000	
River Bend Phase III	8	\$3,340,200	
South Central Phase IV (Edna west of Concepcion, Dolan) 2	8	\$3,930,215	
Viscount Boulevard Roadway Lighting and Median Landscape	3	\$3,053,700	

# 49 + 2 NTMP Completed Projects

Alicia Drive Reconstruction	John Hayes Arterial Lighting	RC Poe and Edgemere Roundabout
Annie Reconstruction	Kernel Reconstruction	Redd Road Median Landscape and Lighting
Barker Reconstruction	Little Flower Reconstruction	Rich Beem Street Lighting
Central at Paisano	Love Rd Property Acquisition	Rim at Hague Intersection Improvements
Cielo Vista Sidewalk Repair	Manor Reconstruction	Robinson Reconstruction Phase I
Deer Ave NTMP	Mauer Road NTMP	Robinson Reconstruction Phase II
Edgemere Parkway	Mesquite Hills Street Lighting	Snelson Reconstruction
Edgemere Trail Widening, Lighting and Landscape Improvements	Mimosa Reconstruction	South Central Phase 2 - Encino(North of Delta), De Vargas, Cortez(North of Delta) Reconstruction (3)
Ethel Reconstruction	Monroe 2-way conversion	South Central Phase 3 - Encino (South of Delta), Elena, Feliz Reconstruction (2)
Flower Reconstruction	Montoya Heights Sidewalk	Springwood Traffic Calming
Geiger, Cardis, Malaga Reconstruction	New Haven Reconstruction	Teramar Reconstruction
Glenwood Reconstruction	Pebble Hills Extension	Toni, Mary Jeanne, Yvonne Reconstruction
Holly Reconstruction	Pendale Reconstruction	University Pedestrian Improvements
Independence Trail and Amenities (2)	Princeton, Tullane, Valleyview Reconstruction (3)	Van Buren 2-way conversion
James Reconstruction	Ramos Reconstruction	Yarbrough North Roadway Lighting and Median Landscape

# Collector Street Resurfacing Program

List presented on 1/7/20 for  
FY 20 (half), 21, 22

List presented on 10/27/20 for  
FY 23



## Collector Roads Paving Needs

- **Collectors are designed to move traffic between residential streets and arterial roadways; there are 160 Collector streets and 188 Arterial streets in our inventory, along with 5,769 Residential streets;**
- **The City through Title 15 collects an additional \$3M from Public Service Board Infrastructure Franchise Fee dedicated to Street Resurfacing:**
  - **\$3M used for a Collector Road resurfacing program**
- **Current program covers FY 20 (half), 21, 22, and 23**
- **Program began in Summer of 2020**

## **Program Candidates for a Collector Paving program for FY 21, FY 22, and FY 23**

- **Project streets selected based on the following:**
  1. **PCI Data** from most recent pavement assessment – PCI's drive the selection criteria
  2. **Utility Clearances** – selected streets will be vetted with utility partners to ensure there are no water, gas, electric line issues that could cause them to be cut into within the next few years
  3. **Completing Neighborhoods** – where possible, candidates were selected near areas where the City has paved in the 2012 CO's, the Arterial Program, and the Residential paving program; selected sections of candidate streets are logical limits within the streets requiring pavement replacement

## Collector Street Projects - In Progress

FY	Dist.	Location	From	To
FY 20	4	Rushing	Fairbanks	Salem
	4	Sun Valley	McCombs	Cross
FY 21	6	Saul Kleinfeld	Gwen Evans	Zaragoza
	3.5	Edgemere	Aberdeen	Red Sails
FY 22	3.5	Edgemere	Red Sails	George Dieter
	1.8	Belvidere	Mesa	Westwind
	2	Copia	Altura	Pershing
	7	Giles	Gateway East	Heid
FY 23	5,6	Saul Kleinfeld	Gwen Evans	Pebble Hills
	3,6,7	Montwood	Lee Trevino	Saul Kleinfeld

**= COMPLETED PROJECTS**

# Rushing

FY 2020

Fairbanks to Salem

**Red-Black** – Proposed collector streets

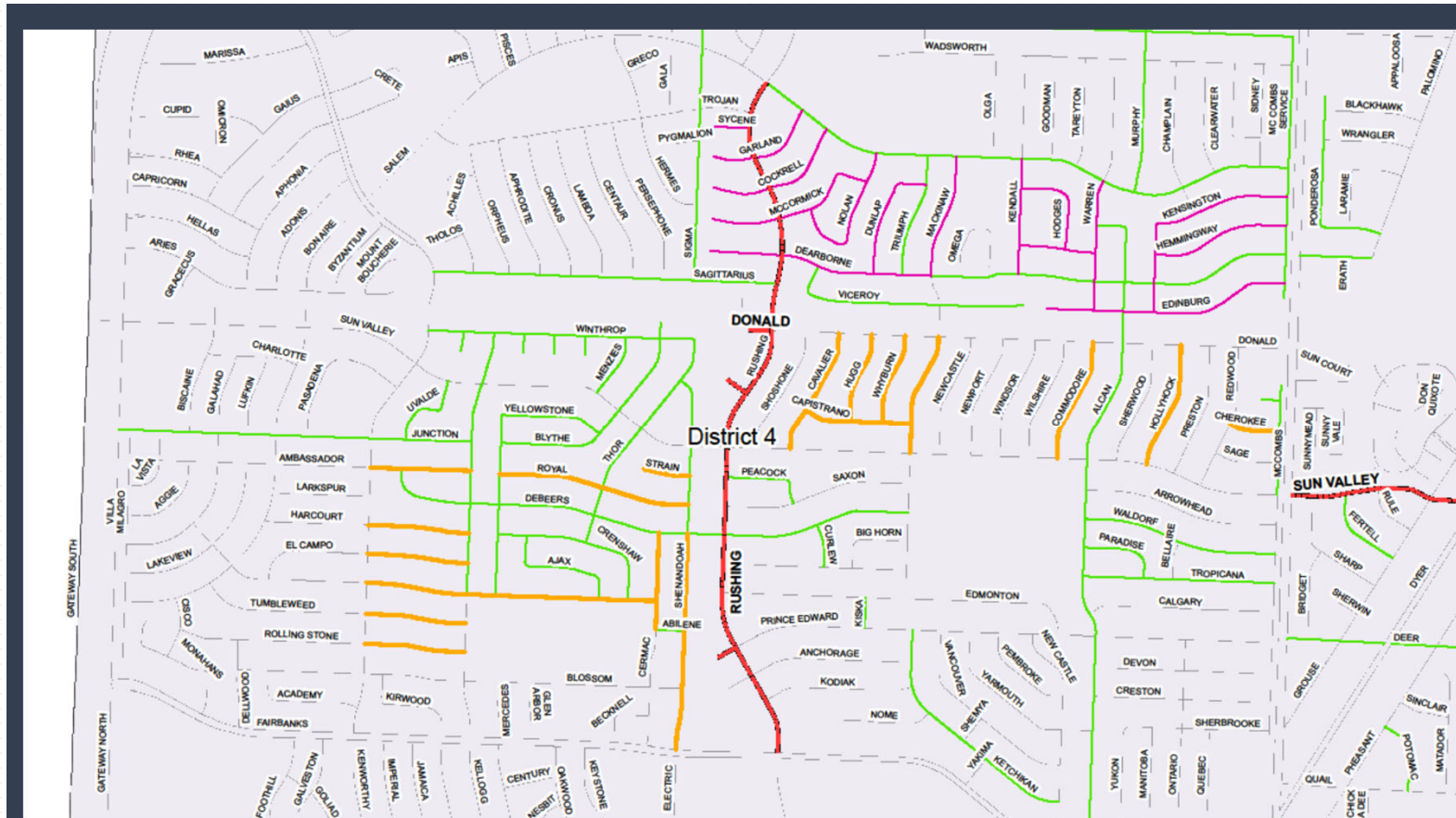
**Magenta** – Proposed residential streets FY21-22

**Orange** – Residential streets from the FY19-20 Program

**Green** – 2012 street CIP

**Red** – Arterial Program

**Blue** – TxDOT



# Sun Valley

FY 2020

## McCombs to Cross

**Red-Black** – Proposed collector streets

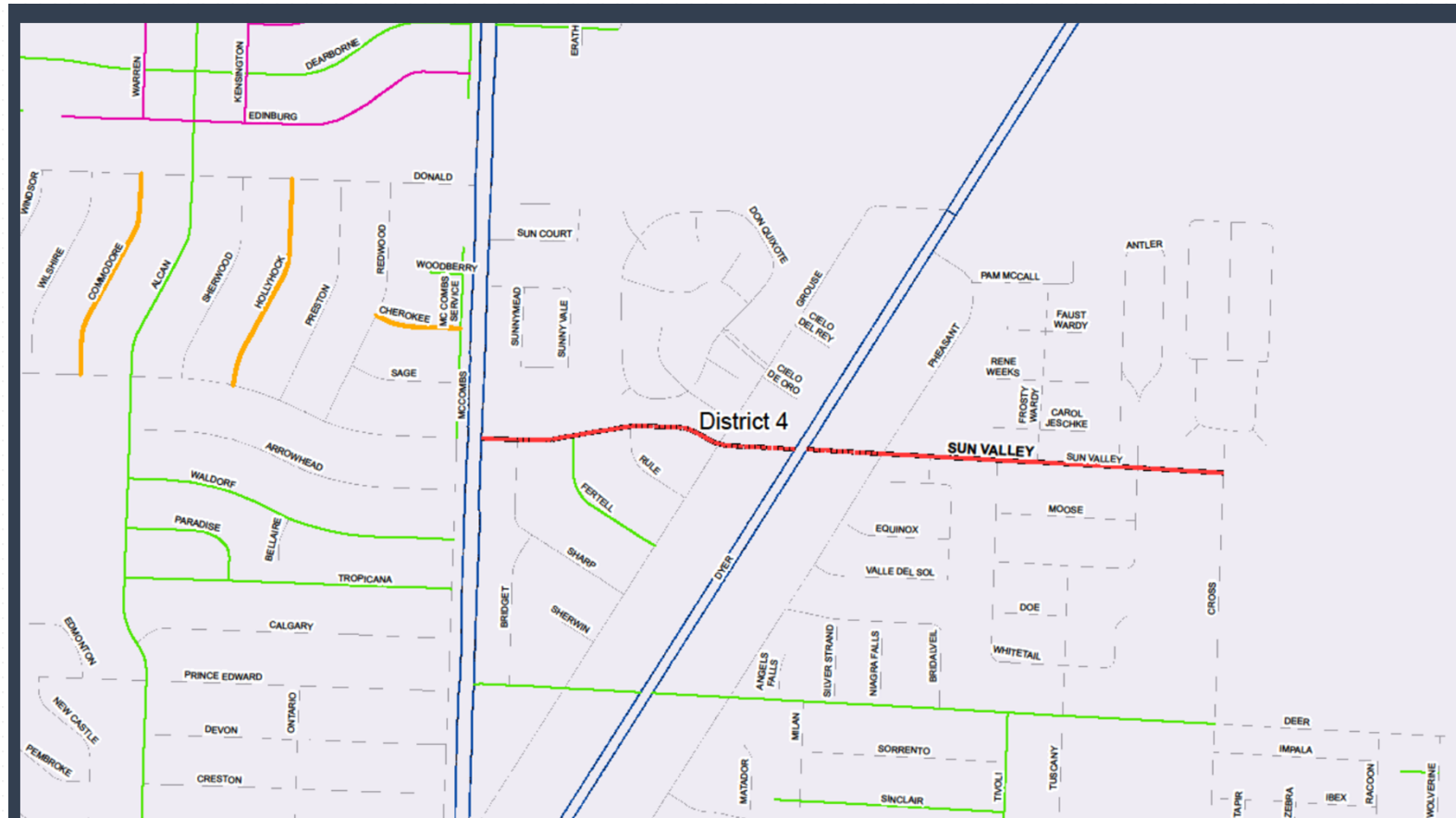
**Magenta** – Proposed residential streets FY21-22

**Orange** – Residential streets from the FY19-20 Program

**Green** – 2012 street CIP

**Red** – Arterial Program

**Blue** – TxDOT



# Completed

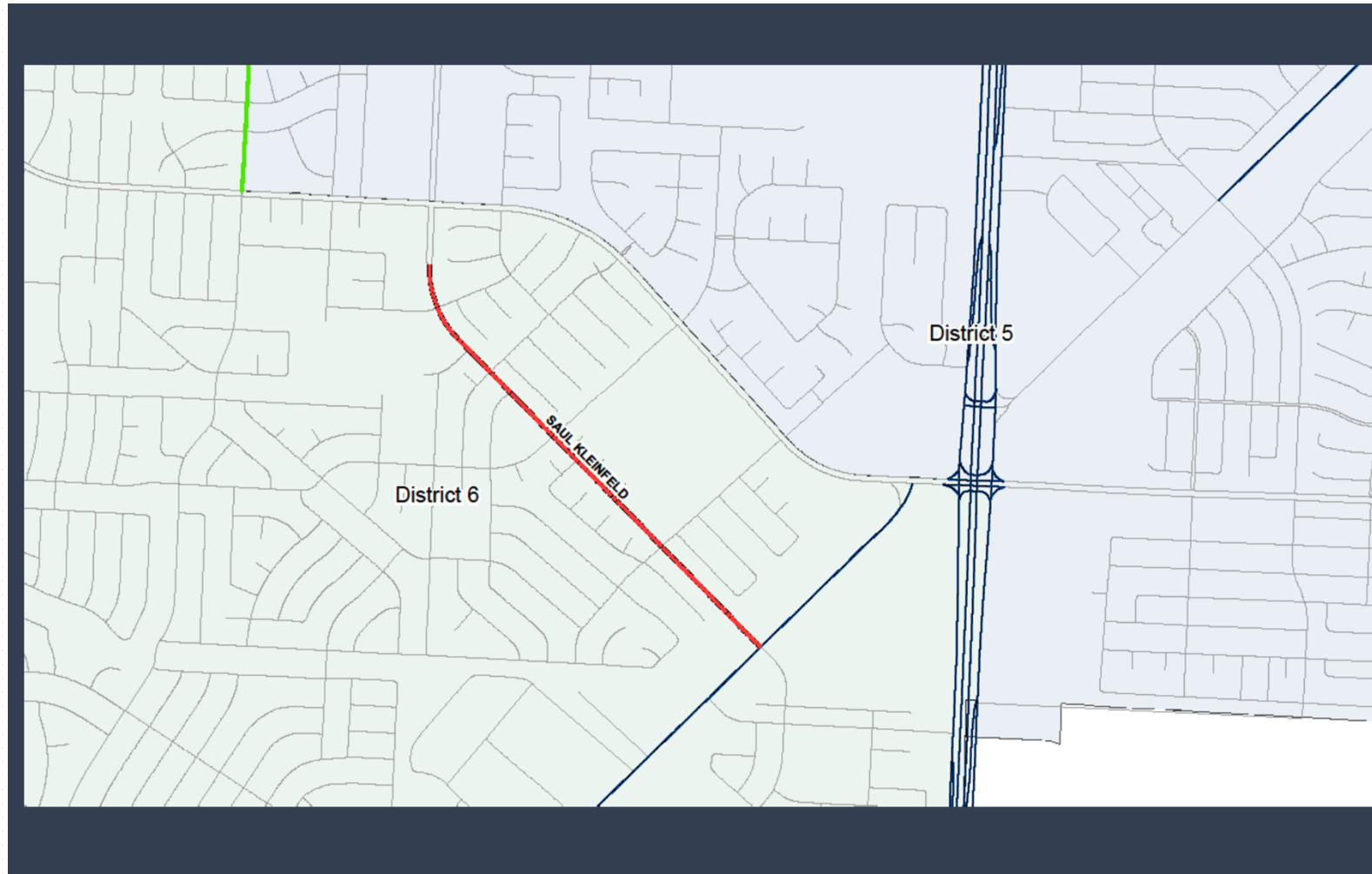


# Saul Kleinfeld

FY 2021

Gwen Evans to  
Zaragoza

- Red-Black** – Proposed collector streets
- Magenta** – Proposed residential streets FY21-22
- Orange** – Residential streets from the FY19-20 Program
- Green** – 2012 street CIP
- Red** – Arterial Program
- Blue** – TxDOT





# Belvidere

FY 2022

## Mesa to Westwind

**Red-Black** – Proposed collector streets

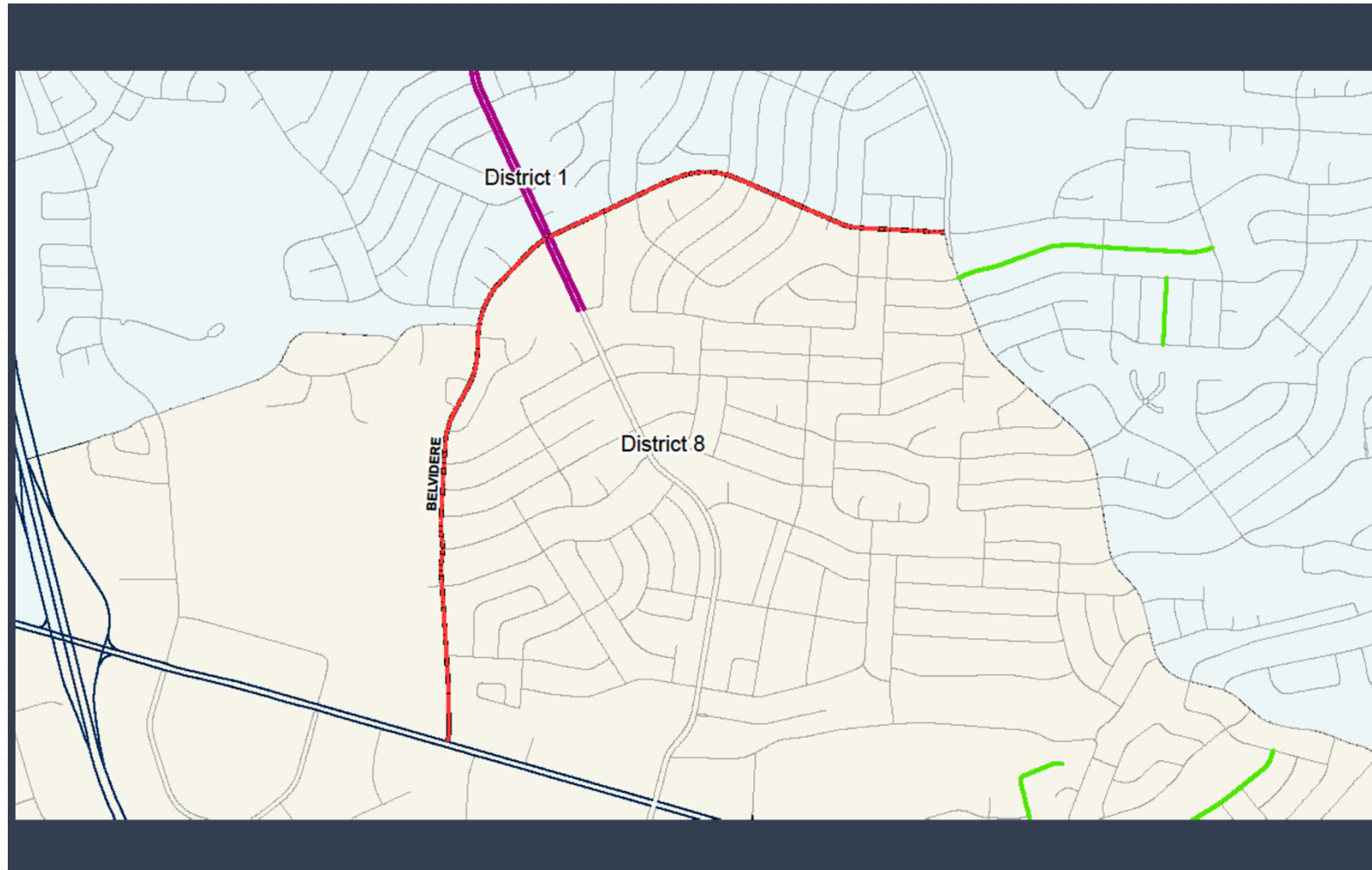
**Magenta** – Proposed residential streets FY21-22

**Orange** – Residential streets from the FY19-20 Program

**Green** – 2012 street CIP

**Red** – Arterial Program

**Blue** – TxDOT



# Copia

## FY 2022

### Altura to Pershing

**Red-Black** – Proposed collector streets

**Magenta** – Proposed residential streets FY21-22

**Orange** – Residential streets from the FY19-20 Program

**Green** – 2012 street CIP

**Red** – Arterial Program

**Blue** – TxDOT

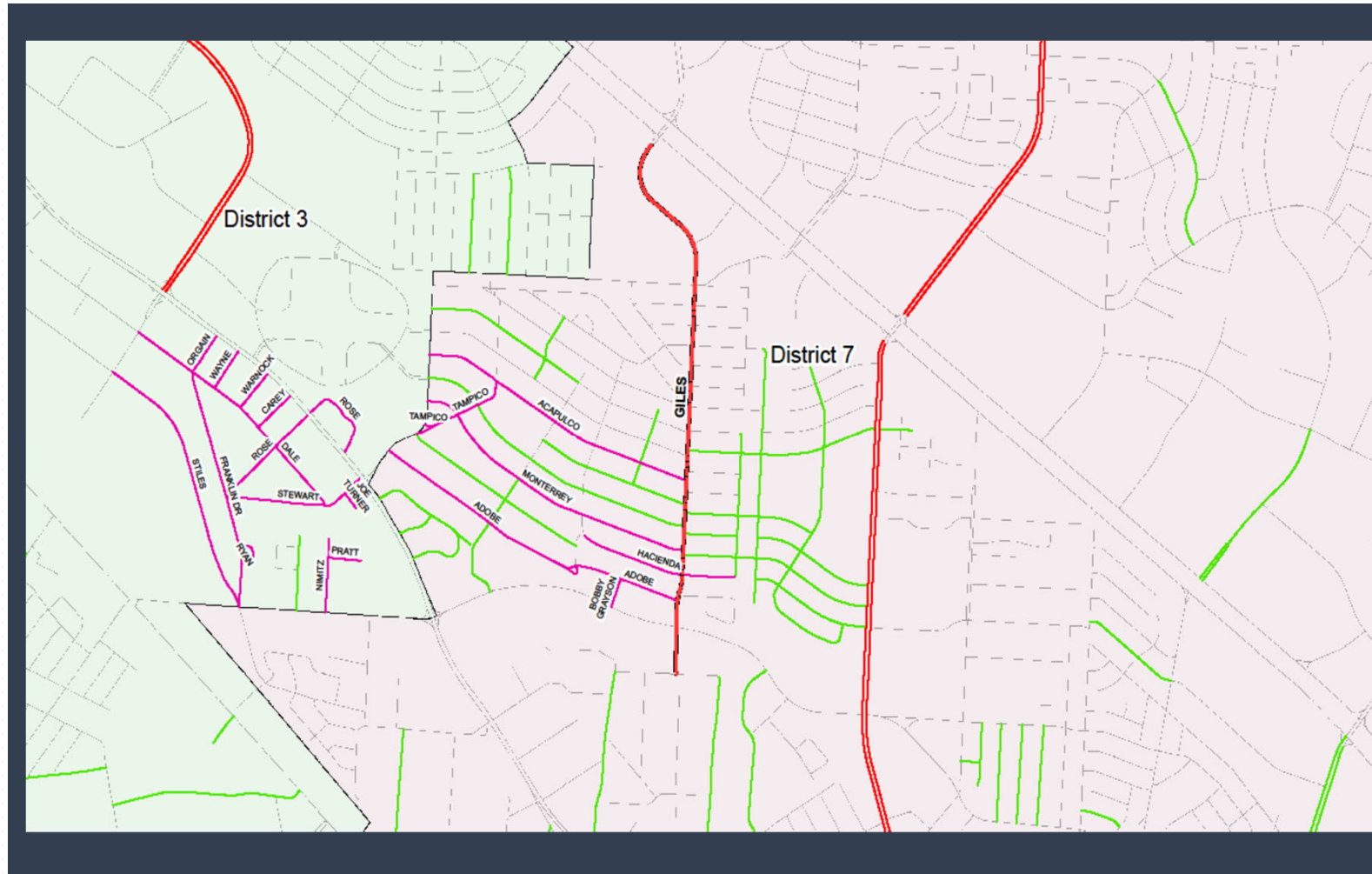


# Giles

## FY 2022

### Gateway East to Heid

- Red-Black** – Proposed collector streets
- Magenta** – Proposed residential streets FY21-22
- Orange** – Residential streets from the FY19-20 Program
- Green** – 2012 street CIP
- Red** – Arterial Program
- Blue** – TxDOT



# Saul Kleinfeld FY 2023

## Gwen Evans to Pebble Hills

**Red-Black** – Proposed collector streets

**Magenta** – Proposed residential streets FY21-22

**Orange** – Residential streets from the FY19-20 Program

**Green** – 2012 street CIP

**Red** – Arterial Program

**Blue** – TxDOT



# Montwood

FY 2023

Lee Trevino to Saul Kleinfeld

**Red-Black** – Proposed collector streets

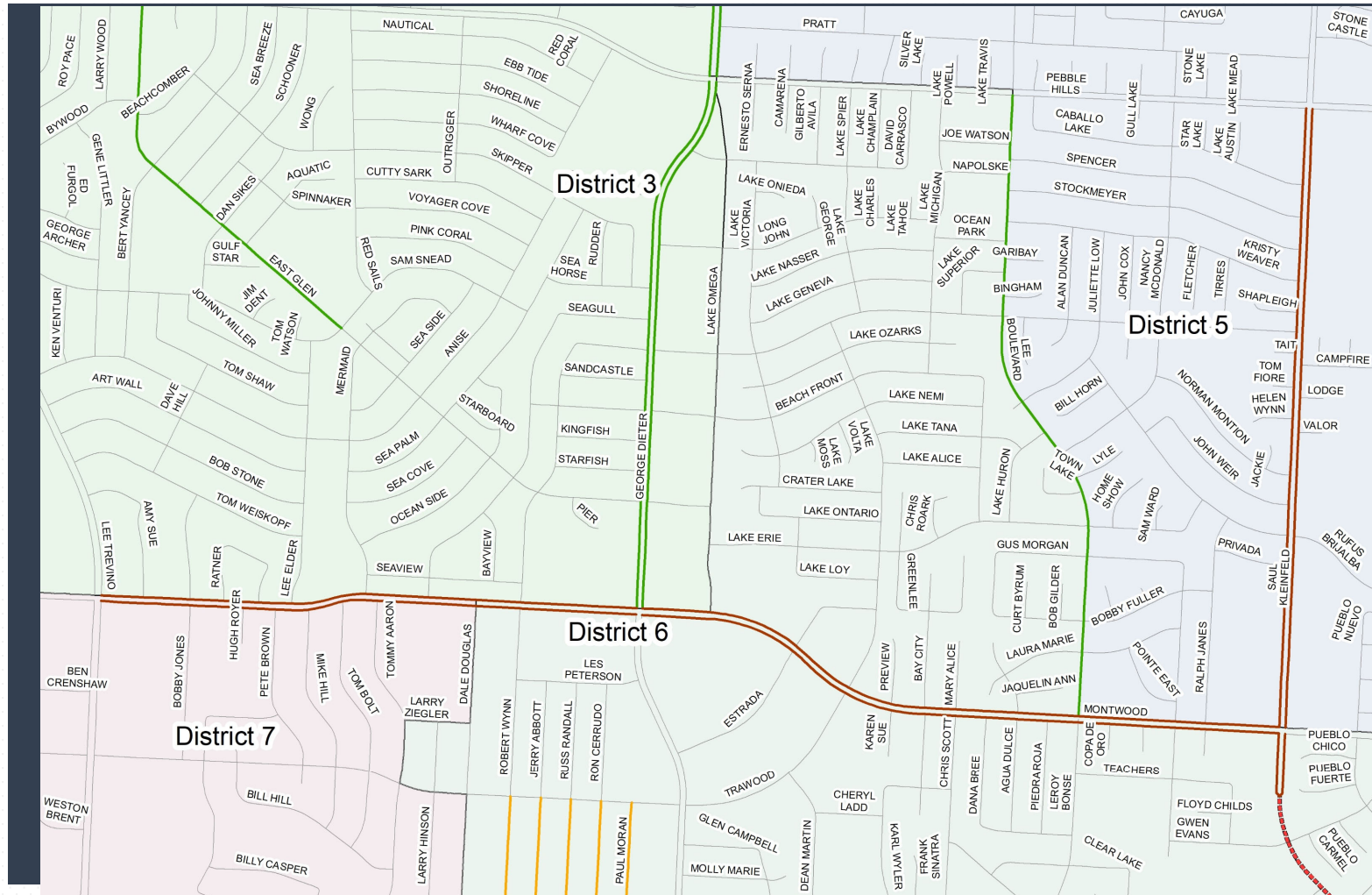
**Magenta** – Proposed residential streets FY21-22

**Orange** – Residential streets from the FY19-20 Program

**Green** – 2012 street CIP

**Red** – Arterial Program

**Blue** – TxDOT



# Residential Street Resurfacing Program \$7 M Dedicated Funding

11-13-18 Approved 2 Year List – FY19/20

**Balance programmed for  
FY 22 and 23**





## FY 19/20 Residential Street Paving Plan – Completed in FY 2019

District	Location	From	To	Status	District	Location	From	To	Status
District 1	BERKSHIRE	Brentwood	Waymore	Completed	District 3	SUFFOLK	Castletown	Ballymote	Completed
District 1	BUCKINGHAM	Canterbury	Stanton	Completed	District 3	TYRONE	Castletown	Ballymote	Completed
District 1	CANTERBURY	Stanton	Santa Rita	Completed	District 4	AMBASSADOR	Kenworthy	Kellogg	Completed
District 1	DARWOOD	Krupp	Waymore	Completed	District 4	CAPISTRANO	Cavalier	Mackinaw	Completed
District 1	DONNYBROOK	Okeefe	CDS	Completed	District 4	CAVALIER	Donald	Sun Valley	Completed
District 1	GREENWICH	Krupp	Berkshire	Completed	District 4	CERMAC	Debeers	Abiline	Completed
District 1	HAMPSHIRE	Wallington	Stanton	Completed	District 4	CHEROKEE	Redwood	Mc Combs	Completed
District 1	OKEEFE	Santa Rita	Bacerac	Completed	District 4	COMMODORE	Donald	Sun Valley	Completed
District 1	RIDGECREST	Canterbury	Park Hill	Completed	District 4	EL CAMPO	Kenworthy	Kellogg	Completed
District 1	STANTON	Canterbury	Okeefe	Completed	District 4	HARCOURT	Kenworthy	Kellogg	Completed
District 1	WAYMORE	Mesa	Stanton	Completed	District 4	HOLLYHOCK	Donald	Sun Valley	Completed
District 3	BALLYMOTE	Orkney	Karen	Completed	District 4	HUGG	Donald	Capistrano	Completed
District 3	BAYO	Orkney	Karen	Completed	District 4	MACKINAW	Donald	Sun Valley	Completed
District 3	BLACKWOOD	Cornwall	Yarbrough	Completed	District 4	ROLLING STONE	Kenworthy	Kellogg	Completed
District 3	CASTLETOWN	Edgemere	Limerick	Completed	District 4	ROYAL	Yellowstone	Shennandoah	Completed
District 3	DRUMOND	Castletown	Ballymote	Completed	District 4	SHENANDOAH	Debeers	Fairbanks	Completed
District 3	LAMPLITER	Ballymote	CDS	Completed	District 4	STRAIN	Shennandoah	CDS	Completed
District 3	LIMERICK	Castletown	Ballymote	Completed	District 4	TROPICANA	Kenworthy	Cermac	Completed
District 3	LORNE	Castletown	Ballymote	Completed	District 4	TUMBLEWEED	Kenworthy	Kellogg	Completed
District 3	LUELLA	Orkney	Karen	Completed	District 4	WHYBURN	Donald	Capistrano	Completed
District 3	SALLYBROOK	Edgemere	Ballymote	Completed					

# 41 Completed

## FY 19/20 Residential Street Paving Plan

Dist.	Location	From	To	District	Location	From	To
2	CORTE DEL SOL	Mobile	CDS	6	GENE SARAZEN	Robert Wynn	George Dieter
2	SAVANNAH	Stevens	Partello	6	JACK CUPIT	Russ Randall	George Dieter
2	NATIONS	Nebraska	Alabama	6	JERRY ABBOTT	Trawood	Bob Mitchell
2	MOREHEAD	Nebraska	Alabama	6	PAUL MORAN	Trawood	Bunky Henry
2	MCKINLEY	Oklahoma	Piedras	6	RON CERRUDO	Trawood	Bunky Henry
2	MOBILE	Copia	CDS	6	TOM ULOZAS	Robert Wynn	George Dieter
2	SACRAMENTO	Copia	Pollard	7	FOREST HAVEN	Borett	Pinewood
5	HICKMAN	Quintana	Edgemere	7	ROSE HAVEN	Borett	Pinewood
5	QUANAH	Quintana	Edgemere	7	DELL HAVEN	Borett	Pinewood
5	WAR ARROW	Quintana	Edgemere	7	CRESTWOOD	Park Haven	Drugan
5	RED HAWK	Spotted Horse	Proud Eagle	7	SAINT MATTHEWS	North Loop	Park Haven
5	RISNER	Quintana	Edgemere	7	PINEWOOD	Park Haven	Reigndeer
5	IVANHOE	Quintana	Edgemere	7	CLIFFORD	Niles	Reindeer
5	WAR FEATHER	Running Deer	Proud Eagle	7	BORRETT	North Loop	Reindeer
5	SPOTTED HORSE	War Feather	Edgemere	7	SAINT MARYS	North Loop	Lasso
5	QUINTANA	Red Sails	Edgemere	8	SAN ANTONIO	Piedras	Copia CDS
6	RUSS RANDALL	Trawood	Bob Mitchell	8	MAGOFFIN	Eucalyptus	Piedras
6	BOB MITCHELL	Robert Wynn	George Dieter	8	PERA	Magoffin	Alameda

**FY 22 Allocation of \$4.8 M (36 Streets)**

## FY 19/20 Residential Street Paving Plan

Dist	Location	From	To	District	Location	From	To
2	JACKSON	Oklahoma	Raynor	7	DRUGAN	Borrett	Moorehead
2	IDALIA	Copia	Pollard	7	MORERAS	Naranjos	Naranjos
2	PORTER	Alabama CDS	Pollard	7	GLEN HAVEN	Borett	Saint Marys
5	PEACEPIPE	Running Deer	CDS	7	LYNN HAVEN	Borett	Saint Marys
5	TENAHA	Hazel Time	George Dieter	7	NARANJOS	Saint Marys	Reindeer
5	PROUD EAGLE	Brekenridge	Quintana	7	MOORELAND	Park Haven	Reindeer
5	RUNNING DEER	Brekenridge	Edgemere	7	REINDEER	Borrett	Naranjos CDS
6	BILLIE MARIE	Gene Sarazen	Robert Wynn	7	PARK HAVEN	Borrett	Naranjos CDS
6	BUNKY HENRY	Russ Randall	George Dieter	8	RIVERA	Gateway North	Boone
6	FRED MARTI	Billie Marie	George Dieter	8	HAMMETT	Frutas	Alameda
6	JAMES GRANT	Robert Wynn	George Dieter	8	BOONE	Alameda	Rivera
6	RANDY PETRI	Billie Marie	George Dieter	8	CENTRAL	Paisano	Piedras
6	ROBERT WYNN	Trawood	George Dieter	8	CYPRESS	Piedras	Paisano
6	STEVE SPRAY	James Grant	Robert Wynn				

**FY 23 amount to be used from allocation : \$3.6 M**  
**27 Streets**

# \$7 M Annual Dedicated Residential Resurfacing Program

List presented to City Council 1/7/20 for FY 2021 and FY 2022

**Programmed FY 23/24  
And FY25**



## Selection Criteria

- Street Maintenance Fee proposed in future FY 23 and FY 24 budgets will include allocations of \$7,000,000 for residential streets (recurring); current street project candidates were selected for the next two project years (23-24)
- PCI data shows a significant need requiring a systemic approach
- Project streets included emphasis on the following:
  1. **PCI Data** from the recent assessment – new PCI's drive the selection criteria
  2. **Utility Clearances** – selected streets were vetted with utility partners to ensure there are no water, gas, electric line issues that could cause them to be cut into within the next few years
    - **Geographic Locations** – where feasible, candidates were selected near areas where the City has paved in the 2012 CO's, the Arterial Program, and the Residential paving program to complete neighborhoods
- Streets identified through PCI were cross-checked against streets requested in the budget process, streets on the unfunded CIP list, and streets included in public initiated service requests

## Programmed Allocations

**FY 23: \$3.4M**

**FY 24: \$7M**

**FY 25: \$3.6M**

Dist	Location	From	To	Dist	Location	From	To
1	BALTIMORE	Florence	Piedmont	3	JOE TURNER	Stewart	CDS
1	CAMPBELL	Wellesly	Kerby	3	NIMITZ	Carolina	CDS
1	CHAPARRAL	Turney	Mesita	3	ORGAIN	Dale	North Loop
1	CHARIOT	Mesita	CDS	3	PRATT	Nimitz	CDS
1	DARWOOD	Waymore	O'Keefe	3	ROSE	Franklin	North Loop
1	FLORENCE	Gregory	Robinson	3	RYAN	Franklin	Franklin
1	HIXSON	Mesita	Alethia Park	3	STEWART	Franklin	North Loop
1	KERN	Mesa	Stanton	3	STILES	Dodge	Carolina
1	MESITA	Mesa	Stanton	3	WARNOCK	Dale	North Loop
1	MISSISSIPPI	Florence	Rowena	3	WAYNE	Dale	North Loop
1	MORROW	Stockwell	Galloway	4	COCKRELL	Salem	CDS
1	NYE	Baltimore	Cincinnati	4	DEARBORNE	Mackinaw	CDS
1	OCHOA	Baltimore	Cincinnati	4	DUNLAP	Triumph	Dearborne
1	STOCKWELL	Moore	Piedmont	4	EDINBURG	McCombs	CDS
1	WHITAKER	Stockwell	Galloway	4	GARLAND	Salem	CDS
2	ATLAS	Alabama	Gateway South	4	HEMMINGWAY	McCombs	Kensington
2	POLK	Russell	Pollard	4	HODGES	Kendall	Norwood
2	TAYLOR	Piedras	Copia	4	KENDALL	Salem	Dearborne
2	TITANIC	Alabama	Gateway South	4	KENSINGTON	McCombs	Edinburg
2	TYLER	Elm	Pollard	4	MACKINAW	Salem	Dearborne
2	VOLCANIC	Alabama	Gateway South	4	MCCORMICK	Nolan	CDS
3	CAREY	Dale	North Loop	4	NOLAN	Salem	McCormick
3	DALE	Dodge	Stewart	4	NORWOOD	Kendall	Warren
3	FRANKLIN DR	Dale	Carolina	4	SYCENE	Rushing	CDS
3	GLARDON	Green Valley	Green Valley	4	WARREN	Salem	Edinburg

## Programmed Allocations

**FY 23: \$3.4M**

**FY 24: \$7M**

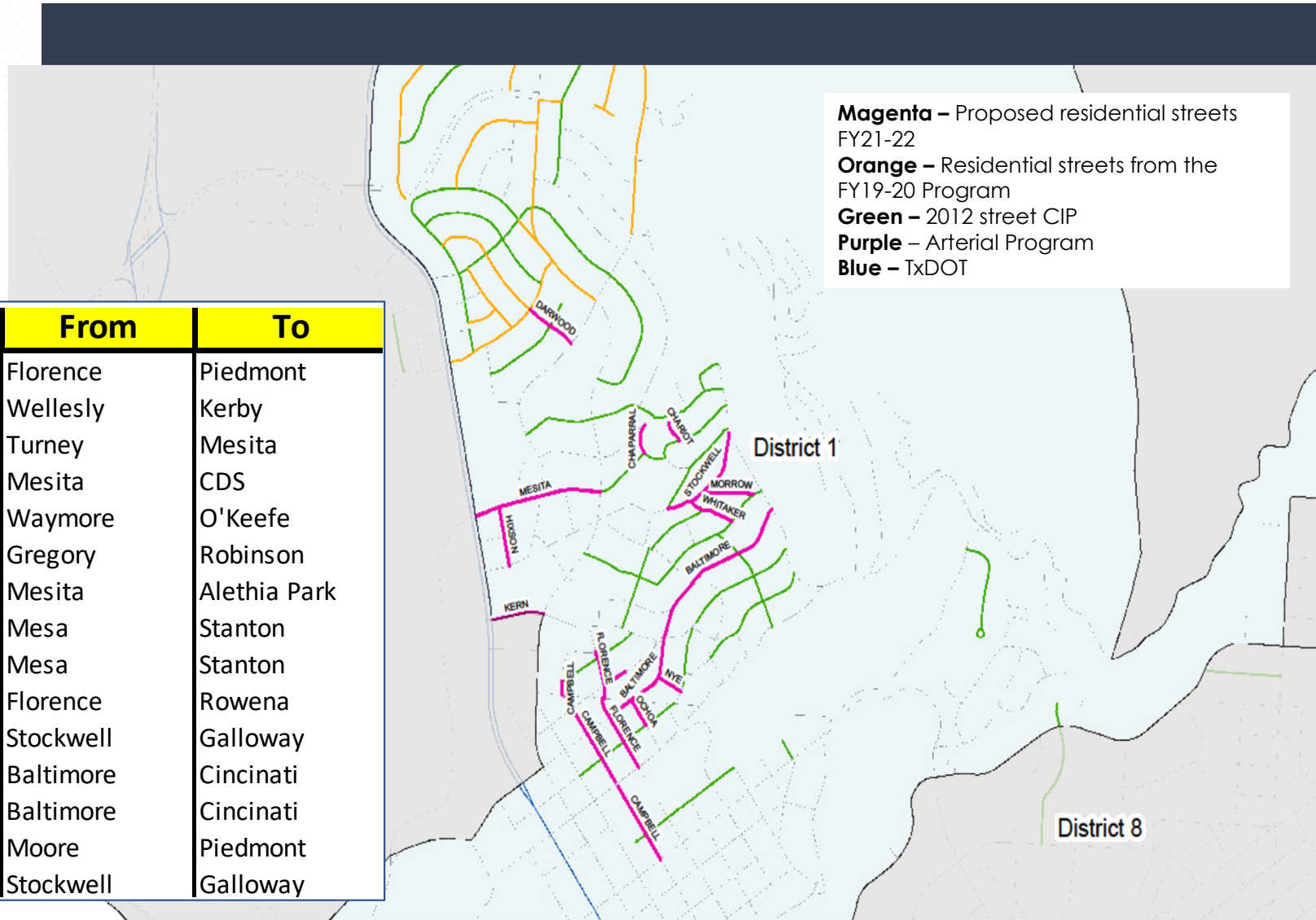
**FY 25: \$3.6M**

Dist	Location	From	To	Dist	Location	From	To
5	BLUE MOON	Rising Sun	CDS	6	MORALES	Juno	CDS
5	BRECKENRIDGE	Red Sails	George Dieter	6	OLD PUEBLO	Zaragoza	Alameda
5	BROKEN ARROW	CDS	CDS	6	PALLA	Hancock	Cana
5	CHICKASAW	Pendleton	Broken Bow	6	PRESA	Roseway	Alameda
5	GHOST DANCE	Pendleton	Pendleton	6	SAINT ANTHONY	Candalaria	Juno
5	KACHINA	CDS	CDS	6	SAN FERNANDO	Candalaria	Juno
5	LONE WOLF	Pendleton	Pendleton	6	SAN PEDRO	Gaspar	CDS
5	PENDLETON	Turner	Edgemere	6	SANDOVAL	Candalaria	San Fernando
5	RED CLOUD	Breckenridge	CDS	6	VALDIVIEZ	Candalaria	Juno
5	RISING STAR	Rising Sun	Pendleton	7	ACAPULCO	Hunter	Giles
5	RISING SUN	Tenaha	Edgemere	7	ADOBE	Hunter	Giles
5	SMOKE SIGNAL	Kachina	CDS	7	BOBBY GRAYSON	Adobe	Carolina
5	SOARING EAGLE	Kachina	CDS	7	CROW	Janway	Septiembre
5	STILL WATER	Broken Arrow	Pendleton	7	HACIENDA	Ameca	Santa Barbara
5	TEKOA	Smoke Signal	CDS	7	MONTERREY	Hunter	Giles
5	TENAHA	Red Sails	Hazel Time	7	OCTUBRE	Crow	Lomaland
5	WOOSTER	Breckenridge	CDS	7	SEPTIEMBRE	Mosswood	Montwood
6	BENITO	Candalaria	CDS	7	TAMPICO	Hunter	Acapulco
6	CANA	Juno	Alameda	7	FRANKLIN	Carolina	East
6	CANANEA	Alameda	CDS	7	LA SENDA	McCune	CDS
6	CANDELARIA	Roseway	Alameda	8	ARIZONA	Ochoa	St Vrain
6	CERES	Hancock	Cana	8	CALIFORNIA	Ochoa	St Vrain
6	COLINA	Alameda	CDS	8	CLIFF	Ochoa	St Vrain
6	COLMENERO	Candalaria	CDS	8	NEVADA	Ochoa	St Vrain
6	GASPAR	Alameda	Socorro	8	OCHOA	Schuster	Wyoming
6	HANCOCK	Juno	Presa	8	RIVER	Ochoa	St Vrain
6	IRMA	Old Pueblo	CDS	8	SAINT VRAIN	Cliff	Missouri
6	JUNO	Cana	Leonardo	8	VIRGINIA	Schuster	Missouri
6	LEONARDO	Juno	Roseway	8	WYOMING	Ochoa	St Vrain
6	LOLITA	Valdiviez	CDS	8	YANDELL	Ochoa	St Vrain

# District 1

Programmed for  
FY 23/24/25

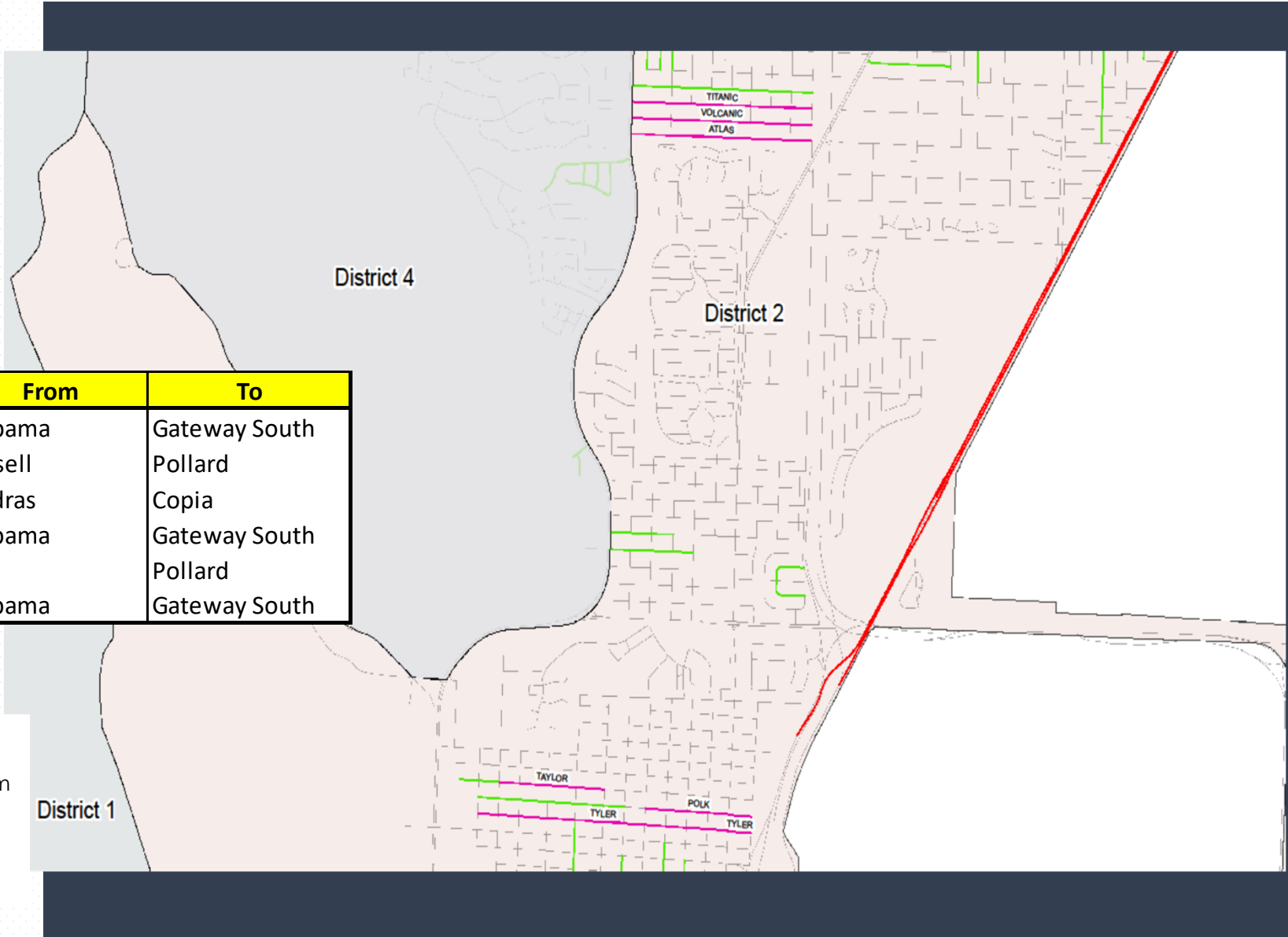
Dist	Location	From	To
1	BALTIMORE	Florence	Piedmont
1	CAMPBELL	Wellesly	Kerby
1	CHAPARRAL	Turney	Mesita
1	CHARIOT	Mesita	CDS
1	DARWOOD	Waymore	O'Keefe
1	FLORENCE	Gregory	Robinson
1	HIXSON	Mesita	Alethia Park
1	KERN	Mesa	Stanton
1	MESITA	Mesa	Stanton
1	MISSISSIPPI	Florence	Rowena
1	MORROW	Stockwell	Galloway
1	NYE	Baltimore	Cincinnati
1	OCHOA	Baltimore	Cincinnati
1	STOCKWELL	Moore	Piedmont
1	WHITAKER	Stockwell	Galloway





# District 2

Programmed for  
FY 23/24/25

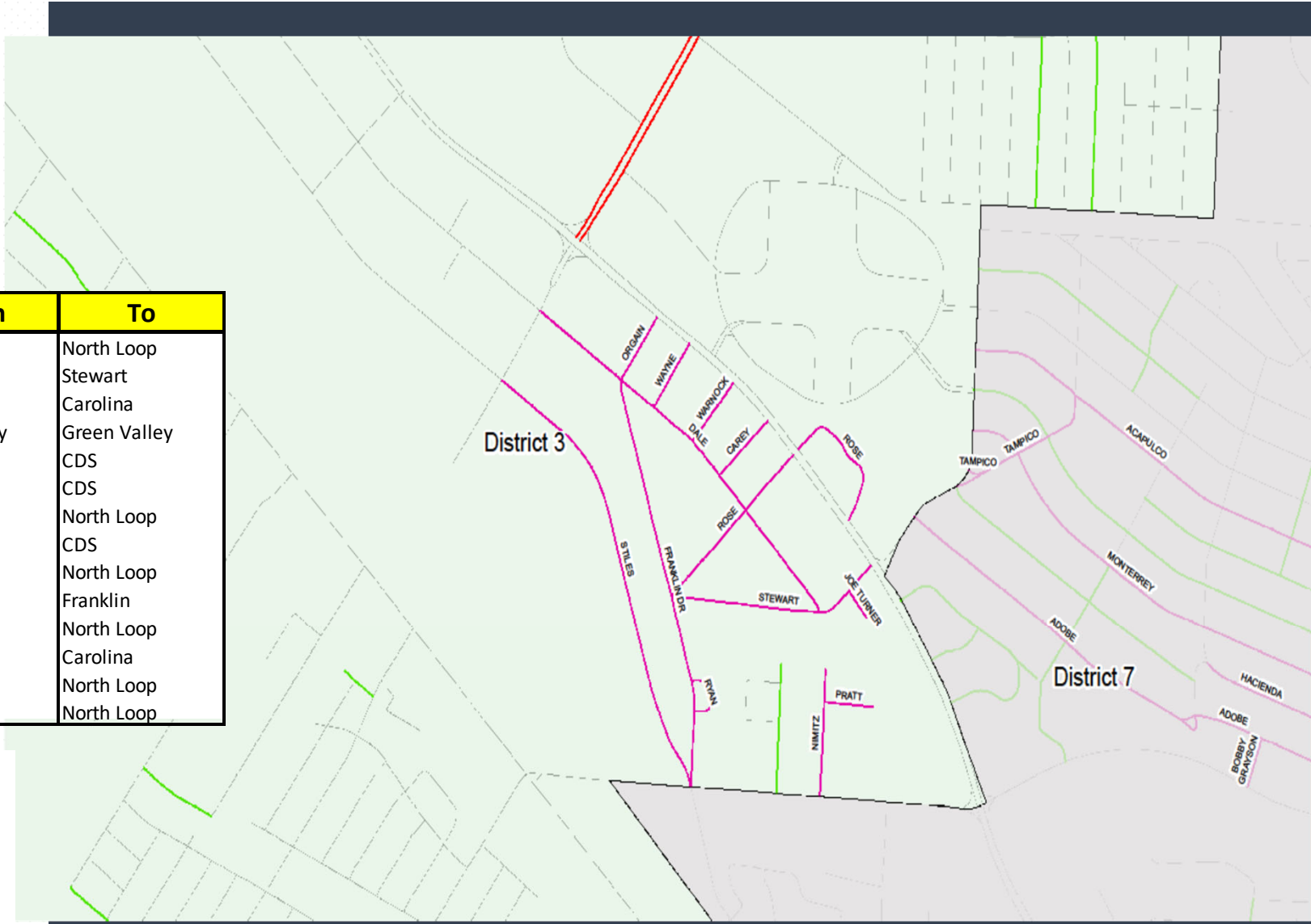


Dist	Location	From	To
2	ATLAS	Alabama	Gateway South
2	POLK	Russell	Pollard
2	TAYLOR	Piedras	Copia
2	TITANIC	Alabama	Gateway South
2	TYLER	Elm	Pollard
2	VOLCANIC	Alabama	Gateway South

- Magenta** – Proposed residential streets FY21-22
- Orange** – Residential streets from the FY19-20 Program
- Green** – 2012 street CIP
- Purple** – Arterial Program
- Blue** – TxDOT

# District 3

Programmed for  
FY 23/24/25



Dist	Location	From	To
3	CAREY	Dale	North Loop
3	DALE	Dodge	Stewart
3	FRANKLIN DR	Dale	Carolina
3	GLARDON	Green Valley	Green Valley
3	JOE TURNER	Stewart	CDS
3	NIMITZ	Carolina	CDS
3	ORGAIN	Dale	North Loop
3	PRATT	Nimitz	CDS
3	ROSE	Franklin	North Loop
3	RYAN	Franklin	Franklin
3	STEWART	Franklin	North Loop
3	STILES	Dodge	Carolina
3	WARNOCK	Dale	North Loop
3	WAYNE	Dale	North Loop

**Magenta** – Proposed residential streets FY21-22  
**Orange** – Residential streets from the FY19-20 Program  
**Green** – 2012 street CIP  
**Purple** – Arterial Program  
**Blue** – TxDOT

# District 4

Programmed for  
FY 23/24/25

Dist	Location	From	To
4	COCKRELL	Salem	CDS
4	DEARBORNE	Mackinaw	CDS
4	DUNLAP	Triumph	Dearborne
4	EDINBURG	McCombs	CDS
4	GARLAND	Salem	CDS
4	HEMMINGWAY	McCombs	Kensington
4	HODGES	Kendall	Norwood
4	KENDALL	Salem	Dearborne
4	KENSINGTON	McCombs	Edinburg
4	MACKINAW	Salem	Dearborne
4	MCCORMICK	Nolan	CDS
4	NOLAN	Salem	McCormick
4	NORWOOD	Kendall	Warren
4	SYCENE	Rushing	CDS
4	WARREN	Salem	Edinburg

**Magenta** – Proposed residential streets  
FY21-22

**Orange** – Residential streets from the  
FY19-20 Program

**Green** – 2012 street CIP

**Purple** – Arterial Program

**Blue** – TxDOT



# District 5

Programmed for  
FY 23/24/25

Dist	Location	From	To
5	BLUE MOON	Rising Sun	CDS
5	BRECKENRIDGE	Red Sails	George Dieter
5	BROKEN ARROW	CDS	CDS
5	CHICKASAW	Pendleton	Broken Bow
5	GHOST DANCE	Pendleton	Pendleton
5	KACHINA	CDS	CDS
5	LONE WOLF	Pendleton	Pendleton
5	PENDLETON	Turner	Edgemere
5	RED CLOUD	Breckenridge	CDS
5	RISING STAR	Rising Sun	Pendleton
5	RISING SUN	Tenaha	Edgemere
5	SMOKE SIGNAL	Kachina	CDS
5	SOARING EAGLE	Kachina	CDS
5	STILL WATER	Broken Arrow	Pendleton
5	TEKOA	Smoke Signal	CDS
5	TENAHA	Red Sails	Hazel Time
5	WOOSTER	Breckenridge	CDS

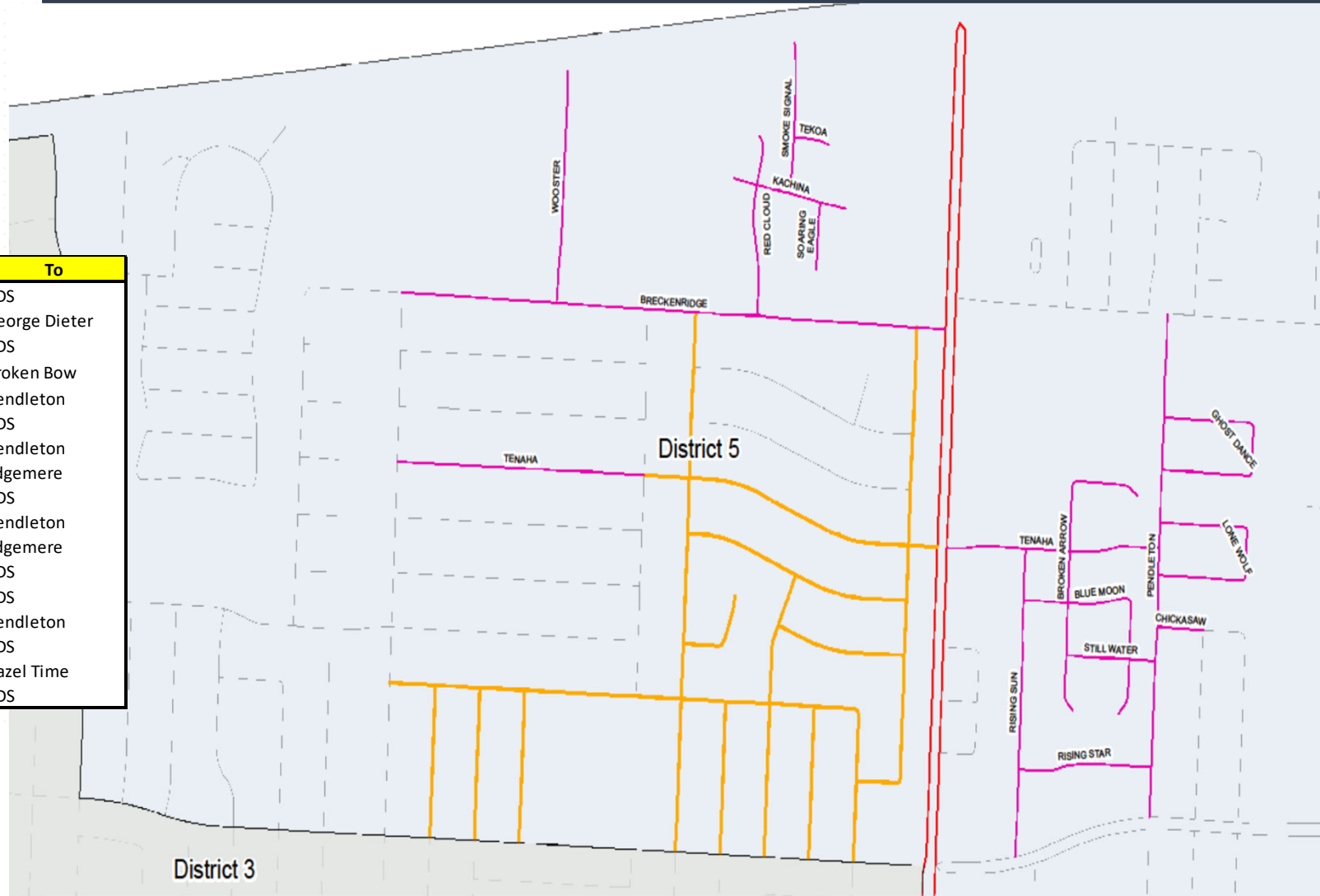
**Magenta** – Proposed residential streets  
FY21-22

**Orange** – Residential streets from the  
FY19-20 Program

**Green** – 2012 street CIP

**Purple** – Arterial Program

**Blue** – TxDOT



## District 6

Programmed for  
FY 23/24/25

Dist	Location	From	To
6	BENITO	Candalaria	CDS
6	CANA	Juno	Alameda
6	CANANEA	Alameda	CDS
6	CANDELARIA	Roseway	Alameda
6	CERES	Hancock	Cana
6	COLINA	Alameda	CDS
6	COLMENERO	Candalaria	CDS
6	GASPAR	Alameda	Socorro
6	HANCOCK	Juno	Presa
6	IRMA	Old Pueblo	CDS
6	JUNO	Cana	Leonardo
6	LEONARDO	Juno	Roseway
6	LOLITA	Valdiviez	CDS
6	MORALES	Juno	CDS
6	OLD PUEBLO	Zaragoza	Alameda
6	PALLA	Hancock	Cana
6	PRESA	Roseway	Alameda
6	SAINT ANTHONY	Candalaria	Juno
6	SAN FERNANDO	Candalaria	Juno
6	SAN PEDRO	Gaspar	CDS
6	SANDOVAL	Candalaria	San Fernando
6	VALDIVIEZ	Candalaria	Juno

**Magenta** – Proposed residential streets  
FY21-22

**Orange** – Residential streets from the  
FY19-20 Program

**Green** – 2012 street CIP

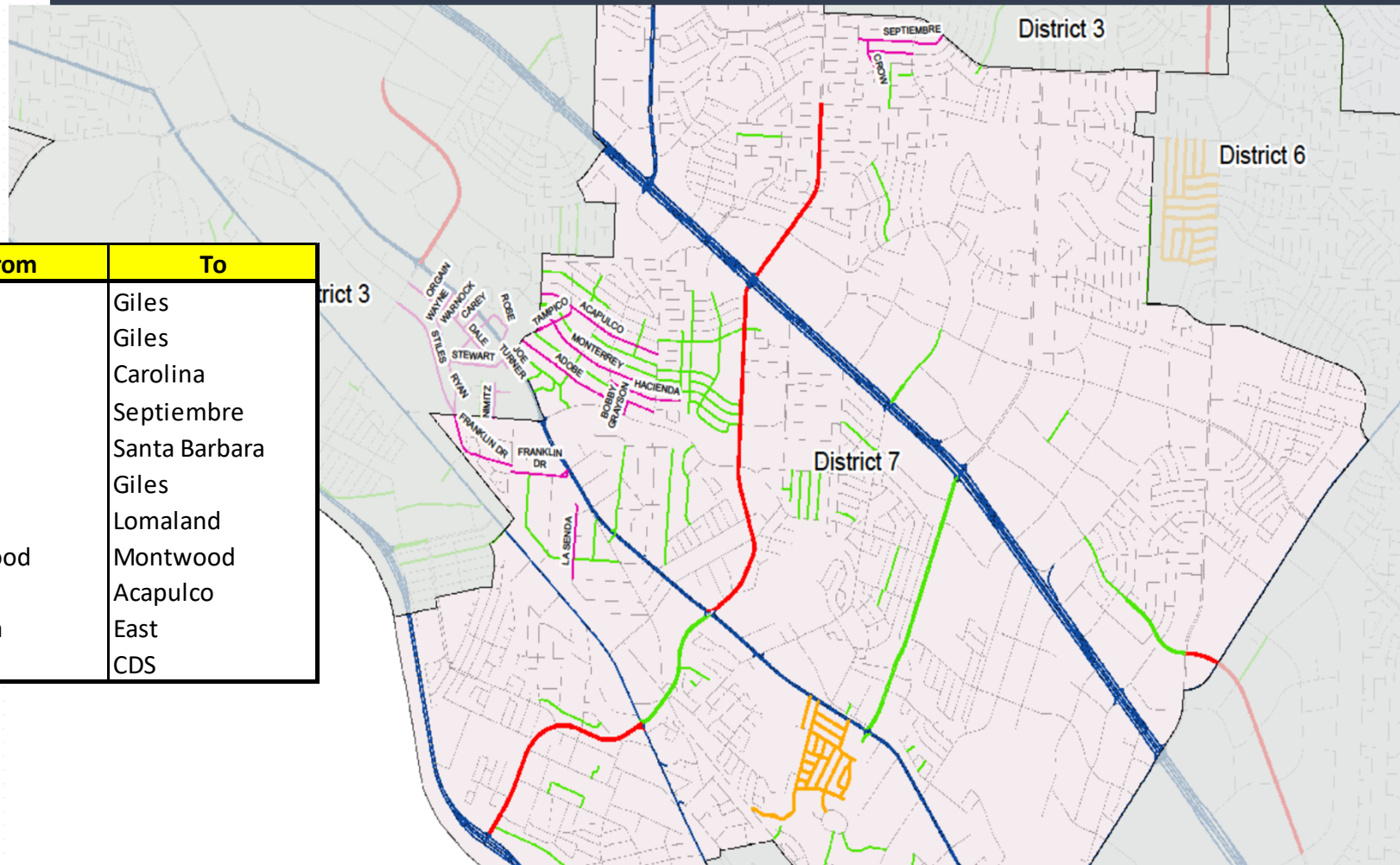
**Purple** – Arterial Program

**Blue** – TxDOT



# District 7

Programmed for  
FY 23/24/25



Dist	Location	From	To
7	ACAPULCO	Hunter	Giles
7	ADOBE	Hunter	Giles
7	BOBBY GRAYSON	Adobe	Carolina
7	CROW	Janway	Septiembre
7	HACIENDA	Ameca	Santa Barbara
7	MONTERREY	Hunter	Giles
7	OCTUBRE	Crow	Lomaland
7	SEPTIEMBRE	Mosswood	Montwood
7	TAMPICO	Hunter	Acapulco
7	FRANKLIN	Carolina	East
7	LA SENDA	McCune	CDS

**Magenta** – Proposed residential streets  
FY21-22

**Orange** – Residential streets from the  
FY19-20 Program

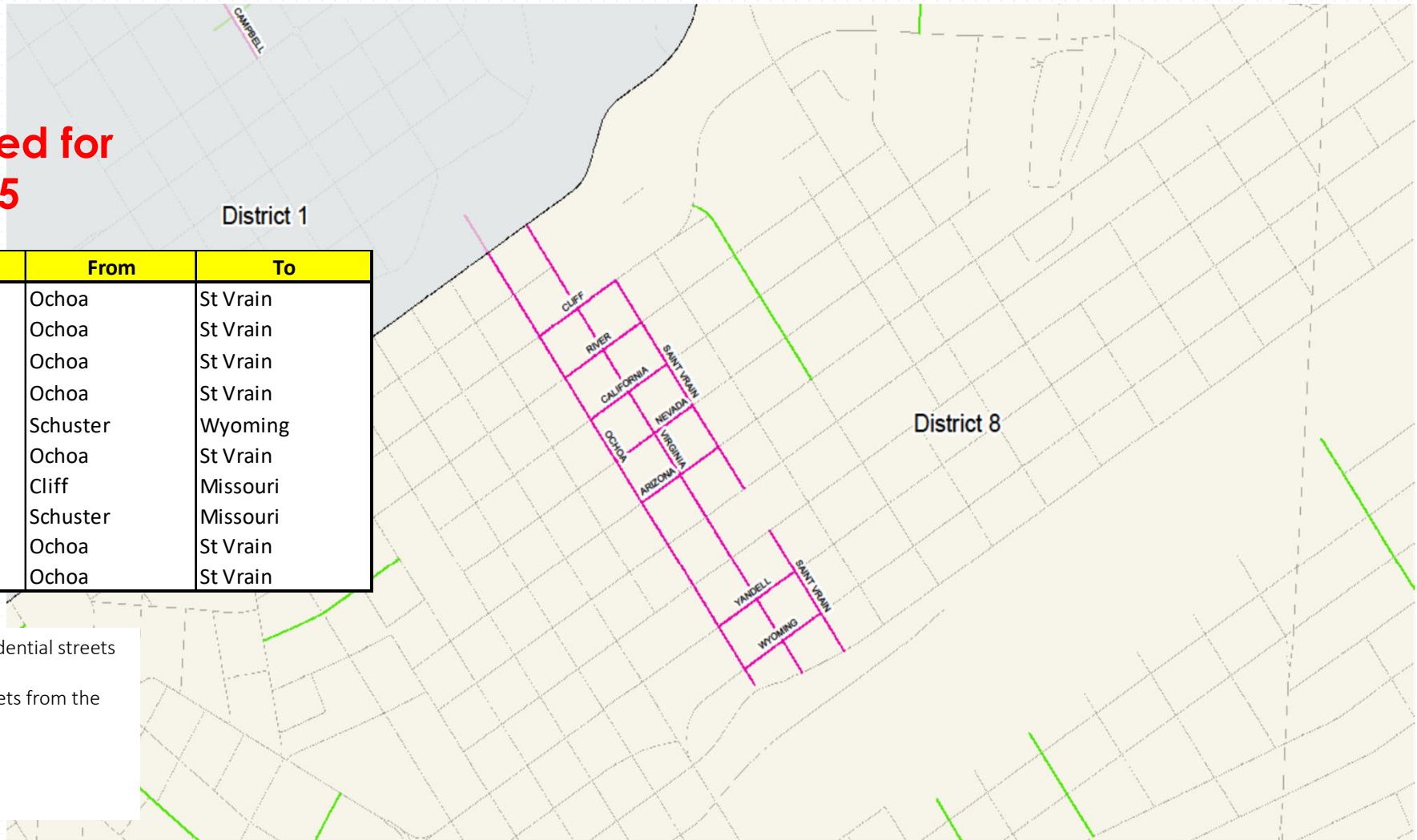
**Green** – 2012 street CIP

**Purple** – Arterial Program

**Blue** – TxDOT

# District 8

Programmed for  
FY 23/24/25



Dist	Location	From	To
8	ARIZONA	Ochoa	St Vrain
8	CALIFORNIA	Ochoa	St Vrain
8	CLIFF	Ochoa	St Vrain
8	NEVADA	Ochoa	St Vrain
8	OCHOA	Schuster	Wyoming
8	RIVER	Ochoa	St Vrain
8	SAINT VRAIN	Cliff	Missouri
8	VIRGINIA	Schuster	Missouri
8	WYOMING	Ochoa	St Vrain
8	YANDELL	Ochoa	St Vrain

**Magenta** – Proposed residential streets  
FY21-22

**Orange** – Residential streets from the  
FY19-20 Program

**Green** – 2012 street CIP

**Purple** – Arterial Program

**Blue** – TxDOT

# 2017 Capital Plan

Approved by City Council on  
August 7, 2017





# 31 Completed Projects

Cohen Stadium Canopy	Silver Spring and Shadow Mountain Signal
Chamizal Pedestrian Enhancements Phase 1	Alameda and Whittier Signal
Design of 2 Regional Aquatic Facilities	Fire Station Restrooms
Kenworthy and Sun Valley Signal	New Fire Trucks and Ambulance
Marcus Uribe and Sean Haggerty Signal	Non-Public Safety Vehicles
Northgate Removal from Flood Plain	North Loop and Lafayette Signal
Paseo de las Luces	Northwestern and Helen of Troy Signal
PCI Study	Pellicano and Michelangelo Signal
Pebble Hills and Rich Beem Signal	Resler and Nardo Goodman Signal
Pebble Hills and Sun Fire Signal	Rich Beem-Edgemere Roundabout
Police Department Facilities Master Plan	Schuster and El Paso Signal
Police Fleet Replacement	University Pedestrian & Bicycle Enhancements
Resler and Northern Pass Signal	Zaragoza and John Hayes Signal
San Jacinto Restrooms	Zaragoza POE, Winn Road, Pan American Dr Improvements
Spray Parks Enhancements	
Tierra Cortez and Tierra Este Signal	

## 1 Projects in Design

Project	District	Estimate	Est. Construction Start
Rojas Widening	6	\$12,940,373	Spring 2022

## 2 Projects in Bidding

Project	District	Estimate	Est. Construction Start
Doniphan and Bird Signal	8	\$300,000	Winter 2021
Doniphan and West Green Signal	1	\$300,000	Winter 2021

## 4 Projects in Construction

Project	District	Estimate	Est. Completion
Bicycle Connectivity Phase I (Repeats in 2018 Cap Plan)	CW	\$2,332,844	Fall 2021
Chamizal Pedestrian Enhancements Phase II	8	\$1,333,502	Fall 2021
Delta Bridge Reconstruction	3	\$1,640,103	Fall 2022
Rio del Norte Intersection Improvements	6	\$500,000	Winter 2021

# 2018 Capital Plan

Approved by City Council on  
December 18, 2017



# 1 Project in Design

Project	District	Estimate	Est. Construction Start
Railroad Reconstruction	4	\$5,000,000	TBD

# 3 Projects in Bidding

Project	District	Estimate	Est. Completion
Oregon Lighting	8	\$2,000,000	Early 2022
Schuster Reconstruction	1 & 8	\$7,559,900	2022

# 8 Projects in Construction

Street	District	Estimate	Est. Completion
Alabama Bridge Reconstruction	2	\$1,528,764	Fall 2021
Bicycle Connectivity Phase II	CW	\$1,909,149	Fall 2021
Far East Transfer Center	5	\$5,000,000	Winter 2021
Hawkins Reconstruction	3	\$9,360,000	Summer 2021
Montana Pedestrian Enhancement	2	\$3,241,465	Winter 2021
Montana Rapid Transit System	2,3,5	\$49,200,000	Early 2022
PDN Roundabout	8	\$3,100,000	Fall 2021
Yarbrough Bridge Reconstruction	7	\$1,965,491	Summer 2022

### 3 Future Programmed Projects

Project	District	Estimate	Est. Construction Start
Ted Houghton Reconstruction	6	\$1,273,080	2022
Tom Lea Slope Stabilization	1	\$8,411,993	2023

### 5 Completed Projects

Project	District	Estimate	Status
Brian Ray Reconstruction	6	\$2,121,000	Complete
Border West Expressway TXDOT	CW	\$281,700.00	Complete
Davis Bridge Reconstruction	6	\$812,437	Complete
Downtown Sidewalks	8	\$598,700	Complete
Lighting on Paso Del Norte Trail	1	\$600,000	Complete

# 2019 Capital Plan

Approved by City Council on  
April 30, 2018, amended on  
July 23, 2018



## 10 Projects in Design

Project	District	Estimate	Est. Construction Start
El Paso Citywide Wayfinding Phase I	CW	\$1,030,000	2022
Sun City Lights	2,6,7	\$3,150,000	2022
Pebble Hills, Airport Road, Vista Del Sol Roadway Lighting and Landscape Improvements	2,3,6,7	\$7,455,500	2022
Sunland Park, Shadow Mountain, Westwind, Redd Road Phase II ,Executive Center Roadway Lighting and Landscape Improvements	1,8	\$10,727,200	2022
El Paso Citywide Wayfinding Phase I , II and III	CW	\$1,030,000	2022

## 6 Projects in Construction

Project	District	Estimate	Est. Completion
Pellicano Dr, Railroad Dr, Cotton Street Median Improvements	1,2,4,6,8	\$10,079,200	Summer 2021
Yarbrough South, George Dieter & Lee Trevino Roadway Lighting and Median Landscape	7	\$8,327,600	Summer 2021

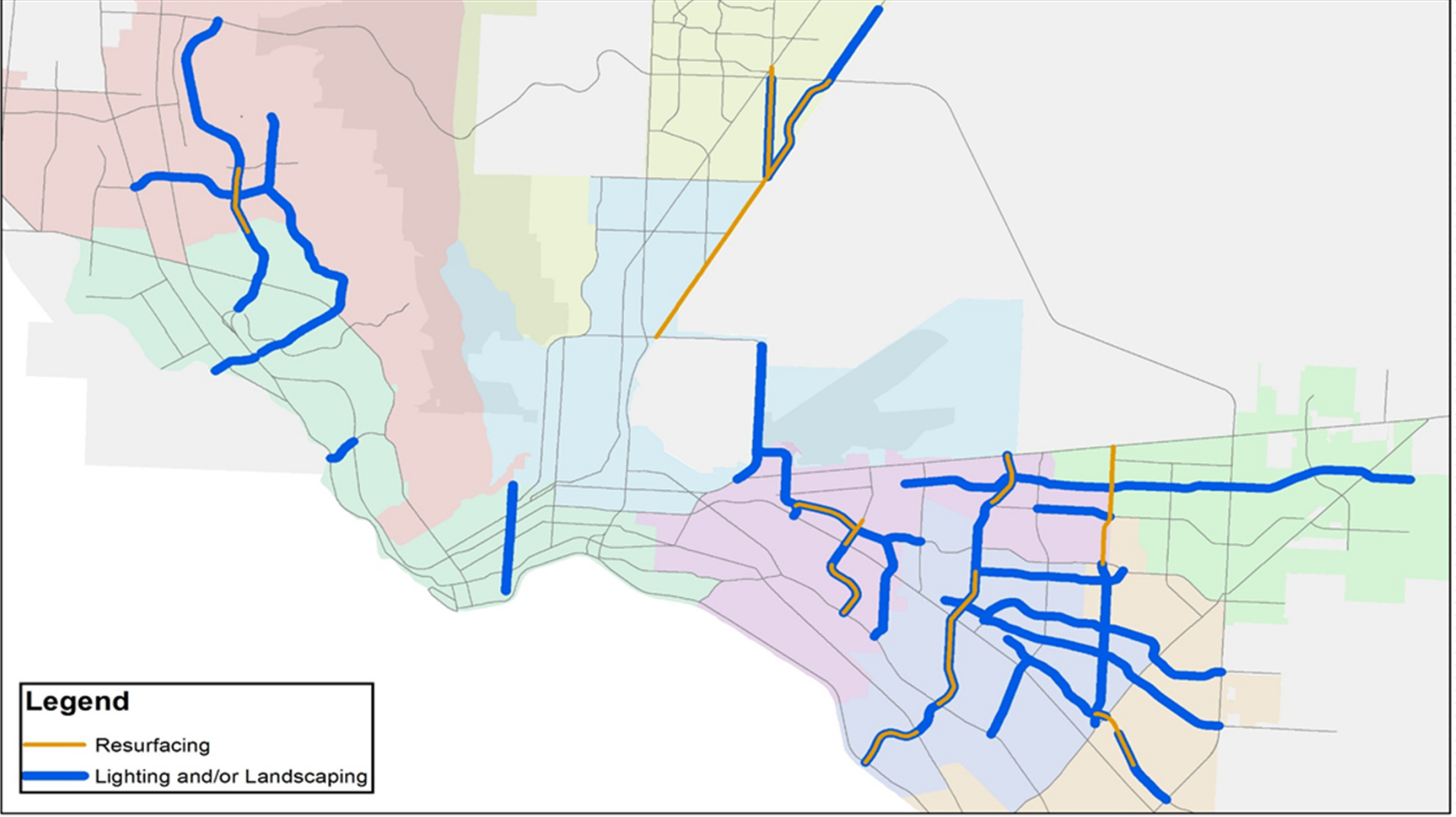
## Future Projects

Project	District	Estimate
Phase 3 Lighting and Landscape Improvements: Edgemere Drive Hunter Drive Mc Combs Street Trawood Drive Resler Drive Rojas Drive	CW	\$20,597,000



# Top 25 Arterial Improvements

73



# 2020 Capital Plan

Approved by City Council  
December 9, 2019



## 19 Projects in Pre-Design / Design

Project	District	Estimate	Est. Construction Start
Dyer and Tiger Eye traffic signal	4	\$37,773	2022
Edgemere and Tierra Dorada traffic signal	5	\$39,810	2022
Edgemere and Tim Foster traffic signal	5	\$39,810	2022
Frontera & Roxbury School Flasher	1	\$37,773	2022
Hawkins and WH Burges traffic signal	3	\$37,773	2022
Lee Trevino and Ivanhoe traffic signal	3	\$37,773	2022
Mesa Hills and Cabaret traffic signal	8	\$39,810	2022
North Loop and Burgundy traffic signal	6	\$37,773	2022
Paseo Del Norte and GWL Site traffic Signal	1	\$39,810	2022
Paseo Del Norte and Northern Pass traffic signal	1	\$37,773	2022
Pebble Hills and John Hayes traffic signal	5	\$39,810	2022

## 19 Projects in Pre-Design / Design (Cont'd)

Project	District	Estimate	Est. Construction Start
Pebble Hills and Tierra Mina traffic signal	5	\$39,810	2022
Pebble Hills and Tim Foster traffic signal	5	\$39,810	2022
Rich Beem and Ralph Seitsinger traffic signal	5	\$37,773	2022
Sean Haggerty and Rushing traffic signal	4	\$37,773	2022
Sun City Lights - District 3	3	\$1,060,800	2022
Ventana and Tierra Este traffic signal	5	\$39,810	2022
Zaragoza and Castner traffic signal	6,7	\$39,810	2022
Zaragoza and Golden Gate traffic signal	6	\$39,810	2022

---

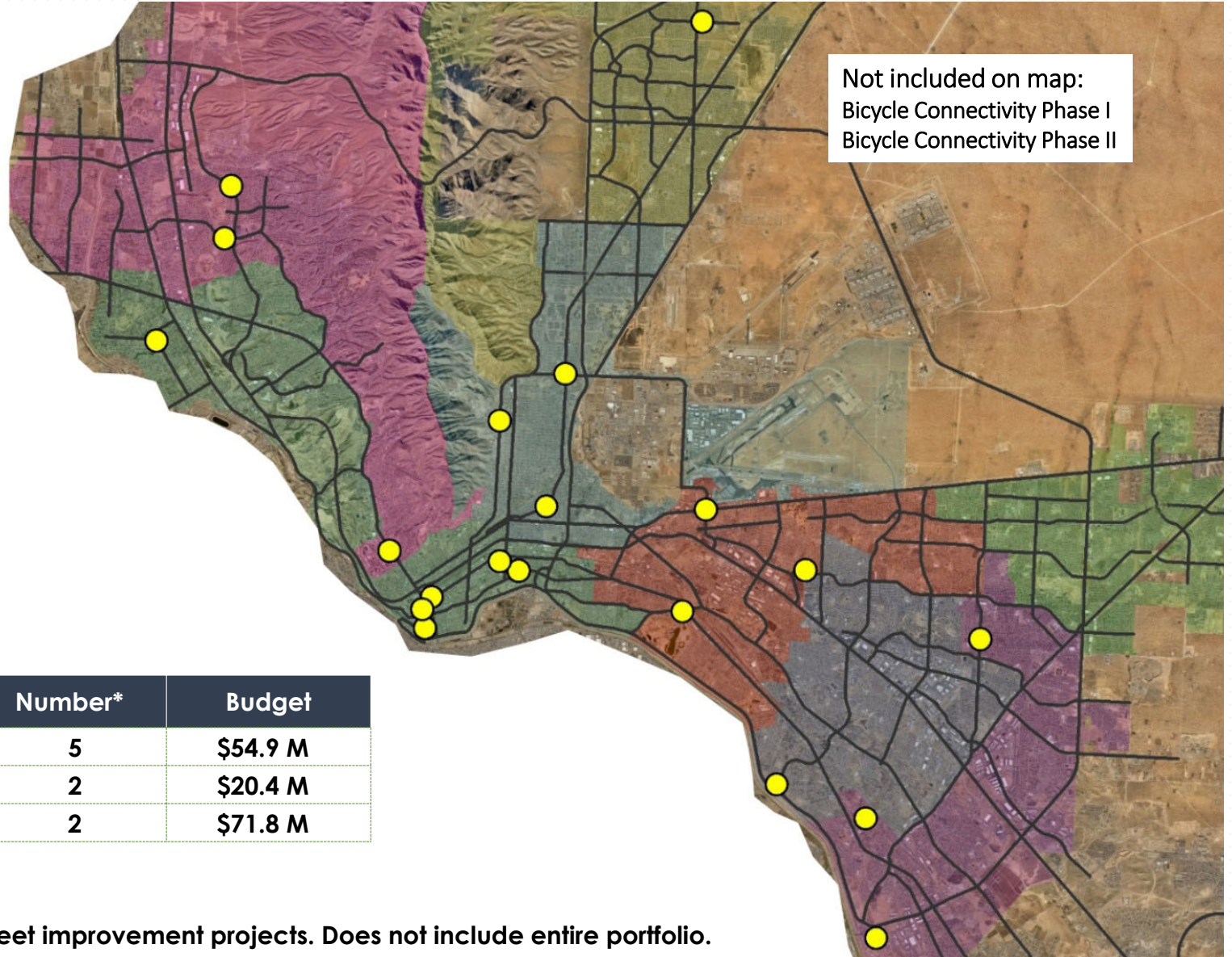
# MPO

---

# Street Improvements

- City match funds may range from 5-20% of the overall project cost
- Leverage City funds to provide improvements needed by the community





Phase	Number*	Budget
Design	5	\$54.9 M
Bidding	2	\$20.4 M
Construction	2	\$71.8 M

\* Only represents street improvement projects. Does not include entire portfolio.

## Projects in Design

Street	Scope	Estimate	Status / Est. Construction Start
Citywide Bicycle Infrastructure	Bicycle Improvements	\$5,978,305	Spring 2022
ITS Infrastructure at Zaragoza and BOTA On-system	Int'l Bridge Technology Improvements	\$16,000,000	Fall 2022
ITS Infrastructure at Zaragoza and BOTA Off-system	Bridge Technology Improvements	\$18,000,000	Fall 2023
Playa Drain Shared Use Path PM	Pedestrian Improvements	\$2,063,990	Early 2022
Rojas Widening	Infrastructure Improvements	\$12,940,373	Spring 2022

## Projects in Bidding

Street	Scope	Estimate	Status / Est. Construction Start
Central Business District Phase IV	Infrastructure Improvements	\$18,417,036	In Bidding
Oregon Lighting	Infrastructure Improvements	\$2,000,000	Summer 2021



## Projects in Construction

Street	Scope	Estimate	Est. Completion
Alabama Bridge Reconstruction	Bridge Replacement	\$1,528,764	Fall 2021
Bicycle Connectivity Phase I	Bicycle Improvements	\$2,332,844	Fall 2021
Bicycle Connectivity Phase II	Bicycle Improvements	\$1,909,149	Fall 2021
Chamizal Pedestrian Enhancements Phase 2	Pedestrian Improvements	\$1,333,502	Fall 2021
<b>Davis Bridge Reconstruction</b>	<b>Bridge Replacement</b>	<b>\$812,437</b>	<b>COMPLETE</b>
Delta Bridge Reconstruction	Bridge Replacement	\$1,640,103	Fall 2022
Far East Transfer Center	Transit	\$5,000,000	Winter 2021
Montana Pedestrian Enhancements	Pedestrian Improvements	\$3,241,465	Winter 2021
Montana Rapid Transit System	Transit	\$49,200,000	Early 2022
PDN Roundabout	Intersection Improvements	\$3,100,000	Fall 2021
Rio del Norte Intersection Improvements	Pedestrian Improvements	\$500,000	Winter 2021
Yarbrough Bridge Reconstruction	Bridge Replacement	\$1,965,491	Summer 2022

# CDBG

## Community Development Build Grant



# Street Improvements

## Projects in Process

Street	Scope	Estimate	Est. Construction Start
Fort Boulevard Improvements	Pedestrian Improvements	\$615,556	Summer 2021
Trowbridge Drive Improvements	Pedestrian Improvements	\$1,005,050	Winter 2021



Trowbridge Existing Conditions



Fort Boulevard Existing Conditions

# Street Pavement Continues to be a high priority for our Community

## Future Options:

1. Restore the \$7M residential
2. Additional franchise funding opportunities
3. Street Maintenance Service Fee
  - (requires charter amendment)
4. Bond Package

## Mission

Deliver exceptional services to support a high quality of life and place for our community

## Values

Integrity, **R**espect, **E**xcellence, **A**ccountability, **P**eople



## Vision

Develop a vibrant regional economy, safe and beautiful neighborhoods and exceptional recreational, cultural and educational opportunities powered by a high performing government

# THANK YOU