



# Canterbury Trails Improvements Engineering and Design Services

Solicitation No: 2022-0402

August 1, 2023

## Strategic Plan Goal:

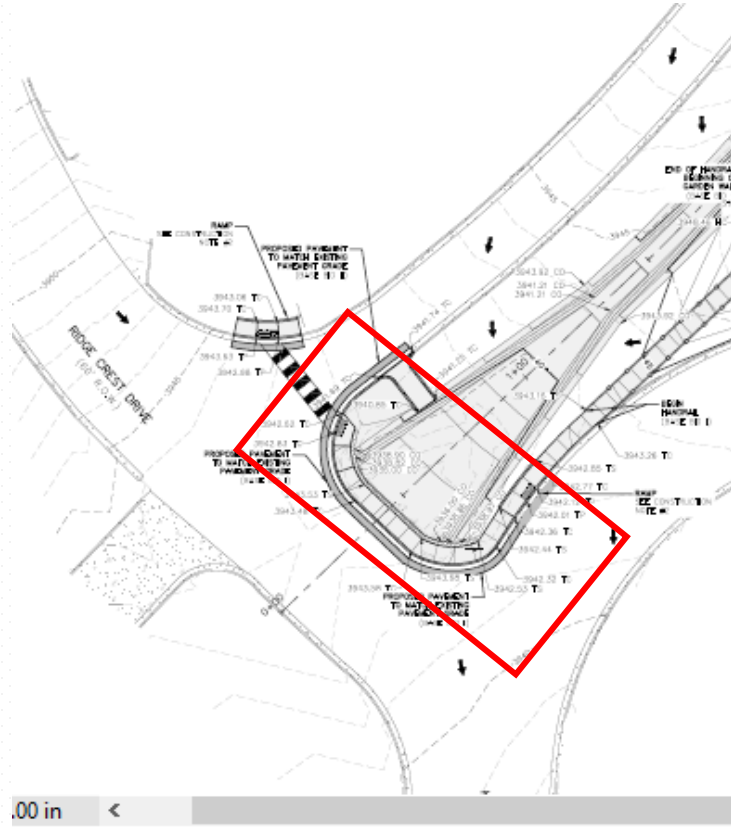
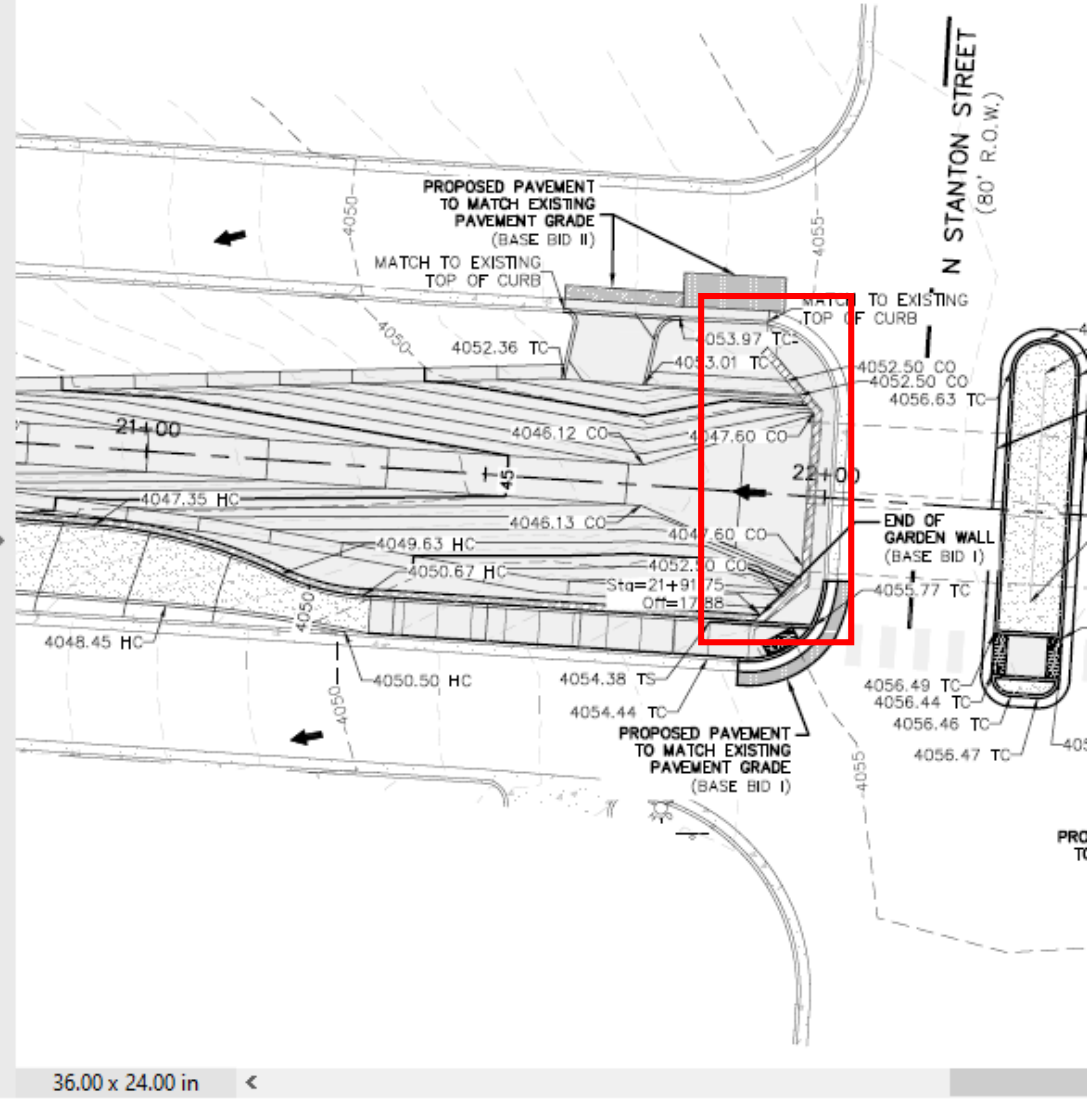
- 7) Enhance and sustain El Paso's infrastructure network
- 7.2) Improve competitiveness through infrastructure improvements impacting the quality of life



# Project Details

<b>Location:</b>	<b>Canterbury Drive from Ridgecrest Dr to N Stanton St</b>
<b>District(s):</b>	<b>8</b>
<b>Cost:</b>	<b>\$341,500.70</b>
<b>Funding Source:</b>	<b>El Paso Water</b>
<b>Project Benefits:</b>	<b>Extend EPWU's drainage infrastructure's life to a minimum of 50 years.</b>
<b>Background:</b>	<b>This change order is for the rehabilitation of the existing Corrugated Metal Pipe (CMP), funded by EPWU</b>

# CMP rehabilitation project limits





# 4

# Existing Conditions



RE-GROUT, REPAIR, AND RE-POINT OF EXISTING ROCKWALLS SHALL BE BID AS PART OF BASE BID II. LIMITS OF REPAIR SHALL INCLUDE BOTH UPSTREAM AND DOWNSTREAM ROCKWALLS, INCLUDING FACE OF ROCKWALLS ALONG STANTON STREET AND RIDGE CREST DRIVE.

# 5 Scope of Work

- EPWU requested the rehabilitation (geopolymer spray coat lining) of the existing corrugated metal pipe (CMP) drainage structures at Stanton Street and Ridge Crest Drive.



## Mission

Deliver exceptional services to support a high quality of life and place for our community

## Values

Integrity, **R**espect, **E**xcellence,  
**A**ccountability, **P**eople

## Vision

Develop a vibrant regional economy, safe and beautiful neighborhoods and exceptional recreational, cultural and educational opportunities powered by a high performing government



## Misión

Brindar servicios excepcionales para respaldar una vida y un lugar de alta calidad para nuestra comunidad

## Valores

Integridad, **R**espeto, **E**xcelencia, **R**esponsabilidad, **P**ersonas

## Visión

Desarrollar una economía regional vibrante, vecindarios seguros y hermosos y oportunidades recreativas, culturales y educativas excepcionales impulsadas por un gobierno de alto desempeño