



Street Infrastructure Comprehensive Update

December 14, 2021



ACTIVE STREET PROGRAM STATUS

- 2012 Street CIP
 - Reconstruction Update
 - Resurfacing Update
- \$3 M Collector Resurfacing
- \$7 M Residential Resurfacing
- Capital Plans
 - 2017
 - 2018
 - 2019
 - 2020
- MPO and CDBG Projects



4: Enhance El Paso's Quality of Life Through Recreational, Cultural, and Educational Environments

7: Enhance and Sustain El Paso's Infrastructure Network



Strategic Plan Alignment





2012 Street CIP



- June 26, 2012: City Council approved \$218.4 M for street improvements

Little initial progress in implementation

- Between 2012 to 2016, only one project completed
- Only \$52 M spent between 2013-2016 (4 years)

- March 8, 2016: City Council CIP recalibration
 - ✓ Observations and input from public
 - ✓ Dedicated funding for specific street improvements
 - ✓ Greater Council oversight of CIP implementation
- August 7, 2017: Council approved expediting arterial resurfacing (Transferred \$21.8 M from Reconstruction to Resurfacing Top 25 Arterials)
- December 18, 2017 Council approved expediting reconstruction projects
- Pre-COVID, on schedule to complete by 2021

Program History

- **June 26, 2012:** City Council approved \$218.4 M for street improvements
- **March 8, 2016:** City Council CIP recalibration
 - Observations and input from public
 - Dedicated funding for specific street improvements
 - Greater Council oversight of CIP implementation
- **August 7, 2017:** Council approved expediting arterial resurfacing (Transferred \$21.8 M from Reconstruction to Resurfacing Top 25 Arterials)
- **December 18, 2017** Council approved expediting reconstruction projects
- **February 15, 2021** Council approved to allocate Investment Interest to projects within each Capital Program.

| Status | 3/2016 | 12/2017 | 2/2019 | 6/2019 | 10/2019 | 2/2020 | 7/2020 | 8/2020 | 1/2020 | 4/2021 | 12/2021 |
|--------------------|-----------|-----------|-----------|-----------|-----------|-----------|-----------|-----------|-----------|-----------|------------|
| Completed | 2 | 10 | 18 | 21 | 21 | 27 | 35 | 35 | 42 | 47 | 56 |
| Bid / Construction | 6 | 7 | 25 | 27 | 34 | 36 | 24 | 24 | 17 | 16+1 NTMP | 8 + 1 NTMP |
| Design | 10 | 27 | 22 | 17 | 10 | 2 | 0 | 0 | 0 | 2 | 1 |
| Programmed | 47 | 21 | 0 | 0 | 0 | 0 | 0 | 0 | 0 | 0 | 0 |
| Deferred | 0 | 0 | 0 | 0 | 0 | 0 | 6+1 NTMP | 6+1 NTMP | 6+1 NTMP | 0 | 0 |
| TOTAL | 65 | 65 | 65 | 65 | 65 | 65 | 65 | 65 | 65 | 65 | 65 |

Recalibration
Expedite 21 Projects

2012 Street CIP Reconstruction



1 Projects in Design

| Project | District | Estimate | Est. Construction Start |
|-------------------------|----------|-----------|-------------------------|
| Phillipy Reconstruction | 6 | \$797,632 | Spring 2022 |

5 Projects in Bidding

| Project | District | Estimate | Est. construction Start |
|----------------------------------------------------------------------------------------------|----------|-------------|-------------------------|
| Canterbury Trail | 1 | \$1,302,300 | Early 2022 |
| Padilla Reconstruction | 6 | \$2,249,005 | Winter 2022 |
| South Central Phase 5 - Edna(East of Concepcion), Cortez (South of Delta) Reconstruction (2) | 8 | \$6,224,221 | Spring 2022 |
| Sunglow Landscaping | 3 | \$388,351 | Winter 2021 |

3 + 1 NTMP Under Construction

| Project | District | Estimate | Estimated Completion |
|----------------------------------------------------------|----------|-------------|----------------------|
| Gene Torres NTMP | 6 | \$798,600 | Summer 2022 |
| Lowd Reconstruction | 7 | \$1,944,000 | Winter 2021 |
| MCA Quiet Zones | 3,8 | \$6,162,048 | Winter 2021 |
| Viscount Boulevard Roadway Lighting and Median Landscape | 3 | \$3,053,700 | Early 2022 |

56 + 2 NTMP Completed Projects

| | | |
|--------------------------------------------------------------|---------------------------------------------------|-----------------------------------------------------------------------------------------------------|
| Alicia Drive Reconstruction | Kernel Reconstruction | RC Poe and Edgemere Roundabout |
| Annie Reconstruction | Little Flower Reconstruction | Redd Road Median Landscape and Lighting |
| Barker Reconstruction | Lomaland Reconstruction | Rich Beem Street Lighting |
| Central at Paisano | Love Rd Property Acquisition | Rim at Hague Intersection Improvements |
| Cielo Vista Sidewalk Repair | Manor Reconstruction | Riverbend Phase III |
| Davis Reconstruction | Mauer Road NTMP | Robinson Reconstruction Phase I |
| Deer Ave NTMP | McCune Reconstruction | Robinson Reconstruction Phase II |
| Edgemere Parkway | Mesquite Hills Street Lighting | Snelson Reconstruction |
| Edgemere Trail Widening, Lighting and Landscape Improvements | Mimosa Reconstruction | South Central Phase 2 - Encino(North of Delta), DeVargas, Cortez(North of Delta) Reconstruction (3) |
| Ethel Reconstruction | Monroe 2-way conversion | South Central Phase 3 - Encino (South of Delta), Elena, Feliz Reconstruction (2) |
| Flower Reconstruction | Montoya Heights Sidewalk | South Central Phase 4 - Edna(West of Concepcion), Dolan Reconstruction (2) |
| Geiger, Cardis, Malaga Reconstruction | New Haven Reconstruction | Springwood Traffic Calming |
| Glenwood Reconstruction | Paddlefoot Reconstruction | Teramar Reconstruction |
| Holly Reconstruction | Pebble Hills Extension | Toni, Mary Jeanne, Yvonne Reconstruction |
| Independence Trail and Amenities (2) | Pendale Reconstruction | University Pedestrian Improvements |
| James Reconstruction | Princeton, Tullane, Valleyview Reconstruction (3) | Van Buren 2-way conversion |
| John Hayes Arterial Lighting | Ramos Reconstruction | Yarbrough North Lighting and Median Landscape |

Street CIP Resurfacing Update – City wide

Active Street Resurfacing Projects:

1. 2012 Street CIP for Street Resurfacing – **99.5% complete**
All remaining streets under contract
2. Arterial Resurfacing Program – **95 % complete**
Pending completion of Hawkins from I-10 to gazelle

Progress on Active Street Resurfacing Projects:

- 2012 CO's - **372** Streets Completed – 2 locations in progress or programmed
- Arterial Program - **7** completed and **1** in progress

Street CIP Resurfacing– City wide

\$7 M Residential

FY 19 and 20 Program (Programmed to FY 2022 / FY 2023:

- 62% Residential streets complete
- Residential Program - 41 streets completed – 6 in Progress, 57 to be programmed

FY 21 and 22 Program (Programmed to FY 22 / 23 / 24:

- All remaining streets FY 21 and FY 22 programmed to FY 22/23/24

\$3 M Collectors Fee

- FY 2020 – 100% Complete
- FY 2021 – 100% Complete
- FY 21 – 23: 5 Roads Complete, 1 In progress, 4 Programmed

2012 Street CIP Resurfacing



District 1 - Includes 2012 Street CIP; and Arterial Program

44 Completed

| Location | From | To | Status | Program | Location | From | To | Status | Program |
|--------------|---------------|-------------|-----------|-----------|---------------|-----------------|--------------|-----------|-----------|
| ALTACUMBRE | Camino Fuente | Tarascas | Completed | 2012 CO's | MESA HILLS | Mesa | Acacia | Completed | 2012 CO's |
| AMPOSTA | Cresta Alta | Westwind | Completed | 2012 CO's | MESITA | Piedmont | Stanton | Completed | 2012 CO's |
| BOX ELDER | Gomez | Rollins | Completed | 2012 CO's | MOORE | Piedmont | Stockwell | Completed | 2012 CO's |
| BRENTWOOD | Stanton | Krupp | Completed | 2012 CO's | NAVARIE | Pinar del Rio | Redd | Completed | 2012 CO's |
| BUTTERFIELD | Territory | Rio Mira | Completed | 2012 CO's | NEW YORK | St. Vrain | Dead End | Completed | 2012 CO's |
| CALLE OLASO | Equestre | Dead End | Completed | 2012 CO's | OCTAVIA | Kerbey CDS | Magoffin | Completed | 2012 CO's |
| CHERRY HILL | Broadmoor | Thunderbird | Completed | 2012 CO's | ONEIDA | Medano | Redd | Completed | 2012 CO's |
| CINCINNATI | Kansas | Piedmont | Completed | 2012 CO's | OSAPLE | Rio Mira | Dead End | Completed | 2012 CO's |
| CLAYTON | Galloway | Robinson | Completed | 2012 CO's | PAWNEE | Iroquis | Dead End | Completed | 2012 CO's |
| COSTA BLANCA | Pinar del Rio | Redd | Completed | 2012 CO's | PEBBLE BEACH | Shadow Mountain | Burning Tree | Completed | 2012 CO's |
| DEDE | Rim | Cul-de-Sac | Completed | 2012 CO's | RHAELYNNE | Cory | Upper Valley | Completed | 2012 CO's |
| FLAMINGO | Krupp | Stanton | Completed | 2012 CO's | RIO MIRA | Butterfield | Territory | Completed | 2012 CO's |
| GALLOWAY | Stanton | Piedmont | Completed | 2012 CO's | ROXANNA | Ridge | Marietta | Completed | 2012 CO's |
| HILLCREST | Bancroft | Dead End | Completed | 2012 CO's | SAN MATEO | La Cruz | Piedmont | Completed | 2012 CO's |
| INDIAN BLUFF | Crown Point | Caprock | Completed | 2012 CO's | SANTA RITA | Las Vegas | Okeefe | Completed | 2012 CO's |
| IRONDALE | Lawndale | Stanton | Completed | 2012 CO's | SINGING HILLS | Thunderbird | Thunderbird | Completed | 2012 CO's |
| KELLY | Kern | Whitaker | Completed | 2012 CO's | SOLEDAD | Mulberry | La Mirada | Completed | 2012 CO's |
| KRUPP | Waymore | Ridgecrest | Completed | 2012 CO's | TERRITORY | Butterfield | Rio Mira | Completed | 2012 CO's |
| LA CRUZ | Okeefe | Piedmont | Completed | 2012 CO's | WALLINGTON | Krupp | Brentwood | Completed | 2012 CO's |
| LARCHMONT | Krupp | Waymore | Completed | 2012 CO's | WELLESLEY | Kern | Campbell | Completed | 2012 CO's |
| LOS NIETOS | La Mirada | La Mirada | Completed | 2012 CO's | PARK HILL | Ridgecrest | Ridgecrest | Completed | 2012 CO's |
| MADELINE | Piedmont | Park | Completed | 2012 CO's | RESLER | High Ridge | White Cliffs | Completed | Arterials |

*Resler is an arterial program street –section of this is in District 8

District 2 - Includes 2012 Street CIP; and Arterial Program

65 Completed

| Location | From | To | Status | Program | Location | From | To | Status | Program |
|------------|---------------|---------------|-----------|-----------|-----------------|-----------------|---------------|-----------|-----------|
| Alley | Piedras | Raynor | Completed | 2012 CO's | MAXWELL | Dyer | Diana | Completed | 2012 CO's |
| BERYL | Dolomite | Echo | Completed | 2012 CO's | MCGREGOR | Maxwell | Diana | Completed | 2012 CO's |
| BRITTON | Dyer | Sierra Vista | Completed | 2012 CO's | MEMPHIS | Stevens | Belmont CDS | Completed | 2012 CO's |
| BROADDUS | Alabama | Stevens | Completed | 2012 CO's | MEMPHIS | Red Rock Canyon | Piedras | Completed | 2012 CO's |
| BYRON | Van Buren | Monroe | Completed | 2012 CO's | MOBILE | Piedras | Dead End | Completed | 2012 CO's |
| CAPITAN | Mt Latona | Hercules | Completed | 2012 CO's | MOBILE | Radford | Dead End | Completed | 2012 CO's |
| CHELSEA | Timberwolf | Trowbridge | Completed | 2012 CO's | MOUNT DELANO | Hondo Pass | Blue Ridge | Completed | 2012 CO's |
| CLIFTON | Hueco | Gateway South | Completed | 2012 CO's | MOUNT ETNA | Rutherford | Glacier Peak | Completed | 2012 CO's |
| CROSSON | CDS | CDS | Completed | 2012 CO's | MOUNT HAGEN | Pikes Peak | Blue Ridge | Completed | 2012 CO's |
| CUMBERLAND | Pershing | Gateway South | Completed | 2012 CO's | MOUNT OLYMPUS | Joe Herrera | Glacier Peak | Completed | 2012 CO's |
| DEVORE | Eclipse | Comet | Completed | 2012 CO's | MOUNT SAN BERDU | Joe Herrera | Alps | Completed | 2012 CO's |
| DIAMOND | Westline | Echo | Completed | 2012 CO's | MOUNT WHITNEY | Tetons | Knox | Completed | 2012 CO's |
| DOLOMITE | Magnetic | Zircon | Completed | 2012 CO's | NASHVILLE | Piedras | Dead End | Completed | 2012 CO's |
| ECHO | Hercules | Moonlight | Completed | 2012 CO's | NEBRASKA | Nations | Morehead | Completed | 2012 CO's |
| ELM | Mobile | Richmond | Completed | 2012 CO's | OLYMPIC | Magnetic | Gateway South | Completed | 2012 CO's |
| FORREST | Hunt | Trowbridge | Completed | 2012 CO's | PEINADO | Wagner | Hunt | Completed | 2012 CO's |
| FRANKFORT | Stevens | Bossworth CDS | Completed | 2012 CO's | POLK | Byron | Elm | Completed | 2012 CO's |
| GRANT | Piedras | Copper | Completed | 2012 CO's | POLLARD | Jefferson | Gateway South | Completed | 2012 CO's |
| GRISSOM | Martin | Mathias | Completed | 2012 CO's | RAILROAD | Loop 375 | US 54 | Completed | 2012 CO's |
| HAPPER | Leeds | Cambridge | Completed | 2012 CO's | ROBERT | Maxwell | Arlen | Completed | 2012 CO's |
| HASTINGS | Happer | Gateway South | Completed | 2012 CO's | SATURN | Edgar Park | Hercules | Completed | 2012 CO's |
| HOMER | Gateway South | Joyce | Completed | 2012 CO's | SHEPPARD | Alabama | Lackland | Completed | 2012 CO's |
| HUNT | Peinado | Glenwood | Completed | 2012 CO's | SOLAR | Edgar Park | Hercules | Completed | 2012 CO's |
| JADE | Zircon | Echo | Completed | 2012 CO's | STATLER | Tetons | Adolphus | Completed | 2012 CO's |
| JUSTUS | Jefferson | Tyler | Completed | 2012 CO's | STEVENS | Harrison | McKinley | Completed | 2012 CO's |
| LACKLAND | Van Buren | Monroe | Completed | 2012 CO's | STRAND | McGregor | Maxwell | Completed | 2012 CO's |
| LAMAR | Bliss | Hueco | Completed | 2012 CO's | TAYLOR | Piedras | Terminus | Completed | 2012 CO's |
| LOUISIANA | Mobile | Richmond | Completed | 2012 CO's | TRADEWIND | Mercury | Neptune | Completed | 2012 CO's |
| MADERA | Radford | Dead End | Completed | 2012 CO's | VEGA | Polaris | Comet | Completed | 2012 CO's |
| MARR | Altura | Trowbridge | Completed | 2012 CO's | WAGNER | Chelsea | Trowbridge | Completed | 2012 CO's |
| MATTERHORN | Rutherford | Glacier Peak | Completed | 2012 CO's | WEIGHTMAN | Timberwolf | Edwards | Completed | 2012 CO's |
| MAXWELL | Gateway North | Dyer | Completed | 2012 CO's | WILSON | Pershing | Dead End | Completed | 2012 CO's |

**Sections of Mount Etna, Mount Olympus, Matterhorn, and Mount San Berdu cross into District 4*

**Railroad is an arterial program street-section crosses into District 4*

**Hastings completed in two segments; shown here as originally programmed*

District 3 - Includes 2012 Street CIP; and Arterial Program

64 Completed, 1 In Progress

| Location | From | To | Status | Program | Location | From | To | Status | Program |
|---------------|---------------|--------------|-----------|-----------|---------------|------------------|--------------------|---------------------|-----------|
| ABRAHAM | Alameda | Canary | Completed | 2012 CO's | JOSHUA | Durrill | Dead End | Completed | 2012 CO's |
| ALASKA | Yuma | Phoenix | Completed | 2012 CO's | KAYWOOD | Parkwood | Saigon | Completed | 2012 CO's |
| ALGONQUIN | Geronimo | Marlow | Completed | 2012 CO's | LARRY MAHAN | Gateway West | Viscount | Completed | 2012 CO's |
| ANISE | Lee Trevino | Montwood | Completed | 2012 CO's | LEAR | Boeing | Lockheed | Completed | 2012 CO's |
| AQUARIUS | Turrentine | Backus | Completed | 2012 CO's | LETTIE | Ben Swain | Edith | Completed | 2012 CO's |
| ARAPAHO | Geronimo | Marlow | Completed | 2012 CO's | MCCARTHY | Hockney | Alameda | Completed | 2012 CO's |
| ASH | Dempsey | W H Burges | Completed | 2012 CO's | MERIL | Cardigan | Darin | Completed | 2012 CO's |
| AVALON | Sunglow | Dead End | Completed | 2012 CO's | MIDWAY | Knights | Hockney | Completed | 2012 CO's |
| BALSAM | Barker | Mimosa | Completed | 2012 CO's | MONTROSE | Mc Crae | Dead End | Completed | 2012 CO's |
| BRANDWOOD | Blackwood | Suewood | Completed | 2012 CO's | NAVAJO | Apache | Cheyenne Trail | Completed | 2012 CO's |
| CESSNA | Sunglow | W H Burges | Completed | 2012 CO's | PAPAGO | Clark | Marlow | Completed | 2012 CO's |
| CHIP CHIP | Alameda | Dead End | Completed | 2012 CO's | PEACH TREE | George Orr | C R Croom | Completed | 2012 CO's |
| CIBOLA | Clark | Marlow | Completed | 2012 CO's | PEAR TREE | George Orr | C R Croom | Completed | 2012 CO's |
| CLEVELAND | Paisano | Marlow | Completed | 2012 CO's | PEARL | Amethyst | Dead End | Completed | 2012 CO's |
| COCONUT TREE | Granite | Coconut Tree | Completed | 2012 CO's | PRESTWICK | Cosmos | Kilmaltie | Completed | 2012 CO's |
| CORNWALL | Castletown | Blackwood | Completed | 2012 CO's | RED ROBIN | Canary | George Orr | Completed | 2012 CO's |
| DERICK | Carnegie | Montana | Completed | 2012 CO's | SHELL | Montana | Dead End | Completed | 2012 CO's |
| DOWNUM | McCabe | Darlina | Completed | 2012 CO's | SHETLAND | Edgemere | Ballymote | Completed | 2012 CO's |
| EAST GLEN | Pebble Hills | Sam Snead | Completed | 2012 CO's | STEPHENSON | Gateway East | Frederick | Completed | 2012 CO's |
| EDITH | Little Flower | Ben Swain | Completed | 2012 CO's | SURETY | Gateway East | Clark | Completed | 2012 CO's |
| FIRESTONE | Montana | Darin | Completed | 2012 CO's | TRINITY | Rusk | Simpia | Completed | 2012 CO's |
| FLINT | Polo Inn | Polo Inn | Completed | 2012 CO's | TURRENTINE | Glengarry | Daugherty | Completed | 2012 CO's |
| FRANK BEARD | Sam Snead | Anise | Completed | 2012 CO's | UTE | Clark | Marlow | Completed | 2012 CO's |
| GOURD | Album | Bellis | Completed | 2012 CO's | VIOLET | W H Burges | Cessna | Completed | 2012 CO's |
| GRANITE | George Orr | Polo Inn | Completed | 2012 CO's | VOCATIONAL | Mimosa | Alameda | Completed | 2012 CO's |
| GREEN VALLEY | Carolina | Dead End | Completed | 2012 CO's | WADE | Cosmos | Lait | Completed | 2012 CO's |
| HARDY | Tampa | Dulaney | Completed | 2012 CO's | WOODALL | Blackwood | Suewood | Completed | 2012 CO's |
| HAWAII | Yuma | Phoenix | Completed | 2012 CO's | BEN SWAIN | Toni | Edith | Completed | 2012 CO's |
| HAWICK | Dunoon | Mcintosh | Completed | 2012 CO's | GEORGE DIETER | Montana | Montwood | Completed | Arterials |
| HILLER | Airport | Boeing | Completed | 2012 CO's | VISCOUNT | Airway | Hawkins | Completed | Arterials |
| HOLIDAY | Tampa | Welch | Completed | 2012 CO's | YARBROUGH | Montana | Cesar Chaves | Completed | Arterials |
| INTERNATIONAL | Robert E Lee | Airway | Completed | 2012 CO's | HAWKINS | Merchant/Gazelle | North Loop/Gateway | On Hold Montana RTS | Arterials |
| J C CRAMER | Barker | Coronado | Completed | 2012 CO's | | | | | |

*George Dieter is an arterial program street –section crosses into District 5

*Yarborough is an arterial program street –section crosses into District 7

District 4 - Includes 2012 Street CIP; and Arterial Program

83 Completed

| Location | From | To | Status | Program | Location | From | To | Status | Program |
|-------------------|---------------|---------------|-----------|-----------|----------------|-------------|-------------------|-----------|-----------|
| ABILENE | Cermac | Shenandoah | Completed | 2012 CO's | PARADISE | Alcan | Tropicana | Completed | 2012 CO's |
| AJAX | Crenshaw | Tropicana | Completed | 2012 CO's | PEACOCK | Rushing | Saxon | Completed | 2012 CO's |
| ALCAN | Warren | Fairbanks | Completed | 2012 CO's | PERSIMMON | Marie Tobin | Hondo Pass | Completed | 2012 CO's |
| BLYTHE | Yellowstone | Winthrop | Completed | 2012 CO's | PICKEREL | Marlin | McCombs | Completed | 2012 CO's |
| BOBCAT | Bomarc | Dead End | Completed | 2012 CO's | PONDEROSA | Palomino | Dead End | Completed | 2012 CO's |
| CRENSHAW | Yellowstone | Tropicana | Completed | 2012 CO's | PORT ARTHUR | Sweetwater | Murphy | Completed | 2012 CO's |
| CURLEW | Debeers | Tropicana | Completed | 2012 CO's | POTOMAC | Pheasant | Quail | Completed | 2012 CO's |
| DALTON | Salisbury | Raleigh | Completed | 2012 CO's | RAVEN | Bomarc | Dead End | Completed | 2012 CO's |
| DEARBORNE | Mackinaw | McCombs | Completed | 2012 CO's | RAYMOND TELLES | Alps | Joe Herrera | Completed | 2012 CO's |
| DEBEERS | Ambassador | Mackinaw | Completed | 2012 CO's | REGULUS | Mc Combs | Bomarc | Completed | 2012 CO's |
| DECATUR | Vicksburg | Railroad | Completed | 2012 CO's | ROANOKE | Joe Herrera | Hondo Pass | Completed | 2012 CO's |
| DEER | McCombs | Cross | Completed | 2012 CO's | RUTHERFORD | Stahala | Dyer | Completed | 2012 CO's |
| DOWNS | Fairfax | Raleigh | Completed | 2012 CO's | SAGITTARIUS | Rushing | Kenworthy | Completed | 2012 CO's |
| DUVAL | Marie Tobin | Hondo Pass | Completed | 2012 CO's | SALEM | Rushing | McCombs | Completed | 2012 CO's |
| FAIRFAX | Threadgill | Dalton | Completed | 2012 CO's | SANDERS | Pistacio | Dyer | Completed | 2012 CO's |
| FALCON | Mc Combs | Railroad | Completed | 2012 CO's | SARAH ANNE | McCombs | Terminus | Completed | 2012 CO's |
| FERTELL | Sun Valley | Grouse | Completed | 2012 CO's | SHENANDOAH | Thor | Debeers | Completed | 2012 CO's |
| GRAND CANYON | Zion | Old Spanish | Completed | 2012 CO's | SIGMA | Sagittarius | Dead End | Completed | 2012 CO's |
| GULFPORT | Salisbury | Raleigh | Completed | 2012 CO's | SINCLAIR | Tivoli | Terminus | Completed | 2012 CO's |
| HOLLINGS | Wren | Hondo Pass | Completed | 2012 CO's | THOR | Crenshaw | Winthrop | Completed | 2012 CO's |
| HUECO VISTA | Alabama | Dead End | Completed | 2012 CO's | THREADGILL | Dyer | McCombs | Completed | 2012 CO's |
| JOHN CUNNINGHAM | MLK | Terminus | Completed | 2012 CO's | TIGER EYE | Dyer | Jadestone | Completed | 2012 CO's |
| JUNCTION | Kelllogg | Gateway South | Completed | 2012 CO's | TIVOLI | Deer | Quail | Completed | 2012 CO's |
| KELLOGG | Winthrop | Tropicana | Completed | 2012 CO's | TRIUMPH | Salem | Dearborne | Completed | 2012 CO's |
| KETCHIKAN | Prince Edward | Newcastle | Completed | 2012 CO's | TROPICANA | Alcan | McCombs | Completed | 2012 CO's |
| KISKA | Prince Edward | Edmonton | Completed | 2012 CO's | TROUT | Wolverine | Dead End | Completed | 2012 CO's |
| LEVELLAND | Sweetwater | Port Arthur | Completed | 2012 CO's | UVALDE | Sun Valley | Junction | Completed | 2012 CO's |
| LLANO | Hueco Vista | Terminus | Completed | 2012 CO's | VANGUARD | Pickereel | Dead End | Completed | 2012 CO's |
| MACAW | McCombs | Blue Wing | Completed | 2012 CO's | VERBENA | Threadgill | McCombs | Completed | 2012 CO's |
| MACKEREL | Will Ruth | Dead End | Completed | 2012 CO's | VICEROY | Dearborne | Dead End | Completed | 2012 CO's |
| MATTERHORN | Rutherford | Glacier Peak | Completed | 2012 CO's | VICKSBURG | Threadgill | Sanders | Completed | 2012 CO's |
| MAUREEN | Stahala | Gabriel | Completed | 2012 CO's | WALDORF | McCombs | Alcan | Completed | 2012 CO's |
| MC COMBS SERVICE | Sarah Anne | Sun Valley | Completed | 2012 CO's | WINTHROP | Kenworthy | Thor | Completed | 2012 CO's |
| MENZIES | Winthrop | Sun Valley | Completed | 2012 CO's | WOODBERRY | Mc Combs | Dead End | Completed | 2012 CO's |
| MIDDLESBORO | Waverly | McCombs | Completed | 2012 CO's | WOODCHUCK | Bomarc | Dead End | Completed | 2012 CO's |
| MOUNT ETNA | Rutherford | Glacier Peak | Completed | 2012 CO's | YELLOWSTONE | Tropicana | Blythe | Completed | 2012 CO's |
| MOUNT OLYMPUS | Joe Herrera | Glacier Peak | Completed | 2012 CO's | YOSEMITE | Zion | Old Spanish Trail | Completed | 2012 CO's |
| MOUNT SAN BERDU | Joe Herrera | Alps | Completed | 2012 CO's | ZEUS | Nike | Snark | Completed | 2012 CO's |
| MURPHY | Salem | Sean Haggerty | Completed | 2012 CO's | ZION | Alabama | Gran Quivera | Completed | 2012 CO's |
| NIKE | Sidewinder | Dead End | Completed | 2012 CO's | MCCOMBS | Dyer | Railroad | Completed | Arterials |
| OLAN | Fairfax | Roanoak | Completed | 2012 CO's | RAILROAD | Loop 375 | US 54 | Completed | Arterials |
| OLD SPANISH TRAIL | Zion | Dead End | Completed | 2012 CO's | | | | | |

**Sections of Mount Etna, Mount Olympus, Matterhorn, and Mount San Berdu cross into District 2*
**Railroad is an arterial program street-section crosses into District 2*

District 5 - Includes 2012 Street CIP; and Arterial Program

2 Completed

| Location | From | To | Status | Program |
|---------------|----------|--------------|-----------|-----------|
| LEE | Montwood | Pebble Hills | Completed | 2012 CO's |
| GEORGE DIETER | Montana | Montwood | Completed | Arterials |

**George Dieter is an arterial program street –section crosses into District 3*

District 6 - Includes 2012 Street CIP; and Arterial Program

10 Completed

| Location | From | To | Status | Program |
|---------------|---------------|-------------|-----------|-----------|
| PULLMAN D | Henry Brennan | Rojas | Completed | 2012 CO's |
| DORSET | Coventry | Dead End | Completed | 2012 CO's |
| ONATE | Candelaria | Dead End | Completed | 2012 CO's |
| SANTA ROSALIA | Southside | Guadalajara | Completed | 2012 CO's |
| RENO | Southside | Guadalajara | Completed | 2012 CO's |
| NEVAREZ A | Inglewood | Skylight | Completed | 2012 CO's |
| GOLONDRINA | Buena Park | Buena Park | Completed | 2012 CO's |
| GUADALAJARA | Singh | Reno | Completed | 2012 CO's |
| LONE STAR | Socorro | Padilla | Completed | 2012 CO's |
| ROJAS | George Dieter | Don Haskins | Completed | Arterials |

**Sections of Rojas is an Arterial Program street – section crosses into District 7*

District 7 - Includes 2012 Street CIP; and Arterial Program

63 Completed

| Location | From | To | Status | Program | Location | From | To | Status | Program |
|---------------|--------------|---------------|-----------|-----------|---------------|---------------|---------------|-----------|-----------|
| ALCAZAR | Lomaland | Dead End | Completed | 2012 CO's | LEE TREVINO | Gateway East | Yermoland | Completed | 2012 CO's |
| ALGERITA | Riverside | Hickory | Completed | 2012 CO's | LILAC | Carolina | Montecito | Completed | 2012 CO's |
| ALGIERS | Fir | Album | Completed | 2012 CO's | LOMALAND | Pellicano | Gateway East | Completed | 2012 CO's |
| ALLEN BRADLEY | James Watt | Wilkenson | Completed | 2012 CO's | MAZATLAN | Hunter | Ladera | Completed | 2012 CO's |
| AMUR | Danube | Arboleda | Completed | 2012 CO's | MONACO | Montwood | Woodside | Completed | 2012 CO's |
| ARAQUAIA | Arboleda | Dead End | Completed | 2012 CO's | MONTERREY | Giles | Yarbrough | Completed | 2012 CO's |
| ATKINSON | North Loop | Half Moon | Completed | 2012 CO's | NEW HAVEN | Lasso | Roseway | Completed | 2012 CO's |
| BORRETT | Wells | Dead End | Completed | 2012 CO's | NEWLAND | Stanley | Atwood | Completed | 2012 CO's |
| BURGESS | Yermoland | Courtland | Completed | 2012 CO's | POLVO | Ron Quillo | Dead End | Completed | 2012 CO's |
| BURNHAM | Stanley | Lomaland | Completed | 2012 CO's | RALPHEENE | Williamette | Yermoland | Completed | 2012 CO's |
| CAPELLO | Blacks | McCamey | Completed | 2012 CO's | RIO ARRIBA | Pedernales | Link | Completed | 2012 CO's |
| CHRISTY | Williamette | Yermoland | Completed | 2012 CO's | ROJAS | Pendale | George Dieter | Completed | 2012 CO's |
| CORK | Album | Zanzibar | Completed | 2012 CO's | ROSEMARY | San Jose | Wenda | Completed | 2012 CO's |
| COSMOS | McRae | Debbie | Completed | 2012 CO's | SAN PAULO | La Paz | Yarbrough | Completed | 2012 CO's |
| DALE DOUGLAS | Bob Mitchell | Vista del Sol | Completed | 2012 CO's | SANTA BARBARA | Mazatlan | Hacienda | Completed | 2012 CO's |
| EMERSON | Heid | North Loop | Completed | 2012 CO's | SANTA MARIA | Giles | Dead End | Completed | 2012 CO's |
| ESCADRILLE | Fray | Lafayette | Completed | 2012 CO's | SANTA MONICA | Giles | Venado | Completed | 2012 CO's |
| FINITA | Whittier | Alameda | Completed | 2012 CO's | SONORA | Veracruz | Dead End | Completed | 2012 CO's |
| FRANCINE | Williamette | Yermoland | Completed | 2012 CO's | SUMATRA | Ceylon | Album | Completed | 2012 CO's |
| FRAY | Williamette | Dead End | Completed | 2012 CO's | TAHITI | Heather | Bermuda | Completed | 2012 CO's |
| GALLAGHER | Heid | Mauer | Completed | 2012 CO's | TOMWOOD | Sumac | Trawood | Completed | 2012 CO's |
| GUAYMAS | Taxco | Corozal | Completed | 2012 CO's | TRANQUILO | Yarbrough | Dead End | Completed | 2012 CO's |
| HACIENDA | Hunter | Ameca | Completed | 2012 CO's | VAN HASELEN | Lasso | Pendale | Completed | 2012 CO's |
| HALF MOON | North Loop | North Loop | Completed | 2012 CO's | VENADO | Ranchland CDS | San Paulo | Completed | 2012 CO's |
| HAROLD | Starr | Dead End | Completed | 2012 CO's | VERACRUZ | Ladera | Giles | Completed | 2012 CO's |
| HERMOSILLO | Hunter | Yarbrough | Completed | 2012 CO's | VISTA LOMAS | Vista De Oro | Vista del Sol | Completed | 2012 CO's |
| HONOLULU | Montwood | Leewood | Completed | 2012 CO's | VISTA REAL | Trawood | Janway | Completed | 2012 CO's |
| INDEPENDENCE | Yarbrough | Whittier | Completed | 2012 CO's | WENDA | Franklin | San Jose | Completed | 2012 CO's |
| LA GENTE | Morelia | Dead End | Completed | 2012 CO's | YARBROUGH | North Loop | Alameda | Completed | 2012 CO's |
| LA PALOMA | Valley View | Valley View | Completed | 2012 CO's | ROJAS | George Dieter | Don Haskins | Completed | Arterials |
| LA PAZ | Corozal | Dead End | Completed | 2012 CO's | YARBROUGH | Montana | Cesar Chaves | Completed | Arterials |
| LADERA | Monterrey | Carolina | Completed | 2012 CO's | | | | | |

**Sections of Rojas is an Arterial Program street – section crosses into District 6*

**Yarbrough is an arterial program street –section crosses into District 3*

District 8 - Includes 2012 Street CIP; and Arterial Program

57 Completed, 2 In Progress

| Location | From | To | Status | Program | Location | From | To | Status | Program |
|---------------|---------------|---------------|-----------|-----------|--------------|----------------|--------------|---------------------|-----------|
| AVILA | Lombardy | Avila | Completed | 2012 CO's | KINGSWOOD | Silverbell | Dead End | Completed | 2012 CO's |
| BALLERINA | Sunset | Dead End | Completed | 2012 CO's | LAREDO | Boone | Dead End | Completed | 2012 CO's |
| BEL MAR | Fiesta | Cabrillo | Completed | 2012 CO's | LESLIE WARD | Boy Scout | Dead End | Completed | 2012 CO's |
| BELTON | Monarch | De Leon | Completed | 2012 CO's | LINDEN | Alameda | Dunne | Completed | 2012 CO's |
| BENEDICT | Perth | Hookheath | Completed | 2012 CO's | MARDI GRAS | Carousel | Dad End | Completed | 2012 CO's |
| BLACKSTONE | Roxbury | Frontera | Completed | 2012 CO's | MARTINEZ | Delta | Laredo | Completed | 2012 CO's |
| BRIARWOOD | Coeur D Alene | Sunset | Completed | 2012 CO's | MEADOWLARK | Vist Del Monte | Rosinante | Completed | 2012 CO's |
| CASTILE | Belton | Marcena | Completed | 2012 CO's | MONTOYA | Country Club | Medowlark | Completed | 2012 CO's |
| CHARL ANN | Shorty | Sunset | Completed | 2012 CO's | OVERLAND | Cotton | Campbell | Completed | 2012 CO's |
| CIRCUS | Mardi Gras | Dead End | Completed | 2012 CO's | PACIFIC | Hidden | Doniphan | Completed | 2012 CO's |
| COEUR D ALENE | Olmos | Coeur D Alene | Completed | 2012 CO's | PALO VERDE | Maguey | Rio Flor | Completed | 2012 CO's |
| COLINA ALTA | Fountain | Dead End | Completed | 2012 CO's | PERTH | Riverbend | Benedict | Completed | 2012 CO's |
| COLUMBINE | Country Club | Camino Real | Completed | 2012 CO's | POPLAR | Pershing | Missouri | Completed | 2012 CO's |
| COMANCHE | Tobin | Cortez | Completed | 2012 CO's | POPLAR | Grant | School gates | Completed | 2012 CO's |
| CORTO | Yandell | Prospect | Completed | 2012 CO's | ROSEWOOD | Arizona | Missouri | Completed | 2012 CO's |
| CORVENA | Swan | Fair Lawn | Completed | 2012 CO's | RUBIN | Suncrest | Corousel | Completed | 2012 CO's |
| DALLAS | San Antonio | Dead End | Completed | 2012 CO's | SAINT VRAIN | Olive | Dead End | Completed | 2012 CO's |
| DETROIT | Murchison | Arizona | Completed | 2012 CO's | SANTA FE | I-10 | Main | Completed | 2012 CO's |
| DOLAN | Paisano | Sagrado | Completed | 2012 CO's | SILVERBELL | Kingswood | Dead End | Completed | 2012 CO's |
| DUNNE | Washington | Dead End | Completed | 2012 CO's | THRUSH | Warbler | Crane | Completed | 2012 CO's |
| EIGHTH | Oregon | Ochoa | Completed | 2012 CO's | VISTA GRANDE | Country Club | Country Club | Completed | 2012 CO's |
| FINDLEY | San Antonio | Dead End | Completed | 2012 CO's | WESTCITY | Eubank | Waymore | Completed | 2012 CO's |
| FOUNTAIN | Snow Heights | Mesa | Completed | 2012 CO's | WESTVIEW | Heath | Belton | Completed | 2012 CO's |
| FOURTH | Park | Coles | Completed | 2012 CO's | BIRCH | Grant | Wyoming | Completed | 2012 CO's |
| FRANCIS | Flower | Terminus | Completed | 2012 CO's | CALIFORNIA | Mesa | Los Angeles | Completed | 2012 CO's |
| FRANKLIN | I-10 | Durango | Completed | 2012 CO's | NINTH | Park | Campbell | Completed | 2012 CO's |
| GEORGIA | Cliff | Dead End | Completed | 2012 CO's | RIVER BEND | Frontera | Sunset | Pending CID Project | 2012 CO's |
| HEISIG | Prospect | Sun Bowl | Completed | 2012 CO's | UPSON | Heisig | Stewart | Pending PSB Project | 2012 CO's |
| HOOKEATH | Roxbury | Benedict | Completed | 2012 CO's | RESLER | High Ridge | White Cliffs | Completed | Arterials |
| J C MACHUCA | Sunland Park | Dead End | Completed | 2012 CO's | | | | | |

*Resler is an arterial program street –section of this is in District 1

Collector Street Resurfacing Program

List presented on 1/7/20 for
FY 20 (half), 21, 22

List presented on 10/27/20 for
FY 23



Collector Roads Paving Needs

- **Collectors are designed to move traffic between residential streets and arterial roadways; there are 160 Collector streets and 188 Arterial streets in our inventory, along with 5,769 Residential streets;**
- **The City through Title 15 collects an additional \$3M from Public Service Board Infrastructure Franchise Fee dedicated to Street Resurfacing:**
 - **\$3M used for a Collector Road resurfacing program**
- **Current program covers FY 20 (half), 21, 22, and 23**
- **Program began in Summer of 2020**

Program Candidates for a Collector Paving program for FY 21, FY 22, and FY 23

- Project streets selected based on the following:
 1. PCI Data from most recent pavement assessment – PCI's drive the selection criteria
 2. Utility Clearances – selected streets will be vetted with utility partners to ensure there are no water, gas, electric line issues that could cause them to be cut into within the next few years
 3. Completing Neighborhoods – where possible, candidates were selected near areas where the City has paved in the 2012 CO's, the Arterial Program, and the Residential paving program; selected sections of candidate streets are logical limits within the streets requiring pavement replacement

5 Completed, 1 In Progress

| Year | Dist. | Location | From | To |
|-------|-------|----------------|--------------|----------------|
| FY 20 | 4 | Rushing | Fairbanks | Salem |
| | 4 | Sun Valley | McCombs | Cross |
| FY 21 | 6 | Saul Kleinfeld | Gwen Evans | Zaragoza |
| | 3.5 | Edgemere | Aberdeen | Red Sails |
| FY 22 | 3.5 | Edgemere | Red Sails | George Dieter |
| | 1.8 | Belvidere | Mesa | Westwind |
| | 2 | Copia | Altura | Pershing |
| | 7 | Giles | Gateway East | Heid |
| FY 23 | 5,6 | Saul Kleinfeld | Gwen Evans | Pebble Hills |
| | 3,6,7 | Montwood | Lee Trevino | Saul Kleinfeld |

= COMPLETED PROJECTS

= IN PROGRESS

= PROGRAMMED

Rushing

FY 2020

Fairbanks to Salem

Red-Black – Proposed collector streets

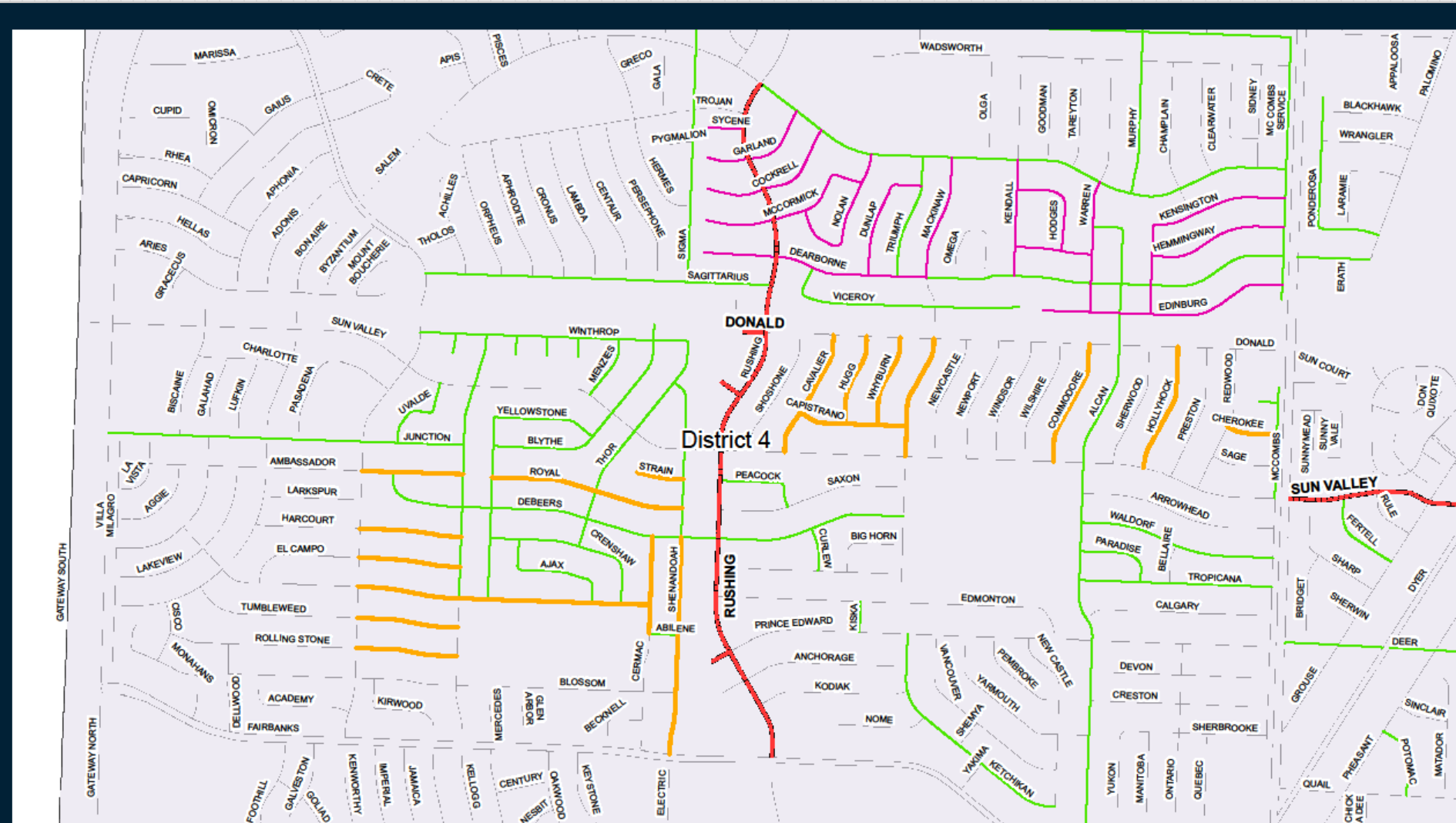
Magenta – Proposed residential streets FY21-22

Orange – Residential streets from the FY19-20 Program

Green – 2012 street CIP

Red – Arterial Program

Blue – TxDOT



Complete

Sun Valley FY 2020

McCombs to Cross

Red-Black – Proposed collector streets

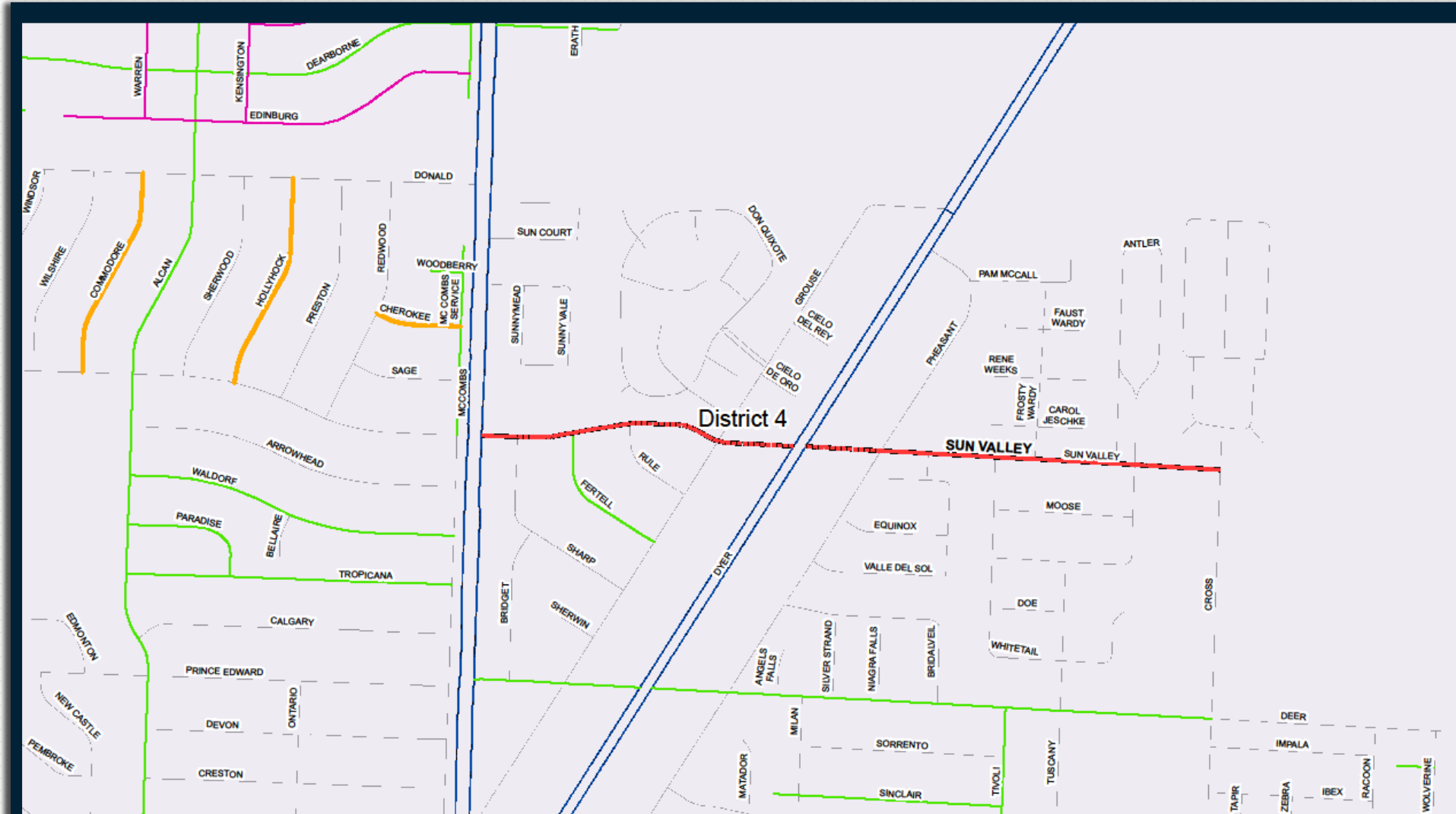
Magenta – Proposed residential streets FY21-22

Orange – Residential streets from the FY19-20 Program

Green – 2012 street CIP

Red – Arterial Program

Blue – TxDOT



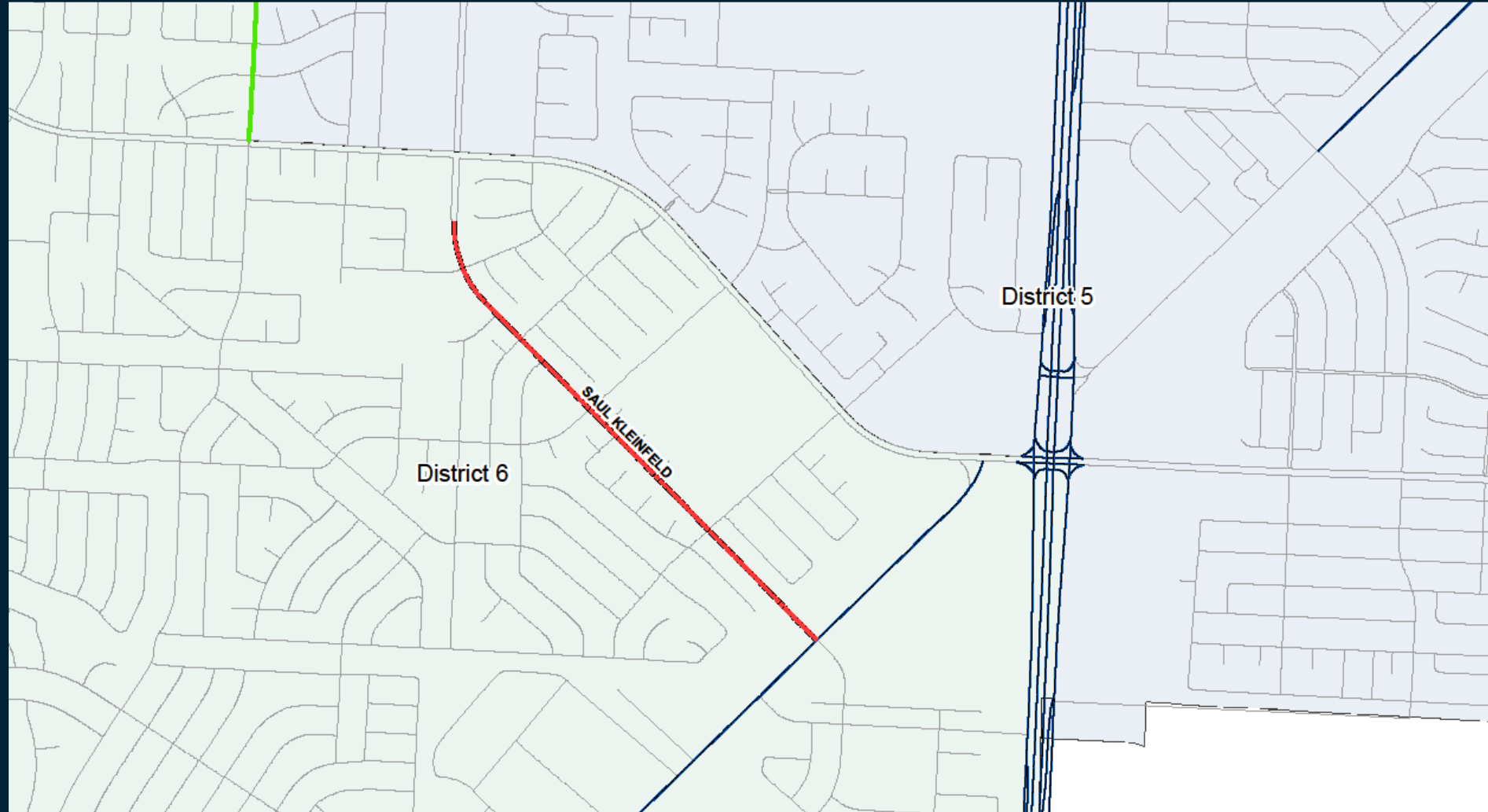
Complete

Saul Kleinfeld

FY 2021

Gwen Evans to
Zaragoza

- Red-Black** – Proposed collector streets
- Magenta** – Proposed residential streets FY21-22
- Orange** – Residential streets from the FY19-20 Program
- Green** – 2012 street CIP
- Red** – Arterial Program
- Blue** – TxDOT



Complete

Edgemere

FY 2021 - Aberdeen
to Red Sails

2022 - Red Sails to
George Dieter

Red-Black – Proposed collector
streets

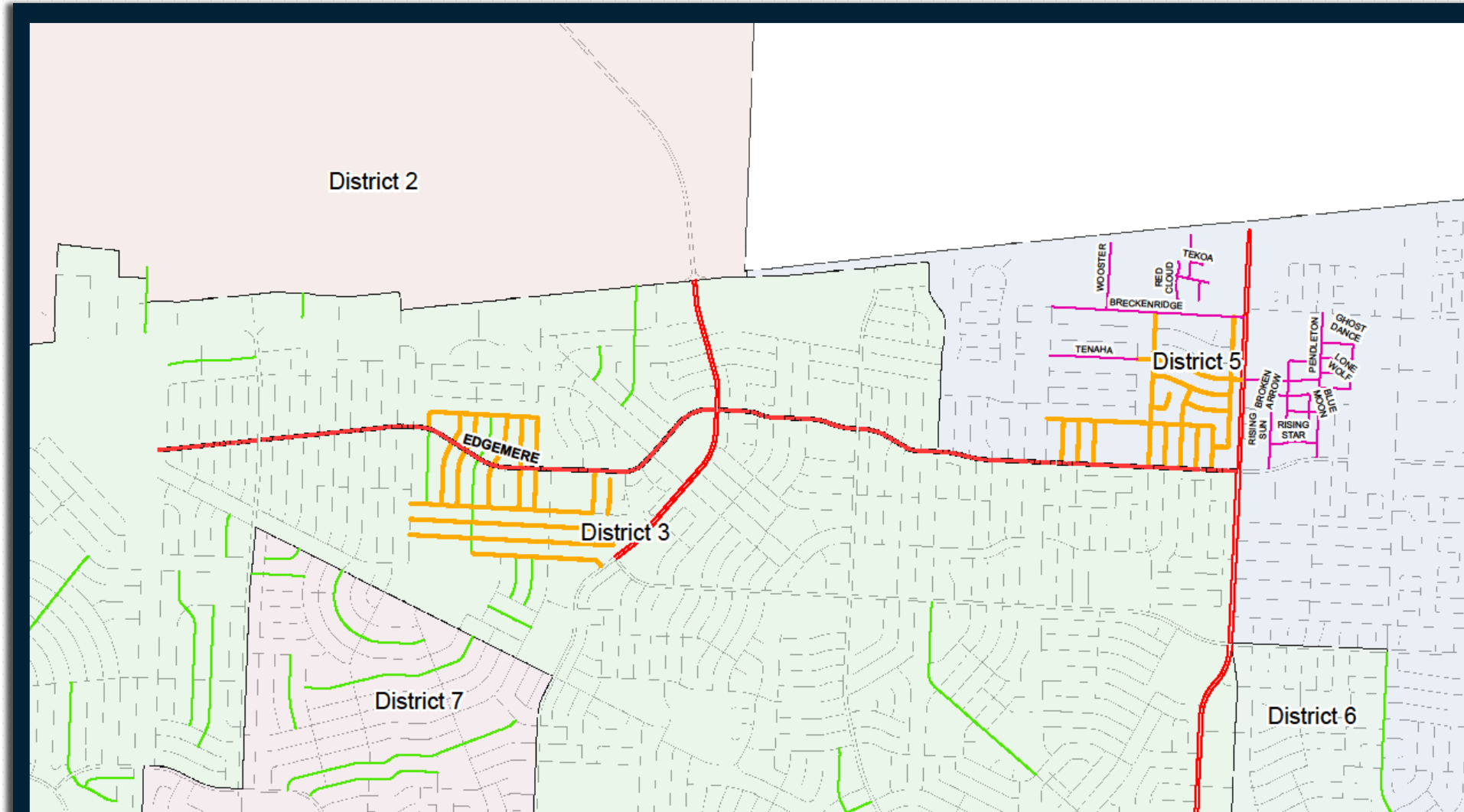
Magenta – Proposed residential
streets FY21-22

Orange – Residential streets from
the FY19-20 Program

Green – 2012 street CIP

Red – Arterial Program

Blue – TxDOT



Complete

Belvidere

FY 2022

Mesa to Westwind

Red-Black – Proposed collector streets

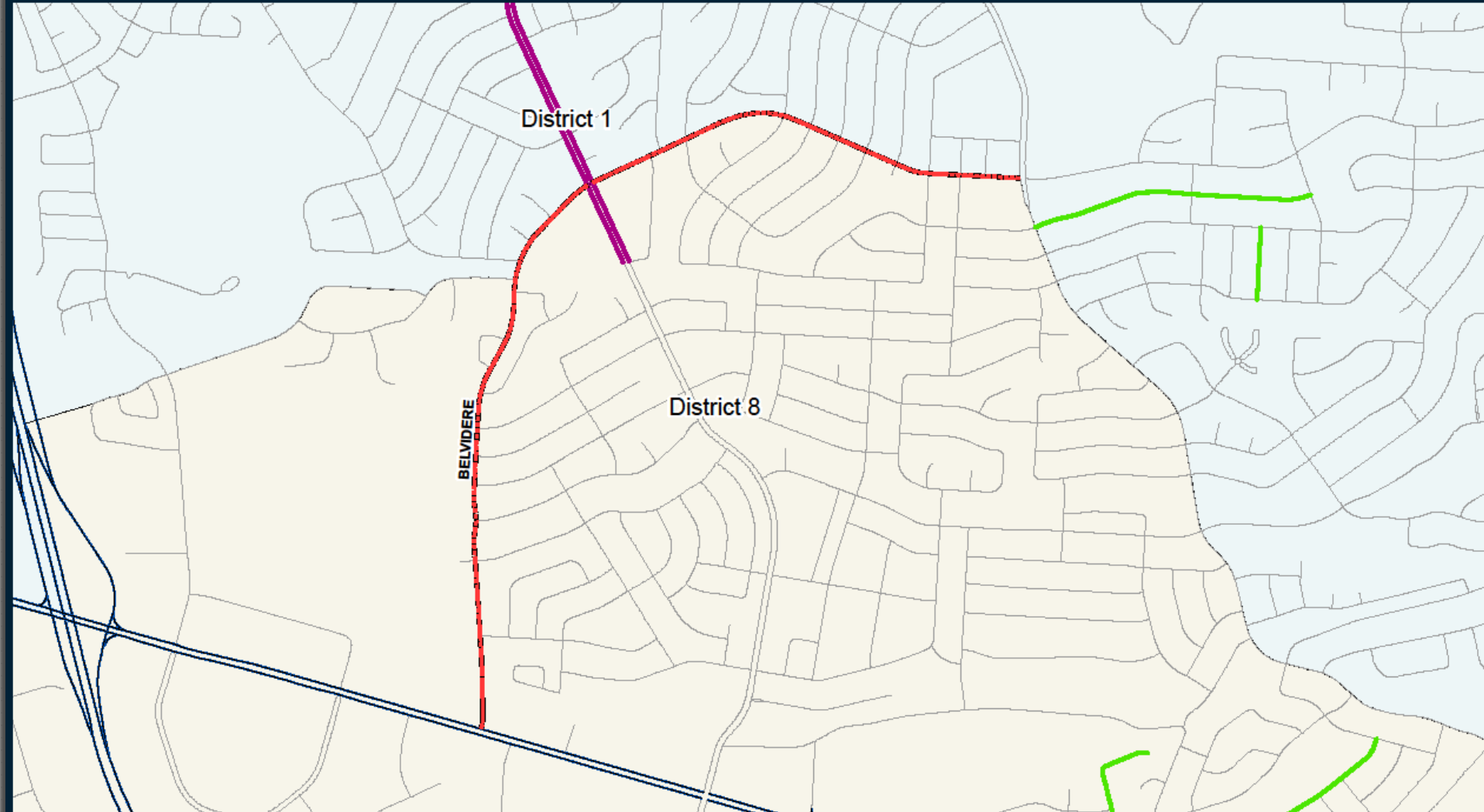
Magenta – Proposed residential streets FY21-22

Orange – Residential streets from the FY19-20 Program

Green – 2012 street CIP

Red – Arterial Program

Blue – TxDOT



Copia

FY 2022

Altura to Pershing

Red-Black – Proposed collector streets

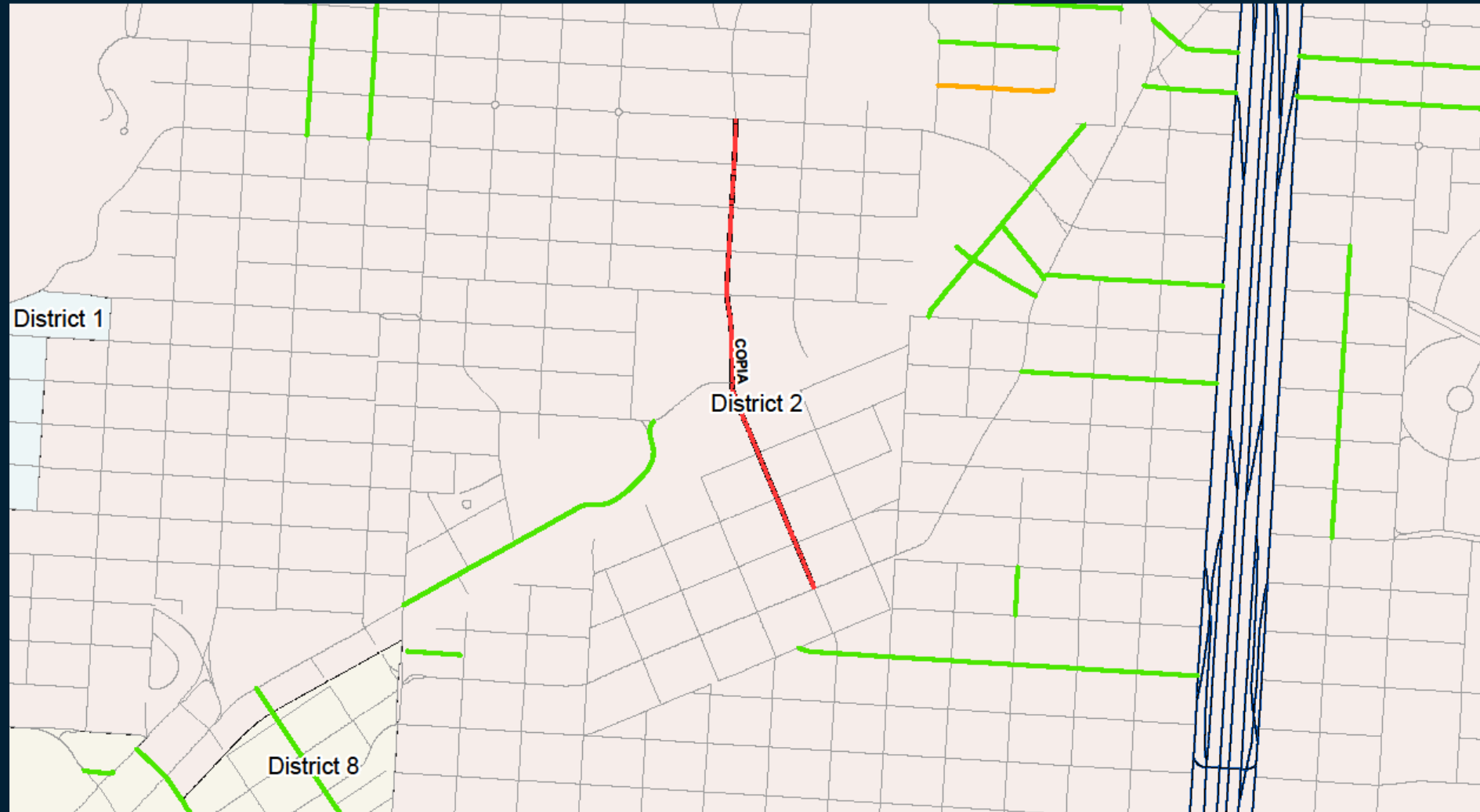
Magenta – Proposed residential streets FY21-22

Orange – Residential streets from the FY19-20 Program

Green – 2012 street CIP

Red – Arterial Program

Blue – TxDOT



In Progress

Giles

FY 2022

Gateway East to Heid

Red-Black – Proposed collector streets

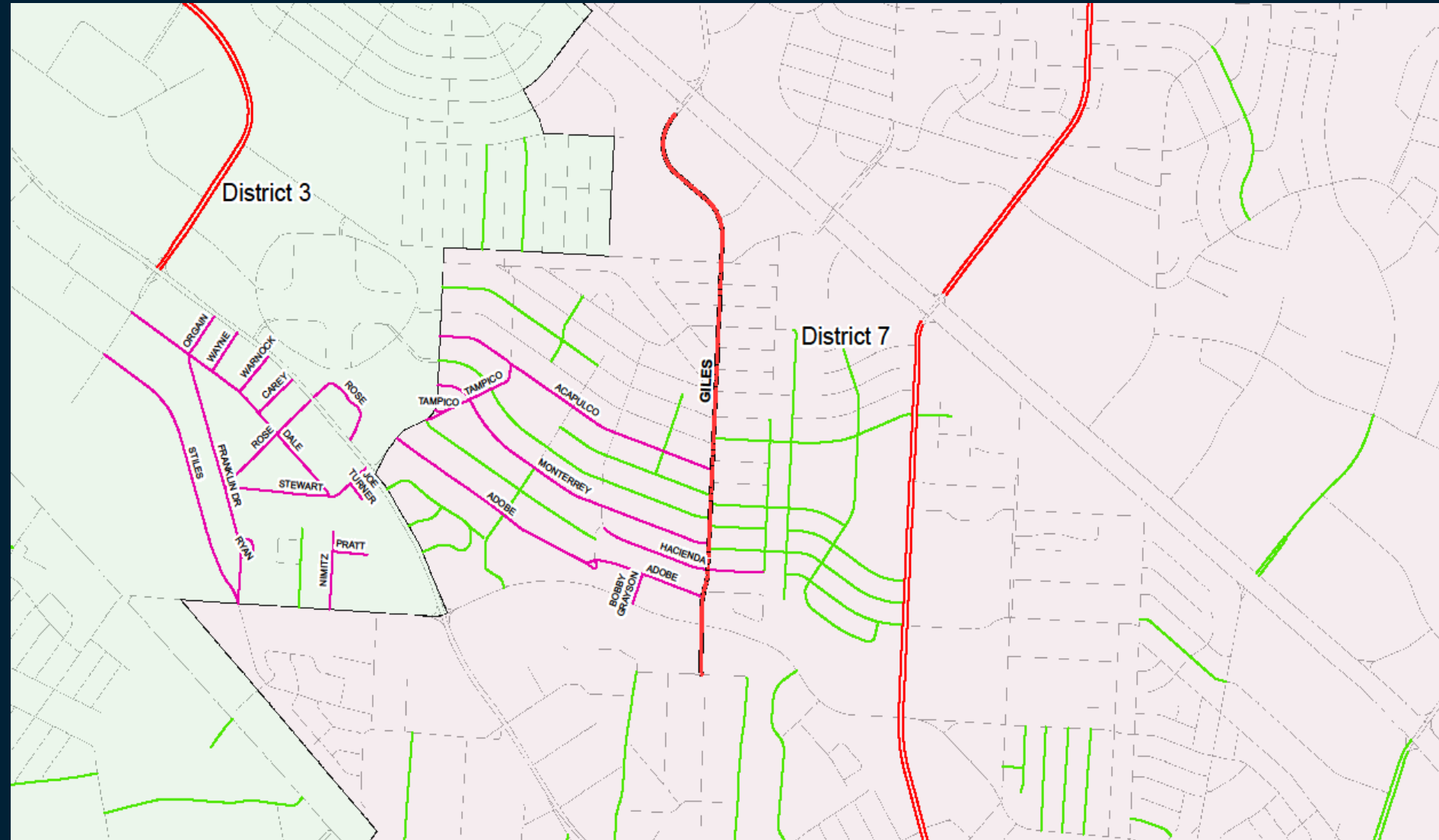
Magenta – Proposed residential streets FY21-22

Orange – Residential streets from the FY19-20 Program

Green – 2012 street CIP

Red – Arterial Program

Blue – TxDOT



Saul Kleinfield

FY 2023

Gwen Evans to Pebble Hills

Red-Black – Proposed collector streets

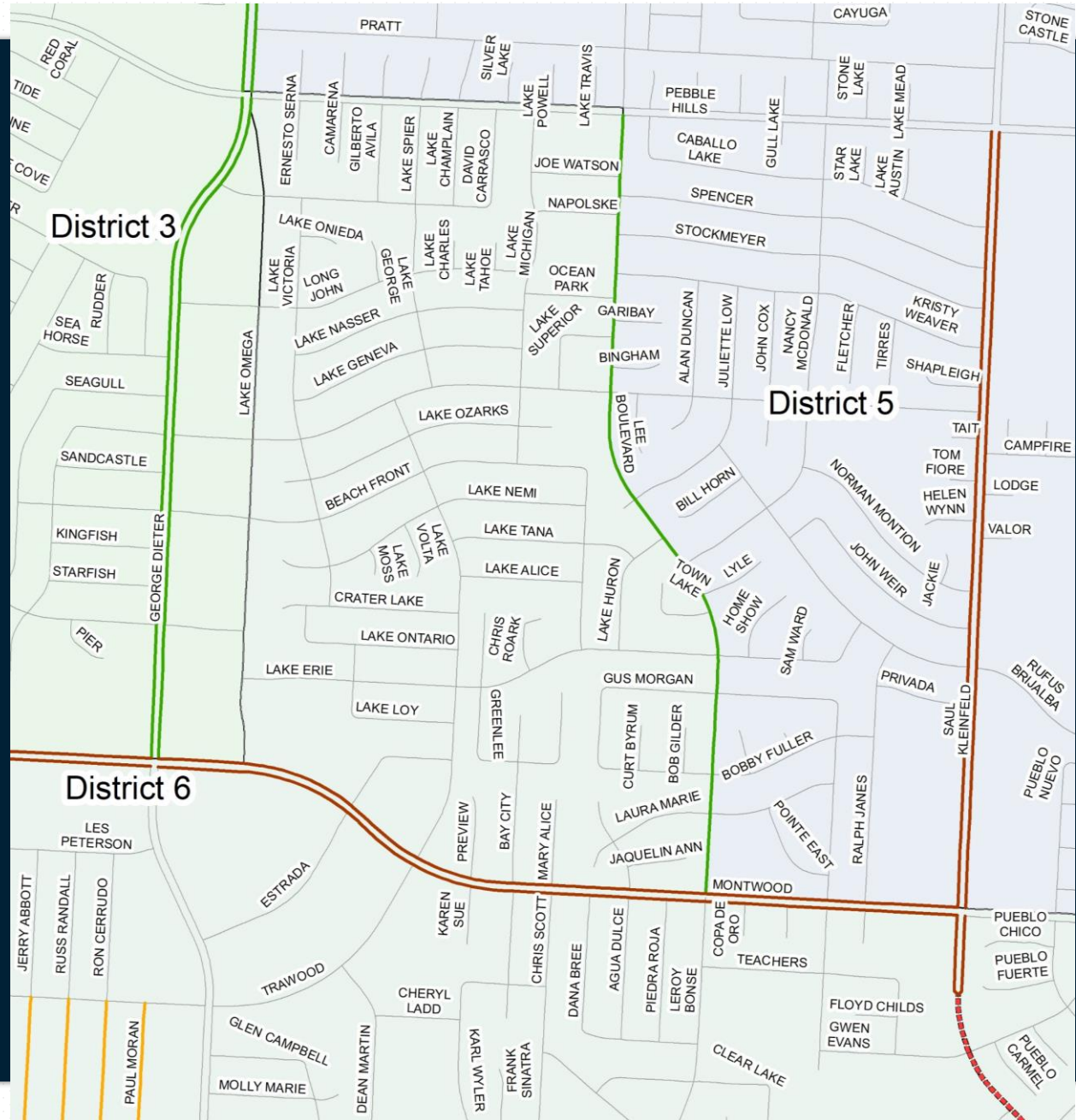
Magenta – Proposed residential streets FY21-22

Orange – Residential streets from the FY19-20 Program

Green – 2012 street CIP

Red – Arterial Program

Blue – TxDOT



Montwood

FY 2023

Lee Trevino to Saul Kleinfeld

Red-Black – Proposed collector streets

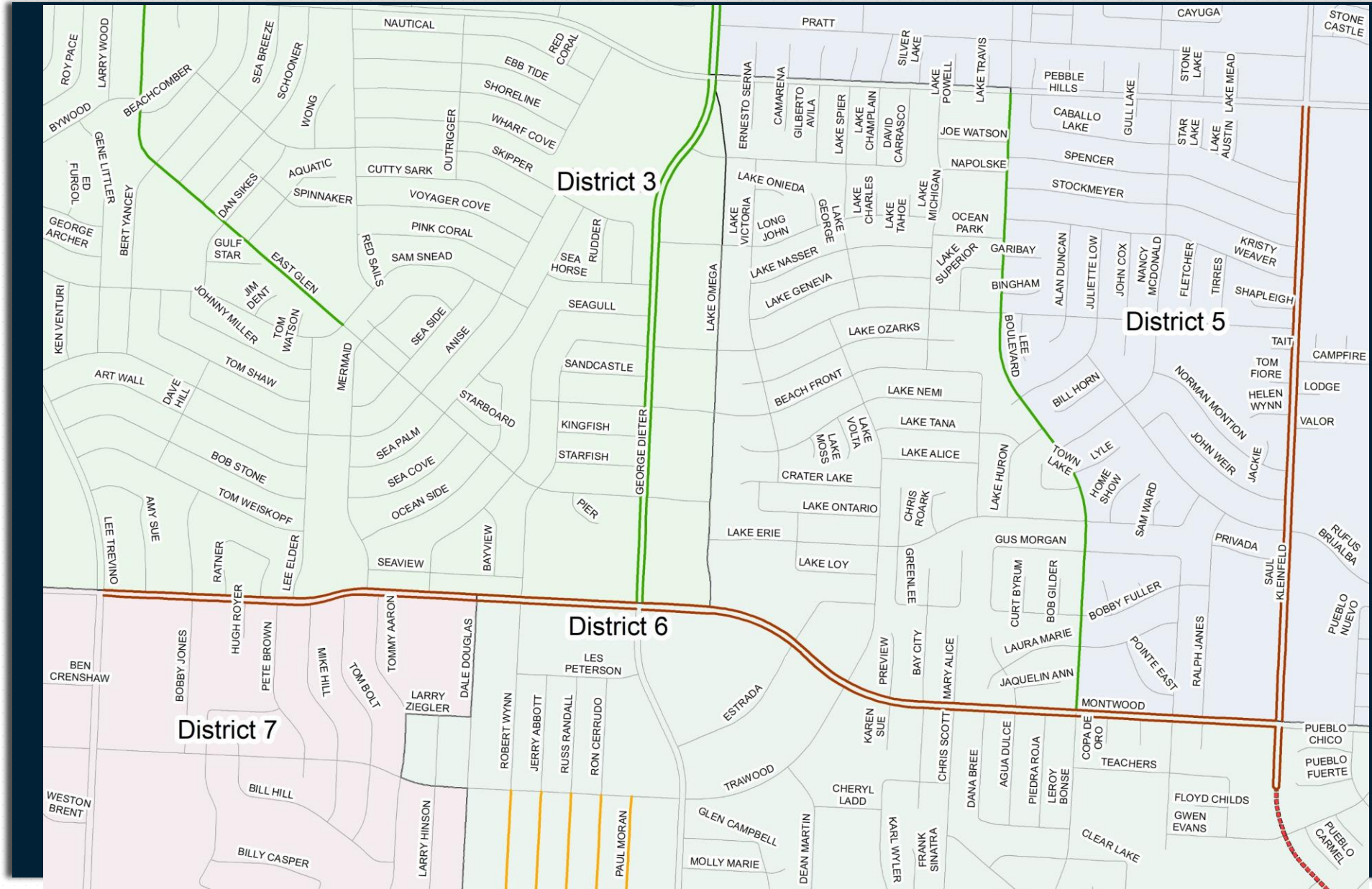
Magenta – Proposed residential streets FY21-22

Orange – Residential streets from the FY19-20 Program

Green – 2012 street CIP

Red – Arterial Program

Blue – TxDOT



Residential Street Resurfacing Program \$7 M Dedicated Funding

11-13-18 Approved 2 Year List – FY19/20

**Balance programmed for
FY 22**



FY 19/20 Residential Street Paving Plan – Completed in FY 2019

41 Completed Streets

| District | Location | From | To | Status | District | Location | From | To | Status |
|------------|------------|------------|------------|-----------|------------|---------------|-------------|------------|-----------|
| District 1 | BERKSHIRE | Brentwood | Waymore | Completed | District 3 | SUFFOLK | Castletown | Ballymote | Completed |
| District 1 | BUCKINGHAM | Canterbury | Stanton | Completed | District 3 | TYRONE | Castletown | Ballymote | Completed |
| District 1 | CANTERBURY | Stanton | Santa Rita | Completed | District 4 | AMBASSADOR | Kenworthy | Kellogg | Completed |
| District 1 | DARWOOD | Krupp | Waymore | Completed | District 4 | CAPISTRANO | Cavalier | Mackinaw | Completed |
| District 1 | DONNYBROOK | Okeefe | CDS | Completed | District 4 | CAVALIER | Donald | Sun Valley | Completed |
| District 1 | GREENWICH | Krupp | Berkshire | Completed | District 4 | CERMAC | Debeers | Abiline | Completed |
| District 1 | HAMPSHIRE | Wallington | Stanton | Completed | District 4 | CHEROKEE | Redwood | Mc Combs | Completed |
| District 1 | OKEEFE | Santa Rita | Bacerac | Completed | District 4 | COMMODORE | Donald | Sun Valley | Completed |
| District 1 | RIDGECREST | Canterbury | Park Hill | Completed | District 4 | EL CAMPO | Kenworthy | Kellogg | Completed |
| District 1 | STANTON | Canterbury | Okeefe | Completed | District 4 | HARCOURT | Kenworthy | Kellogg | Completed |
| District 1 | WAYMORE | Mesa | Stanton | Completed | District 4 | HOLLYHOCK | Donald | Sun Valley | Completed |
| District 3 | BALLYMOTE | Orkney | Karen | Completed | District 4 | HUGG | Donald | Capistrano | Completed |
| District 3 | BAYO | Orkney | Karen | Completed | District 4 | MACKINAW | Donald | Sun Valley | Completed |
| District 3 | BLACKWOOD | Cornwall | Yarbrough | Completed | District 4 | ROLLING STONE | Kenworthy | Kellogg | Completed |
| District 3 | CASTLETOWN | Edgemere | Limerick | Completed | District 4 | ROYAL | Yellowstone | Shenandoah | Completed |
| District 3 | DRUMOND | Castletown | Ballymote | Completed | District 4 | SHENANDOAH | Debeers | Fairbanks | Completed |
| District 3 | LAMPLITER | Ballymote | CDS | Completed | District 4 | STRAIN | Shenandoah | CDS | Completed |
| District 3 | LIMERICK | Castletown | Ballymote | Completed | District 4 | TROPICANA | Kenworthy | Cermac | Completed |
| District 3 | LORNE | Castletown | Ballymote | Completed | District 4 | TUMBLEWEED | Kenworthy | Kellogg | Completed |
| District 3 | LUELLA | Orkney | Karen | Completed | District 4 | WHYBURN | Donald | Capistrano | Completed |
| District 3 | SALLYBROOK | Edgemere | Ballymote | Completed | | | | | |

\$4.8 M Current Funding To Complete 36 Streets

| Dist | Location | From | To | Status | Dist | Location | From | To | Status |
|------|---------------|---------------|---------------|-------------|------|----------------|--------------|---------------|------------|
| 2 | CORTE DEL SOL | Mobile | CDS | Programmed | 6 | JACK CUPIT | Russ Randall | George Dieter | Programmed |
| 2 | MCKINLEY | Oklahoma | Piedras | Programmed | 6 | JERRY ABBOTT | Trawood | Bob Mitchell | Programmed |
| 2 | MOBILE | Copia | CDS | Programmed | 6 | PAUL MORAN | Trawood | Bunky Henry | Programmed |
| 2 | MOREHEAD | Nebraska | Alabama | Programmed | 6 | RON CERRUDO | Trawood | Bunky Henry | Programmed |
| 2 | NATIONS | Nebraska | Alabama | Programmed | 6 | RUSS RANDALL | Trawood | Bob Mitchell | Programmed |
| 2 | SACRAMENTO | Copia | Pollard | Programmed | 6 | TOM ULOZAS | Robert Wynn | George Dieter | Programmed |
| 2 | SAVANNAH | Stevens | Partello | Programmed | 7 | BORRETT | North Loop | Reindeer | Programmed |
| 5 | HICKMAN | Quintana | Edgemere | Programmed | 7 | CLIFFORD | Niles | Reindeer | Programmed |
| 5 | IVANHOE | Quintana | Edgemere | Programmed | 7 | CRESTWOOD | Park Haven | Drugan | Programmed |
| 5 | QUANAH | Quintana | Edgemere | Programmed | 7 | DELL HAVEN | Borett | Pinewood | Programmed |
| 5 | QUINTANA | Red Sails | Edgemere | Programmed | 7 | FOREST HAVEN | Borett | Pinewood | Programmed |
| 5 | RED HAWK | Spotted Horse | Proud Eagle | Programmed | 7 | PINEWOOD | Park Haven | Reigndeer | Programmed |
| 5 | RISNER | Quintana | Edgemere | Programmed | 7 | ROSE HAVEN | Borett | Pinewood | Programmed |
| 5 | SPOTTED HORSE | War Feather | Edgemere | Programmed | 7 | SAINT MARYS | North Loop | Lasso | Programmed |
| 5 | WAR ARROW | Quintana | Edgemere | Programmed | 7 | SAINT MATTHEWS | North Loop | Park Haven | Programmed |
| 5 | WAR FEATHER | Running Deer | Proud Eagle | Programmed | 8 | MAGOFFIN | Eucalyptus | Piedras | Programmed |
| 6 | BOB MITCHELL | Robert Wynn | George Dieter | Programmed | 8 | PERA | Magoffin | Alameda | Programmed |
| 6 | GENE SARAZEN | Robert Wynn | George Dieter | In Progress | 8 | SAN ANTONIO | Piedras | Copia CDS | Programmed |

Additional Funding \$3.6 M to Complete 27 Streets

| Dist | Location | From | To | Status | Dist | Location | From | To | Status |
|------|--------------|--------------|---------------|-------------|------|------------|---------------|--------------|------------|
| 2 | IDALIA | Copia | Pollard | Programmed | 7 | DRUGAN | Borrett | Moorehead | Programmed |
| 2 | JACKSON | Oklahoma | Raynor | Programmed | 7 | GLEN HAVEN | Borett | Saint Marys | Programmed |
| 2 | PORTER | Alabama CDS | Pollard | Programmed | 7 | LYNN HAVEN | Borett | Saint Marys | Programmed |
| 5 | PEACEPIPE | Running Deer | CDS | Programmed | 7 | MOORELAND | Park Haven | Reindeer | Programmed |
| 5 | PROUD EAGLE | Brekenridge | Quintana | Programmed | 7 | MORERAS | Naranjos | Naranjos | Programmed |
| 5 | RUNNING DEER | Brekenridge | Edgemere | Programmed | 7 | NARANJOS | Saint Marys | Reindeer | Programmed |
| 5 | TENAHA | Hazel Time | George Dieter | Programmed | 7 | PARK HAVEN | Borrett | Naranjos CDS | Programmed |
| 6 | BILLIE MARIE | Gene Sarazen | Robert Wynn | In Progress | 7 | REINDEER | Borrett | Naranjos CDS | Programmed |
| 6 | BUNKY HENRY | Russ Randall | George Dieter | Programmed | 8 | BOONE | Alameda | Rivera | Programmed |
| 6 | FRED MARTI | Billie Marie | George Dieter | In Progress | 8 | CENTRAL | Paisano | Piedras | Programmed |
| 6 | JAMES GRANT | Robert Wynn | George Dieter | Programmed | 8 | CYPRESS | Piedras | Paisano | Programmed |
| 6 | RANDY PETRI | Billie Marie | George Dieter | In Progress | 8 | HAMMETT | Frutas | Alameda | Programmed |
| 6 | ROBERT WYNN | Trawood | George Dieter | In Progress | 8 | RIVERA | Gateway North | Boone | Programmed |
| 6 | STEVE SPRAY | James Grant | Robert Wynn | In Progress | | | | | |

\$7 M Annual Dedicated Residential Resurfacing Program

List presented to City Council 1/7/20 for FY 2021 and FY 2022

Programmed FY 22/23/24

\$14 M – 2 Year Programmed Allocations

FY 22: **\$5.6 M**
 FY 23: **\$7 M**
 FY 24: **\$1.4 M**



Residential Resurfacing Candidates for FY 23 – FY 24

Selection Criteria

- Street Maintenance Fee proposed in future FY 23 and FY 24 budgets will include allocations of \$7,000,000 for residential streets (recurring); current street project candidates were selected for the next two project years (23-24)
- PCI data shows a significant need requiring a systemic approach
- Project streets included emphasis on the following:
 1. **PCI Data** from the recent assessment – new PCI's drive the selection criteria
 2. **Utility Clearances** – selected streets were vetted with utility partners to ensure there are no water, gas, electric line issues that could cause them to be cut into within the next few years
 3. **Geographic Locations** – where feasible, candidates were selected near areas where the City has paved in the 2012 CO's, the Arterial Program, and the Residential paving program to complete neighborhoods
- Streets identified through PCI were cross-checked against streets requested in the budget process, streets on the unfunded CIP list, and streets included in public initiated service requests

110 Programmed Streets

FY
22/23/24
(Programmed)

\$14 M

| Dist | Location | From | To | Dist | Location | From | To | Dist | Location | From | To |
|------|-------------|-----------|---------------|------|-------------|--------------|---------------|------|--------------|------------|---------------|
| 1 | BALTIMORE | Florence | Piedmont | 2 | TYLER | Elm | Pollard | 4 | EDINBURG | McCombs | W Dead End |
| 1 | CAMPBELL | Wellesley | Kerby | 2 | VOLCANIC | Alabama | Gateway South | 4 | GARLAND | Salem | W Dead End |
| 1 | CHAPARRAL | Turney | Mesita | 3 | CAREY | Dale | North Loop | 4 | HEMMINGWAY | Kensington | McCombs |
| 1 | CHARIOT | Mesita | N Dead End | 3 | DALE | Dodge | Stewart | 4 | HODGES | Kendall | Norwood |
| 1 | DARWOOD | Waymore | O Keefe | 3 | FRANKLIN DR | Dale | Carolina | 4 | KENDALL | Salem | Dearborne |
| 1 | FLORENCE | Gregory | Robinson | 3 | GLARDON | Green Valley | Green Valley | 4 | KENSINGTON | Edinburgh | McCombs |
| 1 | HIXSON | Mesita | Alethea Park | 3 | JOE TURNER | Stewart | E Dead End | 4 | MACKINAW | Salem | Dearborne |
| 1 | KERN | Mesa | Stanton | 3 | NIMITZ | Carolina | N Dead End | 4 | MCCORMICK | Nolan | W Dead End |
| 1 | MESITA | Mesa | Stanton | 3 | ORGAIN | North Loop | Dale | 4 | NOLAN | McCormick | Salem |
| 1 | MISSISSIPPI | Florence | Rowena | 3 | PRATT | Nimitz | E Dead End | 4 | NORWOOD | Kendall | Warren |
| 1 | MORROW | Stockwell | Galloway | 3 | ROSE | Franklin | North Loop | 4 | SYCENE | Rushing | W Dead End |
| 1 | NYE | Baltimore | Cincinatti | 3 | RYAN | Franklin | Franklin | 4 | WARREN | Salem | Edinburgh |
| 1 | OCHOA | Baltimore | Cincinatti | 3 | STEWART | Franklin | North Loop | 5 | BLUE MOON | Rising Sun | Dead End |
| 1 | STOCKWELL | Moore | Piedmont | 3 | STILES | Dodge | Carolina | 5 | BRECKENRIDGE | Red Sails | George Dieter |
| 1 | WHITAKER | Stockwell | Galloway | 3 | WARNOCK | North Loop | Dale | 5 | BROKEN ARROW | N Dead End | S Dead End |
| 2 | ATLAS | Alabama | Gateway South | 3 | WAYNE | North Loop | Dale | 5 | CHICKASAW | Pendleton | Broken Bow |
| 2 | POLK | Russell | Pollard | 4 | COCKRELL | Salem | Dead End | 5 | GHOST DANCE | Pendleton | Pendleton |
| 2 | TAYLOR | Piedras | Copia | 4 | DEARBORNE | Mackinaw | W Dead End | 5 | KACHINA | W Dead End | E Dead End |
| 2 | TITANIC | Alabama | Gateway South | 4 | DUNLAP | Deadborne | Triumph | 5 | LONE WOLF | Pendleton | Pendleton |

110 Programmed Streets (Cont'd)

FY
22/23/24
(Programmed)

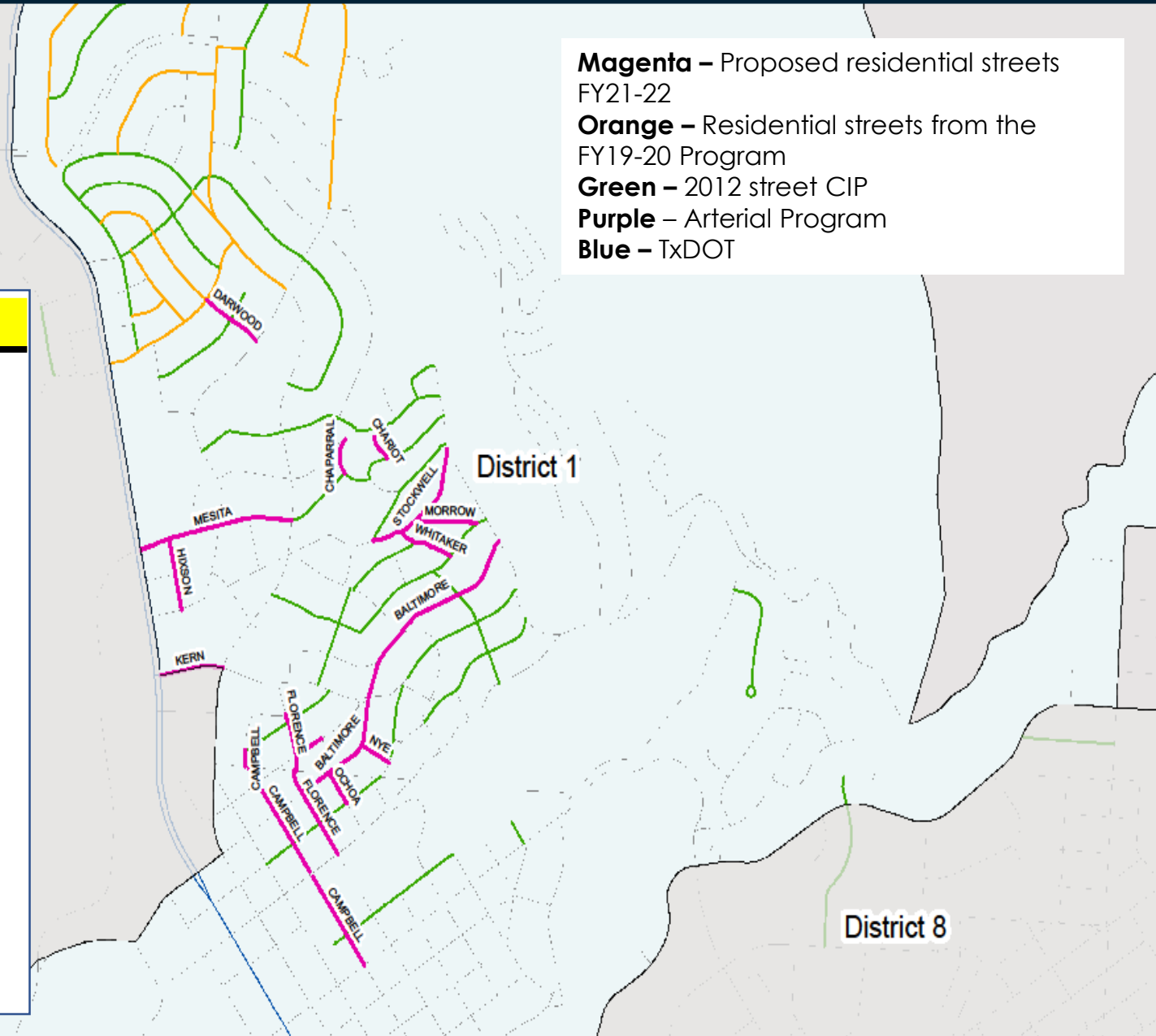
\$14 M

| Dist | Location | From | To | Dist | Location | From | To | Dist | Location | From | To |
|------|---------------|---------------|------------|------|---------------|------------|--------------|------|-------------|----------|---------------|
| 5 | PENDLETON | Turner | Edgemere | 6 | HANCOCK | Juno | Presa | 7 | FRANKLIN DR | Carolina | North Loop |
| 5 | RED CLOUD | Breckenridge | N Dead End | 6 | IRMA | Old Pueblo | E Dead End | 7 | HACIENDA | Ameca | Santa Barbara |
| 5 | RISING STAR | Rising Sun | Pendleton | 6 | JUNO | Leonardo | Cana | 7 | LA SENDA | Milton | N Dead End |
| 5 | RISING SUN | Tenaha | Edgemere | 6 | LEONARDO | Juno | Roseway | 7 | MONTERREY | Hunter | Giles |
| 5 | SMOKE SIGNAL | Kachina | N Dead End | 6 | LOLITA | Valdivez | S Dead End | 7 | OCTUBRE | Crow | Lomaland |
| 5 | SOARING EAGLE | Kachina | S Dead End | 6 | MORALES | Juno | W Dead End | 7 | SEPTIEMBRE | Mosswood | Montwood |
| 5 | STILL WATER | Broken Arrow | Pendleton | 6 | OLD PUEBLO | Zaragoza | Alameda | 7 | TAMPICO | Hacienda | Acapulco |
| 5 | TEKOA | Smoke Signal | E Dead End | 6 | PALLA | Hancock | Cana | 8 | ARIZONA | Ochoa | Saint Vrain |
| 5 | TENAHA | George Dieter | Pendleton | 6 | PRESA | Roseway | Alameda | 8 | CALIFORNIA | Ochoa | Saint Vrain |
| 5 | WOOSTER | Breckenridge | N Dead End | 6 | SAINT ANTHONY | Candelaria | Juno | 8 | CLIFF | Ochoa | Saint Vrain |
| 6 | BENITO | Candelaria | W Dead End | 6 | SAN FERNANDO | Candelaria | Juno | 8 | NEVADA | Ochoa | Saint Vrain |
| 6 | CANA | Juno | Alameda | 6 | SAN PEDRO | Gaspar | E Dead End | 8 | OCHOA | Wyoming | N Dead End |
| 6 | CANANEA | Alameda | W Dead End | 6 | SANDOVAL | Candelaria | San Fernando | 8 | RIVER | Ochoa | Saint Vrain |
| 6 | CANDELARIA | Roseway | Alameda | 6 | VALDIVIEZ | Candelaria | Juno | 8 | SAINT VRAIN | Cliff | Missouri |
| 6 | CERES | Hancock | Cana | 7 | ACAPULCO | Hunter | Giles | 8 | VIRGINIA | Schuster | Missouri |
| 6 | COLINA | Alameda | N Dead End | 7 | ADOBE | Hunter | Giles | 8 | WYOMING | Ochoa | Saint Vrain |
| 6 | COLMENERO | Candelaria | W Dead End | 7 | BOBBY GRAYSON | Adobe | Carolina | 8 | YANDELL | Ochoa | Saint Vrain |
| 6 | GASPAR | Alameda | Socorro | 7 | CROW | Septiembre | Janway | | | | |

District 1

Programmed for
FY 22/23/24

| Dist | Location | From | To |
|------|-------------|-----------|--------------|
| 1 | BALTIMORE | Florence | Piedmont |
| 1 | CAMPBELL | Wellesly | Kerby |
| 1 | CHAPARRAL | Turney | Mesita |
| 1 | CHARIOT | Mesita | CDS |
| 1 | DARWOOD | Waymore | O'Keefe |
| 1 | FLORENCE | Gregory | Robinson |
| 1 | HIXSON | Mesita | Alethia Park |
| 1 | KERN | Mesa | Stanton |
| 1 | MESITA | Mesa | Stanton |
| 1 | MISSISSIPPI | Florence | Rowena |
| 1 | MORROW | Stockwell | Galloway |
| 1 | NYE | Baltimore | Cincinnati |
| 1 | OCHOA | Baltimore | Cincinnati |
| 1 | STOCKWELL | Moore | Piedmont |
| 1 | WHITAKER | Stockwell | Galloway |



District 2

Programmed for
FY 22/23/24

| Dist | Location | From | To |
|------|----------|---------|---------------|
| 2 | ATLAS | Alabama | Gateway South |
| 2 | POLK | Russell | Pollard |
| 2 | TAYLOR | Piedras | Copia |
| 2 | TITANIC | Alabama | Gateway South |
| 2 | TYLER | Elm | Pollard |
| 2 | VOLCANIC | Alabama | Gateway South |

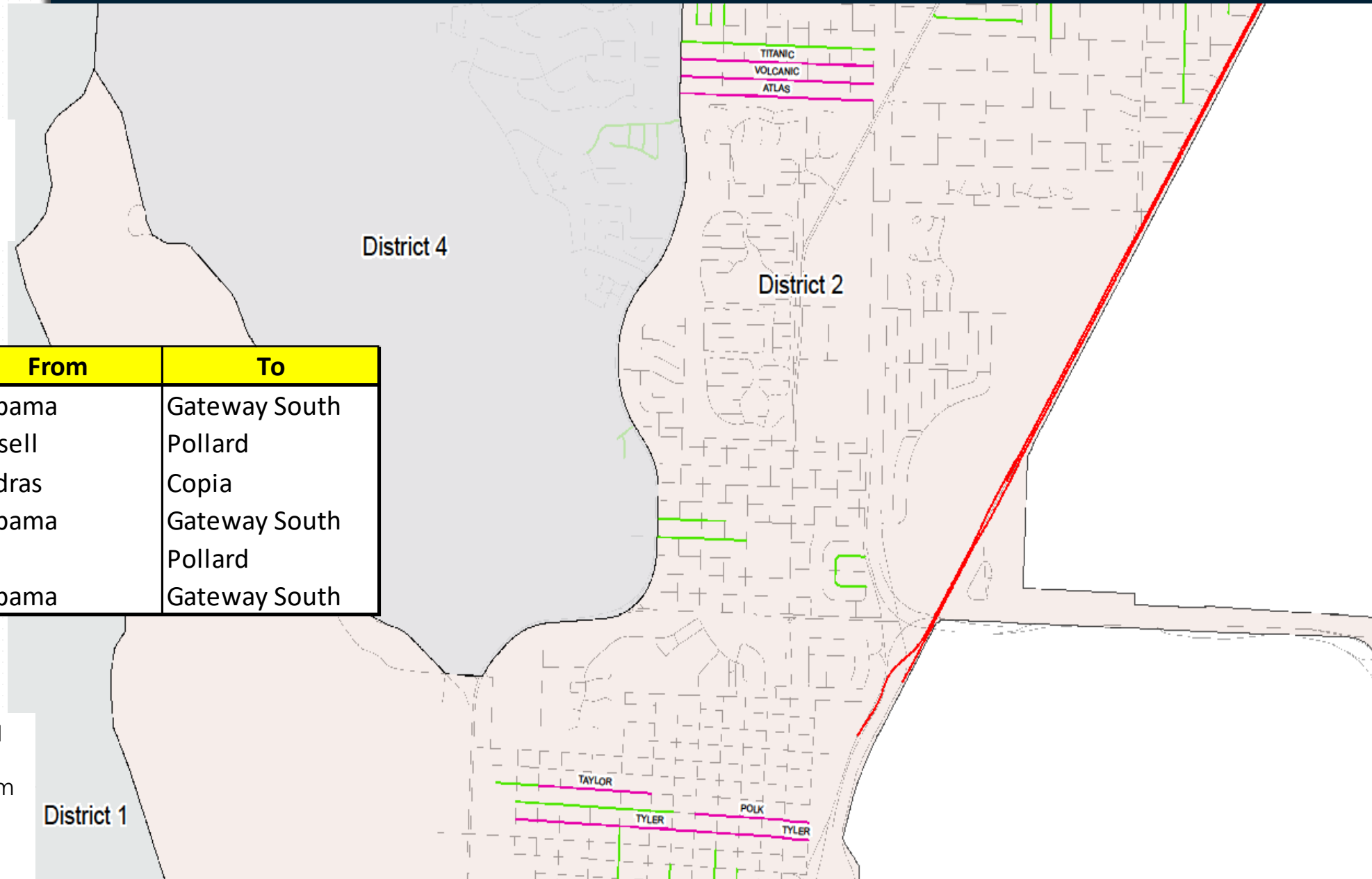
Magenta – Proposed residential streets FY21-22

Orange – Residential streets from the FY19-20 Program

Green – 2012 street CIP

Purple – Arterial Program

Blue – TxDOT



District 3

Programmed for
FY 22/23/24

| Dist | Location | From | To |
|------|-------------|--------------|--------------|
| 3 | CAREY | Dale | North Loop |
| 3 | DALE | Dodge | Stewart |
| 3 | FRANKLIN DR | Dale | Carolina |
| 3 | GLARDON | Green Valley | Green Valley |
| 3 | JOE TURNER | Stewart | CDS |
| 3 | NIMITZ | Carolina | CDS |
| 3 | ORGAIN | Dale | North Loop |
| 3 | PRATT | Nimitz | CDS |
| 3 | ROSE | Franklin | North Loop |
| 3 | RYAN | Franklin | Franklin |
| 3 | STEWART | Franklin | North Loop |
| 3 | STILES | Dodge | Carolina |
| 3 | WARNOCK | Dale | North Loop |
| 3 | WAYNE | Dale | North Loop |

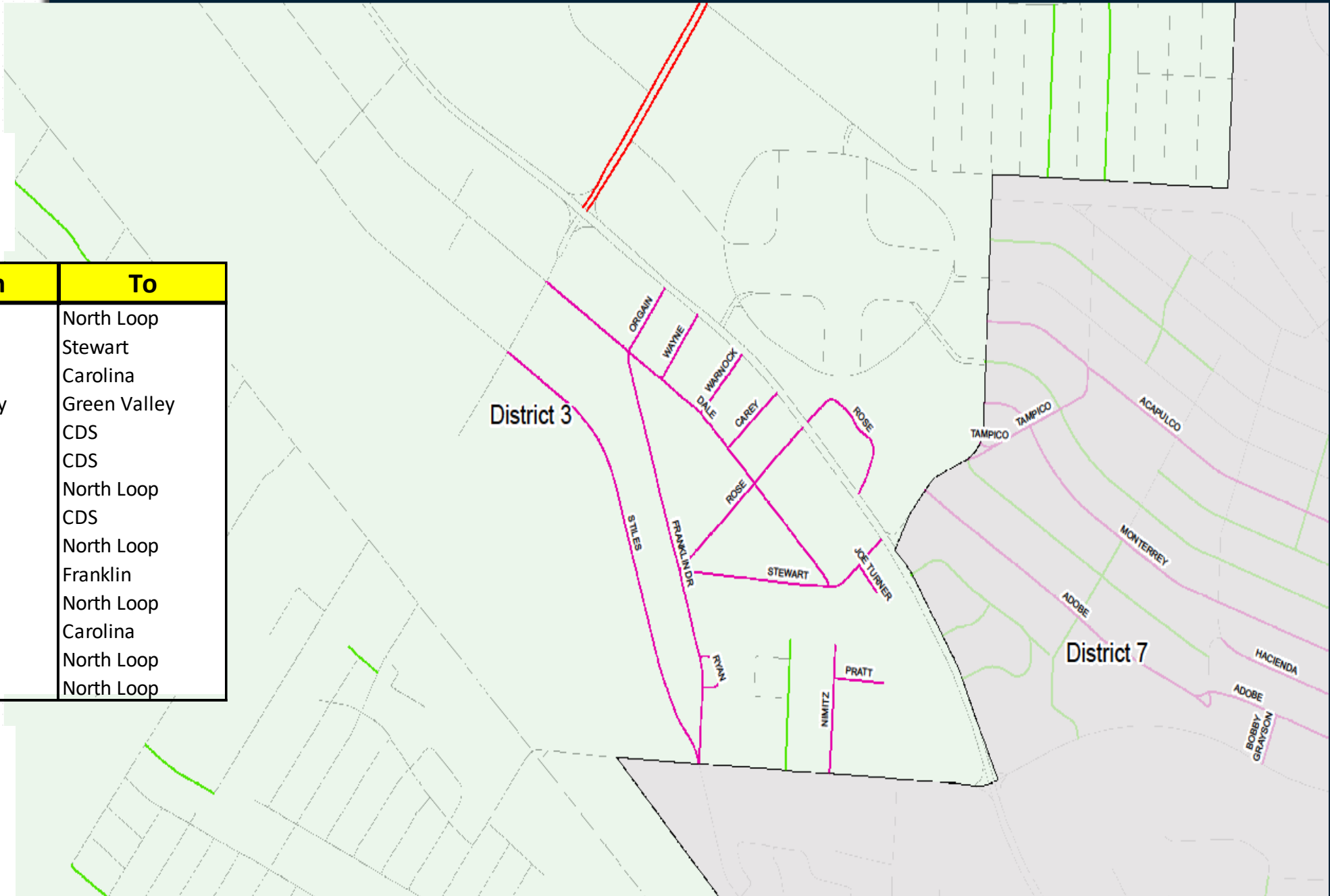
Magenta – Proposed residential streets FY21-22

Orange – Residential streets from the FY19-20 Program

Green – 2012 street CIP

Purple – Arterial Program

Blue – TxDOT



District 4

Programmed for
FY 22/23/24

| Dist | Location | From | To |
|------|------------|----------|------------|
| 4 | COCKRELL | Salem | CDS |
| 4 | DEARBORNE | Mackinaw | CDS |
| 4 | DUNLAP | Triumph | Dearborne |
| 4 | EDINBURG | McCombs | CDS |
| 4 | GARLAND | Salem | CDS |
| 4 | HEMMINGWAY | McCombs | Kensington |
| 4 | HODGES | Kendall | Norwood |
| 4 | KENDALL | Salem | Dearborne |
| 4 | KENSINGTON | McCombs | Edinburg |
| 4 | MACKINAW | Salem | Dearborne |
| 4 | MCCORMICK | Nolan | CDS |
| 4 | NOLAN | Salem | McCormick |
| 4 | NORWOOD | Kendall | Warren |
| 4 | SYCENE | Rushing | CDS |
| 4 | WARREN | Salem | Edinburg |

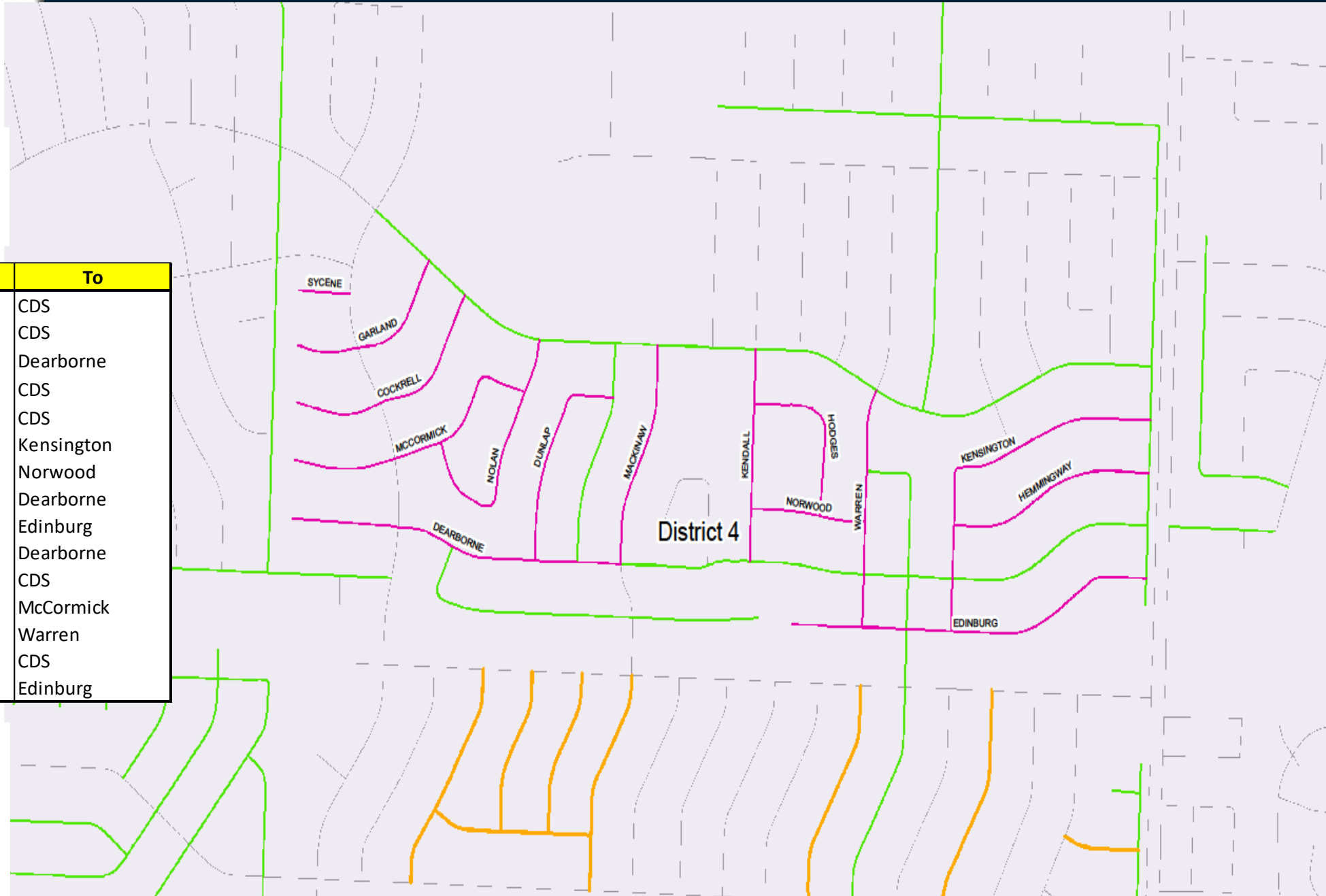
Magenta – Proposed residential streets
FY21-22

Orange – Residential streets from the
FY19-20 Program

Green – 2012 street CIP

Purple – Arterial Program

Blue – TxDOT



District 5

Programmed for
FY 22/23/24

| Dist | Location | From | To |
|------|---------------|--------------|---------------|
| 5 | BLUE MOON | Rising Sun | CDS |
| 5 | BRECKENRIDGE | Red Sails | George Dieter |
| 5 | BROKEN ARROW | CDS | CDS |
| 5 | CHICKASAW | Pendleton | Broken Bow |
| 5 | GHOST DANCE | Pendleton | Pendleton |
| 5 | KACHINA | CDS | CDS |
| 5 | LONE WOLF | Pendleton | Pendleton |
| 5 | PENDLETON | Turner | Edgemere |
| 5 | RED CLOUD | Breckenridge | CDS |
| 5 | RISING STAR | Rising Sun | Pendleton |
| 5 | RISING SUN | Tenaha | Edgemere |
| 5 | SMOKE SIGNAL | Kachina | CDS |
| 5 | SOARING EAGLE | Kachina | CDS |
| 5 | STILL WATER | Broken Arrow | Pendleton |
| 5 | TEKOA | Smoke Signal | CDS |
| 5 | TENAHA | Red Sails | Hazel Time |
| 5 | WOOSTER | Breckenridge | CDS |

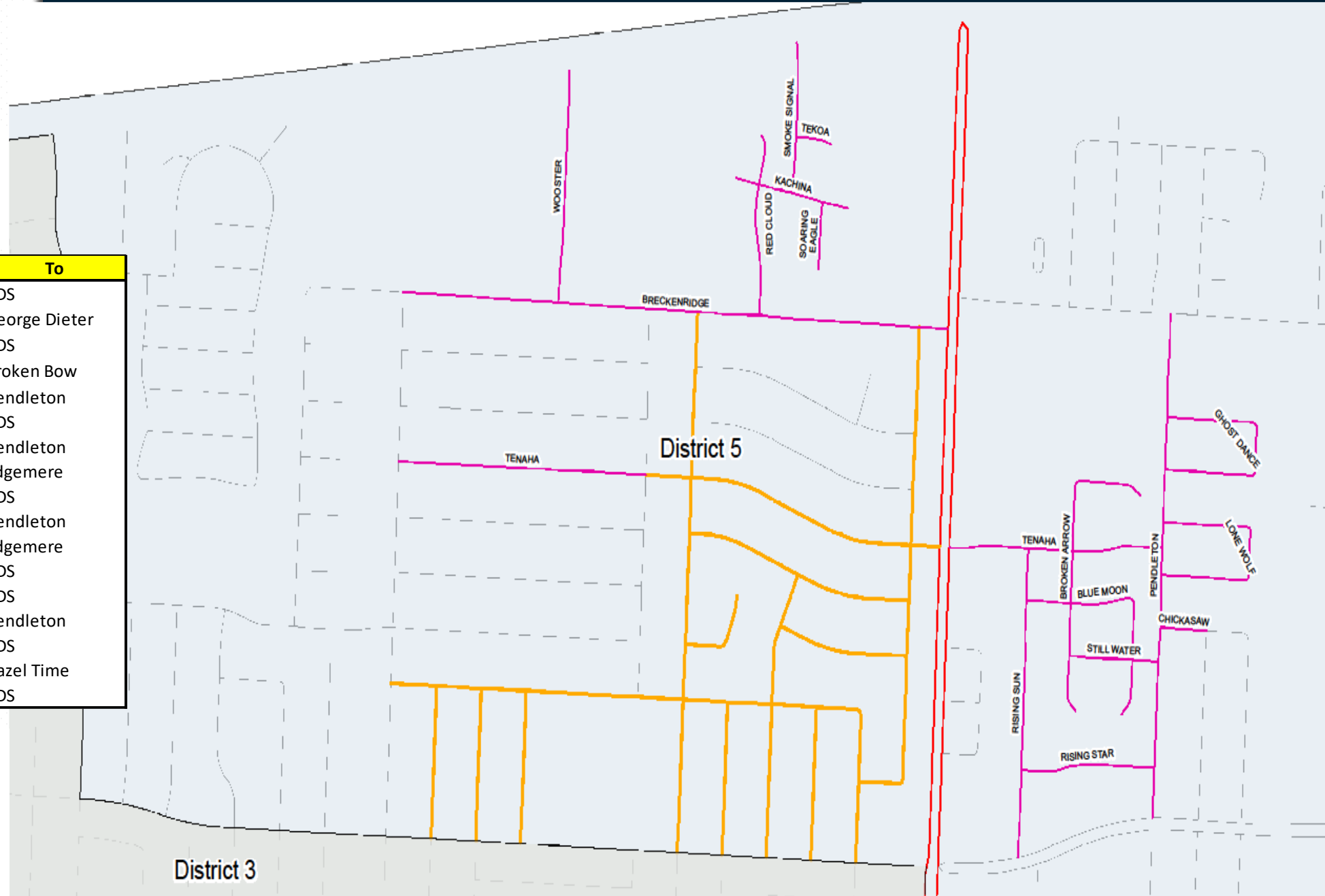
Magenta – Proposed residential streets
FY21-22

Orange – Residential streets from the
FY19-20 Program

Green – 2012 street CIP

Purple – Arterial Program

Blue – TxDOT



District 6

Programmed for
FY 22/23/24

| Dist | Location | From | To |
|------|---------------|------------|--------------|
| 6 | BENITO | Candalaria | CDS |
| 6 | CANA | Juno | Alameda |
| 6 | CANANEA | Alameda | CDS |
| 6 | CANDELARIA | Roseway | Alameda |
| 6 | CERES | Hancock | Cana |
| 6 | COLINA | Alameda | CDS |
| 6 | COLMENERO | Candalaria | CDS |
| 6 | GASPAR | Alameda | Socorro |
| 6 | HANCOCK | Juno | Presa |
| 6 | IRMA | Old Pueblo | CDS |
| 6 | JUNO | Cana | Leonardo |
| 6 | LEONARDO | Juno | Roseway |
| 6 | LOLITA | Valdiviez | CDS |
| 6 | MORALES | Juno | CDS |
| 6 | OLD PUEBLO | Zaragoza | Alameda |
| 6 | PALLA | Hancock | Cana |
| 6 | PRESA | Roseway | Alameda |
| 6 | SAINT ANTHONY | Candalaria | Juno |
| 6 | SAN FERNANDO | Candalaria | Juno |
| 6 | SAN PEDRO | Gaspar | CDS |
| 6 | SANDOVAL | Candalaria | San Fernando |
| 6 | VALDIVIEZ | Candalaria | Juno |



Magenta – Proposed residential streets
FY21-22

Orange – Residential streets from the
FY19-20 Program

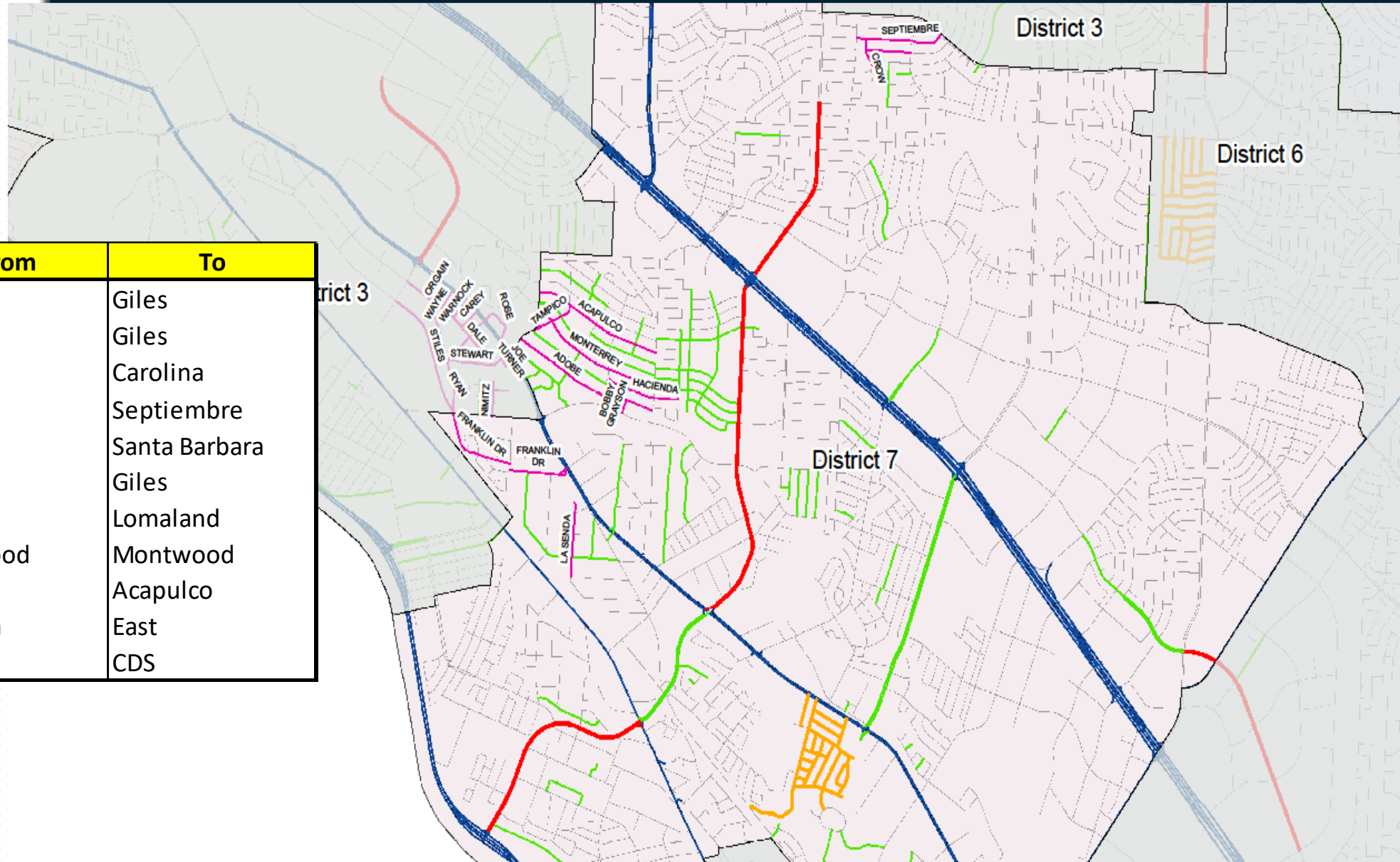
Green – 2012 street CIP

Purple – Arterial Program

Blue – TxDOT

District 7

Programmed for
FY 22/23/24



| Dist | Location | From | To |
|------|---------------|----------|---------------|
| 7 | ACAPULCO | Hunter | Giles |
| 7 | ADOBE | Hunter | Giles |
| 7 | BOBBY GRAYSON | Adobe | Carolina |
| 7 | CROW | Janway | Septiembre |
| 7 | HACIENDA | Ameca | Santa Barbara |
| 7 | MONTERREY | Hunter | Giles |
| 7 | OCTUBRE | Crow | Lomaland |
| 7 | SEPTIEMBRE | Mosswood | Montwood |
| 7 | TAMPICO | Hunter | Acapulco |
| 7 | FRANKLIN | Carolina | East |
| 7 | LA SENDA | McCune | CDS |

Magenta – Proposed residential streets
FY21-22

Orange – Residential streets from the
FY19-20 Program

Green – 2012 street CIP

Purple – Arterial Program

Blue – TxDOT

District 8

Programmed for
FY 22/23/24

| Dist | Location | From | To |
|------|-------------|----------|----------|
| 8 | ARIZONA | Ochoa | St Vrain |
| 8 | CALIFORNIA | Ochoa | St Vrain |
| 8 | CLIFF | Ochoa | St Vrain |
| 8 | NEVADA | Ochoa | St Vrain |
| 8 | OCHOA | Schuster | Wyoming |
| 8 | RIVER | Ochoa | St Vrain |
| 8 | SAINT VRAIN | Cliff | Missouri |
| 8 | VIRGINIA | Schuster | Missouri |
| 8 | WYOMING | Ochoa | St Vrain |
| 8 | YANDELL | Ochoa | St Vrain |

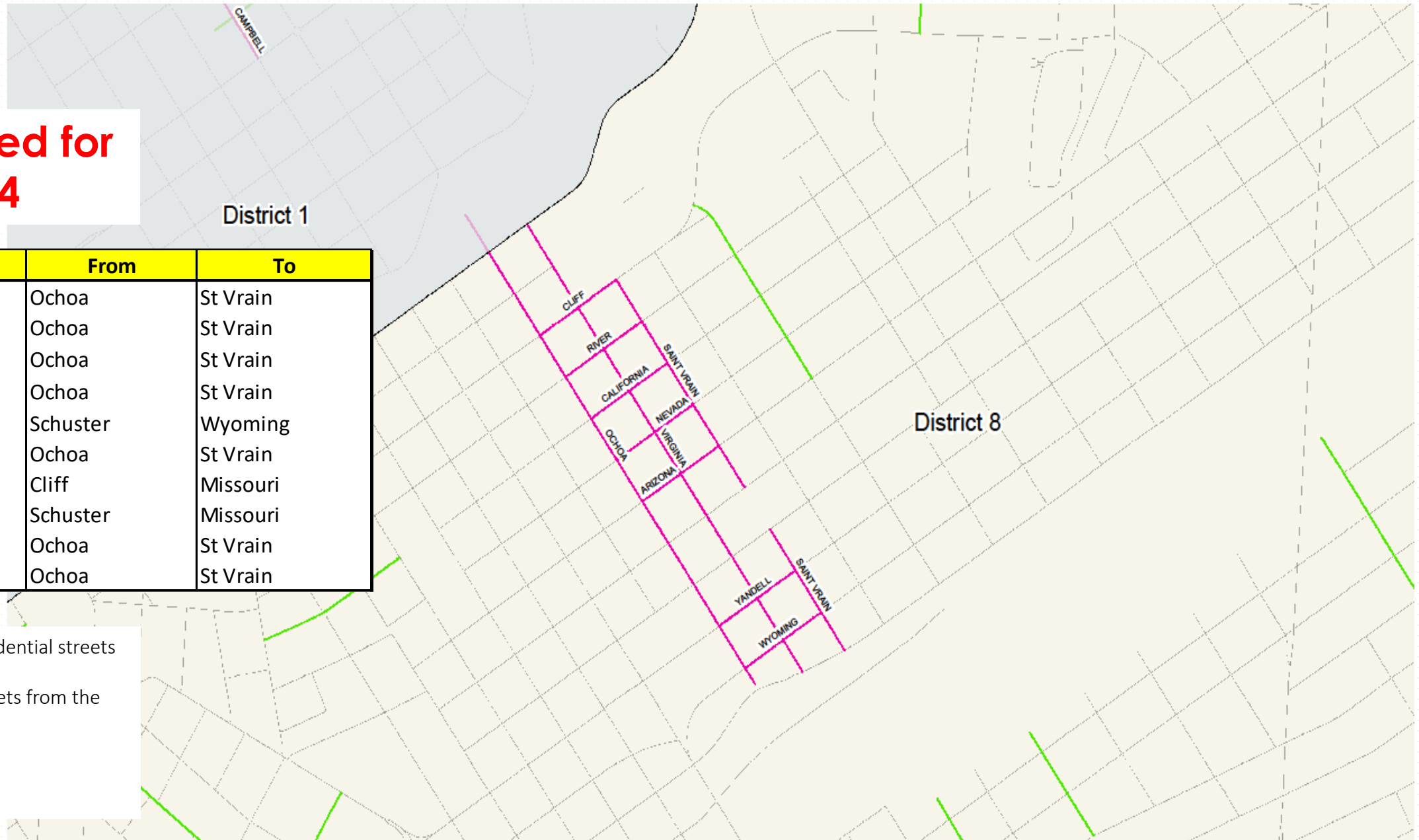
Magenta – Proposed residential streets
FY21-22

Orange – Residential streets from the
FY19-20 Program

Green – 2012 street CIP

Purple – Arterial Program

Blue – TxDOT



\$20 M FY 2022: 100 Streets to be completed

| Dist | Location | From | To | Dist | Location | From | To | Dist | Location | From | To |
|------|---------------|-------------|----------|------|--------------|--------------|---------------|------|---------------|---------------|---------------|
| 1 | BALTIMORE | Florence | Piedmont | 3 | DALE | Dodge | Stewart | 5 | QUINTANA | Red Sails | Edgemere |
| 1 | CAMPBELL | Wellesley | Kerby | 3 | FRANKLIN DR | Dale | Carolina | 5 | RED HAWK | Spotted Horse | Proud Eagle |
| 1 | MESITA | Mesa | Stanton | 3 | STILES | Dodge | Carolina | 5 | RISNER | Quintana | Edgemere |
| 1 | STOCKWELL | Moore | Piedmont | 4 | COCKRELL | Salem | Dead End | 5 | RUNNING DEER | Brekenridge | Edgemere |
| 2 | CORTE DEL SOL | Mobile | CDS | 4 | DEARBORNE | Mackinaw | W Dead End | 5 | SPOTTED HORSE | War Feather | Edgemere |
| 2 | IDALIA | Copia | Pollard | 4 | KENSINGTON | Edinburgh | McCombs | 5 | TENAHA | Hazel Time | George Dieter |
| 2 | JACKSON | Oklahoma | Raynor | 4 | MCCORMICK | Nolan | W Dead End | 5 | WAR ARROW | Quintana | Edgemere |
| 2 | MCKINLEY | Oklahoma | Piedras | 4 | NOLAN | McCormick | Salem | 5 | WAR FEATHER | Running Deer | Proud Eagle |
| 2 | MOBILE | Copia | CDS | 5 | BRECKENRIDGE | Red Sails | George Dieter | 6 | BILLIE MARIE | Gene Sarazen | Robert Wynn |
| 2 | MOREHEAD | Nebraska | Alabama | 5 | BROKEN ARROW | N Dead End | S Dead End | 6 | BOB MITCHELL | Robert Wynn | George Dieter |
| 2 | NATIONS | Nebraska | Alabama | 5 | GHOST DANCE | Pendleton | Pendleton | 6 | BUNKY HENRY | Russ Randall | George Dieter |
| 2 | POLK | Russell | Pollard | 5 | HICKMAN | Quintana | Edgemere | 6 | CANA | Juno | Alameda |
| 2 | PORTER | Alabama CDS | Pollard | 5 | IVANHOE | Quintana | Edgemere | 6 | CANDELARIA | Roseway | Alameda |
| 2 | SACRAMENTO | Copia | Pollard | 5 | PEACEPIPE | Running Deer | CDS | 6 | FRED MARTI | Billie Marie | George Dieter |
| 2 | SAVANNAH | Stevens | Partello | 5 | PENDLETON | Turner | Edgemere | 6 | GENE SARAZEN | Robert Wynn | George Dieter |
| 2 | TAYLOR | Piedras | Copia | 5 | PROUD EAGLE | Brekenridge | Quintana | 6 | HANCOCK | Juno | Presa |
| 2 | TYLER | Elm | Pollard | 5 | QUANAHA | Quintana | Edgemere | 6 | JACK CUPIT | Russ Randall | George Dieter |

\$20 M FY 2022: 100 Streets to be completed

| Dist | Location | From | To | Dist | Location | From | To | Dist | Location | From | To |
|------|---------------|--------------|---------------|------|----------------|-------------|---------------|------|-------------|---------------|-------------|
| 6 | JAMES GRANT | Robert Wynn | George Dieter | 7 | DRUGAN | Borrett | Moorehead | 8 | ARIZONA | Ochoa | Saint Vrain |
| 6 | JERRY ABBOTT | Trawood | Bob Mitchell | 7 | FOREST HAVEN | Borett | Pinewood | 8 | BOONE | Alameda | Rivera |
| 6 | LEONARDO | Juno | Roseway | 7 | GLEN HAVEN | Borett | Saint Marys | 8 | CALIFORNIA | Ochoa | Saint Vrain |
| 6 | PAUL MORAN | Trawood | Bunky Henry | 7 | HACIENDA | Ameca | Santa Barbara | 8 | CENTRAL | Paisano | Piedras |
| 6 | PRESA | Roseway | Alameda | 7 | LA SENDA | Milton | N Dead End | 8 | CLIFF | Ochoa | Saint Vrain |
| 6 | RANDY PETRI | Billie Marie | George Dieter | 7 | LYNN HAVEN | Borett | Saint Marys | 8 | CYPRESS | Piedras | Paisano |
| 6 | ROBERT WYNN | Trawood | George Dieter | 7 | MOORELAND | Park Haven | Reindeer | 8 | HAMMETT | Frutas | Alameda |
| 6 | RON CERRUDO | Trawood | Bunky Henry | 7 | MORERAS | Naranjos | Naranjos | 8 | MAGOFFIN | Eucalyptus | Piedras |
| 6 | RUSS RANDALL | Trawood | Bob Mitchell | 7 | NARANJOS | Saint Marys | Reindeer | 8 | NEVADA | Ochoa | Saint Vrain |
| 6 | STEVE SPRAY | James Grant | Robert Wynn | 7 | OCTUBRE | Crow | Lomaland | 8 | PERA | Magoffin | Alameda |
| 6 | TOM ULOZAS | Robert Wynn | George Dieter | 7 | PARK HAVEN | Borrett | Naranjos CDS | 8 | RIVER | Ochoa | Saint Vrain |
| 7 | BOBBY GRAYSON | Adobe | Carolina | 7 | PINEWOOD | Park Haven | Reigndeer | 8 | RIVERA | Gateway North | Boone |
| 7 | BORRETT | North Loop | Reindeer | 7 | REINDEER | Borrett | Naranjos CDS | 8 | SAN ANTONIO | Piedras | Copia CDS |
| 7 | CLIFFORD | Niles | Reindeer | 7 | ROSE HAVEN | Borett | Pinewood | 8 | WYOMING | Ochoa | Saint Vrain |
| 7 | CRESTWOOD | Park Haven | Drugan | 7 | SAINT MARYS | North Loop | Lasso | 8 | YANDELL | Ochoa | Saint Vrain |
| 7 | CROW | Septiembre | Janway | 7 | SAINT MATTHEWS | North Loop | Park Haven | | | | |
| 7 | DELL HAVEN | Borett | Pinewood | 7 | SEPTIEMBRE | Mosswood | Montwood | | | | |

2017 Capital Plan

Approved by City Council on
August 7, 2017



31 Completed Projects

| | |
|------------------------------------------|-------------------------------------------------------|
| Cohen Stadium Canopy | Silver Spring and Shadow Mountain Signal |
| Chamizal Pedestrian Enhancements Phase 1 | Alameda and Whittier Signal |
| Design of 2 Regional Aquatic Facilities | Fire Station Restrooms |
| Kenworthy and Sun Valley Signal | New Fire Trucks and Ambulance |
| Marcus Uribe and Sean Haggerty Signal | Non-Public Safety Vehicles |
| Northgate Removal from Flood Plain | North Loop and Lafayette Signal |
| Paseo de las Luces | Northwestern and Helen of Troy Signal |
| PCI Study | Pellicano and Michelangelo Signal |
| Pebble Hills and Rich Beem Signal | Resler and Nardo Goodman Signal |
| Pebble Hills and Sun Fire Signal | Rich Beem-Edgemere Roundabout |
| Police Department Facilities Master Plan | Schuster and El Paso Signal |
| Police Fleet Replacement | University Pedestrian & Bicycle Enhancements |
| Resler and Northern Pass Signal | Zaragoza and John Hayes Signal |
| San Jacinto Restrooms | Zaragoza POE, Winn Road, Pan American Dr Improvements |
| Spray Parks Enhancements | |
| Tierra Cortez and Tierra Este Signal | |

3 Projects in Bidding

| Project | District | Estimate | Est. Construction Start |
|--------------------------------|----------|--------------|-------------------------|
| Delta Bridge Reconstruction | 3 | \$1,640,103 | Spring 2022 |
| Doniphan and Bird Signal | 8 | \$300,000 | Spring 2022 |
| Doniphan and West Green Signal | 1 | \$300,000 | Spring 2022 |
| Rojas Widening | 6 | \$12,940,373 | Spring 2022 |

4 Projects in Construction

| Project | District | Estimate | Est. Completion |
|---------------------------------------------------------|----------|-------------|-----------------|
| Bicycle Connectivity Phase I (Repeats in 2018 Cap Plan) | CW | \$2,332,844 | Fall 2021 |
| Chamizal Pedestrian Enhancements Phase II | 8 | \$1,333,502 | Fall 2021 |
| Rio del Norte Intersection Improvements | 6 | \$500,000 | Early 2022 |

2018 Capital Plan

Approved by City Council on
December 18, 2017



1 Project in Design

| Project | District | Estimate | Est. Construction Start |
|-------------------------|----------|-------------|-------------------------|
| Railroad Reconstruction | 4 | \$5,000,000 | 2023 |

2 Projects in Bidding

| Project | District | Estimate | Est. Construction Start |
|-----------------------------|----------|-------------|-------------------------|
| Schuster Reconstruction | 1 & 8 | \$7,559,900 | Summer 2022 |
| Ted Houghton Reconstruction | 6 | \$1,273,080 | Spring 2022 |

7 Projects in Construction

| Street | District | Estimate | Est. Completion |
|---------------------------------|----------|--------------|-----------------|
| Bicycle Connectivity Phase II | CW | \$1,909,149 | Winter 2021 |
| Far East Transfer Center | 5 | \$5,000,000 | Winter 2021 |
| Montana Pedestrian Enhancement | 2 | \$3,241,465 | Winter 2021 |
| Montana Rapid Transit System | 2,3,5 | \$49,200,000 | Early 2022 |
| Oregon Lighting | 8 | \$2,000,000 | Early 2022 |
| PDN Roundabout | 8 | \$3,100,000 | Early 2022 |
| Yarbrough Bridge Reconstruction | 7 | \$1,965,491 | Summer 2022 |

1 Future Programmed Projects

| Project | District | Estimate | Est. Construction Start |
|-----------------------------|----------|-------------|-------------------------|
| Tom Lea Slope Stabilization | 1 | \$8,411,993 | 2023 |

7 Completed Projects

| Project | District | Estimate | Status |
|----------------------------------|----------|--------------|----------|
| Alabama Bridge Reconstruction | 2 | \$1,528,764 | Complete |
| Brian Ray Reconstruction | 6 | \$2,121,000 | Complete |
| Border West Expressway TXDOT | CW | \$281,700.00 | Complete |
| Davis Bridge Reconstruction | 6 | \$812,437 | Complete |
| Downtown Sidewalks | 8 | \$598,700 | Complete |
| Hawkins Reconstruction | 3 | \$9,360,000 | Complete |
| Lighting on Paso Del Norte Trail | 1 | \$600,000 | Complete |

2019 Capital Plan

Approved by City Council on
April 30, 2018, amended on
July 23, 2018



8 Projects in Design

| Project | District | Estimate | Est. Construction Start |
|---------------------------------------------------------------------------------------------------------------------------|----------|--------------|-------------------------|
| El Paso Citywide Wayfinding Phase I | CW | \$1,030,000 | Spring 2022 |
| Sun City Lights | 2,6,7 | \$3,150,000 | TBD |
| Sunland Park, Shadow Mountain, Westwind, Redd Road Phase II ,Executive Center Roadway Lighting and Landscape Improvements | 1,8 | \$10,727,200 | Summer 2022 |

3 Projects in Bidding

| Project | District | Estimate | Est. Construction Start |
|---------------------------------------------------------------------------------------|----------|-------------|-------------------------|
| Pebble Hills, Airport Road, Vista Del Sol Roadway Lighting and Landscape Improvements | 2,3,6,7 | \$7,455,500 | Winter 2021 |

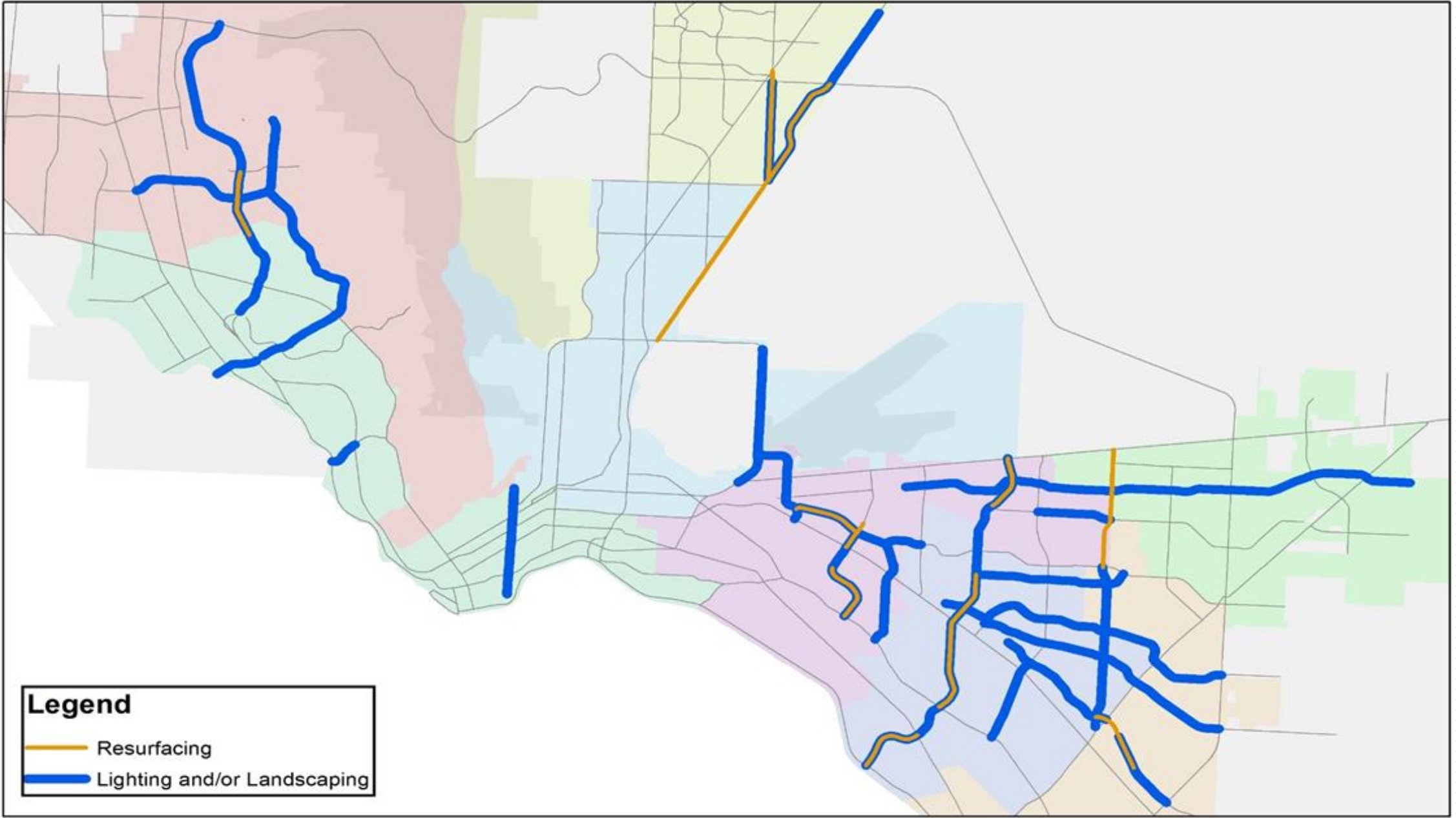
6 Projects in Construction

| Project | District | Estimate | Est. Completion |
|------------------------------------------------------------------------------------|-----------|--------------|-----------------|
| Pellicano Dr, Railroad Dr, Cotton Street Median Improvements | 1,2,4,6,8 | \$10,079,200 | Winter 2021 |
| Yarbrough South, George Dieter & Lee Trevino Roadway Lighting and Median Landscape | 7 | \$8,327,600 | Spring 2022 |

Future Projects

| Project | District | Estimate |
|-------------------------------------------------------------------------------------------------------------------------------------------------------|----------|--------------|
| Phase 3 Lighting and Landscape Improvements: Edgemere Drive Hunter Drive Mc Combs Street Trawood Drive Resler Drive Rojas Drive | CW | \$20,597,000 |

Top 25 Arterial Improvements



2020 Capital Plan

Approved by City Council December 9, 2019



1 Projects in Design

| Project | District | Estimate | Est. Construction Start |
|------------------------------|----------|-------------|-------------------------|
| Sun City Lights - District 3 | 3 | \$1,060,800 | 2022 |

18 Projects in Bidding

| Project | District | Estimate | Est. Construction Start |
|---------------------------------------------|----------|----------|-------------------------|
| Dyer and Tiger Eye traffic signal | 4 | \$37,773 | 2022 |
| Edgemere and Tierra Dorada traffic signal | 5 | \$39,810 | 2022 |
| Edgemere and Tim Foster traffic signal | 5 | \$39,810 | 2022 |
| Frontera & Roxbury School Flasher | 1 | \$37,773 | 2022 |
| Hawkins and WH Burges traffic signal | 3 | \$37,773 | 2022 |
| Lee Trevino and Ivanhoe traffic signal | 3 | \$37,773 | 2022 |
| Mesa Hills and Cabaret traffic signal | 8 | \$39,810 | 2022 |
| North Loop and Burgundy traffic signal | 6 | \$37,773 | 2022 |
| Paseo Del Norte and GWL Site traffic Signal | 1 | \$39,810 | 2022 |

18 Projects in Bidding (Cont'd)

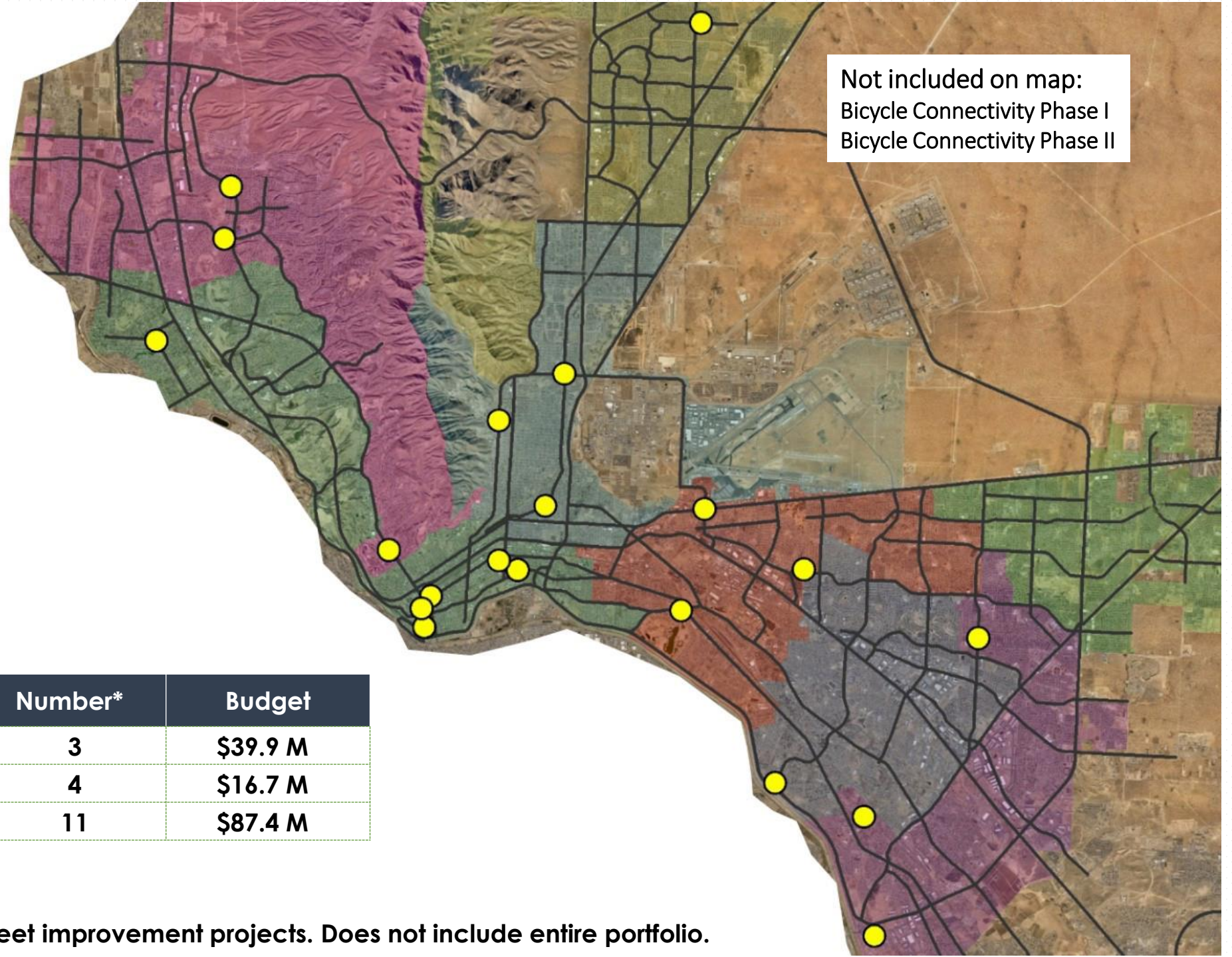
| Project | District | Estimate | Est. Construction Start |
|--------------------------------------------------|----------|-------------|-------------------------|
| Paseo Del Norte and Northern Pass traffic signal | 1 | \$37,773 | 2022 |
| Pebble Hills and John Hayes traffic signal | 5 | \$39,810 | 2022 |
| Pebble Hills and Tierra Mina traffic signal | 5 | \$39,810 | 2022 |
| Pebble Hills and Tim Foster traffic signal | 5 | \$39,810 | 2022 |
| Rich Beem and Ralph Seitsinger traffic signal | 5 | \$37,773 | 2022 |
| Sean Haggerty and Rushing traffic signal | 4 | \$37,773 | 2022 |
| Sun City Lights - District 3 | 3 | \$1,060,800 | 2022 |
| Ventana and Tierra Este traffic signal | 5 | \$39,810 | 2022 |
| Zaragoza and Castner traffic signal | 6,7 | \$39,810 | 2022 |
| Zaragoza and Golden Gate traffic signal | 6 | \$39,810 | 2022 |

MPO

Street Improvements

- City match funds may range from 5-20% of the overall project cost
- Leverage City funds to provide improvements needed by the community





| Phase | Number* | Budget |
|--------------|---------|----------|
| Design | 3 | \$39.9 M |
| Bidding | 4 | \$16.7 M |
| Construction | 11 | \$87.4 M |

* Only represents street improvement projects. Does not include entire portfolio.

3 Projects in Design

| Street | Scope | Estimate | Status / Est. Construction Start |
|----------------------------------------------------|--------------------------------------|--------------|----------------------------------|
| Citywide Bicycle Infrastructure | Bicycle Improvements | \$5,978,305 | Fall 2022 |
| ITS Infrastructure at Zaragoza and BOTA On-system | Int'l Bridge Technology Improvements | \$16,000,000 | Fall 2022 |
| ITS Infrastructure at Zaragoza and BOTA Off-system | Bridge Technology Improvements | \$18,000,000 | Fall 2023 |

3 Projects in Bidding

| Street | Scope | Estimate | Status / Est. Construction Start |
|--------------------------------|-----------------------------|--------------|----------------------------------|
| Delta Bridge Reconstruction | Bridge Replacement | \$1,640,103 | Early 2022 |
| Playa Drain Shared Use Path PM | Pedestrian Improvements | \$2,063,990 | Early 2022 |
| Rojas Widening | Infrastructure Improvements | \$12,940,373 | Spring 2022 |

11 Projects in Construction

| Street | Scope | Estimate | Est. Completion |
|------------------------------------------|-----------------------------|--------------|-----------------|
| Alabama Bridge Reconstruction | Bridge Replacement | \$1,528,764 | COMPLETE |
| Bicycle Connectivity Phase I | Bicycle Improvements | \$2,332,844 | Winter 2021 |
| Bicycle Connectivity Phase II | Bicycle Improvements | \$1,909,149 | Winter 2021 |
| Central Business District Phase IV | Infrastructure Improvements | \$18,417,036 | Fall 2023 |
| Chamizal Pedestrian Enhancements Phase 2 | Pedestrian Improvements | \$1,333,502 | Winter 2021 |
| Davis Bridge Reconstruction | Bridge Replacement | \$812,437 | COMPLETE |
| Far East Transfer Center | Transit | \$5,000,000 | Winter 2021 |
| Montana Pedestrian Enhancements | Pedestrian Improvements | \$3,241,465 | Winter 2021 |
| Montana Rapid Transit System | Transit | \$49,200,000 | Early 2022 |
| Oregon Lighting | Infrastructure Improvements | \$2,000,000 | Early 2022 |
| PDN Roundabout | Intersection Improvements | \$3,100,000 | Early 2022 |
| Rio del Norte Intersection Improvements | Pedestrian Improvements | \$500,000 | Early 2022 |
| Yarbrough Bridge Reconstruction | Bridge Replacement | \$1,965,491 | Summer 2022 |

CDBG

Community Development Build Grant



Street Improvements

Projects in Process

| Street | Scope | Status | Estimate | Est. Completion |
|-------------------------------|-------------------------|--------------|-------------|-----------------|
| Fort Boulevard Improvements | Pedestrian Improvements | Construction | \$615,556 | Winter 2021 |
| Trowbridge Drive Improvements | Pedestrian Improvements | Design | \$1,005,050 | Fall 2022 |

CDBG



Trowbridge Existing Conditions



Fort Boulevard Existing Conditions

Street Pavement Continues to be a high priority for our Community

Future Options:

1. Bond Program 2022

Mission

Deliver exceptional services to support a high quality of life and place for our community

Values

Integrity, **R**espect, **E**xcellence,
Accountability, **P**eople

Vision

Develop a vibrant regional economy, safe and beautiful neighborhoods and exceptional recreational, cultural and educational opportunities powered by a high performing government

THANK YOU

