



CITY OF EL PASO

Trails and Trailheads

September 12, 2023

4: Enhance El Paso's Quality of Life Through Recreational, Cultural, and Educational Environments

7: Enhance and Sustain El Paso's Infrastructure Network





AGENDA

- **Project Background**
- **Active Projects**
- **OSAB Recommendations**
- **Staff Recommendations**



Project Selection

- Identified projects were selected during the development of the bond based on planning documents:
 - Parks and Recreation Master Plan
 - Plan El Paso
 - City of El Paso Bike Plan,
 - Needs expressed by the community
- The projects were discussed and reviewed with various committees

*All projects were also approved by Council.
Adding or deleting projects from the program also
requires Council approval.*



Advisory Committees / Boards

- Bicycle Advisory Committee
- City of El Paso Advisory Committee on Public Service Board Land Management
- Museums and Cultural Affairs Advisory Board
- Capital Improvements Advisory Committee
- Bond Oversight Advisory Committee
- Community Development Committee
- Greater El Paso Civic, Convention and Tourism Advisory
- Open Space Advisory Board
- Parks and Recreation Advisory Board.

2012 Quality of Life



- TRAILHEADS



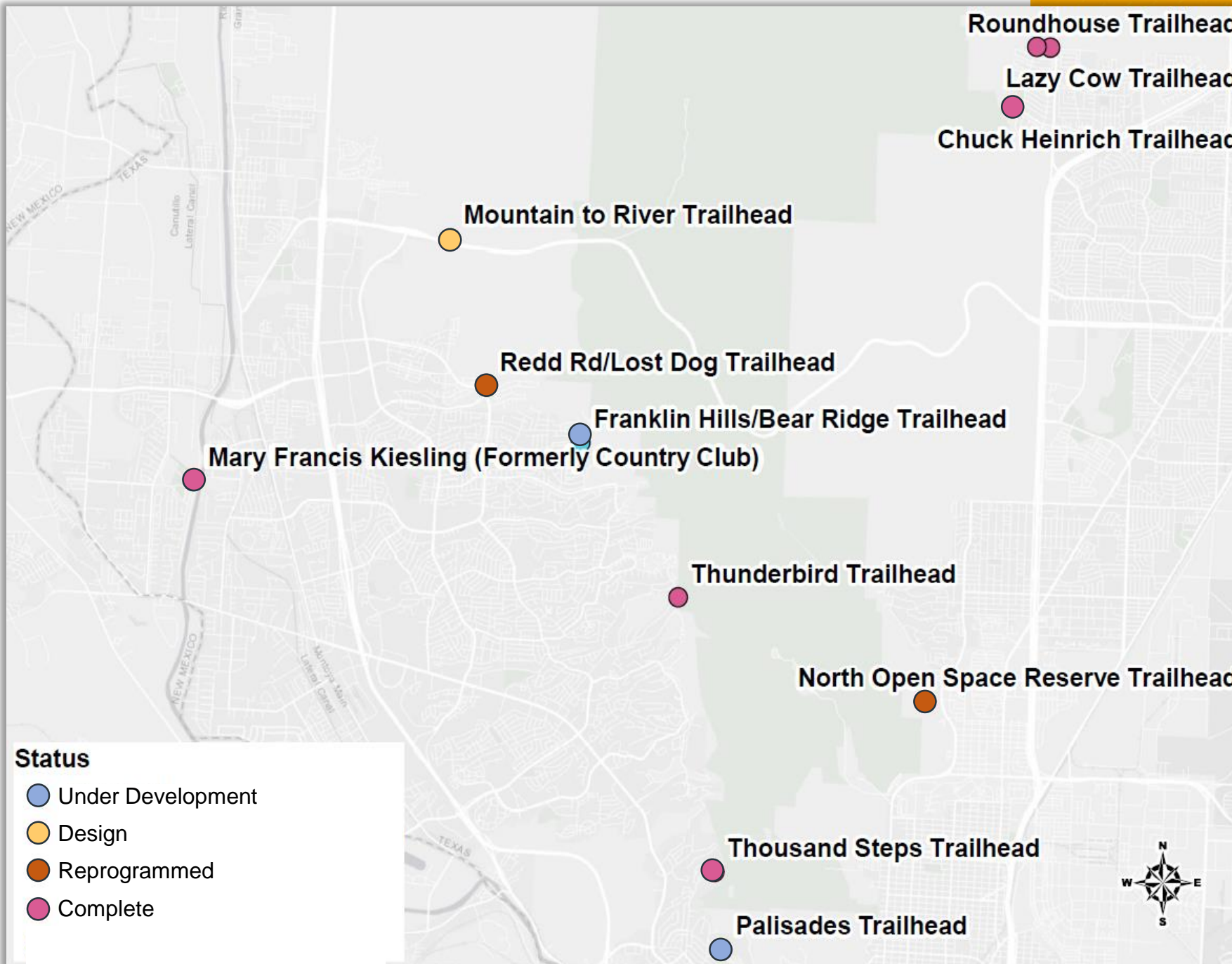
Trailhead Background

- Approved as part of the 2012 Quality of life Bond
- Included as Initiative 7 of the 20 in 2020 Strategic Plan

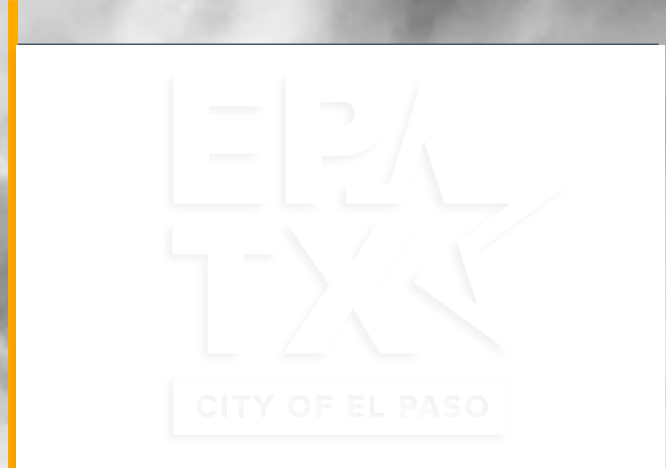
TRAILHEAD AMENITIES:

-  TRASH RECEPTACLES
-  INFORMATION KIOSK
-  MUTT MITT STATION
-  PARKING AREA
-  BICYCLE REPAIR STATION
-  DRINKING FOUNTAIN

Trailhead Plan



Project Name	Status
Architectural and Engineering	Complete
Furniture, Fixtures, and Equipment	Complete
Lazy Cow	Complete
Roundhouse Trailhead	Complete
Thousand Steps	Complete
Thunderbird	Complete
Thunderbird – Phase II	Complete
Chuck Heinrich	Complete
Country Club Trailhead at MFK Park	Complete
Redd Rd / Lost Dog	Reprogrammed
Palisades – Land Acquisition	Completed under design
Palisades	Under Development - EPWU
Franklin Hills (Bear Ridge)	EPWU Arroyo Improvement Starting in October
Mountain to River Trailhead	95% Design



Completed Projects



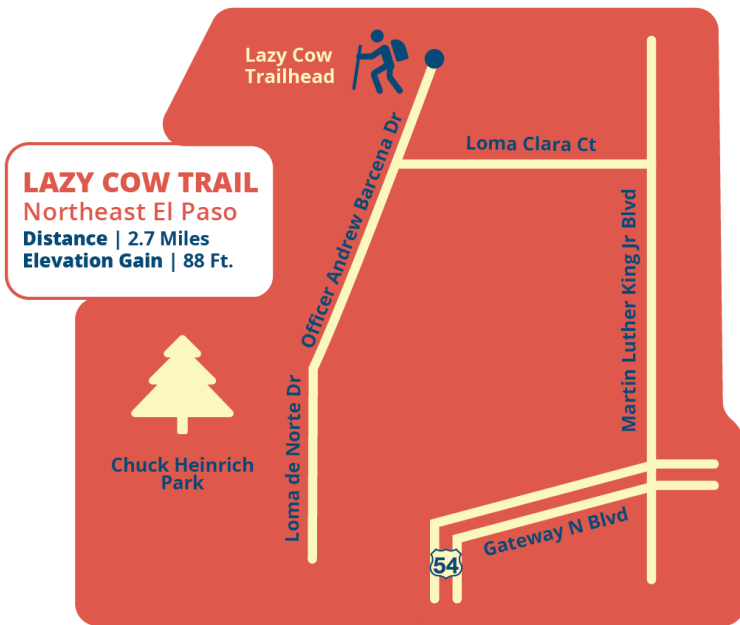
- TRAILHEADS



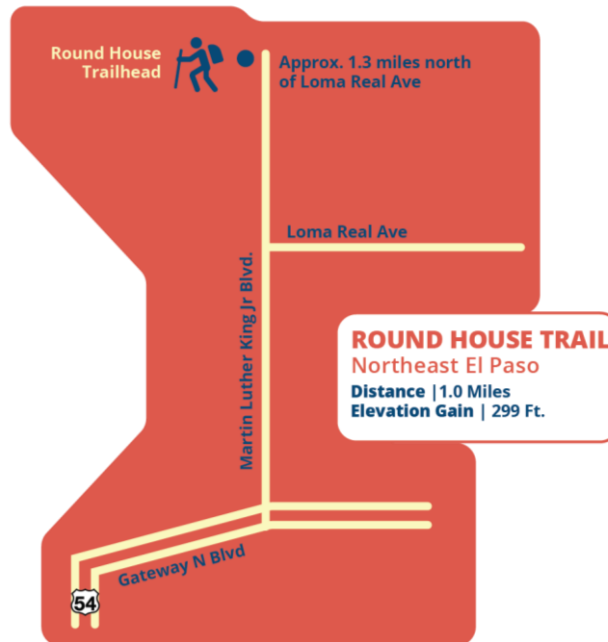
1000 STEPS



JAN SUMRALL MEMORIAL



LAZY COW



ROUND HOUSE



Completed Trailhead Maps

TRAILHEADS



Thousand Steps

TRAILHEADS

Lazy Cow



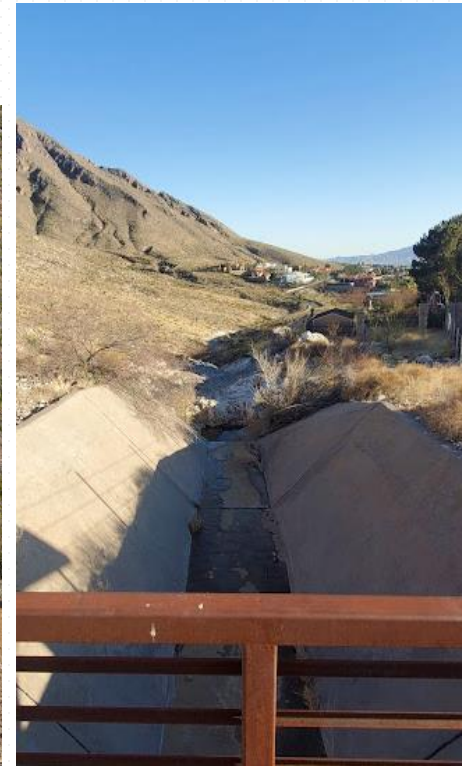
TRAILHEADS



Round House

TRAILHEADS

Jan Sumrall



Palisades Trailhead

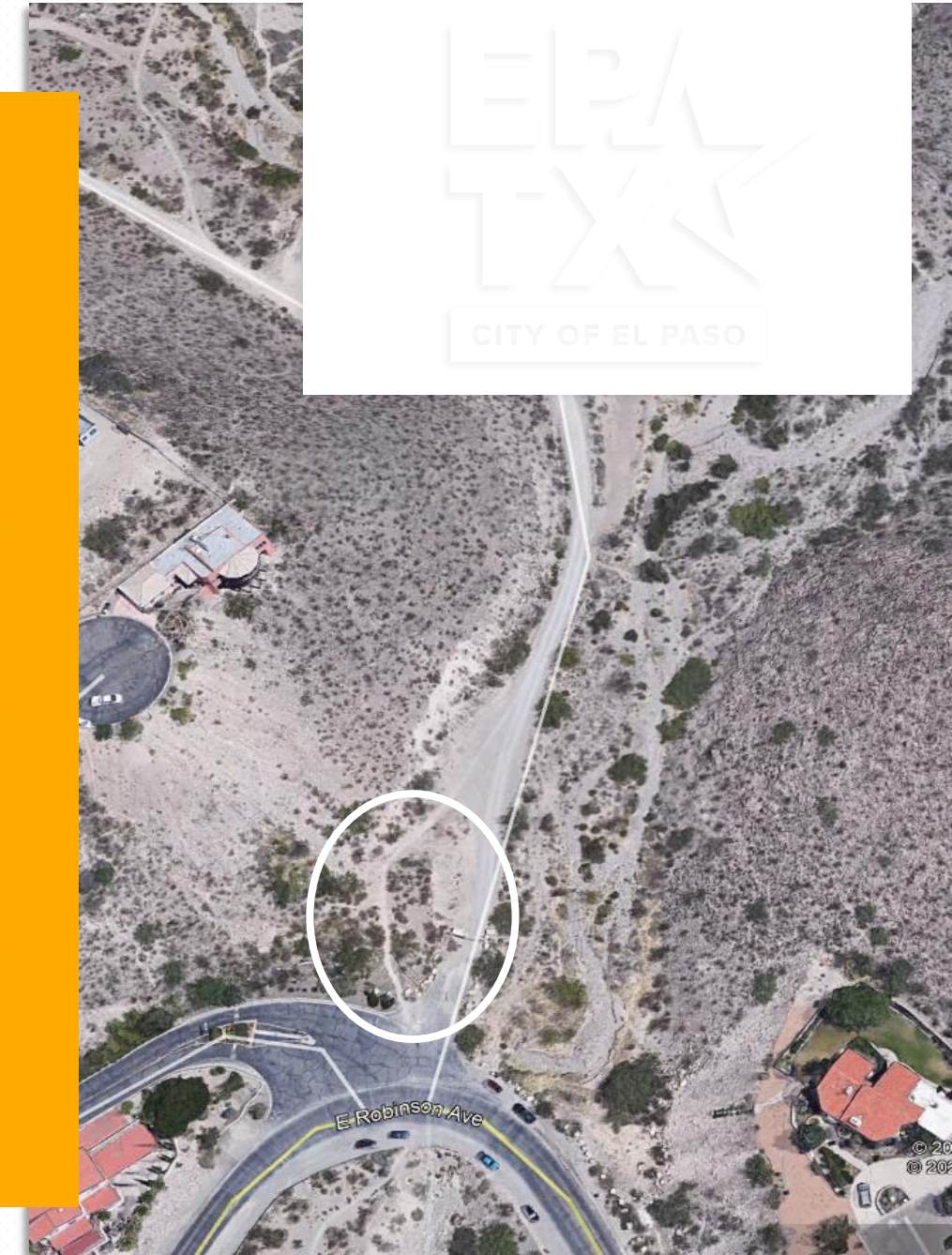
Project Details

Location:	West El Paso
District:	1
Construction Budget:	\$128,956
Funding Source:	2012 Quality of Life

Project Update:

Design is 100% complete

Construction to be done by EP Water as part of the Palisades Dam Improvements. Trailhead will be constructed following dam improvements. Tentative construction start July 2024.



Bear Ridge

Project Details

Location:	West El Paso
District(s):	8
Construction Budget:	\$128,956
Funding Source:	2012 Quality of Life

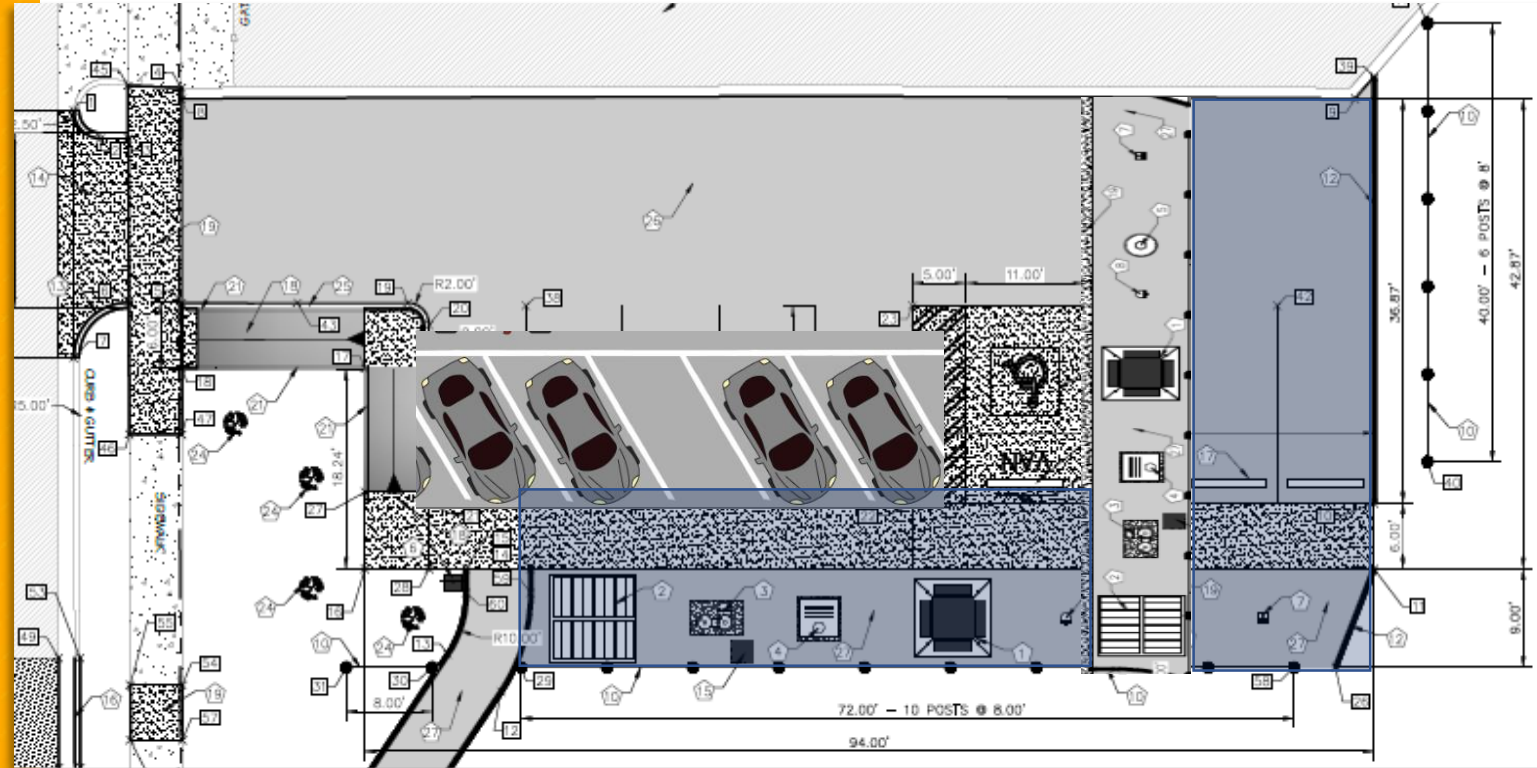
EPWU Arroyo Improvement Starting in October



Bear Ridge

Proposed modifications as proposed by BOAC:

- Angled parking
- Reduce amount of parking to 4 spaces and 1 ADA
- Move amenities to mountain view
- Trail will be field modified to ensure connection to existing trail



2012 Quality of Life



- PAVED TRAILS



As approved by Council

- Valley Creek to Rio Grande N.
- Ascarate to Riverside
- Country Club to Rio Grande N.
- Westside Community Park
- Montana to I 10 Segment A
- Skyline to Loma Real Segment A
- Carolina to Emerson
- Ellis Lateral to Valley Creek
- Sunset Terrace/Terrace Trail Bridges
- Donald to Dyer
- Skyline to Loma Real Segment B
- Montana to I 10 Segment B
- Montana to I 10 Segment C
- Skyline to Loma Real Segment C
- Montana to I 10 Segment D
- Skyline to Loma Real Segment D

Paved Trails





2012 Quality of Life Timeline

On March 7, 2017 Council approved amended trail and trailhead priority list to include Mountain to River Trail Phases I, II, and III and an associated trailhead, and a trailhead at Franklin Hills (Bear Ridge)

August 15, 2023 City Council Recommendation to meet with
Open Space Advisory Board



OSAB Motions

(August 22, 2023)

- 1.To deprogram two proposed trails, Ellis Lateral Connection Trail and Carolina to Emerson Trail, all the remaining funds to the master trails account
- 2.To recommend to council to let the Rio Grande trail north bids expire and extend the Mary Francis Kiesling trailhead, formerly known as Valley Creek park, to the pathway using the existing funds.
- 3.To make the recommendation to city council to direct staff to investigate having the Mountain to River Trailhead be placed at Tom Mays Park access road and Woodrow Bean Transmountain road using the existing graded parking lot and creating graded connectivity between the parking lot and Tom Mays Trail/state park.
- 4.To postpone the feasibility study until city council provides direction on the Mountain to River Trail alignment

Rio Grande Trail North

Connectivity to:

- ✓ Country Club Road
- ✓ Completion of an existing 8 mile trail system
- ✓ Proposed construction award in September



Rio Grande Trail North

Data usage of the trail:

- Deprogramming would impact 94,00 annual users (data collected from 2019-2022)
- 1/3 of the visitors are within the same zip code of which walk to the trail and may have strollers or mobility issues.

The decision to remove this trail would impact **470,000 visitors** to the trail system

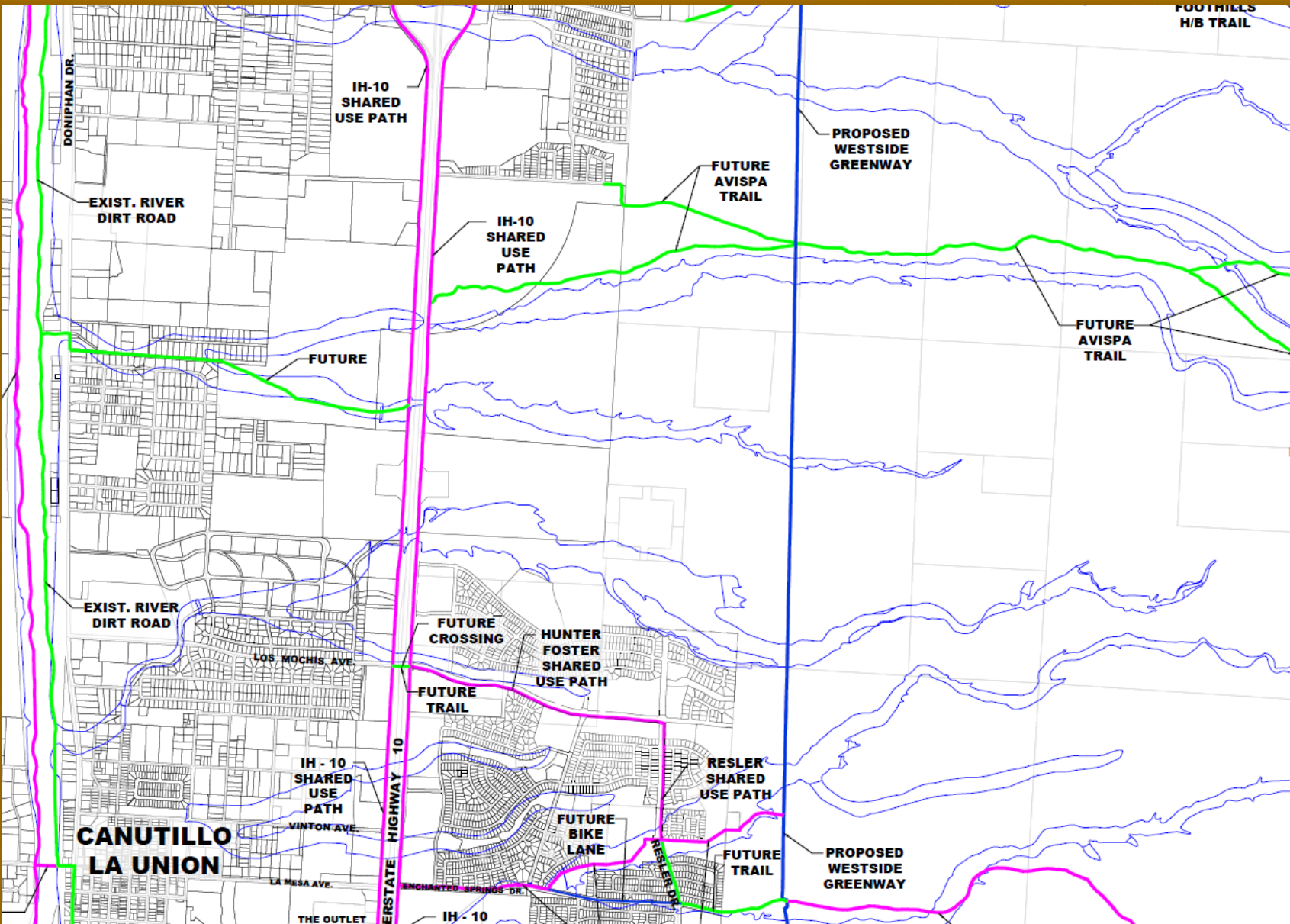




Mountain to River Trail

Postponed as requested by OSAB

- Engineering Study to examine feasibility of Avispa Canyon
 - Review entrance to State Park
 - Potential bridge crossing to Rio Grande



Mountain To River Project Timeline



TRAIL

APRIL 2023 – JULY 2023

TRAILHEAD

APRIL 2023 – SEPTEMBER 2023

BIDDING

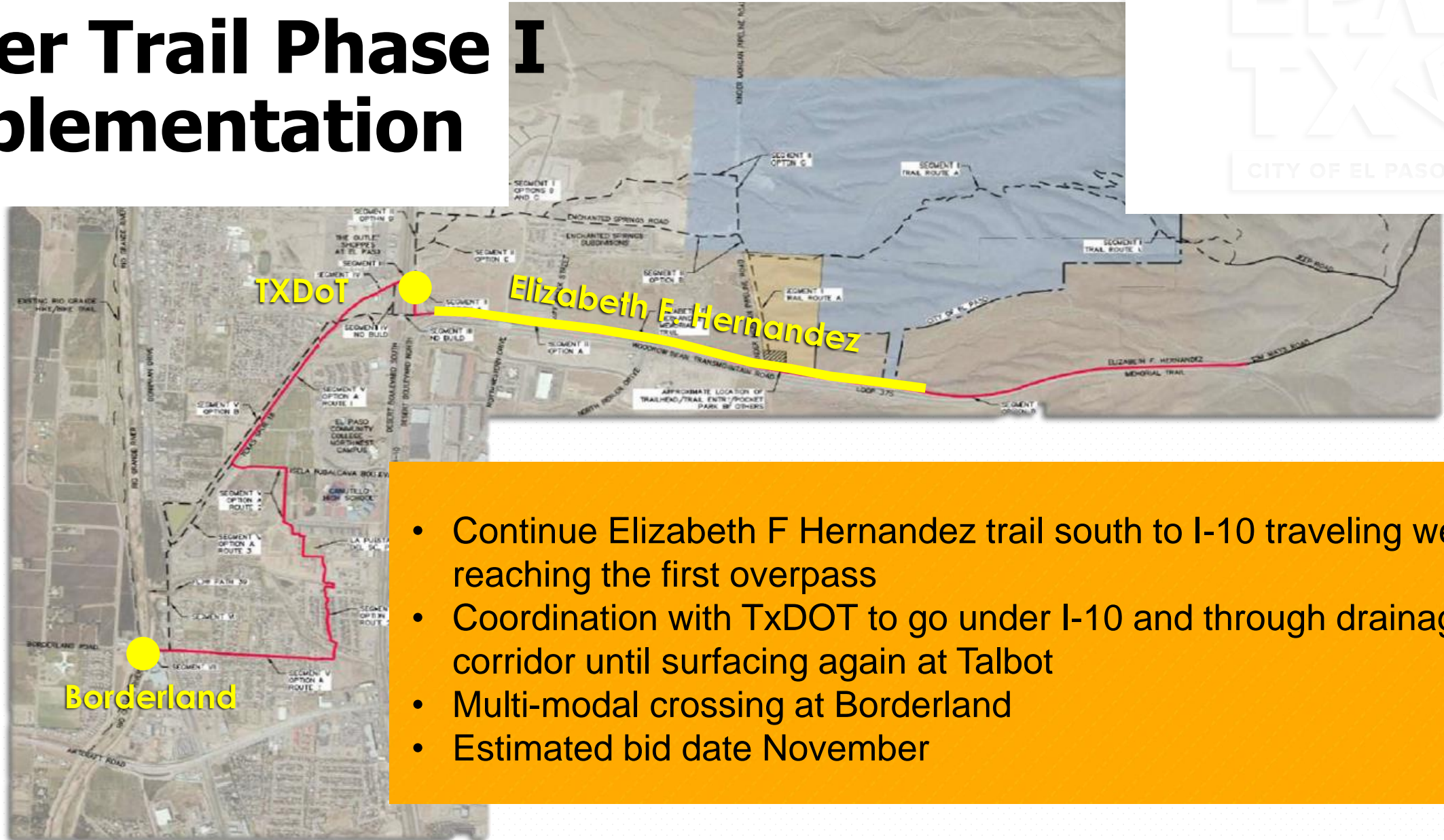
AUG 2023 – DEC 2023

CONSTRUCTION

JAN 2024 – MAY 2024



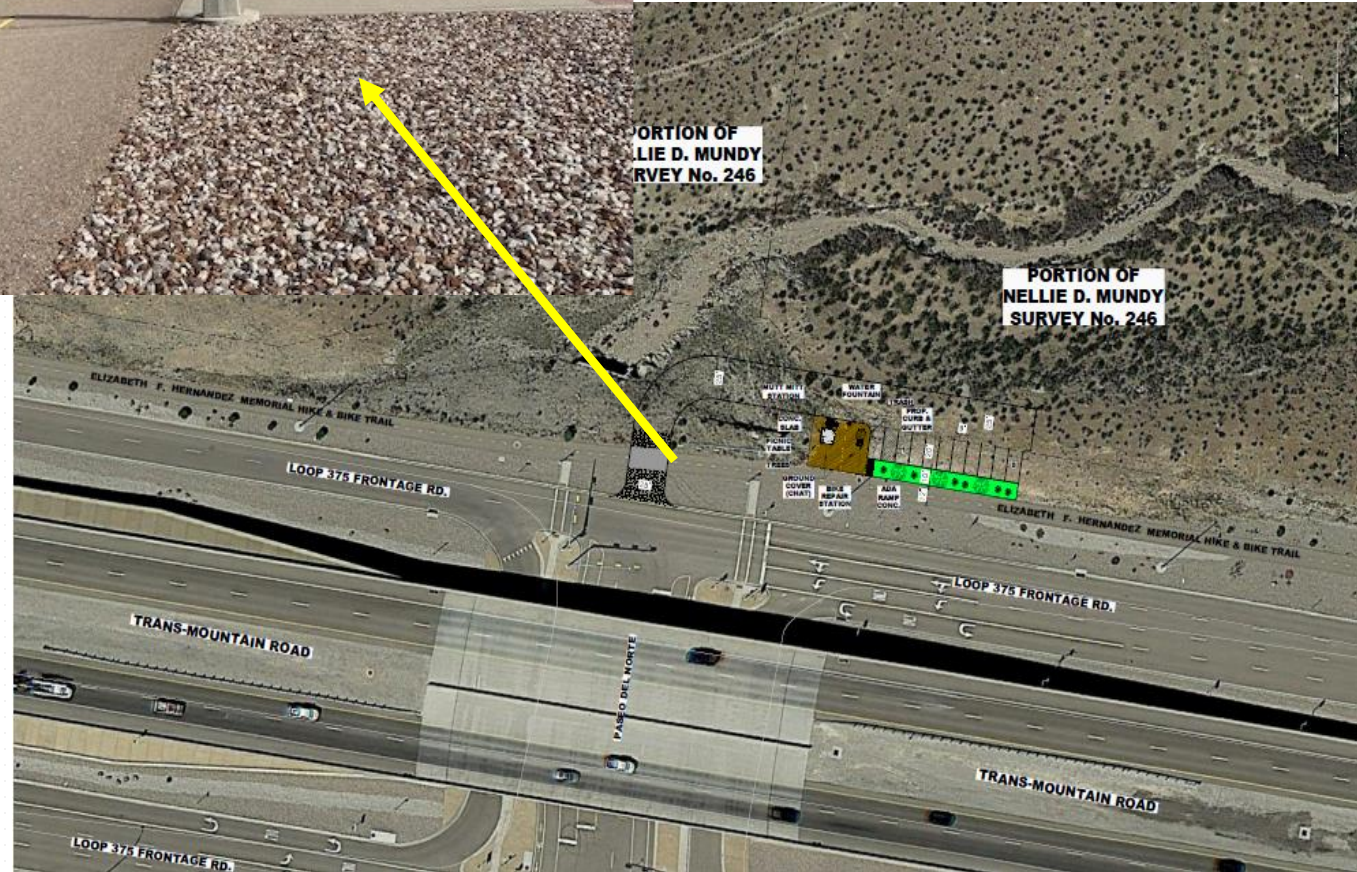
Paved Mountain to River Trail Phase I Implementation



- Continue Elizabeth F Hernandez trail south to I-10 traveling west until reaching the first overpass
- Coordination with TxDOT to go under I-10 and through drainage corridor until surfacing again at Talbot
- Multi-modal crossing at Borderland
- Estimated bid date November

Mountain to River Trailhead

- Coordination with TxDOT since 2020 due to location of trailhead on TxDOT
- Proposed location of trail head behind existing traffic signal
- Trailhead will be combined with bid set for Mountain to River trail



Open Space Advisory Board (OSAB)

Trail Updates:

- April 11, 2018
- July 18, 2018
- March 13, 2019
- August 12, 2020
- September 09, 2020
- January 06, 2021
- February 03, 2021
- July 14, 2021



**Public
Engagement**

Staff Recommendations



- 1.To deprogram two proposed trails, Ellis Lateral Connection Trail and Carolina to Emerson Trail, all the remaining funds to the Rio Grande Trail
2. Include Valley Creek connection in future trail project
- 3.Designed trailhead for paved Mountain to River Trail, as directed by BOAC, remain in current location
- 4.To postpone the feasibility study until city council provides direction on the Mountain to River Trail alignment

- Place the feasibility study of Avispa Canyon, partner with Camino Real Mobility Authority (RMA) on hold as requested by OSAB.
- Authorization to deprogram the proposed “Carolina to Emerson Trail” and the proposed “Ellis Lateral Connection Trail” and make necessary budget transfers to reprogram the funding to Rio Grande North trail, in the amount of \$537,141.68
- Authorization to move forward with procurement of the Paved Mountain to River trail and current location of the trailhead, as directed by BOAC



Discussion and Action

MISSION



Deliver exceptional services to support a high quality of life and place for our community.

VISION



Develop a vibrant regional economy, safe and beautiful neighborhoods and exceptional recreational, cultural and educational opportunities powered by a high performing government.



VALUES

Integrity, **R**espect, **E**xcellence,
Accountability, **P**eople

MISIÓN



Brindar servicios excepcionales para respaldar una vida y un lugar de alta calidad para nuestra comunidad

VISIÓN



Desarrollar una economía regional vibrante, vecindarios seguros y hermosos y oportunidades recreativas, culturales y educativas excepcionales impulsadas por un gobierno de alto desempeño



VALORES

Integridad, Respeto, Excelencia,
Responsabilidad, Personas

Carolina To Emerson Trail



- **Project Limits:**
 - Carolina To Emerson
- **District:**
 - 3

Ellis Lateral Connection Trail



- **Project Limits:**
 - Ellis Lateral to Valley Creek
- **District:**
 - 1