

GENERAL INFORMATION:

The applicant seeks approval for:

Certificate of Appropriateness for construction of an addition at the rear

STAFF RECOMMENDATION:

The Historic Preservation Office recommends APPROVAL WITH MODIFICATIONS of the proposed scope of work based on the following recommendations:

The Design Guidelines for El Paso's Historic Districts, Sites, and Properties recommend the following:

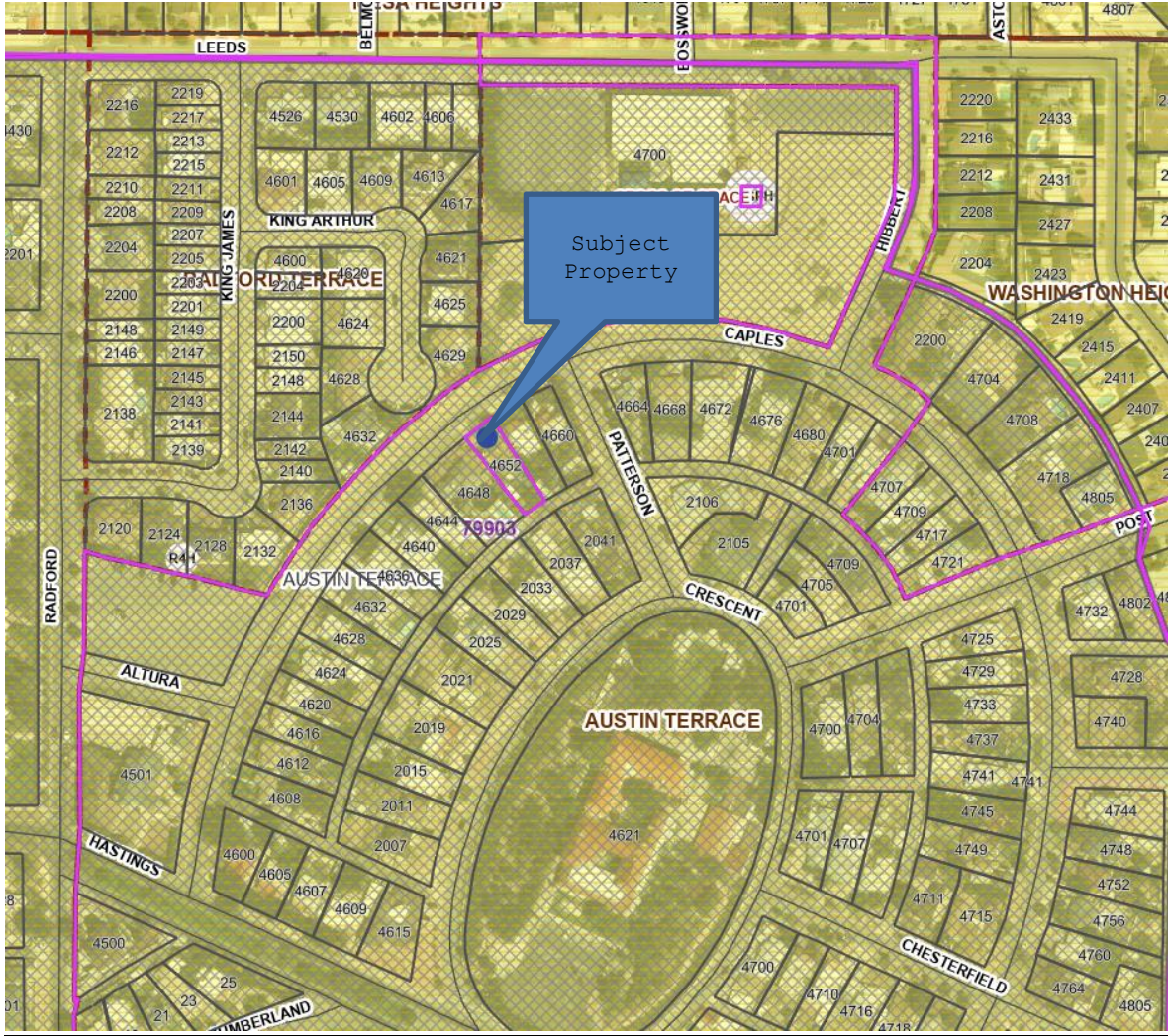
- *Introduce additions in locations that are not visible from the street-generally on rear elevations.*
- *Locate additions carefully so they do not damage or conceal significant building features or details.*
- *It is not appropriate to introduce an addition if it requires the removal of character-defining building features such as patios, mature vegetation or a detached structure.*
- *Design an addition so it is compatible in roof form, proportions, materials and details with the existing structure.*
- *Design new buildings and their features to be compatible in scale, materials, proportions and details with existing historic structures.*
- *Design an addition that is compatible with but subtly different from existing historic homes in the district.*
- *Design an addition so that if removed in the future, the historic building's form and character defining features are not obscured, damaged, or destroyed.*

The Secretary of the Interior's Standards for Rehabilitation recommend the following:

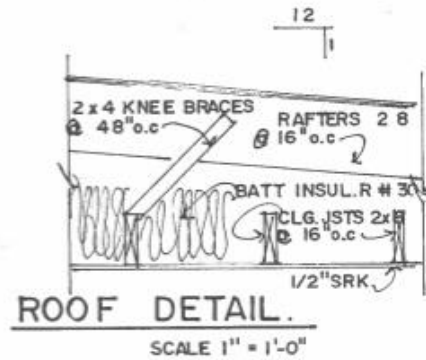
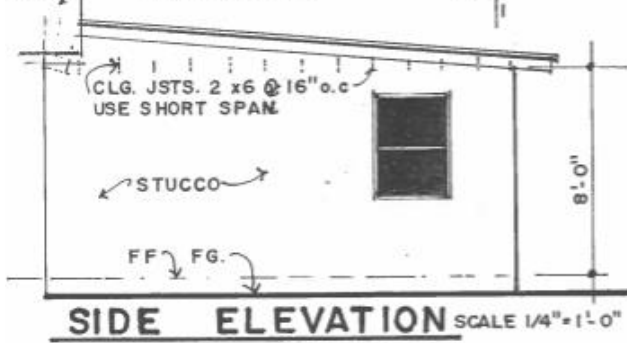
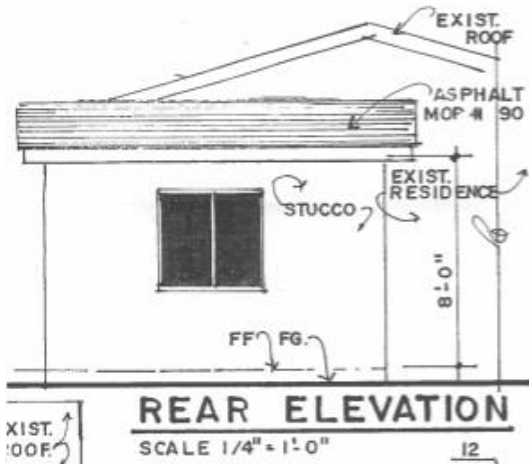
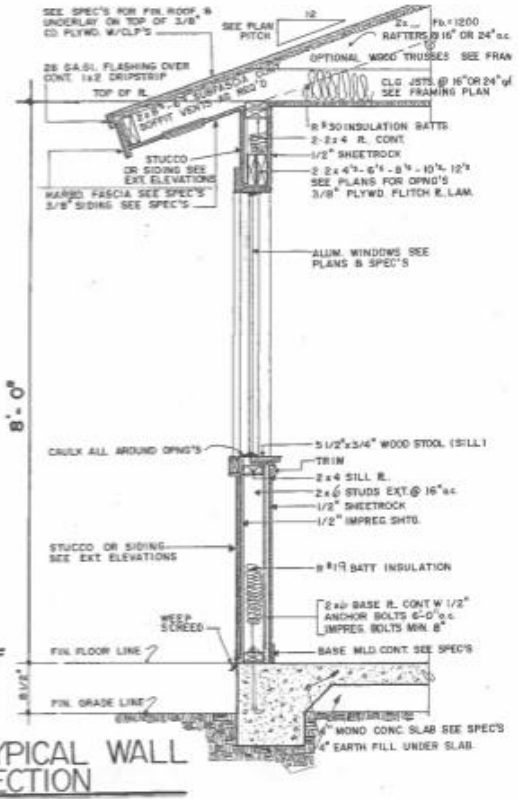
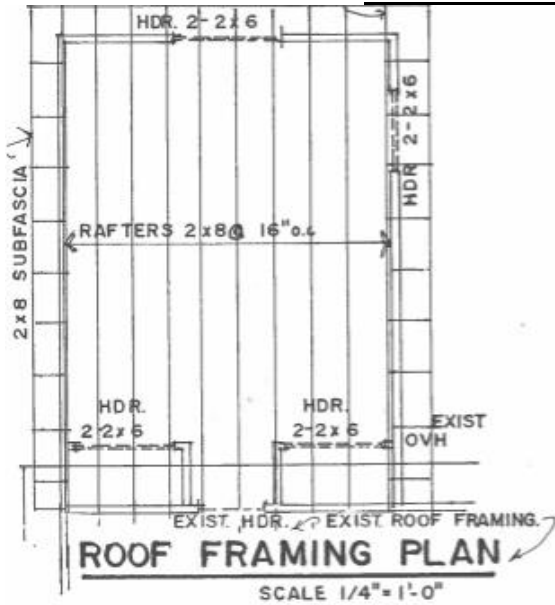
- *The historic character of a property shall be retained and preserved. The removal of historic materials or alteration of features and spaces that characterize a property shall be avoided.*
- *New additions, exterior alterations, or related new construction will not destroy historic materials, features, and spatial relationships that characterize the property. The new work will be differentiated from the old and will be compatible with the historic materials, features, size, scale and proportion, and massing to protect the integrity of the property and its environment.*

The modifications are that the artificial landscaping be removed and replaced with living plant cover; that the landscaping meet the guidelines; and that no permits are issued until the landscaping is in compliance.

AERIAL MAP



PROPOSED ELEVATIONS



4652 CAPLES CIR.

SCALE