



ITEM 58

# Holstein Right-Of-Way Vacation

SURW25-00012



# Holstein R.O.W Vacation



Aerial

This map is designed for illustrative purposes only. The features depicted here are approximate and more site-specific studies may be required to draw accurate conclusions. Enlargements of this map to scales greater than its original can induce errors and may lead to misinterpretations of the data. The Planning & Inspections Department Planning Division makes no claim to its accuracy or completeness.



 Subject Property



# Holstein R.O.W Vacation



## ROW with Existing Development

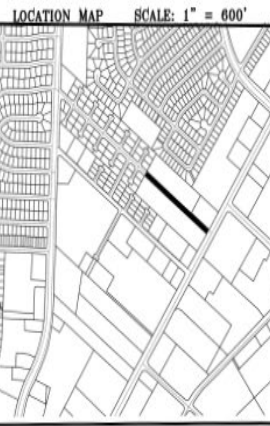
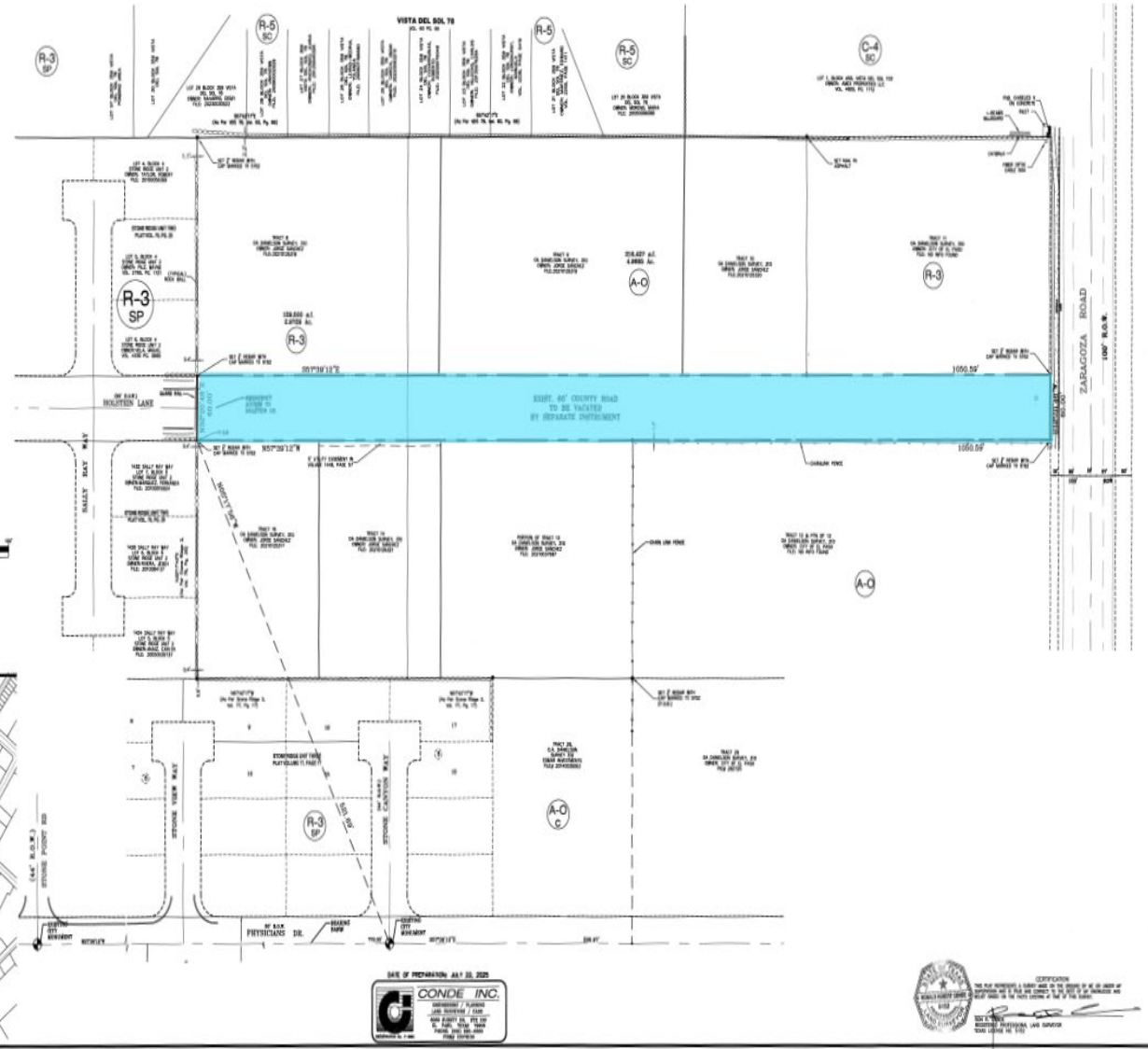
This map is designed for illustrative purposes only. The features depicted here are approximate and more site-specific studies may be required to draw accurate conclusions. Enlargements of this map to scales greater than its original can induce errors and may lead to misinterpretations of the data. The Planning & Inspections Department Planning Division makes no claim to its accuracy or completeness.



PLAT OF SURVEY

BEING A 60 FOOT COUNTY ROAD OUT OF  
O.A. DANIELSON SURVEY NO. 310;  
CITY OF EL PASO, EL PASO COUNTY, TEXAS  
Containing Approximately 1.4479± Acres

- NOTES
1. SET 1/2" CORNER N/104P MARKED TO SIZE ON ALL CORNERS UNLESS OTHERWISE NOTED.
  2. ALL NOTES AND DIMENSIONS DESCRIBE THE EXISTING SURVEY.
  3. A METRIC AND ENGLISH DESCRIPTION OF EVERY LINE COMPARES THE DIMENSIONS.



DATE OF PREPARATION: JULY 22, 2022

**CONDE INC.**  
SURVEYING & ENGINEERING  
10000 W. HUNTERS TRAIL, SUITE 100  
DALLAS, TEXAS 75244  
TEL: 972.980.1234  
WWW.CONDEINC.COM

CERTIFICATE

I, **JOHN CONDE**, Surveyor General for the State of Texas, do hereby certify that the above is a true and correct copy of the original survey as filed in my office.

JOHN CONDE  
Surveyor General for the State of Texas

Survey



Subject  
Property

# Public Input

- Notice of public hearing was published in the El Paso Times on October 2, 2025.
- Notices were mailed to property owners within 200 feet on September 29, 2025.
- The Planning Division has received one call of inquiry regarding the vacation request.





## Recommendation

- Staff recommends **approval** of Holstein ROW Vacation.
- CPC recommended approval (7-1) of the vacation request.



## Mission

Deliver exceptional services to support a high quality of life and place for our community



## Vision

Develop a vibrant regional economy, safe and beautiful neighborhoods and exceptional recreational, cultural and educational opportunities powered by a high performing government



## Values

Integrity, Respect, Excellence, Accountability, People