



ITEM

# 5545 Westside Drive Special Permit

PZST20-00008

**Strategic Goal 3.**

Promote the Visual Image of  
El Paso





# PZST20-00008



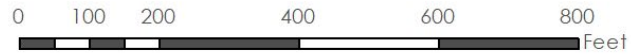
## Aerial



This map is designed for illustrative purposes only. The features depicted here are approximate and more site-specific studies may be required to draw accurate conclusions. Enlargements of this map to scales greater than its original can induce errors and may lead to misinterpretations of the data. The Planning & Inspections Department Planning Division makes no claim to its accuracy or completeness.



 Subject Property





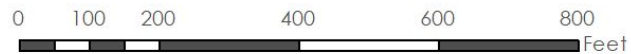
# Existing Zoning



This map is designed for illustrative purposes only. The features depicted here are approximate and more site-specific studies may be required to draw accurate conclusions. Enlargements of this map to scales greater than its original can induce errors and may lead to misinterpretations of the data. The Planning & Inspections Department Planning Division makes no claim to its accuracy or completeness.

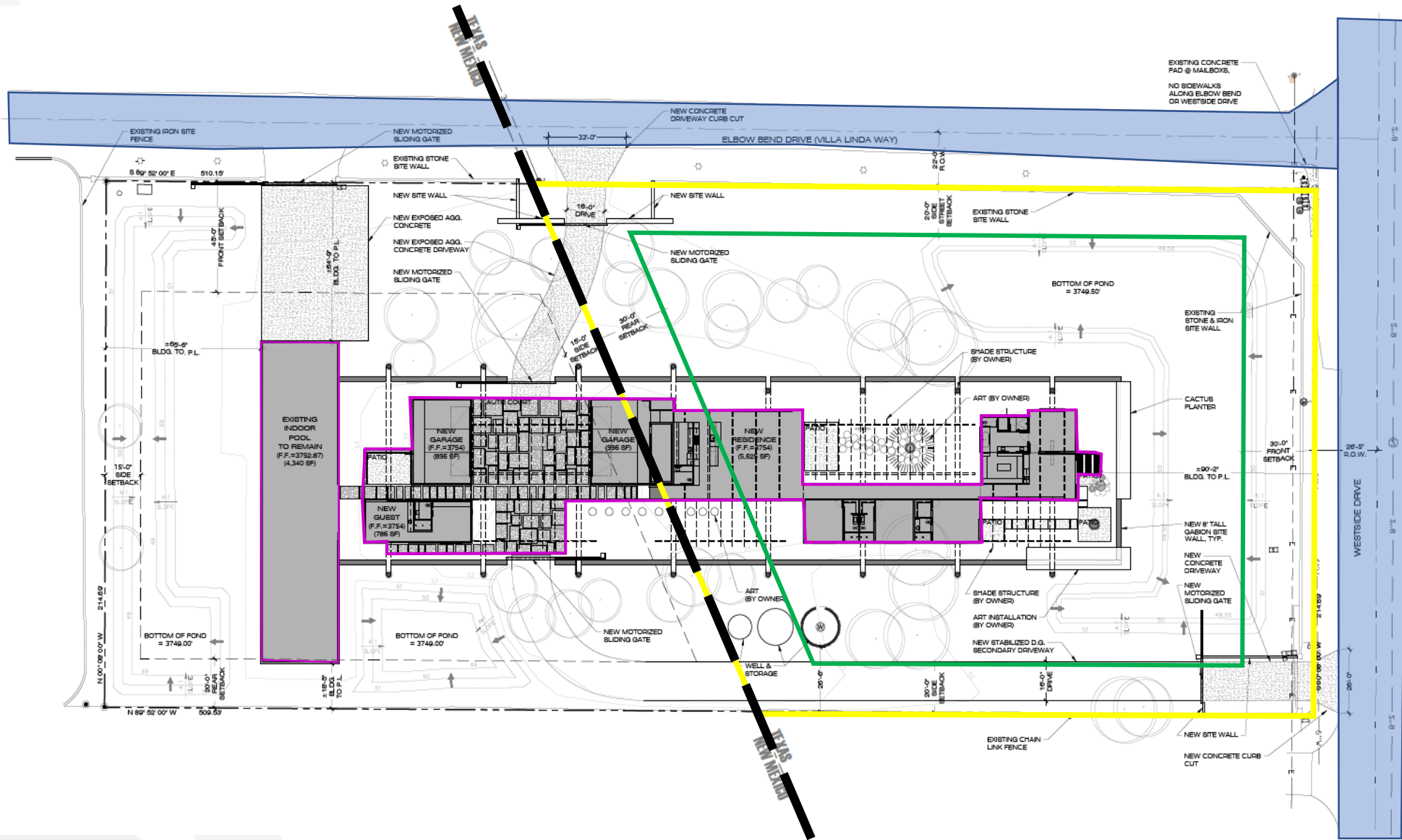


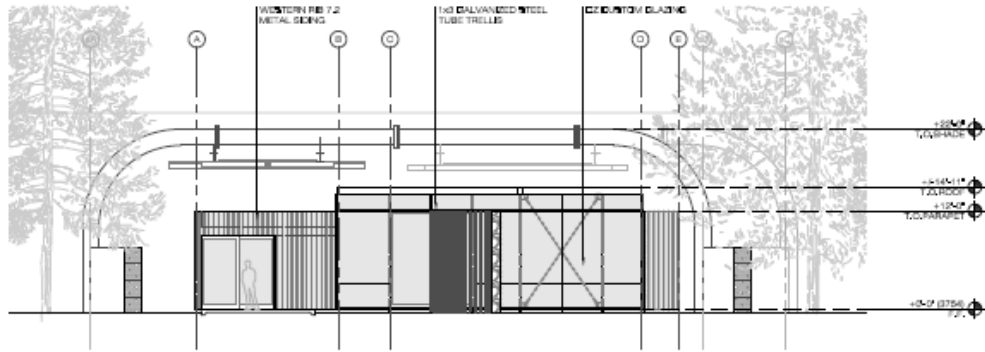
Subject Property





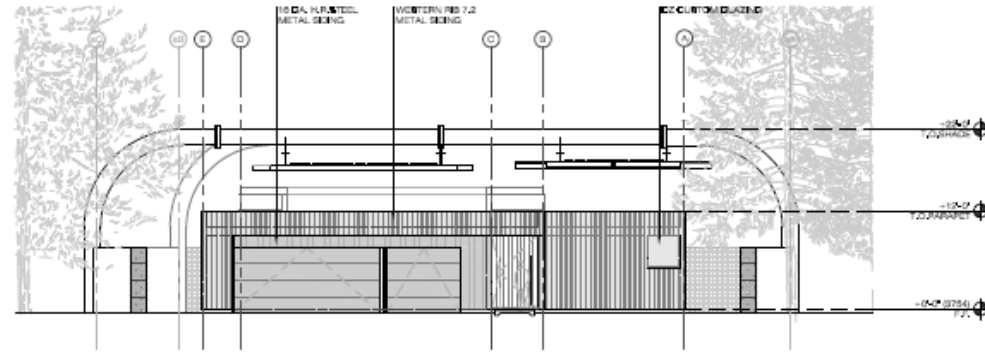
# Detailed Site Plan





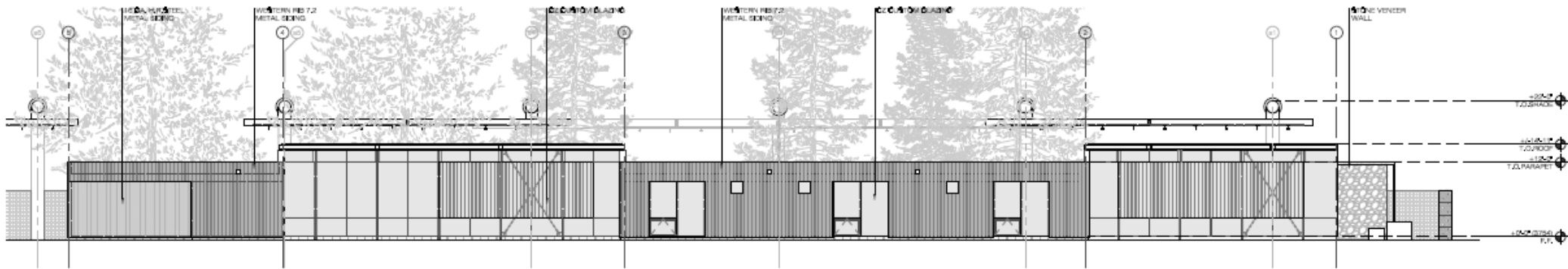
4 | MAIN RESIDENCE: EAST ELEVATION

SCALE: 1/8"=1'-0"



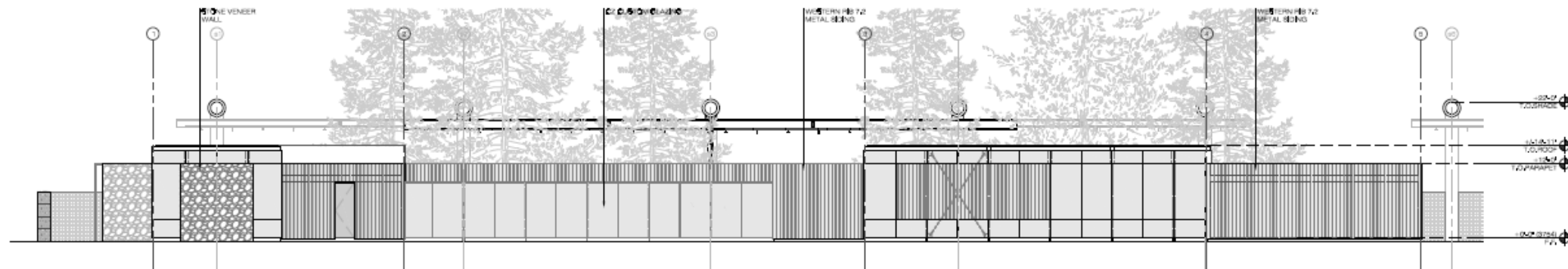
3 | MAIN RESIDENCE: WEST ELEVATION

SCALE: 1/8"=1'-0"



2 | MAIN RESIDENCE: SOUTH ELEVATION

SCALE: 1/8"=1'-0"



1 | MAIN RESIDENCE: NORTH ELEVATION

SCALE: 1/8"=1'-0"

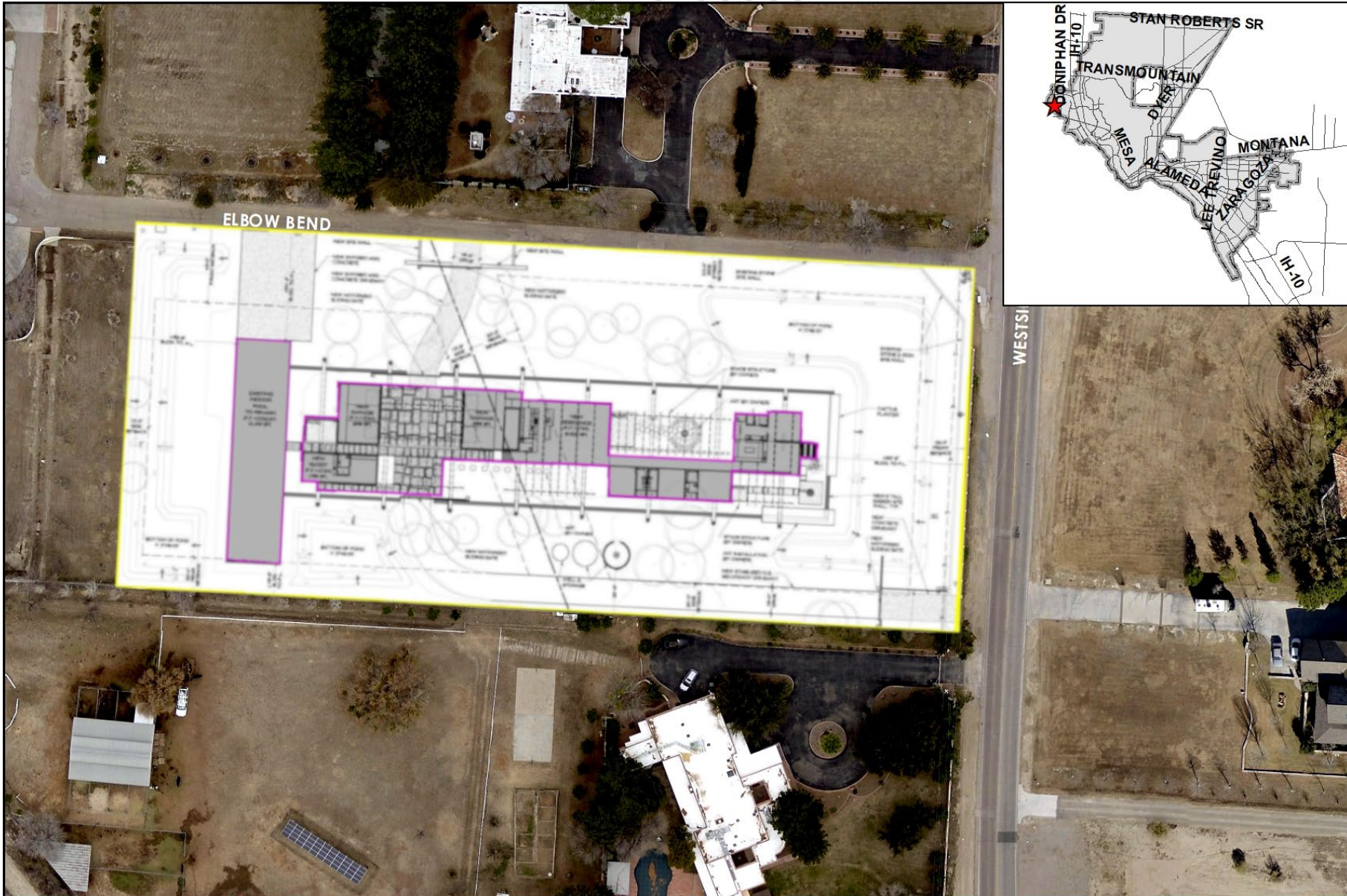
# Elevations



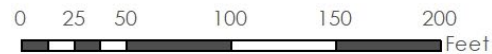
# PZST20-00008



## Aerial with Site Plan



This map is designed for illustrative purposes only. The features depicted here are approximate and more site-specific studies may be required to draw accurate conclusions. Enlargements of this map to scales greater than its original can induce errors and may lead to misinterpretations of the data. The Planning & Inspections Department Planning Division makes no claim to its accuracy or completeness.





# Subject Property





# Surrounding Development



N



W

S

E





# Public Input

- The Planning Division has not received any communications in support nor opposition to the request.







## Recommendation

- CPC and staff recommend approval of the special permit request.





## Mission

Deliver exceptional services to support a high quality of life and place for our community



## Vision

Develop a vibrant regional economy, safe and beautiful neighborhoods and exceptional recreational, cultural and educational opportunities powered by a high performing government



## Values

Integrity, Respect, Excellence, Accountability, People