

ITEM 30

Robert Alva Easement Vacation

SUET20-00001



Strategic Goal 3.

Promote the Visual
Image of El Paso

Robert Alva Easement Vacation



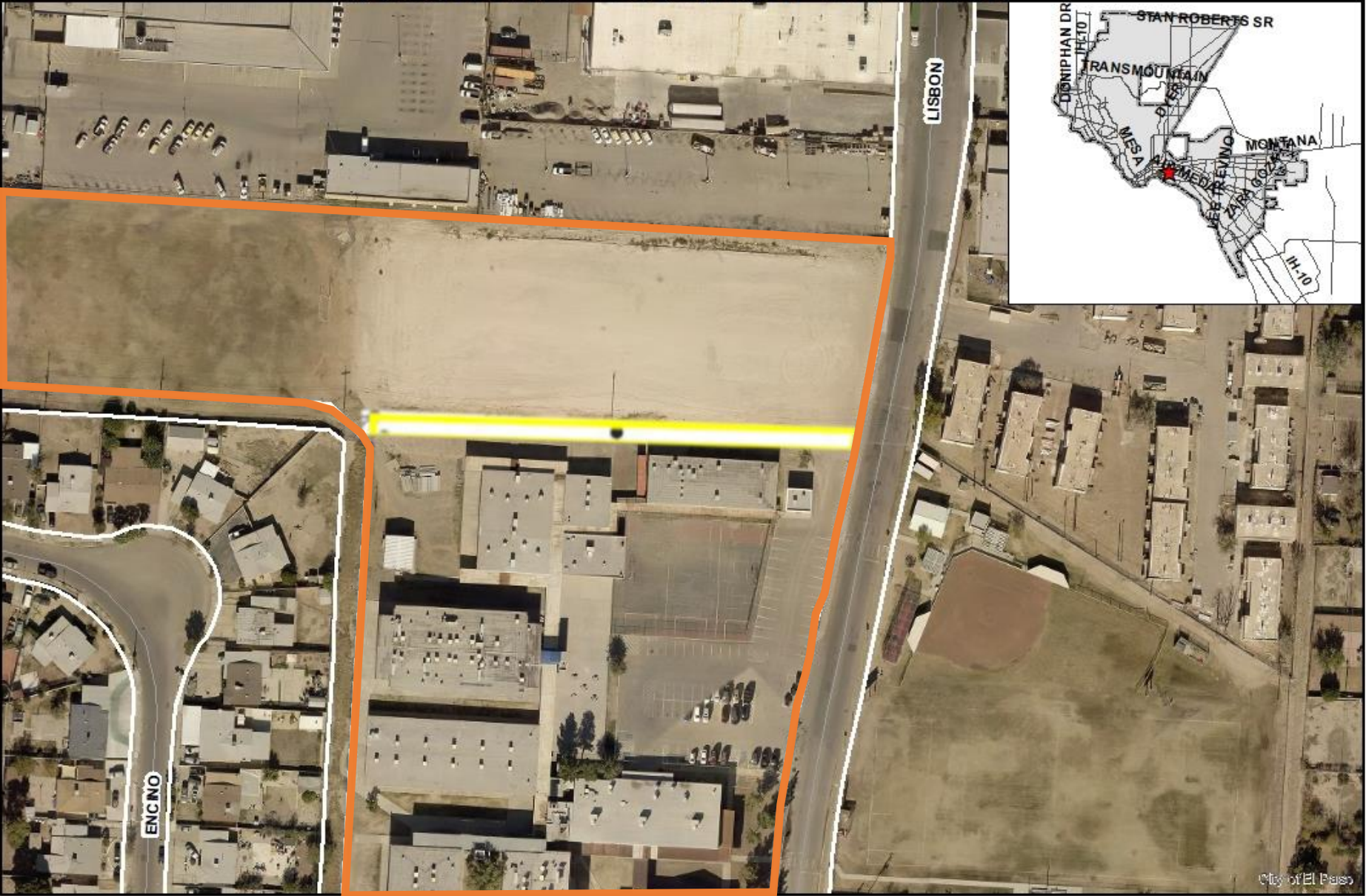
This map is designed for illustrative purposes only. The features depicted here are approximate and more site-specific studies may be required to draw accurate conclusions. Enlargements of this map to scales greater than its original can induce errors and may lead to misinterpretations of the data. The Planning & Inspection Department Planning Division makes no claim to its accuracy or completeness.



 Subject Property
 Streets



Robert Alva Easement Vacation



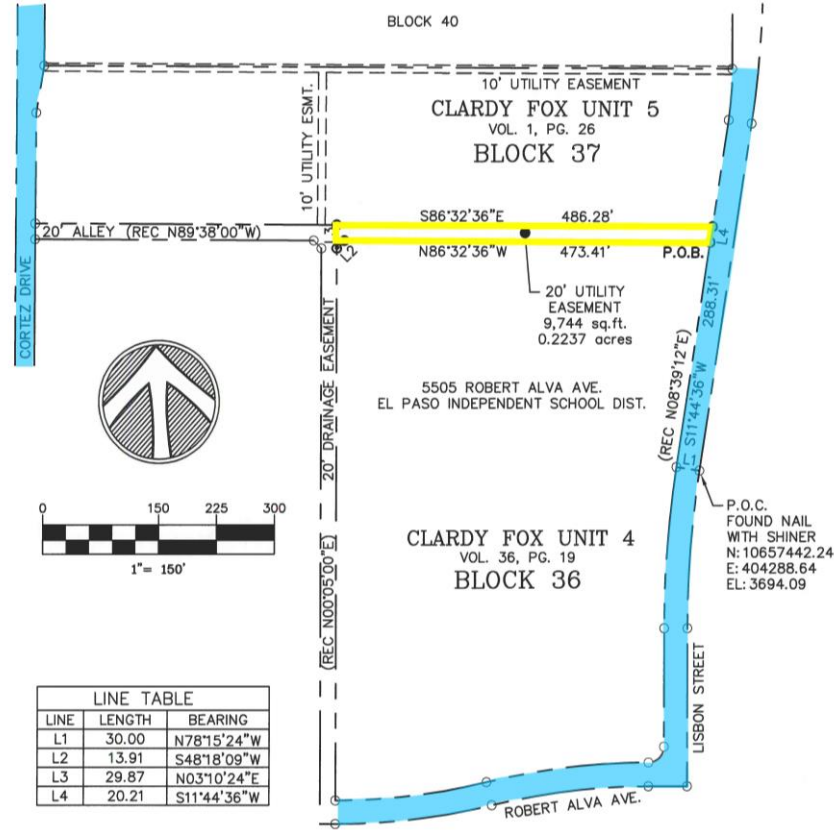
Aerial with Proposed Easement

The map is designed for illustrative purposes only. The features depicted here are approximate and more site-specific studies may be required to draw accurate conclusions. Enlargements of this map to scales greater than its original can introduce errors and may lead to misinterpretations of the data. The Planning & Inspections Department Planning Division makes no claim to its accuracy or completeness.



— Streets





NOTES:

1. BEARING BASIS: U.S. STATE PLANE COORDINATE SYSTEM, TEXAS CENTRAL 4203, NAD 1983 DATUM, AS DERIVED USING GPS METHODS VIA RTK NETWORK ESTABLISH BY WESTERN DATA, EL PASO ISLAND. ALL DISTANCES EXPRESSED IN U.S. SURVEY FEET SCALED TO SURFACE.
2. THIS PROPERTY MAY BE SUBJECT TO EASEMENT WHETHER OF RECORD NOT. (NOT SHOWN).
3. A METES AND BOUNDS DESCRIPTION OF EVEN DATE ACCOMPANIES THIS PLAT.
4. ACCORDING TO THE FEDERAL EMERGENCY MANAGEMENT AGENCY FLOOD INSURANCE RATE MAP COMMUNITY PANEL NO 4802140040B, DATED OCTOBER 15, 1985, THIS PROPERTY IS IN FLOOD HAZARD ZONE C "AREAS OF MINIMAL FLOODING".



CERTIFICATION

I HEREBY CERTIFY THAT THIS MAP WAS MADE FROM AN ACTUAL ON THE GROUND SURVEY AND THAT THE MONUMENTATION SHOWN HEREON WERE FOUND AND/OR PLACED UNDER MY PERSONAL SUPERVISION. I ALSO CERTIFY THAT THIS SURVEY SUBSTANTIALLY COMPLIES







Recommendation

- Staff recommends approval of the 20' utility easement vacation.



Mission

Deliver exceptional services to support a high quality of life and place for our community



Vision

Develop a vibrant regional economy, safe and beautiful neighborhoods and exceptional recreational, cultural and educational opportunities powered by a high performing government



Values

Integrity, Respect, Excellence, Accountability, People