



Transportation Alternative Set-Aside (TASA) Applications

September 24, 2024



Strategic Plan Goal:

7) Enhance and Sustain El Paso's Infrastructure Network

Program

Transportation Alternatives Set-Aside (TASA) program provides funding for projects and activities defined as **transportation alternatives** including:

- On- and off-road **pedestrian and bicycle facilities**
- Infrastructure projects for improving non-driver access to **public transportation** and **enhanced mobility**
- Community improvement activities
- Environmental mitigation, trails that serve a transportation purpose, and **safe routes to school projects**

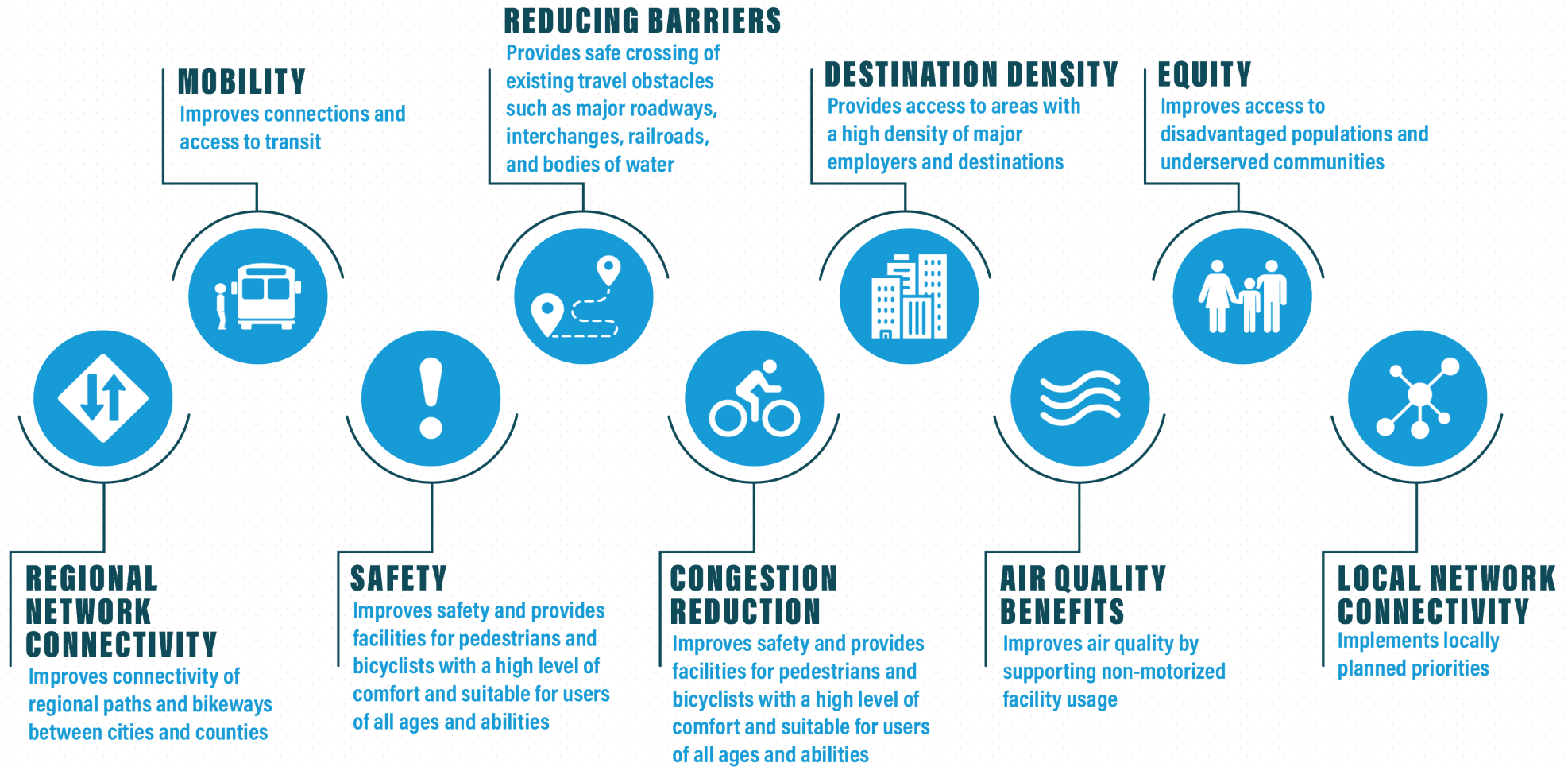
Eligibility

Facilities for Active Transportation (Pedestrians and Bicycles)

Active transportation projects are those that make non-motorized transport safe, convenient, and appealing. Such projects eligible for TA Set-Aside Program funding include the following activities:

- a) **Construction** of on-road and off-road trail facilities for pedestrians, bicyclists, and other non-motorized forms of transportation, including sidewalks, **bicycle infrastructure, pedestrian and bicycle signals, traffic-calming techniques, lighting** and other safety-related infrastructure, and transportation projects to achieve compliance with the **Americans with Disabilities Act** of 1990 (42 U.S.C. 12101 et seq.).
- b) Construction of infrastructure-related projects and systems that will provide **safe routes** for non-drivers, including children, older adults, and individuals with disabilities to access daily needs.
- c) Conversion and use of abandoned railroad corridors for trails for pedestrians, bicyclists, or other non-motorized transportation users.
- d) Bikeshare infrastructure and equipment purchases

Criteria

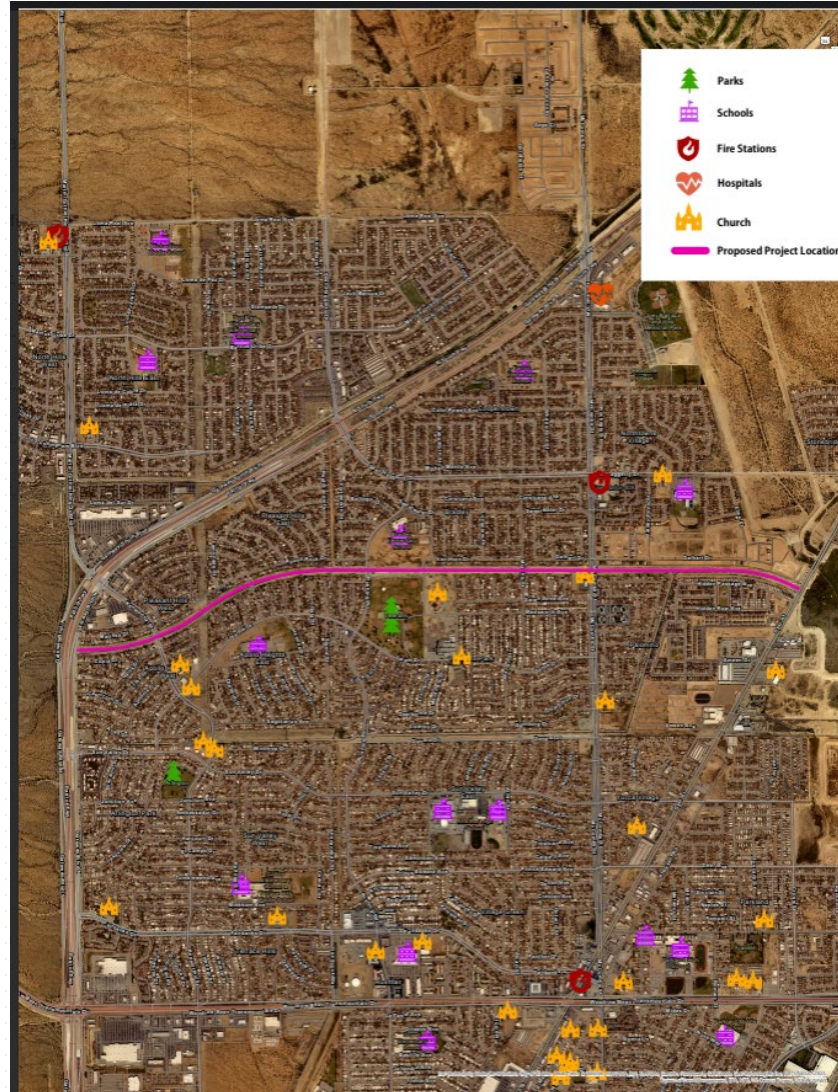


COEP TASA Applications

- Northeast Drain Shared Use Path
- Brown St Shared Use Path
- PDN Magoffin Ph 2 Shared Use Path
- Shadow Mountain Shared Use Path

Project Location – Northeast Drain Shared Use Path

Construct a 12 foot shared use path with landscaping and lighting along the Northeast Drain located north of Hidden Passage Ave from Dyer St to Gateway Blvd.



Project Location – Brown St Shared Use Path

Construct a shared use path on Brown St from I-10 to Lost Padre Mine



Project Location – PDN Magoffin Ph 2 Shared Use Path

Construct a shared use path on Magoffin Ave starting at the terminus of the PDN Magoffin Ph 1 Shared Use Path (under construction) at Cotton St and continuing to Palm Ave.



Project Location – Shadow Mountain Shared Use Path

Construct a shared use path on Shadow Mountain Dr. starting at Mesa St. and ending at Silver Springs Dr.



Project Scope

- Projects would include:
 - Pedestrian and bicycle path with signage
 - Landscaping
 - ADA curb ramps
 - Illumination



Amount and Source of Funding

Northeast Drain Shared Use Path

- Estimated total project cost: \$8.8M
- Estimated Federal participation amount requested \$7.0M
- Estimated **City participation** amount of **\$1.8M**

PDN Magoffin Ph 2 Shared Use Path

- Estimated total project cost: \$5.8M
- Estimated Federal participation amount requested \$4.7M
- Estimated **City participation** amount of **\$1.2M**

Brown St Shared Use Path

- Estimated total project cost: \$4.1M
- Estimated Federal participation amount requested \$3.3M
- Estimated **City participation** amount of **\$820K**

Shadow Mountain Shared Use Path

- Estimated total project cost: \$3.1M
- Estimated Federal participation amount requested \$2.5M
- Estimated **City participation** amount of **\$615K**



THANK YOU