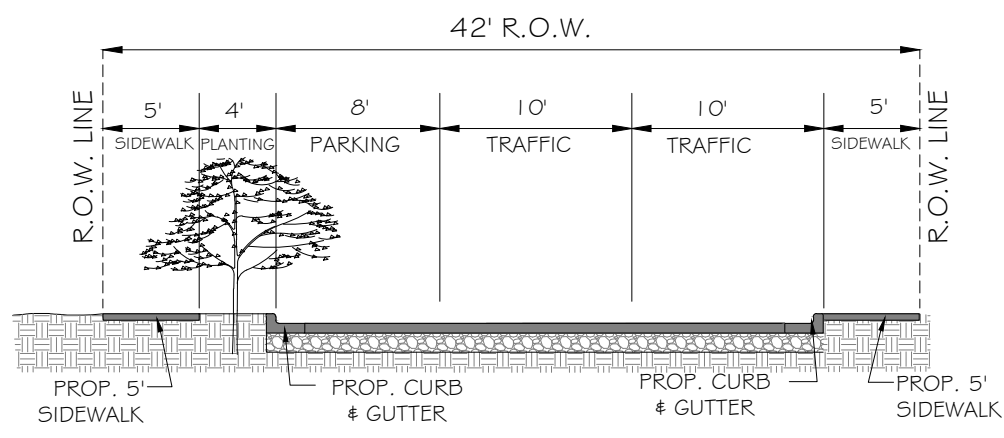
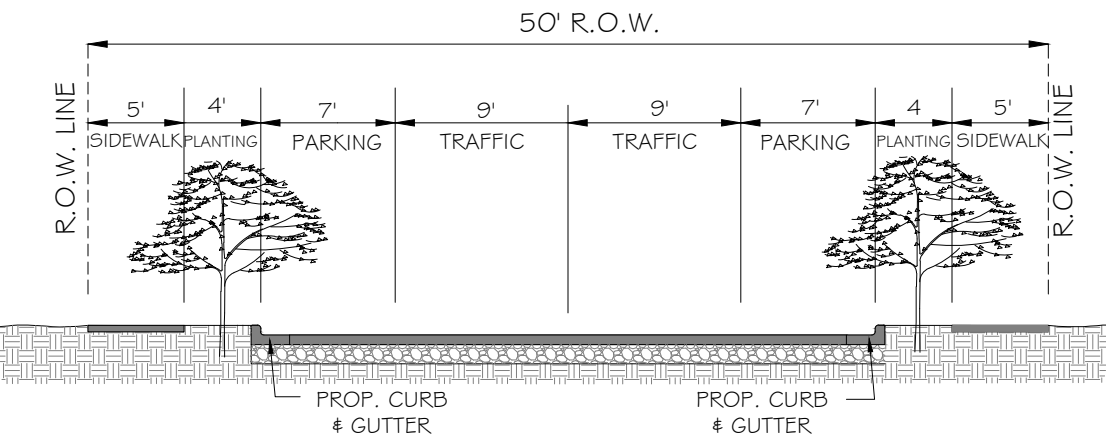


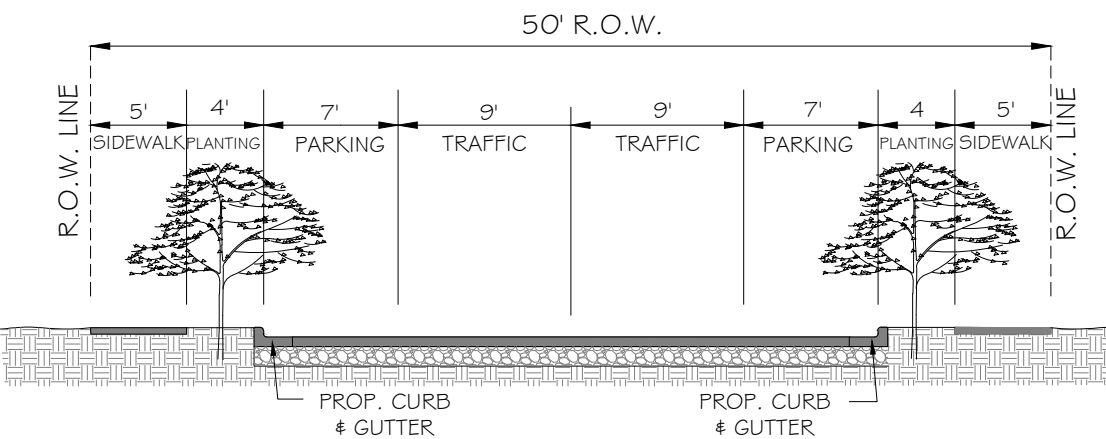
PROPOSED VIN MADRID STREET
(TYPICAL 35 ST 33.5-24)
(RESIDENTIAL COLLECTOR)
NOT TO SCALE



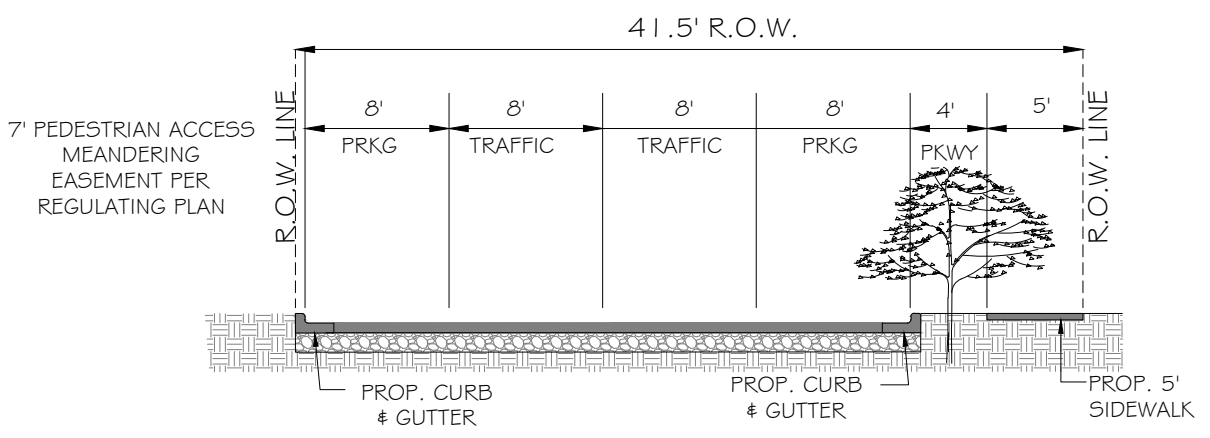
PROPOSED VIN FARO LANE
(TYPICAL 11A ST 42-28)
(RESIDENTIAL COLLECTOR)
NOT TO SCALE



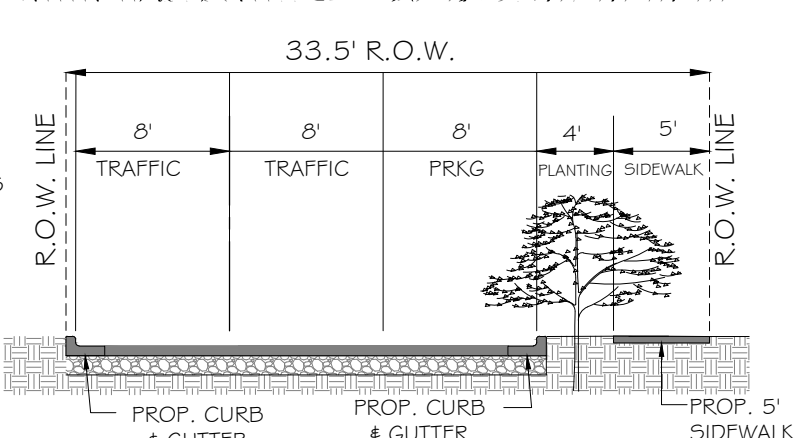
PROPOSED VIN FARO LANE
(TYPICAL 10B ST 50-32)
(RESIDENTIAL COLLECTOR)
NOT TO SCALE



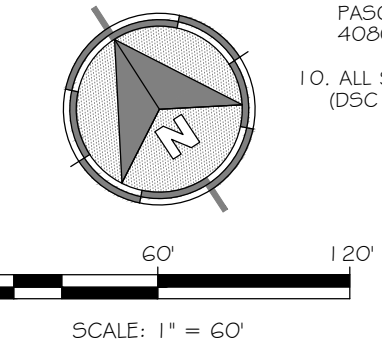
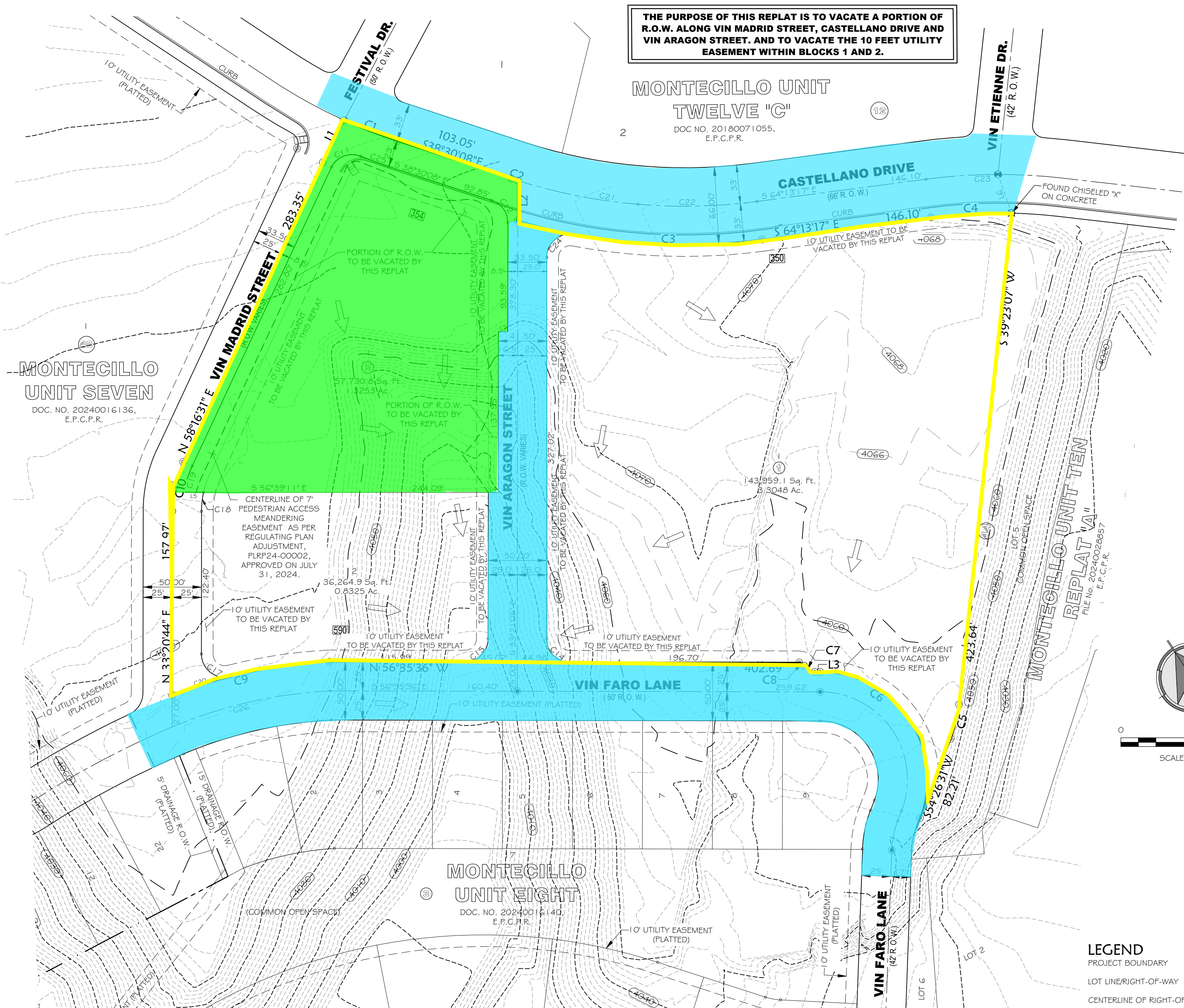
PROPOSED VIN ARAGON STREET
(TYPICAL 10B ST 50-32)
(RESIDENTIAL COLLECTOR)
NOT TO SCALE



PROPOSED VIN ARAGON STREET
(TYPICAL 10G ST 41.5-32)
(RESIDENTIAL COLLECTOR)
NOT TO SCALE



PROPOSED VIN ARAGON STREET
(TYPICAL 35 ST 33.5-24)
(RESIDENTIAL COLLECTOR)
NOT TO SCALE



LINE #	BEARING	DISTANCE
L1	N60°06'38"E	40.49
L2	N33°21'05"E	34.48
L3	S56°35'36"E	4.70
L4	S56°39'12"E	8.50
L5	N56°39'11"W	16.82
L6	N14°04'54"E	35.09
L7	N56°38'55"W	8.00

CURVE	RADIUS	DELTA ANGLE	ARC LENGTH	CHORD BEARING	CHORD LENGTH
C1	450.00	6°13'45"	48.92	S35°23'16"E	48.90
C2	475.00	0°41'07"	5.68	S38°50'41"E	5.68
C3	508.00	23°52'00"	211.61	S52°17'17"E	210.08
C4	442.00	8°57'32"	69.11	N59°44'31"W	69.04
C5	115.00	15°03'24"	30.22	N46°54'49"E	30.13
C6	92.00	111°02'07"	178.29	N01°04'32"W	151.67
C7	10.00	62°10'55"	10.85	S25°30'09"E	10.33
C8	5.00	62°10'55"	5.43	N25°30'09"W	5.16
C9	425.00	18°40'34"	138.53	N62°48'10"W	137.92
C10	100.00	24°55'46"	43.51	N45°48'38"E	43.17
C11	20.00	83°42'30"	29.22	N76°59'41"W	26.69
C12	20.00	71°5'11"	25.08	N02°34'32"W	23.47
C13	508.00	5°38'59"	50.09	S43°10'46"E	50.07
C14	20.00	89°56'40"	31.40	S11°37'16"E	28.27
C15	20.00	90°03'20"	31.44	N78°22'44"E	28.30
C16	425.00	11°35'24"	85.97	N65°15'35"W	85.82
C17	20.00	104°24'02"	36.44	S18°51'17"E	31.61
C18	75.00	12°28'36"	16.33	S39°34'29"W	16.30
C19	91.50	14°44'13"	23.53	S50°54'24"W	23.47
C21	475.00	12°41'04"	105.16	S45°31'47"E	104.94
C22	475.00	12°20'58"	102.38	S58°02'48"E	102.18
C23	475.00	7°27'55"	61.89	N60°29'19"W	61.85
C24	20.00	100°36'40"	35.13	S83°40'25"W	30.79
C25	473.00	3°06'20"	25.64	S36°56'58"E	25.63
C26	400.00	20°00'16"	139.66	N69°33'19"W	138.95

- LEGEND**
- PROJECT BOUNDARY
 - LOT LINE/RIGHT-OF-WAY
 - CENTERLINE OF RIGHT-OF-WAY
 - EASEMENT LINE
 - 1' CONTOUR INTERVAL
 - 5' CONTOUR INTERVAL
 - EXISTING DRAINAGE FLOW
 - FOUND CITY MONUMENT
 - PROPOSED CITY MONUMENT
 - SET 1/2" REBAR WITH SURVEY CAP NO. 'TX 6223'
 - LOT NUMBER
 - BLOCK NUMBER

PRELIMINARY PLAT

DATE OF PREPARATION: SEPTEMBER 2024

BROCK & BUSTILLOS INC.
CONSULTING CIVIL ENGINEERS
LAND SURVEYORS
TBP# REG. NO. F-737
TBL# REG. NO. 101314-00

417 EXECUTIVE CENTER
EL PASO, TEXAS 79902
www.brockbustillos.com
PH 915.542.4900
FAX 915.542.2667

JOB NO. 07004-058A

17, 2025, 11:47 AM
 5170004-058A-MONTECILLO UNIT 8 REPLAT OF BKS 1 & 2 07004-058A-C3907004-058A-MONTECILLO UNIT 8 REPLAT.dwg