



**EL PASO**  
MUSEUM OF  
**HISTORY**

# Museum Deaccession Nominations 2024 Part I

# Proposed deaccession nominations of (34 items)

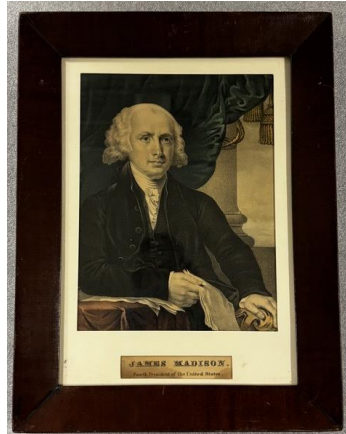
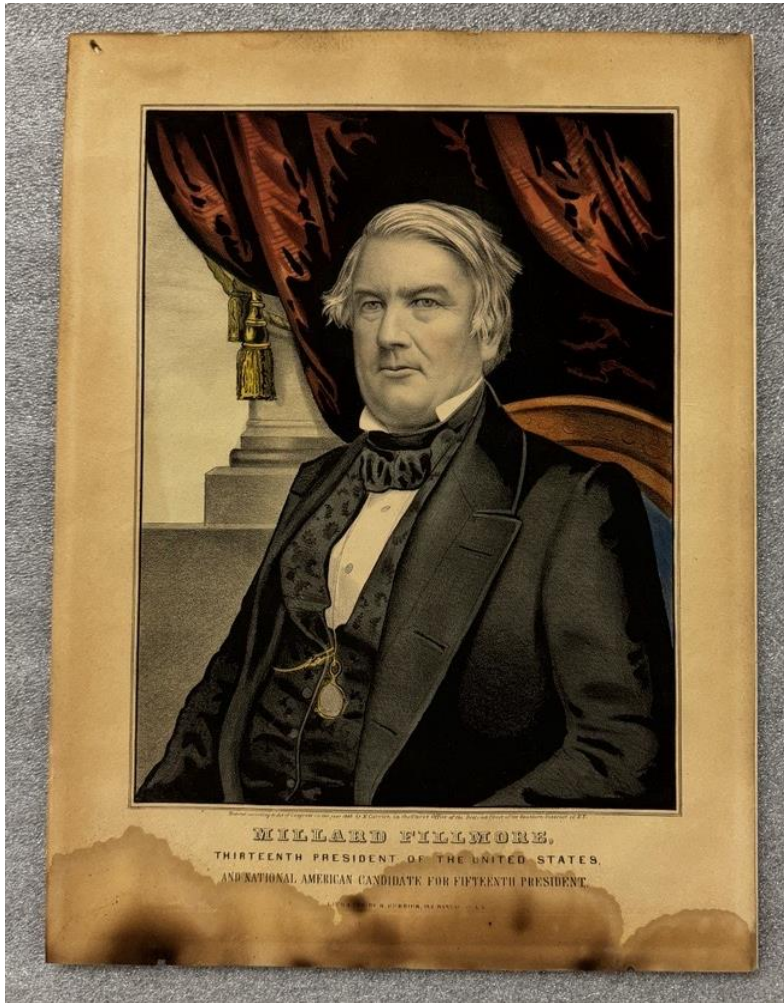
EPMH selected these items for nomination based on their lack of cultural and interpretive relevance to advance the mission of the institution as well as their overall condition.

Item description	Accession Number	Component Parts	Condition	Reason	2D/3D	Provenance
Prints	59-206-1 - 16		16 Poor	Does not advance mission, unknown provenance, poor condition	2D	Unknown
Unknown	H1986-003-277	20>	Poor	DNAM, poor condition	3D	Bennett, Ruth Eleanor
Pillow	H1993-001-188D		3 Poor	DNAM, poor condition	3D	El Paso Sounty Historical Society
Model	C 255		4 Poor	Duplicate, poor condition	3D	Inherited from EPMA Carriage House
Pouch	C 152		1 Poor	Duplicate, poor condition	3D	Inherited from EPMA Carriage House
Unknown	C 705		1 Poor	Unknown provenance, poor condition	3D	Inherited from EPMA Carriage House
Unknown	C 151		1 Poor	Unknown provenance, poor condition	3D	Inherited from EPMA Carriage House
Belt	C 211	1>	Poor	Damaged beyond means for conservation, poor condition	3D	Inherited from EPMA Carriage House
Doll	77-17-12A-C		3 Poor	DNAM, unknown provenance, poor condition	3D	Unknown
Unknown	H2005-007-015	1>	Poor	DNAM, damaged beyond means for conservation, poor condition	3D	Viera, Graciela
Unknown	C 39		Poor	DNAM, unknown object, poor condition	3D	Inherited from EPMA Carriage House
Dolls	77-17-18, 26, 27	20>	Poor	DNAM, duplicates, poor condition	3D	Unknown
Saddles	H1983-010-001, 002		3 Poor	Damaged beyond means for conservation, poor condition	3D	Davis, Helen (Mrs. Leslie)
Hay Crook	H1980-008-019		1 Poor	Unsolicited and unethical retrieval from the property of Ed Drury Neblett, poor condition	3D	Unsolicited and unethical retrieval from the property of Ed Drury Neblett



# Prints

Does not advance mission, unknown provenance, poor condition





# Unknown

Does not advance mission, poor condition



# Pillow with shredded fabric

Does not advance mission, duplicate, poor condition





# Model

Duplicate, poor condition





# Pouch

Duplicate, poor condition





# Unknown

Does not advance mission, poor condition





# Unknown

Unknown object/provenance, poor condition



# Belt

Damaged beyond means for conservation, poor condition





# Dolls

Do not advance mission, unknown provenance, poor condition



# Unknown

Do not advance mission, damaged beyond means for conservation, poor condition





# Unknown

Do not advance mission, unknown object, poor condition



# Dolls

Does not advance mission, duplicates, poor condition





# Saddles

Damaged beyond means for conservation, poor condition





# Saddles

Damaged beyond means for conservation, poor condition





# Hay Crook

Unsolicited and unethical retrieval from the property of Ed Drury Neblett, poor condition



Questions?