



ITEM 52

Randolph and Blacker Avenue ROW Vacation

SURW23-00013



Strategic Goal 3.
Promote the Visual
Image of El Paso



Aerial

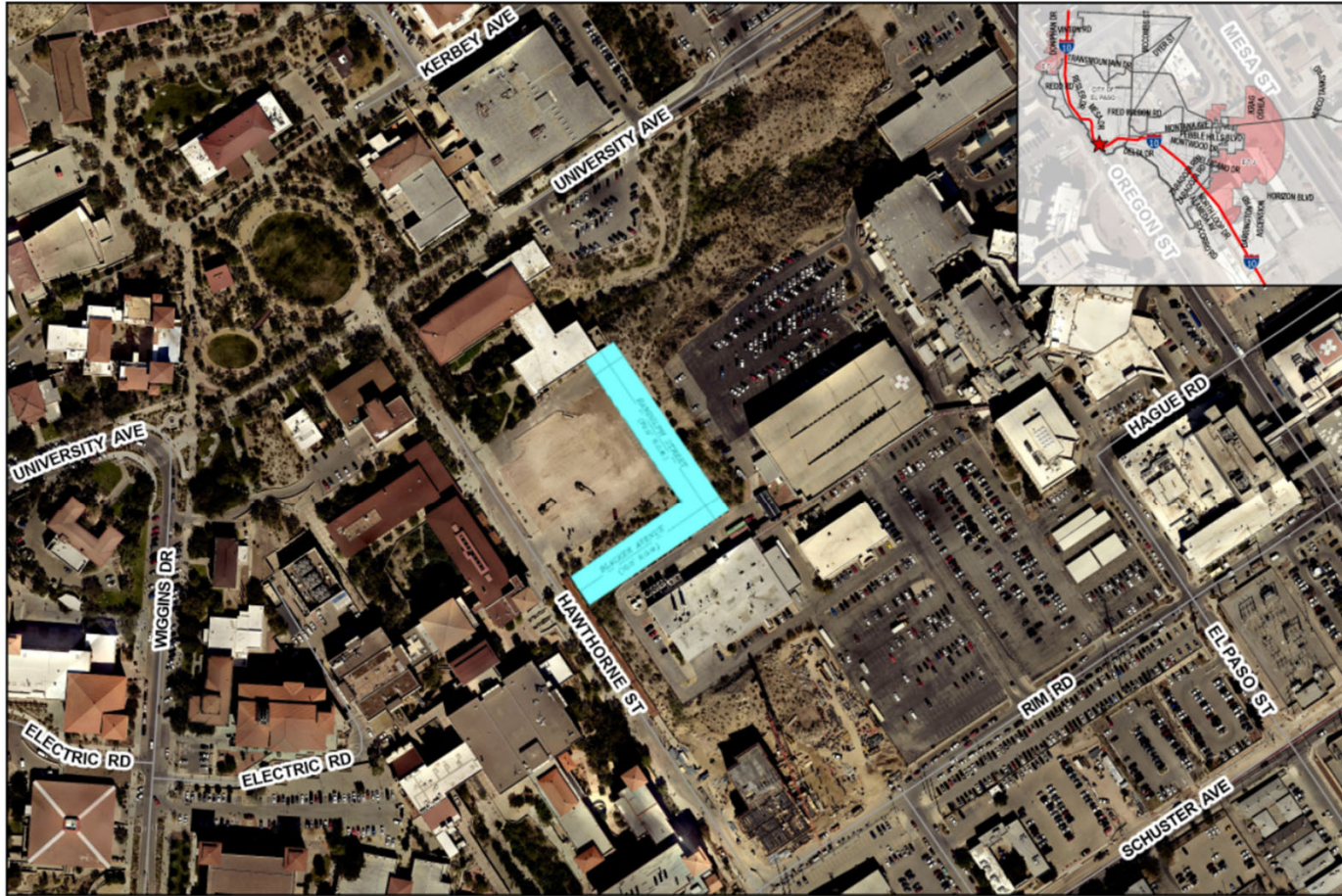
This map is designed for illustrative purposes only. The features depicted here are approximate and more site-specific studies may be required to draw accurate conclusions. Enlargement of this map to scales greater than its original can induce errors and may lead to misinterpretations of the data. The Planning & Inspections Department Planning Division makes no claim to its accuracy or completeness.



Subject Property

0 60 120 240 360 480
Feet





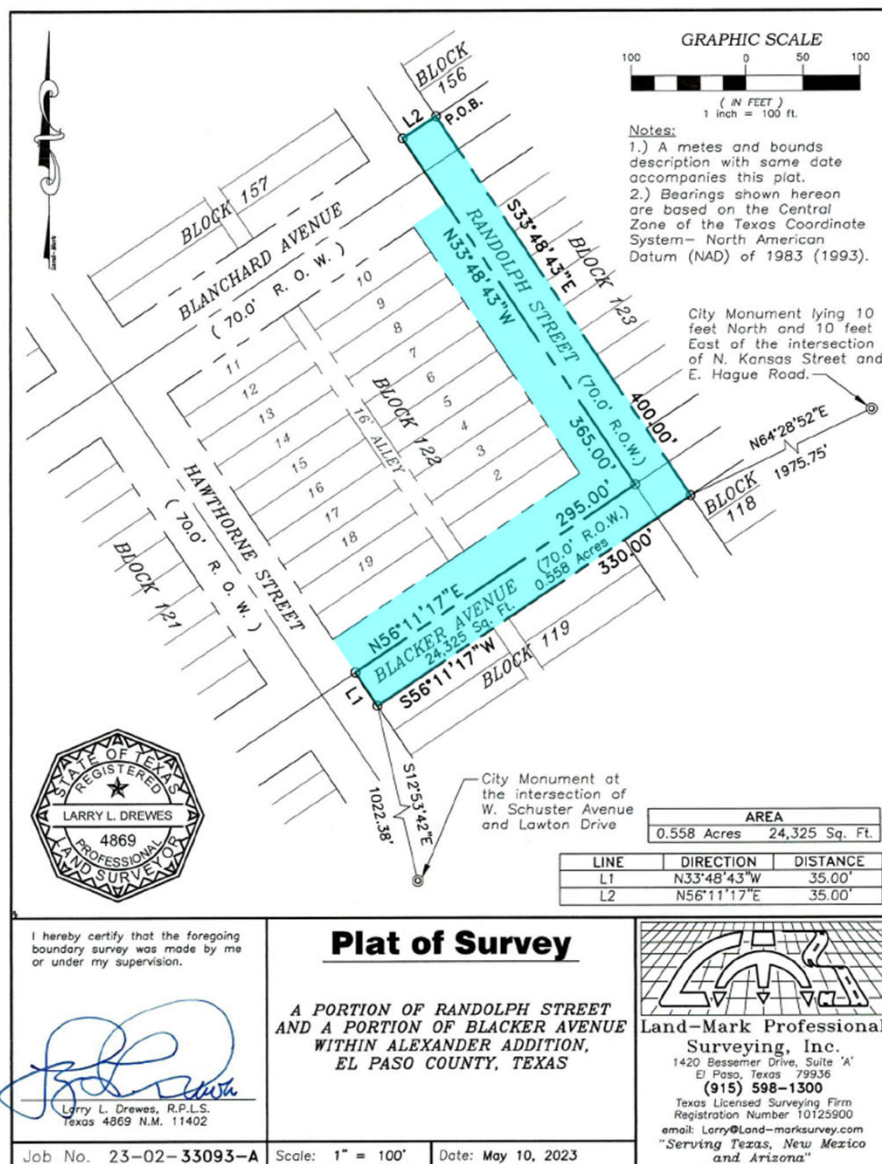
This map is designed for illustrative purposes only. The features depicted here are approximate and more site-specific studies may be required to draw accurate conclusions. Enlargements of this map to scales greater than its original can induce errors and may lead to misinterpretations of the data. The Planning & Inspections Department Planning Division makes no claim to its accuracy or completeness.



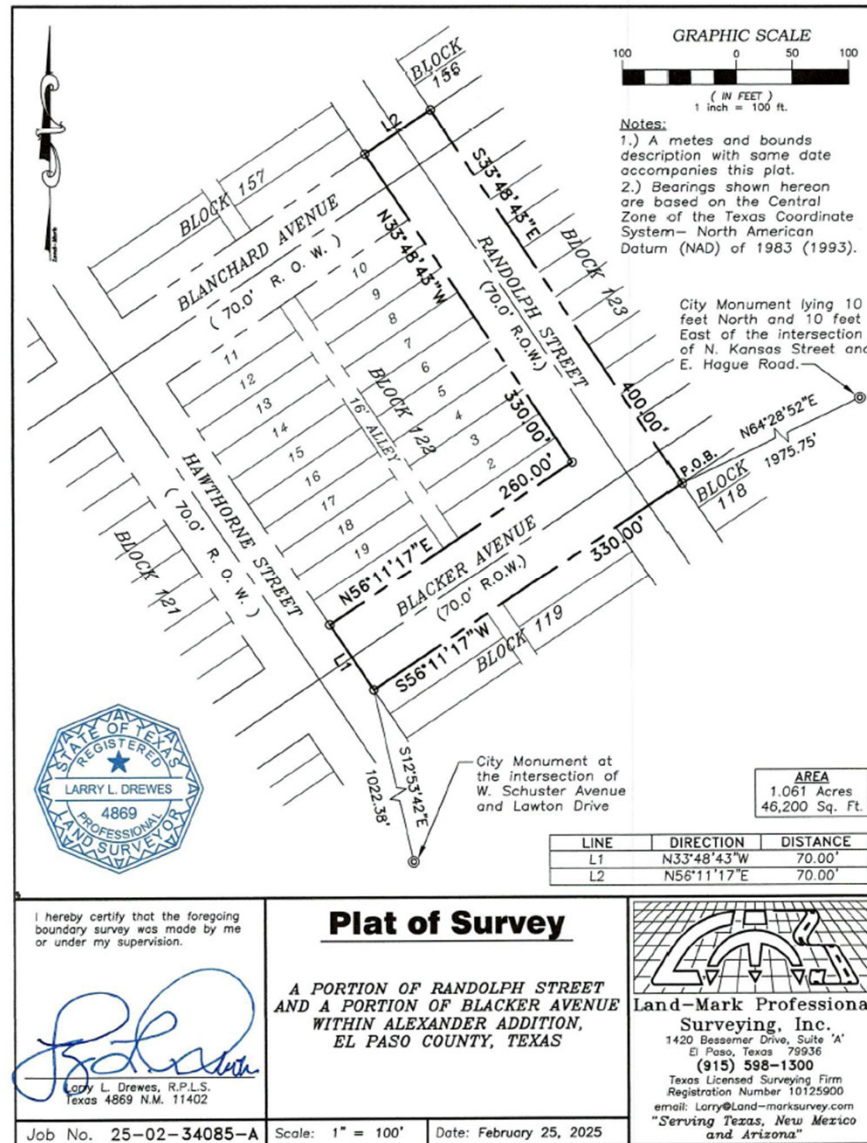
0 60 120 240 360 480
Feet



ROW with Existing Development



Previous
Survey



Current
Survey



Subject
Property

Public Input

- Notice of public hearing was published in the El Paso Times
- Notices were mailed to property owners within 200 feet
- The Planning Division has not received any communication in support of or opposition to the request.





Recommendation

- Staff and City Plan Commission recommends **approval** of the Randolph and Blacker Avenue ROW Vacation request



Mission

Deliver exceptional services to support a high quality of life and place for our community



Vision

Develop a vibrant regional economy, safe and beautiful neighborhoods and exceptional recreational, cultural and educational opportunities powered by a high performing government



Values

Integrity, Respect, Excellence,
Accountability, People