



**EL PASO
TRANSPORTATION
AUTHORITY**





MISSION STATEMENT

The El Paso Transportation Authority's (ETA) mission is to provide safe, reliable, and accessible transportation solutions that connect the rural communities of El Paso County. Through our fixed-route and ADA Paratransit services, we are committed to enhancing mobility, fostering regional cooperation, and improving the quality of life for all residents.



We've got you covered!

ETA Transit has six routes to serve you in rural El Paso County.



Go to elpasotransportationauthority.org for routes and information.

WHO IS THE EL PASO AREA TRANSPORTATION SERVICES, LGC?

- A Local Government Corporation created under Texas Transportation Code Section 431
- Formed by El Paso County
- Staffed by El Paso County Transit Operations Department
- Fiscal and Administrative Agent by Rio Grande Council of Governments
- Legal Services by Kemp Smith

HISTORY



- 1994 – Countywide Transit Plan completed
- 1995 – El Paso County secures Rural Transit District status and starts El Paso County Transit
- 2008 – Start New Mexico Park & Ride, Vanpool and Route 84
- 2015 – Start Mission Trail CMAQ funded bus route
- 2015 – Start El Paso County Regional Transit Study
- 2018 – first CNG bus purchased
- 2020 – El Paso Area Transportation Services, LGC created
- 2024 – Clint and Anthony join EPATS, services expanded, Route 84 discontinued, services rebranded at ETA from El Paso County Transit, paratransit begins
- 2025 – First Executive Director hired, Andale service begins

ADMINISTRATION

- 12 Members of the Board of Directors
 - 3 from El Paso County
 - 1 each from Clint, Anthony, Vinton, Horizon City, San Elizario
 - 1 each as ex-officio from El Paso MPO, Sun Metro, Socorro and WTEP
- Administrative Staff of 5
 - Executive Director
 - Associate Transportation Planner
 - Transit Planner
 - Administrative Specialist, Senior
 - Senior Transit Project Manager (Vacant)
- Access Advisory Committee of volunteer citizens
- All Services Contracted to Private Companies
 - Transdev – Paseo, Access, Andale
 - Enterprise Mobility - Vanamos

TRANSIT SERVICES PROVIDED IN 2026

- **Service Hours:** Mon-Fri 5 a.m. to 8:20 p.m.
- Saturday 7 a.m. to 7:21 p.m., Sunday 7 a.m. to 5:30 p.m. Closed 7 holidays.
- **Paseo Fixed Route Service**
 - 6 routes using 15 peak buses
 - Buses every 90-150 minutes
 - Service to Anthony, Vinton, Socorro, San Elizario, Horizon City, Clint and unincorporated area
 - Limited service along Sun Metro Routes 5, 6, 12, 13, 52 and 60 in El Paso
 - Fare is \$1.50 one way, \$48.00 for monthly pass
- **Andale Microtransit Service** in Clint and San Elizario
- **Access Complementary Paratransit Service**
 - 6 peak buses
 - Door to door advanced reservation service, for those with disabilities
 - Fare is \$2.50 within service area, \$5.00 to/from El Paso
- **Vanamos Vanpool**
- **Bus Amenities**
 - Bike racks, security cameras, wheelchair ramps or lifts, wi-fi, heating and air conditioning

GOOD NEWS, RIDERS!

STARTING DECEMBER 22, 2025,

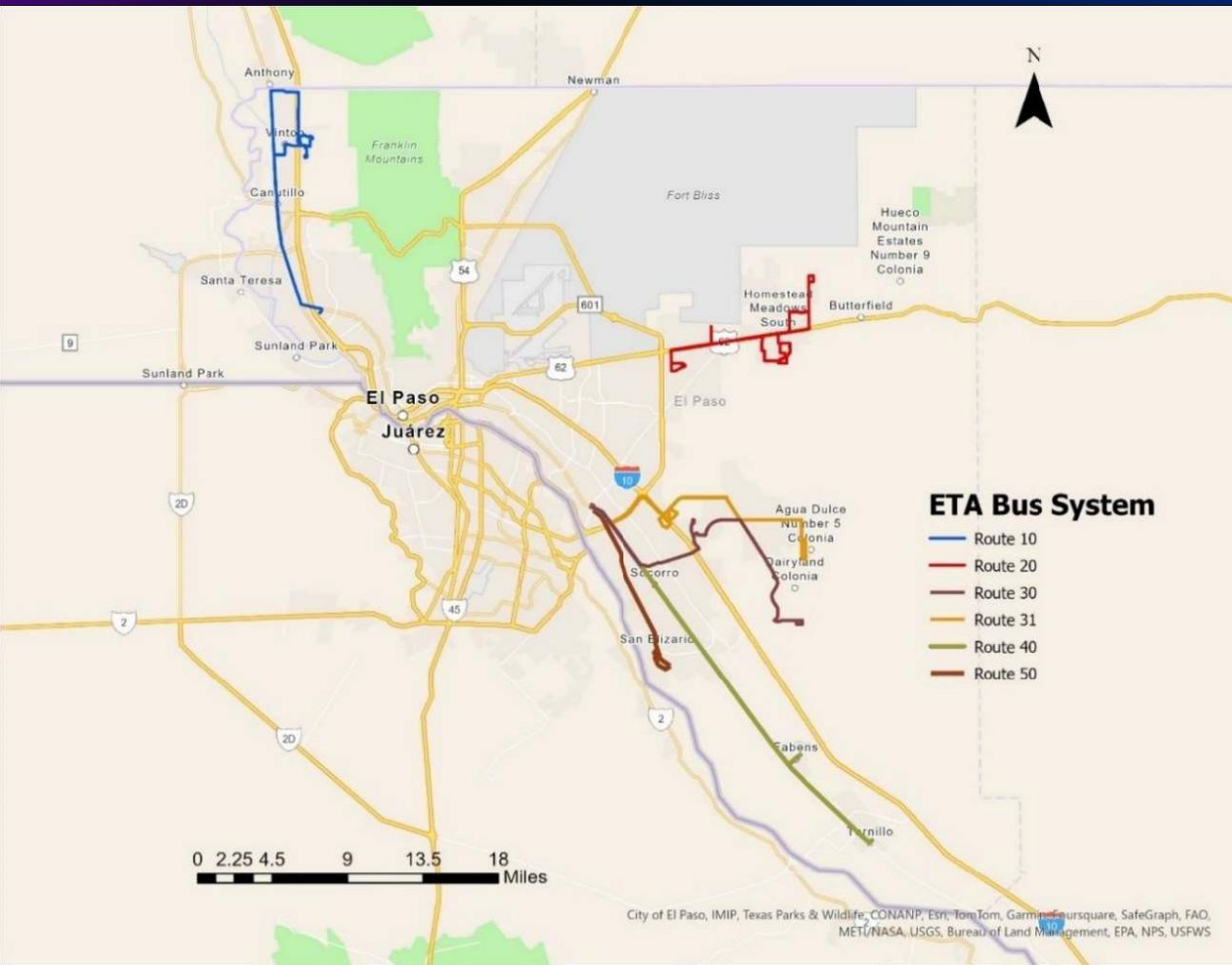
ALL ETA SERVICES ARE

FREE!



PASEO



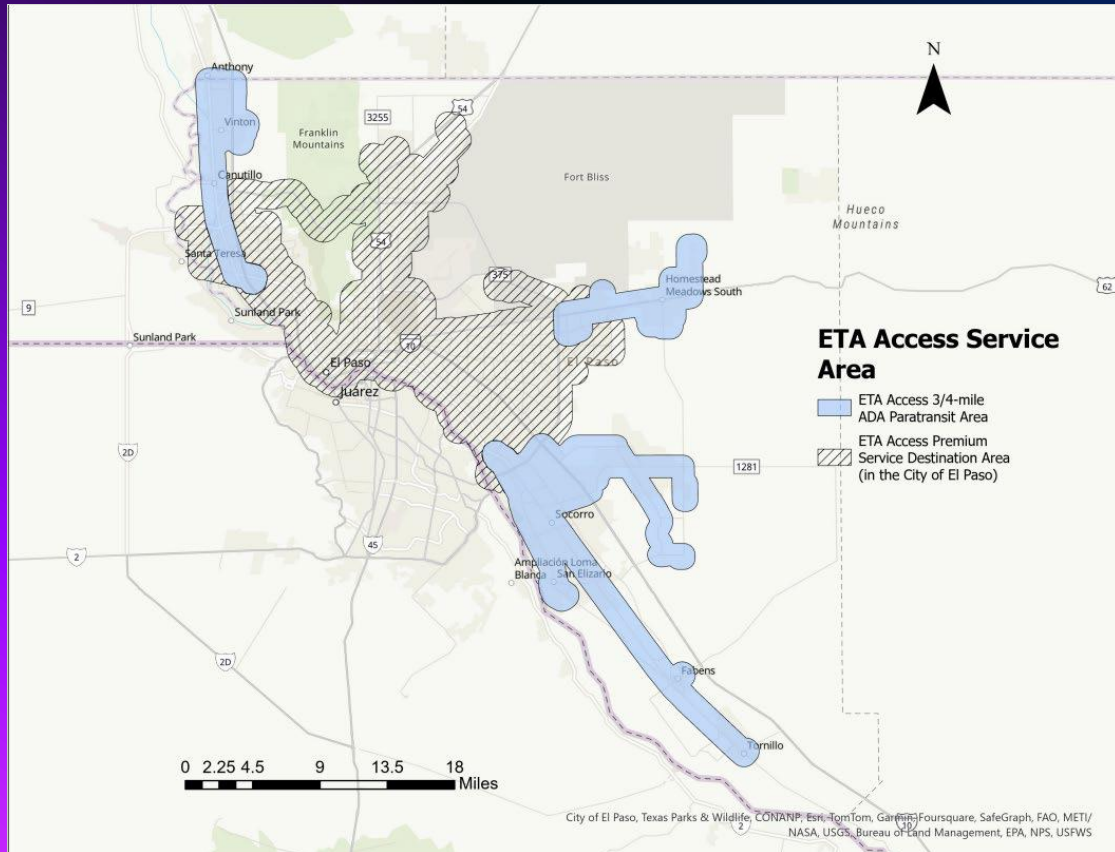


PASEO

- Six fixed routes
- Four future routes
- Serves all cities in El Paso County
- Connects to Sun Metro at Westside, Mission Valley and Upper East Side Transit Centers

ACCESS





ACCESS

- Complementary paratransit service
- Within $\frac{3}{4}$ mile radius of ETA Paseo routes
- Service to/from El Paso within Sun Metro LIFT service area

ANDALE





¡ándale!

SAN ELIZARIO & CLINT

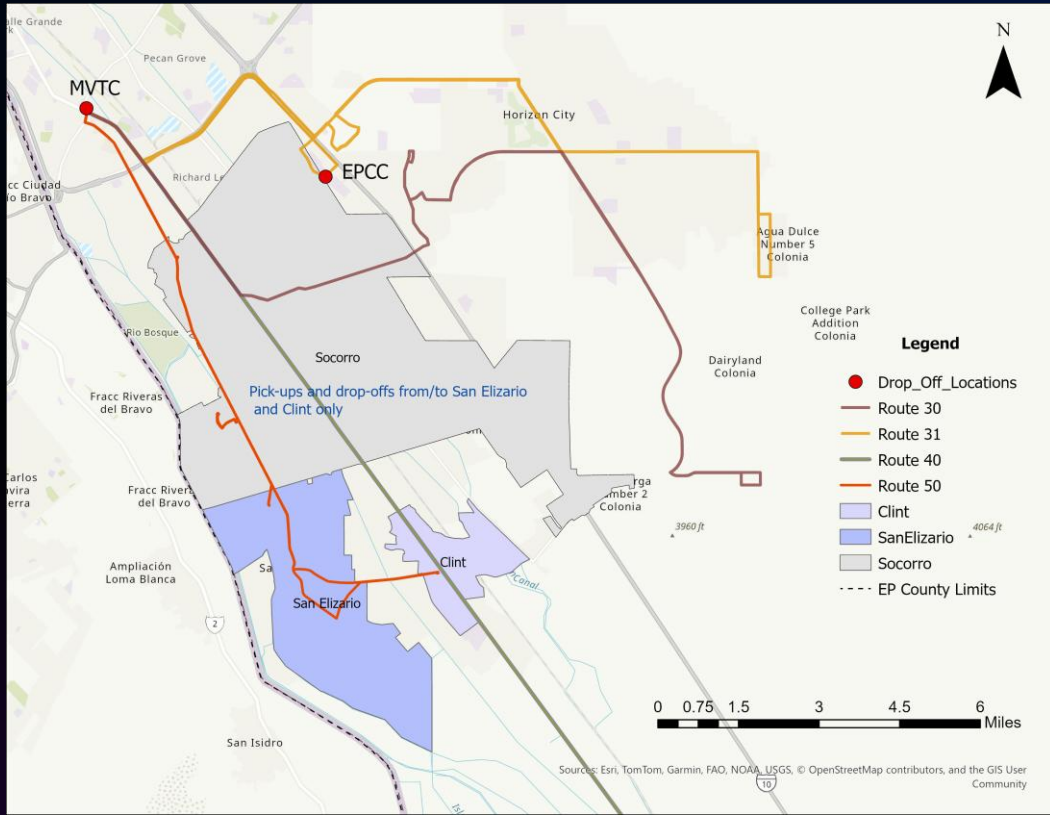
Pickups/Drop-offs in Socorro
and trips to/from the
Sun Metro Mission Valley Transfer Center



How to Ride



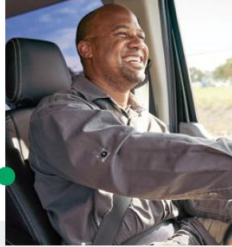
- CALL **915.247.0505** | TTY 711 OR USE THE ETA APP (COMING SOON)
- RESERVE AT LEAST **15 MIN IN ADVANCE**
- PICK UP WITHIN **30 MIN**
- HRS OF OPERATION
MON – FRI: 5AM – 8:20 PM | SAT: 5:30 AM – 7:30 PM
SUN: 7:00 AM – 6:00 PM
- FARE: **\$1.50** W/ FREE TRANSFERS TO ETA BUSES





Save money & make time for yourself with a better commute.

Commute with Enterprise makes it easy to share a ride to work on your schedule. It works a lot like a carpool, except you'll share a ride in a recent-model SUV or van from Enterprise, equipped with amenities and features to make your ride to work a more enjoyable experience.



Why Commute with Enterprise?

- **Savings:** In 2023, riders who chose to vanpool with Enterprise saved an average of \$6k/year¹.
- **Flexibility:** Change your schedule or your commitment month-to-month.
- **Reliability:** Recent-model vehicles and local support.
- **Peace of mind:** Vehicle liability, physical damage coverage, 24/7 roadside assistance & routine maintenance included.
- **Impact:** 409,000 TONS of Co2 eliminated in 2023². Measure your impact on a custom dashboard.

How it works:



- 1 **Enroll Online.**
Tell us where you're starting and where you're going.
- 2 **Choose your Schedule.**
Ride every day or just a few days a week.
- 3 **Select a Vanpool.**
We'll show you options that match your location & schedule.
- 4 **Ready to Ride.**
Your tools for day 1 and beyond are online or in our mobile app.
- 5 **Sit back & Relax.**
Or volunteer to take your turn driving.

CommuteWithEnterprise.com/HowItWorks

Contact me to get started!

Ryan Stern

ryan.d.stern@em.com

505-720-3700

VÁMONOS VANPOOL

EL PASO COUNTY VANPOOL PROGRAM

915-351-4024



1. Estimates based on 2023 Commute with Enterprise reporting, an average 5-day/ week commute and 2023 AAA costs associated with operating a vehicle including fuel, maintenance, and depreciation. 2. Estimates based on 2023 Enterprise reporting and U.S. EPA Calculator, and assuming participants previously drove alone. CommuteWithEnterprise.com/Showmethemath

FY 2025 PERFORMANCE

FY2025 Ridership by Route														
Route	Operator	Sept	Oct	Nov	Dec	Jan	Feb	Mar	Apr	May	Jun	July	Aug	Total
Route 10	Transdev	3,003	3,380	3,245	2,911	2,885	2,706	1,828	2,658	2,759	2,650	2,054	2,625	32,704
Route 20	Transdev	1,415	1,818	1,544	1,516	1,498	1,228	1,087	1,260	1,557	1,544	1,209	1,465	17,141
Route 30	Transdev	3,041	3,107	2,768	2,304	2,575	2,490	2,067	2,047	2,969	2,480	1,899	2,232	29,979
Route 31	Transdev	1,311	1,542	1,365	1,158	1,220	1,182	1,213	1,326	1,462	1,191	1,054	1,284	15,308
Route 40	Transdev	1,390	1,508	1,344	1,016	1,142	1,302	1,173	1,242	1,281	1,063	863	959	14,283
Route 50	Transdev	442	517	463	485	1,085	1,091	1,102	1,061	1,266	1,003	606	794	9,915
Route 84	Sun Metro	2,503	3,037	2,515	2,330									10,385
NMDOT Park and Ride Gold Route	All Aboard America via NMDOT	3,334	4,320	2,828	2,791	2,763	3,286	3,016	3,171	2,673	2,233	2,441	2,907	35,763
Sun Metro LIFT Route 84 Paratransit	MV Transportation via Sun Metro	Data Unavailable per Sun Metro												4,178
ETA Access	Transdev	31	67	27	101	166	256	375	408	407	486	376	546	3246
Vanpool	Enterprise	31,403	34,546	32,052	32,089	35,449	32,696	33,727	33,077	34,660	32,269	34,341	33,591	399,900
Grand Total		47,873	53,842	48,151	46,701	48,783	46,237	45,588	46,250	49,034	44,919	44,843	46,403	572,802

Previous Year: 559,126 for all modes

FACILITIES



Bus Stop

30 Horizon City

40 Fabens

50 Clint



Stop ID# 00000

(915) 533-4731

www.elpasotransportationauthority.org



MOBILITY AS A SERVICE

- Partnership with Moovit and Transit for MaaS apps.
- Plan bus trips, schedule Uber/Lyft rides, unlock bicycles, pay fares through Token Transit, book Andale rides through future software.
- Ability to track buses through Peak Transit.
- Also on Google, Apple Maps.



DOWNLOAD transit

- Route Planning
- Real Time Bus Tracking
- Fare Payment

Download on the App Store | GET IT ON Google Play

The advertisement shows a smartphone displaying a transit app interface with a map and a list of bus routes. The routes list includes: 110 South Richard Transit Center, 47 South Lyndale Park, 126 South Lyndale Park, and 120 South Richard Transit Center.

moovit

Plan. Pay. Ride.

Purchase confirmed

Single ride \$2.00

View ticket

RABA

Download **Moovit** and easily plan and pay for your trip in one app

FREE APP

Download on the App Store | GET IT ON Google Play

The advertisement shows three smartphones displaying the Moovit app interface. The central phone shows a "Purchase confirmed" screen for a "Single ride \$2.00" with a "View ticket" button. The RABA logo is in the top right corner.

UPCOMING PROJECTS

- Passenger amenities
 - Shelters
 - Benches
 - Bus stop signs
- Service enhancements
 - Sunday service on Route 10
 - Revisions to Routes 10 and 20
 - Routes 11, 21, 40X and 48
 - Andale microtransit zones
 - Volunteer Transportation Program
- New contracts with Transdev and Enterprise
- Sun Metro partnerships
- Separation from El Paso County
- Partnership with Socorro
- Federal Transit Administration Section 5307, 5310 and 5339 from El Paso Urbanized Area
- Rural Transit District from TxDOT
- Additional 4 administrative positions
- Transit operations and maintenance facility
- CNG bus additions
- Bikeshare with CRRMA
- More technology, apps, electronic fares ¹⁸



WE GOT CONNECTIONS!



ETA & SUN METRO RELATIONSHIP

1. Current Interlocal Agreements
 - a. Jury Duty passes/Schedule Page printing/bus transfers/pass acceptance
 - b. Use of Bus Stops/Transit Centers
 - c. CNG fueling
 - d. Paratransit coverage
2. Upcoming Interlocal Agreements
 - a. Service Expansion (FTA funds)
 - b. Participation on EPATS
 - c. Lease Union Depot Maintenance



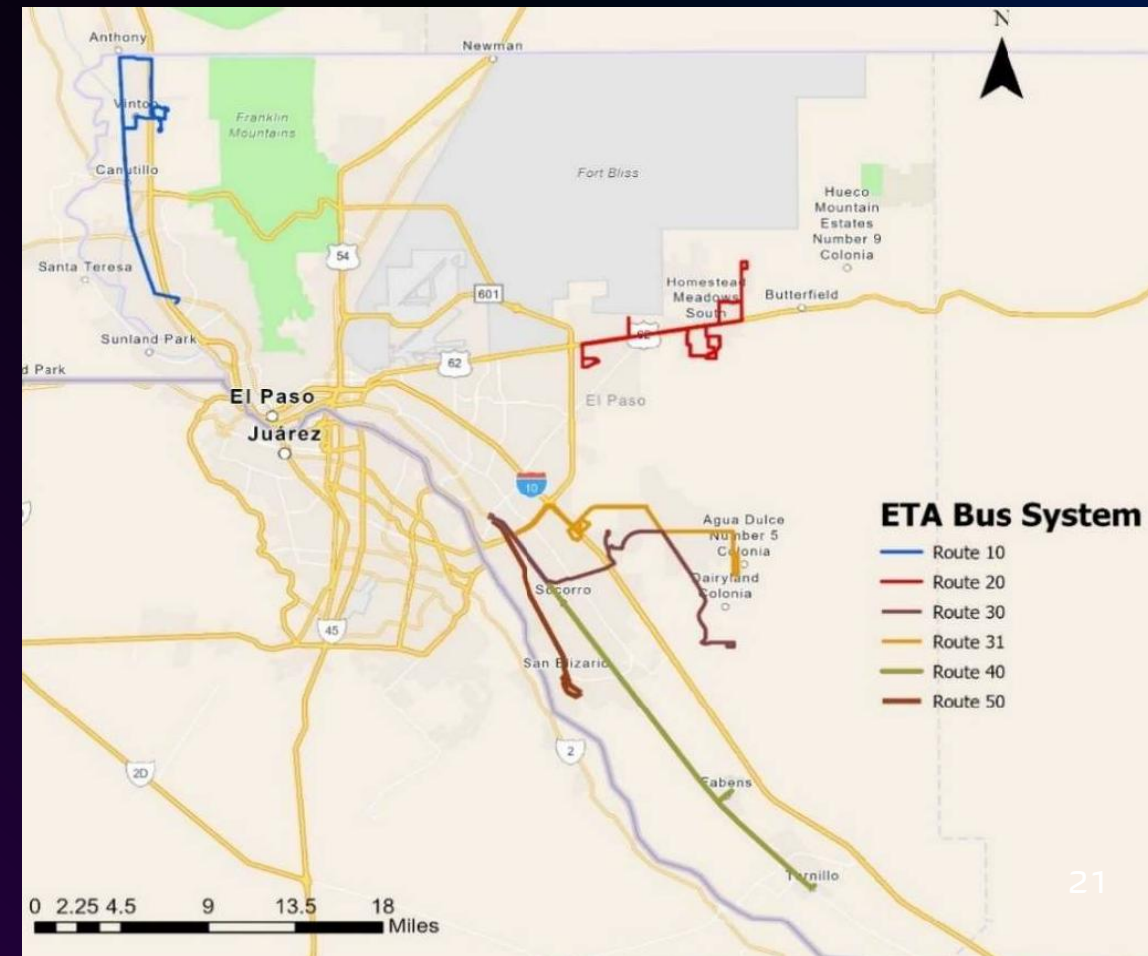
VALUE ETA PROVIDES TO SUN METRO

ETA provides service in El Paso:

- From Westside Transit Center along Doniphan Drive supporting Route 12.
- From Mission Valley Transit Center along Alameda Avenue and Socorro Road supporting Route 60.
- From Upper Eastside Transit Center along Edgemere Blvd, Terre Este Road, Montana Avenue and RC Poe Road supporting Routes 52, 54 and 56.

Value to Sun Metro for participation in ETA:

- ETA would stop at all Sun Metro stops on this corridor.
- ETA would accept Sun Metro passes for trips along these corridors.
- Trips would operate in between Sun Metro existing service.





THANK YOU & QUESTIONS

John Andoh

Executive Director

915.297.1227

jandoh@elpasotransportationauthority.org

www.elpasotransportationauthority.org ²²