



ITEM 34

7833 Mount Latona Drive Special Permit – Infill

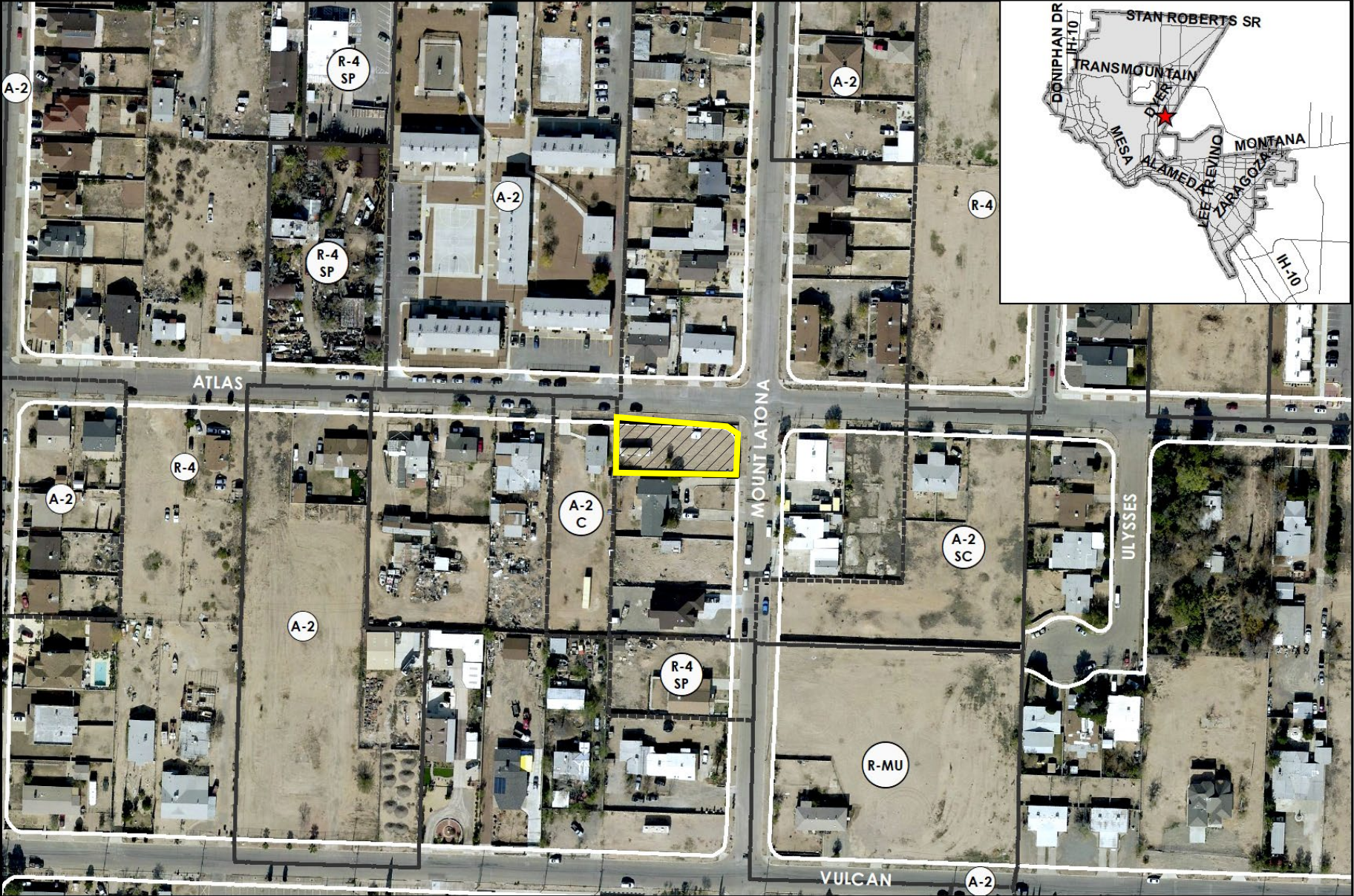
PZST21-00014



Strategic Goal 3.

Promote the Visual Image of
El Paso

PZST21-00014

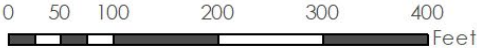


Aerial

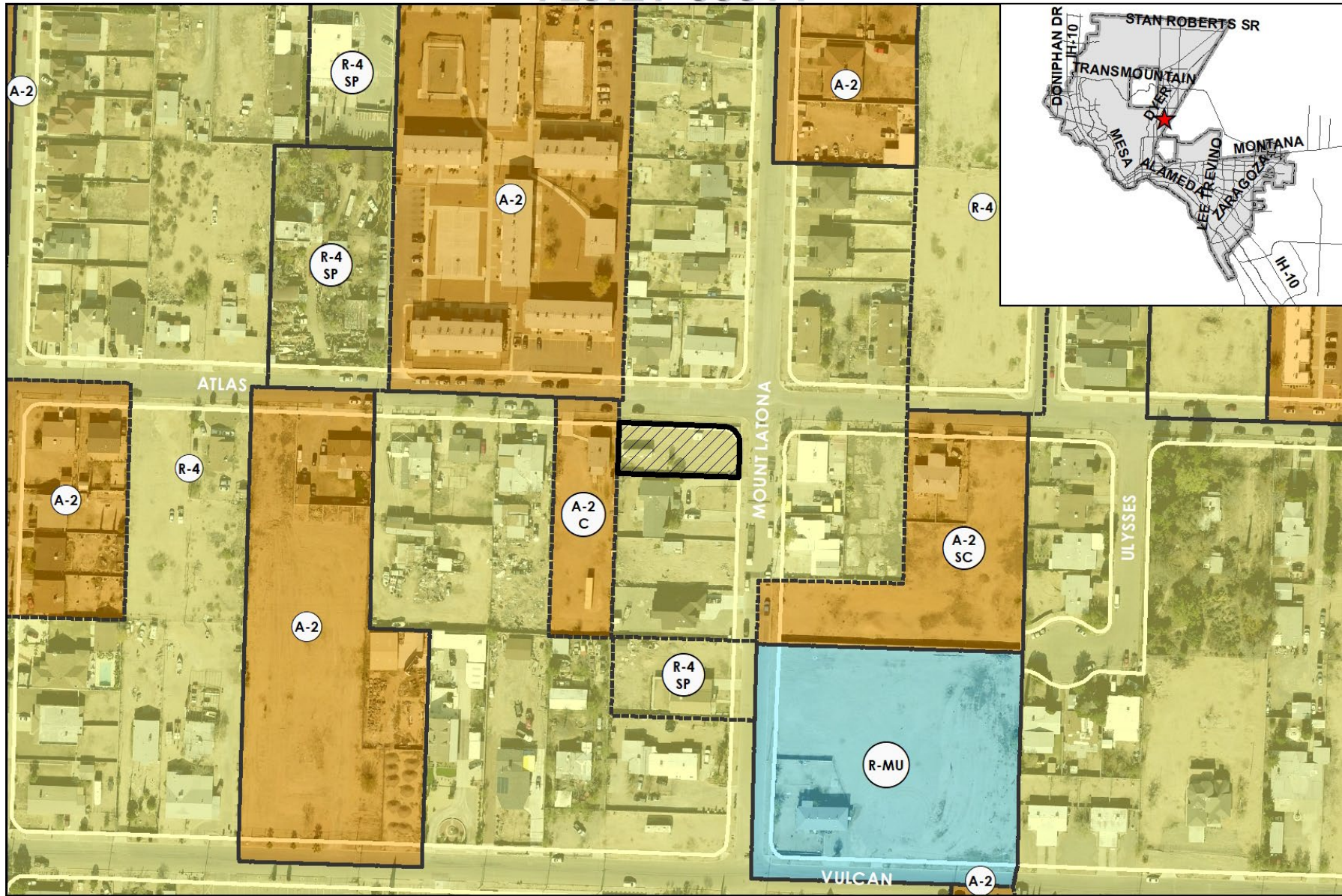
This map is designed for illustrative purposes only. The features depicted here are approximate and more site-specific studies may be required to draw accurate conclusions. Enlargements of this map to scales greater than its original can induce errors and may lead to misinterpretations of the data. The Planning & Inspections Department Planning Division makes no claim to its accuracy or completeness.



Subject Property



PZST21-00014

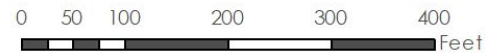


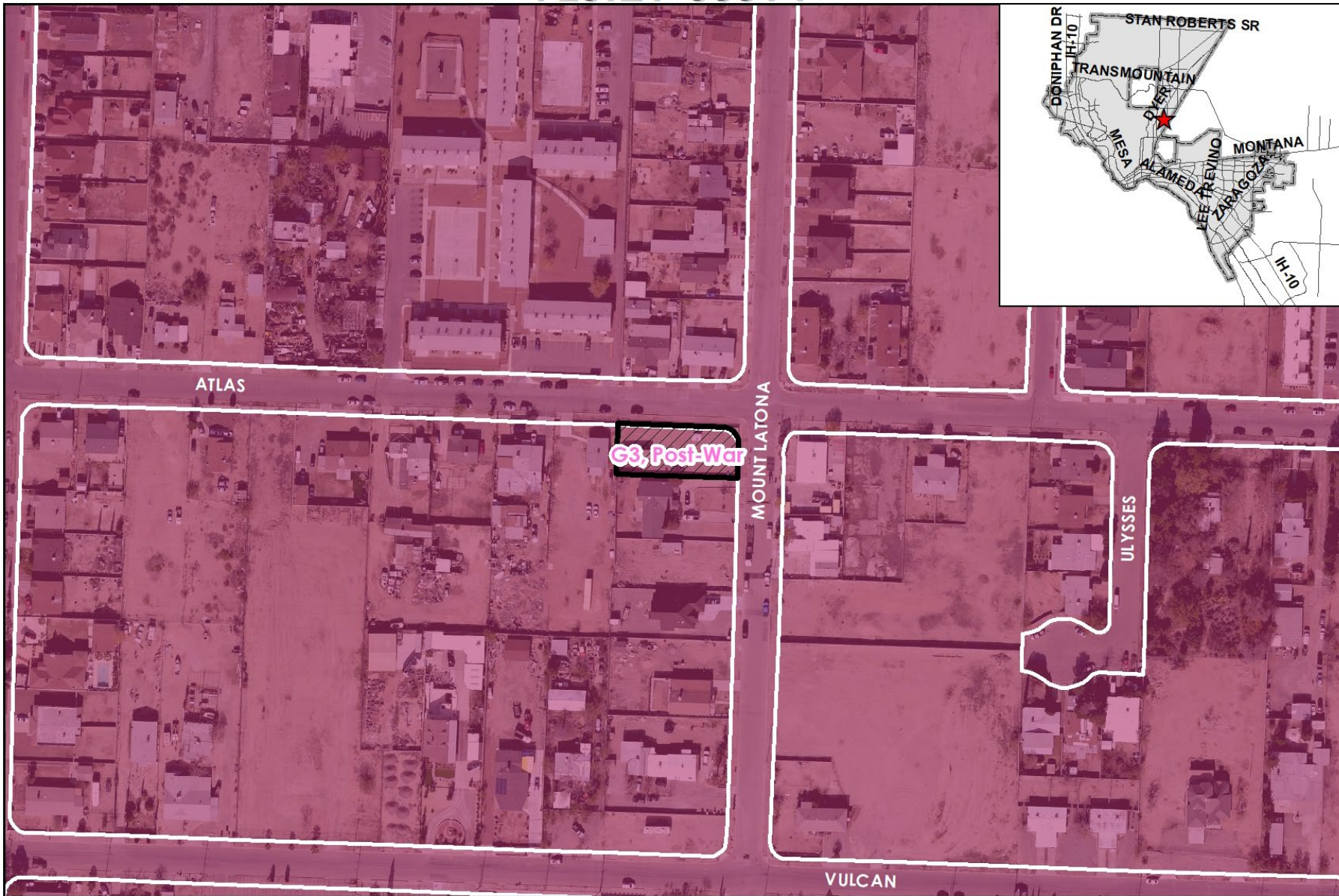
Existing Zoning

This map is designed for illustrative purposes only. The features depicted here are approximate and more site-specific studies may be required to draw accurate conclusions. Enlargements of this map to scales greater than its original can induce errors and may lead to misinterpretations of the data. The Planning & Inspections Department Planning Division makes no claim to its accuracy or completeness.



Subject Property



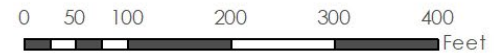


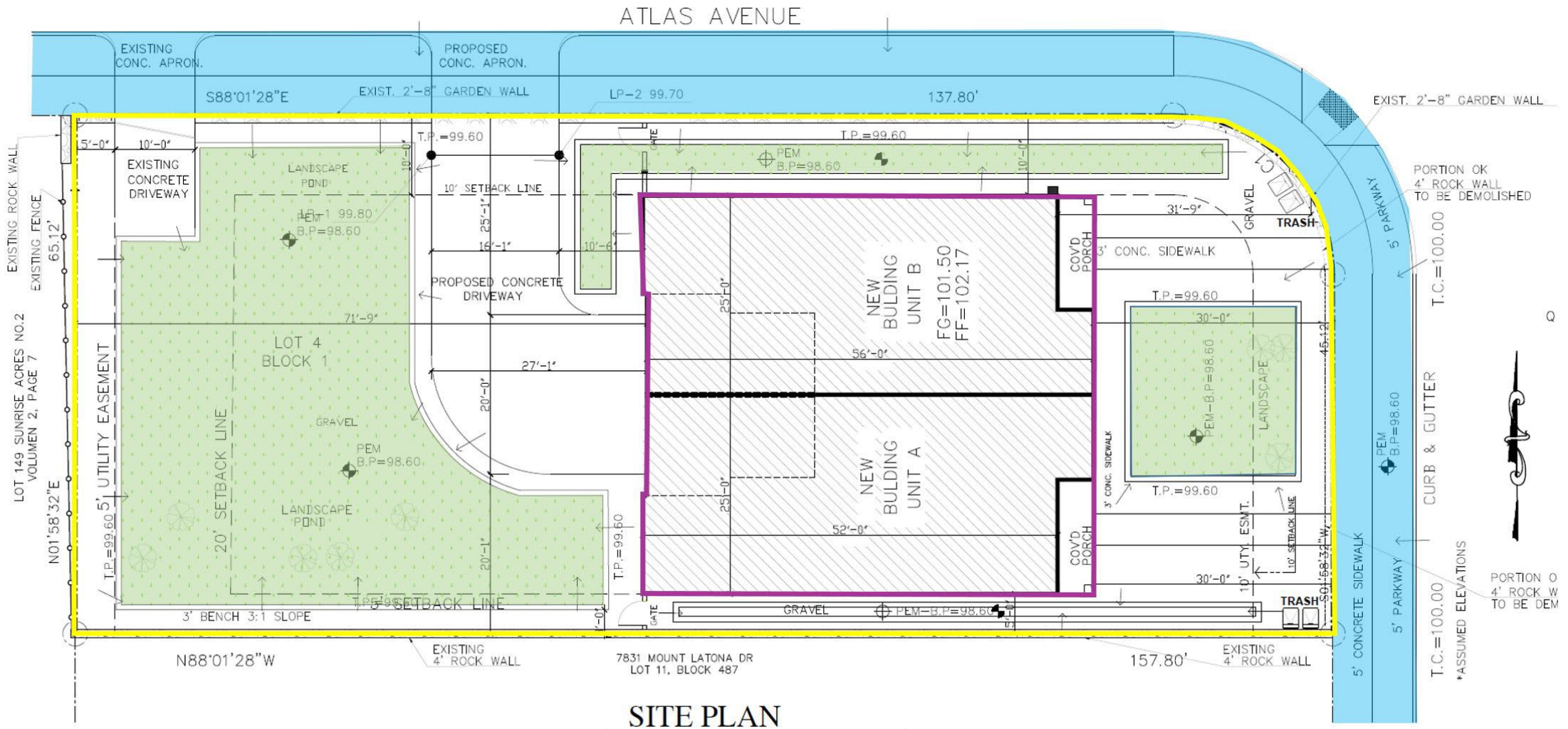
Future Land Use Map

This map is designed for illustrative purposes only. The features depicted here are approximate and more site-specific studies may be required to draw accurate conclusions. Enlargements of this map to scales greater than its original can induce errors and may lead to misinterpretations of the data. The Planning & Inspections Department Planning Division makes no claim to its accuracy or completeness.



Subject Property





SITE PLAN

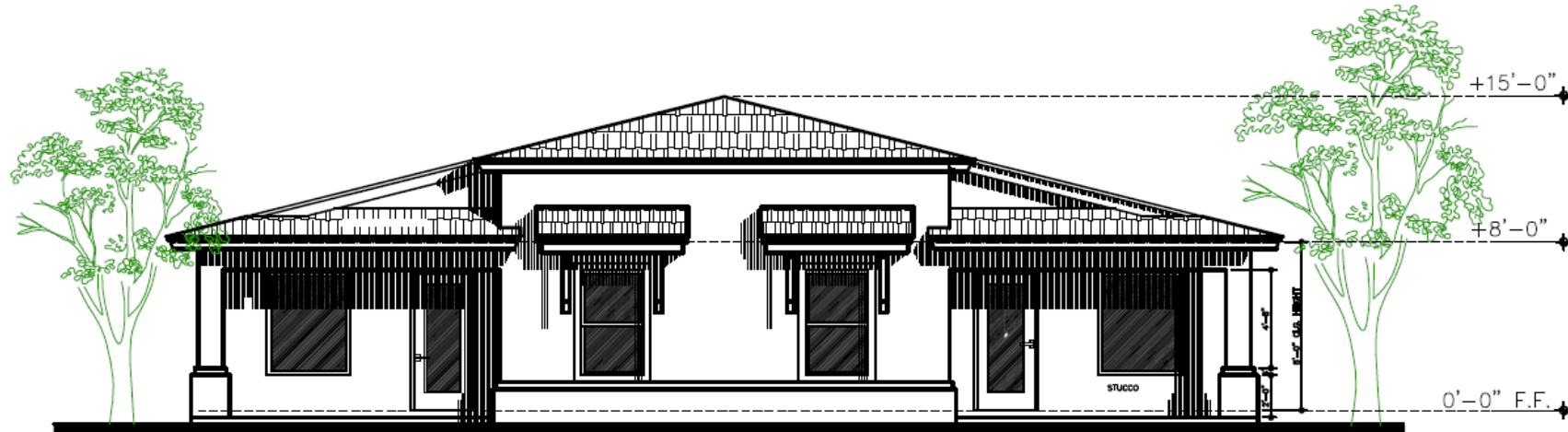
SCALE: 3/32"=1'-0"

Conceptual Plan



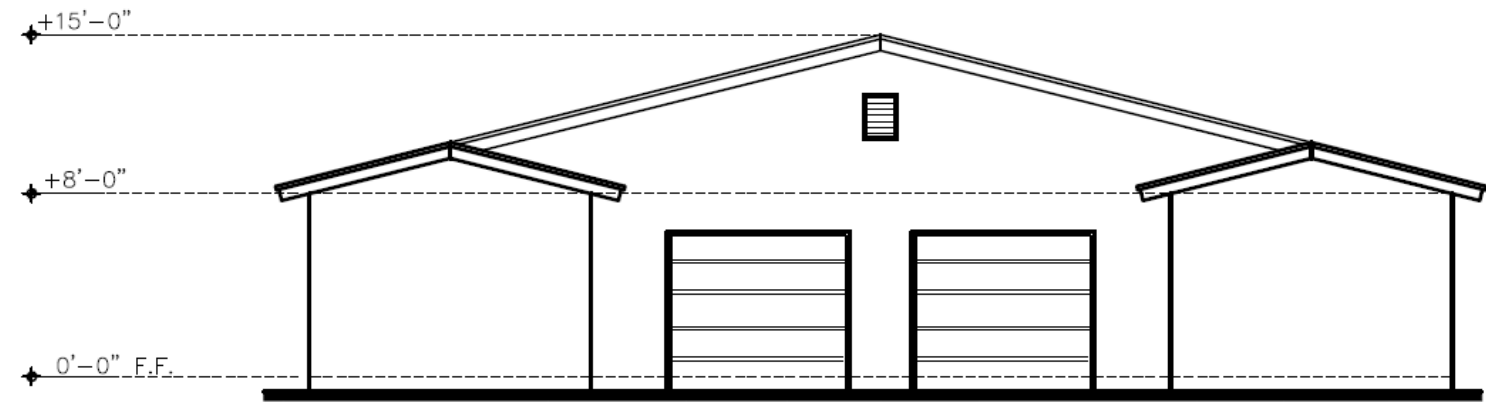
PORTION OF 4' ROCK WALL TO BE DEMOLISHED





FRONT ELEVATION SCALE: 1/8"=1'-0"

Elevations



REAR ELEVATION SCALE: 1/4"=1'-0"



Mount Latona Dr.

Atlas Ave.

Subject Property: Mount Latona Dr. & Atlas Ave.



Surrounding Development



N



W



S

E



Public Input

- Notices were mailed to property owners within 300 feet on November 29.
- The Planning Division has not received any communications in support nor opposition to the request.





Recommendation

- Staff and CPC recommend approval of the special permit and detailed site plan.



Mission

Deliver exceptional services to support a high quality of life and place for our community



Vision

Develop a vibrant regional economy, safe and beautiful neighborhoods and exceptional recreational, cultural and educational opportunities powered by a high performing government



Values

Integrity, Respect, Excellence, Accountability, People