



Ysleta International Port of Entry and Santa Fe Railyard Project Development Study

FY24 EPA Clean Ports Planning Grant

May 21, 2024



CITY OF EL PASO

STRATEGIC PLAN

GOAL 1: CULTIVATE AN ENVIRONMENT CONDUCIVE
TO STRONG ECONOMIC DEVELOPMENT

GOAL 7: ENHANCE AND SUSTAIN EL PASO'S
INFRASTRUCTURE NETWORK

AGENDA

FY24 EPA Clean Ports Grant

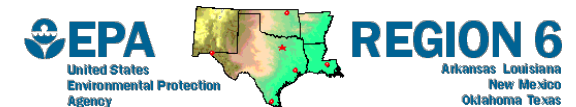
1. Program Overview
2. Partnerships
3. Scope of Work
4. MPO Coordination
5. Budget
6. Timeline
7. Council Action



Program Overview

EPA Clean Ports Program: Climate and Air Quality Planning Competition

- \$150 million available in FFY24
 - \$200,000 - \$3,000,000 for technical planning projects
 - No match required
 - Santa Fe Railyard is the only eligible port in El Paso
 - Requires participation from private sector
-
- **Application deadline:** May 28, 2024
 - **Selection date:** September 2024
 - **Award date:** December 2024



Partnerships

Lead Applicant: City of El Paso

Collaborating Entities:

- UTEP (sub-awardee)
- ASPIRE NSF Engineering Research Center (technical consultant)
- Texas A&M Transportation Institute (technical consultant)
- BNSF Rail (letter of support requested 4/22/24)

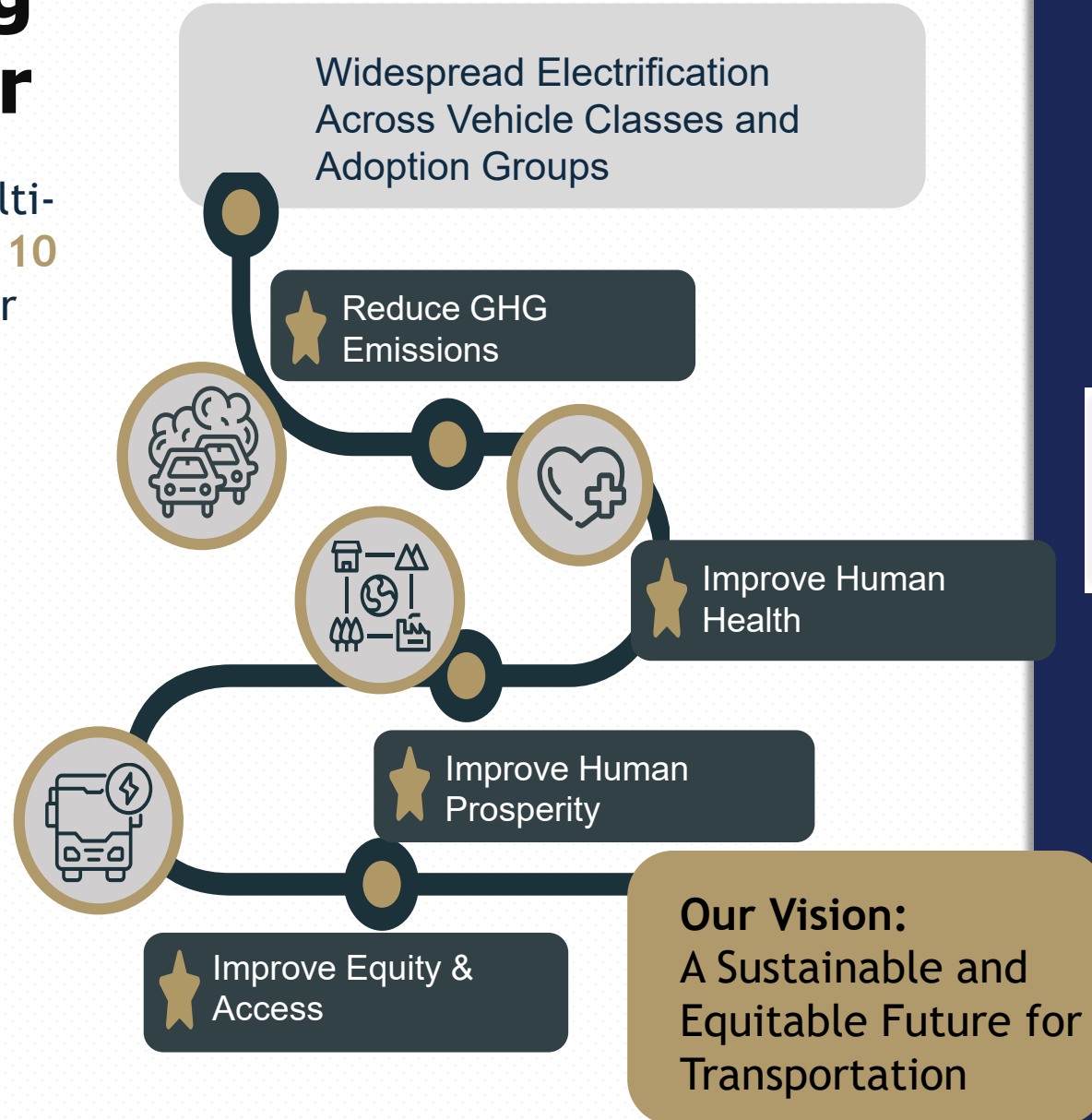
Other Partners

- El Paso MPO / TxDOT
- State delegation (implementation funding)
- Municipio de Ciudad Juarez + other Mexican government agencies
- Fideocomiso de Puentes Fronterizos de Chihuahua



NSF Engineering Research Center

ASPIRE started in 2020 as a multi-disciplinary effort, now **across 10 affiliated Universities** and over **sixty industry partners**.



Regan Zane, USU
Center Director
Ivonne Santiago, UTEP
Center Co-Director

ASPIRE Areas of Research



Equity

- Social Equity
- Environmental Justice
- Technology & K-22 Education



Data

- Data Analysis & Fusion
- AI / Optimization / Co-sim
- Cybersecurity / IoT / Networks



Adoption

- User Acceptance / Society
- Public Policy / Economy
- Techno-economics



Power

- Power Systems
- Grid Integrated Charging Systems
- Battery Systems



Transportation

- Transportation Systems
- Transportation Infrastructure

Scope of Work

Goal: Develop technical documents necessary to expand and increase resiliency in the Ysleta Port of Entry, increase efficiency in the Santa Fe Railyard, and reduce greenhouse gas emissions in both ports.

Project Tasks:

- Port expansion feasibility analysis (Ysleta POE)
- Infrastructure electrification and resiliency inventory
- Stakeholder engagement and communications
- Benefit-Cost Analysis (BCA) (Ysleta POE)
- Baseline emissions study and emissions reduction strategy



Santa Fe Railyard Area of Interest



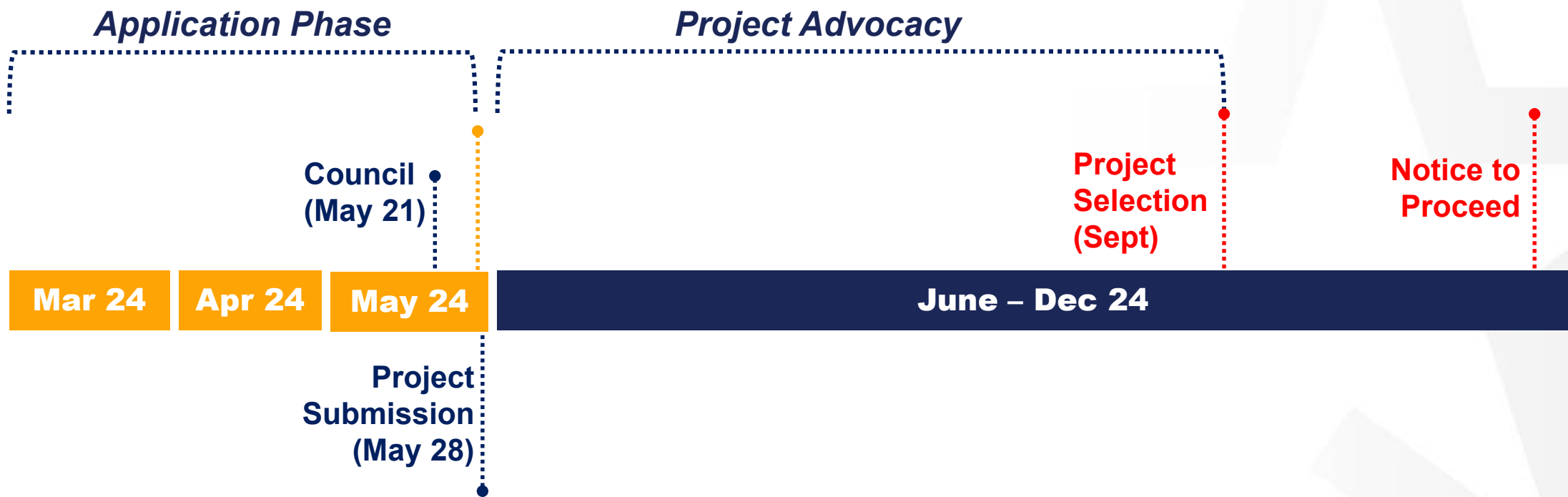
Budget

SOW Component	Grant
Port expansion feasibility analysis	\$1,650,000
Infrastructure electrification and resiliency inventory	\$250,000
Stakeholder engagement and communications	\$300,000
Benefit-Cost Analysis (BCA): Ysleta POE	\$100,000
Baseline emissions study and emissions reduction strategy	\$550,000
Project Coordination, Communications, Management	\$150,000
No City match required	\$3,000,000

UTEP/ASPIRE subgrant: \$1.4M



Project Timeline



Council Action

Discussion and action on a Resolution authorizing the submission of a grant application requesting \$3,000,000, with no match required from the City, from the USDOE Fiscal Year (FY) 2024 Clean Ports Program: Climate and Air Quality Planning Competition for the Ysleta International Port of Entry and Santa Fe Railyard Project Development Study; and authorizing the City Manager, or designee, to sign any documents necessary for the proper submission of said application.

MISSION



Deliver exceptional services to support a high quality of life and place for our community.

VISION



Develop a vibrant regional economy, safe and beautiful neighborhoods and exceptional recreational, cultural and educational opportunities powered by a high performing government.



VALUES

Integrity, **R**espect, **E**xcellence,
Accountability, **P**eople