



ITEM 6

RC Poe and Edgemere Right-Of-Way Dedication

SURW20-00003



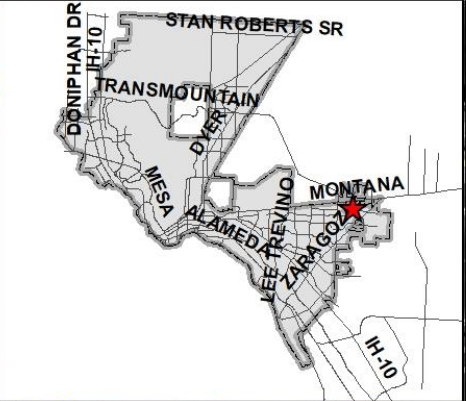
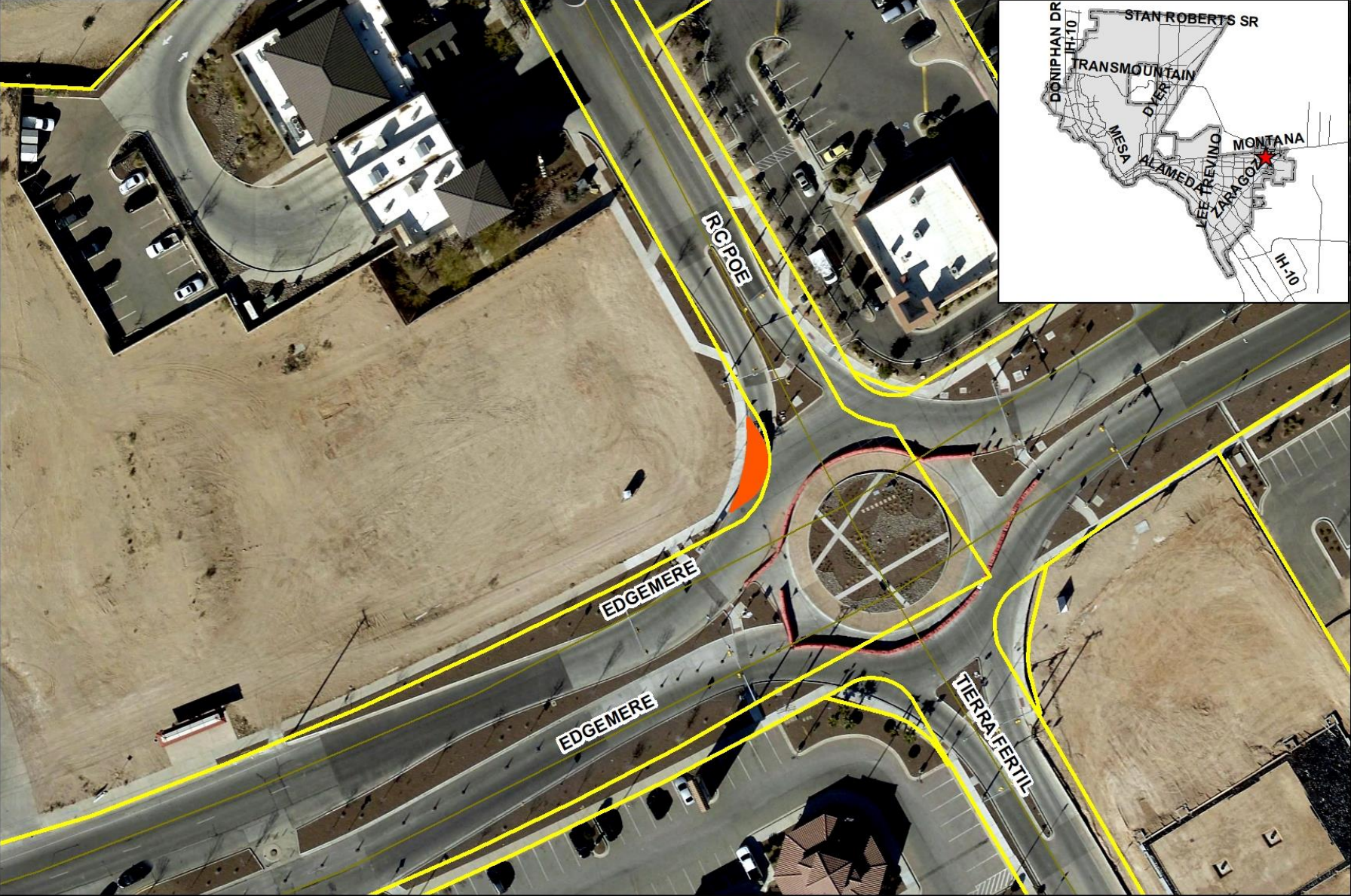
Strategic Goal 3.

Promote the Visual
Image of El Paso

RC Poe and Edgemere ROW Dedication




Aerial Map



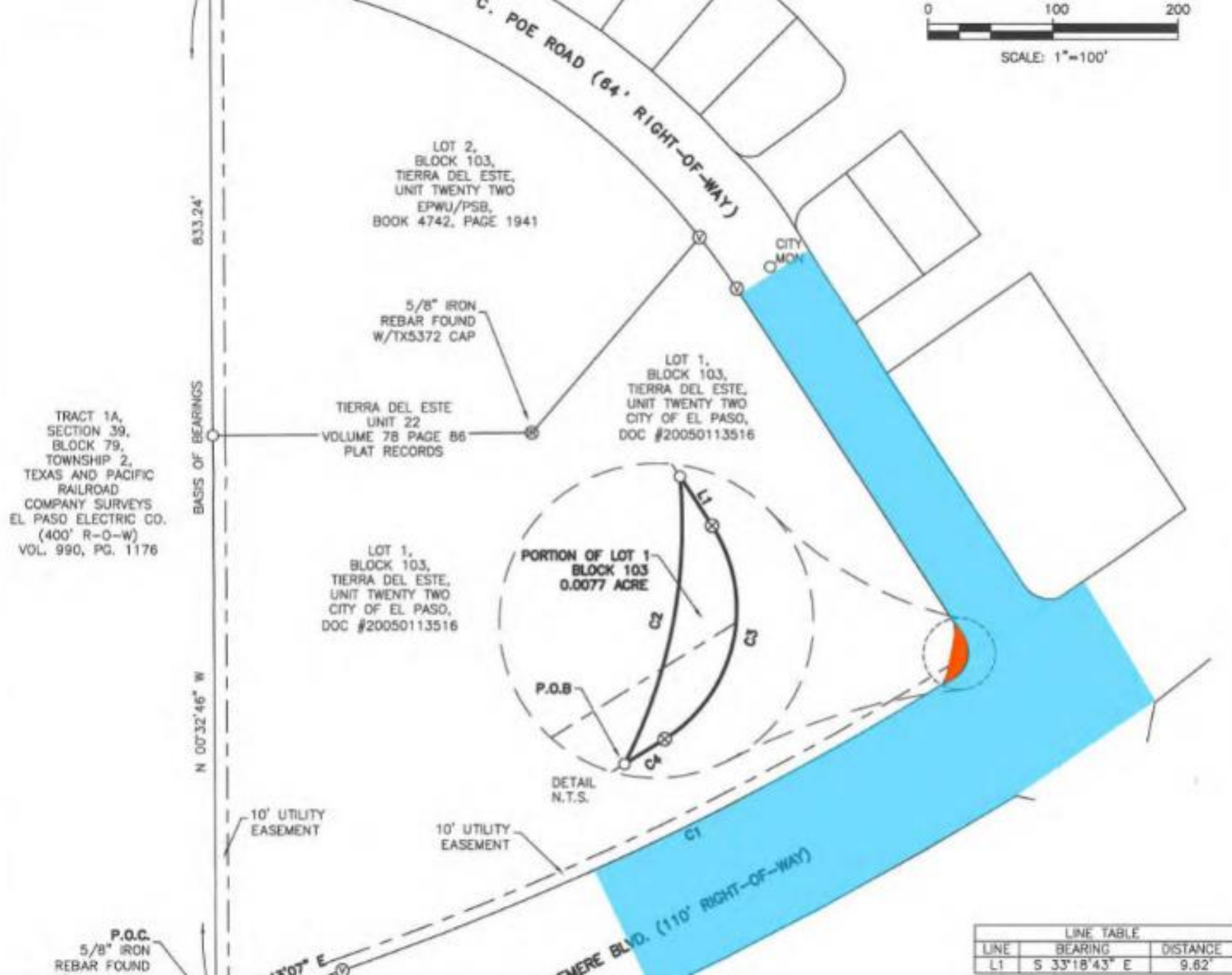
This map is designed for illustrative purposes only. The features depicted here are approximate and more site-specific studies may be required to draw accurate conclusions. Enlargements of this map to scales greater than its original can induce errors and may lead to misinterpretations of the data. The Planning & Inspections Department Planning Division makes no claim to its accuracy or completeness.



 Subject Property



Survey with Existing Development







Recommendation

- Staff recommends approval of RC Poe and Edgemere Right-of-Way Dedication.



Mission

Deliver exceptional services to support a high quality of life and place for our community



Vision

Develop a vibrant regional economy, safe and beautiful neighborhoods and exceptional recreational, cultural and educational opportunities powered by a high performing government



Values

Integrity, Respect, Excellence, Accountability, People