



**EP
TX**

CITY OF EL PASO

Street Pavement Condition Index Study

October 25, 2022

**EP
TX**
CITY OF EL PASO



TABLE OF CONTENTS

1. Street Inventory
2. How Streets Deteriorate
3. Historic Investment
4. PCI Results
5. PCI Website
6. Next Steps





7: Enhance and Sustain El Paso's Infrastructure Network



Strategic Plan Alignment



City of El Paso Streets Inventory



6,117 streets

5,769 residential streets
188 arterial streets
160 collector streets



Over 2,400 centerline miles



\$3.6 Billion Asset

CONTRIBUTING FACTORS TO STREET DETERIORATION

- Decades of minimal and inconsistent investment in street resurfacing and street reconstruction
- Damage from storm water runoff and drainage systems – water penetrating pavement deteriorates the road base and subgrade
- Impact of permitted and illegal pavement cuts
- Increase in development, leading to larger traffic volumes than they were constructed to support
- Urban sprawl and development



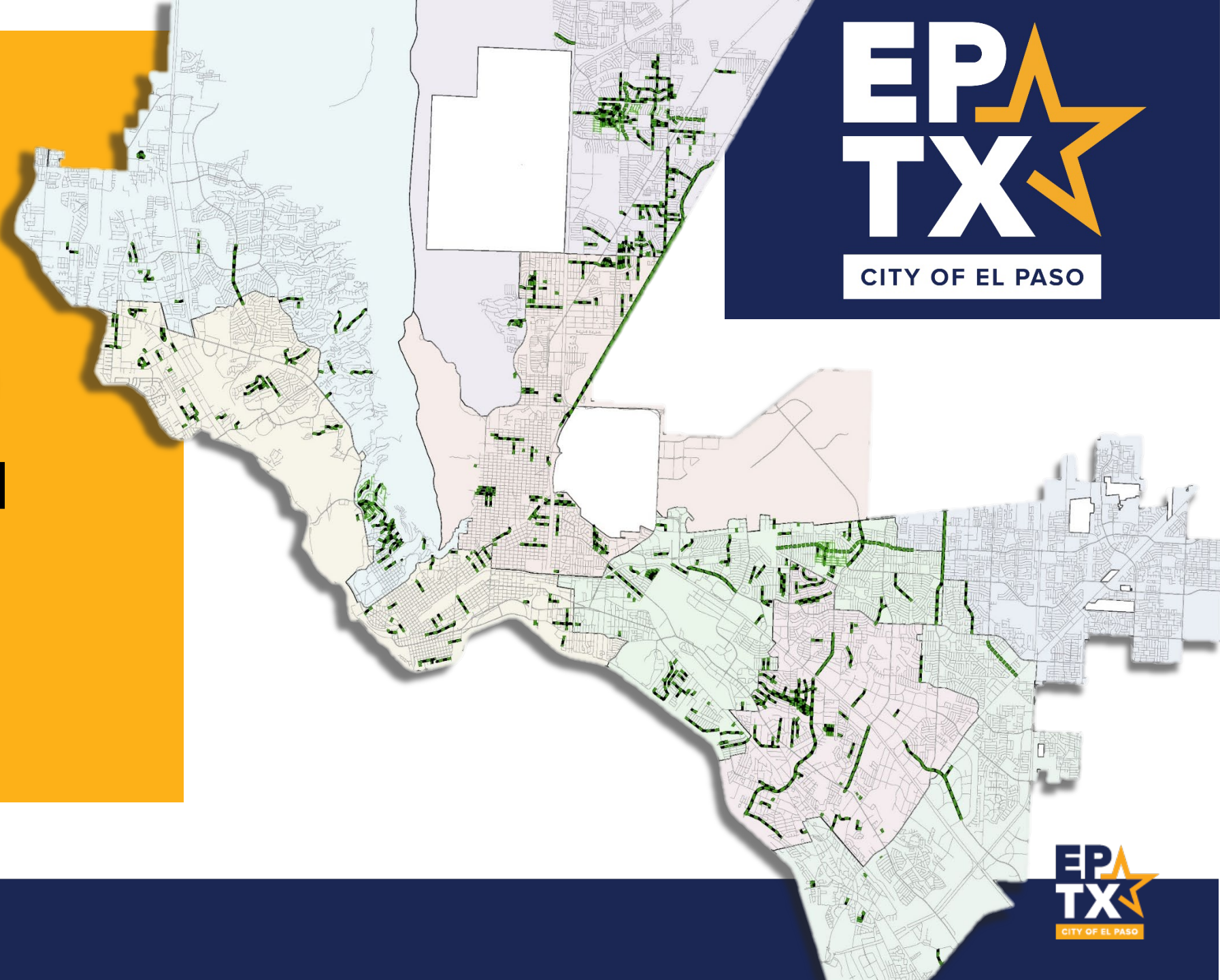
485

Resurfaced Streets

(2013 - Present)



CITY OF EL PASO



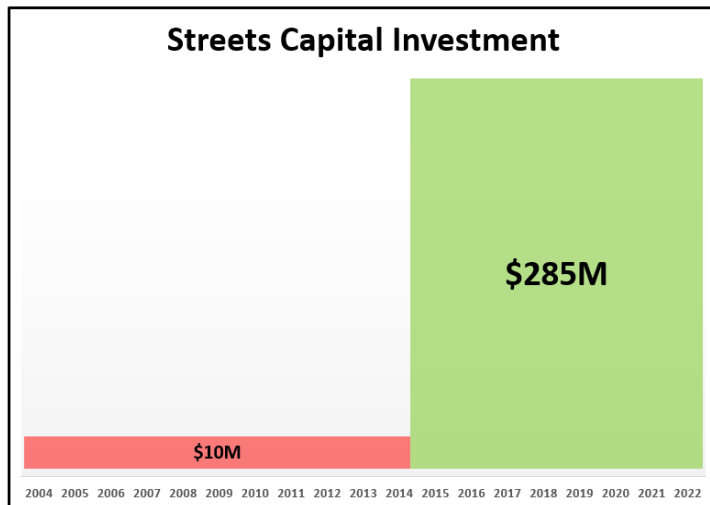
CITY OF EL PASO

Alignment & Integration

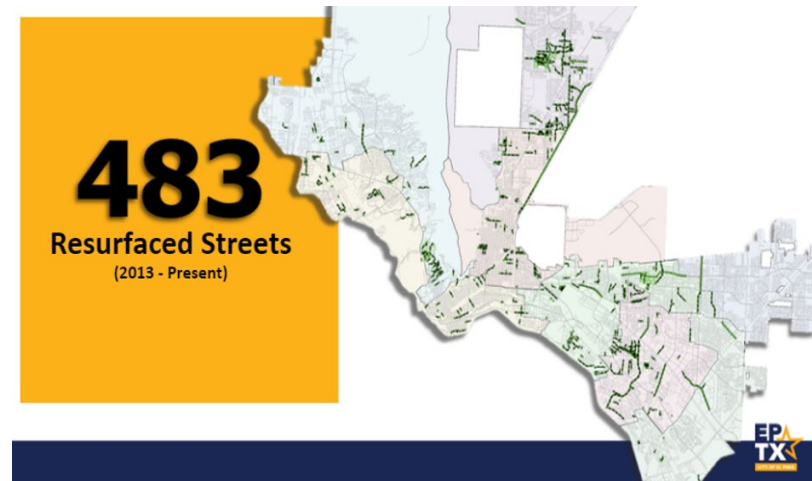


CITY OF EL PASO

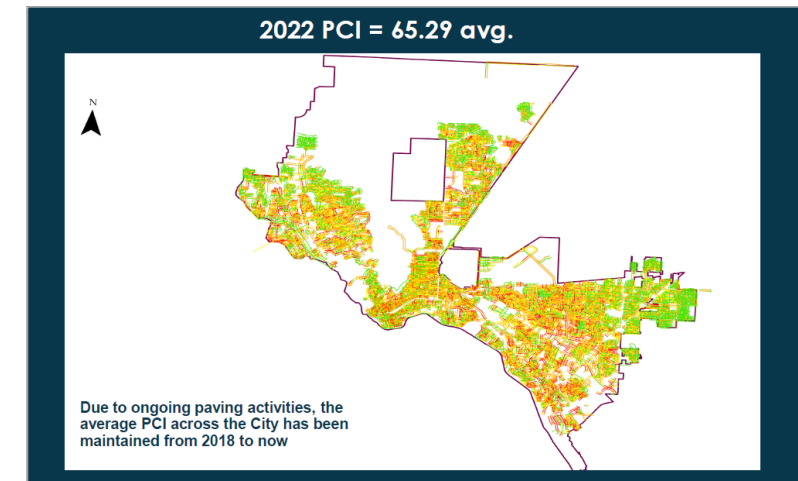
Streets Capital Investment Funding



Resurfaced Streets 2013 - Present



2022 Pavement Condition Index (PCI)



2008 Avg. PCI = 75.54

2018 Avg. PCI = 65.42

2022 Avg. PCI = 65.29

Investment

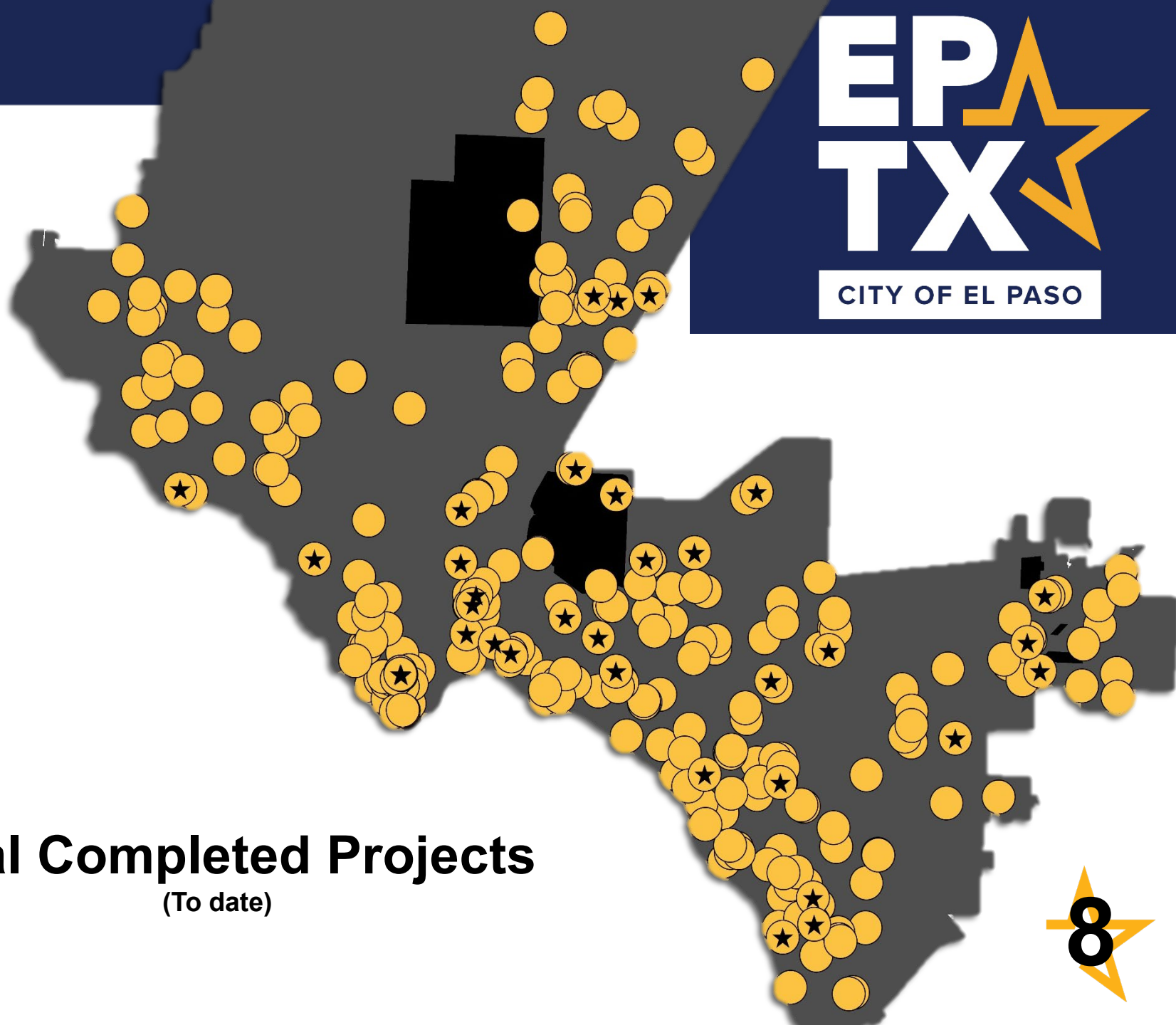
Impact

Output



Completed Projects Map

★ FY 2022 Completed Projects



461

Total Completed Projects
(To date)





178 +
Park and
Recreation Improvements

63 +
Facility
Improvements



173 +
Transportation
Improvements

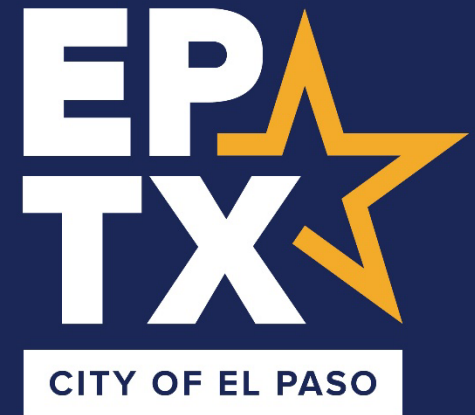


25 +
Airport
Improvements



22 +
Public Safety
Improvements

PCI – What is it?



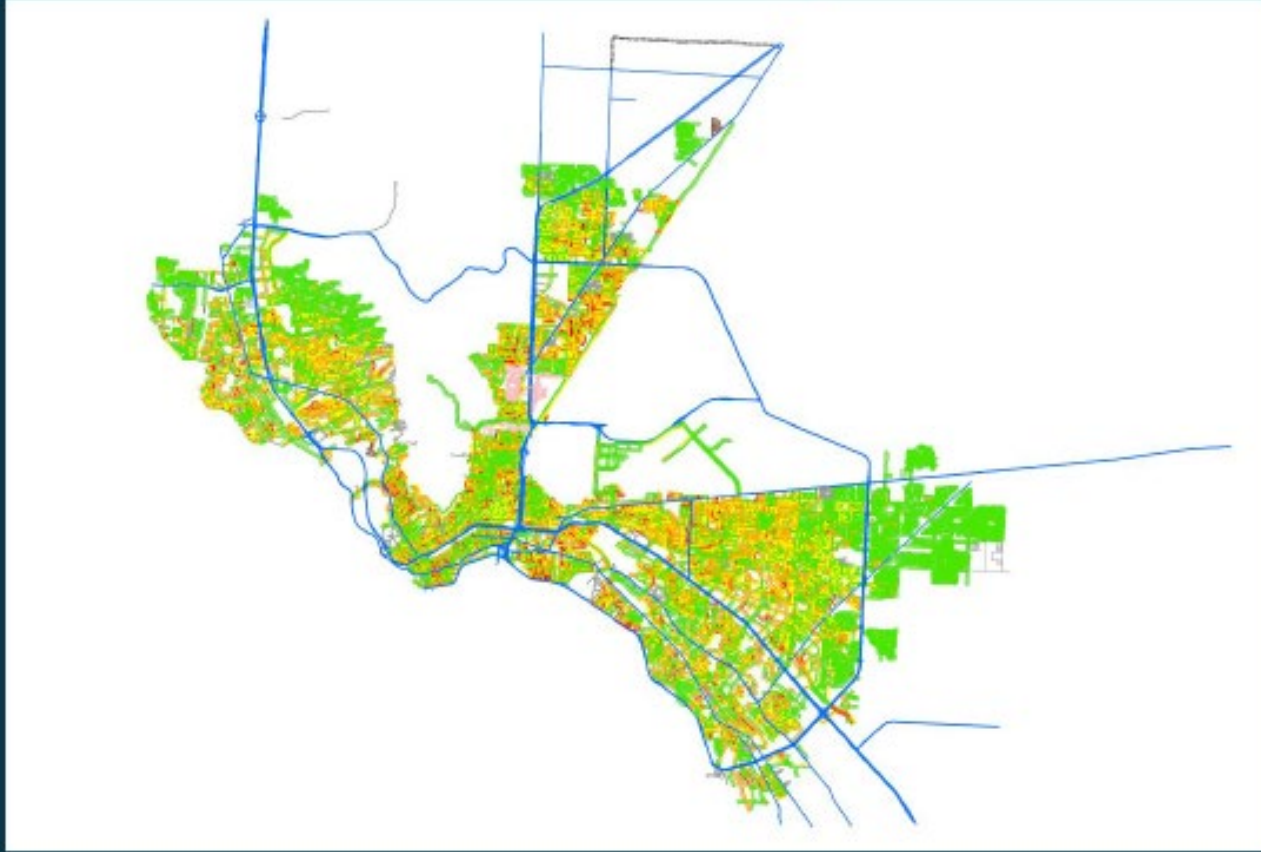
PAVEMENT CONDITION INDEX

- Pavement Condition Index (PCI) is data used to assess the general condition of pavement.
- It is a numerical indicator that rates the general condition of the surface pavement of a road from 0-100.
 - New streets = 100; very poor < 30
 - *Currently at average 65*
- The data can be used as a tool for decision-making on infrastructure improvements.
- Provides forecasting, which can assist with planning future improvements.
- The City reevaluates pavement through a PCI study every 4-5 years in order to
 - Acquire relevant data about the present-day conditions, to acquire data about the deterioration of the network over time, and to utilize as a primary tool in making capital project decisions on street right of way.



2008 PCI PAVEMENT CONDITION INDEX

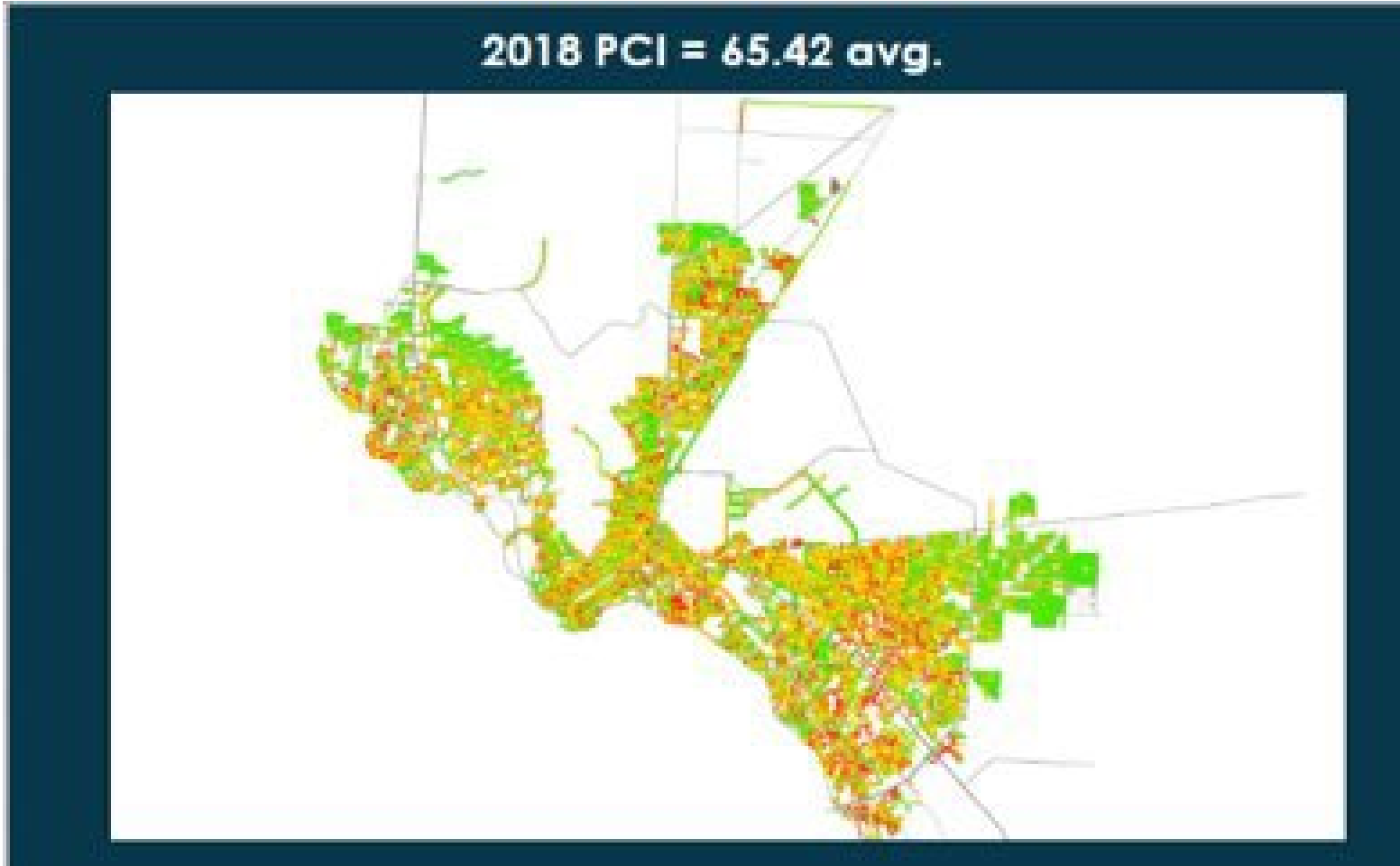
2008 PCI = 75.54 avg.



CITY OF EL PASO

PCI range	Class
85-100	Good
70-85	Satisfactory
55-70	Fair
40-55	Poor
25-40	Very Poor
10-25	Serious
0-10	Failed

2018 PCI PAVEMENT CONDITION INDEX



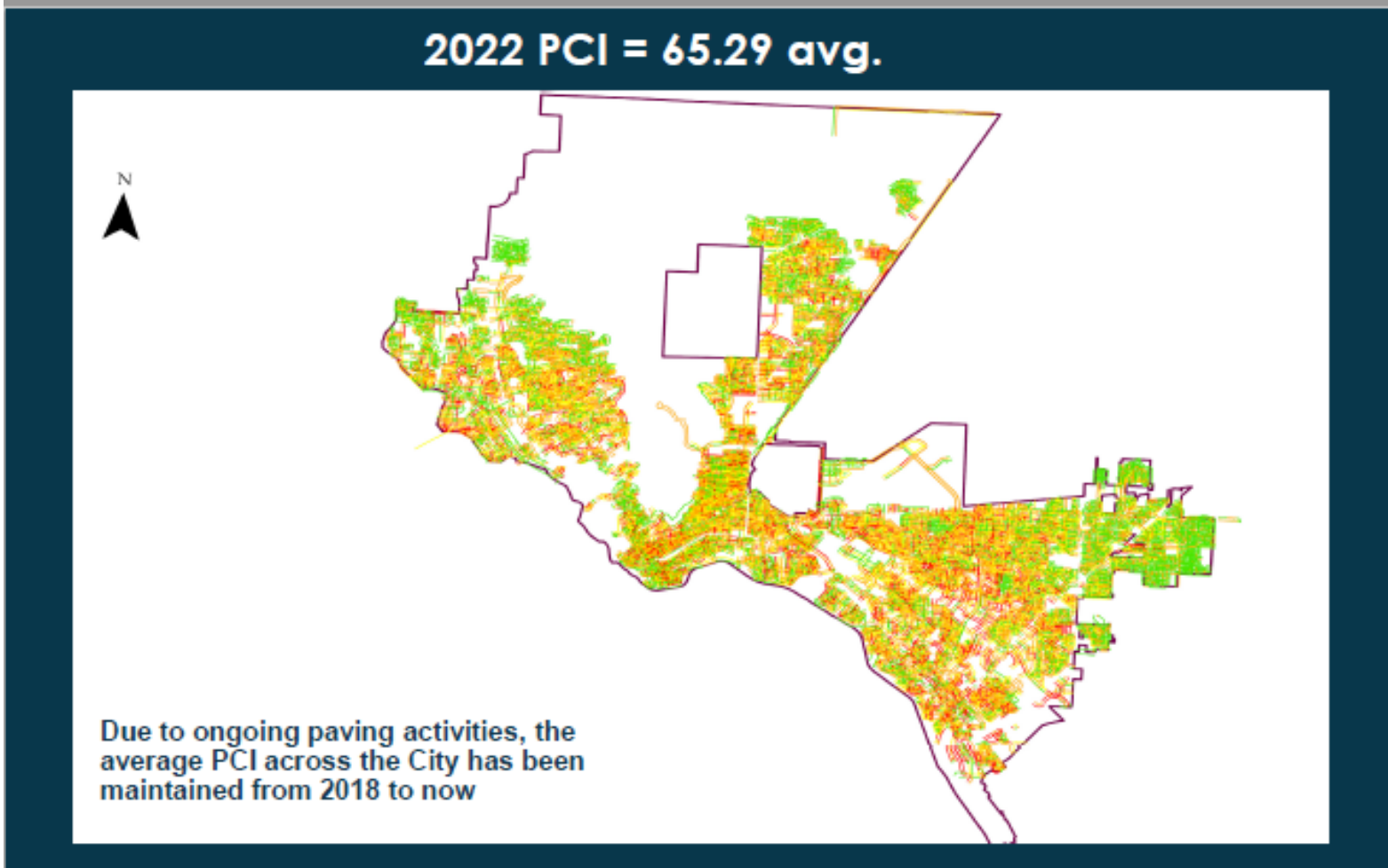
**EP
TX**

CITY OF EL PASO

PCI range	Class
85-100	Good
70-85	Satisfactory
55-70	Fair
40-55	Poor
25-40	Very Poor
10-25	Serious
0-10	Failed



2022 PCI PAVEMENT CONDITION INDEX



PCI range	Class
85-100	Good
70-85	Satisfactory
55-70	Fair
40-55	Poor
25-40	Very Poor
10-25	Serious
0-10	Failed



El Paso PCI's



CITY OF EL PASO

PCI Range	Condition Description	2022 Data % of Network	2018 Data % of Network	2008 Data % of Network
91-100	Excellent	11.57 %	27.66 %	26.75 %
81-90	Very Good	17.52 %	14.16 %	22.72 %
71-80	Good	16.16 %	15.48 %	17.06 %
61-70	Fair	12.21 %	10.31 %	17.59 %
43-60	Marginal	25.08 %	19.56 %	10.46 %
21-42	Poor	17.41 %	10.06 %	5.00 %
0-20	Very Poor	0.05 %	2.77 %	0.42 %
COEP PCI Average		65.29	65.42	75.54
Percentage Good or Higher		45.25 %	57.30 %	66.5 %
Percentage Fair or Lower		54.75 %	42.70 %	33.5 %

Presently more than 50% of streets in fair to very poor condition



PCI Study 2022 –

Website available for public use to view your Streets PCI



View PCI Map

The screenshot shows the '2022 Pavement Condition Index' website interface. At the top, it says 'EP TX 2022 Pavement Condition Index' and 'Streets and Maintenance'. A search bar contains 'n. campbell, el paso, tx'. The map displays various streets color-coded by their PCI score. A legend on the right titled 'PCI_MainMap10_8_1' lists the following categories:

- EXCELLENT (91 - 100)
- VERY GOOD (81 - 90)
- GOOD (71 - 80)
- FAIR (61 - 70)
- MARGINAL (43 - 60)
- POOR (21 - 42)
- VERY POOR (0 - 20)

A data popup window titled 'Resurfacing PCI 2022' is open over a segment of N Campbell St, showing the following details:

SEGMENT NAME	N CAMPBELL ST
DISTRICT	8
STREET CLASS	MINOR
PCI	36

Yellow arrows point to the '36' PCI value in the popup and a corresponding yellow segment on the map.

Street Pavement Continues to be a high priority for our Community

PCI Study Completed – Website available for public use

Public Information Campaign Underway for the November 2022 Community Progress Bond

Next Funding Available (recommendation for streets will be presented first quarter in 2023 based on criteria from slide 23)

- FY 24/25- \$14 M Residential (\$7M Pay Go per year)
- FY 24/25 - \$6 M Collector (\$3M Pay Go per year)

If Bond Passes on November 8, 2022:

- FY 24 /25 \$7 M residential (\$3.5 M per year) increased total of \$10.5M
- Rollout of the top 50 Arterial pavement upgrades



Ongoing Outreach

Join Us!



THURSDAY, SEPTEMBER 1, 2022

6 PM

Northeast Regional Command Center
9600 Dyer

WEDNESDAY, SEPTEMBER 7, 2022

6 PM

Municipal Services Center
7968 San Paulo

WEDNESDAY, SEPTEMBER 14, 2022

6 PM

Marty Robbins Rec Center
11620 Vista Del Sol

TUESDAY, SEPTEMBER 20

6 PM

Virtual Meeting

WEDNESDAY, SEPTEMBER 21, 2022

5:30 PM

Clardy Fox Library
5515 Robert Alva

WEDNESDAY, SEPTEMBER 21, 2022

6 PM

Region 19
11670 Chito Samaniego

THURSDAY, SEPTEMBER 22, 2022

6 PM

The Beast Community Center
13501 Jason Crandall

WEDNESDAY, SEPTEMBER 28, 2022

6 PM

Memorial Senior Center
1800 Byron

THURSDAY, SEPTEMBER 29, 2022

6 PM

Galatzan Rec Center
650 Wallenberg

FRIDAY, SEPTEMBER 30

7:30 AM

Denny's
4690 Woodrow Beam Transmountain

THURSDAY, OCTOBER 6, 2022

6 PM

Westside Regional Command Center
4801 Osbourne

WEDNESDAY, OCTOBER 12 8:00 am

Village Inn
7144 Gateway Blvd East



Ongoing Outreach

Join Us!



Additional meetings for community stakeholders:

- Moms On Board
- Chamber of Commerce
- Hispanic Chamber of Commerce
- Green Hope Project
- Frontera Land Alliance





Mission

Deliver exceptional services to support a high quality of life and place for our community



Vision

Develop a vibrant regional economy, safe and beautiful neighborhoods and exceptional recreational, cultural and educational opportunities powered by a high performing government



Values

Integrity, Respect, Excellence, Accountability, People



Misión

Brindar servicios excepcionales para respaldar una vida y un lugar de alta calidad para nuestra comunidad



Visión

Desarrollar una economía regional vibrante, vecindarios seguros y hermosos y oportunidades recreativas, culturales y educativas excepcionales impulsadas por un gobierno de alto desempeño



Valores

Integridad, Respeto, Excelencia, Responsabilidad, Personas