



ITEM 16

# Canutillo Industrial Park Replat A Easement Vacation

SUET24-00006



**Strategic Goal 3.**

Promote the Visual  
Image of El Paso



# Canutillo Industrial Park Replat A Easement Vacation



Aerial

This map is designed for illustrative purposes only. The features depicted here are approximate and more site-specific studies may be required to draw accurate conclusions. Enlargements of this map to scales greater than its original can induce errors and may lead to misinterpretations of the data. The Planning & Inspections Department Planning Division makes no claim to its accuracy or completeness.



 Subject Property

0 45 90 180 270 360 Feet





# Canutillo Industrial Park Replat A Easement Vacation



Drainage Easement  
Vacation within  
Existing  
Development

This map is designed for illustrative purposes only. The features depicted here are approximate and more site-specific studies may be required to draw accurate conclusions. Enlargements of this map to scales greater than its original can induce errors and may lead to misinterpretations of the data. The Planning & Inspections Department Planning Division makes no claim to its accuracy or completeness.



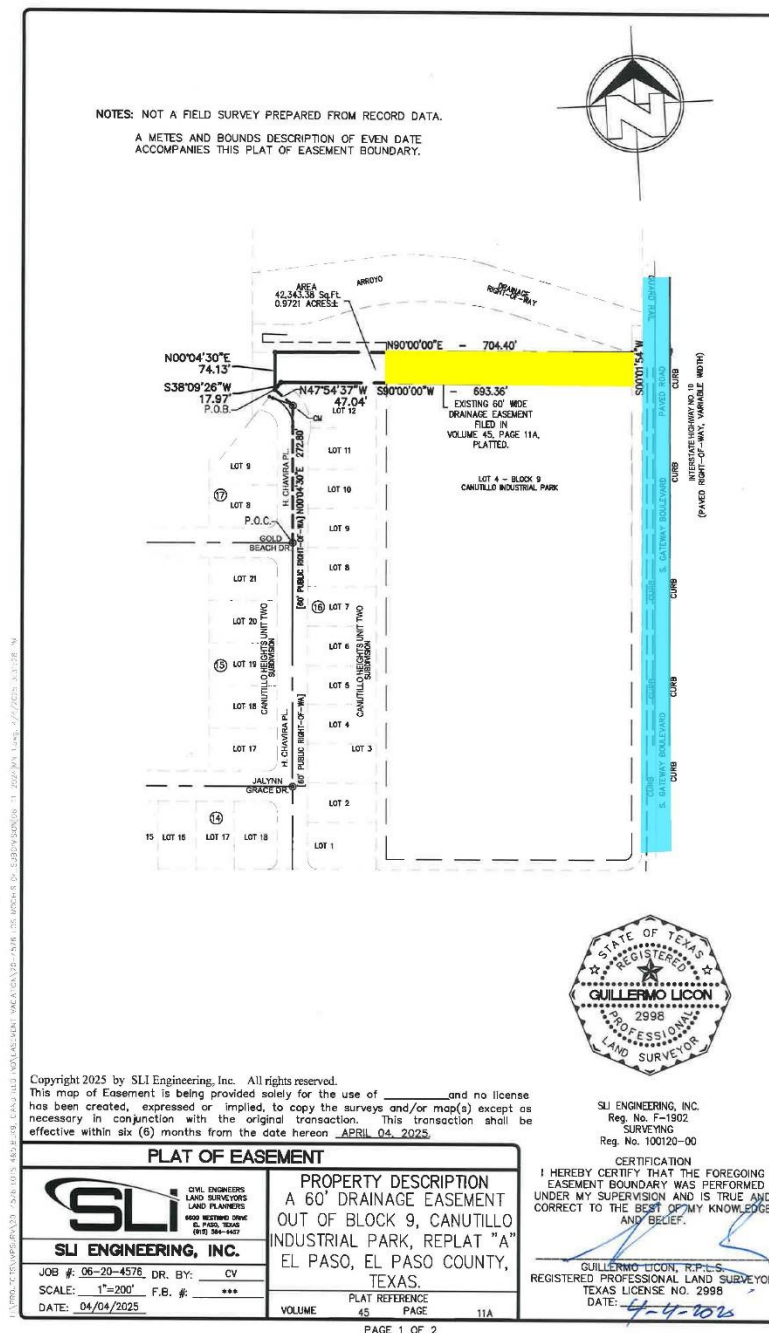
 Subject Property

0 45 90 180 270 360  
Feet





# Survey





The City Plan Commission recommended 7-0 to approve the proposed vacation request on May 22, 2025



## Mission

Deliver exceptional services to support a high quality of life and place for our community



## Vision

Develop a vibrant regional economy, safe and beautiful neighborhoods and exceptional recreational, cultural and educational opportunities powered by a high performing government



## Values

Integrity, Respect, Excellence,  
Accountability, People